

Infinity Corrected Optical System

MT5000D SERIES

BRIGHTFIELD DERMATOLOGY BIOLOGICAL COMPOUND MICROSCOPES



BRIGHTFIELD DERMATOLOGY

MT5000D SERIES

BRIGHTFIELD DERMATOLOGY BIOLOGICAL COMPOUND MICROSCOPES

Meiji Techno's Dermatology Series is part of our Preconfigured Compound Biological Microscope Series, specifically designed for use in dermatology practices. The MT5000D Series is an ideal solution for clinical environments, particularly for dermatology clinics with in-house laboratory capabilities. This microscope is well-suited for both new and experienced dermatologists looking for a reliable, practical instrument. It features a wide field of view, a smooth-operating mechanical stage, and a complete set of Infinity Corrected Planachromat Objectives, including U. Planachromat 4X, 10X, 20X, 40X, and S100X (oil immersion).

The MT5000D also includes an Abbe condenser with a numerical aperture of 1.25, along with coarse and fine focus controls featuring a stage lock and tension adjustment. Its transmitted illumination system is available in either LED or Halogen and includes auto-voltage sensing for ease of use.

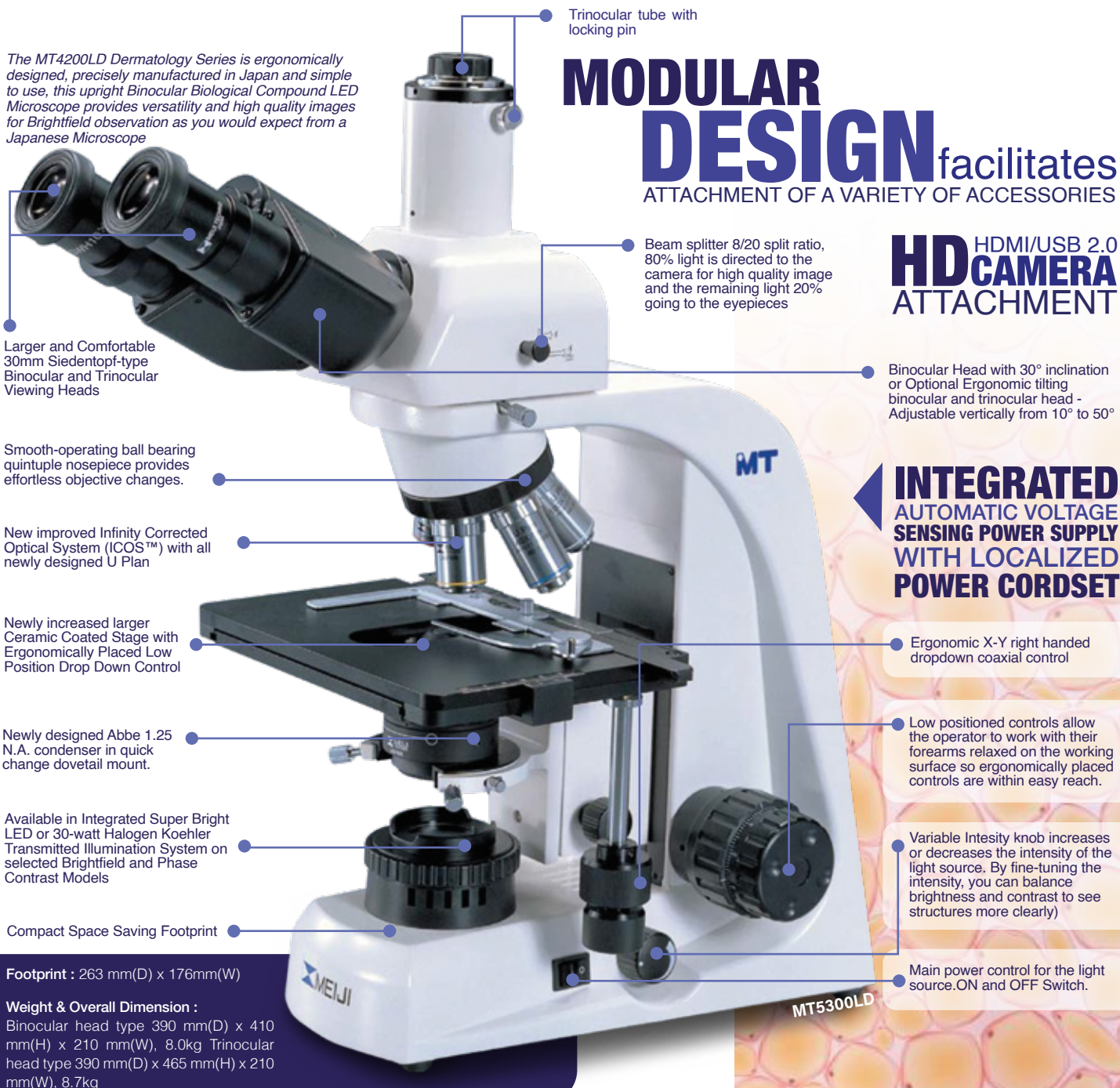


The MT4200LD Dermatology Series is ergonomically designed, precisely manufactured in Japan and simple to use, this upright Binocular Biological Compound LED Microscope provides versatility and high quality images for Brightfield observation as you would expect from a Japanese Microscope

MODULAR DESIGN facilitates ATTACHMENT OF A VARIETY OF ACCESSORIES

HD HDMI/USB 2.0 CAMERA ATTACHMENT

INTEGRATED AUTOMATIC VOLTAGE SENSING POWER SUPPLY WITH LOCALIZED POWER CORDSET



Footprint : 263 mm(D) x 176mm(W)

Weight & Overall Dimension :
Binocular head type 390 mm(D) x 410 mm(H) x 210 mm(W), 8.0kg
Trinocular head type 390 mm(D) x 465 mm(H) x 210 mm(W), 8.7kg

BRIGHTFIELD BINOCULAR DERMATOLOGY MODELS - QUINTUPLE NOSEPIECE

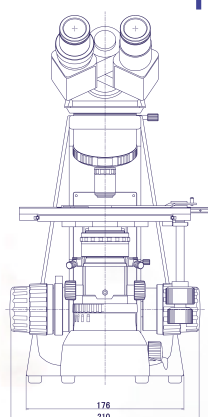
MODEL	BODY	ILLUMINATOR	EYEPIECES	OBJECTIVES	STAGE	CONDENSER
MT5200LD	BINOCULAR (siedentopf)	LED, 5500k TRANSMITTED ILLUMINATION	KHW 10X F.N. 20 (O.D. 23.2mm) PAIRED	(Bright Field) PLAN APO 1.25X U PLAN 4X U PLAN 10X U PLAN 20X U PLAN 40X	FIXED CERAMIC COATED FLAT-TOP RIGHT HANDED CONTROLS	ABBE N.A. 0.90 WITH SWING OUT TOP LENS
MT5200ELD	BINOCULAR ERGONOMIC (siedentopf)					

BRIGHTFIELD TRINOCULAR DERMATOLOGY MODELS - QUINTUPLE NOSEPIECE

MODEL	BODY	ILLUMINATOR	EYEPIECES	OBJECTIVES	STAGE	CONDENSER
MT5300LD	TRINOCULAR (siedentopf)	LED, 5500k TRANSMITTED ILLUMINATION	KHW 10X F.N. 20 (O.D. 23.2mm) PAIRED	(Bright Field) PLAN APO 1.25X U PLAN 4X U PLAN 10X U PLAN 20X U PLAN 40X	FIXED CERAMIC COATED FLAT-TOP RIGHT HANDED CONTROLS	ABBE N.A. 0.90 WITH SWING OUT TOP LENS
MT5300ELD	TRINOCULAR ERGONOMIC (siedentopf)					



DESIGNED EXCLUSIVELY
FOR DERMATOLOGY
PRACTICES



*Provides versatility and
high quality images
for Brightfield observation*

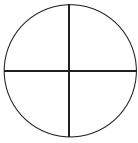


ERGONOMICALLY DESIGNED
**MANUFACTURED
IN JAPAN**

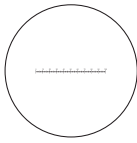
COMPONENTS & ACCESSORIES FOR MT5000 SERIES

EYEPIECE MICROMETERS (FOR USE WITH MA407 EYEPIECE)

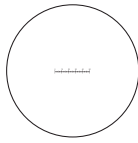
- MA284** Cross-line reticle, 21mm diameter
MA255 Eyepiece micrometer, 10mm divided into 100 units, 21mm diameter
MA256 Eyepiece micrometer 5mm divided into 100 units, 21mm diameter
MA283/05 10mm square divided into 100 parts, 1.0mm square, 21mm diameter
MA540 Cross-line with 0.1mm graduations, 21mm diameter
MA254/05 Walton and Beckett reticle 21mm diameter



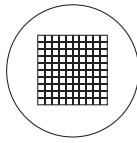
MA284
Cross-line



MA255
10mm in 100 parts



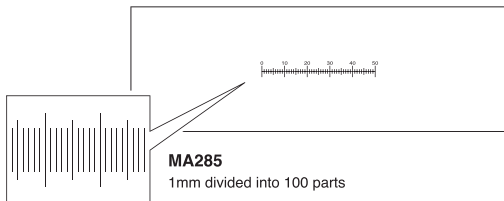
MA256
5mm in 100 parts



MA283/05
10mm square in 100 square

STAGE MICROMETERS

- MA285** Glass micrometer, 0.01mm ruling
MA286 Glass micrometer, 0.04" divided into 40 units, 0.001"



MA285
1mm divided into 100 parts

HDMI-USB 2.0 CAMERAS WITH 11.8" MONITOR

Requires 0.5 CAdapter Model MA151/35/03

- HD1000-LITE-M** Affordable Color HD 5MP CMOS 15FPS/ HDMI/ USB 2.0 Camera /Annotation & Measurement Software with 11.8IN HDMI monitor.
HD1500T-M Color HD 6MP CMOS 60FPS/ HDMI/ USB 2.0 Camera/Annotation & Metric Measurement Software with 11.8IN HDMI monitor.
HD1500MET-M Color HD 6MP CMOS 60FPS/ HDMI/ USB 2.0 Camera/Annotation & Metric Measurement Software with 11.8IN HDMI monitor.
HD1500MET-AF-M Autofocus HD 6MP CMOS 60FPS/ HDMI/ USB 2.0 Camera/Annotation & Metric Measurement Software with 11.8IN HDMI monitor.

35mm PHOTOMICROSCOPY

Following three accessories are required for mounting a 35mm SLR camera body

1. The appropriate T-2 adapter ring for your SLR camera body

- | | |
|----------------------|---|
| T2-1 Canon | T2-6 Olympus |
| T2-2 Minolta | T2-7 Contax, Yashika |
| T2-3 Pentax K | T2-8 Konica |
| T2-4 Pentax S | T2-9 Canon Eos |
| T2-5 Nikon | T2-10 Minolta Alpha / Maxim 2000 |

These adapter rings attach directly to your camera body's lens mount.

2. A photo eyepiece, available in the following magnifications:

- MA512** 2.5X magnification
MA500 3.3X magnification (with reticle mount)
MA508 5X magnification

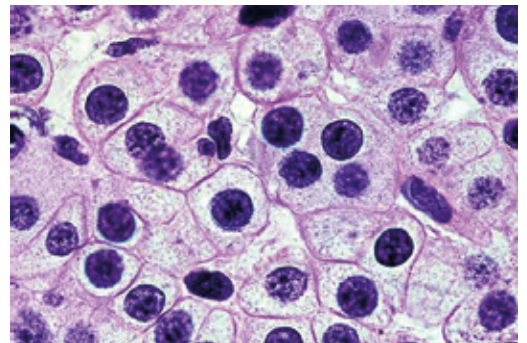
The photo eyepiece performs the same function as a standard 35mm camera lens (i.e. focusing the image at the plane of the film).

3. One of two MA150 series camera attachments:

- MA150/50** Straight-tube camera attachment
MA150/60 Camera attachment with built-in focusing eyepiece
 These attachments are used to mount the camera with T2 adapter ring to the photo tube.



MT5300ELD-HD



PINK TISSUE CELL UNDER A MICROSCOPE USING MT5300LD



Photo Eyepiece



T2 Adapter Ring



MA150/50

COMPONENTS AND ACCESSORIES FOR MT5000 SERIES

VIEWING HEAD (without eyepieces)

- MA815** Binocular head (Siedentopf type), I.P. adjustment 53mm to 75mm graduated diopter on left eyetube (30.0mm I.D. eyetubes). Inclined at 30°. (Included in Models MT5200L, MT5200H, and MT5210H)
- MA816** Trinocular head (Siedentopf type), I.P. adjustment 53mm to 75mm graduated diopter on left eyetube (30.0mm I.D. eyetubes). Inclined at 30°. (Included in Models MT5300L, MT5300H, and MT5310H)
- MA957** Ergonomic tilting binocular head (Siedentopf type), adjustable from 10° to 50°, I.P. adjustment 53mm to 75mm, graduated diopter on left eyetube (30.0mm I.D. eyetubes)

PHOTO/VIDEO ATTACHMENT

- MA598** Photo/Video attachment with sliding 80/20 beam splitter
For use with video or digital cameras when MA957 ergonomic head is used (included in MT5300ED)

EYEPIECES WITH 30.0MM O.D. TUBE

- MA817** SWH10X, Widefield high eyepoint eyepiece, Field No. 22, Tube O.D. 30.0mm (paired), Included in Models MT5200L, MT5300L, MT5200H, MT5300H, MT5210H and MT5310H)
- MA818** SWH15X, Widefield high eyepoint eyepiece, Field No. 16.0, Tube O.D. 30.0mm (paired)
- MA819** SWH20X, Widefield high eyepoint eyepiece, Field No. 12.0, Tube O.D. 30.0mm (paired)
- MA859** SWH10X-F Focusing eyepiece with reticle mount (w/o reticle) Tube O.D. 30.0mm (paired)

OBJECTIVES INCLUDED IN MT5200D & MT5300D DERMATOLOGY MICROSCOPES

- MA1022** Plan Apochromat Objective 1.25X, N.A. 0.04, W.D. 3.7mm, F.N. 24
- MA831** U Plan Objective 4X, N.A. 0.10, W.D. 25.8mm, F.N. 24, (Included in Models MT5200L, MT5300L, MT5200H and MT5300H)
- MA832** U Plan Objective 10X, N.A. 0.25, W.D. 10.67mm, F.N. 24, (Included in Models MT5200L, MT5300L, MT5200H and MT5300H)
- MA833** U Plan Objective 20X, N.A. 0.40, W.D. 7.29mm, F.N. 24
- MA834** U Plan Objective 40X, N.A. 0.65, W.D. 0.5mm, F.N. 24, (Included in Models MT5200L, MT5300L, MT5200H and MT5300H)

OPTIONAL OBJECTIVES FOR MT5200D & MT5300D DERMATOLOGY MICROSCOPES

- MA830** U Plan Objective 2.5X, N.A. 0.07, W.D. 5.7mm, F.N. 24
- MA837** U Plan Objective 100X oil, N.A. 1.25, W.D. 0.23mm, F.N. 24, (Included in Models MT5200L, MT5300L, MT5200H and MT5300H)

BRIGHTFIELD CONDENSER

- MA910** Abbe condenser, N.A. 1.25 with iris diaphragm and filter tray, dovetail mount (Included in all Models)
- MA976** Plan Apochromat Objective 1.25X, N.A. 0.04, W.D. 3.7mm, F.N. 24

FILTERS

- MA856/05** LB100 Blue Clear filter 40mm diameter, unmounted (Included in all Halogen illuminator models) (Included with MT5200H, MT5300H, MT5210H & MT5310H)
- MA857/05** Green filter, clear, 40.0mm diameter, unmounted
- MA858/05** ND25 Neutral density filter, 40.0mm diameter, unmounted

REPLACEMENT STAGES AND COMPONENTS

- MA598** Attachable finger assembly for MA918R and MA918L
- MA676** Attachable clinical specimen holder for MA918R and MA918L
- MA918R** Ceramic coated flat-top stage, 78mm x 52mm, X-Y movement, with right hand drop-down coaxial controls. (Included in Models MT5200L, MT5300L, MT5200H, MT5300H, MT5310H, and MT5310H)
- MA918L** Ceramic coated flat-top stage, 78mm x 52mm, X-Y movement, with left hand drop-down coaxial controls. (Included in Models MT5200L, MT5300L, MT5200H, MT5300H, MT5310H, and MT5310H)

EYEPIECE MICROMETERS (25MM DIAMETER) FOR USE WITH MA817 SWH10X EYEPIECE)

- MA506** 10mm divided into 100 units, 25mm diameter
- MA509** 5mm divided into 100 units, 25mm diameter
- MA524** 10mm square into 400 parts, 0.5mm square, 25mm diameter
- MA510** 10mm square into 100 parts, 1.0mm square, 25mm diameter
- MA542** Cross line with 0.1mm graduation 25mm diameter

REPLACEMENT FUSE AND BULB

- LED/SP-1** 3W LED, 5500K color temperature (transmitted bulb)
- MA929** Spare Fuse 0.5A for LED Illuminator

POWER CORDS

- MA809/10** Removable AC Electric cord with plug for 115V models (Included in all 115V models)
- MA809/20** Removable AC Electric cord with plug for 220V models (Included in all 220V models)

MISCELLANEOUS

- MA701** Dust Cover for MT5000D Series
- MA701AS** Anti-static and wavy dust cover for MT4000, MT5000, MT7000 MT6100, MT6500, MT-50, MT-60, 22"x 21" size, blue color
- MA906** Eyeshields for MA817 SWH 10X eyepieces (each)



ERGONOMIC HEAD



PLANACHROMAT OBJECTIVES



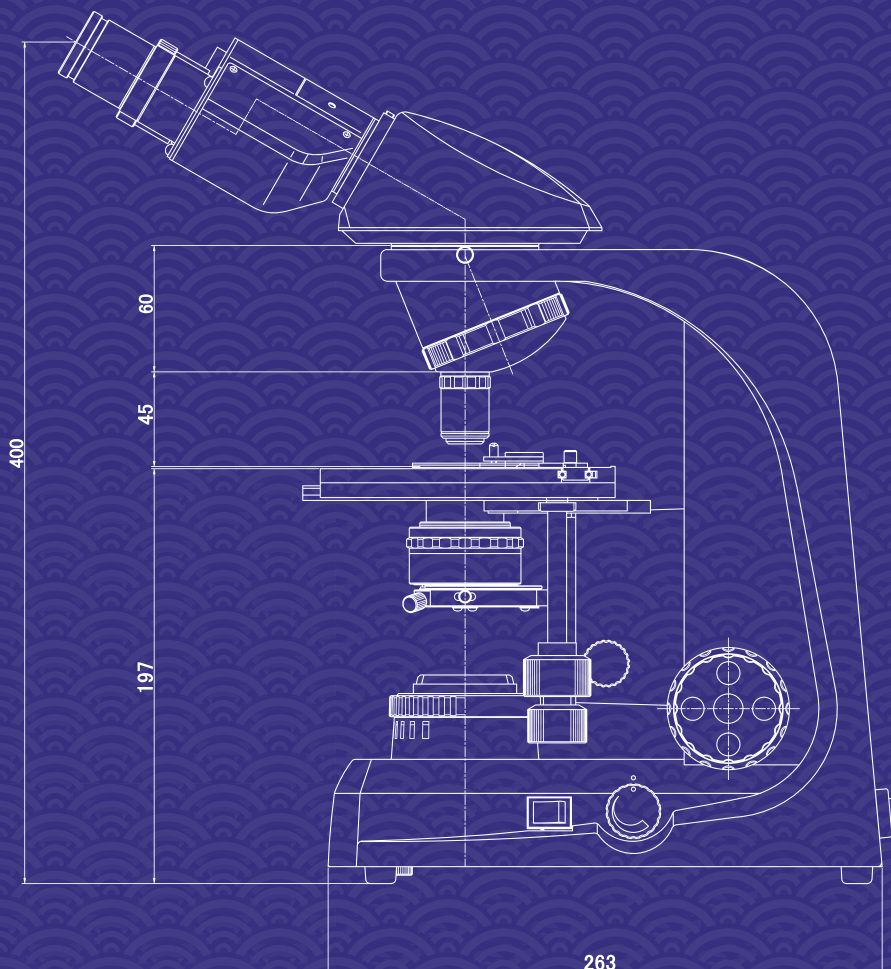
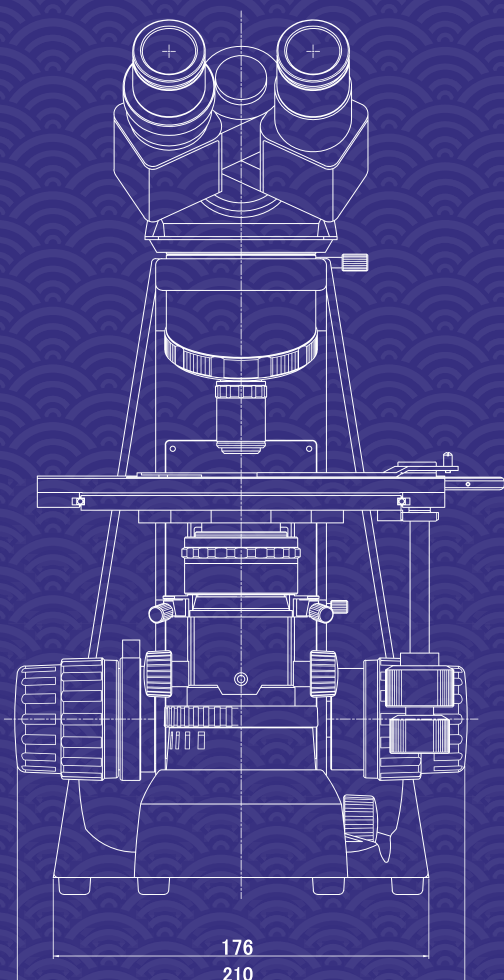
POLARIZER SET



ARKFIELD CONDENSER AND OBJECTIVES WITH IRIS DIAPHRAGM



For further information
about the MT5000D
Series, scan this QR code.



Specifications and design subject to change without notice for improvements

Agent:

MEIJI TECHNO CO.,LTD.

322-1, Chikumazawa Miyoshi-machi,
Iruma-gun Saitama 354-0043, Japan
Tel : (0)49-259-0111 Fax : (0)49-259-0113
E-mail : meiji@meijitechno.co.jp
<http://www.meijitechno.co.jp>

MEIJI TECHNO AMERICA

591 Division St., Campbell CA 95008
Tel: 408-226-3454 Fax: 408-226-0900
Toll free : 800-832-0060

Make your order at:
E-mail: admin@meijitechno.com

General Questions:
info@meijitechno.com
sales@meijitechno.com

<http://www.meijitechno.com>



ISO9001
JQA QMA10273



091-A



Accredited by RvA