

Infinity Corrected Optical System

MT4000D **SERIES**

BRIGHTFIELD DERMATOLOGY BIOLOGICAL COMPOUND MICROSCOPES



MT4000D SERIES

BRIGHTFIELD DERMATOLOGY

MT4000D SERIES

BRIGHTFIELD DERMATOLOGY BIOLOGICAL COMPOUND MICROSCOPES

Meiji Techno's Dermatology Series is part of our Preconfigured Compound Biological Microscope Series, specifically designed for use in dermatology practices. The MT4000D Series is an ideal solution for clinical environments, particularly for dermatology clinics with in-house laboratory capabilities. This microscope is well-suited for both new and experienced dermatologists looking for a reliable, practical instrument. It features a wide field of view, a smooth-operating mechanical stage, and a complete set of Infinity Corrected Planachromat Objectives, including U. Planachromat 4X, 10X, 20X, 40X, and S100X (oil immersion).

The MT4000D also includes an Abbe condenser with a numerical aperture of 1.25, along with coarse and fine focus controls featuring a stage lock and tension adjustment. Its transmitted illumination system is available in either LED or Halogen and includes auto-voltage sensing for ease of use.

The MT4200LD Dermatology Series is ergonomically designed, precisely manufactured in Japan and simple to use, this upright Binocular Biological Compound LED Microscope provides versatility and high quality images for Brightfield observation as you would expect from a Japanese Microscope



MODULAR DESIGN

facilitates
ATTACHMENT OF A VARIETY OF ACCESSORIES



**INTEGRATED
AUTOMATIC VOLTAGE
SENSING POWER SUPPLY
WITH LOCALIZED
POWER CORDSET**
(TRANSMITTED LIGHT MODELS ONLY)

Low positioned controls allow the operator to work with their forearms relaxed on the working surface so ergonomically placed controls are within easy reach.

**WIDE RANGE
OF FILTERS
AND ACCESSORIES**

Footprint : 263 mm(D) x 176mm(W)

Weight & Overall Dimension :

Binocular head type 390 mm(D) x 410 mm(H) x 210 mm(W), 8.0kg **Trinocular head** type 390 mm(D) x 465 mm(H) x 210 mm(W), 8.7kg

MT4300LD / MT4300HD

BRIGHTFIELD BINOCULAR DERMATOLOGY MODELS - QUINTUPLE NOSEPIECE

MODEL	BODY	ILLUMINATOR	EYEPIECES	OBJECTIVES	STAGE	CONDENSER
MT4200LD	BINOCULAR (siedentopf)	LED, 5500k TRANSMITTED ILLUMINATION	KHW 10X F.N. 20 (O.D. 23.2mm) PAIRED	(Bright Field) PLAN APO 1.25X U PLAN 4X U PLAN 10X U PLAN 20X U PLAN 40X	FIXED CERAMIC COATED FLAT-TOP RIGHT HANDED CONTROLS	ABBE N.A. 0.90 WITH SWING OUT TOP LENS
MT4200ELD	BINOCULAR ERGONOMIC (siedentopf)					

BRIGHTFIELD TRINOCULAR DERMATOLOGY MODELS - QUINTUPLE NOSEPIECE

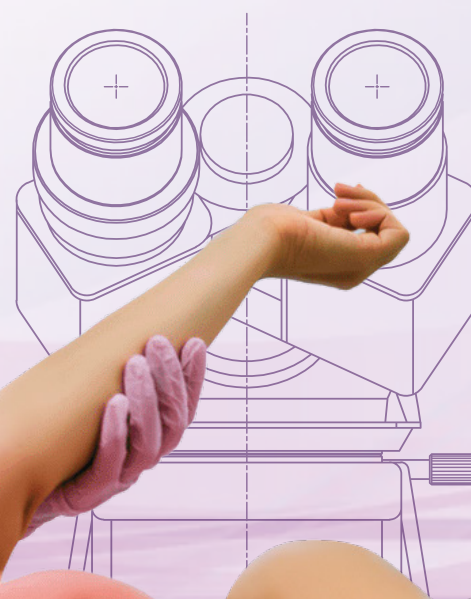
MODEL	BODY	ILLUMINATOR	EYEPIECES	OBJECTIVES	STAGE	CONDENSER
MT4300LD	TRINOCULAR (siedentopf)	LED, 5500k TRANSMITTED ILLUMINATION	KHW 10X F.N. 20 (O.D. 23.2mm) PAIRED	(Bright Field) PLAN APO 1.25X U PLAN 4X U PLAN 10X U PLAN 20X U PLAN 40X	FIXED CERAMIC COATED FLAT-TOP RIGHT HANDED CONTROLS	ABBE N.A. 0.90 WITH SWING OUT TOP LENS
MT4300ELD	TRINOCULAR ERGONOMIC (siedentopf)					

*Provides versatility and
high quality images
for Brightfield observation*



ERGONOMICALLY DESIGNED
**MANUFACTURED
IN
JAPAN**

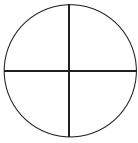
DESIGNED EXCLUSIVELY
FOR **DERMATOLOGY**
PRACTICES



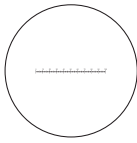
COMPONENTS & ACCESSORIES FOR MT4000 SERIES

EYEPIECE MICROMETERS (FOR USE WITH MA407 EYEPIECE)

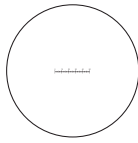
- MA284** Cross-line reticle, 21mm diameter
MA255 Eyepiece micrometer, 10mm divided into 100 units, 21mm diameter
MA256 Eyepiece micrometer 5mm divided into 100 units, 21mm diameter
MA283/05 10mm square divided into 100 parts, 1.0mm square, 21mm diameter
MA540 Cross-line with 0.1mm graduations, 21mm diameter
MA254/05 Walton and Beckett reticle 21mm diameter



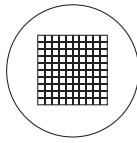
MA284
Cross-line



MA255
10mm in 100 parts



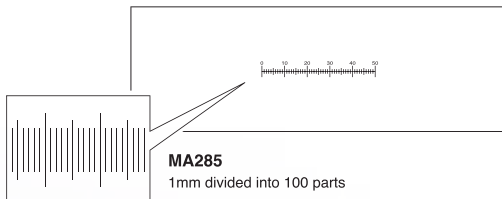
MA256
5mm in 100 parts



MA283/05
10mm square in 100 square

STAGE MICROMETERS

- MA285** Glass micrometer, 0.01mm ruling
MA286 Glass micrometer, 0.04" divided into 40 units, 0.001"



MA285
1mm divided into 100 parts

HDMI-USB 2.0 CAMERAS WITH 11.8" MONITOR

- HD1000-LITE-M** Affordable Color HD 5MP CMOS 15FPS/ HDMI/ USB 2.0 Camera /Annotation & Measurement Software with 11.8IN HDMI monitor.
HD1500T-M Color HD 6MP CMOS 60FPS/ HDMI/ USB 2.0 Camera/Annotation & Metric Measurement Software with 11.8IN HDMI monitor.
HD1500MET-M Color HD 6MP CMOS 60FPS/ HDMI/ USB 2.0 Camera/Annotation & Metric Measurement Software with 11.8IN HDMI monitor.
HD1500MET-AF-M Autofocus HD 6MP CMOS 60FPS/ HDMI/ USB 2.0 Camera/Annotation & Metric Measurement Software with 11.8IN HDMI monitor.

35mm PHOTOMICROSCOPY

Following three accessories are required for mounting a 35mm SLR camera body

1. The appropriate T-2 adapter ring for your SLR camera body

- | | |
|----------------------|---|
| T2-1 Canon | T2-6 Olympus |
| T2-2 Minolta | T2-7 Contax, Yashika |
| T2-3 Pentax K | T2-8 Konica |
| T2-4 Pentax S | T2-9 Canon Eos |
| T2-5 Nikon | T2-10 Minolta Alpha / Maxim 2000 |

These adapter rings attach directly to your camera body's lens mount.

2. A photo eyepiece, available in the following magnifications:

- MA512** 2.5X magnification
MA500 3.3X magnification (with reticle mount)
MA508 5X magnification

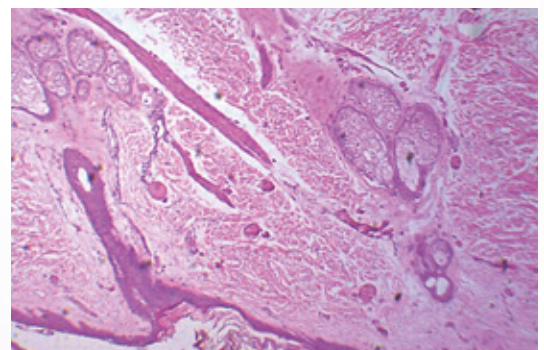
The photo eyepiece performs the same function as a standard 35mm camera lens (i.e. focusing the image at the plane of the film).

3. One of two MA150 series camera attachments:

- MA150/50** Straight-tube camera attachment
MA150/60 Camera attachment with built-in focusing eyepiece
 These attachments are used to mount the camera with T2 adapter ring to the photo tube.



MT4300ELV-HD



HUMAN SKIN, CROSS-SECTION CAPTURED BY MT4300LD



Photo Eyepiece



T2 Adapter Ring



MA150/50

COMPONENTS & ACCESSORIES FOR MT4000 SERIES

VIEWING HEAD (without eyepieces)

- MA815/05** Binocular head (Siedentopf type, I.P. adjustment 53mm to 75mm graduated diopter on left eyetube (23.2mm I.D. eyetubes). Inclined at 30°. (Included in Model MT4200L, MT4200H & MT4210H)
- MA816/05** Trinocular head (Siedentopf type, I.P. adjustment 53mm to 75mm graduated diopter on left eyetube (23.2mm I.D. eyetubes). Inclined at 30°. (Included in Model MT4300L, MT4300H & MT4310H)
- MA957/05** Ergonomic head, inclination adjustable vertically from 10° to 50°. (23.2mm I.D. eyetubes).
- MA958** Photo/Video attachment with sliding 80/20 beam-splitter for attaching video or digital camera to MT Series when MA957/05 Ergonomic head is used.

EYEPIECES

- MA407** KHW10X Compensating eyepiece, Field No. 20, Tube O.D. 23.2mm (21mm reticle mount) (Paired MA407 Eyepieces included in all MT4000 Series models)
- MA407/05** KHW10X Compensating Focusing eyepiece, Field No. 20, Tube O.D. 23.2mm (each) (optional)
- MA408** HWF15X, Widefield eyepiece, Field No. 12.2, Tube O.D. 23.2mm (No reticle mount)
- MA409** HWF20X, Widefield eyepiece, Field No. 9, Tube O.D. 23.2mm (No reticle mount)
- MA406** HWF10X Widefield High-eyepoint eyepiece, Field No. 18, Tube O.D. 23.2mm (19mm reticle mount)
- MA413** HWF-10X Focusing eyepiece with reticle mount, Field No. 18, Tube O.D. 23.2mm (19mm reticle mount)

U PLAN OBJECTIVES (Infinity Corrected F=200mm) Included in models MT4200LV, MT4300LV, MT4200HV, MT4300HV)

- MA830** U Plan Objective 2.5X, N.A. 0.07 W.D. 5.7mm, F.N. 24 (Optional)
- MA831** U Plan Objective 4X, N.A. 0.10 W.D. 25.8mm, F.N. 24 (Included)
- MA832** U Plan Objective 10X, N.A. 0.25 W.D. 10.7mm, F.N. 24 (Included)
- MA833** U Plan Objective 20X, N.A. 0.40 W.D. 7.29mm, F.N. 24 (Included)
- MA834** U Plan Objective 40X, N.A. 0.65 W.D. 0.5mm, F.N. 24 (Included)
- MA969** Plan Objective 60X, N.A. 0.80 W.D. 0.23mm, F.N. 24 (Optional)
- MA837** U Plan Objective 100X, N.A. 1.25 oil, W.D. 0.23mm, F.N. 24 (Included)

U PLAN PHASE CONTRAST OBJECTIVES (Infinity Corrected F=200mm)

- MA839** U Plan Phase 10X Objective, N.A. 0.25, W.D. 10.7mm (Optional)
- MA840** U Plan Phase 20X Objective, N.A. 0.40, W.D. 7.29mm (Optional)

CONDENSER

- MA910** Abbe condenser, N.A.1.25 with iris diaphragm in dovetail mount (Included in Models MT4200LV MT4300LV, MT4200HV & MT4300HV)
- MA911** Achromatic condenser, N.A.1.25 with iris diaphragm in dovetail mount
- MA913** Zernike Phase condenser with centerable phase annuli for 10X, 20X, 40X, 100X with brightfield position, darkfield stop for 40X objective, (black-out position for epi-fluorescence on MT6000 Series only) with iris in dovetail mount (Optional for Phase Contrast upgrade)

POLARIZER

- MA915** Polarizer set for MT4000 Series

FILTERS

- MA858/05** ND25 Neutral density filter, 44.0mm diameter, unmounted
- MA856/05** LB100 Blue Clear filter 44.0mm diameter, unmounted (Included in Models MT4200H, MT4300H, MT4210H & MT4310H)
- MA857/05** Green filter, clear, 44.0mm diameter, unmounted (Included in Models MT4210H & MT4310H)
- MA861/05** Green interference filter, 44.0mm diameter, unmounted

STAGES

- MA917R** Ceramic coated flat-top stage, 78mm x 52mm, X-Y movement, with right hand drop-down coaxial controls. (Included in all Models)
- MA917L** Ceramic coated flat-top stage, 78mm x 52mm, X-Y movement, with left hand drop-down coaxial controls. (Optional)
- MA598** Attachable finger assembly for MA917R and MA917L

MISCELLANEOUS

- MA200** Eyeshield for MA407 KHW10X Eyepiece (ea)
- MA326** Spare bulb 6V 30W Halogen lamp
- MA327** Spare 3A Fuse for Halogen illuminator
- MA929** Spare Fuse 0.5A for LED Illuminator
- MA809/10** Removable AC Electric cord with UL plug for 115V models
- MA809/20** Removable AC Electric cord with European plug for 220V models
- MA809/30** Removable AC Electric cord with UK plug for 240V models
- MA701** Dust Cover for MT4000 Series



MA957/05 ERGONOMIC HEAD



MA834 U. PLAN 40X OBJECTIVE



MA913 - ABBE CONDENSER



MA856/05 LB100 BLUE CLEAR FILTER UNMOUNTED

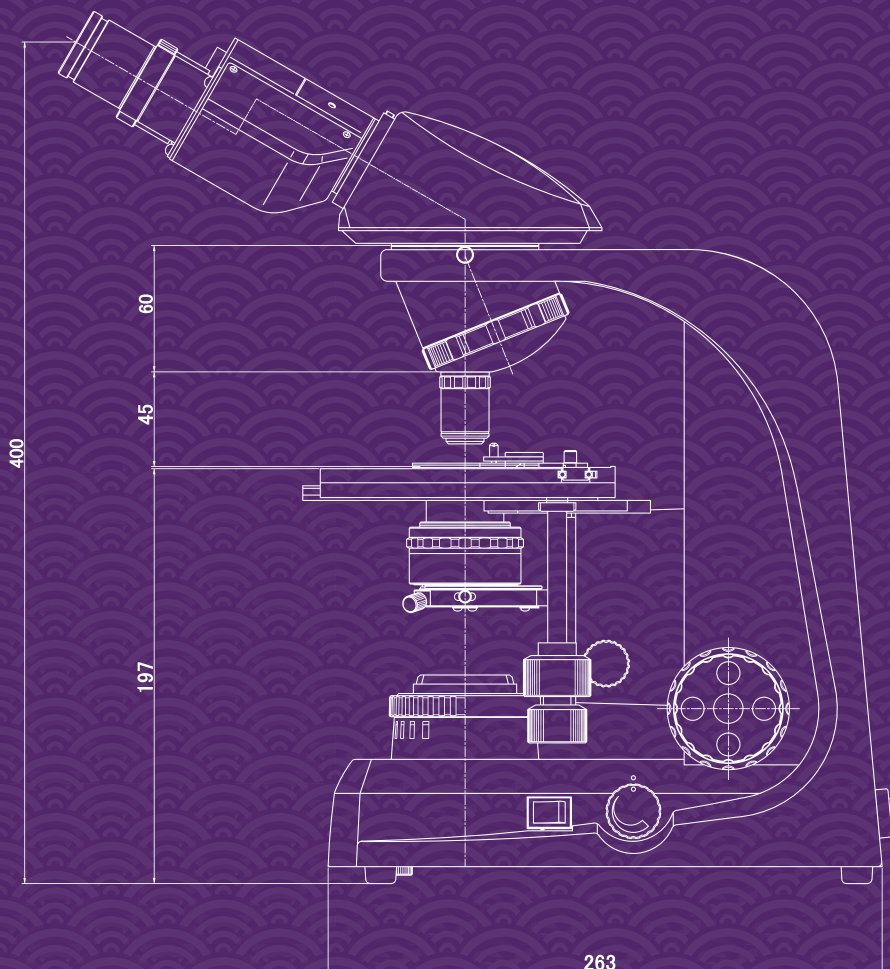
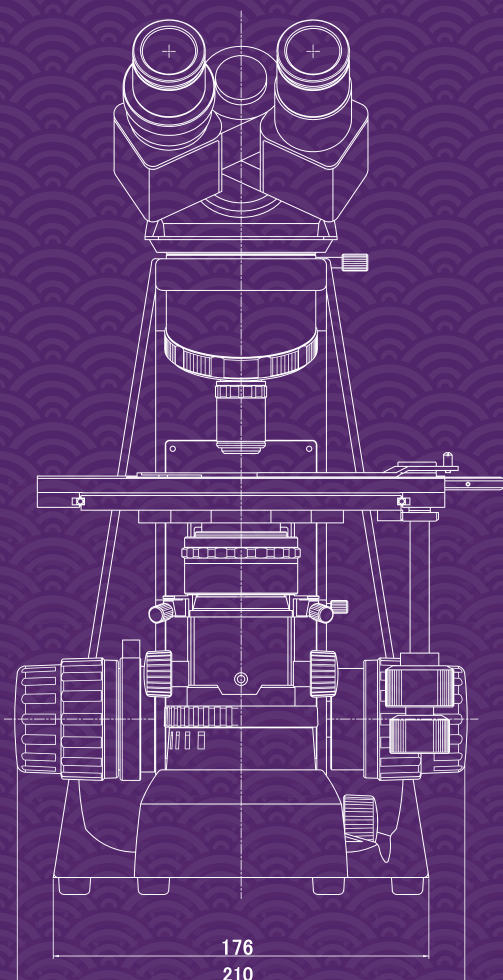


Zernike Phase Set

PHASE CONTRAST SET, comprising:
Zernike Phase condenser, S Plan Phase Objectives 10X, 20X, 40X, 100X, Centering Telescope (MA458) and Green filter (MA857/05)



For further information
about the MT4000D
Series, scan this QR code.



Specifications and design subject to change without notice for improvements

Agent:

MEIJI TECHNO CO.,LTD.

322-1, Chikumazawa Miyoshi-machi,
Iruma-gun Saitama 354-0043, Japan
Tel : (0)49-259-0111 Fax : (0)49-259-0113
E-mail : meiji@meijitechno.co.jp
<http://www.meijitechno.co.jp>

MEIJI TECHNO AMERICA

591 Division St., Campbell CA 95008
Tel: 408-226-3454 Fax: 408-226-0900
Toll free : 800-832-0060

Make your order at:
E-mail: admin@meijitechno.com

General Questions:
info@meijitechno.com
sales@meijitechno.com

<http://www.meijitechno.com>



ISO9001
JQA QMA10273



091-A



Accredited by RvA