

### Specifications

1. Reinforced Cement Concete framed structure
2. Exterior walls 9" thick and interior walls 4.5" thick
3. 24" x 24" vitrified tile flooring for all rooms
4. Designer glazed tiles for all bath rooms
5. Granite cooking platform with stainless steel sink in kitchen
6. UPVC Windows
7. Enamel painted MS grills to windows
8. Biometric entry to lift and stair case areas
9. Covered car parking space in stilt at extra cost
10. Concealed copper wiring with switches up to provision for points
11. Concealed wiring for cable TV point
12. Plastic emulsion paint with putty finished interior walls
13. Intercom for all flats connected to security
14. Generator fo lift common lighting and 500 Watts backup for each flat
15. Municipal & Borewell water supply

### Notes

1. Drawing printed herein are not to scale
2. The Specifications do include furniture & fittings that are shown in the floor plan are only for the purpose of explaining the layout
3. Superbuilt up area includes area of walls and proportionate area of staircases, corridors, common passages, architectural features, external cladding thickness, etc.,
4. The informations contained herein are subject to changes and cannot form part of an offer or contract. While every reasonable care has been taken in providing this information the owner, the builder or their agents cannot be held for any inaccuracies



# ADITI MOONSTONE



**ADITI**  
PROPERTIES

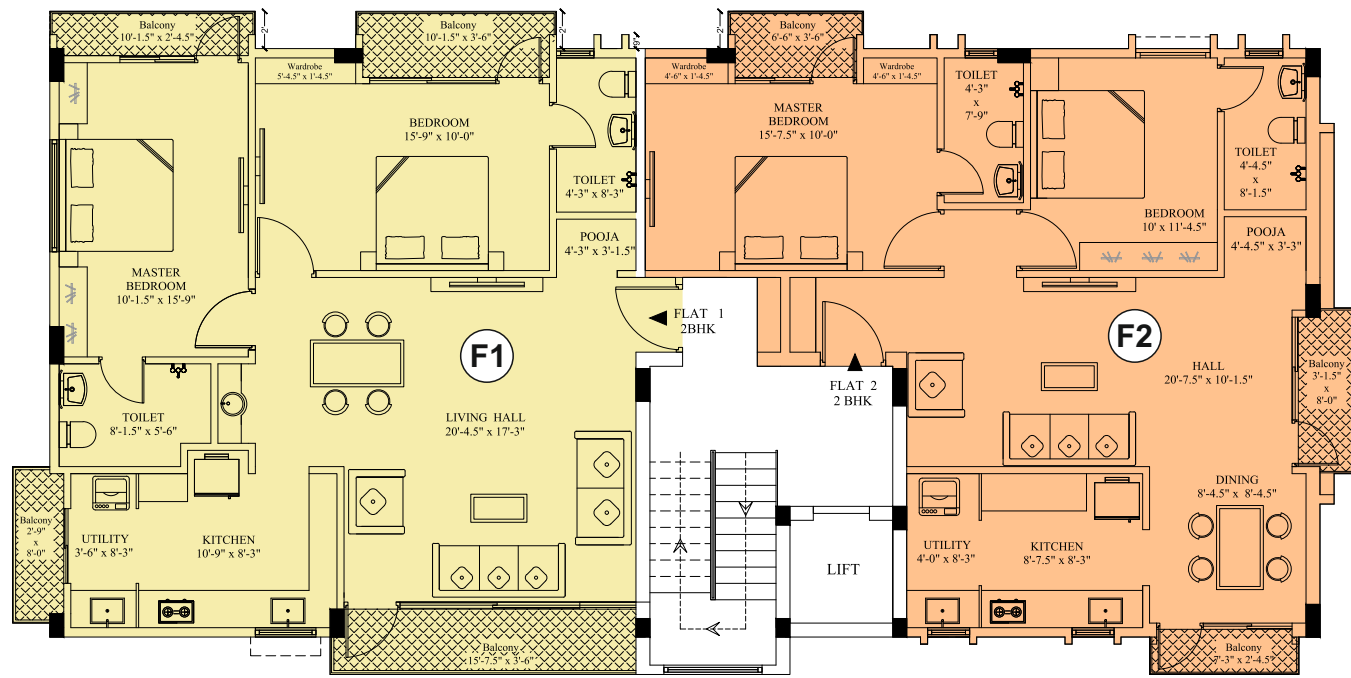
D.No 23, Ramalingam Street, Mahalingapuram, Pollachi - 642 002

Mobile : 94432 64506 / 90439 53634

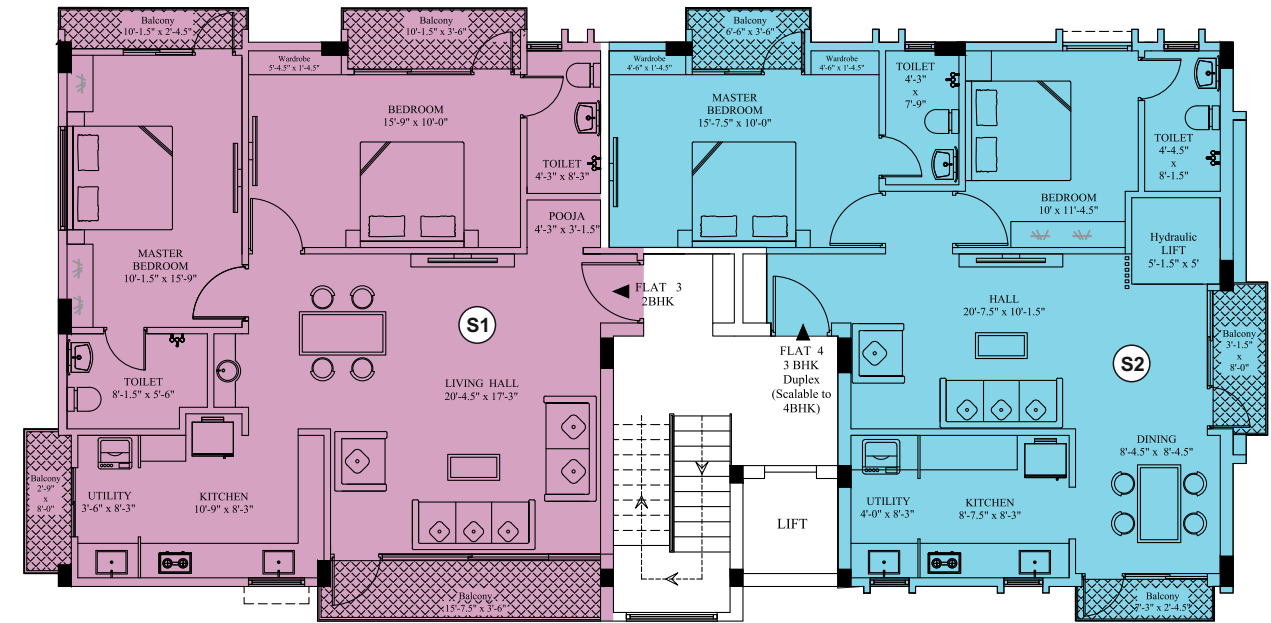
Email : [info@aditiproperties.com](mailto:info@aditiproperties.com)

Web : [www.aditiproperties.com](http://www.aditiproperties.com)

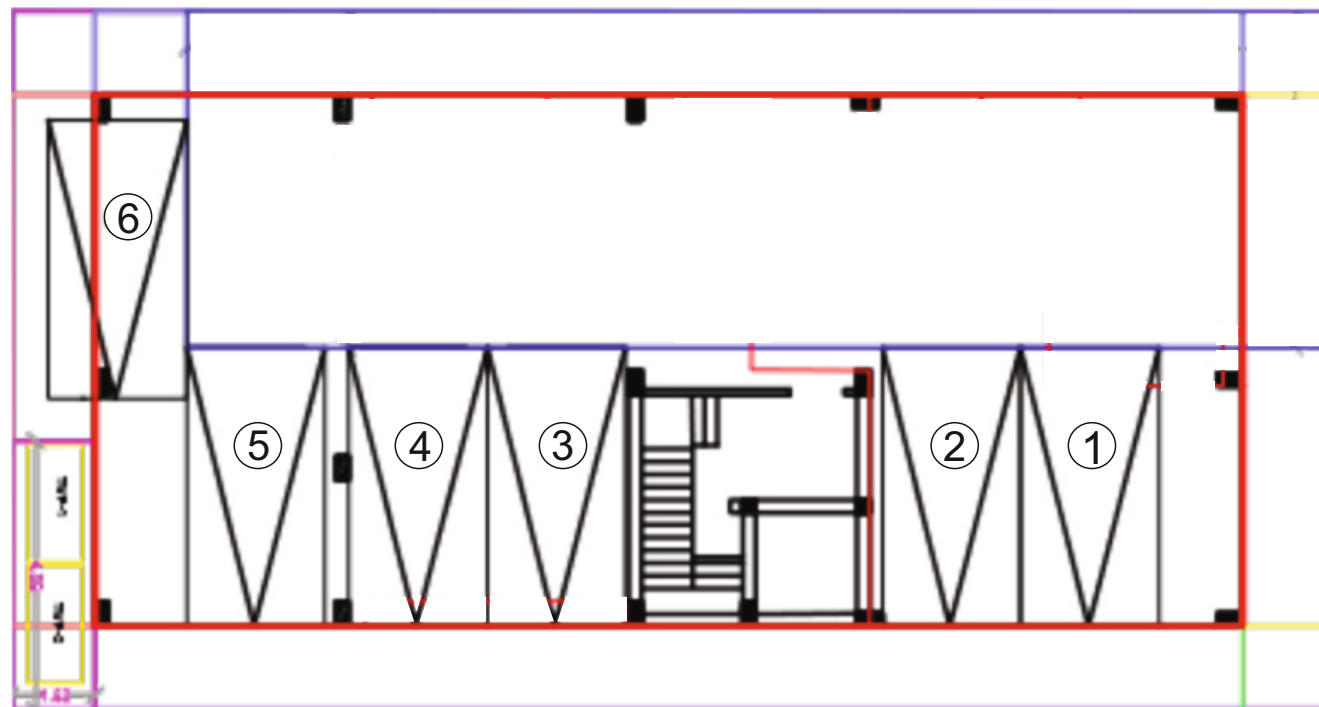
*Your Dreams! We Build*



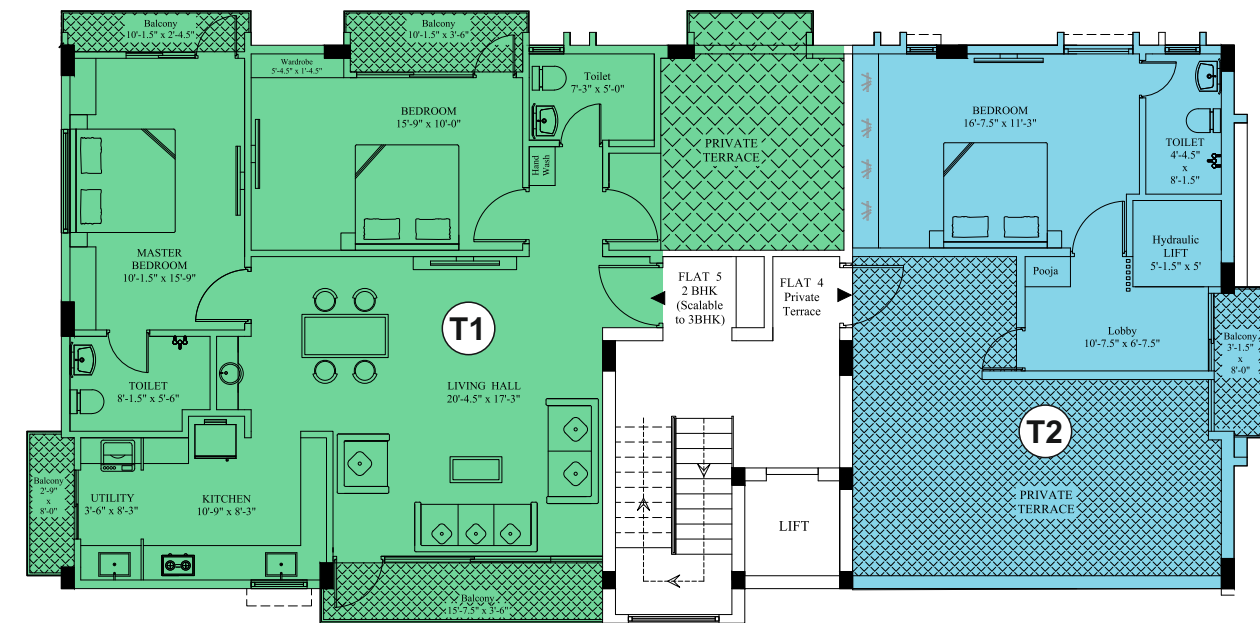
**(F1) 1310 Sqft**      **First Floor Plan**      **(F2) 1140 Sqft**      



**(S1) 1310 Sqft**      **Second Floor Plan**      **(S2) & (T2) 1790 Sqft**      



**Car Parking**



**(T1) 1450 Sqft**      **Third Floor Plan**      **(S2) & (T2) 1790 Sqft**      