



# GRS SERIES

Aluminum Base Shoe  
Glass Railing System



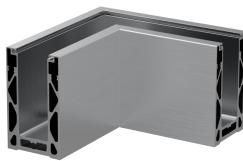
Glass Thickness  
1/2" - 27/32"  
(12 - 21.52mm)

Matt Black

Brushed Anodized



TOP MOUNT



TOP MOUNT  
CORNER



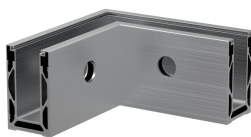
END CAP



PIN



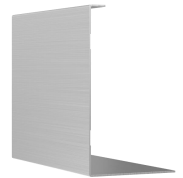
FASCIA MOUNT



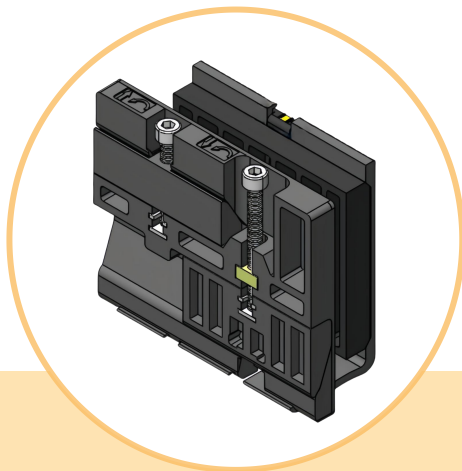
FASCIA MOUNT  
INNER CORNER



FASCIA MOUNT  
OUTER CORNER



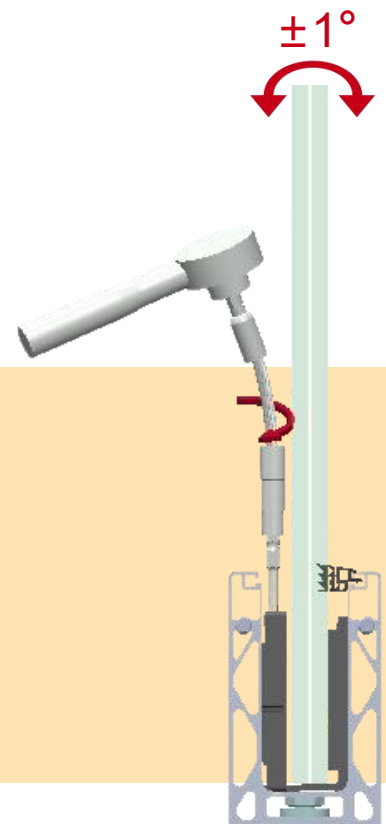
FASCIA MOUNT  
CLADDING



The glass angle can be adjusted by adjusting  
the two screws on the wedge.

No need to remove glass, safe and easy.

## Tilt for Glass Alignment



# SPECIAL DESIGN

## Tearable Rubber



| GLASS   | RUBBER SET |
|---|------------|
| 1/2" - 9/16" lam.<br>(12 - 13.52 mm)            |            |
| 19/32"<br>(15 mm)                               |            |
| 5/8" lam. - 11/16" lam.<br>(16.76 - 17.52 mm)   |            |
| 3/4"<br>(19 mm)                                 |            |
| 13/16" lam. - 27/32" lam.<br>(20.76 - 21.52 mm) |            |

 TESTED  
**1.5kN**

**Strongest** for Equal Weight  
**Lightest** for Equal Strength



Symmetrical Design

No Need to Differentiate between Inside & Outside

Easy & Quick Installation