

BRS-RT-004

Manual Clutch Tool Class 1 - 4



Key Features

Adjustable maximum torque setting from **20 to 200 Nm**.

Supplied with a **calibrated torque wrench and Digital Torque Meter** for accurate torque adjustment and pre-dive verification.

Simple torque setting adjustment without the need to dismantle the tool.

Lightweight construction and optimized tool length for improved ROV handling and operation.

Product Overview

The BRS Torque Tool is a purpose-built tool for ROV manipulator operation of low-torque rotary valve interfaces. It features an adjustable torque-limiting clutch mechanism that controls the maximum torque transmitted from the manipulator to the valve interface during intervention tasks, helping to prevent over-torquing and reduce the risk of damage to the valve or valve stem. The tool is fitted with a self-selecting, spring-loaded “Smart” API17H / ISO 13628-8 Class 1-4 end-effector, which means no end-effector swap or tool change is required when ROV is required to operate multiple valves with various interfaces.

Tool can be also supplied with the separate individual non-spring-loaded API 17H / ISO 13628-8 Class 1|2, 3 or 4 end effectors, API17H / ISO 13628-8 Type A, B or C Paddle type end effectors, or any other types required.

Disclaimer: This datasheet serves as reference only. Actual dimensions and specifications may differ from the details stipulated in this document. Actual specification to be confirmed with Blue Ring Subsea on case-to-case basis.

www.blueringsubsea.com

sales@blueringsubsea.com



BLUE RING
SUBSEA

BRS-RT-004

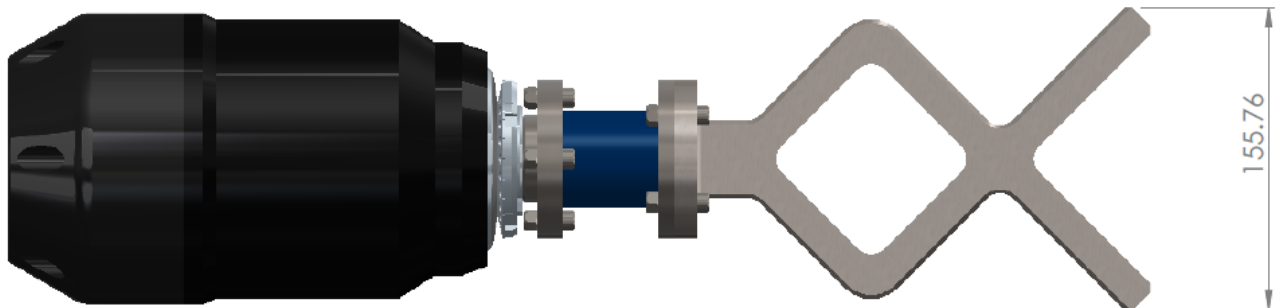
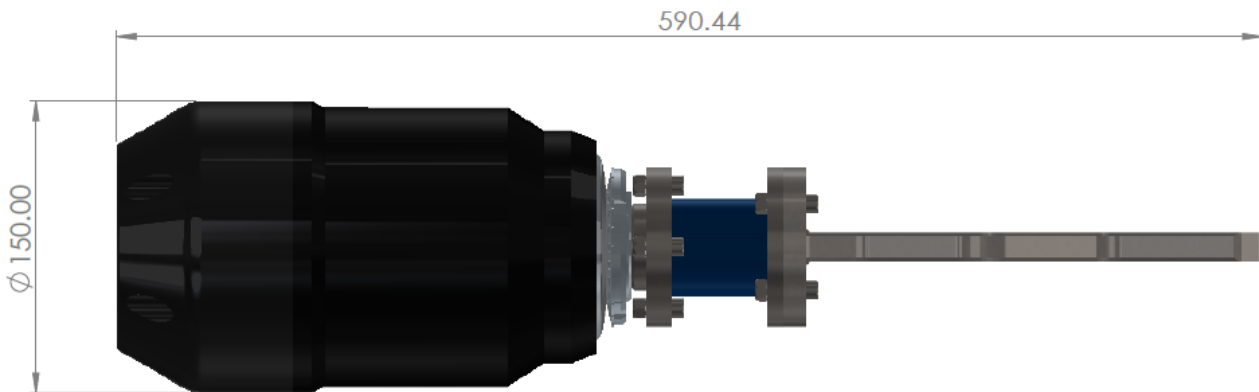
Manual Clutch Tool Class 1 - 4



It is available in D-Handle, Fish Tail, and T-Bar handle configurations, each offered in standard and 45° versions to suit different ROV manipulator types and operational requirements.

Product Specifications:

Torque Range	20 Nm – 200 Nm
Maximum Torque	200 Nm
Depth Rating	3000msw
Weight	
In Air	17 Kg
In water	14 Kg



Disclaimer: This datasheet serves as reference only. Actual dimensions and specifications may differ from the details stipulated in this document. Actual specification to be confirmed with Blue Ring Subsea on case-to-case basis.

www.blueringsubsea.com

sales@blueringsubsea.com



BLUE RING
SUBSEA