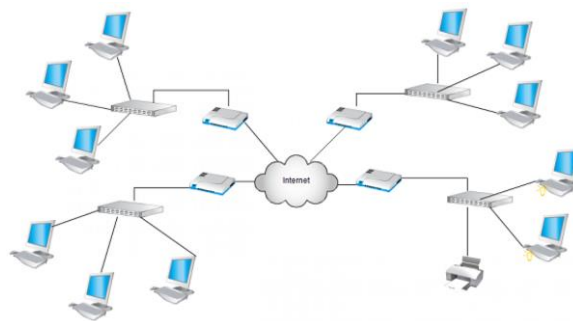


Pacific IT Solutions
2/246 Varsity Parade, Varsity Lake, Gold Coast, QLD 4227
Tel. 0431616438
www.PacificITSolutions.com.au

Daniel Cortez



DESCRIPTION OF REQUIREMENTS

WESTERN MINING 2020

This document will present a detailed description of all the requirements proposed by Pacific IT Solutions for the implementation and distribution of a quality and safe network, in its new office in Brisbane.

FOR THE KNOWLEDGE OF OUR CLIENT:

To consider:

We must take into account and consider that the services of this new network in the new office located in Brisbane, will initially be occupied by a small staff, but that in the future it could increase rapidly. Therefore, we must consider a total of 510 staff connected by department.

Departaments

The new Brisbane office will have 4 departments: Sales, Operations, Management and Exploration.

Security requirements

Western Mining has asked us as a security protocol that the Management department's server should not be accessible from the other 3 departments (Sales, Operations and Exploration).

But likewise, all the staff of the Management department must have full access to the networks of the other 3 departments without exception. In addition to that all devices, both as hosts and servers, must have full access and connectivity to the internet.

It should also be taken into consideration that in the future the Head Office in Sydney could change to use a Non-Cisco router.

OTHER REQUIREMENTS

Since the Head Office in Sydney uses the ip address 172.20.0.0 for all its staff, the Brisbane office requires to use the 172.16.0.0 network for its four departments.

It is required to review and check the sparkies for power and data, to ensure that the cabling and all the devices conform to the network design.

Develop and design a network proposal with all the costs that it needs to be carried out.

As for the routers, these must be the Cisco 2811 model, the switches must be 2960. The central office requires remote access to the routers and switches. IP addresses must be dynamically configured. 48 PCs and 1 server per department must be considered in addition to the cables and connectors that are necessary. In addition, the configuration between both offices must be under the ospf protocol.

Finally, consider that our client has in mind for the near future to transform his network to a wireless design, so we were required to complete a wireless site survey while we carry out our network design.