

READ AND FOLLOW ALL SAFETY INSTRUCTIONS! SAVE THESE INSTRUCTIONS AND DELIVER TO OWNER AFTER INSTALLATION

- To reduce the risk of death, personal injury or property damage from fire, electric shock, falling parts, cuts/abrasions, and other hazards please read all warnings and instructions included with and on the fixture box and all fixture labels.
- Before installing, servicing, or performing routine maintenance upon this equipment, follow these general precautions.
- Installation and service of luminaires should be performed by a qualified licensed electrician.
- Disconnect or turn off power before installation or servicing. Verify that supply voltage is correct by comparing it with the luminaire label information.
- Make all electrical and grounded connections in accordance with the National Electrical Code (NEC) and any applicable local code requirements. All wiring connections should be capped with UL approved recognized wire connectors.
- Wear gloves and safety glasses at all times when removing luminaire from carton, installing, servicing or performing maintenance.

PACKAGING CONTENT

Before beginning installation on this product, make sure all parts are present.

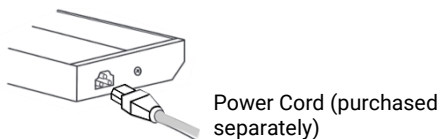
Items Included:

1. 6-Inch Linkable cable x 1
2. 3/8" Romex connector x1
3. Screw rubber cap x2

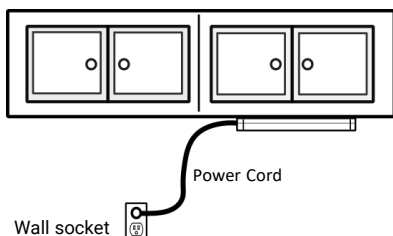
Method A - Plug-In Installation

(skip this step if you are not using hardwired installation)

1. Layout where fixture(s) are to be placed, insuring that first fixture is mounted within 4 feet of an outlet. See Figure 1
2. Plug-in power cord to the INPUT socket. (FIG. 2)



1. Mount fixture to under cabinet or where you plan to locate fixture. Plug power cord into wall outlet and switch on the power from the under cabinet light.

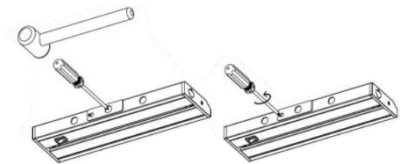


Method B - Hardwired Installation via Rear Compartment

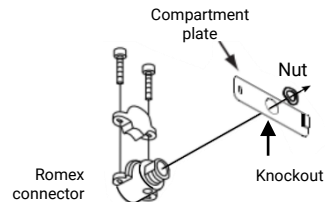
1. The rear access door is located in the middle of the back of housing has its own knockout for quick connection.



2. Punch out the knockout by hammering; then remove the screw off the compartment plate using a screwdriver (not included).

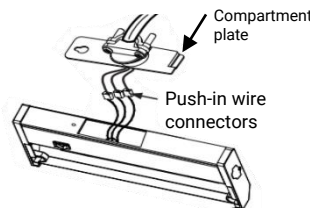


3. Insert Romex connector into the knockout open hole on the compartment plate cover. Secure it with the nut.

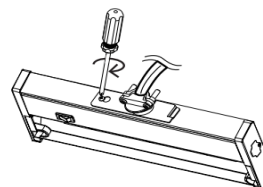


3. Pull 3 wires out of the fixture to allow connection to the branch circuit. Uses push-in wire connectors inside the fixture to make wire connection.

- Black to Black/Hot
- White to White/Neutral
- Yellow/Green stripe <Ground> to bare wire)



4. Feed wires back into fixture, reattach plate cover, tighten screw, and attach the fixture to the base of the cabinet, with screws



How to switch on and change normal light to disinfection light color.

On/Off Switch



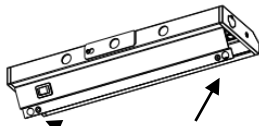
Light Color Selector Switch

1. 3000K (Soft-white)
2. 4000K (Natural-white)
3. 5000K (Daylight)

Method C - Hardwired Installation via Opening Diffuser Cover

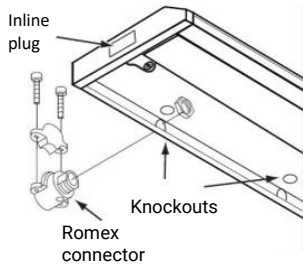
This type of installation is less common – only done when rear compartment plate is not accessible

1. Open wiring compartment by removing screws at each end and lifting cover for housing body.



Remove screws from each end

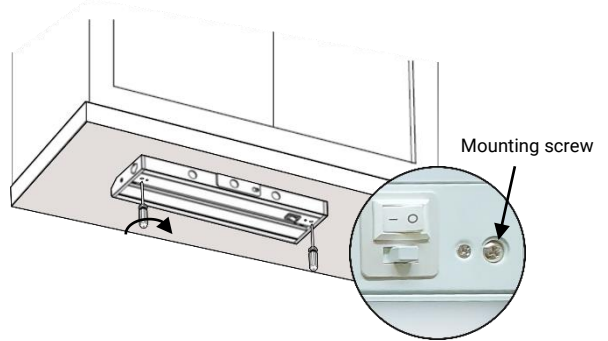
2. Punch out whichever knockout is best suited for connection to 120V lines wires. Knockouts are located along back and top of housing.



3. Install cable connector and connect fixture wires following National Electric Code and/or local building cord requirements. Use minimum 18AWG solid copper wires. AC supply should be 120V protected by circuit breaker or fuse.
4. Attach line voltage AC supply wires to fixture lead wires: Black to Black/Hot, White to White/Neutral and Yellow/Green (Ground) to Green or bare wire inside the fixture. Secure each connection using push-in wire connectors provided on the fixture lead wire. If your system has no ground wire, consult a qualified electrician before proceeding with the installation. Note: Electric shock, overheating, low or no light output and shortened fixture life can result if proper grounding is not done.
5. Replace the wiring compartment cover, securing with the existing retaining screws. Note: Be sure that the wires are not pinched or damaged by any part of the housing or the cover.
6. Follow directions on reverse for mounting fixture.

How to Attach the Light to the Cabinet

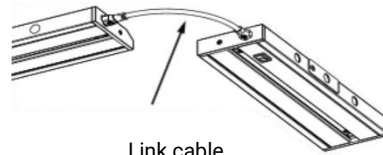
Position the light carefully under the cabinet, use screw driver to tighten the two existing mounting screws (see diagram below) until the fixture is fixed and totally attached to the cabinet bottom.



Mounting screw

Linking up multiple Under Cabinet Light Fixtures

Connect multiple fixtures using Inline connector (included) or 6-inch Link cable (included). Do not exceed max. of 200W per run.



Link cable

WARRANTY INFORMATION

This product is warranted for 2 years from the date of purchase. If this product does not perform to the specifications supplied on this package, send an email or write to the address below for product return and replacement. This replacement is the sole remedy available.

Questions, problems, missing parts?



Before returning to your retailer, contact our customer service

Email: Support@wiloke.com