

commissioned in loving memory of Mr. M.W. Lacy and Mrs. Caroline Morris Lacy,
by their daughter, Julia Lacy Armstrong

SLEEP

for SATB Chorus *a cappella*

CHARLES ANTHONY SILVESTRI

ERIC WHITACRE

Lento; lontano e molto legato

pp

SOPRANO
The eve - ning hangs be - neath the moon, A

ALTO
The eve - ning hangs be - neath the moon, A

TENOR
The eve - ning hangs be - neath the moon, A

BASS
The eve - ning hangs be - neath the moon, A

5

sil - ver thread on dark - ened dune. With clos - ing eyes and

sil - ver thread on dark - ened dune. With clos - ing eyes and

sil - ver thread on dark - ened dune. With clos - ing eyes and

sil - ver thread on dark - ened dune. With clos - ing eyes and

9

rest - ing head I know that sleep is com - ing soon.

rest - ing head I know that sleep is com - ing soon.

rest - ing head I know that sleep is com - ing soon.

rest - ing head I know that sleep is com - ing soon.

A red circle highlights the word 'sleep' in the Bass line. A light blue highlight covers the lyrics of the Bass line.

Poco più mosso

14

mf Up - on my pil - low, safe in bed, _____ *mp* A

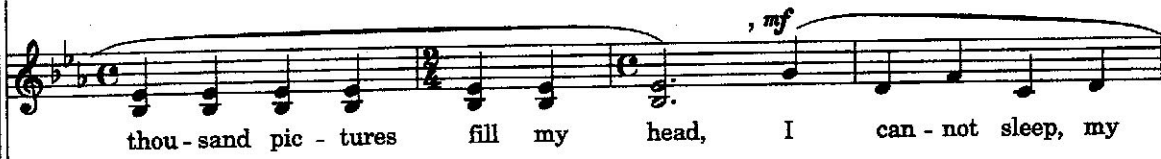
mf Up - on my pil - low, safe in bed, _____ *mp* A

mf Up - on my pil - low, safe in bed, _____ *mp* A

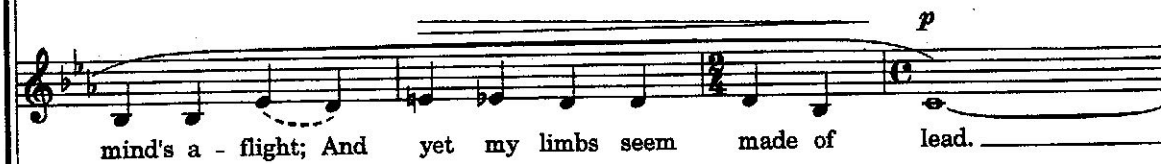
mf Up - on my pil - low, safe in bed, _____ *mp* A

A light blue highlight covers the lyrics of the Bass line.

19



23



27

pp *transparente* *mp* *mp*

If there are nois - es in the night,

pp *transparente* *mp* *mp*

If there are nois - es in the night,

pp *transparente* *mp* *mp*

If there are nois - es in the night,

pp *transparente*

If there are nois - es in

31

mp *mp*

A fright - ening shad - ow, flick - ering light;

mp *mp*

A fright - ening shad - ow, flick - ering light;

mp *mp*

A fright - ening shad - ow, flick - - ering light;

the night, in the night, —

35

mp Where

pp Then I sur - ren - - der un - to sleep, Where *mp*

mp Then I sur - ren - der un - to sleep, Where

mp Then I sur - ren - der un - to sleep,

39

clouds of dream give sec - ond sight.

clouds of dream give sec - ond sight.

clouds of dream give sec - ond sight.

clouds of dream give sec - ond sight.

43 *p* *espressivo*
What dreams may come, both dark and deep, Of

p *espressivo*
What dreams may come, both dark and deep, Of

p *espressivo*
What dreams may come, both dark and deep,

p *mp*
What dreams may come,

47 *f*
fly - ing wings and soar - ing leap As

f
fly - ing wings and soar - ing leap As

dark and deep,

dark and deep,

51

I sur - ren - der un - to sleep, _____ As I sur - ren - der
I sur - ren - der un - to sleep, _____ As I sur - ren - der
f dark and deep, _____ dark _____ and
f dark and deep, _____ dark _____ and

Detailed description: This block contains the first system of music, measures 51 through 54. It features four staves. The top two staves are vocal lines, and the bottom two are piano accompaniment. The music is in a minor key with a 2/4 time signature. The lyrics are: "I sur - ren - der un - to sleep, _____ As I sur - ren - der" on the first two staves, and "dark and deep, _____ dark _____ and" on the last two staves. The piano part includes dynamic markings of *f* (forte).

55

un - to sleep, _____ As I sur - ren - der un - -
un - to sleep, _____ As I sur - ren - der un - -
deep, _____ dark _____ un - - -
deep. _____ dark _____ un - - -

Detailed description: This block contains the second system of music, measures 55 through 58. It continues the four-staff format from the first system. The lyrics are: "un - to sleep, _____ As I sur - ren - der un - -" on the first two staves, and "deep, _____ dark _____ un - - -" on the last two staves. The piano part continues with the same accompaniment.

59 *ff*

to sleep, _____

to sleep, _____

to sleep, _____

to sleep, _____

Detailed description: This block contains four staves of music for measures 59 through 62. Each staff begins with a treble clef and a key signature of two flats. The music is marked with a forte dynamic (*ff*). The notes are grouped into pairs of beamed eighth notes, with each pair connected to the lyrics 'to sleep,' by a horizontal line. The melody in each staff is similar, with slight variations in pitch and rhythm.

63 *p*

sleep, _____ sleep, _____ sleep, _____ sleep, _____ sleep, _____

sleep, _____ sleep, _____ sleep, _____ sleep, _____

sleep, _____ sleep, _____ sleep, _____ sleep, _____ sleep, _____

sleep, _____ sleep, _____ sleep, _____ sleep, _____

Detailed description: This block contains four staves of music for measures 63 through 66. Each staff begins with a treble clef and a key signature of two flats. The music is marked with a piano dynamic (*p*). The notes are grouped into pairs of beamed eighth notes, with each pair connected to the lyrics 'sleep,' by a horizontal line. The melody in each staff is similar, with slight variations in pitch and rhythm.

67 *mf* *p* *dim. poco a poco*

sleep, —

sleep, — sleep, — sleep, —

sleep, — sleep, —

sleep, — sleep, —

**gradually reduce dynamic to a whisper;
repeat and dim. al niente*

71 *ppp*

(sleep,)

sleep, — sleep, — sleep, — sleep, —

sleep, — sleep, — sleep, — sleep, —

sleep, — sleep, — sleep, — sleep, —