



SAFETY FIRST IS
SAFETY ALWAYS

PRODUCT
CATALOGUE

**FIRE & INDUSTRIAL
SAFETY EQUIPMENTS**

Aji GIDC, Road B, Rajkot, Gujarat - INDIA
trade@legionexim.com | +91 91060 31803
www.legionexim.com

SAFETY SHOES

CODE 01



PAROTECO, PASSION PLUS DD

CODE 02



PASSION SD

CODE 03



CRUSADER S001

CODE 04



CRUSADER S001-R

CODE 05



CRUSADER_S003

CODE 06



PROTECTO_AEROSPACE

CODE 07



PROTECTO_COMFORT

CODE 08



JAMA JS062 DD

CODE 09



JAMA JS73-SD

CODE 10



JAMA J559 DD

CODE 11



JAMA JS100

CODE 12



JAMA JS10

CODE 13



JAMA JS013

CODE 14



JAMA JS09

CODE 15



JAMA JS14

CODE 16



JAMA JS007

CODE 17



JAMA CHERY

CODE 18



JAMA JS054

CODE 19



JAMA JS-004

CODE 20



DAPRO, OPERATOR 1

CODE 21



DAPRO NOBLE

CODE 22



DAPRO ELEMENT 1

CODE 23



DAPRO ELEMENT 2

CODE 24



VIKRANT DD

CODE 25



WORKTOES, SCOTT

CODE 26



WORKTOES HARVEY

CODE 27



WORKTOES PICASSO

CODE 28



DUSTER-ISI-BLACK

CODE 29



BEETEL-ISI-BLACK

CODE 30



ROCKFORD-GREY



CODE 31

HUMMER-BL ACK



CODE 32

PASSION-GREY



CODE 33

CRUSHER-ORANGE



CODE 34

POWER-BL ACK



CODE 35

LDS-05



CODE 36

SUPREME GUM BOOT



CODE 37

BAHUBALI



CODE 38

SUPREME-YELLOW



CODE 39

HILLSON NO-RISK ,326



CODE 40

POLO PLUS



CODE 41

SAFETY TOE



SAFETY WEAR



BOILER SUIT



COLD STORAGE SUIT



PVC CHEMICAL SUIT



DISPOSABLE NON OVEN SUIT



AIRTIGHT SUIT



NOMEX FIRE SUIT



ALLUMINIZED FIRE PROXIMITY SUIT



PVC APRON



DOCTOR APRON



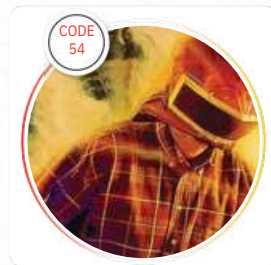
WELDING LEATHER APRON



ALLUMINIZED APRON



HALF-MASK T2000 WITH HOOD



FIRE ESCAPE MASK



JS 3018 AIRLINE SYSTEM



JS3024 PAPR WITH TYCHEM F SUIT

HEAD COVER
PVC Head Covers Are Fluid-resistant

GOGGLES OR FACE SHIELD
Goggles And Face Shields Made Of PVC Offer A High Level Of Protection And Visibility.

SURGICAL GLOVES
Surgical Vinyl Gloves Are Hygenic And Inexpensive

GOWN
Gowns Made Of PVC Are Impermeable And Resistant To Pathogens.

APRON
PVC Aprons Are Impermeable And Resistant To Pathogens.

CLEANER'S GLOVES
Cleaner's Gloves Of PVC Are Heavy-duty And Can Be Washed And Sterilised After Use.

BOOTS
Light-weight, Heavy-duty And Anti-slip PVC Boots. Can Be Sterilised After Use

SAFETY GLOVES



CODE 57

COTTON KNITTED HAND GLOVES WHITE - BLUE



CODE 58

PVC DOTTED GLOVES



CODE 59

HOSIERY DOUBLE LAYER HAND GLOVES



CODE 60

NITRILE COATED CUT RESISTANT GLOVES



CODE 61

PU COATED HAND GLOVES CUT 1



CODE 62

LATEX COATED GLOVES CUT 2



CODE 63

HALF KEVLAR LEATHER GLOVES 300 TO 600C



CODE 64

FULL KEVLAR GLOVES 300 TO 600C



CODE 65

ALLUMINIZES GLOVES HEAT PROOF



CODE 66

CRYEGONIC HAND GLOVES



CODE 67

FIRE FIGHTING GLOVES



CODE 68

LEATHER HAND GLOVES



CODE 69

REDVINTER LEATHER HAND GLOVES



CODE 70

JEANS GLOVES GOOD QUALITY



CODE 71

RUBBER HAND GLOVES ORANGE



CODE 72

DIP NITRILE CE APPROVED



CODE 73

KIMBERLY CLARK G20 NITRILE GLOVES



CODE 74

NITRILE GLOVES WITH FLOCK LINING



CODE 75

EXAMINATION NITRILE HAND GLOVES 100PCS



CODE 76

EXAMINATION LATEX POWDER GLOVES 100 PCS



CODE 77

HOUSE HOLD HAND GLOVES



CODE 78

CHAINEX SILVER GLOVES CUT PROOF



CODE 79

PVC SUPPORTED COTTON LINING GLOVES



CODE 80

NEOPRENE RUBBER GLOVES



CODE 81

CANVAS PALM TEATHER



CODE 82

CG LEATHER BIKE GLOVES



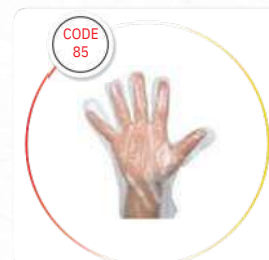
CODE 83

ELECTRICAL ISI MARK GLOVES



CODE 84

COTTON KNITTED HAND SLEEVES



CODE 85

DISPOSABLE HAND GLOVES 100PCS



CODE 86

DRILL COTTON HAND GLOVES

SAFETY HELMET



CODE 87

HELMET ISI MARK



CODE 88

LADIES HELMET ISI



CODE 89

MI HELMET



CODE 90

UDYOGI 5000 LRX



CODE 91

UDYOGI ULTRA-VENT 7000LRX



CODE 92

KARAM PN501



CODE 93

KARAM PN521 WITH RATCHET



CODE 94

SAFETY HELMET WITH HEAD LIGHT



CODE 95

COOLING HELMET



CODE 96

FIRE HELMET



CODE 97

CLEAR FACE SHIELD



CODE 98

WINDSOR CLEAR FACE SHIELD



CODE 99

WELDING HEAD SCREEN TIGWELD



CODE 100

AUTO DARK WELDING HELMET



CODE 101

BUMP CAP



WHITE For Engineers, Managers, Supervisors & Foremen

GRAY For Site Visitors



GREEN For Safety Officers



BLUE: For Electricians, Carpenters And Other Technical Operators.



BROWN: For Welders And Workers With High Heat Application



RED For Fire Fighters.



YELLOW: For Labourers And Earth Moving Operators



SAFETY MASK



DUST MASK



PROMAX MASK



PROMAX 410 FFP1



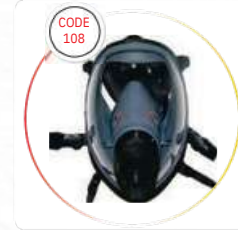
PEOMAX FFP2



PS 140 SL GREY



VENUS HALF FACE MASK
DOUBLE CARTAGE



VENUS FULL FACE MASK



VENUS V44++ FFP1



3M-9004 IN, 19



VENUS HALF FACE MASK
SINGLE CARTAGE



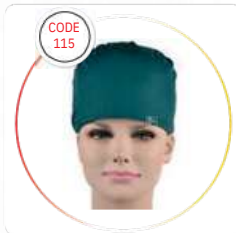
DISPOSABLE MASK



SHOE COVER



DISPOSABLE CAP



DOCTOR CAP GREEN

SAFETY GOGGLES



KARMA V10



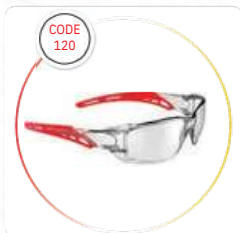
KARMA E5001



3M 1709



VENUS G-102 ISI
SAFETY GIGGLES



VENUS G-305
ANTY FOG GOGGLES



V100 SAFETY GOGGLES



KARMA-V70HC



OVER SPECT



WELDING GOGGLES
DOUBLE FRAME



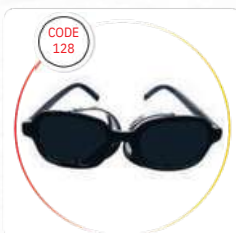
CHEMICAL FLASH



KARAM WELDING GOGGLES



UDTOGI-UD -71



JALI GOGGLES

ROAD SAFETY



CODE 129

SAFETY-CONE



CODE 130

SAFETY CHAIN PVC



CODE 131

HEAVY DUTY SAFETY CONE



CODE 132

SAFETY CONE CONNECTING ROAD



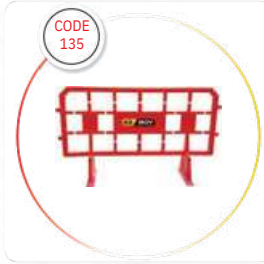
CODE 133

SPRING POST



CODE 134

AXNOY-1-1MTR-PORTABLE-BARRIER



CODE 135

FENCE-BARRIER



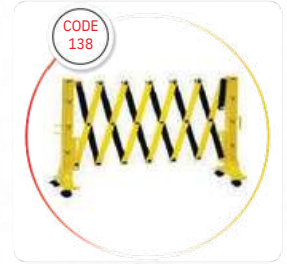
CODE 136

3-PC-BARRIER



CODE 137

SAND-CRASH-BARRIER



CODE 138

ROAD BARRIERS PORTABLE SPRING TYPE FOLDING



CODE 139

PASTIC SPEED BREAKER



CODE 140

RUBBEA SPEED BREAKER



CODE 141

RUMBLER



CODE 142

CAR STOPPER



CODE 143

WHEEL STOPPER



CODE 144

ROAD STUD



CODE 145

SOLAR ROAD STUD



CODE 146

SOLAR DELINATOR



CODE 147

BARRICADE SOLAR BLINKER DELINEATOR WITH CLAMP



CODE 148

CONVEX MIRROR



CODE 149

CAR WHEEL LOCK



CODE 150

BUTTON LIGHT



CODE 151

Q MANAGER STAND



CODE 152

Q MANAGER LUXURY VELVET PATTI PER SET



CODE 153

CAR CHEKER



CODE 154

BARIGETTING TAPE ROLL



CODE 155

ANTI SKID TAPE ADHASIV



CODE 156

REDIUM 3M TYPE TAPE



CODE 157

SAFETY-BARRICADE-NET

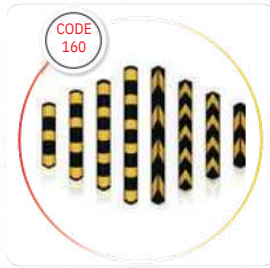


CODE 158

FLOOR MARKING TAPE



CODE 159
HIGH-COMPRESSION-RESISTANT-FLEXIBLE-2-CHANNEL-RUBBER-CABLE PROTECTOR



CODE 160
WALL-PROTECTION-CORNER GUARD



CODE 161
KNUFFI-HEAD PROTECTION



CODE 162
CROSS BEFT



CODE 163
REFLECTIVE JACKET



FIRE SAFETY



ABC -FIRE-EX TIGUISHERS



BC-POWDER-FIRE-EXTINGUISHER



WATER-FOAM-FIRE-EXTINGUISHER



CO2-BASED-FIRE-EXTINGUISHERS



CLEAN-AGENT-FIRE-EXTINGUISHERS



SPECIAL-APPLICATION-FIRE-EXTINGUISHERS



AUTOMATIC-MODULAR-TYPE-FIRE-EXTINGUISHERS



ELECTRIC AL-C ABINETS-PANEL-DLP



PRE ENGINEERED SYSTEMS-FIRE TRACE



KITCHEN SUPPRESSION SYSTEM



TOTAL FLOODING SYSTEM



POWDER-FILLING-MACHINE



FIRE BELL



MOBILE FOAM TROLLEY



WATER MONITOR



SHORT BRANCH PIPE 63MM ISI



MALE FEMALE COUPLING



SHUT OFF NOZZLE



SPLINKERS



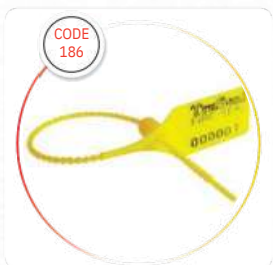
ABC PIN



FIRE EXTINGUISHER PRESSURE GAUGE



ABC VALVE



FIRE EXTINGUISHER SEAL



FIRE HYDRANT DCP CAP WITH CHAIN



CO2 HORN EXTINGUISHER FOR 4.5 KG.



FIRE EXTINGUISHER DCP CHAIN WITH CLIP



FIRE EXTINGUISHER CO2 HORN WITH BAND WITH 2KG



FIRE TRIPAL PURPOSE NOZZLE



FIRE HYDRANT INLET 2WAY



FIRE HYDRANT VALVE 63MM



FIRE HOSE REAL WITH SETUP NOZZLE 30MTR



FIRE HOSE PIPE ISI 15 MTR A TYPE



FIRE HOSE PIPE B TYPE 15 MTR



FIRE HOUSE BOX DOUBLE DOOR



FIRE BLANKET FIBER CERAMIC 1X2 MTR



FIRE ALARM PENAL 2 ZONE



AFO FIRE BALL



FIRE AXE



FIRE BUCKET STAND 4 BUCKET



FIRE EXT STAND



FIRE ALARM PENAL 2 ZONE



AFF FOAM NOZZLE LINE



SPARK ARRESTOR HMV



SMOKE DETECTOR



ABC POWDER ISI



DCP POWDER ISI



WIND SOCK CLOTH WITH STAND



AFFF, AR-AFFF FOAM

WATER:
Used On Paper, Wood Coal, Cardboard And Other Solid Fuel Fires.



SOLID RED

FOAM:
Used On Solid Fuel Fires As Well As Flammable Liquids.



CREAM

POWDER:
Used On Solid Fuel Fires As Well As Flammable Liquids.



BLUE

Co2:
Used On Flammable Liquids And Electrical Fires.



BLACK

WET CHEMICAL:
Used On Cooking Oil Fires As Well As Combustible Solid Materials.



YELLOW

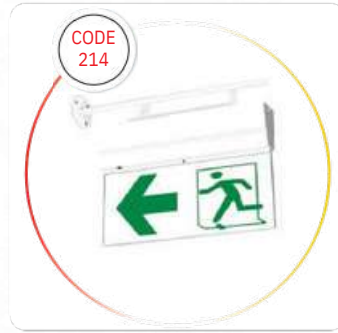
SAFETY SIGN BOARD



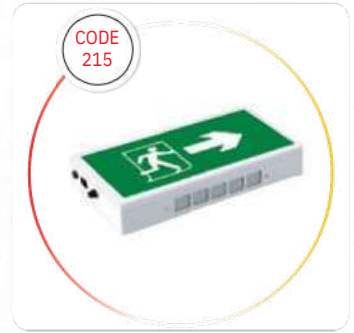
EMERGENCY BEAM LIGHT



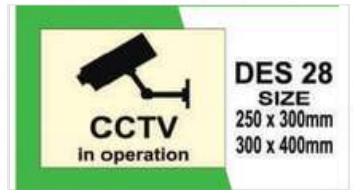
EMERGENCY EXIT BEAM LIGHT



LED EXIT LIGHT



EXIT LIGHT



MISC ITEMS

CODE 216



EYE WASH UNIT

CODE 217



EYE WASH BOTTLE

CODE 218



POLICE HOOTER SMALL SIZE

CODE 219



INDUSTRIAL SIREN
MANUAL 1KM RANG

CODE 220



DOUBLE MOUNTAIN SIREN

CODE 221



ELECTRICAL BELL

CODE 222



SIREN WITH STAND

CODE 223



MARIN JACKET GOVT. APP..

CODE 224



WORK VEST JACKET

CODE 225



MARINE RING GOVT.
APPROVAL

CODE 226



STRETCHER SIMPLE

CODE 227



FOLDING STRETCHER

CODE 228



FIRST AID KIT (METAL)
WITH MEDICINEBOX

CODE 229



FIRST AID KIT (FIBER) WITH
MEDICINE BOX

CODE 230



FIRST AID KIT THADANI

CODE 231



FIRST AID KIT INDUSTRIAL
BAG WITH MEDICINE BOX

CODE 232



ROPE LADDER WODDEN
P MTR

CODE 233



FRP LADDER PER FT

CODE 234



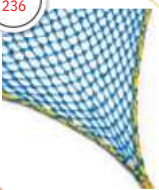
RUBBER MET FOR ELECTRIC
PURPUSE 6 MM

CODE 235



RUBBER METT BLUE
ISI MARK

CODE 236



SAFETY NET PER SQ MTR

CODE 237



GREEN NET FOR
CONSTRUCTION

CODE 238



P P ROPE PER KG

CODE 239



COTTON WEST PER KG

CODE 240



3M EAR PLUG

CODE 241



REUSABLE-EAR-PLUG

CODE 242



3M-1426 EAR MUFF

CODE 243



EAR PLUG DISPENSER

CODE 244



ALUMINIUM LADER PERFECT
PER FT

CODE 245



SAFETY BELT HALF BODY



RECRATABLE KARAM
FALL ARRESTOR BLOCK 15 MTR



SAFETY BELT ISI HOOK SCAP



UDYOGI SAFETY BELT SCAP
HOOK-SHOCK ABSORBERS



ENCOURAGE ROPE PER MTR



FALL ARRESTOR



KARAM SAFETY BELT KI01



BREATHING APPARATUS
B.A SET 30 MNT



METAL DETECTOR



DOOR FRAME METAL DETECTOR
SINGLE MULTIZONE



GROUP LOTTO BOX



LED TORCH NENO 1KM RANG



ALL TYPES OF DUST BIN



ALL TYPES OF INDUSTRIAL BIN



TENT 18 X 12FT



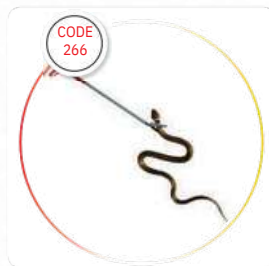
MEASURING TAPE 5MTR
INCH TAPE



POST BOX LATER BOX



SORBENTS & SPILL KITS



SNAKE-C ATCHER-STICK



FIRE STOP BOTTLE



STATUE DAMI MANQUE



FOOT-OPERATED-SAFETY-
SHOWER-CUM-EYEWASH



LIFTING BELT



LEATHER LEG GUARD



LEATHER HAND SLEEVES