



HANGCHA GROUP CO., LTD.

Factory site: 666 Xiangfu Road,
Hangzhou, Zhejiang, China (311305)

Tel: +86-571-88926735 88926755
Fax: +86-571-88926789 88132890

sales@hcforklift.com
www.hcforklift.com



HANGCHA GROUP CO., LTD. reserves the right to make any changes without notice concerning colors, equipment, or specifications detailed in this brochure, or to discontinue individual models. The colors of trucks, delivered may differ slightly from those in brochures.

XF2 Series IC Counterbalanced Trucks

with capacity of 1,500 to 3,500kg

STAGE V
CERTIFIED



The World of Hangcha
SINCE 1956



FOR HIGH PERFORMANCE DURING WORKING



Appearance

A vivid and sturdy exterior inheriting the classic design, embodying innovative ideas, and bringing a strong high-tech impact.



Safe

- / The vehicle has a low center of gravity design and optimized operating vision. (small counterweight design, backward tilting counterweight design, optimized triplex mast design).
- / OPS system is provided for the standard configuration and optionally an adjustable speed limit range of several segments is provided.



Mast

Can be easily installed with J-hooks through a simple process.





***MORE VISION
MORE CONTROL
MORE GUARANTEE***

All-round visibility

Optimized design provides outstanding visibility in all directions.

COMFORTABLE

- / The fully-suspended gearbox, fully-suspended overhead guard, and fully-suspended seat realize three-stage vibration reduction to reduce vibration of the vehicle.
- / Noise control: Special sound-absorbing cotton is attached to certain parts and so on to decrease the vehicle's noise.
- / Optimized ergonomic design, enlarged cab space, an optional new-generation fingertip operating system.



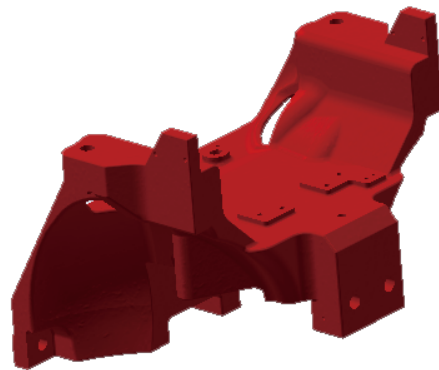
The fully-suspended gearbox



Fully-suspended overhead guard

Truck Construction

With the novel designed cast steering axle mounts, the center of gravity is lowered, and the vehicle's noise radiation is reduced. An integrated fully-suspended overhead guard is provided for the standard configuration, and customers can choose cab. Large plate stamping and molding processes and automatic welding technology are used to enable a stylish exterior.



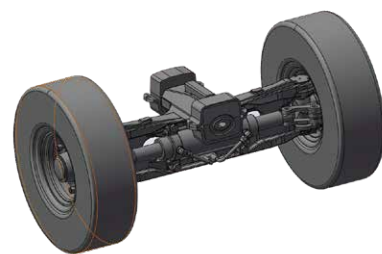
Cast steering axle mounts

Control system

- / Breaking through the limitation of the traditional steering axle structure, the newly developed cast open steering axle has the maximum internal turning angle increased from 77° to 82°, it can help customers work in narrow space.
- / With the cast open steering axle, the oil cylinder can be replaced easily, and the vehicle has a low center of gravity and good stability.
- / The steering axle is installed with pads, which effectively improve the operation comfort and reliability.
- / Parking brake: A central brake requiring less operating force.



An optional pedal parking brake

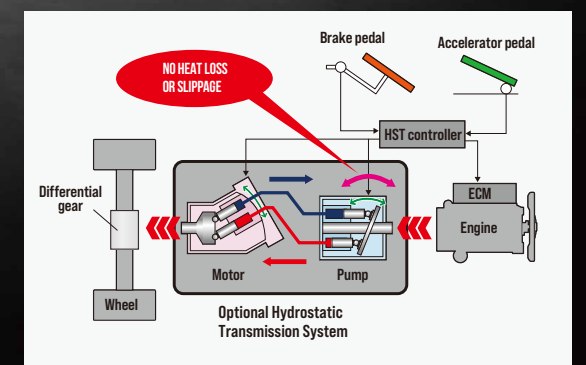


Cast steering axle



Optional hydrostatic transmission system

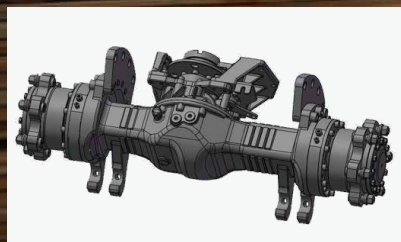
- / In this system, the engine drives a hydraulic pump and the pressure is transferred to a hydraulic motor mounted on the drive axle, then the motor outputs traction to the drive wheels via a gear reducer and a differential.
- / As this system has no clutch to be used by the hydraulic transmission forklift truck, it does not cause heat loss and wear from inching operation, minimizing transmission losses and reducing fuel consumption.
- / The hydrostatic drive system will automatically brake when the accelerator is released, leading to less wear and tear on the brake and tyres, and longer service life.
- / Equipped with the adjustable speed setting and turning deceleration function, driving safety can be ensured from all aspects.
- / Three operating modes (E, N, S) are freely selectable, providing simple and precise control and allowing optimal working efficiency in a wide range of operating conditions.



THE POWER TO PERFORM

Reliable

- / A wet axle is developed and used to significantly improve the reliability of the braking system and force transmission structural parts. (Wet brake, custom high-strength bolts, wheel side planetary reducer).
- / Wet brake drive axle + enhanced SHAOCHI/ OKAMURA enhanced gearbox. Both the drive axle and the gearbox are expected to have a service life of far longer than 10 years, and the wet brake 10 years. Enhanced four-piece rims are used.



Wet brake drive axle

Hydraulic

A high-pressure hydraulic system and load-sensing steering-priority-ensured multiway valves are used to improve system efficiency. A low-noise Shimadzu gear pump can improve reliability and reduce noise. All joints are 24° conic joints and each high-pressure pipe joint has a pressure measuring port, to enable better sealing and maintainability.

E SERIES engines and an enhanced gearbox are developed and used to significantly improve the reliability of the power train. (E series engines match the enhanced F gearbox and new Okamura gearbox).



High Power



Heat Dissipation

Power

- / The highly cost-effective Xinchai 3E22 diesel engine meets EU V emission requirements.
- / The engine has been tested for 10000h in total for reliability validation in several round, the reliability has been fully verified. It is worth mentioning that the diesel engine has been tested in Jinan testing center and Bosch Wuxi test bench for 3000h. The diesel engine has excellent reliability, and is rated as Bosch off-road project 'BES' award.
- / A plate-fin heat dissipater with less air resistance is developed, which has a heat dissipation efficiency increased by 15%.



0.44%

Very low dilution ratio of engine oil, the oil dilution ratio after single regeneration is only 0.44%, much lower than the value of 20% specified in the national standard, the oil change interval of E series diesel engine up to 500h.



5,000h

DPF has a long maintenance interval, Based on excellent engine raw emission level and regeneration strategy, the ash cleaning interval up to 5000h.



DPF



E series engine

FULLY AUTOMATED

Electrical system

- / Streamer LED taillights are developed and used to make the vehicle more ethereal with a strong high-tech impact.
- / The new-generation high-efficiency energy-saving novel combination LED lighting system is energy-saving, while the performance and service life of the lights are significantly improved.
- / In order to improve the protection level, and connectors are all waterproof.



Streamer LED taillights

Intelligent

- / Interactive instruments are provided for the standard configuration, to display the operating status of the vehicle, and realize the information interaction of the vehicle.
- / An intelligent controller can realize the functions of OPS system, and flameout for idle speed time out, and can have other optional functions of speed control, speed limiting for faults, lifting at a high idle speed, automatic fork leveling, etc.



New interactive instruments



Standards

Truck	Transmission	Steering	Power	Body
<div><div>/ Reinforced wheel rim</div><div>/ Mechanical handbrake</div><div>/ Dynamic load sending control valve</div></div>	<div><div>/ Fully-suspended gearbox</div></div>	<div><div>/ Wet braking drive axle</div><div>/ Fully hydraulic power steering gear</div><div>/ Open cast steering axle</div><div>/ Steering wheel adjusting device</div></div>	<div><div>/ High-efficiency air filter</div><div>/ High-efficiency air intake silencer</div><div>/ Low-position exhauster</div><div>/ Fan protection device</div></div>	<div><div>/ Traction pin</div><div>/ Counterweight grille cover</div><div>/ Lockable hood</div></div>
Hydraulic	Electrical	Portal	Overhead Guard	Mast
<div><div>/ Electro-hydraulic steering</div><div>/ Low-noise gear pump</div><div>/ High-pressure hydraulic system</div><div>/ Hydraulic oil recycling filter</div></div>	<div><div>/ Multifunctional interactive instruments(EU StageV)</div><div>/ Combination LED lighting system</div><div>/ Integrated combination switch</div><div>/ Main power switch</div><div>/ Soft landing</div><div>/ OPS system</div></div>	<div><div>/ Speed limiting valve of the mast</div></div>	<div><div>/ PVC ceiling</div><div>/ Fully-suspended overhead guard</div><div>/ Right rear armrest with horn button</div></div>	<div><div>/ Full free duplex mast</div><div>/ Different length of fork</div><div>/ Triplex mast</div><div>/ Wider fork carriage</div><div>/ Heightened load backrest</div><div>/ Duplex mast</div></div>

Options

Truck	Power	Hydraulic	Electrical
<div><div>/ Cab</div><div>/ Heater</div><div>/ Front windshield and wiper</div><div>/ Customer paint</div><div>/ Solid tire</div><div>/ Fan</div><div>/ Dual air filter</div><div>/ Low-temperature starting battery</div><div>/ LED rear working light</div><div>/ Fully-suspended seat</div><div>/ Fire extinguisher (1kg)</div></div>	<div><div>/ High-position exhauster</div></div>	<div><div>/ 5th valve</div></div>	<div><div>/ External spark extinguisher</div><div>/ Multi-segment adjustable speed limit</div><div>/ Blue light</div><div>/ Audible and visual alarm</div></div>
Transmission	Body	Overhead Guard	Control
<div><div>/ Dual front wheel</div></div>	<div><div>/ Rotating handle of water tank lid</div><div>/ Dissipater grille cover</div><div>/ Fuel tank cap with lock</div><div>/ Additional L/R rearview mirrors</div></div>	<div><div>/ Perforated overhead guard</div></div>	<div><div>/ Fingertip system</div><div>/ Pedal parking brake</div></div>
Attachments			
<div><div>/ Paper roll clamp</div><div>/ Rotatable roll clamp</div><div>/ Load stabilizer</div><div>/ Multi-purpose barrel clamp</div><div>/ Weighing system</div></div>	<div><div>/ Sideshifter</div><div>/ Rotating fork</div><div>/ Fork sleeve</div><div>/ Crane arm</div><div>/ Special fork</div></div>	<div><div>/ Soft package clamp</div><div>/ Oil barrel clamp</div><div>/ Tipping clamp</div><div>/ Hook</div></div>	<div><div>/ Carton clamp</div><div>/ Push-pull device</div><div>/ Bucket</div><div>/ String Pole</div></div>