

PHILIPS

Personal Health

Designed for the Special YOU

Choose from a wide range of
Philips Personal Health products



Philips India Ltd.
Tower No. 3, 4th Floor, Bharti Worldmark Building,
Sector 65, Gurgaon - 122001, Haryana

Philips Consumer Care Contact Numbers
1800-102-2929 (Toll free)
1860-180-1111 (Standard call rates apply)
www.philips.co.in/support

innovation  you

*Terms & conditions apply. Applicable during valid warranty period and in select cities only.
For more details, visit : www.philips.co.in

Why **Philips** is the best



Personal Health is improving more than **8.5 million** lives every year



For **100% quality assurance**, all our products go through 215 quality tests on an average



2 Billion Euros are spent every year in Research & Development



We offer **2 years Worldwide Warranty** on all our products for complete peace of mind



Our innovation culture has helped build an IP portfolio of **76k patents** and **47k trademarks**



Get service anywhere through our **242 service centers** across India

Style is a way to say who you are without having to speak

Best of service for guaranteed satisfaction



Male Grooming

	Page No.
 All-in-one Trimmers	08
 Beard Trimmers	12
 OneBlade	24
 Shavers	28
 Body Groomers	32
 Nose, Ear & Eyebrow Trimmer	36

Beauty

	Page No.
 Hair Straighteners	38
 Hair Dryers	48
 Hair Straightening Brushes	56
 Stylers	60
 Epilators and Shavers	64
 Female Trimmers	68

Mother & Child Care

	Page No.
 Breast Pump & Accessories	76
 Sterilization	78
 Infant Feeding	80
 Sippers	86
 Soothers	88

Oral Health Care

	Page No.
 Sonic Electric Toothbrush	90
 Plaque Defence Brush Head	96
 Electric Toothbrush	97
 Replacement Brush Head	98

Why Philips Mens Grooming range are the best choice for you!



BeardSense technology
For a consistent trimming performance even on dense, bushy & long beards.



Dual cut technology
for Salon like professional results



Head to toe grooming solutions



Self sharpening blades
Stay as sharp as day 1 even after 3 years of usage



DuraPower technology
Lasts longer than 6 ordinary trimmers put together*



Rounded tip blades
Ensuring enhanced skin protection



Lift & Trim system
For an even trim & 30% faster cutting*



Ergonomic Design
For easy & comfortable handling



No oil required
Philips trimmers do not require any kind of oil to be used



3 year warranty*
Standard 2 year warranty + additional 1 year warranty on registering on philips.co.in

*Only applicable on series 3000 & series 7000 trimmers.

+Basis battery comparison between Philips & an ordinary trimmer. Tested under standard conditions

*Applicable only on all Male grooming products above MRP ₹ 1400 MRP except for OneBlade model QP2512/QP2525/QP2532

All-in-one Trimmers



Groom like a pro,
from head to toe

All-in-one Trimmers

MG7707/15

3 year warranty*



Dual cut technology for Salon like professional results



BeardSense Technology checks the beard density 125 times per sec.



Nose & Ear trimmer attachment



Detail metal trimmer for fine beard edging



Head to toe grooming solutions



8 impact resistant combs



Charge once and use upto 6 weeks (90 mins. run time/ 1 hour charge)



5 mins. quick charge

*Standard 2 year international warranty + get additional 1 year warranty by registering on www.philips.co.in
*Based on using 3 times a week, each time for 5 minutes

All-in-one Trimmers

MG3750/33



Dual cut technology for Salon like professional results



Precision shaver attachment



Self-sharpening blades



Full metal detailer



Head to toe grooming solutions



7 impact resistant combs



Charge once and use upto 4 weeks (60 mins. run time/16 hour charge)



Soft rubber grip

*Standard 2 year international warranty + get additional 1 year warranty by registering on www.philips.co.in
*Based on using 3 times a week, each time for 5 minutes

All-in-one Trimmers

MG3721/65



7-in-1 tools for face, hair & body



Self-sharpening blades



Hair clipping to your length



Nose trimming



Create clean, straight lines and evenly trim



5 impact resistant combs



Body Grooming



Charge once and use upto 4 weeks (60 mins. run time/16 hour charge)

*Standard 2 year international warranty + get additional 1 year warranty by registering on www.philips.co.in
*Based on using 3 times a week, each time for 5 minutes

Beard Trimmers



Perfect trim
day after day

Beard Trimmers

Ultra precision Beard Trimmers

Get that perfectly even beard
with ease



BT3435/15



BT3415/15

Beard Trimmers



BeardSense technology

The BeardSense technology checks the hair density of your beard 125 times per second and automatically adapts the motor to maintain constant cutting performance.



SENSES BEARD DENSITY AT

125
TIMES PER SEC



Tackles dense, bushy and long beards for a precise trim



Beard Trimmers

BT3435/15



2.5x more precision control starting with 0.2 mm precision steps



BeardSense Technology checks the beard density 125 times per sec.



Click-on precision trimmer to define edges



Self-sharpening titanium blade



Lift & Trim Technology



Skin-friendly blades



Battery indicator



Charge once & use up to 4 weeks* (60 mins. run time/ 1 hour charge)

*Standard 2 year international warranty + get additional 1 year warranty by registering on www.philips.co.in
*Based on using 3 times a week, each time for 5 minutes

Beard Trimmers

BT3415/15



Lift & Trim Technology



2.5x more precision control starting with 0.2 mm precision steps



DuraPower technology 4x longer battery life



Ergonomic design for a better grip & use



BeardSense Technology checks the beard density 125 times per sec.



Self-sharpening stainless steel blade



Skin-friendly blades



Charge once & use up to 4 weeks* (60 mins. run time/ 1 hour charge)

*Standard 2 year international warranty + get additional 1 year warranty by registering on www.philips.co.in
*Based on using 3 times a week, each time for 5 minutes

Beard Trimmers

BT3302/15



10 length settings between 0.5-10mm.



Lift & Trim Technology



DuraPower technology 4x longer battery life



USB charging



Self-sharpening stainless steel blade



Skin-friendly blades



Easy to clean



Charge once & use up to 4 weeks* (60 mins. run time/ 1.5 hours charge)

*Standard 2 year international warranty + get additional 1 year warranty by registering on www.philips.co.in
*Based on using 3 times a week, each time for 5 minutes

Beard Trimmers

BT3235/15



Power Adapt Sensor for that perfectly even trim



Lift & Trim comb guides hair to the blades for an even trim



Comes with a precision trimmer attachment



Titanium coated blades



Skin friendly blades with rounded tips



20 length settings, 0.5mm precision



DuraPower technology 4x longer battery life



Charge once & use up to 4 weeks* (60 mins. run time / 1 hour charge)

*Standard 2 year international warranty + get additional 1 year warranty by registering on www.philips.co.in
*Based on using 3 times a week, each time for 5 minutes

Beard Trimmers

BT3125/15



Power Adapt Sensor for that perfectly even trim



Lift & Trim comb guides hair to the blades for an even trim



Self-sharpening stainless steel blade



Skin friendly blades with rounded tips



20 length settings, 0.5mm precision



DuraPower technology 4x longer battery life



Charge once & use up to 3 weeks* (45 mins. run time / 2 hours charge)

*Standard 2 year international warranty + get additional 1 year warranty by registering on www.philips.co.in
*Based on using 3 times a week, each time for 5 minutes

Beard Trimmers

BT3102/15

3 year warranty*



Lift & Trim comb guides hair to the blades for an even trim



Skin friendly blades with rounded tips



Ergonomic Design for easier handling



DuraPower technology 4x longer battery life



Stainless steel blades



10 lock-in length settings, 0.5 - 10mm with 1mm precision



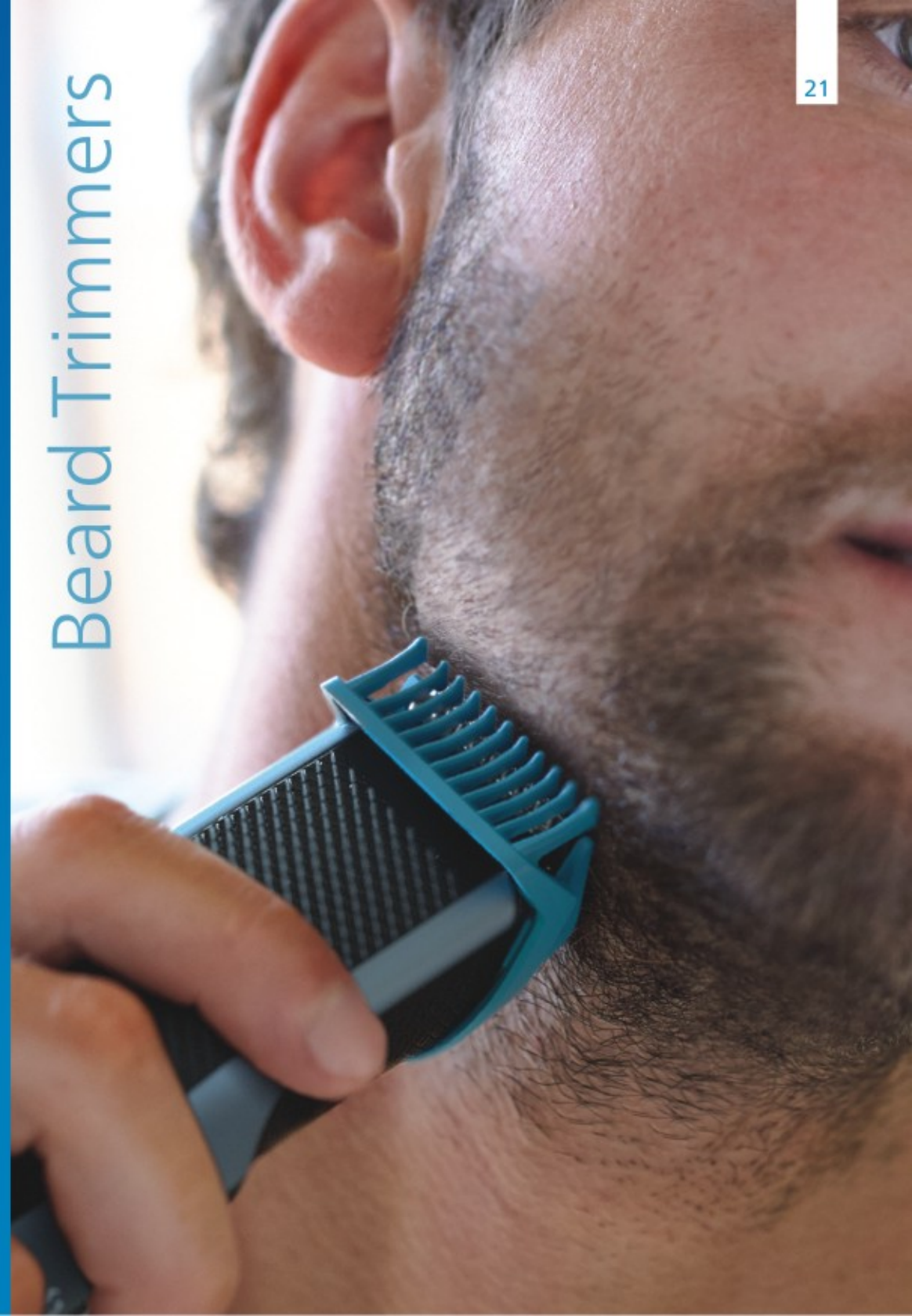
Cordless use only



Charge once & use up to 4 weeks* (60 mins. run time/ 10 hours charge)

*Standard 2 year international warranty + get additional 1 year warranty by registering on www.philips.co.in
*Based on using 3 times a week, each time for 5 minutes

Beard Trimmers



Beard Trimmers

BT1235/18



Skin-friendly rounded tip blades for smooth skin contact



Self-sharpening stainless steel blade



DuraPower technology 4x longer battery life



Ergonomic design for a better grip & use



SkinProtect comb for a skin-friendly trim



Choose from 3 beard combs & 1 stubble comb



USB charging



Charge once & use up to 4 weeks* (60 mins. run time/ 8 hours charge)

*Based on using 3 times a week, each time for 5 minutes

Beard Trimmers

BT1230/18



Skin-friendly rounded tip blades for smooth skin contact



Self-sharpening stainless steel blade



Easy to clean



Ergonomic design for a better grip & use



SkinProtect comb for a skin-friendly trim



DuraPower technology 4x longer battery life



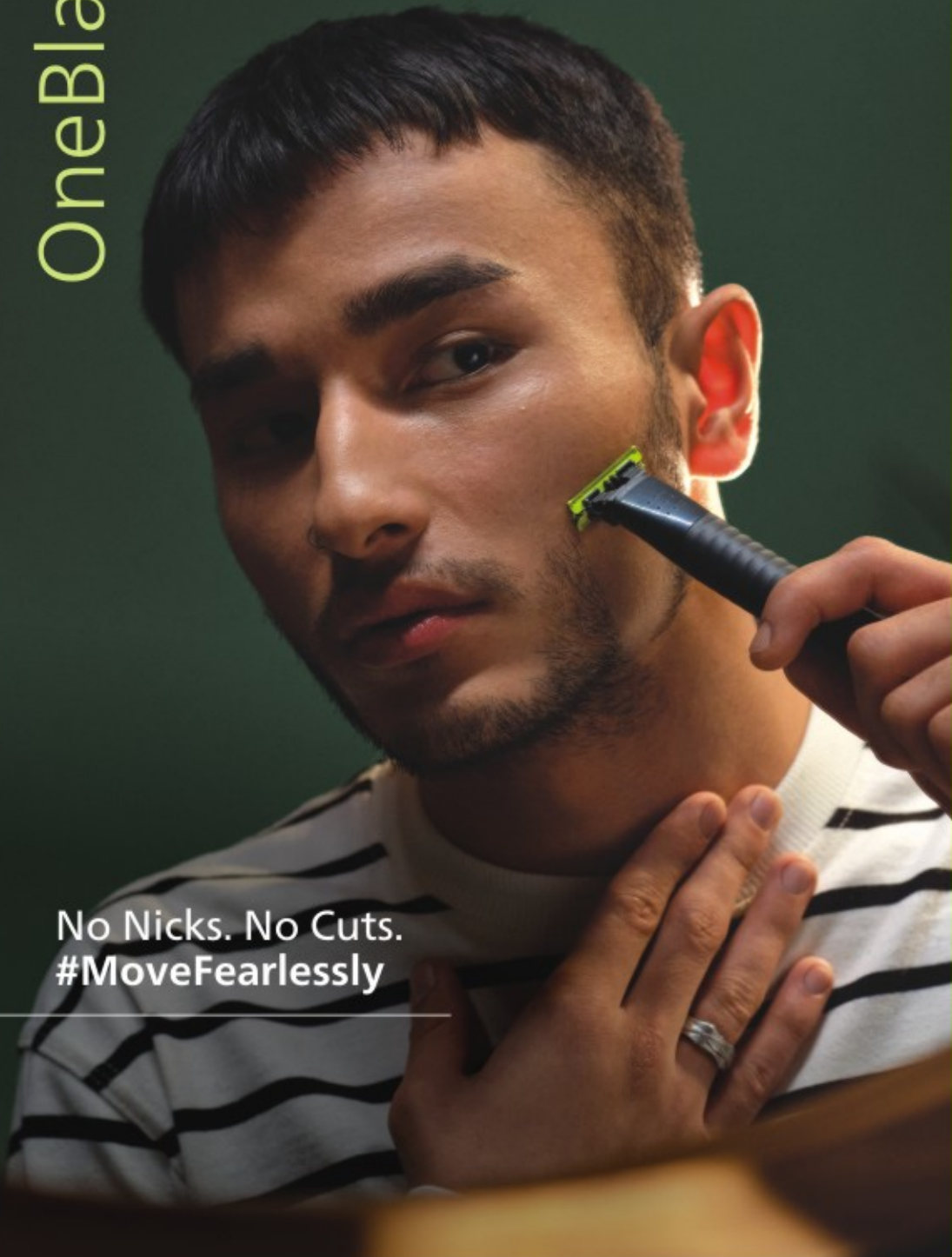
Battery indicator



Charge once & use up to 2 weeks* (30 mins. run time/ 8 hours charge)

*Based on using 3 times a week, each time for 5 minutes

OneBlade



No Nicks. No Cuts.
#MoveFearlessly

OneBlade

QP1424/10

2 year warranty



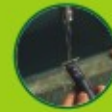
Dual Protection Technology for no nicks or cuts, as the blade never touches your skin



Shave, Trim & Style to get your desired look effortlessly



Dual-sided Blade so you can move in any direction and get precise edges



Wet or Dry, as no shaving foam is needed. Fully waterproof (IPX7), just rinse it to clean



Up to 3 weeks* of cordless use after charging 8 hours. USB-A charging at home or on the road



Blades last up to 4 months



*Based on using once a week, each time for 10mins

QP220/51



Double blade pack



Both blades combined last up to 8 months*



QP210/51



Single blade pack



Lasts up to 4 months*



*For best results. Based on 2 full shaves a week

Shavers

For a convenient dry or
a comfortable wet shave
with total skin protection

Shavers

S3122/55

3 year warranty*



90% less* nicks & cuts
vs. a regular blade



5D Pivot & Flex Heads



27 self-sharpening
blades



Integrated pop-up
trimmer for sideburns
& moustaches



Non slip rubber
grip handle



55 mins. of
cordless shaving



Both wet & dry use



*Standard 2 year international warranty + get additional 1 year warranty by registering on www.philips.co.in
+Vs a regular razor, only applicable on shaver 3000 series

shavers

S1223/45



ComfortCut Blades



3 direction floating heads for effortless shave



27 self-sharpening blades



Integrated pop-up trimmer for sideburns & moustaches



Non slip rubber grip handle



55 mins. of cordless shaving



Both wet & dry use



Wet & Dry

PHILIPS
AquaTouch

*Standard 2 year international warranty + get additional 1 year warranty by registering on www.philips.co.in

shavers

S1121/45



ComfortCut Blades



3 direction floating heads for effortless shave



27 self-sharpening blades



Non slip rubber grip handle



40 mins. of cordless shaving



Both wet & dry use



Wet & Dry

PHILIPS
AquaTouch

*Standard 2 year international warranty + get additional 1 year warranty by registering on www.philips.co.in

Body Groomers

Trims body hair,
protects skin even
in sensitive areas

Body Groomers

BG3005/15

3 year warranty*



Unique skin protector guards skin from blades



Bi-directional trimmer cuts longer hair in both directions



Skin friendly shaver foil for close shave



40 mins. run time/
8 hour charge



2 trimming length settings- 0.5mm & 3mm (with comb)



Ergonomic grip for maximum control



Fully water resistant- easily use under the shower



*Standard 2 year international warranty + get additional 1 year warranty by registering on www.philips.co.in

Body Groomers

BG1025/15

3 year warranty*



Unique skin protector guards skin from blades



Bi-directional trimmer cuts longer hair in both directions



Fully water resistant-easily use under the shower



Ergonomic rubber grip for maximum control



2 length settings- 0.5mm & 3mm (with comb)



Blue shower cord for convenient usage in shower



Lasts upto 2 months* on a single AA cell (2 nos. comes along with the pack)



Nose, Ear & Eyebrow Trimmer

Safely removes unwanted hair



Nose, Ear & Eyebrow Trimmer

NT3650/16

2 year warranty



Easily trim nose, eyebrow & ear hair with total comfort



Textured handle for superior grip



Protective skin guard



Fully washable



Fast moving dual side cutter for effortless trim



AA battery included in the box

Get wow salon-like hair
that feels like silk



Why Philips Straighteners are the best choice for you!



ThermoProtect technology

ThermoProtect technology distributes heat evenly across the plates, preventing overheating to protect your hair.



Kerashine and Argan plates

Keratin / Argan oil infused ceramic plates glide smoothly through your hair, for quick and easy styling & shinier hair.



Multiple Temperature Settings

Lower temperatures for last minute touch ups and styling, and for lighter hair. Higher temperatures for dense and curly hair.



SilkProtect technology

Enjoy style and care with the Philips SilkProtect technology providing silky smooth plates and less heat exposure.



Ionic Care

Charged negative ions eliminate static, condition the hair and smooth down the hair cuticles to intensify the hair's shine and glossiness. The result is smooth, frizz-free hair with vibrant shine.



Titanium infusion

Ceramic plates infused with titanium allow for fast heat transfer and smooth gliding through the hair, ensuring beautiful styling performance.

Hair Straighteners

BHS732/10



Mineral ions help lower UV damage



Thermoshield technology maintains consistent heat from roots to end to give ultimately even styling with less heat damage



35% smoother plates with floating technology for gentle gliding



Ionic Care which give you smooth, frizz-free hair with vibrant shine



50% faster straightening



Argan-oil infused plates to make styling fast and effortless



12 temp settings from 120-230° Celcius



The longer 105 mm plates enable better contact with the hair



Innovative temp display and 360 temperature dial



Auto shut-off in 30 min. for safe usage



Fast heat-up time, ready to use in 30 sec



Universal voltage for worldwide use

Hair Straighteners

BHS520/00



Thermoshield technology maintains consistent heat from roots to end to give ultimately even styling with less heat damage



The advanced ceramic floating plates move to adjust the pressure on the hair



2x Ionic Care gives you smooth, frizz-free hair with vibrant shine



Argan-oil infused plates to make styling fast and effortless



50% faster straightening



Innovative temperature display and 360 temperature dial



12 temp settings from 120-230° Celcius



The longer 105 mm plates enable better contact with the hair



Fast heat-up time, ready to use in 30 sec



Auto shut-off in 30 min. for safe usage



Universal voltage for worldwide use

Hair Straighteners

BHS378/10



ThermoProtect technology for even heat distribution



Keratin-infused ceramic plates glide smoothly through your hair & give a lustrous shine



Ionic Care which give you smooth, frizz-free hair with vibrant shine



100mm long plates for fast and easy straightening



6 LED temperature settings from 160°C to 230°C



The styler has an automatic shut-off function for safe usage. It automatically switches off after 60 minutes



Fast heat-up time, ready to use in 30 sec



Universal voltage for worldwide use

Hair Straighteners

BHS736/00



SilkProtect technology providing silky smooth plates and less heat exposure



Keratin infused ceramic plates for fast heat transfer for beautiful styling performance



Ionic Care which give you smooth, frizz-free hair with vibrant shine



Fast heat-up time, ready to use in 60 sec



Extra wide straightening plates for thick or long hair



Professional temperature for great, long lasting styles



1.8 meter cord for maximum flexibility



Universal voltage for worldwide use



The plates can be locked together for safe and easy storage

Hair Straighteners

BHS336/00



SilkProtect technology providing silky smooth plates and less heat exposure



Kerashine Titanium plate for fast heat transfer for beautiful styling performance



Ionic Care which give you smooth, frizz-free hair with vibrant shine



Fast heat-up time, ready to use in 60 sec



Two temperature settings at 190°C and 210°C.



Professional temperature for great, long lasting styles



1.6 meter cord for maximum flexibility



Universal voltage for worldwide use

Hair Straighteners

BHS393/00



SilkProtect technology providing silky smooth plates and less heat exposure



Titanium infused ceramic plates for fast heat transfer and smooth gliding



Professional temperature for great, long lasting styles



Fast heat-up time, ready to use in 60 sec



Two temperature settings at 190°C and 210°C.



1.6 meter cord for maximum flexibility



Universal voltage for worldwide use

Hair Straighteners

HP8303/06



SilkProcare technology providing silky smooth plates and less heat exposure



Titanium infused ceramic plates for fast heat transfer and smooth gliding



Professional temperature for great, long lasting styles



Fast heat-up time, ready to use in 60 sec



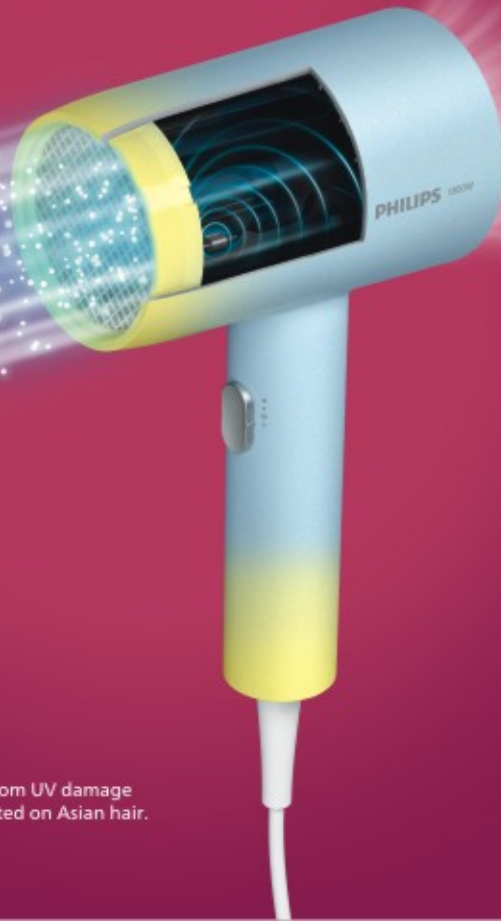
Universal voltage for worldwide use



Hair Dryers

Powerful drying with **dual ionic systems** for extra care

Mineral ions* help to lower UV damage, keeps hair smooth**



*Mineral ions contain zinc, which can protect from UV damage
**Mineral ions after 6 months UV exposure, tested on Asian hair.

Hair Dryers

BHD399/00



1800W



Mineral Ionic care*



Powerful drying with 1800W



Caring temperature setting



3 heat & speed settings



1.6 m Cord length



Cool air setting provides a burst of cold air to finish and hold your style.

*Mineral ions contain zinc, which can protect from UV damage

Hair Dryers

BHD356/10



2100W



2100W for salon-style drying performance at home



ThermoProtect attachment is designed to make air 10 degrees cooler for more caring drying



Ionic Care which give you smooth, frizz-free hair with vibrant shine



Travel friendly foldable design



6 individual heat & speed settings to get the desired look



Cool air setting provides a burst of cold air to finish and hold your style



Slim nozzle attachment for precise salon-like styles

Hair Dryers

BHD308/30



1600W



1600W for powerful drying performance at home



ThermoProtect attachment is designed to make air 10 degrees cooler for more caring drying



Travel friendly foldable design



3 speed settings to get the desired look



Cool air setting provides a burst of cold air to finish and hold your style

Hair Dryers

BHC017/00



1200W



1200W gentle drying for beautiful results



Brush diffuser for easier hair management while drying



Travel friendly foldable design



3 speed settings to get the desired look



ThermoProtect Setting is designed to make air 10 degrees cooler for more caring drying



Concentrator focuses the airflow for a polished, shiny look



Cool air setting provides a burst of cold air to finish and hold your style

Hair Dryers

BHC010/10



1200W



1200W gentle drying for beautiful results



ThermoProtect Setting is designed to make air 10 degrees cooler for more caring drying



Travel friendly foldable design



3 speed settings to get the desired look



Cool air setting provides a burst of cold air to finish and hold your style



Concentrator focuses the airflow for a polished, shiny look

Hair Dryers

HP8143/00



1000W



1000W power for faster drying results



2 flexible speed settings for the perfect results



ThermoProtect Setting is designed to make air 10 degrees cooler for more caring drying



Narrow concentrator for focused air flow

Hair Dryers

HP8142/00



1000W



1000W power for faster drying results



2 flexible speed settings for the perfect results



Narrow concentrator for focused air flow

Hair Straightening Brushes

Beautiful bouncy, naturally straight hair in 5 min*



Hair Straightening Brushes

BHH885/10



ThermoProtect technology for even heat distribution



Argan oil infused bristles for smooth, shiny hair



Ionic Care which give you smooth, frizz-free hair with vibrant shine



Triple bristle design for easy detangling and to protect scalp from heat



3 temperature settings 150°C, 170°C, 200°C



60mm large paddle shaped brush to cover more hair in one go



Ready to use indicator light



Fast heat-up time



Suitable for colored hair*

*Tested on 109 women in India with different hair types and 96% of the women agree with the statement.
*Tested on permanently dyed brown Indian hair, no color fading after 8 styling sessions of 170°C

Hair Straightening Brushes

BHH730/00



ThermoProtect technology for even heat distribution



Triple bristle design for easy detangling and to protect scalp from heat



200°C temperature for effective styling



Keratin-infused ceramic coating glide smoothly through your hair to give a lustrous shine



60mm wide paddle shaped brush to cover more hair in one go



Stylers



All you need for bouncy curls

Stylers

BHH816/00

2 year warranty



80mm Crimper for defined textures



80mm straightener for sleek results



25mm curling barrel for tight to loose curls



Fast heat up time, ready to use in 60 sec



Professional high heat for perfect results



Protective ceramic coating, gentle on our hair



OneClick Technology for quick and easy attachment changing



Cool tip for easier and safer use

HP8643/56



Hair Dryer



Thermoprotect temperature for gentle drying



1000W power for gentle drying and beautiful results



Compact design for easy handling



Narrow concentrator for focused airflow

Hair Straightener



Fast heat-up time, ready to use in 60 seconds



Ceramic plates for smooth and easy gliding



210°C professional styling temperature

BHB862/00



16mm curling barrel for vivid bouncy curls



Ceramic coating for gentle styling



Ready to use indicator



200°C for salon like results



Fast heat up time, ready to use in 60 sec



Cool tip for easier and safer use



Swivel cord to prevent tangled wires



1.8 m Cord length



Universal voltage for worldwide use

Epilators and Shavers

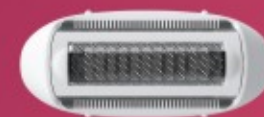


Use it, love it,
get hooked to it

Epilators and Shavers

BRE245/00

Corded Compact Epilator



Long lasting results
for root hair removal



Profiled, ergonomic
grip for comfortable
handling



Shaving head and
a comb for a
close shave



Washable
epilation head



2 speed settings
to grab thinner &
thicker hair



Corded

BRT383/15 Bikini Trimmer



Trimming head which trims down to 0.5mm



Mini precision shaving head for an even smoother look



2 click on trimming combs - 3mm & 5mm



Rounded trimming tips for no nicks & cuts



Washable trimming head for extra hygiene & easy cleaning



Portable & easy to carry - works on AA cell



HP6306/00 Wet & Dry Electric Shaver



Shaving head for painless hair removal



Hypoallergenic foil which prevents irritations & rashes



Wet & Dry use



Cordless, works on AA cell



Female Trimmers

Smooth skin
at all times

Female Trimmers

HP6388/00

2 year
warranty



Face & body on-the-go
touch up precision trimmer



1/3" trimming head for easy
removal of facial hairs



2mm & 4mm eyebrow comb



Small enough to take
every where



Work on a single
AAA battery



Cleaning brush
included



Female Trimmers

BRR454/00



Beautifully smooth skin



Built-in mirror



Full circle LED-light



Compact and portable



Gives results without pain



Skin-friendly touch up



The fast way to smooth skin



Self-sharpening blades



Wide head with curved openings



Breast Pump

More than 70% moms feel that breast feeding is a challenging experience today*



Away from baby/
breast feed in public



Engorgement
breast pain



Long feeding
sessions

*Source: Based on Nationwide online survey conducted by Momspresso with 510 mothers participation in India

Philips Avent Breast Pumps



Express anytime, anywhere

Working, traveling or in public

Reduce pain in Breast feeding

Natural suction

Stimulate milk production

With unique petal design

Tested For Assured Safety

0% BPA, BPS, sulphur and latex



#1 brand recommended by moms worldwide*



Electric Breast Pump



Manual Breast Pump



Microwave Sterilizer Bags



Sippers



Soothers

*Based on 2022 GemSeek survey conducted among more than 12,000 users of childcare brands and products

Breast Pump



Breast Pump

SCF323/11

Single Electric Breast Pump



Soft adaptive
petal silicone
cushion



Smart memory with
USB power connection



Dual mode:
Massage &
express



Light and
compact



4 expression &
4 stimulation settings



Very easy to
clean & setup

SCF430/01

Comfort Manual Breast Pump



One-size soft adapting silicone cushion



Helps you release milk fast



Express without leaning forward



Easy to clean and set up



SCF254/24

Disposable Breast Pads (24 units)



Fit comfortably



Soft and breathable keep skin dry



Anti-slip adhesive



Sterilize on-the-go!

Philips Avent Microwave Steam Sterilizer Bags



SCF297/05

Microwave Sterilizing Bags (Pack of 5)



Up to 100 uses per pack



Sterilizes in simply 90 seconds*



Kills 99.9% germs



Check box to keep track of the number of times each bag has been used



Safe handling zone



*At a microwave wattage of 1100 W

Moms feel that combining breast feed and bottle feed is not possible



Difficulty to latch on



Colic problem



Difficulty in grasping

Philips Avent Natural bottles are the most natural way to bottle-feed babies. Easy to combine with breast feeding.



Natural latch-on



Advanced anti-colic



Easy to grasp



0% BPA, BPS, sulphur and latex

Natural Feeding Bottles



SCF030/10
125ML/4 OZ



Twin pack
SCF030/20
125ML/4 OZ



SCF033/10
260ML/9 OZ



Twin pack
SCF033/20
260ML/9 OZ



SCF034/10
260ML/9 OZ



SCF035/10
260ML/9 OZ

Natural Teats (Set of 2)

SCF041/27, SCF042/27,
SCF043/27, SCF044/27



Flow rate	Age	Teat hole(s)	Texture
New born flow	0m+		Ultra soft with flexible spiral
Slow flow	1m+		
Medium flow	3m+		Bite resistance for older babies
Fast flow	6m+		
Variable flow	3m+		



Colic is when a healthy baby cries or fusses frequently for a prolonged period of time. 1 in every 5 baby faces colic issues today.



Colic issue

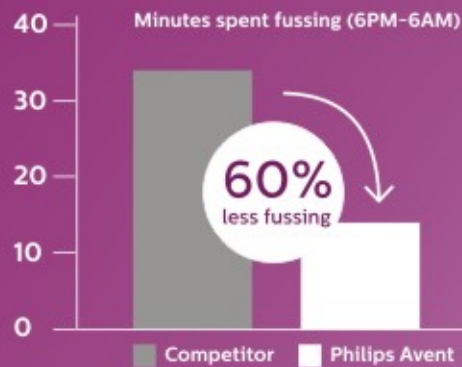


Gas & reflux issues



Baby biting the bottle nipple

Philips Avent anti-colic bottles are clinically proven to reduce colic and discomfort*



60% less fussing



Anti-colic valve



Ribbed texture



0% BPA, BPS, sulphur and latex



*At 2 weeks of age, babies fed with a Philips Avent bottle showed a trend to less colic compared to a conventional bottle and a significant reduction in fussing at night compared to babies fed with another leading bottle

Anti-colic feeding range



SCF810/10
125ML/4 OZ



Twin pack
SCF810/20
125ML/4 OZ



SCF813/10
260ML/9 OZ



Twin pack
SCF813/20
260ML/9 OZ

Introducing Anti-Colic with AirFree™ vent

Designed to reduce colic, gas and reflux

SCF 813/11



Proven Anti-colic



AirFree™ vent



Easy to clean



Use with / without vent



Anti-colic Teats

SCF631/27, SCF632/27,
SCF633/27, SCF634/27,
SCF635/27



Philips Avent sippers provide soft, easy and effortless drinking experience for babies & toddlers



Easy to grab



Leak proof*



Attractive designs

Straw Cups

SCF798/00

- Bendy Straw Cup
- 300ml/10 oz
- 12m+
- 1 pack – mixed colours
- Soft, bite resistant silicone straw
- No cover needed, FLIP LID to expose straw



SCF796/00

- Bendy Straw Cup
- 200ml/7 oz
- 9 m+
- 1 pack – mixed colours
- Soft, bite resistant silicone straw
- No cover needed, FLIP LID to expose straw



#82% of mums agree that this cup is leak proof (independent home placement tests UK, Sept 2013).

Easy Sip Spout Cups

SCF553/03

- 260ml/9 oz
- 9m+



SCF553/05

- 260ml/9 oz
- 9m+



SCF551/03 & 05

- 200ml/7 oz
- 6m+
- Soft silicone spout for tender gums



Ultra Air Soother

Soothe your baby with a soother that lets its skin breathe. The Philips Avent Ultra Air has extra-large holes to keep skin dry. Its lightweight shield is designed for maximum air flow.



Easy sterilisation and storage



98% teat acceptance*



Extra ventilation



Smooth teat



Healthy oral development



SCF085/12
0-6M Boy
Pineapple/Parrot



SCF085/13
0-6M Girl
Cherry/Bird



SCF085/17
6-18M Boy
Lion/Hippo



SCF085/18
6-18M Girl
Cat/Koala



Oral Health Care



Oral Health Care

HX6807/24 Sonic Electric Toothbrush



Sonic Technology

Our best **Sonicare Electric toothbrush** gives upto **7X times more plaque removal**



Complete Clean

With its densely packed central stain removal bristles, it is **clinically proven to whiten teeth in just one week**



Pressure Sensor

Pressure feedback: Vibrates handle to alert user



Gum Protection

100% Gum Health and **2 times whiter teeth in 2 weeks**



Battery Life

14-day long lasting battery life with **USB charging option**



HX3671/13

Sonic Electric Toothbrush



Sonic Technology

Patented Sonic technology which gives gentle and effective cleaning always



Pressure Sensor

Built-in pressure sensor automatically detects pressure and warns you and reduces the vibration



QuadPacer

Optimized brushing with SmarTimer and QuadPacer



Plaque Removal

Upto 3x better plaque removal vs a manual toothbrush



Battery Life

14-day long lasting battery life with USB charging option



HX3671/14

Sonic Electric Toothbrush



Sonic Technology

Patented Sonic technology which gives gentle and effective cleaning always



Pressure Sensor

Built-in pressure sensor automatically detects pressure and warns you and reduces the vibration



QuadPacer

Optimized brushing with SmarTimer and QuadPacer



Plaque Removal

Upto 3x better plaque removal vs a manual toothbrush



Battery Life

14-day long lasting battery life with USB charging option



HX3641/11

Sonic Electric Toothbrush



Sonic Technology

Provides superior clean with **unique sonicare technology**



Easy Start

Easy Start feature eases the transition from a manual toothbrush to electric toothbrush



QuadPacer

Optimized brushing with **SmarTimer** and **QuadPacer**



Plaque Removal

Upto **3x better plaque removal** vs a manual toothbrush



Battery Life

14-day long lasting battery life with USB charging option



HX9022/10

Optimal Plaque Defence Brush Head



Whiter teeth in just one week



Removes up to 7x more plaque



Maximized sonic motion



Click-on brush head system



Reminder bristles



Introducing a new range of **Philips electric toothbrushes**

Battery powered (AAA cell) Toothbrush for convenience



Microvibrations for deep cleaning



Soft countered bristles that gently polish and clean



90 days battery life



2 minute smart timer



HY1100/56



HY1100/51



HY1100/54

Replacement Brush Head



Microvibrations for deep cleaning



Soft countered bristles that gently polish and clean



90 days battery life



A color for every style



BH1022/00



BH1022/01



BH1022/04

