

KRANTI®

WATER METER

KBM-G

Features

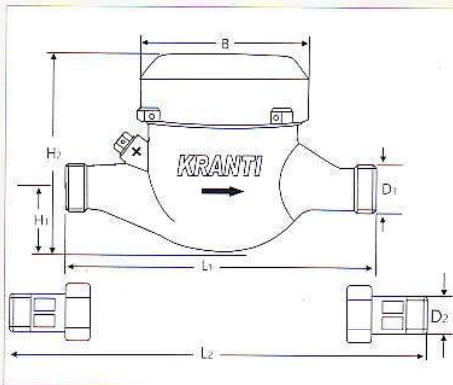
- Inferential Type Dry Dial, Multi Jet, Magnetic Transmission.
- Straight Reading Cyclometer Type register for the most comfortable reading position of 7 rollers & 2 pointers.
- Only one moving part - the impeller-in contact with the water for minimum wear & utmost reliability.
- All the materials in contact with water, consciously selected by the known resistance to corrosion.
- Wide Range of products 15mm to 50mm.



IS 779:1994



CLASS-B
CM/L-1298460



Working Conditions :

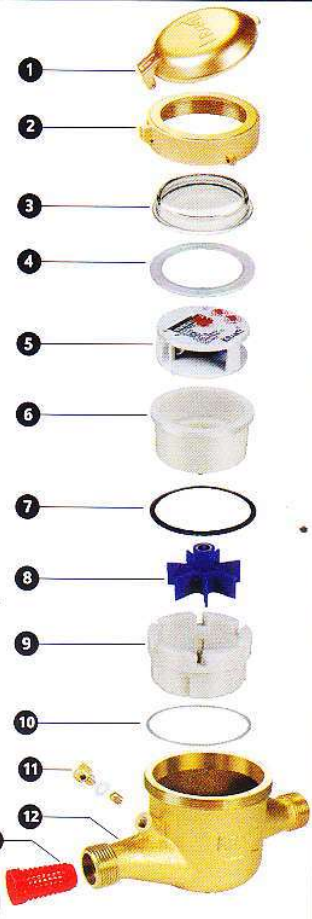
- ▶ Water Temperature $\leq 50^{\circ}\text{C}$
- ▶ Pressure Loss $\Delta P < 0.1\text{MPa}$ at Q_{max}
 $\Delta P < 0.025\text{MPa}$ at Q_n
- ▶ Maximum Pressure-16 Bar

Accuracy :

- ▶ From minimum flow rate (Q_{min}) inclusive, to transitional flow rate (Q_t), exclusive : $\pm 5\%$
- ▶ From transitional flow rate (Q_t) inclusive, to maximum flow rate (Q_{max}), exclusive : $\pm 2\%$

DIMENSIONS

Model		KBM-G	KBM-G	KBM-G	KBM-G	KBM-G
Nominal Size	(mm)	15	20	25	40	50
	(Inches)	1/2	3/4	1	1½	2
D1 - Meter Connection Thread ISO 228/1		G3/4 B	G1 B	G1¼ B	G2 B	G2½ B
D2- Meter Connection Pipe ISO 7/1		R½	R¾	R1	R1½	R2
L1 - Length without Couplings (mm)		165	190	260	300	330
L2 - Length with Couplings (mm)		250	290	380	430	470
B - Width (mm) (Max.)		100	130	170	210	270
H1 - Centerline Height (Max.)		50	60	65	75	115
H2 - Overall Height (Max.)		180	240	260	300	300



Multijet, Magnetic Drive Dry Dial WATER METER