



## Cornish Critters T-Shirt Size Guide

Please choose your size carefully based on the dimensions below, supplied to us by the shirt manufacturers. Once ordered and paid for, personalised t-shirts cannot be returned if they are the wrong size.

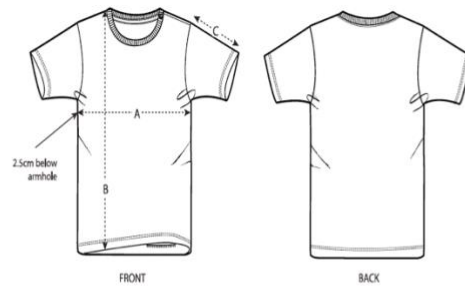
Our baby, toddler and children's shirts are 100% organic cotton, Fair Wear, PETA Vegan approved and 155 GSM.

Our adult shirts are 100% organic cotton, Fair Wear and PETA Vegan approved.

Our men's shirts are 180 GSM and our women's shirts are 155 GSM.

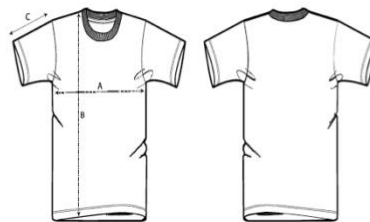


## Baby and toddler size guide



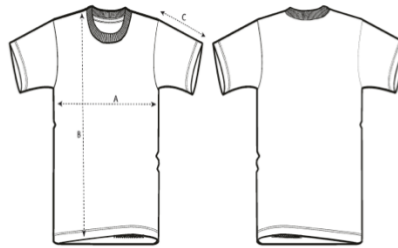
Sizes	0-6 m/56-68cm	6-12 m/68-80cm	12-18 m/80-86cm	18-24 m/86-92cm	24-36 m/92-98cm
A Half Chest	24.5	27	28.5	30	31.5
B Body Length	30	33	34.5	36.5	39
C Sleeve Length	9	9.5	10	10.5	11

## Children's size guide



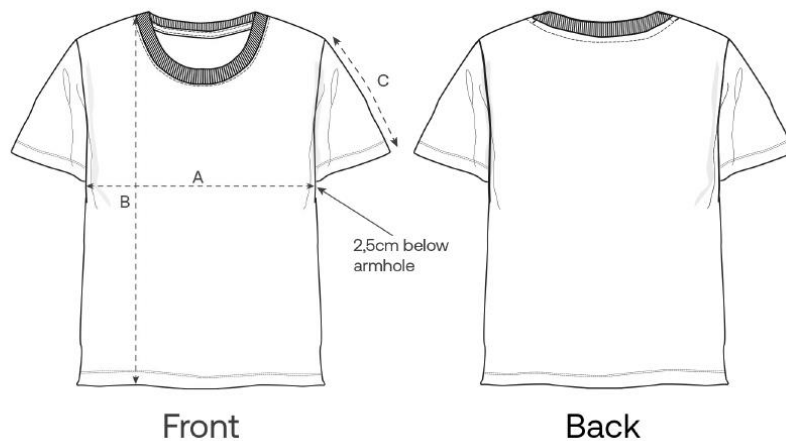
Sizes	3-4/98-104cm	5-6/110-116cm	7-8/122-128cm	9-11/134-146cm	12-13/152-158cm
A Half Chest	34	36	38	42	46
B Body Length	43	47	52	59	66
C Sleeve Length	12	13	15	17	19

## Men's size guide



Sizes	XXS	XS	S	M	L	XL	XXL	3XL	4XL	5XL
A Half Chest	45.5	47.5	49.5	53.5	56.5	59.5	63.5	67.5	72.5	77.5
B Body Length	62	65	69	73	75	77	79	81	83	84
C Sleeve Length	20	21	22.5	24	24.5	25	25.5	26	26	26

## Women's size guide



Measurement in cm	XS	S	M	L	XL	XXL	3XL
A - Half Chest	41.5	44.5	47.5	50.5	53.5	57.5	61.5
B - Body Length	59	62	64	66	68	70	72
C - Sleeve Length	17	17.5	18	18.5	19	20	20.5