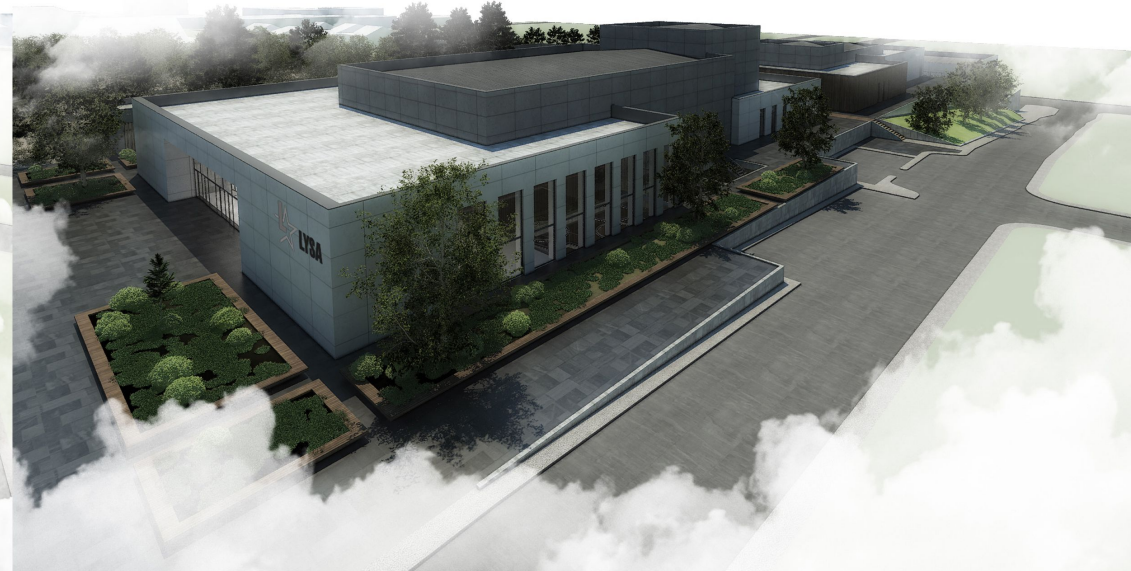
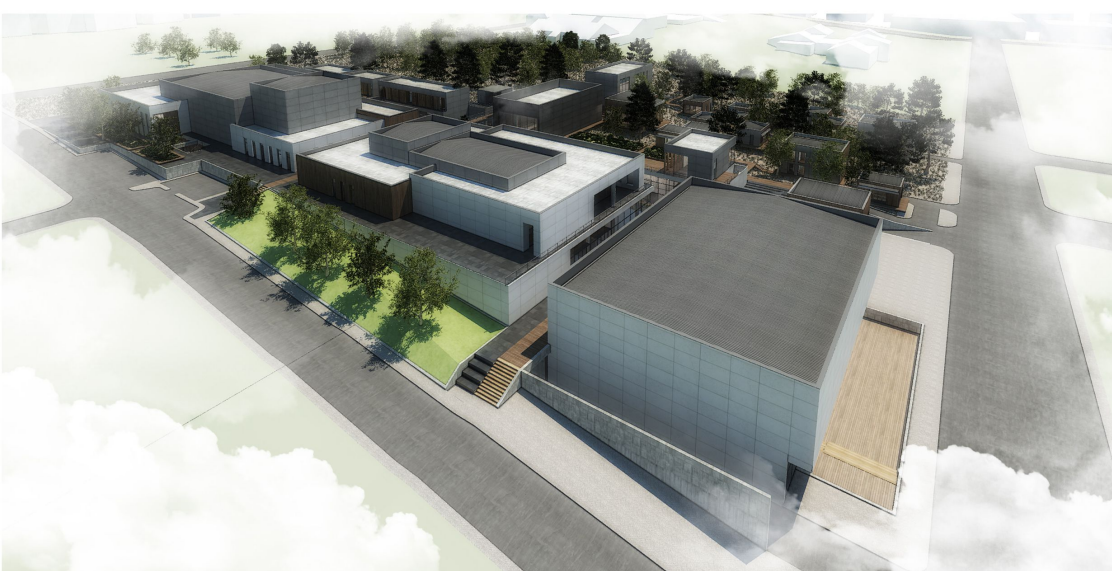


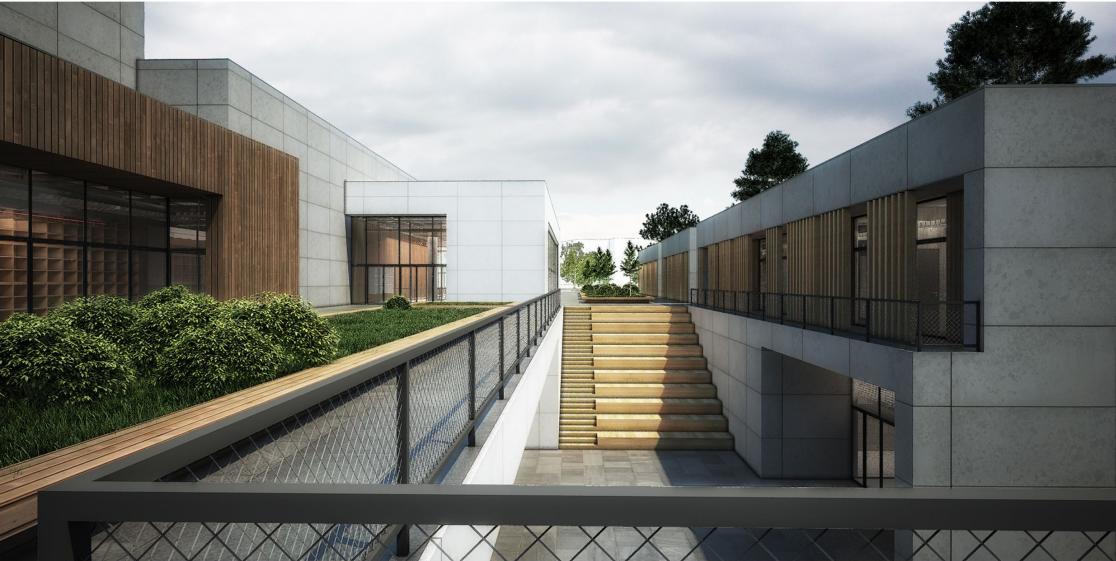
LÜLEBURGAZ YILDIZLARI ART ACADEMY



General View



Inner Courtyard



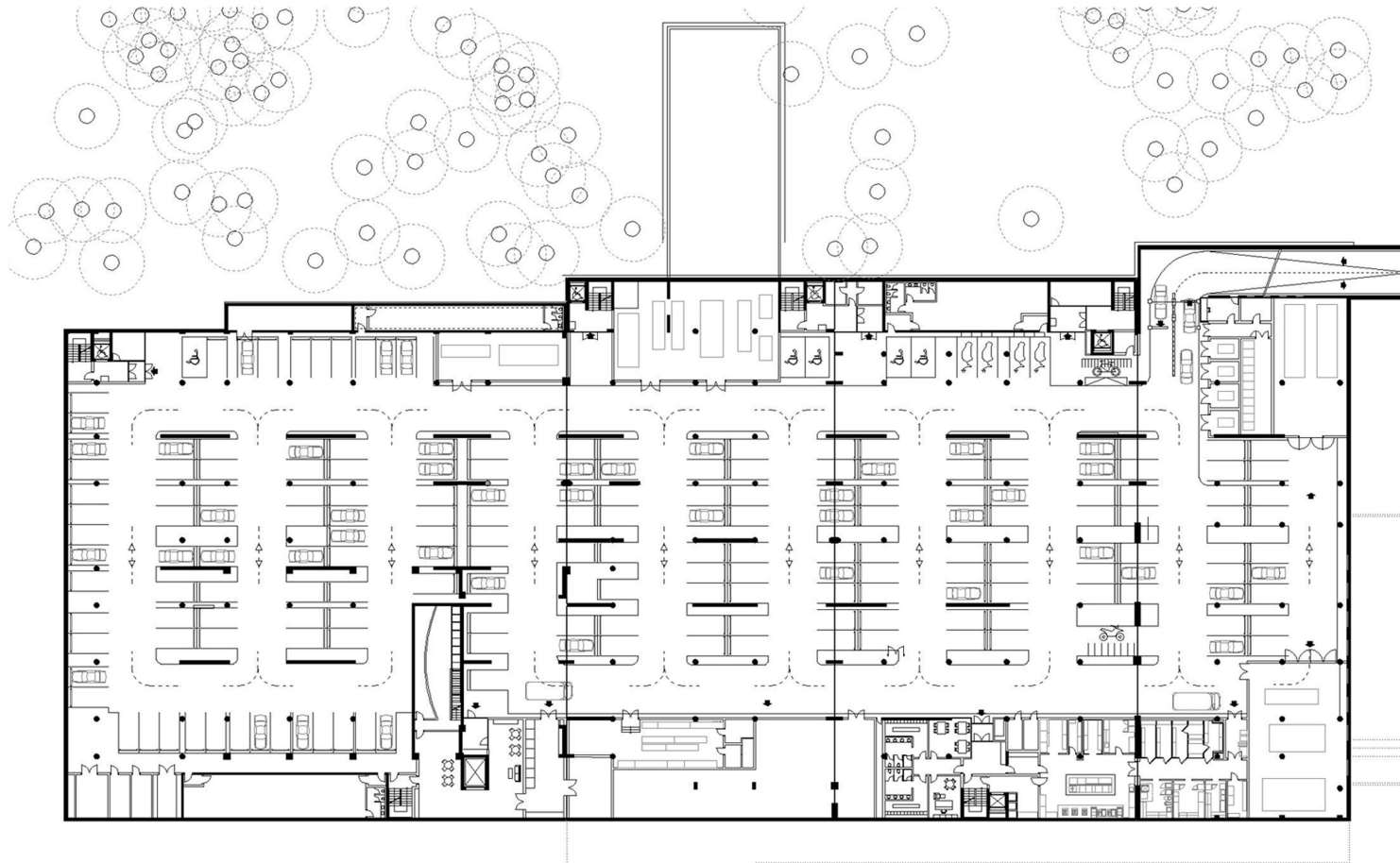
Inner Courtyard



Workshops



Basement Floor Plan (-5.12 LEVEL)



There is a total of 250 covered parking spaces, including 2 for electric vehicles and 6 for disabled access. On the same level, there is an approximately 350 m² fully equipped industrial kitchen with all necessary equipment and products procured. All auxiliary facilities, such as the staff changing rooms, showers, and restrooms, are located next to the kitchen.

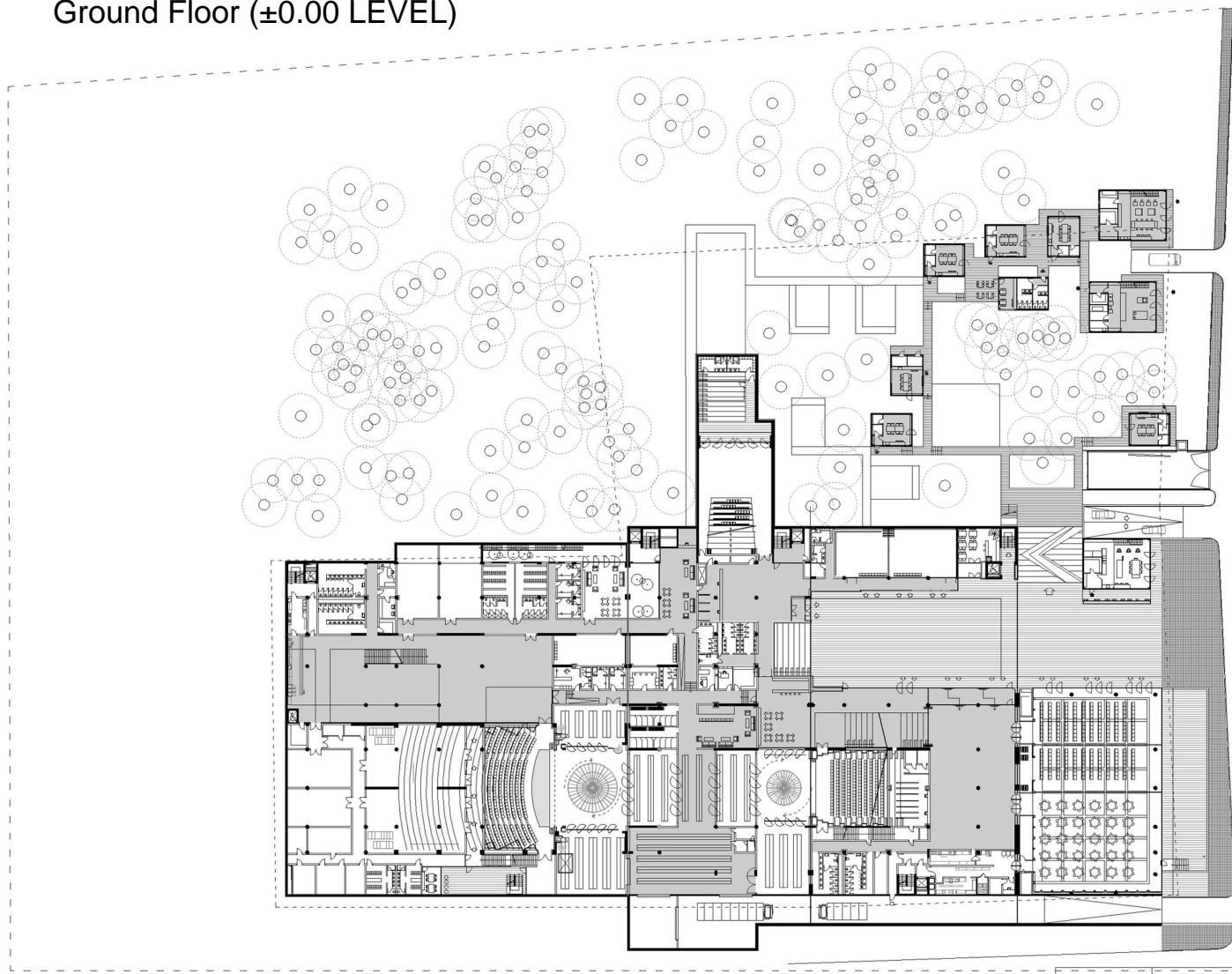
The orchestra pit, which starts from the upper level, descends to the orchestra waiting hall on this floor. This hall, along with the adjacent instrument storage room, can be serviced from the parking area.

Each of the four exits in the parking area is equipped with a payment point.

Two transformer and generator rooms, each with a capacity of 50 kVa, are located on this floor.

Additionally, three shops, each approximately 50 m² in size, are also on this level.

Ground Floor (±0.00 LEVEL)



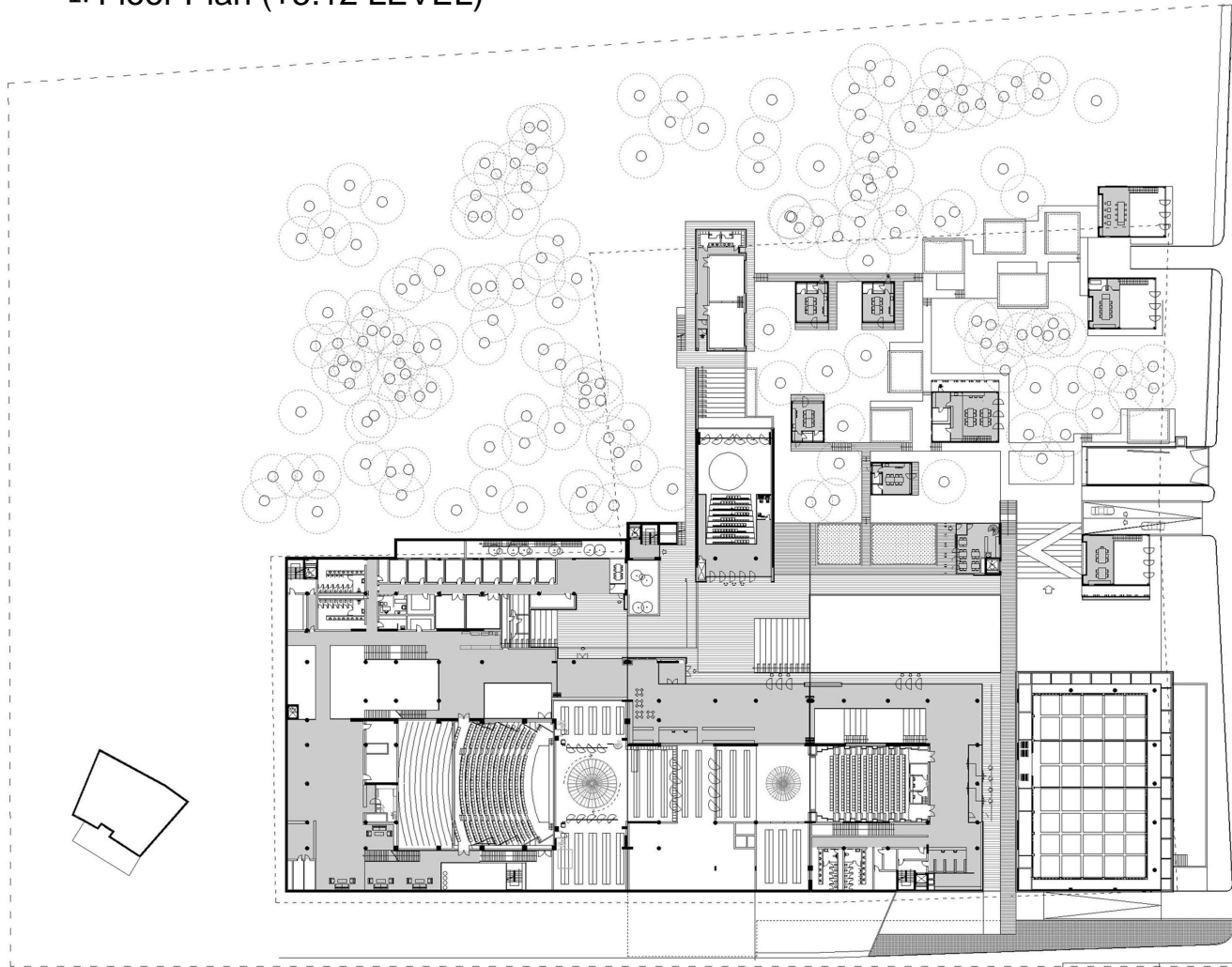
On this floor, there is a 1,000 m² Multi-Purpose Hall, along with a 450 m² foyer that serves it, sufficient wet areas, an approximately 60 m² industrial kitchen connected to the hall, and a 75 m² cloakroom area.

A Small Theatre Hall with a seating capacity of approximately 240 is also located on this floor. It features a revolving stage, a fly system, and fully equipped lighting and sound systems. Additionally, a 350 m² foyer serves both the Small Hall and the outdoor event area.

The stage and backstage service areas, covering approximately 2,400 m², are designed to support both the Large and Small Halls.

Furthermore, a 270 m² Experimental Hall and an Open-Air Cinema are also located on this floor.

1. Floor Plan (+5.12 LEVEL)



On this floor, there is a fully equipped Opera Hall with a seating capacity of 780, including an orchestra pit. Connected to this hall, there is a total of approximately 2,500 m² of foyer, exhibition, and event space.

Additionally, a music school spanning approximately 500 m², consisting of 12 individual instrument rooms, is also located on this floor. This level also includes sufficient wet areas and cloakroom facilities to meet essential needs.

Workshop

The complex houses a total of 15 workshops, including 4 large and 11 small ones, which are positioned as separate structures within the facility. The large workshops are strategically placed as separate but related buildings.

The entire area is equipped with all necessary units, including landscaping, lighting, open parking, artist parking, and a waiting area for live broadcast vehicles, ensuring the facility meets all operational requirements.

Interior

