



CHISWICK HOUSE  
& GARDENS TRUST

# KITCHEN GARDEN LONG TABLE TREE SCAVENGER HUNT

The beautiful Long Take in the Kitchen Garden has been created using the wood of 8 fallen trees found in the grounds of Chiswick House Gardens.

Can you find some of these trees still growing in the garden?



When you find the trees take moment to stand quietly by the tree, feel a sense of calm and connection with the natural world.

Observe the tree's details—its bark, leaves, and branches. Imagine what it looklike inside. Think about how long it has been here and what it has witnessed over the years. How does this tree make you feel? Take a rubbing of the bark or leaf or draw the tree of leaf on the back page.

### Cedar of Lebanon (*Cedrus libani*)



The Evergreen Giant - Cedar is a majestic tree has a pyramid-like shape and dark green needles. It's known for its long, fragrant wood. Cedar wood is prized for its resistance to decay and aromatic scent. It's often used in furniture and chests.



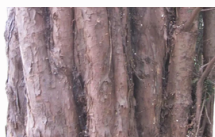
### English Oak (*Quercus robur*)



The King of the Wood - English Oak is a sturdy tree with broad, lobed leaves and acorns. Its strong, durable wood has been used for centuries. Oak wood is known for its strength and durability, often used in building and furniture making. It's one of the most iconic trees in Britain.



### Yew



The Resilient Survivor - Yew wood is dense, flexible, and was historically used for longbows. It has a rich, reddish color and is known for its durability. Search for a dense, evergreen shrub with dark green needles and reddish-brown bark. This ancient tree is slow-growing and can live for thousands of years.



### Ash Tree (*Fraxinus excelsior*)



The Graceful Dancer – The Ash tree is often found in woodlands and is known for its slender trunk and delicate leaves. The wood is light and strong and valued for its elasticity, often used for tool handles furniture and sports equipment.

### Holly Tree (*Ilex aquifolium*)



The Prickly Protector – Holly is an evergreen with has glossy, spiny leaves and red berries. Its hard, dense and fine-grained white wood, is used in inlay work, engraving, and small decorative items.

### Sycamore Tree (*Acer pseudoplatanus*)



The Maple-Leaved Mystery – This tree is often mistaken for a maple due to its similar-shaped leaves, but it's actually a member of the plane tree family.

Sycamore wood is pale and fine-grained, often used in furniture, musical instruments, and kitchen utensils.

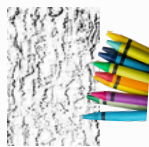
### Sweet Chestnut (*Castanea sativa*)



The Sweet Provider– The sweet chestnut tree produces spiny burrs containing edible nuts. Its wood is hard and durable resistant to decay. It is often used for flooring and furniture is often used in outdoor furniture, fencing, and building.



# KITCHEN GARDEN LONG TABLE TREE SCAVENGER HUNT



Take rubbing from the trees bark or a fallen leaf or draw what you see.