

KEYNSHAM WILDLIFE

2024

Compiled by John Aldridge



Four-spotted Orbweaver, Somerdale, 19th October 2024



**£2 for
Avon Wildlife
Trust**

INTRODUCTION

This is the thirty-eighth annual report on our local natural history and is aimed primarily at members of the Keynsham group of the Avon Wildlife Trust and other local naturalists. A customary word of caution has to be added to state that, although they are believed to be accurate, the following notes have not been subjected to independent scrutiny. The format has changed little over the years. The graphs that were first included in 2019 have been updated to include 2024. Some locations appear many times within the report including gardens; records from elsewhere in the area have the potential to widen the report so please look at what is around and record what you see. A particular feature of 2024 is the really interesting run of birds by Broadmead Lane. This is due to flooding at both the start and end of the year and the water not running off very quickly. It demonstrates how opportunistic birds can be and also that migration clearly takes place over our area. Nick Page has written a paper on the subject that has been published in the 2024 Avon Bird Report.

Some location names are a little different this year. Some observers call a section of the bank of the River Avon as Holm Mead; it is part of the area called the Swineford stretch of the River Avon by others or sometimes known as part of the Avon Valley Country Park.

A map of the area that this report is based upon can be found in Appendix D.

BIRDS

Appendices B1 to B3 are the continuation of winter bird surveys, the results of which were fed into a county survey. Appendix C1 shows information from a garden in Park Road and Appendix C2 information in or over a Balmoral Road garden. Appendix C3 shows information from a garden in Manor Road but not the adjacent woodland. Appendix C4 shows a graph created from data gleaned over a period of 29 years during a breeding birds survey organised by the British Trust for Ornithology (BTO). Results for 2024 are in Appendix A1; these plus previous years' totals have been accumulated into a single chart by simply totalling all birds seen on both spring counts. This one kilometre square consists of two walks one of which is along roads and the other mainly through the Memorial Park. The surveys have been undertaken by the same person over the same route each year so provide a stable base. The graph shows a clear decline over this period but no attempt has yet been made to examine the data by species except for House Sparrow.

Water birds

Little Grebe

One along the Swineford stretch of the River Avon on 18th January in the first winter period. One in the Memorial Park on 4th December and another along the Swineford stretch of the River Avon on 29th.

Cormorant

Mostly seen in the winter periods. Highest counts were six along the Swineford stretch of the River Avon on 8th January and four along the Hanham stretch on 6th March. Seven flew along the River Avon on 13th and 16th November (seen from Broadmead Lane). One in the Memorial Park on 12th February, 3rd March and on unspecified days in January and December. One in the Mill Grounds on 30th December, two over the town on 1st April and one on 7th December (flying very fast in Storm Darragh).

Grey Heron

Seen in every month except September on 62 days. Mostly ones or twos but three off Broadmead Lane on 21st April, 5th May and 19th May. Noted in the Memorial Park and adjacent parts of the River Chew on several occasions. Also seen over Hicks Gate, Stockwood Vale and over several town gardens.

Great White Egret

Found on four days. One over Balmoral Road on 15th February, then one around the Somerdale area on 4th and 5th October and one by the Swineford stretch of the River Avon on 2nd December.

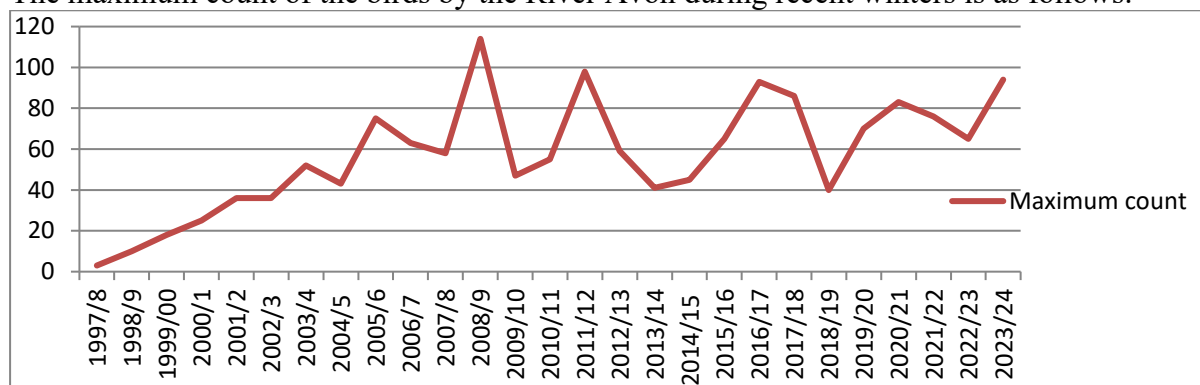
Little Egret

Just two sightings. Two around the Somerdale area on 31st March and one by Broadmead Lane on 5th May. The reason that they are scarce around Keynsham is unclear.

Canada Goose

Many records but strangely none between June and September. Nearly all were on or near the Swineford stretch of the River Avon. Numbers peaked in February when 92 were counted on 12th, and 94 on 21st/22nd. Interestingly, just six were noted on 27th. The only record at Somerdale was two on 24th April. Seven passed over the town on 24th March and five on 22nd December.

The maximum count of the birds by the River Avon during recent winters is as follows:



Greylag Goose

A single bird seen between Broadmead Lane and Holm Mead between 14th March and 24th May, then again between 10th and 14th December. Associated with the Canada Geese.

Mute Swan

Nested in the marina where a pair with one cygnet were seen on 4th June. The highest count was nine along the Swineford stretch of the River Avon on 7th January. There were five by Broadmead Lane on 12th April. Many reports of two or three birds during the year. One in the Memorial Park on 21st January was more unusual.

Shelduck

Three along the Swineford stretch of the River Avon on 7th January. Others were all on the floodwater by Broadmead Lane – two on 8th April, then one between 17th and 19th.

Mandarin Duck

Two near Boyd Bridge on 14th March, a male on Holm Mead on 31st March and another male by Broadmead Lane on 29th November.

Egyptian Goose

One enjoyed the wet conditions by Broadmead Lane between 6th and 12th May. A sound recording picked up the call of one on 11th August. Two appeared by Broadmead Lane on 29th November and were noted on several occasions up to 29th December.

Shoveler

A good set of records of this species that is scarce around our area. The highest count was

seven along the Swineford stretch of the River Avon on 12th February. Two males and a female visited the fields off Broadmead Lane between 13th and 15th March. Two males were seen there on 17th March and perhaps the same two birds were noted at Somerdale on 1st April. The following day, two pairs were seen by Broadmead Lane. In the second winter period there was one at Somerdale on 29th November and two along the Swineford stretch of the River Avon on the following day.

Gadwall

Five (three males, 2 females) by Holm Mead on 24th February and two on 30th March.

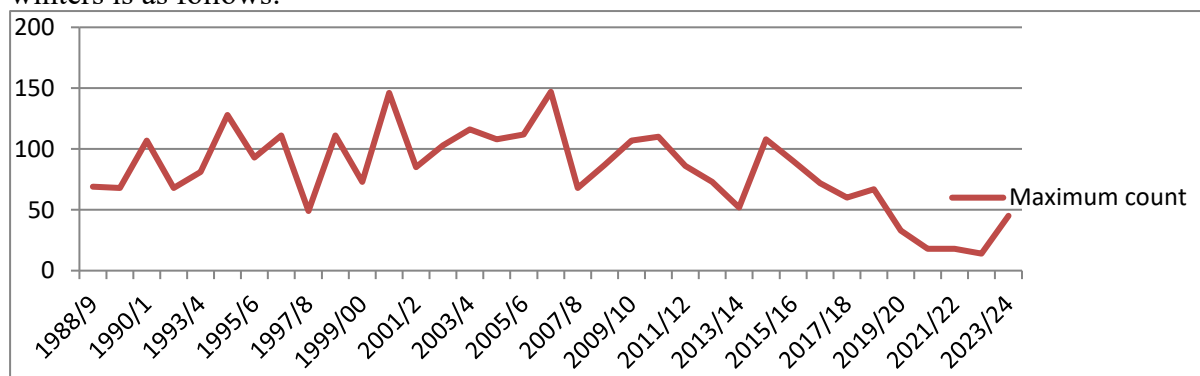
Wigeon

A pair along the Swineford stretch of the River Avon on 7th January, then again on 20th February. Five in the same area on 3rd March and four on 28th November. A sound recording over the town was made on 5th March.

Mallard

Present all year in the Memorial Park, the maximum being 50 on 31st August. Floodwater on the fields by Broadmead Lane saw an unusual influx; 80 (possibly more) were counted on 19th October, 90 on 21st, then 100 between 24th and 29th November. Some of these birds were also noted on the river. A wet flash near Charlton Fields accommodated up to 16 birds between 19th April and 25th May. Just a single bird was noted on the pond at Queen Charlton on 13th March. The Mill Grounds produced a maximum of 15 on 14th November. A garden in Stockwood Vale was often visited for food that was provided. Four over or in Balmoral Road on 31st March. A female with three small young were on the pool behind the Brassmill on 3rd June. There were at least six broods by Broadmead Lane. The earliest (six) were on 12th April; 38 ducklings were counted on 21st May.

The following graph shows the maximum count of birds on the River Avon during recent winters is as follows:



Pintail

An elegant duck, found on four dates. Two along the Swineford stretch of the River Avon on 30th March. Later in the year a female was found off Broadmead Lane from 19th to 21st October.

Teal

One roosted on the pool that formed near Charlton Fields on 26th January. Along the Swineford stretch of the River Avon, one was seen on 11th November, five on 28th November and one on 10th December.

Tufted Duck

A male on the flooded rugby pitch on 7th January. Then two diving in floodwater over the fields at Holm Mead. A pair or perhaps two pairs by Broadmead Lane and Holm Mead on 30th March, then five (four males and a female) by Broadmead Lane on 22nd April.

Goosander

Found on five days this year, a slightly improved position from recent years. One or two along the Swineford stretch of the River Avon on 14th and 28th January, two on the Hanham stretch on 20th January and 12th February, and one near Broadmead Lane on 24th March.

Birds of Prey

Sparrowhawk

There were 48 reports (38 in 2023) spread across the year. They were all single birds. Stockwood Vale produced the most sightings. One took a Feral Pigeon and another a Starling whilst others were chasing something or being chased. One seen perched on a TV aerial was a little different.

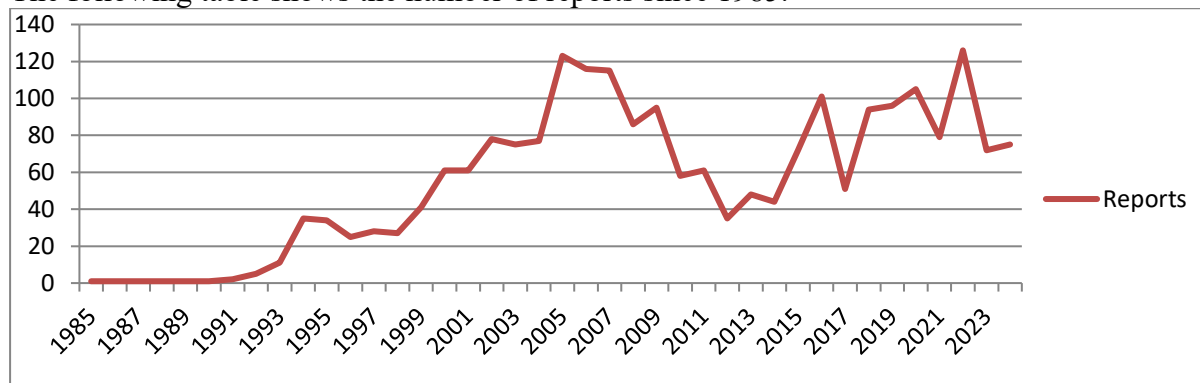
Red Kite

Seen on 27 occasions compared to 19 in 2023 and 20 in 2022. Only August and December failed to provide sightings. All were of single birds except for three over Keynsham Road on 16th June. Others were seen over Charlton Fields, Hicks Gate, Park Road, Somerdale, Stockwood Vale, West View Road, Hygge Park, Broadmead Lane, Manor Road, Balmoral Road, Martock Road, Parkhouse Lane, Courtenay Road, Holm Mead and Londonderry Farm. One passed over the Memorial Park whilst the Music Festival was in full swing on 7th July.

Buzzard

Seventy-five reports this year spread over a wide area. The highest count was seven over Keynsham Road on 16th June followed by five over Balmoral Road on 13th September, four over Park Road on 17th March and over Somerdale on 4th October, and three over the Meadows in April. A noticeable pale bird was noted over Broadmead Lane.

The following table shows the number of reports since 1985.

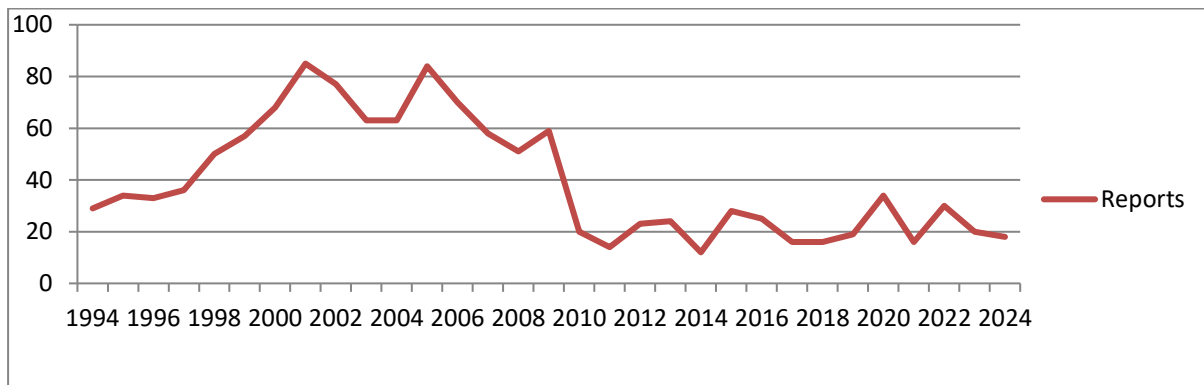


Kestrel

A pair frequented the area around Durley Lane in January and February, and again on 11th March. However, there was just one other sighting on 8th June at this location. Away from here, four were seen on 16th July which is indicative of breeding somewhere in that area. Also noted at Somerdale, Broadmead Lane, Keynsham Road, Stockwood Vale and south of Queen Charlton.

Twenty records this year is not a very good number. Perhaps more time spent at Charlton Fields and Queen Charlton would produce a higher figure. Somerdale produced three of the reports and Stockwood Vale six. Others were along the Wellsway, Manor Road, Durley Hill, Redlynch Lane and the top of Charlton Road.

The table below shows the number of reports since 1994.



Merlin

Three reports this year, all around Broadmead Lane. These were on 9th and 10th January, and 16th November.

Peregrine

A huge number of reports, 37 in total. It seems likely that they were breeding, perhaps in the Hicks Gate area. Away from here, reports were more typical - over the Memorial Park, Somerdale (one with a blue darvic ring on 6th December), Broadmead Lane and along the Swineford stretch of the River Avon and over the town.

Partridges and Pheasants

Red-legged Partridge

A single bird seen by Broadmead Lane on 29th April and 5th May.

Pheasant

Noted very regularly in Stockwood Vale (tiny chicks on 7th May) and around Manor Road. Occasionally elsewhere in the countryside. No significant counts this year.

Golden Pheasant

A young male appeared in Stockwood Vale in January and looked magnificent by July. On 8th May it tried hard with a female Pheasant and chased a male Pheasant around a garden on 12th September. The source of this bird is unclear but very nice to see.

Rails

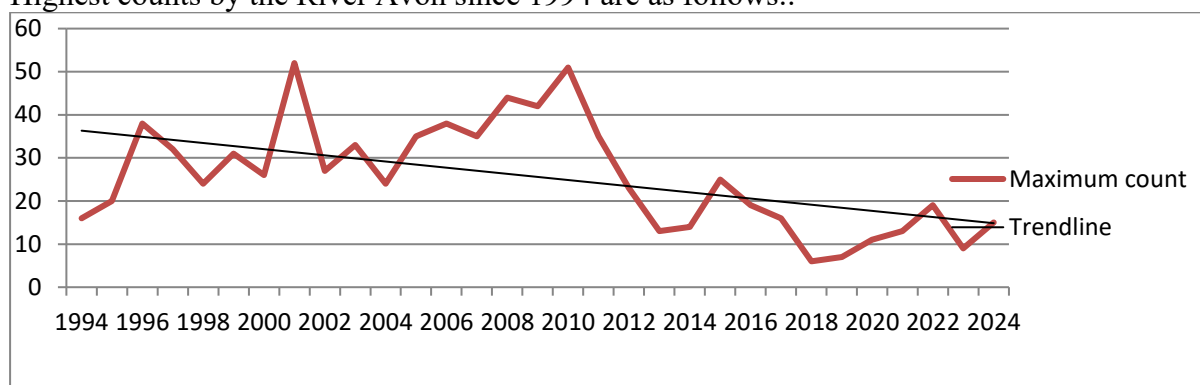
Water Rail

The Memorial Park has become a regular spot in several years allowing many people to see this usually shy bird. Could the same bird be returning? In 2024, seen regularly between 14th January and 21st March, then again from 29th November to the end of the year.

Moorhen

The highest count along the Swineford stretch of the River Avon increased to 15 on 11th November but normally numbers were somewhat lower. The Memorial Park hosted birds throughout the year (maximum seven) and it known that two young were produced. Also noted on the Queen Charlton pond, Broadmead Lane (maximum five), the Mill Grounds, a muddy field at Charlton Fields and the Brassmill pond.

Highest counts by the River Avon since 1994 are as follows:.



Coot

One by Boyd Bridge on 1st January and two at Avon Valley Park on 30th March. One on floods by Broadmead Lane on 14th April.

Wading birds

Oystercatcher

Sound recordings from Park Road picked up calls on 29th July and 2nd August.

Lapwing

Just two reports. Four birds at Queen Charlton on 18th January and one by Broadmead Lane on 13th November.

Ringed Plover

One by Broadmead Lane on 29th April then again on 30th, and three on 3rd May. Three at Charlton Fields on 6th May

Little Ringed Plover

A new bird for Keynsham. Several reports, all from the Broadmead Lane area. Two on 15th April one on 16th, one on 21st, then one on 19th May.

Dunlin

Three reports which is unusual, all of singletons. One at Somerdale on 26th February, another by Broadmead Lane on 3rd May and one at Charlton Fields on 6th May.

Woodcock

One at the sewage works on 27th January.

Snipe

After a blank year in 2023, this year turned out to be a good one. One around the floods at Charlton Fields on 26th January and two near Queen Charlton on 23rd February. Seven along the Swineford stretch of the River Avon on 18th January and two on 15th February. None at Broadmead Lane early in the year but found on several occasions from 19th October. This included seven on 30th October, 14 on 24th November and nine on 30th.

Common Sandpiper

An excellent run of reports from Broadmead Lane in April. Five on 14th and 15th, six on 16th, four on 17th, one on 18th, two on 26th and 28th. One at Somerdale on 27th April. A pool at Charlton Fields held two on 16th April and one the following day.

Green Sandpiper

A very scarce bird in our area. One on the muddy pool at Charlton Fields on 24th April.

Redshank

One at Somerdale on 1st April. Another was identified from a sound recording over Park Road on 2nd September.

Gulls

Black-headed Gull

Large numbers seen on several occasions in the winter periods. 1200 on fields along the Swineford stretch of the River Avon on 7th January, 540 on 15th February and 850 on 25th February. Lower numbers there in the second winter period – 300 on 28th November was the maximum. Significant counts on the fields near Broadmead Lane were probably the same ones by the River Avon as they can be seen from the other side of the river. 500 on floodwater at Somerdale on 5th March and 200 on 29th November. The last spring report was on 19th May and the first returning one on 31st July. Wet fields around Queen Charlton and Charlton Fields hosted 60 on 22nd February and the flooded football pitches held 30 on the same day.

Little Gull

A first winter Little Gull, only the third in our area, was found by Broadmead Lane on 8th April.

Mediterranean Gull

One by Broadmead Lane on 17th/18th April and another (or perhaps the same bird) on the rugby club pitch on 20th. Two along the Swineford stretch of the River Avon on 8th March, then three at Somerdale on 31st March and 1st April.

Common Gull

Unsurprisingly flooded fields attracted this species in significant numbers as well as Black-headed Gulls. They peaked at 400 at Somerdale on 27th/28th February and along the Swineford stretch of the River Avon on 8th March. Later in the year there were 120 at Somerdale on 29th November and 130 along the Swineford stretch of the River Avon on 2nd December. 150 on flooded fields near Queen Charlton on 23rd February was unusual as were 100 on the football pitches. None seen between 8th March and 21st October.

Herring Gull

As with the other gulls, this species is attracted to floodwater but not in the same numbers. Thirty at Somerdale on 27th/28th February, 40 around Broadmead Lane on 30th April and 50 on 10th May. Also thirty along the Swineford stretch of the River Avon on 30th March.

Lesser Black-backed Gull

There were high counts of this species. Somerdale hosted 90 on 11th January, 60 on 31st March and 40 on 29th November. 80 were counted along the Swineford stretch of the River Avon on 30th March, 70 in the fields by Broadmead Lane on 10th May, 50 on flooded football pitches on 22nd March and 40 south of Queen Charlton on 13th April. 44 were counted during survey work around the town centre on 3rd June. One carrying an orange ring (B=Z) was seen by Broadmead Lane on 6th May.

Unidentified gulls

A mixture of 450 Black-headed and Common Gulls along the Swineford stretch of the River Avon on 12th February.

On 17th April 150 gulls were following the plough by Broadmead Lane, mainly Lesser Black-backed Gulls but also a few Herring.

On 19th March, a gull that may have been a third winter Caspian Gull but unfortunately there was insufficient evidence for the County Recorder.

Either a Yellow-legged Gull or a Herring/Lesser Black-backed Gull in the Broadmead Lane

area on 24th January.

Pigeons

Feral Pigeon

During winter survey work 53 were counted in the one-kilometre square around central Keynsham on 31st January and 51 on 3rd December. In the equivalent breeding survey, there were 29 on 23rd April. Numbers build up in some gardens – in Manor Road there were 46 on 24th March and 68 on 19th December.

Stock Dove

Up to 16 throughout the year in Stockwood Vale. There was a good count of 40 north of Queen Charlton on 25th April. Smaller numbers around Broadmead Lane, Charlton Fields, Durley Lane and along the Swineford stretch of the River Avon.

Woodpigeon

Our commonest species. Forty-seven in central Keynsham during survey work on 31st January, and 30 on 3rd June. Fifty along the Swineford stretch of the River Avon on 15th February and 65 on New Year's Eve. Many other reports but no significant counts.

Collared Dove

A widespread species but rarely in significant numbers. Noted in most surveys. Counts of 14 in central Keynsham on 30th January and, 10 on 23rd April. Eleven on Holm Mead on 29th December.

Owls

Barn Owl

One over Charlton Fields on 27th November and one heard from Manor Road in October and November.

Little Owl

One heard calling from the cycle track on 24th February.

Tawny Owl

Frequently encountered in Stockwood Vale and Manor Road throughout the year. Also heard between January and May, then August to October around Broadmead Lane, Park Road, Charlton Fields, Chandag Road, north of Queen Charlton, Courtenay Road and the Memorial Park.

Kingfishers

Kingfisher

Everybody's favourite and often reported. Many sightings between the Memorial Park and the Lock Keeper, mostly singles but two on 11th February. There were a few reports along the River Avon in both directions, Broadmead Lane and Durley Hill.

Woodpeckers

Great Spotted Woodpecker

Well represented in the area with 60 reports. Drumming heard between 10th January and 30th March in Manor Road Community Woodland, Cleeve Wood, the Memorial Park, Stockwood Vale and along the Swineford stretch of the River Avon. Three found at Somerdale on 1st January and in Stockwood Vale (two males and a female) on 29th May. Two noted at Boyd Bridge, the Memorial Park, Elm Park House and along the Swineford stretch of the River Avon. The other reports were of single birds including five gardens. Nested at the cemetery.

Green Woodpecker

Many scattered reports. Seen or heard in gardens in Stockwood Vale, Manor Road, Martock Road, West View Road, Charlton Park, Derwent Grove and Handel Road. In the wider countryside, seen or heard around Broadmead Lane, Field Grove Farm, Somerdale, the Memorial Park, the Mill Grounds, both stretches of the River Avon, the Queen Charlton area, Durley Hill, Steel Mills and the cycle track.

Larks

Skylark

Song heard by Broadmead Lane in February, at Somerdale in March, along the Swineford stretch of the River Avon in February and Charlton Fields in April. One over Martock Road on 5th July was the nearest to the town. Most counts were of one to five birds, the exceptions being six by Broadmead Lane on 17th/18th February, seven in the same area on 16th November and 11 south of Queen Charlton on 13th April.

Swifts and hirundines

Swift

First seen around Broadmead Lane on 21st April and finally over Balmoral Road on 7th August. Quite a few reports in between but numbers were not up to what they were some years ago. Thirty over Albert Road on 13th July probably included fledglings that had just left the nest (about a week later than last year); these agile birds were probably the same as those seen over The Meadows, Park Road, West View Road and Balmoral Road. Seen over the Chandag estate on several occasions, the highest actual count being eight birds. Also noted over Queen Charlton and Charlton Fields.

The following table shows earliest dates since 2006:

2006	2007	2008	2009	2010	2011	2012	2013	2014	2015	2016	2017	2018	2019	2020	2021	2022	2023	2024
21/4	23/4	26/4	25/4	18/4	21/4	29/4	26/4	4/5	2/5	3/5	19/4	3/5	30/4	2/5	4/5	8/5	30/4	21/4

Sand Martin

More sightings this year, probably because the Broadmead Lane area was watched more often and the birds like to feed up over the nearby sewage works. First seen on 15th March, increasing to 24 on 23rd. Numbers increased to a very respectable 80 on 29th April. Last seen on 3rd May (60 birds). The only other location was Somerdale where two were seen on 31st March.

Swallow

As with Sand Martins, Broadmead Lane was the location where birds could feed up before moving on. 23rd March is quite an early date, and up to nine were present to the end of March. Numbers increased to 27 on 4th April and 35 on 14th, 15th and 22nd. There was then an outstanding count of 150 on 27th April. Reports then reverted to normal with very few reported. There were 15, mostly juveniles at Somerdale on 15th August and the last sighting was over Charlton Fields on 29th September.

House Martin

As with the other two hirundine species, Broadmead Lane and the sewage works were the hot spots. The first was on 29th March. Numbers increased to 35 on 10th April, then 50 on 15th and 55 on 26th. Numbers peaked at 100 (possibly 200) on 28th/29th before falling back, and then increasing again to at least 70 on 23rd May. There were at least six nests over Queens Road shops, and 20 birds were noted on 17th May. There were still young in one of the nests on 4th September. Also noted along both stretches of the River Avon, Somerdale, Charlton Fields, Stockwood Vale and over West View Road.

Pipits and Wagtails

Meadow Pipit

Many reports and a few interesting numbers. Twenty-seven along the Swineford stretch of the River Avon on 8th January and 50 on 25th February. Thirty around Broadmead Lane on 18th February and five at Charlton Fields on 28th April. The next report was a single bird on 6th October. The highest second winter count was 20 along the Swineford stretch of the River Avon on 28th November. Sound recordings made over Park Road on 14th and 20th March, and 6th April were probably made by migrating birds.

Tree Pipit

One called over Broadmead Lane on 23rd April and one photographed at Charlton Fields on 28th.

Yellow Wagtail

Found in two places. Broadmead Lane hosted one on 21st April. One to four were found around Charlton Fields between 24th and 30th April.

Grey Wagtail

One or two (three on 2nd March) noted many times in the Memorial Park in every month except July and September. Unsurprisingly, Broadmead Lane was visited regularly; Five there on 11th November were acting as a family group although this is rather late for them to stay together. A pair was seen at the Lock Keeper on 7th March but very few were noted by the River Avon. Also seen in Manor Road Community Woodland, Hicks Gate, Durley Road, Stockwood Vale and a Rhode Close garden.

Pied Wagtail

As with other species, Broadmead Lane and the adjoining sewage works was the place that many were attracted to. One hundred on 17th February was a high count but this was superseded to at least 150 three days later. The number dropped to 30 on 27th, the same day that 60 or more appeared at Somerdale. On 24th April 20 were at Charlton Fields – they were probably migrants moving through. A juvenile by Broadmead Lane on 24th May was being fed by adults so they obviously bred nearby. Well into the autumn, Broadmead Lane played its part again with 80 on 19th October and 40 on 16th November.

White Wagtail

A new species for our area. Unsurprisingly, this was in the Broadmead Lane area. The first was on 16th April, and again on 19th. Then again on 11th, 18th, 21st and 24th May. They were also attracted to Charlton Fields where one was sighted on 19th and 20th April, two on 21st, one on 27th, three on 29th and one on 4th May. Nearby there was one on 25th April.

Wrens, Dippers and Accentors

Wren

Winter bird surveys revealed three by the River Avon in the first winter period and three in the second. In central Keynsham there was one in the first winter period but none in the second. Breeding bird surveys produced ten in central Keynsham and ten near Field Grove Farm. There were 15 in the Memorial Park on 10th February. Also noted in many other places.

Dunnock

Winter bird surveys produced four by the River Avon in the first winter period and two in the second. In central Keynsham there were four in the first but none in the second. Breeding bird surveys revealed three in central Keynsham and four near Field Grove Farm. Ten around Broadmead Lane is an excellent count for a skulking bird, and counts of six and seven around Queen Charlton are also interesting.

Thrushes

Robin

Winter bird surveys produced ten by the River Avon in the first winter period and six in the second. In central Keynsham the figures were 12 and 13. Breeding bird surveys produced seven in central Keynsham and eight near Field Grove Farm. High counts included 16 in Manor Road Community Woodland on 12th February and 12 at Somerdale on 2nd March. A particularly tame one visited a Handel Road garden from 16th November when it regularly came to dried mealworms within a few inches of the house owner.

Black Redstart

Two reports this year. One at Somerdale on 29th March, and a particularly interesting one because of the breeding season date in Hygge Park on 23rd June.

Redstart

A female by Broadmead Lane on 14th April.

Wheatear

A few years ago many were found in our area but this has not been so for a number of years. One on Holm Mead on 8th March, others at Queen Charlton and Charlton Fields on 18th April and one at Charlton Fields on 28th and 29th.

Stonechat

A nice series of records. One at Somerdale on 7th January. Broadmead Lane produced one on 25th and 26th February, and two on 30th November. Somerdale also hosted one on 22nd January, and 23rd and 27th December. There were two along the Swineford stretch of the River Avon on 8th January, one on 13th October, three on 16th November, then one or two on 30th November, and 6th, 19th and 29th December.

Song Thrush

Not recorded many times this year but still widespread. Surveys only produced single birds. Highest counts were three around the Somerdale area on 5th January, four in Manor Road Community Woodland on 12th February, three north of Queen Charlton on 25th April and Elm Park House on 11th May.

Mistle Thrush

Reported throughout the year, mostly as singletons. Five in the Memorial Park on 31st August suggests local breeding. Others were noted near the sewage works, Somerdale, Meadow Wood, the Swineford stretch of the River Avon, Stockwood Vale, Chandag Road, north of Queen Charlton, Elm Park House, Martock Road and Chewton Keynsham. One heard singing within the town on 16th April.

Redwing

The first winter period produced a few good numbers. Sixty along the Swineford stretch of the River Avon on 8th January, 46 on 15th February and 50 on 25th February, 49 around Somerdale and the surrounding area on 20th January, 50 in Meadow Wood on 30th January, and 20 around Broadmead Lane on 23rd February. Last seen on 23rd March. In autumn birds were heard over Park Road on 10th October and over Manor Road on 18th. Then 20 around Broadmead Lane on 19th October. Thirty-eight along the Swineford stretch of the River Avon on both 28th November and 10th December were decent counts. Only a handful of garden records.

Blackbird

Winter bird surveys produced two by the River Avon in the first winter period and six in the second. In central Keynsham the figures were six in the first period and five in the second.

Breeding bird surveys produced seven in central Keynsham and five near Field Grove Farm. Nine on 13th April and 25th May south of Queen Charlton and ten in the Memorial Park on 28th May. Many other reports.

Fieldfare

A few decent counts. Sixty around the marina on 17th January, 100 around Holm Mead on 25th February, 60 around Broadmead Lane on 23rd/25th February and 70 there on 29th. The last seven winter birds were at Queen Charlton on 13th March. Next seen on 8th October when 12 passed over the town. No significant numbers in the second winter period, the maximum being 17 along the Swineford stretch of the River Avon on 11th December. Eight fed on fallen apples in Stockwood Vale on 14th November.

Warblers

Cetti's Warbler

Four reports is a good number. One around Broadmead Lane on 26th March and 20th October. Also north of Queen Charlton on 25th April and 27th May.

Chiffchaff

A good sprinkling in the first winter period. Three around the sewage works/Broadmead Lane area from 1st January to 27th February, and six on 25th February. Also heard in Park Road on 5th February. Spring may have started on 3rd March when one was seen in the Memorial Park but this is a little early. Three silent birds in a Handel Road garden on 14th March suggests that this is when spring migration really got under way. March then produced reports from the Memorial Park, Broadmead Lane, Somerdale, Park Road, West View Road, the cycle track (ten on 30th), and Manor Road. There were then many reports up to the end of October. In November single birds were encountered around Broadmead Lane and Holm Mead. In December one was seen at Holm Mead on 6th December and another in a Manor Road garden on 19th. One on 16th March was thought to be a Siberian Chiffchaff but was not accepted by the county recorder.

Sedge Warbler

One by Broadmead Lane on 21st and 30th April, and 5th May.

Willow Warbler

The first singing bird appeared in a Manor Road garden on 21st March and again on 24th and 26th. Two were heard along the cycle path on 22nd March, then Broadmead Lane on 25th, 27th and 28th and again on 4th and 14th April. Somerdale produced one on 30th March and 8th April.

Blackcap

In the first winter period they were seen in Handel Road, Balmoral Road, West View Road, Priory Road, the sewage works and the Memorial Park. In March birds were found by the cycle track on 22nd which were probably the first arrivals. They then became widespread. A count of 12 north of Queen Charlton on 25th April was exceptional followed by seven along the Swineford stretch of the River Avon on 4th June. There was a gap between 21st August and 30th October when wintering birds started to arrive. They were then found in Stockwood Vale, Manor Road, Balmoral Road, Handel Road and in the Memorial Park.

Lesser Whitethroat

One near Broadmead Lane on 14th April, then north of Queen Charlton on 25th and Hygge Park on 28th. Seen here again on 10th and 19th May so may have been breeding or attempting to do so. One south of Queen Charlton on 25th May was the only other report.

Whitethroat

The first was singing along the railway embankment at Somerdale on 10th April. The next

was at Charlton Fields on 20th. This became the hotspot where up to five birds sang in the spring. Then found around Broadmead Lane, north of Queen Charlton and at Somerdale. Not seen after 5th July when one was noted in Martock Road.

'Crests'

Goldcrest

Plenty of reports but for no obvious reason, only one between 25th May and 28th October. Four in the Memorial Park on 4th December. Also noted along the cycle track, Broadmead Lane, around Queen Charlton, Park Road, Martock Road, Stockwood Vale, Holm Mead, Elm Park House, Handel Road, Somerdale, Priory Road and a dead one found outside The Crown.

Tits

Long-tailed Tit

Many reports but they rarely turn up in surveys. Highest counts were 20 in a Manor Road garden on 19th December, 18 in Balmoral Road, 12 in the Memorial Park, 10 in The Meadows and an unspecified number in Stockwood Vale.

Coal Tit

Seen in Stockwood Vale in ten months of the year. One or two by the River Avon, Somerdale, Fox and Hounds Lane, the Memorial Park, Holm Mead and gardens in Manor Road, Priory Road, Prospect Close, Handel Road and The Meadows.

Blue Tit

Winter bird surveys revealed eight by the River Avon in the first winter period and four in the second. In central Keynsham the figures were seven and two respectively. Breeding bird surveys revealed six in central Keynsham and only one near Field Grove Farm. There were 15 around Broadmead Lane on 17th February, 12 on feeders in Stockwood Vale in January, 11 in the Memorial Park on several occasions and 11 at Holm Mead on 29th December.

Great Tit

Winter bird surveys revealed ten by the River Avon in the first winter period and three in the second. A breeding bird survey revealed two in central Keynsham and six near Field Grove Farm. Ten were noted in the Memorial Park on 14th February and 28th March, eight in Holm Mead in February and six in Manor Road Community Woodland on 12th. There were many smaller counts.

Nuthatches and Treecreepers

Treecreeper

One or two at Somerdale, in the Memorial Park, north of Queen Charlton, near Keynsham lock and Holm Mead.

Nuthatch

One by the cycle track on 22nd March, one at Elm Park House on 12th May and one calling along the Hanham stretch of the River Avon on 12th June.

Crows

Magpie

Winter bird surveys revealed four by the River Avon in the first winter period and nine in the second. In central Keynsham the figures were nine and five respectively. Breeding bird surveys revealed three in central Keynsham and five near Field Grove Farm. Highest counts were 22 at Somerdale on 5th March, 21 at Holm Mead on 10th December, 21 in The Meadows in January, 15 along the cycle track on 22nd March and 18 by Broadmead Lane on 21st November. A yellowish bird appeared in Stockwood Vale on 28th June.

Ring-necked Parakeet

One in the Memorial Park on 20th December.

Jay

As in 2022 and 2023, found in Stockwood Vale in all months of the year. Three in the Memorial Park on 16th March and four around Holm Mead on 10th November. Also noted around Broadmead Lane, Somerdale, the cycle track, Durley Hill, the Ambulance station and a West View Road garden.

Jackdaw

Winter bird surveys revealed just four by the River Avon in the first winter period (compared to 233 in 2023) and 34 in the second. In central Keynsham the figures were 36 and 39 respectively. Breeding bird surveys revealed 38 in central Keynsham and 10 near Field Grove Farm. Winter periods usually produce the highest figures, often as birds fly to roost to the north of our area. There were 80 circling together on 8th January and over 70 on 23rd October. 250 around Chewton Keynsham on 14th November may have been a pre-roost gathering. Fifty around Broadmead Lane was another good count. Many other reports of smaller numbers.

Rook

The Manor Road Community Woodland rookery held nine nests. There was a significant rookery in the Memorial Park a few years ago but the birds moved a little further south. In 2024 they were back again with 16 nests. Sixty-four in Manor Road Community Woodland on 12th February was a large count and 50 by Broadmead Lane on 19th October wasn't far behind. Twenty-five in The Meadows in September is interesting. Also 19 around Park Road on 31st January and 18 around a Manor Road garden in March.

Carrion Crow

Winter bird surveys revealed 40 by the River Avon in the first winter period and 74 in the second. In central Keynsham the figures were eight and nine respectively. Breeding bird surveys revealed 13 in central Keynsham and eight near Field Grove Farm. There were several high counts. 132 on Holm Mead on 10th December and 121 on 29th. Sixty-six at Somerdale on 11th January and 52 north of Queen Charlton on 27th May. Also 40 at the sewage works on 27th February and 30 in the Memorial Park the previous day. In a Manor Road garden there was one that was a chick from 2023. It could not fly as its wings were not developed properly. It got lots of food and water and was still getting fed by its parents on 24th March.

Raven

The nest at Chewton Place was still used but success is not known; many reports probably refer to this pair. They may also have nested in a Pine tree in Queen Charlton again. Most reports were of one or two birds but four over a Manor Road garden on 24th March and over Broadmead Lane on 9th November. Three over Somerdale on 4th October, over the town on 10th December and south of Queen Charlton on 25th May. On 19th June two birds chased off a Red Kite over Manor Road and this happened again on 27th September. Many other reports over the area.

Mixed corvids

250 were estimated after the floodwater had receded on 2nd January. Later in the year floodwater by Broadmead Lane revealed 200. The Swineford stretch of the River Avon was frequented by 100 on 28th November, 120 on 8th December and 190 on New Year's Eve.

Starling

Winter bird surveys revealed 80 by the River Avon during the first winter bird surveys but

none in the second. In central Keynsham the figures in the two winter periods were 28 in the first and 41 in the second. Breeding bird surveys revealed 27 in central Keynsham and one near Field Grove Farm. A flock of 500 flew over Broadmead Lane on 21st November, perhaps coming from the roost at Chew Valley Lake. No other counts came anywhere near this figure so 60 in Princess Close, 51 in The Meadows and 50 in Manor Road, 50 in Queens Road, and 50 around Handel Road were reasonable. One was taken by a Sparrowhawk in Manor Road on 19th November.

Sparrows

House Sparrow

Winter bird surveys revealed 35 in central Keynsham in the first winter period and 12 in the second. Breeding bird surveys revealed 24 in central Keynsham. Twenty fed on fat balls in Balmoral Road on 27th June, 15 were seen in Manor Road Community Woodland on 12th February and up to ten around Queen Charlton.

Finches

Chaffinch

Another very poor year in our area. The only surveys that found any were three by the River Avon in the first winter and one in the second. Twenty around Broadmead Lane on 18th February and also on Bath Road on 16th November were the highest counts. There were 12 in a Manor Road garden on 8th January and Holm Mead on 29th December. Seen in several other places but few in number.

Brambling

At the start of the year one or two visited a Manor Road garden between 7th and 9th January. One at the end of Copse Road off Bath Road on 15th/16th and 23rd November.

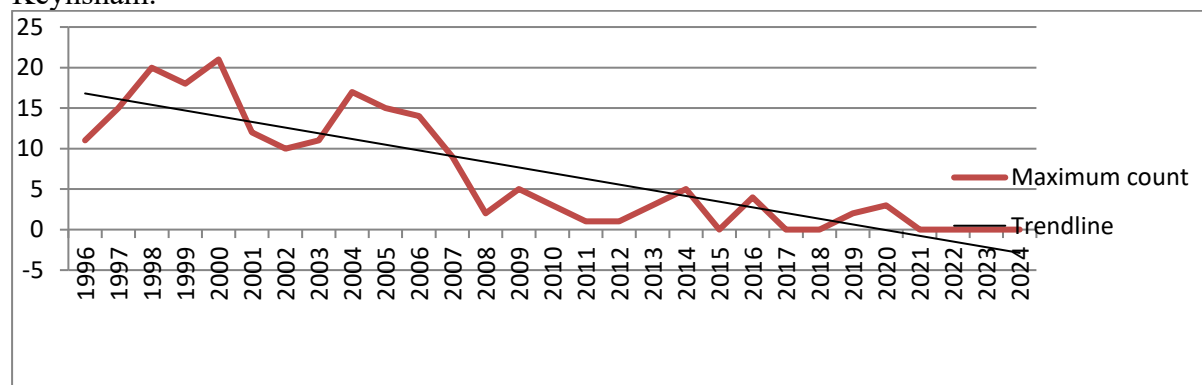
Bullfinch

Four females in a Manor Road garden on 18th December and two the following day were nice finds. Others were seen singles in Manor Road Community Woodland, the Memorial Park, Broadmead Lane, Somerdale, Holm Mead and the Queen Charlton area.

Greenfinch

Noted in ten months of the year in Stockwood Vale. At the end of Copse Road, just off Bath Road a huge flock 120 were feeding on Sunflower seeds on 15th November and 80 were still there on 23rd. Ten around Broadmead Lane was higher than we usually see in that area. Elsewhere, the best numbers were four in a Manor Road garden and five around Queen Charlton.

The following graph shows the decline as measured by the breeding bird survey in central Keynsham.



Goldfinch

Winter bird surveys revealed only one by the River Avon in the first winter period but 58 in the second. Two seen in central Keynsham. Breeding bird surveys revealed one in central Keynsham and six near Field Grove Farm. Sixty-four around Holm Mead on 16th November was a good figure and 40 were seen on Bath Road on the same day. Fifty in woods near Hicks Gate on 17th February was also a good count. Broadmead Lane numbers reached 31 on 9th November. Other reports included 18 at Chandos Laodge, 16 south of Queen Charlton and 15 in The Meadows.

Siskin

Seven records. Thirty by Holm Mead on 25th February and by the rugby club on 17th March were the highest counts. Only two reports in the second winter – two by Holm Mead and one by Broadmead Lane.

Linnet

The Broadmead Lane area was a hotspot for this species for the first half of the year. There were several counts of 20 to 30 birds, then 50 on 23rd February and 55 on the next two days. Numbers increased to 60 on 19th and 22nd March and then really took off with 250 on 23rd March, 200 on 27th and 150 on 29th, 90 on 4th April and 30 on 6th. Up to six were then present up to 24th May. No more reports here until 20th October (seven birds), then only three more reports of up to six. Note that 250 were also recorded here on 3rd April 2022.

Elsewhere, 35 at Somerdale on 31st March, 29 at Charlton Fields on 29th September and 40 at the end of Copse Road off Bath Road on 16th November. Calls were recorded in Park Road on 26th August.

Redpoll

Nine by the cycle track on 22nd March and one along the Swineford stretch of the River Avon on 11th November.

Buntings

Yellowhammer

One to three birds in the Charlton Fields/ Queen Charlton area between 29th February and 9th June; some song heard. None after that. Two at Holm Mead on 8th March and one on 30th. Broadmead Lane managed one on 21st April. Two used a bird bath in a Manor Road garden on 12th May and one on 4th June much to the surprise of the owner.

Reed Bunting

The Broadmead Lane area produced one on 23rd and 24th February and again on 19th March. There was one at Charlton Fields Farm on 29th February and Holm Mead on 30th March. A sound recording was made in Park Road on 2nd August.

BUTTERFLIES

It was a dreadful year for butterflies as can be seen below.

Skippers

Small Skipper

Only one report. It was in Handel Road on 14th July.

A Skipper in West View Road on 20th June could not be identified at species level.

Whites

Brimstone

An early awakener appeared in Balmoral Road on 15th February so probably then went back into hibernation. The next was near St John's Church on 6th March. On 17th March one was noted in Handel Road and Balmoral Road, and the next was in Manor Road on 30th March. On 12th April in West View Road a female laid eggs on Alder Buckthorn and the following

day Purging Buckthorn was used. Butterflies were then seen up to 19th May, then 17th June in Meadow Wood (perhaps the next generation) followed by Avon Close on 31st July. Also noted in Stockwood Vale and Charlton Park. Last seen on 16th September.

Orange Tip

An early one in West View Road on 8th April was followed by another in Handel Road four days later. Also noted in Stockwood Vale in April. The only other report was of two at Somerdale on 9th May.

Large White

Not recorded in many places but one or two seen between 7th May and 12th October.

Small White

Only single butterflies reported from gardens between 14th April and 4th October.

Green-veined White

One at Queen Charlton on 17th April and another at Somerdale on 23rd August.

Blues

Common Blue

Just a single sighting; it was in Handel Road on 10th August.

Holly Blue

Fourteen records compared to 48 in 2023 and only single insects in West View Road and Handel Road gardens. The first was on 8th April, then a few until 19th May. Second generation butterflies noted on 18th, 27th and 29th July.

Nymphalids

Small Tortoiseshell

Just one. It was along the Swineford stretch of the River Avon on 13th July.

Peacock

Another species with far fewer records than usual. First seen by the cycle track on 30th March, then on 12th, 14th and 17th April. Three at Somerdale on 9th May where larvae were seen on 24th June. Four in Lays Drive on 29th July was a little better but none were recorded after 1st August.

Comma

No overwintering ones were seen, the first being at Somerdale on 24th June; four noted here on 9th August. Five in Manor Road Community Woodland on 9th September was a reasonable number but none seen after 11th September.

Red Admiral

Recorded 22 times compared to 72 in 2023. The first was at Somerdale on 24th June, then noted on 29th June and 19th July. Four reports in August and 11 in September. In October, noted on 4th, 10th and 24th. Locations were the Memorial Park, Handel Road, Tesco's Lays Drive, West View Road, Manor Road Community Woodland, Parkhouse Lane, Meadow Wood and Stockwood Vale.

Browns

Ringlet

Just three. Somerdale on 24th June, Handel Road on 29th and West View Road on 2nd July.

Speckled Wood

More records than any other species. One in Handel Road on 30th March was very early but not the earliest on record (24th March in 2022). Then noted in every month up to October 27th. The highest number was eight at Somerdale on 9th September. Other reports from West View Road, the Swineford stretch of the River Avon, the cycle track, the Memorial Park, Parkhouse Lane and Stockwood Vale.

Meadow Brown

We are so used to seeing this species in significant numbers but not so this year. Perhaps no-one looked in the right places. Five along the Swineford stretch of the River Avon on 13th July was the best that were found. Five reports were from Handel Road and one in West View Road. Also noted at Somerdale.

Marbled White

Just one seen. It was in a Handel Road garden rather than its usual locations.

Gatekeeper

Another common species but only recorded in a Handel Road garden on 19th July, and 9th and 12th August.

MAMMALS

Badger

Regularly seen in a Stockwood Vale garden throughout the year. A red one was seen on one occasion. A male, female and two young were seen on 12th May. One dug into a meadow in two places, one of which contained bumblebees; they may have been digging for larvae.

Away from here, there were many tracks across the stoney lane that runs down to Chewton Place. A garden gate in Manor Road had to be kept closed to avoid Badgers damaging the lawn and plants. On 11th November one was seen through thermal imagery in Broadmead Lane. There was a road casualty on the bypass in early November.

Roe Deer

Recorded throughout the year in Stockwood Vale as in 2022 and 2023. The highest number was four until a fifth arrived on 26th November. A male appeared by Broadmead Lane between 30th April and 23rd May. Seen on Manor Road field on 6th and 7th May and again on 24th October. Two near Field Grove Farm on New Year's Eve.

Muntjac

All reports except one were in Stockwood Vale garden covering most of the year. Mostly singletons but two in January and on 15th November. One by Broadmead Lane on 10th January and 27th March and two on 22nd May.

Fox

The trail camera that had been used in Handel Road since 2020 was switched on regularly resulting in one to three being recorded on 155 occasions.

Seen on many occasions throughout the year in Stockwood Vale where detailed notes were taken.

On 12th March, one in the daytime in a Park Road garden was the first time that a Fox had been seen there. However, by 24th April there was a litter, and four days later there were six cubs and two adults. An adult and cub continued to be seen well into September.

In Balmoral Road there were three on the grass at the front of a house and one behind the house on 8th January. Another asleep on a rockery on 31st October.

One was seen in a Manor Road field on 2nd March (playing in snow), 4th April, 6th, 7th, 14th and 23rd May. One recorded in the Queen Charlton/Charlton Fields area on 27th April and 12th November. In August two cubs were playing on the top end of Charlton Road. One in

West View Road on 19th November and a sickly one in Mayfields in January. On 12th November one was seen near St. John's School.

One became a road traffic casualty on the bypass on or just before 19th April.

Hedgehog

The camera trap in Handel Road that recorded the Foxes also found Hedgehogs on 43 occasions (31 in 2022 and 29 in 2023) between 8th March and 12th December. Seen in a West View Road garden from April to September.

Hedgehogs or their droppings were found in a West View Road garden on 15th April, 6th May, 5th June, 26th June, 2nd July and 7th November. Also noted in Dunster Road and Torridge Road.

Road traffic victims were found in Queens Road on 10th March, St. Ladoc Road on 28th April and the Wellsway side of town on 1st May. A young one in Cranmore Avenue on 26th January should still have been hibernating; it was taken into care but died.

Grey Squirrel

So common and rarely recorded. They were actually noted in Manor Road Community Woodland, by the River Avon, the Brassmill, the Memorial Park, West View Road, Meadow Wood, by the cycle track, Charlton Fields, Somerdale, the Avenue and Charlton Park. A Handel Road garden was once more home to squirrels throughout the year where they have a drey near the top of a Birch tree.

Mole

So often overlooked as the animals themselves are rarely actually seen. Molehills were recorded in the Memorial Park, Chewton Keynsham, along the Hanham stretch of the River Avon and in a field off Bristol Road.

Brown Rat

Still present near the pond in the Memorial Park, perhaps because they like remains of food that is provided for the ducks. One outside Tesco's (!) and a dead one by the marina. One on a bird feeder in Charlton Park may have killed the young Robins that had been there. Broadmead Lane is also a haven for them.

Otter

Just one report but it is likely that they are often present in our area. One was seen in the River Chew near the mill.

Rabbit

As in 2023, regularly seen in a field off Manor Road. Also present around Broadmead Lane and the sewage works identified from their droppings but rarely actually seen.

Field Mouse

Noted in Charlton Park in September.

Bats

The planning application for a new footbridge at Somerdale required an ecological survey. It noted a range of bat species including Lesser Horseshoe Bat, Greater Horseshoe Bat, Brant's Bat and Whiskered Bat. It's not clear when they were recorded and it may not have been 2024.

Unidentified bats seen around the Broadmead Lane area around dusk and also over West View Road.

FLORA

Very little recording took place this year so that results in a significant gap in this report once

more.

Mistletoe was recorded at Chewton Place, Chewton Keynsham, Somerdale, the Memorial Park, Parkhouse Lane and Alexander Road.

Fox and Hounds Woodland

The key species, **Ivy Broomrape** is still there.

Manor Road Community Woodland

Broad-leaved Everlasting Pea was still present.

Fifteen **Scarlet Elf Cups** on 3rd March and **Chicken-of-the-woods** on willow on 9th September.

Somerdale

Common Toadflax, Common Valerian, Narrow-leaved Everlasting Pea, Tansy, Hemlock, Water Speedwell and Fleabane. Abundant **Himalayan Balsam** in the north-west corner.

Memorial Park

Himalayan Balsam needs to be controlled.

River Avon, Swineford direction

Nettle-leaved Bellflower and Yellow Water-lily. **Small Teasel** where the River Boyd enters the Avon.

The newly acquired wood opposite the Brassmill

Ivy dominant at ground level, **Laurel, Sycamore, Elder, Horse Chestnut, Bramble, Hawthorn and Russian Vine.**

Elsewhere

Primrose and Oxeye Daisy in flower by the roadside in Chewton Keynsham on the rather late date of 29th December.

Bath Asparagus and Hedge Woundwort in a Stockwood Vale garden.

Autumn Crocus on Hicks Gate roundabout once more

Many **Ash** trees that are relatively new were dying in Meadow Wood by 4th June.

Thirty **Mullein** near the sewage works.

Winter Heliotrope in The Avenue.

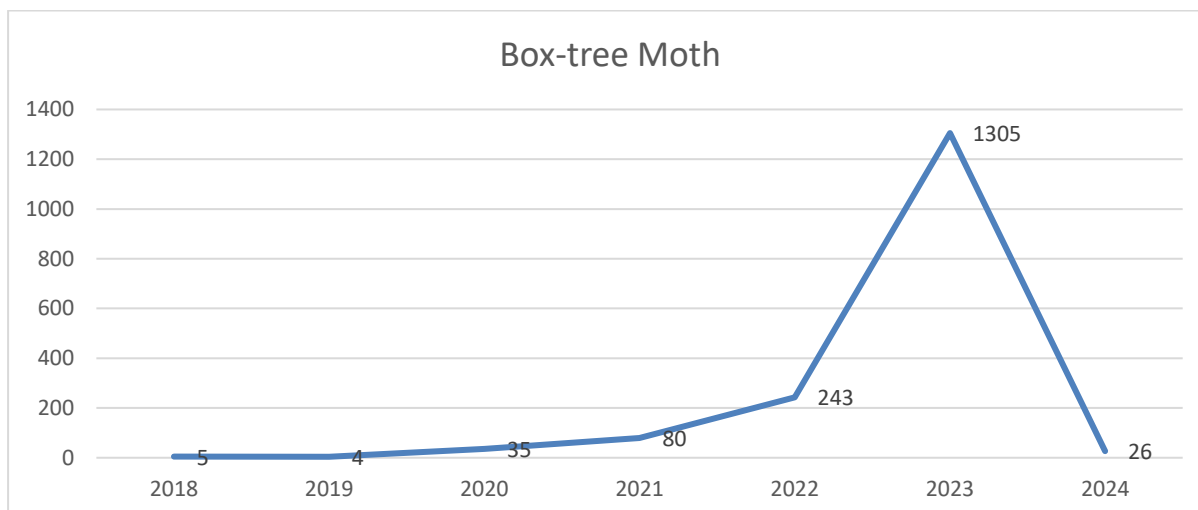
MOTHS

The moth traps that have previously been operated in Handel Road and Balmoral Road were run again. Table 1 combines sightings from both sites. Scientific and common names are shown together with counts. No less than 7500 moths of 311 species were identified in 2024. The night of 5th September was a particularly busy one when no less than 326 **Large Yellow Underwings**, 90 **Vine's Rustics** and 53 **Setaceous Hebrew Characters** were trapped,

There were seven new species this year. These were:

Coleophora trifolii, Digitivalva pulicariae, Acleris hastiana, Blastodacna atra, Apple Pith Moth, Eudemis profundana and Clouded Magpie. The latter is a beautiful moth and was at the extreme of its normal flight period and well outside its usual habitat.

The rise of **Box-tree moths** came to an abrupt end with only 26 caught. Perhaps they have destroyed most of their food plants (Box bushes) in the past couple of years but there still seem to be many that have not been affected. How numbers progress over the next few years will be interesting. A graph showing the number trapped over the past seven years:



Jersey Tigers are now becoming established after first appearing in 2011. One hundred and fifty-five were caught in 2024, just above the 2022 level and the reason for 2023 being lower is unclear. A graph showing the number trapped since they were first recorded:

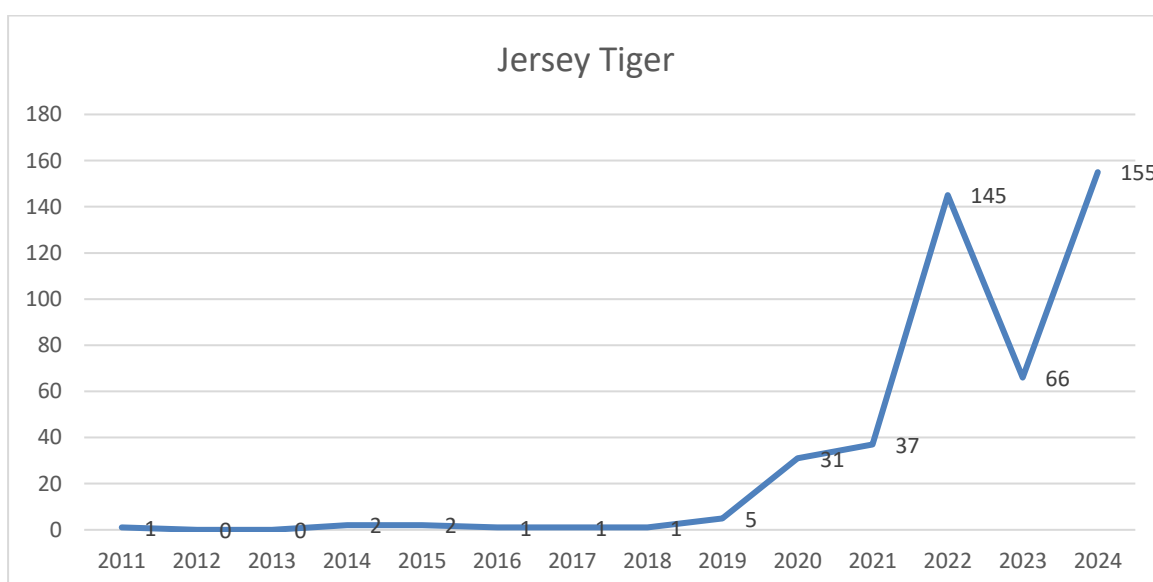


TABLE 1 – HANDEL ROAD and BALMORAL ROAD

Common name	Scientific name	Count
Acorn Piercer	<i>Pammene fasciana</i>	2
Alder Moth	<i>Acronicta alni</i>	3
Angle Shades	<i>Phlogophora meticulosa</i>	15
Apple Leaf Miner	<i>Lyonetia clerkella</i>	37
Apple Pith Moth	<i>Blastodacna atra</i>	1
Barred Sallow	<i>Tiliacea aurago</i>	1
Barred Straw	<i>Gandaritis pyraliata</i>	2
Barred Yellow	<i>Cidaria fulvata</i>	2
Beaded Chestnut	<i>Agrochola lychnidis</i>	3
Beautiful Hook-tip	<i>Laspeyria flexula</i>	1
Beautiful Plume	<i>Amblyptilia acanthadactyla</i>	19
Bee Moth	<i>Aphomia sociella</i>	31
Bird-cherry Ermine	<i>Yponomeuta evonymella</i>	117
Black Rustic	<i>Aporophyla nigra</i>	5
Blair's Shoulder-knot	<i>Lithophane leautieri</i>	5

Blood-vein	Timandra comae	3
Blue-bordered Carpet	Plemyria rubiginata	3
Bordered Beauty	Epione repandaria	1
Box-tree Moth	Cydalima perspectalis	26
Bright-line Brown-eye	Lacanobia oleracea	17
Brimstone Moth	Opisthograptis luteolata	256
Brindled Beauty	Lycia hirtaria	14
Broad-bordered Yellow Underwing	Noctua fimbriata	2
Brown House Moth	Hofmannophila pseudospretella	58
Brown Plume	Stenoptilia pterodactyla	1
Brussels Lace	Cleorodes lichenaria	1
Bud Moth	Spilonota ocellana	3
Buff Arches	Habrosyne pyritoides	2
Buff Ermine	Spilosoma lutea	21
Buff Footman	Eilema depressa	11
Buff-tip	Phalera bucephala	4
Burnished Brass	Diachrysia chrysitis	14
Buttoned Snout	Hypena rostralis	5
Cabbage Moth	Mamestra brassicae	1
Canary-shouldered Thorn	Ennomos alniaria	5
Case-bearing Clothes Moth	Tinea pellionella	1
Centre-barred Sallow	Atethmia centrargo	6
Chequered Fruit-tree Tortrix	Pandemis corylana	2
Cherry Bark Moth	Enarmonia formosana	4
Chestnut (moth)	Conistra vaccinii	1
Chinese Character	Cilix glaucata	4
Chocolate-tip	Clostera curtula	1
Cinereous Groundling	Bryotropha terrella	3
Cinnabar	Tyria jacobaeae	9
Clay	Mythimna ferrago	2
Cloaked Minor	Mesoligia furuncula	30
Clouded Border	Lomaspilis marginata	1
Clouded Drab	Orthosia incerta	8
Clouded Magpie	Abraxas sylvata	1
Clouded-bordered Brindle	Apamea crenata	1
Codling Moth	Cydia pomonella	20
Common Birch Bell	Epinotia immundana	2
Common Carpet	Epirrhoe alternata	24
Common Cloaked Shoot	Gypsonoma dealbana	1
Common Emerald	Hemithea aestivaria	4
Common Footman	Eilema lurideola	20
Common Grass-veneer	Agriphila tristella	39
Common Grey	Scoparia ambigualis	5
Common Marble	Celypha lacunana	14
Common Marbled Carpet	Dysstroma truncata	100
Common Plume	Emmelina monodactyla	35
Common Pug	Eupithecia vulgata	43
Common Quaker	Orthosia cerasi	18
Common Rustic	Mesapamea secalis	149
Common Swift	Korscheltellus lupulina	11
Common Wainscot	Mythimna pallens	14
Common Wave	Cabera exanthemata	3
Common White Wave	Cabera pusaria	2
Copper Underwing	Amphipyra pyramidea	7
Coronet	Craniophora ligustri	11

Currant Pug	Eupithecia assimilata	1
Cypress Pug	Eupithecia phoeniceata	1
Cypress Tip Moth	Argyresthia cupressella	1
Dark Arches	Apamea monoglypha	39
Dark Chestnut	Conistra ligula	1
Dark Dagger or Grey Dagger (undetermined)	Acronicta psi/tridens	2
Dark Fruit-tree Tortrix	Pandemis heparana	2
Dark Spectacle	Abrostola triplasia	1
Dark Sword-grass	Agrotis ipsilon	2
Deep-brown Dart	Aporophyla lutulenta	1
Diamond-back Moth	Plutella xylostella	9
Dingy Footman	Eilema griseola	22
Double-striped Pug	Gymnoscelis rufifasciata	43
Double-striped Tabby	Hypsopygia glaucinalis	1
Dun-bar	Cosmia trapezina	5
Dusky Sallow	Eremobia ochroleuca	2
Dusky Thorn	Ennomos fuscantaria	17
Early Grey	Xylocampa areola	6
Elephant Hawk-moth	Deilephila elpenor	37
European Corn Borer	Ostrinia nubilalis	12
Eyed Hawk-moth	Smerinthus ocellata	4
Fan-foot	Herminia tarsipennalis	10
Feathered Thorn	Colotois pennaria	4
Figure of Eighty	Tethea ocularis	1
Flame	Axylia putris	6
Flame Carpet	Xanthorhoe designata	2
Flame Shoulder	Ochroleptura plecta	65
Flounced Rustic	Luperina testacea	14
Four-spotted Obscure	Oegoconia quadripuncta	1
Foxglove Pug	Eupithecia pulchellata	1
Freyer's Pug	Eupithecia intricata	3
Furness Dowd	Blastobasis adustella	10
Garden Carpet	Xanthorhoe fluctuata	64
Garden Grass-veneer	Chrysoteuchia culmella	131
Garden Pebble	Evergestis forficalis	24
Garden Rose Tortrix	Acleris variegana	3
Garden Tiger	Arctia caja	12
Gelechiidae family	Gelechiidae	1
Gold Spot	Plusia festucae	5
Gold Triangle	Hypsopygia costalis	4
Golden Argent	Argyresthia goedartella	1
Green Carpet	Colostygia pectinataria	3
Green Oak Tortrix	Tortrix viridana	1
Green Pug	Pasiphila rectangulata	3
Grey Knot-horn	Acrobasis advenella	4
Grey Pine Carpet	Thera obeliscata	2
Haworth's Pug	Eupithecia haworthiata	1
Heart and Club	Agrotis clavis	37
Heart and Dart	Agrotis exclamationis	329
Hebrew Character	Orthosia gothica	41
Herald	Scoliopteryx libatrix	4
Hoary Belle	Eucosma cana	1
Honeysuckle Moth	Ypsolopha dentella	1
Hook-streak Grass-veneer	Crambus lathoniellus	4
Horse Chestnut Leaf-miner	Cameraria ohridella	3

Iron Prominent	Notodonta dromedarius	4
Jersey Tiger	Euplagia quadripunctaria	155
Juniper Webber	Dichomeris marginella	5
Kent Black Arches	Meganola albula	2
Knot Grass (moth)	Acronicta rumicis	28
Lackey	Malacosoma neustria	4
L-album Wainscot	Mythimna l-album	5
Large Clover Case-bearer	Coleophora trifolii	1
Large Fruit-tree Tortrix	Archips podana	1
Large Ranunculus	Polymixis flavicincta	1
Large Yellow Underwing	Noctua pronuba	1091
Least Black Arches	Nola confusalis	1
Least Carpet	Idaea rusticata	1
Lesser Broad-bordered Yellow Underwing	Noctua janthe	114
Lesser Wax Moth	Achroia grisella	1
Lesser Yellow Underwing	Noctua comes	141
Light Arches	Apamea lithoxylaea	3
Light Brown Apple Moth	Epiphyas postvittana	123
Light Emerald	Campaea margaritaria	34
Lime Hawk-moth	Mimas tiliae	5
Lime-speck Pug	Eupithecia centaureata	8
Long-horned Flat-body	Carcina quercana	6
Lunar Underwing	Omphaloscelis lunosa	88
Lychnis (moth)	Hadena bicruris	10
Magpie Moth	Abraxas grossulariata	1
Maiden's Blush	Cyclophora punctaria	3
Maple Button	Acleris forsskaeana	4
Marbled Green	Nyctobrya muralis	15
Marbled Minor	Oligia strigilis	60
Marbled Orchard Tortrix	Hedya nubiferana	5
Marbled Piercer	Cydia splendana	1
March Moth	Alsophila aescularia	2
March Tubic	Diurnea fagella	1
Meal Moth	Pyrallis farinalis	10
Middle-barred Minor	Oligia fasciuncula	1
Mocha	Cyclophora annularia	4
Mother of Pearl	Pleuroptya ruralis	53
Mottled Rustic	Caradrina morpheus	1
Muslin Moth	Diaphora mendica	25
November Moth	Epirrita dilutata	1
Nut Bud Moth	Epinotia tenerana	1
Nut-tree Tussock	Colocasia coryli	1
Oak Beauty	Biston strataria	2
Oak Hook-tip	Watsonalla binaria	1
Old Lady	Mormo maura	7
Olive Pearl	Udea olivalis	4
Orange Footman	Eilema sororcula	3
Orange Swift	Triodia sylvina	8
Pale Mottled Willow	Caradrina clavipalpis	36
Pale Prominent	Pterostoma palpina	3
Pale Tussock	Calliteara pudibunda	2
Pebble Hook-tip	Drepana falcataria	6
Pebble Prominent	Notodonta ziczac	1
Peppered Moth	Biston betularia	3
Pine Leaf-mining Moth	Clavigesta purdeyi	1
Pinion-streaked Snout	Schrankia costaestrigalis	2

Plum Tortrix	Hedya pruniana	4
Poplar Grey	Subacronicta megacephala	1
Poplar Hawk-moth	Laothoe populi	5
Powdered Quaker	Orthosia gracilis	1
Privet Hawk-moth	Sphinx ligustri	12
Privet Twist	Clepsis consimilana	3
Puss Moth	Cerura vinula	2
Red Underwing	Catocala nupta	1
Red-barred Tortrix	Ditula angustiorana	9
Red-green Carpet	Chloroclysta siterata	1
Red-line Quaker	Agrochola lota	2
Riband Wave	Idaea aversata	150
Ringed China-mark	Parapoynx stratiotata	2
Rivulet	Perizoma affinitata	1
Rosy Footman	Miltochrista miniata	3
Ruby Tiger	Phragmatobia fuliginosa	5
Ruddy Streak	Tachystola acroxantha	169
Rustic	Hoplodrina blanda	10
Rustic Shoulder-knot	Apamea sordens	14
Rusty Dot	Udea ferrugalis	4
Satellite	Eupsilia transversa	1
Satin Grass-veneer	Crambus perlella	1
Scalloped Oak	Crocallis elinguaris	8
Scarce Footman	Eilema complana	1
Scarlet Tiger	Callimorpha dominula	8
Scorched Carpet	Ligdia adustata	4
September Thorn	Ennomos erosaria	2
Setaceous Hebrew Character	Xestia c-nigrum	260
Shaded Broad-bar	Scotopteryx chenopodiata	2
Shuttle-shaped Dart	Agrotis puta	184
Silver Y	Autographa gamma	71
Silver-ground Carpet	Xanthorhoe montanata	2
Single-dotted Wave	Idaea dimidiata	2
Small Blood-vein	Scopula imitaria	9
Small Dusty Wave	Idaea seriata	9
Small Elephant Hawk-moth	Deilephila porcellus	2
Small Emerald	Hemistola chrysoprasaria	6
Small Fan-footed Wave	Idaea biselata	1
Small Magpie	Anania hortulata	26
Small Phoenix	Ecliptopera silaceata	1
Small Quaker	Orthosia cruda	1
Small Ranunculus	Hecatera dysodea	5
Small Rivulet	Perizoma alchemillata	2
Small Square-spot	Diarsia rubi	13
Smoky Wainscot	Mythimna impura	5
Snout	Hypena proboscidalis	49
Spectacle	Abrostola tripartita	26
Spruce Carpet	Thera britannica	1
Square-spot Rustic	Xestia xanthographa	142
Straw Dot	Rivula sericealis	58
Straw Grass-veneer	Agriphila straminella	92
Straw Underwing	Thalpophila matura	79
Swallow Prominent	Pheosia tremula	2
Swallow-tailed Moth	Ourapteryx sambucaria	8
Tawny Marbled Minor	Oligia latruncula	1
Thistle Ermine	Myelois circumvoluta	1

Treble Brown Spot	<i>Idaea trigeminata</i>	4
Treble Lines	<i>Charanyca trigrammica</i>	150
Turnip Moth	<i>Agrotis segetum</i>	2
Twenty-plume Moth	<i>Alucita hexadactyla</i>	8
Uncertain	<i>Hoplodrina octogenaria</i>	215
Vine's Rustic	<i>Hoplodrina ambigua</i>	268
V-Pug	<i>Chloroclystis v-ata</i>	1
Water Veneer	<i>Acentria ephemerella</i>	9
Waved Umber	<i>Menophra abruptaria</i>	7
White Ermine	<i>Spilosoma lubricipeda</i>	7
White-shouldered House Moth	<i>Endrosis sarcitrella</i>	21
Willow Beauty	<i>Peribatodes rhomboidaria</i>	211
Yellow Shell	<i>Camptogramma bilineata</i>	15
Yellow-barred Brindle	<i>Acasis viretata</i>	1
Yellow-tail	<i>Euproctis similis</i>	1
a <i>Caloptilia</i> species	<i>Caloptilia</i>	1
a <i>Cnephasia</i> species	<i>Cnephasia</i>	4
a <i>Coleophora</i> species	<i>Coleophora</i>	1
a micro-moth	<i>Batia lunaris</i>	1
a micro-moth	<i>Blastobasis lacticolella</i>	1
a micro-moth	<i>Bryotropha domestica</i>	7
a micro-moth	<i>Caloptilia rufipennella</i>	1
a micro-moth	<i>Caloptilia semifascia</i>	1
a micro-moth	<i>Caloptilia stigmatella</i>	1
a micro-moth	<i>Cochylis atricapitana</i>	10
a micro-moth	<i>Coleophora albitarsella</i>	1
a micro-moth	<i>Crassa unitella</i>	2
a micro-moth	<i>Digitivalva pulicariae</i>	1
a micro-moth	<i>Epermenia chaerophyllella</i>	1
a micro-moth	<i>Helcystogramma rufescens</i>	3
a micro-moth	<i>Metalampra italica</i>	9
a micro-moth	<i>Mompha subbistrigella</i>	1
a micro-moth	<i>Scrobipalpa costella</i>	1
a micro-moth	<i>Teleiodes vulgella</i>	1
a micro-moth	<i>Tinea trinotella</i>	1
a november or autumnal moth (unidentified)	<i>Epirrita</i>	2
a <i>Phyllonorycter</i> species	<i>Phyllonorycter</i>	1
a pyralid moth	<i>Agriphila geniculea</i>	33
a pyralid moth	<i>Anania coronata</i>	28
a pyralid moth	<i>Calamotropha paludella</i>	1
a pyralid moth	<i>Endotricha flammealis</i>	24
a pyralid moth	<i>Ephestia woodiella</i>	10
a pyralid moth	<i>Eudonia angustea</i>	21
a pyralid moth	<i>Eudonia lacustrata</i>	24
a pyralid moth	<i>Eudonia pallida</i>	1
a pyralid moth	<i>Euzophera pinguis</i>	5
a pyralid moth	<i>Nephoterix angustella</i>	2
a pyralid moth	<i>Palpita vitrealis</i>	3
a pyralid moth	<i>Pyrausta aurata</i>	16
a pyralid moth	<i>Pyrausta purpuralis</i>	2
a pyralid moth	<i>Scoparia subfusca</i>	1
a pyralid moth	<i>Udea prunalis</i>	15
a small ermine moth (unidentified)	<i>Yponomeuta</i>	337
a tortrix moth	<i>Acleris</i>	1
a tortrix moth	<i>Acleris hastiana</i>	1

a tortrix moth	Acleris notana/comariana	1
a tortrix moth	Acleris umbrana	1
a tortrix moth	Ancylis achatana	5
a tortrix moth	Celypha striana	72
a tortrix moth	Cydia amplana	1
a tortrix moth	Cydia fagiglandana	1
a tortrix moth	Dichrorampha acuminatana	2
a tortrix moth	Epiblema costipunctana	1
a tortrix moth	Epinotia bilunana	1
a tortrix moth	Eudemis profundana	1
a tortrix moth	Grapholita tenebrosana	1
a tortrix moth	Lozotaeniodes formosana	1
a tortrix moth	Notocelia cynosbatella	12
a tortrix moth	Notocelia rosaecolana	1
a tortrix moth	Notocelia trimaculana	7
a tortrix moth	Pseudargyrotoza conwagana	2
a tortrix moth	Syndemis musculana	9
An Ephestia species	Ephestia	3
An Oegoconia species	Oegoconia	4

Elsewhere, the following species were found:

Stockwood Vale

Small Dusty Wave on 13th May. Also **Eyed Hawk-moth**, **Marbled White Spot**, **Ruby Tiger** and **Riband Wave**.

West View Road

Old Lady on 1st July.

Somerdale

Fifteen **Cinnabar** larvae on Ragwort on 9th August, 13 **Ruby Tiger** larvae on footpaths on 22nd October and an adult male **Vapourer** on 23rd August.

Charlton Park

Common Plume and **Small Magpie**.

Tintagel Close

Three **Cinnabar** larvae on 28th July.

River Avon

Chrysoteuchia culmella, **Silver Y** and **Cinnabar**.

Manor Road Community Woodland

Many brown leaves after being eaten by tiny **Horse-chestnut Leaf-miner** larvae.

Cycle track

A small but stunning **Alabonia geoffrella** on 27th May.

Apart from those mentioned in the table above, the larvae of **Knot-grass**, **Angle Shades**, **Large Yellow Underwing** and **Cinnabar** were found in Handel Road as were the dreaded **Case-bearing Clothes Moths**.

DRAGONFLIES AND DAMSELFLIES

Records of dragonflies are a bit thin on the ground again. Not because of falling numbers but the lack of records. Information about any species in future years would be very welcome.

Beautiful Demoiselle

Six at Somerdale on 9th May, 11 along the Swineford stretch of the River Avon on 16th May and also present in the Memorial Park.

Banded Demoiselle

First seen at Somerdale on 9th May and latest was there on 9th August. There was an extremely good count of 410 along the Swineford stretch of the River Avon on 16th May. Also noted in the Memorial Park, the Brassmill pond and Siston Brook.

White-legged Damselfly

No large counts this year. Nine along the Swineford stretch of the River Avon on 16th May, the day when the previous species was seen in large numbers. Twelve at Somerdale on 24th June.

Large Red Damselfly

Only found along the Swineford stretch of the River Avon (12 on 16th May) and at Somerdale (12 on 24th June).

Azure Damselfly

Very small numbers by the River Avon, the Memorial Park and a West View Road garden.

Blue-tailed Damselfly

Eight along the Swineford stretch of the River Avon. Also in the Memorial Park.

Red-eyed Damselfly

Five along the Swineford stretch of the River Avon on 13th July.

Southern Hawker

Noted in a Handel Road garden on five days. Seven in Manor Road Community Woodland on 9th September.

Migrant Hawker

Singles in Handel Road, by the sewage works and in the Memorial Park.

Brown Hawker

One at Somerdale on 23rd August.

Scarce Chaser

Only two found; they were along the Swineford stretch of the River Avon on 27th May.

Back-tailed Skimmer

One along the Swineford stretch of the River Avon on 13th July.

Common Darter

Only noted at Somerdale, Keynsham Abbey, Manor Road Community Woodland and in Handel Road.

OTHER INSECTS***Ladybirds***

Twelve 2-spot Ladybirds at Somerdale on 9th May, and one in a Handel Road moth trap on 1st August.

Forty 7-spot Ladybirds at Somerdale on 9th May. Also on the Willsbridge Road at the point where it goes over the bypass, by the River Avon, the cycle track, the sewage works and in

Handel Road.

10-spot Ladybirds in Handel Road on four dates.

A **14-spot Ladybird** at Somerdale on 19th October.

A **22-spot Ladybird** at Somerdale on 9th May.

Harlequin Ladybirds caught in a Handel Road moth trap. Also Somerdale, the sewage works and ten on the Willsbridge Road at the point where it goes over the bypass.

An **Orange Ladybird** caught in a Handel Road moth trap on 31st July.

Shieldbugs

Three **Birch Shieldbugs** in Handel Road.

A **Hawthorn Shieldbug** in a Handel Road moth trap on 13th May.

Seven **Dock Bugs** on Parkhouse Lane, six at Somerdale and one in West View Road.

Up to four **Forest Bugs** in a Handel Road moth trap on seven occasions between 30th July and 6th September.

A **Brassica Bug** at Somerdale on three dates in October.

Eighteen **Green Shieldbugs** in the north-west corner of Somerdale on 23rd August. Also in West View Road and Handel Road.

An adult and two nymphs of **Southern Green Shieldbug** in the north-west corner of Somerdale on 4th and 22nd October. This is a recent colonist with very few records in Avon so a very significant record.

A **Parent Bug** in Handel Road on two occasions and one at Somerdale.

Hairy Shieldbugs in the north-west corner of Somerdale and in Handel Road.

A **Western Conifer Shieldbug** in a Balmoral Road moth trap on 18th March.

Bugs

Two gardens revealed most of the bugs that were identified. West View Road hosted a **Meadow Plant Bug**, **Pond Skaters** and several **Water Measurers**. Handel Road revealed **Acericus heydenii**, **Issus coleoptratus**, **Ledra aurita**, **Tremulicerus** and **Zygina flammigera**. **Leptoderma dolabrata** was identified at Somerdale.

Deraeocoris ruber (Red Bug) at Somerdale.

Hundreds of **Heterogaster urticae** on nettles at Somerdale on 23rd August.

Many **Water Measurers** in West View Road on 12th May.

Beetles

Cockchafers in a Handel Road moth trap on three days in May.

Twenty-five **Alder Leaf Beetles** in West View Road in April and May.

Common Burying Beetles in a Handel Road in July.

A **Great Diving Beetle** in a Handel Road pond.

Green Dock Beetles at Somerdale.

A **Knotgrass Leaf Beetle** along the Swineford stretch of the River Avon.

A **Lesser Stag Beetle** in a West View Road garden.

A **Red-headed Cardinal** at Somerdale.

A **Swollen-thighed Beetle** in Handel Road.

A **Wasp Beetle** at the sewage works on 16th May.

Amara aenea at Somerdale on 19th October.

Phosphuga atrata (Black Snail Beetle) at Somerdale on 19th October.

Platydacus stercorarius in Stockwood Vale in June.

Flies

Many **Semaphore Flies** by the pond in a West View Road garden on 23rd June, the same date as in 2023.

Dark-edged Bee-flies in Handel Road and West View Road in April.

Scorpionflies at Somerdale.

A **September Crane-fly** in Manor Road Community Woodland.

A **Bramble Sawfly** at the sewage works on 16th May.
Xanthostigma xanthostigma (Small Snakefly) in Handel Road on 14th June.

Grasshoppers and Crickets

Dark Bush-crickets at Somerdale and by the marina.
Field Grasshoppers at Somerdale.
Five **Speckled Bush-crickets** in the north-west corner of Somerdale on 23rd August.
A **Roesel's Bush-cricket** at Somerdale on 9th August.

Bees and wasps

Honey Bees in West View Road in June and July.
Common Wasps did not return to a Handel Road moth trap in large numbers this year. However, 15 entered on 21st August.
A **German Wasp** in Colne Green on New Year's Eve.
Wool Carder Bees on Lamb's Ear in a West View Road garden in June and July.
A **Leafcutter Bee** cut sections from a Dog Rose in West View Road.
A **Buff-tailed Bumblebee** on Winter Heliotrope in Balmoral Road on 4th January.
Early Mining Bee at Somerdale.
Fourteen **Hornets** by the cycle track on 24th October at the same spot as 2023.
Mason Bees nested in Daisy Close but there were fewer than in 2023.
Metopius Ichneumon in Handel Road.
Ichneumons by the River Avon.

Others

In Handel Road, **Curculio glandium (weevil)**, **Blue-winged Olive**, **Ephemera vulgata** and **Zebra spider**.
At Somerdale, **Yellow and Black Leafhopper**, **Striped Millipede** and **Four-spotted Orbweaver**.
Ephemera vulgata by the River Avon.

WATER QUALITY

River dipping that has played a significant part in this report over the years is unfortunately missing because the water in the River Chew was too deep.

AMPHIBIANS, REPTILES, MOLLUSCS and other species

The first **Frog** appeared in a Handel Road pond on 3rd February and the first frogspawn the following day. Daisy Close's first frogspawn was on 9th. The first frogs in West View Road were on 10th. Clumps peaked at 25 in West View Road and 16 in Handel Road. Thirty clumps were counted in Manor Road Community Woodland on 3rd March. No **Toads** were recorded in 2024.

Two **Palmate Newts** were noted in West View Road on 18th February and ten two days later. An unusual albino newt appeared in Daisy Close on 30th March.

Slow-worms were noted in Stockwood Vale after the meadow had been cut and another along the cycle track.

Swan Mussels were found on the river bank near the Lock Keeper on 17th January.

CONCLUSION

I hope that this report has proved to be interesting. Although many species are the same as in previous years, new ones continue to be found. The report has been compiled from over 6,000 individual items of data, which is significant for a fairly small area. Much of the data is passed on to Bristol Regional Environmental Records Centre (BRERC) by the finders, and I know that they appreciate this; they are interested in all aspects of wildlife, not just the rarer species, so please send them the data as well as to me. It is very easy to do this via their

website www.brerc.org.uk.

Thank you very much to everyone who has contributed to this report again. Particular thanks go to Jenny Aldridge, Alan Bone, Janet Cann, Kathy and Martin Farrell, Andrew Harrison, Alan Hewett, Tony Kirby, Nick Page, Elspeth Rolls, Julia Shahin, Paul Tompkins, Andy Wait and Liz Wintle. An extract of data provided for the Avon Bird Report has been made available, which has been extremely useful. Information has also been picked up from various websites and blogs including Avon Birds that is updated daily and includes a huge amount of information and photographs. It can be found at <https://avonbirding.blogspot.com/> and is available to everyone.

John Aldridge
1A Handel Road, Keynsham, Bristol BS31 1BT
Email johnaldridge40@gmail.com

References:

Ian Green, Rupert Higgins, Clare and Mark Kitchen, 2000, *The Flora of the Bristol Region*
Ray Barnett, Rupert Higgins, Tony Moulin, Chris Wiltshire et al, 2003, *Butterflies of the Bristol Region*
Ray Barnett, Richard Andrews, Mike Bailey, Tim Corner, Rupert Higgins and John Martin, 2008, *Moths of the Bristol Region*
Ray Barnett, Richard Andrews, Tim Corner, Rupert Higgins, John Martin and Abigail Pedlow, 2012, *Dragonflies and Damselflies of the Bristol Region*
Paul Waring, Martin Townsend and Richard Lewington, 2003, *Field Guide to the Moths of Great Britain and Ireland*
Phil Sterling, Mark Parsons and Richard Lewington, 2012, *Field Guide to the Micro Moths of Great Britain and Ireland*
British and Irish Moths website
UK Moths website



Meadow Pipit, River Avon, 30th March

Appendix A1 Breeding Birds Survey for one kilometre squares ST6669 (Near Field Grove Farm) and ST6568 (including the River Chew north of Dapps Hill)

Note that the inclusion of any species does not necessarily mean that it bred or attempted to do so, but that the species was present during the breeding season.

Species	1 kilometre square ST6669		1 kilometre square ST6568	
	14/4/24	4/6/24	23/4/24	3/6/24
Blackbird	2	5	4	7
Blackcap	2	7	3	2
Blue Tit	2	1	2	1
Buzzard	2			
Canada Goose	14			
Carrion Crow	8	5	13	7
Chiffchaff	4	2	1	1
Collared Dove			10	6
Cormorant	1			
Dunnock	4	2	3	1
Feral Pigeon	23	5	29	14
Goldfinch	3	6	1	
Great Spotted Woodpecker	1			
Great Tit	6		2	
Grey Heron	1			1
Grey Wagtail			1	2
Herring Gull		3	2	2
House Sparrow			24	23
Jackdaw	3	10	21	38
Lesser Black-backed Gull	3	2	5	44
Magpie	4	5	3	2
Mallard	13	13	9	22
Mistle Thrush	1			
Moorhen	1	1	1	1
Mute Swan		2		
Pied Wagtail	1			
Robin	8	3	7	6
Rook			9	1
Skylark		2		
Song Thrush	1		1	
Starling		1	27	36
Swallow		2		
Swift		2		230
Woodpigeon	18	12	28	
Wren	10		8	9

Appendix B1 **First winter counts for one kilometre squares ST6669 and ST6768**
(both by the River Avon)

	1 kilometre square ST6669			1 kilometre square ST6768	
Species	18/1/24	15/2/24		18/1/24	15/2/24
Black-headed Gull	1	540		100	54
Blackbird				4	2
Blue Tit	2			6	5
Canada Goose	44	75		1	
Carrion Crow	12			8	40
Chaffinch	3	2			1
Chiffchaff					1
Common Gull		1			
Cormorant	3	1		4	2
Duncock		1		1	3
Feral Pigeon				20	2
Fieldfare		6			
Goldfinch					1
Great Spotted Woodpecker	1				
Great Tit	4	4		3	6
Green Woodpecker		2			
Grey Heron	1				1
Herring Gull				1	1
Jackdaw				3	4
Lesser Black-backed Gull	1	1		10	1
Little Grebe				1	
Long-tailed Tit		4		1	
Magpie	1			1	4
Mallard	22	15		5	30
Meadow Pipit		2			
Mistle Thrush					1
Moorhen	7	4		1	
Mute Swan				4	
Redwing		46			
Robin		3		4	7
Skylark		2			
Snipe	7	2			
Sparrowhawk				1	
Starling		80			
Woodpigeon	1	50		5	8
Wren	1	1		2	2

**Appendix B2 Second winter counts for one kilometre squares ST6669 and ST6768
(both by the River Avon)**

	1 kilometre square ST6669			1 kilometre square ST6768	
Species	11/11/24	2/12/24		11/11/24	2/12/24
Black-headed Gull	21	188		5	128
Blackbird	2			4	
Blue Tit	3			1	2
Buzzard		1			
Canada Goose	2			2	12
Carrion Crow	23	65		10	9
Chaffinch	1				1
Coal Tit					1
Common Gull		130			
Cormorant	1	1		1	
Dunnock				2	
Egyptian Goose					2
Feral Pigeon					5
Fieldfare	17				
Goldcrest	1				
Goldfinch	30	1		28	1
Great Tit	1			1	3
Great White Egret		1			
Green Woodpecker	1				
Grey Wagtail				1	
Herring Gull		11			2
Jackdaw	27	3		7	5
Kestrel		1			
Kingfisher					1
Lesser Black-backed Gull		7		4	1
Magpie	7	1		2	4
Mallard	8			11	14
Moorhen	10	3		5	
Mute Swan				1	2
Pied Wagtail	6			1	4
Redpoll				1	
Redwing	2				
Robin	2			4	2
Skylark	1				
Sparrowhawk		1			
Teal	1				
Song Thrush				1	
Woodpigeon	17	7		15	8
Wren	3	1		5	

**Appendix B3 First and second winter counts for one kilometre square ST6568
(central Keynsham)**

Species	31/1/24		3/12/24
Black-headed Gull	13		5
Blackbird	6		5
Blue Tit	6		3
Carrion Crow	8		9
Collared Dove	14		8
Dunnoek	4		
Feral Pigeon	53		51
Goldfinch			2
Great Tit	1		2
Grey Heron			1
Herring Gull	6		4
House Sparrow	35		12
Jackdaw	36		39
Jay			1
Kingfisher	1		1
Lesser Black-backed Gull	3		3
Long-tailed Tit			2
Magpie	9		5
Mallard	24		6
Moorhen	7		7
Pied Wagtail	1		2
Raven			1
Redwing	1		
Robin	12		13
Rook			1
Song Thrush	1		
Starling	28		41
Water Rail			1
Woodpigeon	47		37
Wren			1

Appendix C1 Park Road garden

A tick indicates that the species was present.

Species	Jan	Feb	Mar	Apr	May	Jun	Jul	Aug	Sep	Oct	Nov	Dec
Blackbird	✓	✓	✓	✓	✓	✓	✓			✓	✓	✓
Blue Tit	✓	✓	✓	✓		✓	✓	✓	✓	✓	✓	✓
Carrion Crow	✓	✓	✓	✓	✓	✓	✓				✓	✓
Collared Dove	✓	✓	✓			✓	✓	✓	✓	✓		
Dunnock	✓	✓	✓	✓	✓	✓	✓			✓	✓	✓
Feral Pigeon	✓	✓	✓	✓	✓	✓	✓	✓	✓	✓	✓	✓
Goldfinch	✓			✓		✓				✓	✓	✓
Great Tit	✓	✓	✓	✓		✓	✓	✓	✓	✓	✓	✓
Greenfinch			✓	✓		✓	✓	✓				✓
House Sparrow	✓	✓	✓	✓		✓	✓	✓	✓	✓	✓	✓
Jackdaw				✓	✓	✓						
Lesser Black-backed Gull					✓	✓						
Long-tailed Tit												✓
Magpie	✓	✓	✓	✓	✓	✓	✓	✓	✓	✓	✓	✓
Robin	✓	✓	✓			✓	✓	✓	✓	✓	✓	✓
Starling	✓	✓	✓	✓	✓	✓	✓	✓	✓	✓	✓	✓
Woodpigeon	✓	✓	✓	✓	✓		✓	✓	✓	✓	✓	✓
Wren								✓				

Appendix C2 Balmoral Road

A tick indicates that the species was present either in a garden or flying over.

Species	Jan	Feb	Mar	Apr	May	Jun	Jul	Aug	Sep	Oct	Nov	Dec
Blackbird	✓	✓	✓	✓	✓	✓	✓	✓		✓	✓	✓
Blackcap	✓				✓							✓
Black-headed Gull	✓									✓	✓	✓
Blue Tit	✓	✓	✓	✓	✓	✓	✓	✓	✓	✓	✓	✓
Buzzard					✓	✓	✓	✓	✓		✓	
Carrion Crow	✓	✓	✓	✓	✓	✓	✓	✓	✓	✓	✓	✓
Chaffinch	✓	✓	✓								✓	✓
Chiffchaff							✓					
Coal Tit	✓					✓		✓	✓			
Collared Dove	✓	✓	✓	✓	✓	✓	✓	✓	✓	✓	✓	✓
Duncock	✓	✓	✓	✓	✓	✓						✓
Feral Pigeon	✓	✓	✓	✓	✓	✓	✓	✓	✓	✓	✓	✓
Goldcrest	✓	✓	✓	✓	✓	✓	✓	✓	✓	✓	✓	✓
Goldfinch		✓	✓	✓	✓	✓	✓	✓				✓
Great Tit	✓	✓	✓	✓	✓				✓			✓
Great White Egret		✓										
Green Woodpecker										✓		
Grey Heron				✓		✓		✓				
Herring Gull	✓	✓	✓	✓	✓	✓	✓	✓	✓	✓	✓	✓
House Sparrow	✓	✓	✓	✓	✓	✓	✓	✓		✓	✓	✓
Jackdaw	✓	✓	✓	✓	✓	✓	✓	✓	✓	✓	✓	✓
Lesser Black-backed Gull	✓	✓	✓	✓	✓	✓	✓	✓	✓	✓	✓	✓
Long-tailed Tit						✓			✓			✓
Magpie	✓	✓	✓	✓	✓	✓	✓	✓	✓	✓	✓	✓
Mallard			✓									
Pied Wagtail	✓									✓	✓	✓
Raven		✓	✓		✓		✓	✓	✓	✓		
Red Kite						✓	✓					
Robin	✓	✓	✓	✓	✓	✓	✓	✓	✓	✓	✓	✓
Rook										✓		
Song Thrush						✓						
Sparrowhawk			✓		✓	✓	✓					
Starling	✓	✓	✓	✓	✓	✓	✓	✓	✓	✓	✓	✓
Swift					✓	✓	✓	✓				
Woodpigeon	✓	✓	✓	✓	✓	✓	✓	✓	✓	✓	✓	✓
Wren	✓	✓					✓				✓	
Total Species	22	21	21	18	22	24	22	20	17	19	19	22

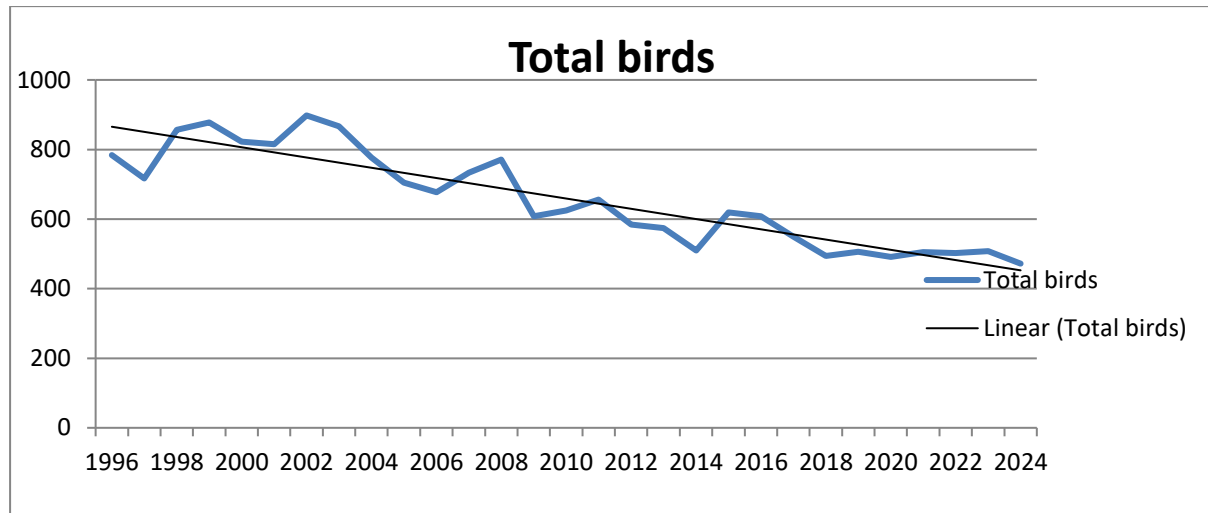
Appendix C3 Manor Road garden

A tick indicates that the species was present either in the garden or flying over.

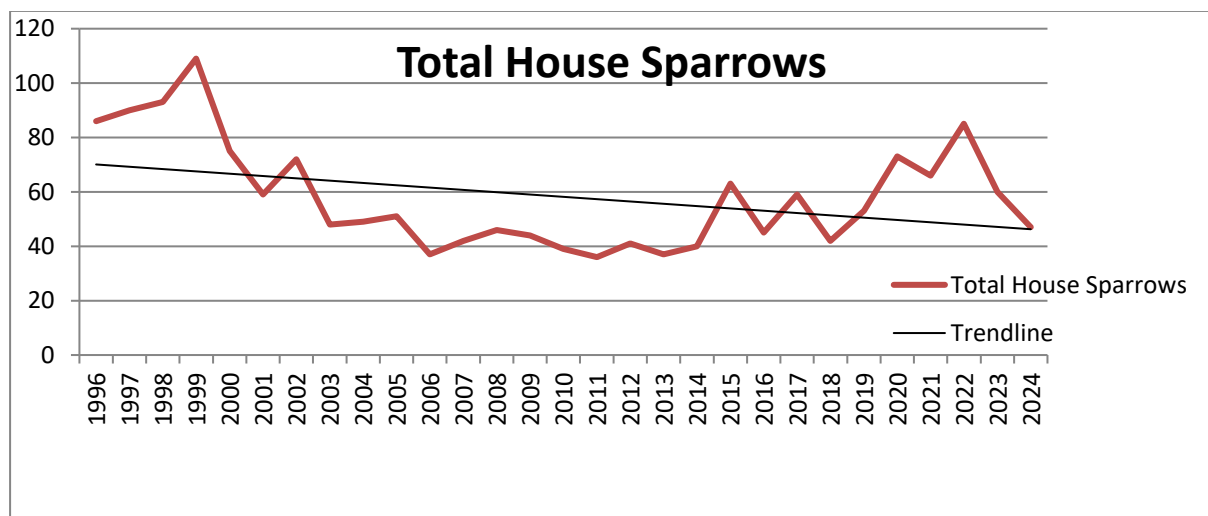
Species	Jan	Feb	Apr	May	June	July	Aug	Sep	Oct	Nov	Dec
Barn Owl									Y	Y	
Blackbird	Y	Y	Y	Y	Y	Y	Y	Y	Y	Y	Y
Blackcap	Y										Y
Black-headed Gull										Y	Y
Blue Tit	Y	Y	Y	Y	Y	Y	Y	Y	Y	Y	Y
Buzzard	Y	Y	Y	Y					Y	Y	Y
Carrion Crow	Y	Y	Y	Y	Y	Y	Y	Y	Y	Y	Y
Chaffinch	Y	Y							Y	Y	Y
Chiffchaff			Y								
Coal Tit	Y	Y							Y	Y	Y
Collared Dove											Y
Dunnock	Y	Y	Y	Y		Y	Y		Y	Y	Y
Feral Pigeon	Y	Y	Y	Y	Y	Y			Y		Y
Goldfinch		Y	Y							Y	Y
Great Spotted Woodpecker	Y			Y							
Great Tit	Y	Y	Y	Y	Y	Y	Y	Y	Y	Y	Y
Green Woodpecker				Y		Y					
Grey Heron											
Herring Gull	Y	Y	Y		Y	Y			Y	Y	Y
House Sparrow	Y	Y	Y	Y	Y	Y	Y	Y	Y	Y	Y
Jackdaw	Y	Y	Y	Y	Y	Y	Y	Y	Y	Y	Y
Long-tailed Tit	Y	Y									Y
Magpie	Y	Y	Y	Y	Y	Y	Y	Y	Y	Y	Y
Pheasant	Y	Y	Y	Y	Y	Y			Y	Y	Y
Pied Wagtail	Y	Y							Y	Y	
Raven					Y						
Robin	Y	Y	Y	Y	Y	Y	Y	Y	Y	Y	Y
Rook					Y	Y				Y	
Song Thrush										Y	
Sparrowhawk			Y								
Starling	Y	Y	Y	Y	Y	Y	Y	Y	Y	Y	Y
Swift						Y					
Tawny Owl	Y	Y					Y	Y	Y	Y	Y
Woodpigeon	Y	Y		Y	Y	Y	Y	Y	Y	Y	Y
Wren	Y	Y	Y	Y	Y	Y	Y			Y	Y

Appendix C4 Analysis of breeding birds in central Keynsham

Surveys of birds counted in a one kilometre square in central Keynsham since 1996 for the British Trust for Ornithology and undertaken by the same recorder have been analysed. The square has a mixture of built up parts and the Memorial Park. This graph shows accumulated totals of all birds counted during the breeding season between April and June. Sixty-two species have been seen over this period but many will not have actually bred in the area. The trendline shows that there has been a significant decline over this period.



House Sparrows have been looked at in more detail. The trend is still down.



Appendix D Map of the Keynsham area

The area covered by this report is within the solid line.

