

KEYNSHAM WILDLIFE

2023

Compiled by John Aldridge



Canary-shouldered Thorn, Handel Road, 25th August 2023



**£1.50 for
Avon Wildlife
Trust**

INTRODUCTION

This is the thirty-seventh annual report on our local natural history and is aimed primarily at members of the Keynsham group of the Avon Wildlife Trust and other local naturalists. A customary word of caution has to be added to state that, although they are believed to be accurate, the following notes have not been subjected to independent scrutiny. The format has changed little over the years. The graphs that were first included in 2019 have been updated to include 2023. Some locations appear many times within the report including gardens; records from elsewhere in the area have the potential to widen the report so please look at what is around and record what you see.

A map of the area that this report is based upon can be found in Appendix D.

BIRDS

Appendix A1 shows the results of Breeding Birds surveys, the results of which were fed into national and local databases. Appendices B1 to B3 are the continuation of winter bird surveys, the results of which were fed into a county survey. Appendix C1 shows information from a garden in Park Road and Appendix C2 information in or over a Balmoral Road garden. Appendix C3 shows information from a garden in Manor Road but not the adjacent woodland. Appendix C4 shows a graph created from data gleaned over a period of 28 years during a breeding birds survey organised by the British Trust for Ornithology (BTO). Results for 2023 are in Appendix A1; these plus previous years' totals have been accumulated into a single chart by simply totalling all birds seen on both spring counts. This one kilometre square consists of two walks one of which is along roads and the other mainly through the Memorial Park. The surveys have been undertaken by the same person over the same route each year so provide a stable base. The graph shows a clear decline over this period but no attempt has yet been made to examine the data by species except for House Sparrow.

Water birds

Little Grebe

Just two reports. One on 11th February along the Swineford stretch of the River Avon and another on New Year's Eve along the Hanham stretch.

Great Crested Grebe

Two on Holm Mead on 3rd April, our first for 12 years.

Diver

A bizarre report of an unspecified diver on 31st October. Although seen over Saltford, its flight suggested that it would pass over Keynsham as it was flying fast and direct. A first for our area, of course.

Cormorant

Seen in all months except June, July and August. Highest counts were six along the Hanham stretch of the River Avon on 27th February and along the Swineford stretch on 21st November. The Memorial Park hosted birds in January, February and December. Away from the rivers, one over the town on 13th March, another over Manor Road in March, three over the High Street on 7th October and four over Balmoral Road on 21st October. One over Queen Charlton on 15th April.

Little Egret

Just two sightings. One over Manor Road in February and one at Dapps Hill on 3rd March.

Grey Heron

Thirty-seven reports of one or two birds except for three in the Mill Grounds on 1st April. Many were along the River Avon and its immediate vicinity. The Memorial Park is a good

place to see them as they were noted in eight months. Elsewhere, one flew over Waitrose on 26th January, over Balmoral Road on 18th June and Stockwood Vale in June and July.

Night Heron

At first light on 9th November. It came from the direction of Stidham Farm, which has prime foraging habitat, and headed towards Newton Park. Although a scarce bird in the UK, this is the third in our area, the previous two were a long time ago in 1986 and 1987.

Great White Egret

One flew low to the south near Boyd Bridge on 17th November.

Pink-footed Goose

One on the floodwater near Boyd Bridge on 4th April. Although it seemed to be wild, it is more likely to be an escape. A first for our area!

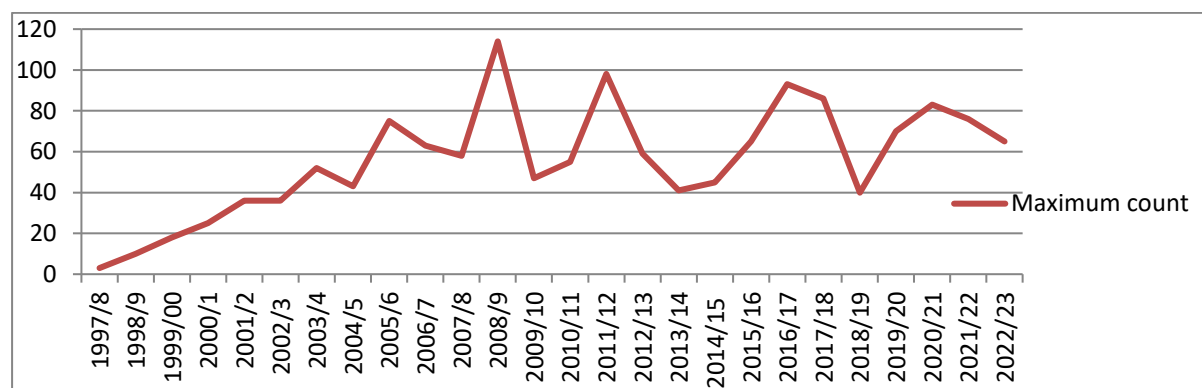
Mute Swan

Nested in the marina where a pair with three cygnets were seen on 22nd June. The family was still together on 4th September. Seven flew over Pixash Lane on 23rd January, nine were counted along the Swineford stretch of the River Avon on 27th January and 13 in the same area on 11th December. One passed over the town on 21st August.

Canada Goose

Avon Valley Country Park and the River Avon that runs past was the stronghold for this species as usual. However, the pattern was not the same as in recent years. In the first winter period the highest count was 65 on 11th February. In the second winter period 13 were seen in the sewage works area on 23rd December but other counts were even lower. There were five on Somerdale Hams on 23rd January. Three flew over the town on 4th March, two on 4th April, five the following day and 12 over Manor Road on 14th June.

The maximum count of the birds by the River Avon during recent winters is as follows:



Mandarin Duck

A male near Boyd Bridge on 2nd April and two in the same area two days later.

Shoveler

Three upstream from Boyd Bridge on 7th September.

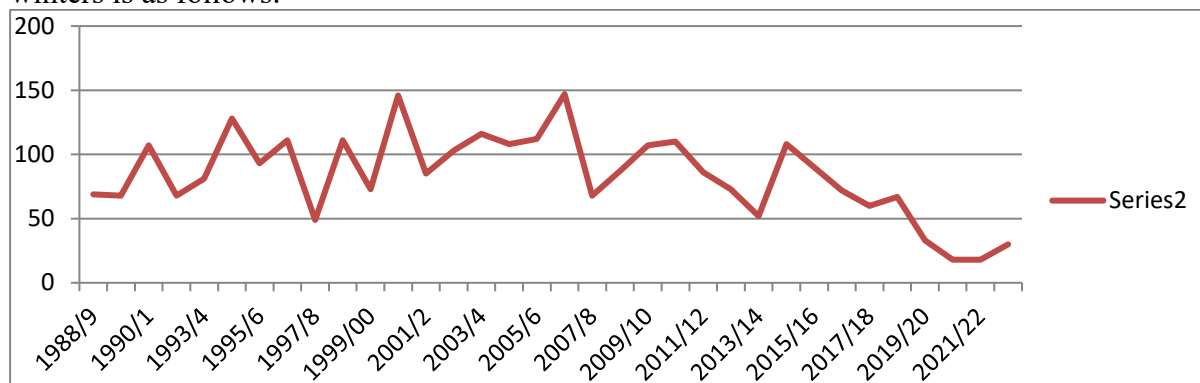
Wigeon

Eight to the north over Boyd Bridge on 17th March, and one or two heading in the same direction in the same place on 22nd November.

Mallard

Present all year in the Memorial Park. The highest count was lower than 2022 at 64 on 9th August; although numbers are usually significant, just eight were seen on 14th January and two on 5th December. Thirty near the sewage works on 17th December suggests a local movement between the two sites. Three families were noted in the marina on 5th June but only three, two and two young. Elsewhere, 16 in the Mill Grounds on 14th January.

The following graph shows the maximum count of birds on the River Avon during recent winters is as follows:



Tufted Duck

Eight on floodwater at Holm Mead on 3rd April and two flew downstream from Boyd Bridge on 7th June.

Goosander

Just a pair along the Swineford stretch of the River Avon on 27th January.

Birds of Prey

Red Kite

Following an encouraging year in 2022 when 20 were seen, 2023 produced just one less but anecdotal reports suggest that there were more. Most were in March and spread across the area. All were singles except for two on 27th February.

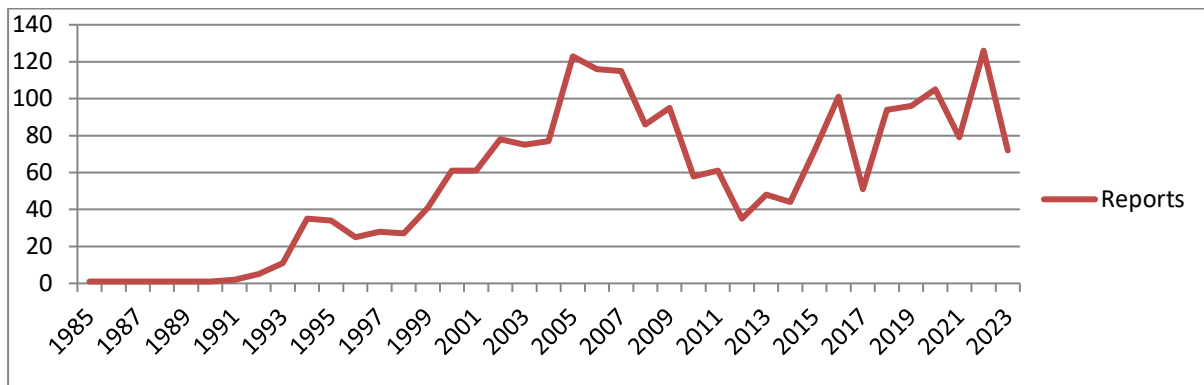
Sparrowhawk

There were 38 reports (35 in 2022) spread across the year. All were of single birds except for two on 27th February. Most were seen over the town although Stockwood Vale hosted them on a few occasions. One sat on a fence eyeing up the feeders in Park Road on 4th January. Another caught a Goldfinch and there were instances of birds perched on garden trees.

Buzzard

Seventy-two reports look like a good number although 2022 produced 126. Nevertheless, this is our commonest raptor. A field off Manor Road was regularly used and they were often seen in Stockwood Vale. Six were noted moving south over the town on 21st April. Other notable counts were four circling high over West View Road on 2nd May and four over the sewage works on 21st October. Three over Charlton Fields were notable and the rest were in ones or twos.

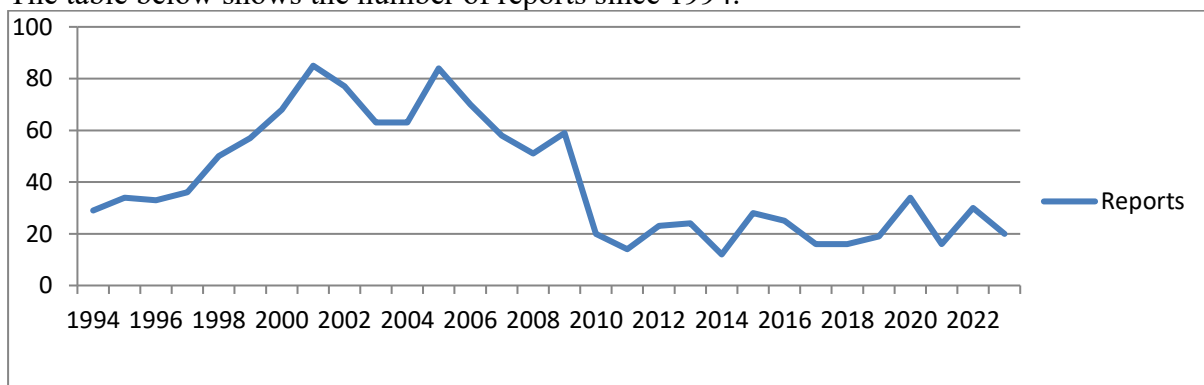
The following table shows the number of reports since 1985.



Kestrel

Twenty records this year is not a very good number. Perhaps more time spent at Charlton Fields and Queen Charlton would produce a higher figure. Somerdale produced three of the reports and Stockwood Vale six. Others were along the Wellsway, Manor Road, Durley Hill, Redlynch Lane and the top of Charlton Road.

The table below shows the number of reports since 1994.



Merlin

A female just east of Boyd Bridge on 18th October.

Hobby

Just one during a Breeding Bird Survey on 31st May over Park Road.

Peregrine

Just three reports. One high over West View Road on 2nd May, one at Hicks Gate on 25th November and two over Cleeve Wood on 8th December that then settled high on a pylon.

Partridges and Pheasants

Grey Partridge

Up to four seen around Manor Road on several occasions had probably been recently released as happened from Kelston in 2022.

Red-legged Partridge

Four along the Swineford stretch of the River Avon on 21st November.

Pheasant

Noted very regularly in Stockwood Vale and by Manor Road and occasionally elsewhere in the countryside. No significant counts this year.

Rails

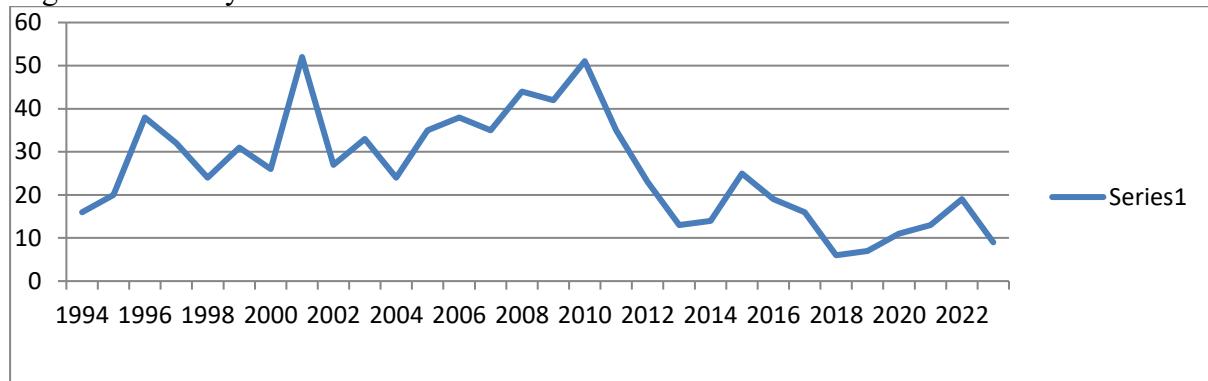
Water Rail

Birds have had extended winter stays by the pond in the Memorial Park a few times. There was one this year but it hid for most of the time. Noted in February and March.

Moorhen

The highest count along the Swineford stretch of the River Avon was very low. In the first winter period it was just nine and only three in the second. Present in the Memorial Park all year, peaking at six in December. Elsewhere, three in the Mill Grounds on 27th July and one took up residence in Stockwood Vale in June.

Highest counts by the River Avon since 1994 are as follows:.



Wading birds

Lapwing

Floodwater in January attracted two significant flocks. A flock of 120 circled around the sewage works on 30th and possibly the same (counted as 90 this time) at Holm Mead. A single bird by the River Avon, Hanham direction on 24th. Later in the year, two near the sewage works on 10th December.

Curlew

One flew west from the direction of Long Wood in Saltford on 9th April and must have entered Keynsham airspace.

Woodcock

One by Durley Lane in the wood between the bypass and the trainline on 16th December.

Gulls

Black-headed Gull

Opportunities provided by receding floodwater in January produced the largest number. One thousand were estimated along the Swineford stretch of the River Avon and 300 at Somerdale, all on 2nd January. Sixty on pools at Somerdale on 9th April is unusual for April, and they were noted over Balmoral Road up to the end of the month. Not noted again until 21st August. Counts increased again in November when there were sixty along the Hanham stretch of the River Avon on 17th. Broadmead Lane and the sewage works area held constant flocks of 200 to 250 in December. A bird carrying a metal ring on its left leg appeared in a Handel Road garden on 5th and 6th February; this may well be the same bird that has visited this garden in most years since 2014. Birds often use the pond in the Memorial Park bathing and waiting for food.

Common Gull

740 on floodwater at Somerdale on 7th January was a good count that far exceeded any others. The next highest count was 100 by the sewage works on 16th December. Twenty appeared at Charlton Fields on 3rd December.

Lesser Black-backed Gull

Counts were not very high, particularly when compared to the peaks of the previous two species. Fifty at Somerdale on 7th January and 20 at Queen Charlton on 15th April were the best. Otherwise a few were around for most of the year. The 2020, 2021 and 2022 reports included a ringed bird (F900 black) in Handel Road. It came back again in 2023, this time on 11th June, and 9th, 15th and 22nd August.

Herring Gull

Although always with us across the area, they are rarely noticed. Fifty resting on fields at Queen Charlton on 2nd October was interesting, and 21 by the sewage works on 3rd December was noticeable.

Unidentified gulls

A flock of 500 of mixed species on flooded fields at Somerdale on 6th December. No attempt was made to count each species.

Cuckoo

One in willows just upstream of Boyd Bridge on 11th June and another heard from Manor Road in June.

Pigeons

Feral Pigeon

During survey work 35 were counted in the one kilometre square around central Keynsham on 19th February and 76 on 2nd December. Overlooked for most of the year.

Stock Dove

Seen throughout the year in Stockwood Vale. The highest count was eight east of Chewton Keynsham on 26th January. Also noted in the Mill Grounds, Manor Road Community Woodland, near the sewage works and Charlton Fields.

Woodpigeon

A high count of 150 around Manor Road Community Woodland on 17th November. Other counts were somewhat lower but worth noting. Thirty-two in central Keynsham during survey work on 19th February and 58 on 16th April in a spring survey. 35 at the top of Wellsway on 17th April. Garden counts in The Meadows showed that birds were present throughout the year, with a high count of 12 in August.

Collared Dove

A widespread species but rarely in significant numbers. Noted in most surveys. Counts of twelve in Balmoral Road on 8th and 23rd December were higher than usual.

Owls

Barn Owl

One in fields by Meadow Wood near Bitton on 25th March. Heard from Manor Road in August and October.

Tawny Owl

Frequently encountered in Stockwood Vale and Manor Road throughout the year. Four were reported from Manor Road on 14th June. Present in the cemetery on 16th September and nearby at the bottom of Durley Lane on 28th October.

Kingfishers

Kingfisher

Thirty-five reports of which 28 were in and around the Memorial Park and seen by many people. Four dates from Keynsham lock, two at the sewage works and one at Somerdale. All single birds except for two on three occasions.

Woodpeckers

Great Spotted Woodpecker

Well represented in the area with 44 reports. Drumming first heard in Cleeve Wood on 24th January, and later along the Swineford stretch of the River Avon, Manor Road Community Woodland, Stockwood Vale and Somerdale. Also noted in the Memorial Park, Keynsham lock, Abbey Park, Chewton Keynsham, the sewage works and Durley Lane. Seen throughout the year in Stockwood Vale.

Green Woodpecker

Thirty-nine scattered reports. Seen or heard in gardens in Stockwood Vale, Manor Road, Balmoral Road and Handel Road. Also noted along both stretches of the River Avon, Queen Charlton, Chewton Keynsham, the Memorial Park and Somerdale

Larks

Skylark

Song heard at Somerdale in April and again in November. Unusually, song was heard from Park Road on 10th June. Winter birds noted along the Swineford stretch of the River Avon in February, March and November. A flock built up to 30 birds near the sewage works in December. Nine at Queen Charlton on 15th April.

Swifts and hirundines

Swift

Not seen until 30th April. Numbers were low throughout the season; eleven over Park Road on 13th May was an exception as were 14 over Queen Charlton on 7th July. They may well have nested in West View Road. Last noted on 11th August over Manor Road.

The following table shows earliest dates since 2005:

2005	2006	2007	2008	2009	2010	2011	2012	2013	2014	2015	2016	2017	2018	2019	2020	2021	2022	2023
24/4	21/4	23/4	26/4	25/4	18/4	21/4	29/4	26/4	4/5	2/5	3/5	19/4	3/5	30/4	2/5	4/5	8/5	30/4

Sand Martin

Only noted at the sewage works on 12th and 25th April, ten on both occasions.

Swallow

An early bird at the sewage works on 3rd April, and 30 there on 12th. April birds also over Wellsway, Somerdale, Queen Charlton, Warwick Road, Balmoral Road and the Swineford stretch of the River Avon. Twenty at Somerdale on 16th August and a big flock of between 100 and 200 in the same area on 8th September.

House Martin

The season started with a bang when 120 recent arrivals were seen feeding over the sewage works on 12th April. Seventy were counted the following day and 200 on 25th April. There were about 18 nests in Queens Road. Last seen over the pitches at Somerdale on 8th September.

Pipits and Wagtails

Meadow Pipit

Infrequently found in the first winter period; 30 at Somerdale on 23rd January and two by the

River Avon four days later. From 21st October they were often seen around the sewage works and nearby stubble fields with a maximum count of ten. Twenty-five were noted at the marina on 29th December.

Grey Wagtail

One or two noted many times in the Memorial Park in every month except June and September. Keynsham lock was another location where they were found on a few occasions and, from October, were often seen near the sewage works. Elsewhere, seen at Tesco's, Market Walk, Durley Lane and in a Handel Road garden.

Pied Wagtail

Floodwater at the start of the year produced 33 at Somerdale and 36 along the Swineford stretch of the River Avon on 2nd January. On 13th the Somerdale flock increased to 80. Numbers increased again towards the end of the year when 100 were estimated near the sewage works on 17th and 26th December. Somerdale produced 25 on 14th December. Also noted in gardens in Stockwood Vale, the Meadows and Manor Road.

Wrens, Dippers and Accentors

Wren

Winter bird surveys revealed eight by the River Avon in the first winter period and three in the second. In central Keynsham there were six in the first winter period but none in the second. Breeding bird surveys produced 11 in central Keynsham and four at the top of Wellsway. Also noted in Manor Road, Stockwood Vale, Park Road and Handel Road gardens.

Dunnock

Winter bird surveys produced three by the River Avon in the first winter period and two in the second. In central Keynsham the figures were seven and one respectively. Breeding bird surveys revealed two in central Keynsham and five at the top of Wellsway. These counts were significantly lower than 2022 but birds were often noted elsewhere.

Thrushes

Robin

Winter bird surveys produced eleven by the River Avon in the first winter period and seven in the second. In central Keynsham the figures were 19 and two. Breeding bird surveys produced 21 in central Keynsham and seven at the top of Wellsway. A widespread species. Fledged young recorded in Stockwood Vale.

Black Redstart

One at Somerdale on 18th January.

Redstart

One near Boyd Bridge on 13th April. Always a delight to see.

Whinchat

One in the horse paddock near Manor Road Community Woodland on 5th May, our first since 2017.

Wheatear

Two at Queen Charlton on 25th April was the only report.

Stonechat

At the start of the year, one or two at Somerdale in January, and two south of Queen Charlton on 14th March. Later in the year, two at Somerdale on 17th October. One by the sewage works

on 21st October was present until 10th December (unless birds came and went).

Song Thrush

Not recorded many times this year but still widespread. Noted in the Memorial Park, along the Swineford stretch of the River Avon, West View Road, Manor Road Community Woodland, Somerdale, Charlton Fields, the sewage works, Stockwood Vale, Durley Lane and The Meadows. Highest count was three.

Redwing

A good start to the year with 40 at Keynsham lock on 22nd January and 58 along the Swineford stretch of the River Avon on 27th. Last overwintering birds were six in the Memorial Park on 12th March. The first returning birds were heard over the sewage works on 5th October. Up to 20 were noted at various places to the end of the year, the exception being 100 in Manor Road Community Woodland on Christmas Eve. Noted in West View Road, Park Road and Manor Road gardens.

Mistle Thrush

Just four reports. Single birds in Stockwood Vale, Queen Charlton, the top of Wellsway and the sewage works.

Fieldfare

In the first winter period, seven by the Swineford stretch of the River Avon on 27th January and 40 at Queen Charlton on 23rd February. Noted several times near the sewage works in December, peaking at 50 on 17th. Also noted in Manor Road Community Woodland, Stockwood Vale and by the marina.

Ring Ouzel

One in the boundary hedge between Saltford and Keynsham on 11th October.

Blackbird

Winter bird surveys produced two by the River Avon in the first winter period and four in the second. In central Keynsham the figures were four in the first period and five in the second. Breeding bird surveys produced nine in central Keynsham and 11 at the top of Wellsway. Unsurprisingly, seen in many other places but the only recorded breeding was in Stockwood Vale.

Warblers

Chiffchaff

Only noted once in the first winter period; this was in The Meadows. There was clearly an influx from 18th March when 17 were heard in Manor Road Community Woodland, and five appeared in a local garden the following day. The following three days produced birds by the Ambulance Station, St Clements Road, Handel Road, Balmoral Road, by the cycle track and along the Swineford stretch of the River Avon. Gardens were still used up to 6th April. Many birds were seen in various locations throughout the rest of the spring and summer and the final autumn one may have been on 22nd September although one in a Handel Road garden on 27th October may well be a departing bird. The sewage works became a haven from 21st October to the end of the year with a peak of six on Boxing Day.

Willow Warbler

The first two appeared in a town garden on 30th March. Heard in Manor Road Community Woodland on 7th April, two at the sewage works on 12th and one in Handel Road on 23rd. No subsequent reports.

Reed Warbler

One by the River Avon on 30th April.

Blackcap

In the first winter period they were seen in Handel Road, Balmoral Road, West View Road and Stockwood Vale. The start of spring migration is not easy to spot but may have been 19th March. They were then found in many locations including a singing bird at Waitrose on 16th June. Two in a Handel Road garden on 18th November signalled the start of the winter incomers. Other gardens hosted them in December including The Meadows.

Garden Warbler

One just downstream of Boyd Bridge on 3rd August.

Whitethroat

Two at Charlton Fields and one at the sewage works on 25th April, then one in Manor Road Community Woodland and by the River Avon on 30th. Two at the sewage works on 1st May, then occasional reports from Somerdale and Queen Charlton.

'Crests'**Goldcrest**

Plenty of reports but for no obvious reason, none between 9th April and 21st October. Five around Durley Lane on 16th December was the highest number. Also noted at the marina, Somerdale, West View Road, Stockwood Vale, the sewage works, the Memorial Park, Manor Road Community Woodland and Handel Road.

Tits**Long-tailed Tit**

There was a nice series of records from the Memorial Park with seven on 13th July, 16 on 1st August, eight on 1st November, 26 on 6th November, eight on 18th November and 25 on 4th December. Manor Road Community Woodland was another good spot for them in December; 11 on 3rd, 15 on 5th and 40 on 24th. In January ten or more came to a feeder in Stockwood Vale. Various other reports including four in The Meadows in October.

Blue Tit

Winter bird surveys revealed five by the River Avon in the first winter period and seven in the second. In central Keynsham the figures were seven and two respectively. Breeding bird surveys revealed eight in central Keynsham and only one at the top of Wellsway. Often seen elsewhere including seven in the Meadows in October and 12 around a large feeder in Stockwood Vale in December.

Great Tit

A breeding bird survey revealed five in central Keynsham and four at the top end of Wellsway. Often overlooked but 15 in Manor Woods on 21st December was exceptional.

Coal Tit

Seen in Stockwood Vale in seven months of the year. One or two by the River Avon, the entrance to Somerdale, Manor Road Community Woodland, Durley Lane and a Manor Road garden.

Nuthatches and Treecreepers**Treecreeper**

One near Keynsham lock on 26th January and one singing along the Swineford stretch of the River Avon on 21st February. The other reports were from the Memorial Park in January, March, May, July, August and November. Are they nesting there?

Nuthatch

One near the marina on 18th January, and along the cycle track on 2nd March and 10th August.

Crows

Magpie

Winter bird surveys revealed 14 by the River Avon in the first winter period and eight in the second. In central Keynsham the figures were 28 and seven respectively. Breeding bird surveys revealed eight in central Keynsham and 18 at the top of Wellsway. Counts of 13 in the Mill Grounds on 1st April and 14 on a Park Road rooftop on the evening of 14th September were significant.

Ring-necked Parakeet

Noted somewhere in Keynsham on 8th, 9th and 14th September, and in Charlton Park later in the month. One in Charlton Road on Christmas Day.

Jay

As in 2022, found in Stockwood Vale in all months of the year. Manor Road Community Woodland produced four on 18th March. There were 20 other reports most of which were in October from Keynsham lock, Somerdale, Queen Charlton, Handel Road, the sewage works, the Memorial Park, Durley Lane and gardens in The Meadows and Manor Road.

Jackdaw

Winter bird surveys revealed a huge count of 233 by the River Avon in the first winter period and a more normal 27 in the second. In central Keynsham the figures were 39 and 50 respectively. Breeding bird surveys revealed 24 in central Keynsham and 14 at the top of Wellsway. Evening flocks in winter are often encountered. 172 were counted going to roost (probably in Cleeve Wood) on 6th February and 100 on 22nd March. 100 circling around on 28th February were doubtless going to do the same at some point in the evening. Thirteen in a single tree in West View Road was interesting; they are often seen in that road and probably breed on rooftops.

Rook

The Manor Road Community Woodland rookery was not counted this year. There were five nests in the Memorial Park and nine in Cleeve Wood. Thirteen in the Meadows in September was interesting and lower counts there at other times.

Carrion Crow

Winter bird surveys revealed 275 (the same day as the Jackdaws) by the River Avon in the first winter period and 96 in the second. In central Keynsham the figures were 11 and seven respectively. Breeding bird surveys revealed 19 in central Keynsham and 11 at the top of Wellsway. Other significant counts were 89 on sodden fields at Somerdale on 7th January and 60 in similar conditions on 13th November. Also ten or more noisy birds in a West View Road garden on 20th November, 33 in the Memorial Park on 1st November and a pre roost gathering in Charlton Park in September.

Raven

Twenty-nine reports this year. They probably nested in Chewton Place this year as young were heard calling from a nest on 1st April. Five over Manor Road on 3rd September was the highest count, the same day that they appeared over Balmoral Road and Handel Road. Also noted at Somerdale, Manor Road Community Woodland, Queen Charlton, the sewage works and near the marina.

Mixed corvids

The partly flooded fields at Somerdale produced 270 corvids on 2nd January but breaking them down to species was not practically possible.

Starling

Winter bird surveys revealed 51 by the River Avon during the first winter bird surveys but none in the second. In central Keynsham the figures in the two winter periods were 51 in the first and 22 in the second. Breeding bird surveys revealed 23 in central Keynsham and ten at the top end of Wellsway. Over 50 gathered in a Birch tree in West View Road on 11th June. Over 100 were noted around Handel Road on 18th October, the same day that an influx occurred in other parts of Avon. 200 appeared around another garden on 12th November. There were good counts around The Meadows in most months with a maximum of 25 in July.

Sparrows

House Sparrow

Winter bird surveys revealed 44 in central Keynsham in the first winter period and 14 in the second. Breeding bird surveys revealed 43 in central Keynsham and five at the top end of Wellsway. Two thriving colonies in West View Road were within the central Keynsham survey.

Finches

Chaffinch

Rather a poor year in our area. Complete absence in West View Road. Fifteen at the sewage works on 16th and 23rd December were the best counts. The RSPB big garden birdwatch produced six in Stockwood Vale on 27th January.

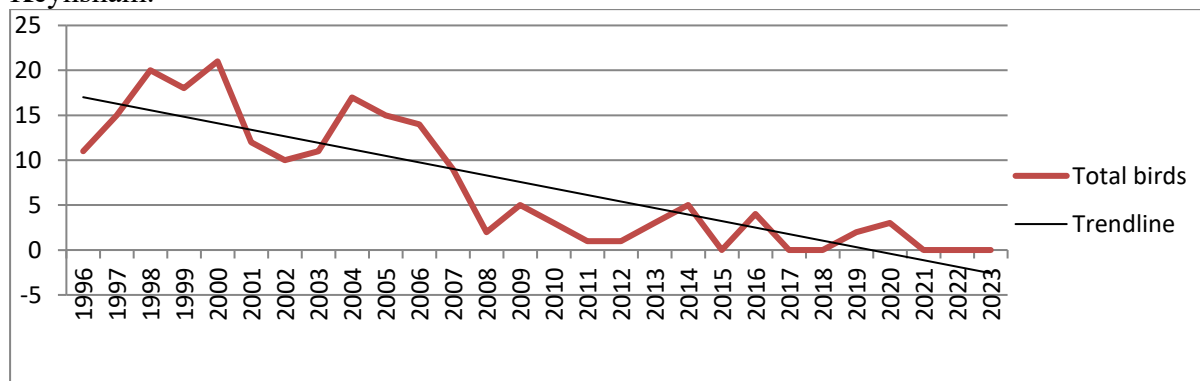
Bullfinch

A little better than the past two years, encountered on seven days in Manor Road Community Woodland, Stockwood Vale, Queen Charlton and along the cycle track.

Greenfinch

Noted in eleven months of the year in Stockwood Vale. Eight in Manor Road Community Woodland on 3rd December was reasonable; a few noted by the marina, Queen Charlton, Charlton Fields, the Mill Grounds, Park Road and the sewage works. None seen in West View Road this year.

The following graph shows the decline as measured by the breeding bird survey in central Keynsham.



Crossbill

Four of an unidentified species just east of Boyd Bridge on 29th October.

Goldfinch

Winter bird surveys revealed 82 by the River Avon in the first winter period and 51 in the second. None seen in central Keynsham. Breeding bird surveys revealed seven in central Keynsham and six at the top end of Wellsway. The Meadows managed 14 in December and up to 30 were noted in other gardens but generally, garden records were low. One hit a window in Stockwood Vale and failed to recover.

Siskin

Three records. Five by Durley Lane on 28th October, four along the Swineford stretch of the River Avon on 11th December and ten at Somerdale on 15th.

Linnet

A very good showing around the sewage works towards the end of the year. Eight noted on 21st October, then 15 on 27th, 40 on 9th December, 50 on 10th and still 50 on 23rd. Away from this area, ten over the town on 27th February, two at Charlton Fields on 25th April and 14 at Queen Charlton on 7th July.

Buntings

Corn Bunting

Encountered for the second year running! One over Boyd Bridge on 7th November, the same location as 2022.

Yellowhammer

Only two records, both at Queen Charlton; 15th April and 7th July.

Reed Bunting

The sewage works produced one on 22nd October and 17th December, and two on Boxing Day. One at Somerdale on 11th May and Durley Lane on 28th October.

BUTTERFLIES

Quite a few of the following sightings cannot be attributed to a particular place; most are from gardens in the town.

Skippers

Small Skipper

Recorded between 21st June and 27th July along the Swineford stretch of the River Avon, Somerdale and a Handel Road garden. A skipper in West View Road on 7th July was either this species or a Large Skipper.

Large Skipper

Seen in Manor Road Community Woodland, Somerdale and along the Swineford stretch of the River Avon (six on 16th June).

Whites

Brimstone

First seen in Park Road and Manor Road on 17th March, and Charlton Park the following day. A female was watched laying eggs on Alder Buckthorn in West View Road on 28th April and again on 22nd May. One on 12th June is difficult to pin down as being one of last year's or a fresh one from 2023. Four in a garden on 17th July was a good count. Noted in Balmoral Road, the entrance to Somerdale, by the River Avon, Temple Street, the railway station and Stockwood Vale. Last seen on 8th October.

Orange Tip

First noted by the sewage works on 20th April and again on 1st May. A male and female appeared in a West View Road garden on 5th May. Also seen in Handel Road, Stockwood

Vale and Somerdale.

Large White

Lots of reports from various gardens, the highest count being five on 6th August. Twelve were seen in the Memorial Park on 25th July and nine in Manor Road Community Woodland on 1st August. Also noted at Somerdale and Queen Charlton. Last seen on 4th October.

Small White

As with the previous species, many garden records from 8th April. Also at Somerdale, by the River Avon, the sewage works, Chewton Keynsham and Stockwood Vale. Last seen on 22nd October.

Green-veined White

Only scattered reports of single butterflies. At Somerdale, the Memorial Park, Chewton Keynsham, by the River Avon, the stoney lane that runs down to Chewton Place and a few gardens.

Blues

Brown Argus

One along the Swineford stretch of the River Avon on 5th June, in Manor Road Community Woodland on 27th July and in Stockwood Vale on 4th August.

Common Blue

Noted between 17th July and 10th August. Seven were in Manor Road Community Woodland on 27th July. Also noted in Stockwood Vale and various gardens.

Small Copper

One in the Mill Grounds on 11th June, two in Manor Road Community Woodland on 1st August and three in different gardens.

Holly Blue

Forty-eight records. The first generation started on 9th April (as in 2022) in gardens in Park Road and Handel Road. West View Road joined in on 15th April where there were many sightings until 19th May. The final one of this generation was probably on 30th May (29th in 2022) with the first of the second generation appearing on 24th June. They continued to be seen up to 1st October, which is our latest ever date. Locations were Chewton Keynsham, Somerdale, Stockwood Vale, the railway station, near Lays Farm, the stoney lane that runs down to Chewton Place, Manor Road Community Woodland and various gardens.

Nymphalids

Small Tortoiseshell

Twenty-three reports which is similar to 2022, and only seen in ones or twos between 7th April and 30th October. Locations were the Memorial Park, Somerdale, the sewage works, the Mill Grounds, by the River Avon, Stockwood Vale and gardens in Balmoral Road, West View Road and Handel Road.

Peacock

A nice spread of records between 7th April and 20th October. The gap between 22nd May and 7th July probably separates the two generations. Eight were counted at Somerdale on 23rd July, ten in a garden on 3rd August and 12 in another garden three days later. Away from gardens, they were noted by the River Avon, the sewage works, Chewton Keynsham and Manor Road Community Woodland.

Comma

The season got under way on 24th March in a West View Road garden. A few overwintering ones were noted up to 13th April and then again from 22nd June when the next generation got under way. There were two interesting counts; 11 at Somerdale on 23rd July and 7 at Chewton Keynsham on 27th. Most other reports were from gardens (up to 15th October).

Red Admiral

Recorded 72 times, far more than 2022. The first flew through a Handel Road garden on 19th February and must have overwintered. It was over two months to the next one which was at Somerdale on 13th April, then 11th May and 11th June. Numbers really picked up from 2nd July. There were three reports in September, nine in October and four in November (up to 20th). Twenty at Somerdale on 23rd July was our highest count in a single location since 1996. Locations were the sewage works, Abbots Wood, Avon Close, Charlton Park, Chewton Keynsham, the cycle track, Dapps Hill, the Memorial Park, the Mill Grounds, Stockwood Vale and West View Road.

Painted Lady

Just the one. It was in a Balmoral Road garden on 21st June.

Browns

Ringlet

Found between 24th June and 3rd August in the Memorial Park, Manor Road Community Woodland and a few gardens.

Speckled Wood

Lots of records between 8th April and 9th October. Twenty-nine were from a Handel Road garden and 12 from West View Road. There were nine in Manor Road Community Woodland on 4th June and along the stoney lane that runs down to Chewton Place on 27th July. Six by the entrance path to Somerdale on 13th July was also noteworthy. Others seen at the sewage works, by the River Avon, the Memorial Park, Chewton Keynsham, Queen Charlton, the cycle track and Stockwood Vale.

Meadow Brown

First seen along the Swineford stretch of the River Avon on 5th June. There were no actual significant counts although many were in Manor Road Community Woodland on 25th June. Also found at Somerdale, the stoney lane that runs down to Chewton Place, Chewton Keynsham, the Memorial Park and Stockwood Vale. Gardens are not really their prime habitat but quite a few were recorded in them including five in Handel Road. Last noted on 22nd August. One along the High Street on 27th June.

Marbled White

Two in Manor Road Community Woodland on 25th June.

Gatekeeper

Four at Somerdale on 23rd July. Eight in the Mill Grounds on 27th July and at Charlton Fields on 22nd August. Five in Manor Road Community Woodland and three in Chewton Keynsham on 1st August. Several gardens hosted a few.

MAMMALS

Badger

Regularly seen in a Stockwood Vale garden. There was evidence of this species in a Manor Road garden in May and a sett was found by the cycle track.

Roe Deer

Recorded on 24 occasions throughout the year, most of which were in Stockwood Vale as in 2022. A family of three plus two others seen in January and a big male with antlers in full velvet appeared there in February. Up to three in the fields by the Swineford stretch of the River Avon, one in a field by Manor Road on 12th May, Somerdale on 16th February, Queen Charlton on 2nd October and slots by the sewage works in April. One became the victim of a road traffic accident on the junction of Charlton Road and Queen Charlton in January.

Muntjac

All reports except one were in Stockwood Vale garden covering most of the year. Mostly singletons but a pair on 29th November and three in January. Slots by the sewage works in October suggested that they were also present there.

Fox

The trail camera that had been used in Handel Road since 2020 was switched on regularly resulting in one or two being recorded on 88 occasions. Up to five in Stockwood Vale throughout the year. An injured male was noticed on 10th November so a trap was set in an attempt to capture it but only succeeded and imprisoning a cat. Homeopathic treatment was attempted on a mangey Fox in February but it was difficult to determine whether or not this was working because of the other animals that were present. Also seen in a few other locations. Noted in Manor Road on a few occasions and often in Dunster Road. Others in Lays Drive, Rock Road, Coronation Avenue, West View Road and near the New Inn. Two played in Torridge Road on 12th December. One became a road traffic casualty on the bypass in May.

Hedgehog

The camera trap in Handel Road that recorded the Foxes also found Hedgehogs on 29 occasions (31 in 2022) between 13th April and 19th November; there were two on three nights. Up to four (feeding on peanuts on 2nd June) in Stockwood Vale between January and 6th November. Visited a West View Road garden on five occasions; a small one ran into a pond on 11th July, swam across and managed to get out again. One in Banwell Close during the year and a dead one on the Wellsway on 26th April.

Grey Squirrel

A Handel Road garden was once more home to squirrels throughout the year where they have a drey near the top of a Birch tree. Two were often seen and three on two occasions. Present in Stockwood Vale throughout the year. This is doubtless so in many other places but they are overlooked as they are so common. Actual records came from Balmoral Road, the cycle track, Manor Road Community Woodland and the Swineford stretch of the River Avon.

Mole

So often overlooked as they are rarely actually seen. Molehills were recorded in Manor Road Community Woodland, Somerdale and along the Swineford stretch of the River Avon. It is a matter of conjecture as to whether or not they have a method of surviving floodwater.

Brown Rat

Still present in the Memorial Park, perhaps because they like remains of food that is provided for the ducks. One scuttled along the bank of the Hanham stretch of the River Avon and a dead one along the cycle track. Noted in Stockwood Vale for most of the year.

Otter

Anecdotal information suggests that they are often around our area but rarely recorded. This year one was watched at close range along the Swineford stretch of the River Avon carrying a large fish on 21st February. Possible footprints noted along the Hanham stretch in April.

Rabbit

Seen in a field off Manor Road in January and June and Charlton Fields in August. A young rabbit was on a garden lawn in Stockwood Vale on 28th August.

FLORA

Very little recording took place this year so that results in a significant gap in this report once more.

Fox and Hounds Woodland

Lesser Celandine, Primrose, Snowdrop and Ivy Broomrape.

Manor Road Community Woodland

Marsh Marigold and Lesser Celandine from 13th February and **Primroses** from 26th. Fifteen **Scarlet Elf Cups** on 26th February.

Somerdale

Mistletoe, Common Toadflax, Narrow-leaved Everlasting Pea, Oxeye Daisy, Perforate St John's-wort, Purple-loosestrife, Tansy, Valerian, Cuckooflower, Yarrow and a Tare species. Flowering Rush on the edge of the River Avon could be seen from the Somerdale footpath.

Memorial Park

Two **Small Teasel, Winter Heliotrope** and **Common Toadflax. Himalayan Balsam** is becoming very dominant.

River Avon

Himalayan Balsam is increasing by the marina and adjacent car park. **Trifid Bur-marigold, White Water-lily and Yellow Water-lily** along the Swineford stretch and **Mistletoe** towards Hanham.

Elsewhere

A **Pyramidal Orchid** appeared in some long grass in a West View Road garden so perhaps had laid dormant for many years.

Three **Snake's-head Fritillaries** by the footpath off the Avenue had probably been discarded from a nearby garden.

Danish Scurvy-grass at the top of Wellsway. **Dark Mullein** in Chewton Keynsham. **Rue-leaved Saxifrage** on Bath Hill. **Tall Melilot** at Charlton Fields. **Water-plantain** in the Mill Grounds. **Woolly Thistle** at the top end of Stockwood Vale. **Yellow Water-lily** at Chewton Place.

MOTHS

The moth traps that have previously been operated in Handel Road and Balmoral Road were run again. Table 1 combines sightings from both sites. Scientific and common names are shown together with counts. No less than 8741 moths of 322 species were identified in 2023.

There were just four new species this year. These were:

Dewick's Plusia, a migrant first found in the Avon area in 2011. Several in Avon this year.

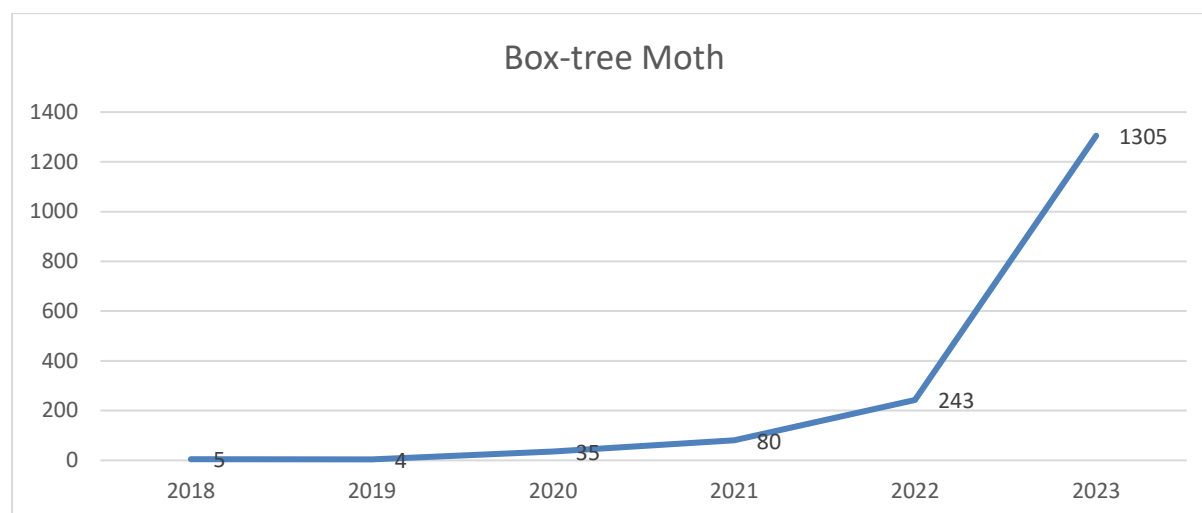
Toadflax Pug. Although widespread, has missed us until now.

White-point, a migrant first found in the Avon area in 2018 but now encountered occasionally.

Ypsolopha ustella. Only three previous Avon records.

The rise of **Box-tree moths** continues – 1306 were caught this year. Thirty-four were of the distinctive dark form. 11th September produced a phenomenal count of 250! A graph showing

the number trapped over the past six years:



Jersey Tigers are now becoming established after first appearing in 2011. Sixty-six were caught in 2023. A graph showing the number trapped since they were first recorded:

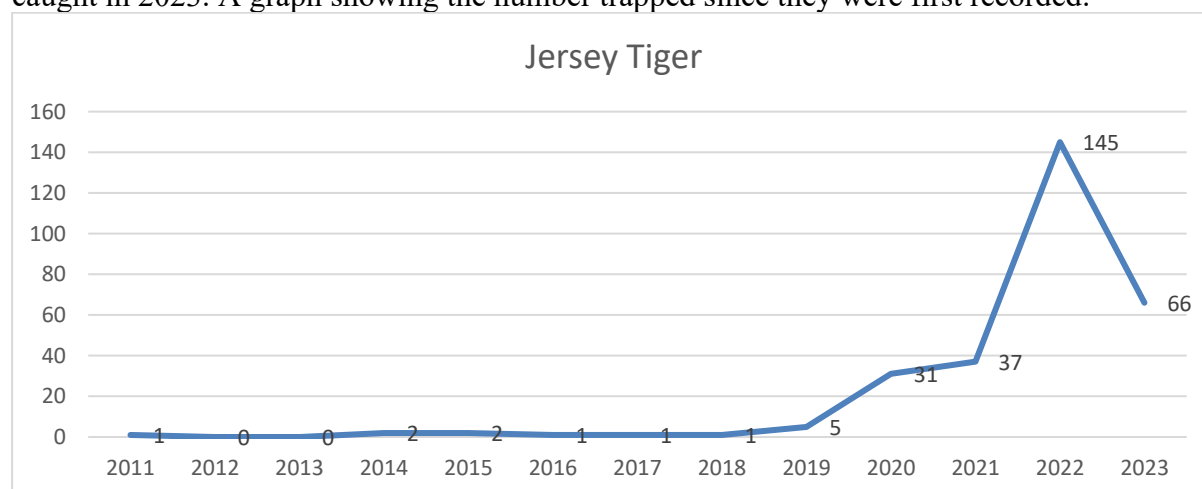


TABLE 1 – HANDEL ROAD and BALMORAL ROAD		
Common name	Scientific name	Count
Angle Shades	Phlogophora meticulosa	10
Apple Leaf Miner	Lyonetia clerkella	42
Ash Bud Moth	Prays fraxinella	1
August Thorn	Ennomos quercinaria	3
Barred Sallow	Tiliacea aurago	8
Barred Straw	Gandaritis pyraliata	2
Beaded Chestnut	Agrochola lychnidis	31
Beautiful Hook-tip	Laspeyria flexula	1
Beautiful Plume	Amblyptilia acanthadactyla	10
Bee Moth	Aphomia sociella	33
Bird-cherry Ermine	Yponomeuta evonymella	7
Black Arches	Lymantria monacha	1
Black Rustic	Aporophyla nigra	17
Blair's Shoulder-knot	Lithophane leautieri subsp. hesperica	11
Blood-vein	Timandra comae	2
Box-tree Moth	Cydalima perspectalis	1296
Bright-line Brown-eye	Lacanobia oleracea	22
Brimstone Moth	Opisthograptis luteolata	146

Brindled Beauty	<i>Lycia hirtaria</i>	35
Broad-barred White	<i>Hecatera bicolorata</i>	1
Broad-bordered Yellow Underwing	<i>Noctua fimbriata</i>	8
Brown House Moth	<i>Hofmannophila pseudospretella</i>	33
Brown-spot Pinion	<i>Agrochola litura</i>	1
Brussels Lace	<i>Cleorodes lichenaria</i>	1
Bud Moth	<i>Spilonota ocellana</i>	2
Buff Ermine	<i>Spilosoma lutea</i>	14
Buff-tip	<i>Phalera bucephala</i>	1
Burnished Brass	<i>Diachrysia chrysis</i>	32
Cabbage Moth	<i>Mamestra brassicae</i>	4
Canary-shouldered Thorn	<i>Ennomos alniaria</i>	2
Carnation Tortrix	<i>Cacoecimorpha pronubana</i>	7
Centre-barred Sallow	<i>Atethmia centrargo</i>	6
Chequered Fruit-tree Tortrix	<i>Pandemis corylana</i>	1
Cherry Bark Moth	<i>Enarmonia formosana</i>	5
Chestnut (moth)	<i>Conistra vaccinii</i>	2
Chinese Character	<i>Cilix glaucata</i>	1
Cinerosus Groundling	<i>Bryotropha terrella</i>	4
Cinnabar	<i>Tyria jacobaeae</i>	3
Clay	<i>Mythimna ferrago</i>	2
Clifden Nonpareil	<i>Catocala fraxini</i>	1
Cloaked Minor	<i>Mesoligia furuncula</i>	6
Clouded Border	<i>Lomaspilis marginata</i>	2
Clouded Drab	<i>Orthosia incerta</i>	14
Clouded Silver	<i>Lomographa temerata</i>	5
Codling Moth	<i>Cydia pomonella</i>	29
Common Birch Bell	<i>Epinotia immundana</i>	1
Common Carpet	<i>Epirrhoe alternata</i>	4
Common Emerald	<i>Hemithea aestivaria</i>	7
Common Footman	<i>Eilema lurideola</i>	16
Common Grass-veneer	<i>Agriphila tristella</i>	47
Common Grey	<i>Scoparia ambigualis</i>	3
Common Marble	<i>Celypha lacunana</i>	14
Common Marbled Carpet	<i>Dysstroma truncata</i>	63
Common Plume	<i>Emmelina monodactyla</i>	34
Common Pug	<i>Eupithecia vulgata</i>	26
Common Quaker	<i>Orthosia cerasi</i>	29
Common Rustic	<i>Mesapamea secalis</i>	132
Common Slender	<i>Gracillaria syringella</i>	1
Common Swift	<i>Korscheltellus lupulina</i>	9
Common Wainscot	<i>Mythimna pallens</i>	36
Common Wave	<i>Cabera exanthemata</i>	2
Common Yellow Conch	<i>Agapeta hamana</i>	7
Copper Underwing	<i>Amphipyra pyramidea</i>	10
Crescent Plume	<i>Marasmarcha lunaedactyla</i>	3
Cypress Carpet	<i>Thera cupressata</i>	4
Cypress Pug	<i>Eupithecia phoeniceata</i>	31
Cypress Tip Moth	<i>Argyresthia cupressella</i>	2
Dark Arches	<i>Apamea monoglypha</i>	95
Dark Ash Bud Moth	<i>Prays ruficeps</i>	1
Dark Chestnut	<i>Conistra ligula</i>	1
Dark Dagger or Grey Dagger (undetermined)	<i>Acronicta psi/tridens</i>	1
Dark Fruit-tree Tortrix	<i>Pandemis heparana</i>	1
Dark Spectacle	<i>Abrostola triplasia</i>	1

Deep-brown Dart	Aporophyla lutulenta	2
Delicate	Mythimna vitellina	1
Dewick's Plusia	Macdunnoughia confusa	3
Diamond-back Moth	Plutella xylostella	6
Dingy Footman	Eilema griseola	11
Dingy Shell	Euchoeca nebulata	1
Double Square-spot	Xestia triangulum	3
Double-striped Pug	Gymnoscelis rufifasciata	76
Double-striped Tabby	Hypsopygia glaucinalis	3
Dun-bar	Cosmia trapezina	5
Dusky Thorn	Ennomos fuscantaria	16
Early Grey	Xylocampa areola	19
Elephant Hawk-moth	Deilephila elpenor	13
European Corn Borer	Ostrinia nubilalis	4
Eyed Hawk-moth	Smerinthus ocellata	3
Fan-foot	Herminia tarsipennalis	10
Feathered Thorn	Colotois pennaria	3
Figure of Eighty	Tethea ocularis	3
Flame	Axylia putris	12
Flame Shoulder	Ochropleura plecta	44
Flounced Rustic	Luperina testacea	41
Freyer's Pug	Eupithecia intricata subsp. arceuthata	3
Furness Dowd	Blastobasis adustella	7
Garden Carpet	Xanthorhoe fluctuata	50
Garden Grass-veneer	Chrysoteuchia culmella	280
Garden Pebble	Evergestis forficalis	20
Garden Rose Tortrix	Acleris variegana	2
Garden Tiger	Arctia caja	2
Gold Triangle	Hypsopygia costalis	8
Green Carpet	Colostygia pectinataria	3
Green Oak Tortrix	Tortrix viridana	2
Green Pug	Pasiphila rectangulata	7
Green-brindled Crescent	Allophytes oxyacanthae	2
Grey Knot-horn	Acrobasis advenella	3
Hawthorn Moth	Scythropia crataegella	4
Heart and Club	Agrotis clavis	72
Heart and Dart	Agrotis exclamationis	481
Hebrew Character	Orthosia gothica	54
Herald	Scoliopteryx libatrix	1
Hoary Belle	Eucosma cana	1
Holly Tortrix	Rhopobota naevana	1
Hook-streak Grass-veneer	Crambus lathoniellus	14
Humming-bird Hawk-moth	Macroglossum stellatarum	1
Jersey Tiger	Euplagia quadripunctaria	64
Juniper Webber	Dichomeris marginella	3
Kent Black Arches	Meganola albula	1
Knot Grass (moth)	Acronicta rumicis	17
Lackey	Malacosoma neustria	1
L-album Wainscot	Mythimna l-album	12
Large Fruit-tree Tortrix	Archips podana	2
Large Yellow Underwing	Noctua pronuba	1004
Lesser Broad-bordered Yellow Underwing	Noctua janthe	331
Lesser Cream Wave	Scopula immutata	1
Lesser Swallow Prominent	Pheosia gnoma	1
Lesser Yellow Underwing	Noctua comes	193

Light Arches	Apamea lithoxylaea	2
Light Brown Apple Moth	Epiphyas postvittana	136
Light Emerald	Campaea margaritaria	38
Lime Hawk-moth	Mimas tiliae	3
Lime-speck Pug	Eupithecia centaureata	2
Long-horned Flat-body	Carcina quercana	22
Lunar Underwing	Omphaloscelis lunosa	98
Lunar-spotted Pinion	Cosmia pyralina	1
Lychnis (moth)	Hadena bicruris	17
Magpie Moth	Abraxas grossulariata	1
Maiden's Blush	Cyclophora punctaria	2
Maple Button	Acleris forsskaleana	5
Marbled Beauty	Bryophila domestica	1
Marbled Bell	Eucosma campoliliana	1
Marbled Green	Nyctobrya muralis	4
Marbled Minor	Oligia strigilis	25
Marbled Orchard Tortrix	Hedya nubiferana	1
March Moth	Alsophila aescularia	1
March Tubic	Diurnea fagella	1
May Highflyer	Hydriomena impluviata	1
Meal Moth	Pyralis farinalis	6
Merveille du Jour	Griposia aprilina	1
Middle-barred Minor	Oligia fasciuncula	7
Miller (moth)	Acronicta leporina	1
Mother of Pearl	Pleuroptya ruralis	38
Mottled Beauty	Alcis repandata	1
Mottled Rustic	Caradrina morpheus	1
Mouse Moth	Amphipyra tragopoginis	3
Muslin Moth	Diaphora mendica	16
Nut-tree Tussock	Colocasia coryli	3
Oak Beauty	Biston strataria	1
Oak Hook-tip	Watsonalla binaria	1
Old Lady	Mormo maura	1
Olive Pearl	Udea olivalis	4
Orange Footman	Eilema sororcula	4
Orange Swift	Triodia sylvina	4
Orchard Ermine	Yponomeuta padella	29
Pale Mottled Willow	Caradrina clavipalpis	86
Pale Pinion	Lithophane socia	2
Pale Prominent	Pterostoma palpina	1
Pale Tussock	Calliteara pudibunda	3
Pebble Hook-tip	Drepana falcataria	2
Peppered Moth	Biston betularia	8
Pine Leaf-mining Moth	Clavigesta purdeyi	1
Plum Fruit Moth	Grapholita funebrana	1
Plum Tortrix	Hedya pruniana	4
Poplar Grey	Subacronicta megacephala	1
Powdered Quaker	Orthosia gracilis	1
Privet Hawk-moth	Sphinx ligustri	8
Privet Twist	Clepsis consimilana	14
Purple Bar	Cosmorhoe ocellata	1
Red Piercer	Lathronympha strigana	1
Red Twin-spot Carpet	Xanthorhoe spadicearia	4
Red Underwing	Catocala nupta	1
Red-barred Tortrix	Ditula angustiorana	12
Red-line Quaker	Agrochola lota	3

Riband Wave	<i>Idaea aversata</i>	55
Rosy Footman	<i>Mitochrista miniata</i>	3
Rosy Minor	<i>Litologia literosa</i>	2
Rosy Rustic	<i>Hydraecia micacea</i>	1
Ruby Tiger	<i>Phragmatobia fuliginosa</i>	3
Ruddy Streak	<i>Tachystola acroxantha</i>	157
Rush Marble	<i>Bactra lancealana</i>	1
Rush Veneer	<i>Nomophila noctuella</i>	1
Rustic	<i>Hoplodrina blanda</i>	48
Rustic Shoulder-knot	<i>Apamea sordens</i>	13
Rusty Dot	<i>Udea ferrugalis</i>	11
Sallow (moth)	<i>Cirrhia icteritia</i>	3
Satellite	<i>Eupsilia transversa</i>	1
Satin Grass-veneer	<i>Crambus perlella</i>	2
Scalloped Hazel	<i>Odontopera bidentata</i>	1
Scalloped Oak	<i>Crocallis elinguaris</i>	13
Scarce Footman	<i>Eilema complana</i>	1
Scarlet Tiger	<i>Callimorpha dominula</i>	11
Scorched Carpet	<i>Ligdia adustata</i>	3
Scorched Wing	<i>Plagodis dolabraria</i>	1
September Thorn	<i>Ennomos erosaria</i>	3
Setaceous Hebrew Character	<i>Xestia c-nigrum</i>	107
Shaded Broad-bar	<i>Scotopteryx chenopodiata</i>	1
Shoulder-striped Wainscot	<i>Leucania comma</i>	3
Shuttle-shaped Dart	<i>Agrotis puta</i>	184
Silver Y	<i>Autographa gamma</i>	95
Single-dotted Wave	<i>Idaea dimidiata</i>	2
Six-striped Rustic	<i>Xestia sexstrigata</i>	10
Small Blood-vein	<i>Scopula imitaria</i>	17
Small China-mark	<i>Cataclysta lemnata</i>	2
Small Dusty Wave	<i>Idaea seriata</i>	19
Small Elephant Hawk-moth	<i>Deilephila porcellus</i>	1
Small Emerald	<i>Hemistola chrysoprasaria</i>	1
Small Grey	<i>Eudonia mercurella</i>	11
Small Magpie	<i>Anania hortulata</i>	30
Small Phoenix	<i>Ecliptopera silaceata</i>	1
Small Square-spot	<i>Diarsia rubi</i>	3
Smoky Wainscot	<i>Mythimna impura</i>	16
Snout	<i>Hypena proboscidalis</i>	44
Spectacle	<i>Abrostola tripartita</i>	16
Spruce Carpet	<i>Thera britannica</i>	1
Square-spot Rustic	<i>Xestia xanthographa</i>	172
Straw Dot	<i>Rivula sericealis</i>	16
Straw Grass-veneer	<i>Agriphila straminella</i>	40
Straw Underwing	<i>Thalpophila matura</i>	82
Swallow-tailed Moth	<i>Ourapteryx sambucaria</i>	5
Tawny Marbled Minor	<i>Oligia latruncula</i>	21
Thistle Ermine	<i>Myelois circumvoluta</i>	2
Toadflax Pug	<i>Eupithecia linariata</i>	3
Treble Bar	<i>Aplocera plagiata</i> subsp. <i>plagiata</i>	1
Treble Brown Spot	<i>Idaea trigeminata</i>	5
Treble Lines	<i>Charanyca trigrammica</i>	70
Turnip Moth	<i>Agrotis segetum</i>	5
Twenty-plume Moth	<i>Alucita hexadactyla</i>	4
Twin-spotted Quaker	<i>Anorthoa munda</i>	1
Uncertain	<i>Hoplodrina octogenaria</i>	145

Vapourer	<i>Orgyia antiqua</i>	1
Vestal	<i>Rhodometra sacraria</i>	3
Vine's Rustic	<i>Hoplodrina ambigua</i>	446
V-Pug	<i>Chloroclystis v-ata</i>	5
Water Veneer	<i>Acentria ephemerella</i>	7
Waved Umber	<i>Menophra abruptaria</i>	6
Wax Moth	<i>Galleria mellonella</i>	1
White Ermine	<i>Spilosoma lubricipeda</i>	3
White-point	<i>Mythimna albipuncta</i>	6
White-shouldered House Moth	<i>Endrosis sarcitrella</i>	9
White-spotted Pug	<i>Eupithecia tripunctaria</i>	2
Willow Beauty	<i>Peribatodes rhomboidaria</i>	367
Winter Moth	<i>Operophtera brumata</i>	1
Wormwood Pug	<i>Eupithecia absinthiata</i>	3
Yellow Oak Button	<i>Aleimma loeflingiana</i>	1
Yellow Shell	<i>Camptogramma bilineata</i>	14
Yellow-barred Brindle	<i>Acasis viretata</i>	7
a bryotropa species	<i>Bryotropa</i>	1
a Caloptilia species	<i>Caloptilia</i>	2
a Cnephasia species	<i>Cnephasia</i>	4
a Coleophora species	<i>Coleophora</i>	3
a longhorn moth	<i>Nematopogon swammerdamella</i>	1
a micro-moth	<i>Agonopterix arenella</i>	3
a micro-moth	<i>Argyresthia spinosella</i>	2
a micro-moth	<i>Blastobasis lacticolella</i>	1
a micro-moth	<i>Borkhausenia fuscescens</i>	3
a micro-moth	<i>Bryotropa domestica</i>	5
a micro-moth	<i>Bucculatrix nigricomella</i>	1
a micro-moth	<i>Caloptilia rufipennella</i>	1
a micro-moth	<i>Caloptilia semifascia</i>	3
a micro-moth	<i>Caloptilia stigmatella</i>	1
a micro-moth	<i>Cochylis atricapitana</i>	8
a micro-moth	<i>Crassa unitella</i>	3
a micro-moth	<i>Depressaria daucella</i>	1
a micro-moth	<i>Infurcitinea argentimaculella</i>	1
a micro-moth	<i>Mompha epilobiella</i>	1
a micro-moth	<i>Mompha ochraceella</i>	1
a micro-moth	<i>Monopis</i>	1
a micro-moth	<i>Monopis crocicapitella</i>	4
a micro-moth	<i>Oegoconia deauratella</i>	1
a micro-moth	<i>Parornix</i>	1
a micro-moth	<i>Teleiodes vulgella</i>	1
a micro-moth	<i>Tinea trinotella</i>	1
a micro-moth	<i>Yponomeuta irrorella</i>	1
a micro-moth	<i>Ypsolopha ustella</i>	2
A Nematopogon species	<i>Nematopogon</i>	1
a november or autumnal moth (unidentified)	<i>Epirrita</i>	6
a <i>Oligia</i> minor moth (unidentified)	<i>Oligia</i>	2
a <i>Phyllonorycter</i> species	<i>Phyllonorycter</i>	2
a pyralid moth	<i>Acrobasis suavella</i>	1
a pyralid moth	<i>Agriphila geniculea</i>	34
a pyralid moth	<i>Anania coronata</i>	18
a pyralid moth	<i>Anania crocealis</i>	1
a pyralid moth	<i>Endotricha flammealis</i>	18
a pyralid moth	<i>Ephestia woodiella</i>	6

a pyralid moth	Eudonia angustea	22
a pyralid moth	Eudonia lacustrata	27
a pyralid moth	Euzophera pinguis	6
a pyralid moth	Nephopterix angustella	4
a pyralid moth	Palpita vitrealis	2
a pyralid moth	Pyrausta aurata	11
a pyralid moth	Pyrausta purpuralis	1
a pyralid moth	Udea prunalis	7
a small ermine moth (unidentified)	Yponomeuta	73
a tortrix moth	Acleris	1
a tortrix moth	Acleris sparsana	3
a tortrix moth	Acleris umbrana	1
a tortrix moth	Ancylis achatana	2
a tortrix moth	Celypha striana	47
a tortrix moth	Cydia fagiglandana	1
a tortrix moth	Epinotia bilunana	1
a tortrix moth	Grapholita janthinana	1
a tortrix moth	Grapholita lobarzewskii	1
a tortrix moth	Lozotaenia forsterana	2
a tortrix moth	Lozotaeniodes formosana	2
a tortrix moth	Notocelia cynosbatella	6
a tortrix moth	Notocelia trimaculana	5
a tortrix moth	Pammene regiana	1
a tortrix moth	Syndemis musculana	2
An Acrobasis species	Acrobasis	1
an Elachista species	Elachista	1
An Oegoconia species	Oegoconia	1

Evidence of **Box-tree moths** was found in several places. Decimated bushes were in Avon Close, the Memorial Park, Banwell Close, the cemetery, Culvers Road, Stockwood Vale and Somerdale.

Elsewhere, the following species were found:

Cemetery

Box-tree Moth, Setaceous Hebrew Character, Square-spot Rustic, Dusky Thorn, Large Yellow Underwing, Snout, Brimstone Moth, Common Marbled Carpet, Willow Beauty, Flounced Rustic, Garden Rose tortrix and Hypsopygia glaucinalis.

Stockwood Vale

Jersey Tiger, Silver Y, Willow Beauty, Lime Hawk-moth, Box-tree Moth and Pyrausta purpuralis.

West View Road

Humming-bird Hawk-moth, Large Yellow Underwing, Pyrausta aurata and Scarlet Tiger.

Somerdale

Two female **Muslin Moths**, **Three Mullein Moth** larvae, 171 **Cinnabar** larvae on 13th July, **Ruby Tiger** larvae and **Celypha lacunana**.

Hedges were stripped bare by **ermine** larvae on Durley Hill and **Spindle Ermine** were recorded at Queen Charlton. **Cinnabar** larvae were recorded on Ragwort in Charlton Park and Park Road. **Yellow Shell** were seen in daylight by the cycle track, the Mill Grounds and the stoney lane that runs down to Chewton Place. Two **Privet Hawk-moths** near Manor Road Community Woodland, a rare **Convolvulus Hawk-moth** on a door that faces onto the

woodland and an **Elephant Hawk-moth** larva in the Memorial Park. A **Jersey Tiger** in Charlton Park, **Magpie Moth** in Manor Road Community Woodland and a **Silver Y** on the bank of the River Avon. A dead **Leopard Moth** on an unspecified road on 24th June.

Apart from those mention in the table above, the larvae of **Knot-grass**, **Cinnabar** and **Elephant Hawk-moth** were found in Handel Road

DRAGONFLIES AND DAMSELFLIES

Records of dragonflies are a bit thin on the ground again. Not because of falling numbers but the lack of records. Information about any species in future years would be very welcome.

Beautiful Demoiselle

Three at Somerdale on 11th May and two on the approach path a few days later. Three along the Swineford stretch of the River Avon on 5th June. One or two in Manor Road Community Woodland, the Memorial Park, Chewton Keynsham, Chewton Place and even one in Ashton Way car park (on 24th June). Last recorded on 27th July.

Banded Demoiselle

First seen at Somerdale on 11th May. The Swineford stretch of the River Avon is a stronghold for this species. A count of 58 there on 5th June is not particularly high and there were probably many more a little later in the summer. A few were present in the Memorial Park, Chewton Keynsham, Chewton Place and the Mill Grounds. Gardens in West View Road and Handel Road were also visited. Last noted on 4th September.

White-legged Damselfly

As usual, it was the Swineford stretch of the River Avon that best suited them - 117 were counted on 5th June. A few were also seen at Somerdale, the Memorial Park, Chewton Keynsham and the Mill Grounds. Last seen on 4th September.

Large Red Damselfly

Very few reports. A West View Road garden, Somerdale, Manor Road Community Woodland and Stockwood Vale.

Azure Damselfly

Seven in Manor Road Community Woodland on 4th June and along the Swineford stretch of the River Avon the following day. Also seen in Stockwood Vale, the Mill Grounds, Somerdale and a West View Road garden.

Blue-tailed Damselfly

Nine along the Swineford stretch of the River Avon, then at Somerdale and Chewton Keynsham. Visited a Handel Road garden on to occasions – 14th and 22nd June.

Red-eyed Damselfly

Seven along the Swineford stretch of the River Avon on 5th June.

Southern Hawker

Noted in a Handel Road garden on seven days including a female that was caught in a moth trap. Also seen in Stockwood Vale and along the Swineford stretch of the River Avon.

Brown Hawker

Singles at Somerdale and along the Swineford stretch of the River Avon between 23rd July and 4th September.

Emperor Dragonfly

Four along the Swineford stretch of the River Avon on 5th June and singles there up to 4th September. Also in Stockwood Vale.

Scarce Chaser

Twenty-one along the Swineford stretch of the River Avon on 5th June. Three males rested on a single branch over the river at Somerdale on 11th June. Also in Stockwood Vale.

Broad-bodied Chaser

One at Somerdale on 11th June and another in Manor Road Community Woodland on 12th June and another along the Swineford stretch of the River Avon on 25th.

Back-tailed Skimmer

Three along the Swineford stretch of the River Avon on 5th June.

Common Darter

Only noted at Chewton Keynsham, Stockwood Vale, the Swineford stretch of the River Avon and Kelston Road. The latter was on a rather late date of 15th November, our second latest on record.

OTHER INSECTS

Ladybirds

2-spot Ladybirds at Somerdale on 21st June and by the cycle track on 6th October.

7-spot Ladybirds at Somerdale, by the cycle track, the Memorial Park and Queen Charlton between 11th May and 6th October.

A **14-spot Ladybird** at Somerdale on 22nd May.

Several **Harlequin Ladybirds** caught in a Handel Road moth trap.

An **Orange Ladybird** caught in a Handel Road moth trap on 5th September.

A **10-spot Ladybird** caught in a Handel Road moth trap on 8th August.

Shieldbugs

Only one **Birch Shieldbug** entered a moth trap in Handel Road this year. A Birch tree in the garden has probably been the source for several years so why they have been in short supply this year is a mystery.

Dock Bugs were only recorded twice so have doubtless been overlooked. Both were noted at Somerdale.

Forest Bugs in a Handel Road moth trap on six occasions between 5th and 23rd September and at the cemetery on 16th.

Green Shieldbugs were seen twice, one in Handel Road and the other at Somerdale.

A Handel Road garden hosted a **Parent Bug** on 3rd August, a **Cabbage Bug** on 23rd July and **Juniper Shieldbugs** on two occasions (17th March on a washing line and 7th September in a moth trap).

Bugs

Two gardens revealed most of the bugs that were identified. West View Road hosted a **Meadow Plant Bug**, **Pond Skaters** and several **Water Measurers**. Handel Road revealed **Acericus heydenii**, **Issus coleoptratus**, **Ledra aurita**, **Tremulicerus** and **Zygina flammigera**. **Leptoderma dolabrata** was identified at Somerdale.

Beetles

Alder Leaf Beetles in West View Road between 15th April and 23rd June (they were recorded up to 28th September in 2022).

Cantharus rustica along the Swineford stretch of the River Avon on 5th June.

Two **Cockchafers** in Handel Road on 27th May and one along the Swineford stretch of the River Avon on 5th June.

Many copulating pairs of **Common Red Soldier Beetles** on Ragwort at Somerdale on 13th July.

Green Dock Beetles and an **Oedemera** species at Somerdale.

A **Musk Beetle** in Stockwood Vale on 20th July.

A **Black Sexton Beetle** in Handel Road on 17th April.

A dead **Rose Chafer** in Park Road on 11th June.

A **Thick-legged Flower Beetle** in West View Road on 13th June.

Whirligigs on the pond in Manor Road Community Woodland.

Flies

Many **Semaphore Flies** by the pond in a West View Road garden on 23rd June.

Galls of **Canada Thistle Gall Flies** in the Mill Grounds on 27th July.

A **Dark-edged Bee-fly** in Handel Road on 20th April.

Grasshoppers and Crickets

Dark Bush-crickets at Somerdale, the Swineford stretch of the River Avon between May and July.

A **Field Grasshopper** in a Handel Road garden on 21st August.

A **Roesel's Bush-cricket** at Somerdale on 11th June.

Bees and wasps

Common Wasps were a regular hazard in a Handel Road moth trap. A total of nearly 1700 were extracted between 13th July and 31st October; the highest number was 114 on 1st October.

Many **Hornets** were seen along a 250 yard stretch of the cycle path on 6th October. Also two in Manor Road Community Woodland on 11th October.

Tree Bumblebees used a nest box in West View Road. A queen **Red-tailed Bumblebee** visited the same garden and **Wool Carder Bees** were seen on several occasions patrolling Lamb's Ear plants.

Hoverflies

A **Hornet Hoverfly** in Handel Road.

Chrysotoxum bicinctum and **Marmalade Hoverfly** around Somerdale.

Volucella pellucens in Stockwood Vale.

Others

A **Black Lace-weaver spider** in Handel Road on 17th April and a **Garden Cross Spider** on 23rd September.

WATER QUALITY

River dipping took place again in the River Chew at Dapps Hill on 24th September on a clear, fine, mild autumn afternoon. In common with recent years, there was an age limit of seven years, any younger enthusiasts directed to pond dipping at Wellsway school the previous afternoon.

Eighteen people took part, including 12 children, and nine kick samples were taken. The river level was low enough for most wellies, although the flow rate was quite good over

the small dam of stones (which is now well-established), as well as over a second riffle, newly established this year, about five metres downstream from the first.

Fifteen major invertebrate indicator groups were represented. In common with recent years, most samples had relatively low numbers, apart from **Stonefly** nymphs, **Burrowing Mayfly** nymphs and the ever-present **Water Mites**, which were more abundant than usual in most trays. Some trays also contained unusually large numbers of **Small Cased Caddisfly** larvae, like small pieces of twig crawling around the tray! Fish were again caught in a few samples, including **Minnow** and **Bullhead**.

Overall, the main indicator groups and species were all present, sufficient to suggest that the quality of water remains good. Certainly, there is still no obvious sign of poor water quality (e.g. increased sediment, sludge, or a bad smell). **Stonefly** nymphs and **Burrowing Mayfly** nymphs were present in most samples, comparable with last year's good results. Some samples contained good numbers of **Cased** and **Uncased Caddisfly** larvae (including *Hydropsyche* species), more evidence of well-oxygenated water. There was a much lower diversity of molluscs than last year, only a few **Pea Shell Cockles** and a **Bladder Snail** found. It is impossible to explain why this should be; it could just be a reflection of the relatively small sample size and the particular areas kicked lacking in molluscs. **Bloodworms**, **Sludgeworms**, **Leeches** and other polluted water indicators were present in low numbers, reflecting a continuing healthy river ecosystem here.

(Note: % Frequency scores on the table below indicate the number of trays in which at least one individual was found. At least one **Stonefly** nymph was found in all 9 trays, hence the 100% frequency score.)

Wellsway School pond dipping

This event was put on for younger children on 24th September. Fifteen species were taken. These were **Chironomid midge larva (bloodworm)**, **Flatworm**, **Freshwater Shrimp**, **Greater Diving Beetle**, **Greater Water Boatman**, **Lesser Diving Beetle**, **Lesser Water Boatman**, **Mayfly nymph (Baetis sp)**, **Mosquito larva / pupa**, **Non-red midge larva**, **Phantom Midge larva**, **Pondskater**, **Tubifex worm (Sludgeworm)**, **Water Louse** and **Water Spider**.

The following table shows the '% frequency' of each species group, i.e. based on the number of trays in which one or more species was found. The first column shows 1998 when the first dipping was organised and the others show the last six years.

Species group	1998	2016	2017	2018	2020	2021	2022	2023
Stonefly nymph	27	73	67	86	70	82	60	100
Mayfly nymph (swimming)	40	7	7	7	10	64	30	44
Mayfly nymph (burrowing)	27	53	33	71	10	82	80	67
Cased Caddis larva	13	66	33	36	30	18	20	33
Uncased Caddis larva	47	33	60	14	50	36	30	67
Freshwater Shrimp	67	7	7	0	0	0	0	0
Waterlouse	7	7	7	7	30	0	0	0
Leech	53	0	33	21	20	9	10	22
Midge larvae (red - Bloodworm)	73	33	60	57	50	54	40	56
Midge larvae (non-red)	7	40	53	29	10	27	30	11
Sludgeworm (annelid worm)	73	53	67	79	30	18	60	78
Molluscs	53	40	7	21	20	45	80	22
Arachnids	73	53	73	64	60	64	70	100
Beetles	13	0	7	7	0	9	10	0
Other insects (e.g. fly larvae)	40	33	13	14	10	27	20	33
Flatworms	0	0	0	0	0	0	0	0
Fish	0	40	13	43	20	55	70	33

AMPHIBIANS, REPTILES, MOLLUSCS and other species

The first **Frog** appeared in a Handel Road pond on 12th February and the first frogspawn the following day. The first in West View Road were four days later and spawn the next day. The number of clumps in Handel Road rose to 13 and West View Road peaked at over 50. A lot of frogspawn was noted in the pond in Manor Road Community Woodland by 14th March, and both **Frog** and **Toad** spawn was identified later.

Palmate Newts were present in West View Road throughout the year.

A big **Pike** was caught near Dapps Hill on 26th January.

CONCLUSION

I hope that this report has proved to be interesting. Although many species are the same as in previous years, new ones continue to be found. The report has been compiled from over 6,000 individual items of data, which is significant for a fairly small area. Much of the data is passed on to Bristol Regional Environmental Records Centre (BRERC) by the finders, and I know that they appreciate this; they are interested in all aspects of wildlife, not just the rarer species, so please send them the data as well as to me. It is very easy to do this via their website www.brerc.org.uk.

Thank you very much to everyone who has contributed to this report again. Particular thanks go to Jenny Aldridge, Alan Bone, Janet Cann, Will Duckworth, Kathy and Martin Farrell, Andrew Harrison, Alan Hewett, Tony Kirby, Nick Page, Elspeth Rolls, Liz and Keith Strover, Paul Tompkins, Andy Wait and Liz Wintle. Information has also been picked up from various websites and blogs including Avon Birds that is updated daily and includes a huge amount of information and photographs. It can be found at <https://avonbirding.blogspot.com/> and is available to everyone.

John Aldridge

1A Handel Road, Keynsham, Bristol BS31 1BT

Email johnaldridge40@gmail.com

References:

Ian Green, Rupert Higgins, Clare and Mark Kitchen, 2000, *The Flora of the Bristol Region*

Ray Barnett, Rupert Higgins, Tony Moulin, Chris Wiltshire et al, 2003, *Butterflies of the Bristol Region*

Ray Barnett, Richard Andrews, Mike Bailey, Tim Corner, Rupert Higgins and John Martin, 2008, *Moths of the Bristol Region*

Ray Barnett, Richard Andrews, Tim Corner, Rupert Higgins, John Martin and Abigail Pedlow, 2012, *Dragonflies and Damselflies of the Bristol Region*

Paul Waring, Martin Townsend and Richard Lewington, 2003, *Field Guide to the Moths of Great Britain and Ireland*

Phil Sterling, Mark Parsons and Richard Lewington, 2012, *Field Guide to the Micro Moths of Great Britain and Ireland*
UK Moths website



*Orange Ladybird,
Handel Road, 5th September
2023*

Appendix A1 Breeding Birds Survey for one kilometre squares ST6666 (Top end of Wellsway) and ST6568 (including the River Chew north of Dapps Hill)

Note that the inclusion of any species does not necessarily mean that it bred or attempted to do so, but that the species was present during the breeding season.

Species	1 kilometre square ST6666		1 kilometre square ST6568	
	17/4/23	4/6/23	16/4/23	31/5/23
Blackbird	11	8	9	9
Blackcap	2	4	9	4
Blue Tit	1	1	8	2
Canada Goose	3			
Carrion Crow	7	11	19	5
Chiffchaff	1	1	1	
Collared Dove	5		6	6
Cormorant	2			1
Duncock	5	1	2	
Feral Pigeon	20	8	21	23
Goldfinch	1	6	7	5
Great Spotted Woodpecker			1	
Great Tit	4		5	
Greenfinch	1	3		
Grey Heron			1	
Herring Gull	1	2	1	1
Hobby				1
House Sparrow	5	4	44	16
Jackdaw	10	14	24	22
Lesser Black-backed Gull		10	10	5
Magpie	8	18	8	7
Mallard			17	31
Mistle Thrush	1			
Moorhen			2	1
Pheasant	4	2		
Robin	7	5		12
Rook	5	4	21	5
Song Thrush	1	1	1	2
Starling	8	10	17	23
Swallow		1	1	
Swift		3		
Woodpigeon	35	20	58	22
Wren	4	3	8	11

Appendix B1 **First winter counts for one kilometre squares ST6669 and ST6768**
(both by the River Avon)

	1 kilometre square ST6669			1 kilometre square ST6768	
Species	27/1/23	21/2/23		27/1/23	21/2/23
Black-headed Gull	161	41		237	1
Blackbird	2	1			1
Blue Tit	2	3		3	1
Canada Goose	5	1		60	59
Carrion Crow	12	6		263	5
Chaffinch		1			
Coal Tit	1				
Common Gull	4	1		3	
Cormorant	3	2		2	2
Dunnock	3	3			
Feral Pigeon	2	3			
Fieldfare				7	6
Goldfinch	2	6		80	3
Goosander				2	
Great Spotted Woodpecker				2	1
Great Tit	4				1
Green Woodpecker				1	2
Grey Heron	1	1			
Grey Wagtail		1			
Herring Gull	2			2	
Jackdaw	15	2		218	8
Lesser Black-backed Gull	1	1		6	
Long-tailed Tit					2
Magpie	11	5		3	3
Mallard	3	6			8
Meadow Pipit				2	
Moorhen	4			5	8
Mute Swan	6	3		3	3
Pheasant				1	1
Pied Wagtail	3			21	
Redwing				58	
Robin	6	7		2	4
Rook				8	
Skylark					3
Song Thrush	1	1			1
Starling				51	
Treecreeper		1			
Woodpigeon	7	11			15
Wren		3		1	5

**Appendix B2 Second winter counts for one kilometre squares ST6669 and ST6768
(both by the River Avon)**

	1 kilometre square ST6669			1 kilometre square ST6768	
Species	21/11/23	11/12/23		21/11/23	11/12/23
Black-headed Gull	48	83		8	1
Blackbird	3	1		1	
Blue Tit	2	7			
Canada Goose	2				8
Carrion Crow	9	14		87	60
Chaffinch	1	4			
Common Gull		20			
Cormorant	5	3		1	1
Dunnock	2	2			
Feral Pigeon	11	12		3	
Fieldfare		5			
Goldfinch	21	6		30	8
Great Spotted Woodpecker		1			
Great Tit	3	3			
Green Woodpecker				1	
Grey Heron					1
Herring Gull				3	2
Jackdaw	1	2		26	9
Kingfisher					
Lesser Black-backed Gull	1	9			
Long-tailed Tit	7				
Magpie	3	5		2	3
Mallard	4	7		6	5
Meadow Pipit					1
Moorhen	1	1		2	2
Mute Swan	2	8		6	5
Redwing		1		1	6
Red-legged Partridge				4	
Robin	4	7		1	
Siskin					4
Skylark				2	
Woodpigeon	8	7		16	3
Wren	2			1	1

**Appendix B3 First and second winter counts for one kilometre square ST6568
(central Keynsham)**

Species	19/2/23		2/12/23
Black-headed Gull	22		31
Blackbird	4		5
Blue Tit	7		2
Carrion Crow	11		7
Collared Dove	6		6
Duncock	7		1
Feral Pigeon	35		76
Great Tit	1		1
Grey Wagtail	1		
Herring Gull	1		4
House Sparrow	25		14
Jackdaw	39		50
Kingfisher	2		
Lesser Black-backed Gull	1		2
Long-tailed Tit	1		
Magpie	28		7
Mallard	46		27
Moorhen	3		2
Pied Wagtail	1		1
Robin	19		2
Rook	10		14
Song Thrush	1		
Starling	51		22
Woodpigeon	32		14
Wren	6		

Appendix C1 Park Road garden

A tick indicates that the species was present.

Species	Jan	Feb	Mar	Apr	May	Jun	Jul	Aug	Sep	Oct	Nov	Dec
Blackbird	✓		✓	✓	✓	✓	✓	✓	✓	✓	✓	✓
Blue Tit	✓	✓	✓	✓	✓	✓	✓	✓	✓	✓	✓	✓
Carrion Crow	✓	✓	✓	✓	✓		✓	✓	✓	✓		
Collared Dove	✓	✓	✓	✓	✓	✓	✓	✓	✓	✓	✓	✓
Dunnock		✓	✓	✓	✓	✓	✓	✓	✓	✓	✓	✓
Feral Pigeon		✓	✓	✓	✓	✓	✓	✓	✓	✓	✓	✓
Goldfinch			✓	✓			✓		✓		✓	
Great Tit	✓	✓	✓		✓	✓	✓	✓	✓	✓	✓	✓
Greenfinch		✓			✓	✓	✓					✓
House Sparrow	✓	✓	✓	✓	✓	✓	✓	✓	✓	✓	✓	✓
Jackdaw					✓				✓			
Long-tailed Tit			✓									
Magpie	✓	✓	✓	✓	✓	✓	✓	✓	✓	✓		✓
Robin	✓	✓	✓	✓	✓		✓	✓	✓	✓		✓
Starling	✓	✓	✓	✓	✓		✓	✓	✓	✓	✓	✓
Woodpigeon	✓	✓	✓	✓	✓	✓	✓	✓	✓	✓	✓	✓
Wren				✓		✓						

Appendix C2 Balmoral Road

A tick indicates that the species was present either in a garden or flying over.

Species	Jan	Feb	Mar	Apr	May	Jun	Jul	Aug	Sep	Oct	Nov	Dec
Blackbird	✓		✓	✓	✓	✓	✓	✓	✓	✓	✓	✓
Blackcap	✓		✓									✓
Black-headed Gull	✓	✓	✓	✓							✓	✓
Blue Tit	✓	✓	✓	✓	✓	✓		✓	✓	✓	✓	✓
Buzzard				✓	✓	✓	✓					
Carrion Crow	✓	✓	✓	✓	✓	✓	✓	✓	✓	✓	✓	✓
Chaffinch	✓	✓	✓		✓							✓
Chiffchaff			✓	✓								
Coal Tit			✓					✓	✓			✓
Collared Dove	✓	✓	✓		✓	✓	✓	✓	✓	✓	✓	✓
Duncock	✓	✓	✓	✓	✓	✓	✓				✓	✓
Feral Pigeon	✓	✓	✓	✓	✓	✓	✓	✓	✓	✓	✓	✓
Goldcrest	✓	✓	✓	✓	✓	✓			✓	✓	✓	✓
Goldfinch	✓	✓	✓	✓	✓	✓	✓	✓				✓
Great Spotted Woodpecker												
Great Tit	✓			✓	✓				✓	✓	✓	✓
Greenfinch			✓									
Green Woodpecker				✓				✓		✓		
Grey Heron						✓						
Grey Wagtail												
Herring Gull	✓	✓	✓	✓	✓	✓	✓	✓	✓	✓	✓	✓
House Sparrow				✓	✓	✓	✓			✓		
Jackdaw	✓	✓	✓	✓	✓	✓	✓	✓	✓	✓	✓	✓
Lesser Black-backed Gull	✓	✓	✓	✓	✓	✓	✓	✓	✓	✓	✓	✓
Long-tailed Tit												
Magpie	✓		✓	✓	✓	✓	✓	✓	✓	✓	✓	✓
Mallard				✓								
Mute Swan								✓				
Pied Wagtail	✓									✓	✓	✓
Raven			✓	✓		✓		✓	✓			
Red Kite												
Robin	✓	✓	✓	✓	✓	✓	✓	✓	✓	✓	✓	✓
Rook		✓						✓				
Sparrowhawk				✓								
Starling	✓	✓	✓	✓	✓	✓	✓	✓	✓	✓	✓	✓
Swallow				✓								
Swift					✓	✓	✓	✓				
Woodpigeon	✓	✓	✓	✓	✓	✓	✓	✓	✓	✓	✓	✓
Wren	✓		✓	✓	✓							
Total Species	21	16	23	25	21	20	16	19	16	17	17	21

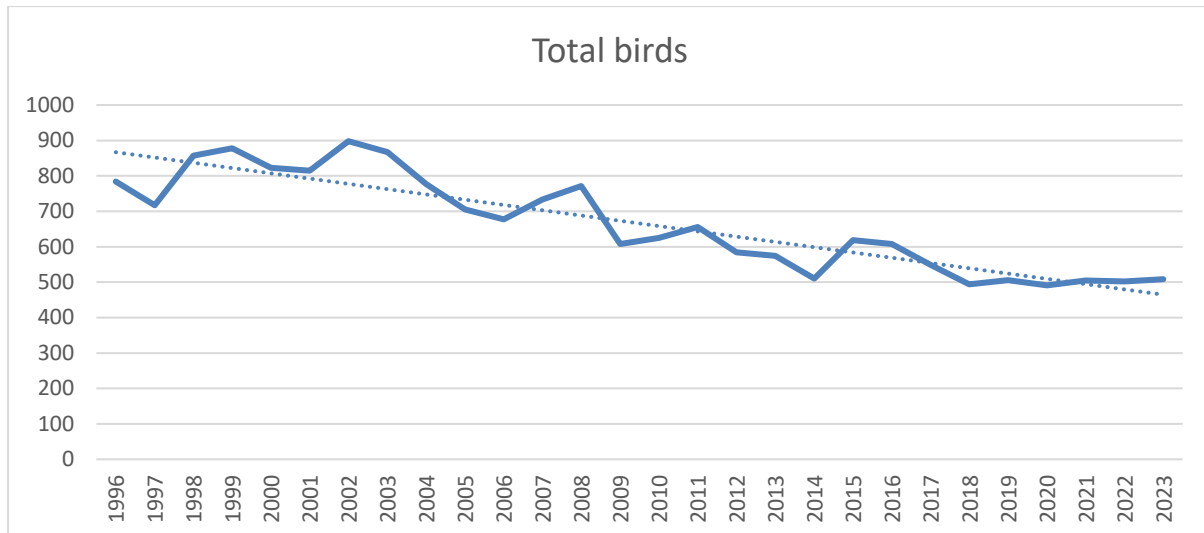
Appendix C3 Manor Road garden

A tick indicates that the species was present either in the garden or flying over.

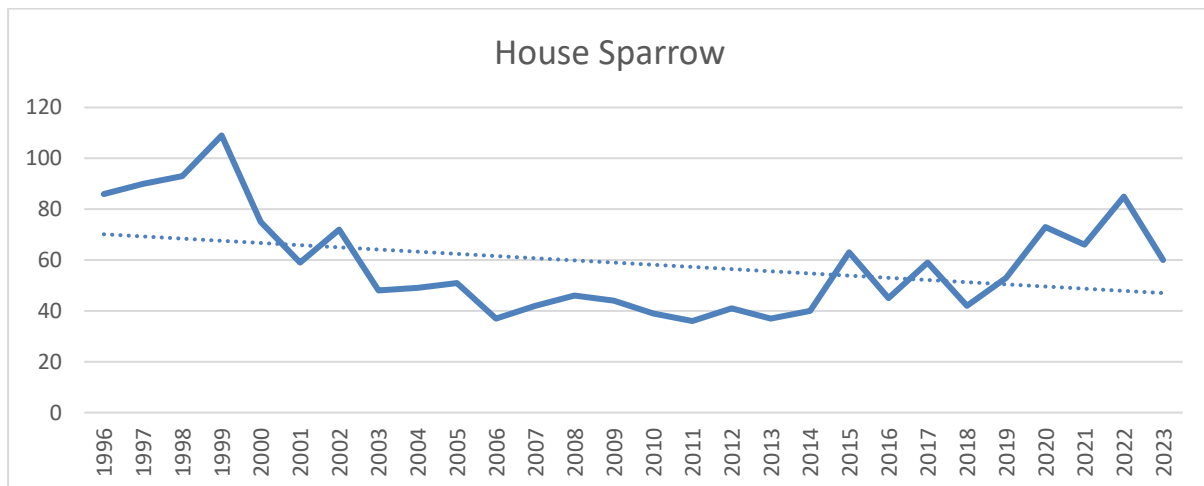
	Jan	Feb	Mar	Apr	May	Jun	Jul	Aug	Sep	Oct	Nov	Dec
Barn Owl								✓		✓		
Black-headed Gull			✓								✓	✓
Blackbird	✓	✓	✓	✓	✓	✓	✓	✓	✓	✓	✓	✓
Blackcap												
Blue Tit	✓	✓	✓	✓	✓	✓	✓	✓	✓	✓	✓	✓
Buzzard	✓	✓	✓	✓			✓			✓	✓	✓
Carrion Crow	✓	✓	✓	✓	✓	✓	✓	✓	✓	✓	✓	✓
Chaffinch	✓	✓	✓							✓	✓	✓
Chiffchaff			✓		✓		✓					
Coal Tit	✓	✓	✓		✓						✓	✓
Collared Dove	✓											
Cormorant			✓									
Cuckoo						✓						
Duncock	✓	✓	✓	✓	✓	✓	✓	✓	✓	✓	✓	✓
Feral Pigeon	✓	✓	✓	✓	✓	✓	✓	✓	✓	✓	✓	✓
Goldfinch	✓	✓	✓	✓		✓	✓	✓	✓	✓		✓
Great Tit	✓	✓	✓	✓	✓	✓	✓	✓	✓	✓	✓	✓
Great Spotted Woodpecker					✓							✓
Green Woodpecker	✓		✓	✓			✓		✓		✓	
Grey Partridge							✓	✓	✓			
Herring Gull	✓	✓	✓				✓			✓	✓	✓
House Sparrow	✓	✓	✓	✓	✓	✓	✓	✓	✓	✓	✓	✓
Jackdaw	✓	✓	✓	✓	✓	✓	✓	✓	✓	✓	✓	✓
Jay							✓					
Kestrel		✓										
Little Egret		✓										
Long-tailed Tit		✓	✓	✓								
Magpie	✓	✓	✓	✓	✓	✓	✓	✓	✓	✓	✓	✓
Pheasant	✓	✓	✓	✓	✓	✓	✓	✓				
Pied Wagtail	✓	✓								✓	✓	✓
Red Kite						✓						
Redwing	✓											
Robin	✓	✓	✓	✓	✓	✓	✓	✓	✓	✓	✓	✓
Rook	✓	✓						✓		✓		
Song Thrush	✓	✓										
Starling	✓		✓	✓	✓	✓	✓	✓	✓			✓
Sparrowhawk			✓	✓								✓
Swallow				✓								
Swift					✓	✓	✓					
Tawny Owl	✓	✓	✓					✓	✓	✓	✓	✓
Willow Warbler												
Woodpigeon	✓	✓	✓	✓	✓	✓	✓	✓	✓	✓	✓	✓
Wren		✓	✓	✓	✓	✓		✓		✓	✓	✓

Appendix C4 Analysis of breeding birds in central Keynsham

Surveys of birds counted in a one kilometre square in central Keynsham since 1996 for the British Trust for Ornithology and undertaken by the same recorder have been analysed. The square has a mixture of built up parts and the Memorial Park. This graph shows accumulated totals of all birds counted during the breeding season between April and June. Sixty-two species have been seen over this period but many will not have actually bred in the area. The trendline shows that there has been a significant decline over this period.



House Sparrows have been looked at in more detail. They seem to have passed their low point although 2023 is lower than 2022.



Appendix D Map of the Keynsham area

The area covered by this report is within the solid line.

