

# KEYNSHAM WILDLIFE

## 2022

Compiled by John Aldridge



*Ephemera vulgata*, River Avon, 16<sup>th</sup> June 2022



**£1.50 for  
Avon Wildlife  
Trust**

## INTRODUCTION

This is the thirty-sixth annual report on our local natural history and is aimed primarily at members of the Keynsham group of the Avon Wildlife Trust and other local naturalists. A customary word of caution has to be added to state that, although they are believed to be accurate, the following notes have not been subjected to independent scrutiny. The format has changed little over the years. The graphs that were first included in 2019 have been updated to include 2022. Some locations appear many times within the report including gardens; records from elsewhere in the area have the potential to widen the report so please look at what is around and record what you see. There are many mentions of Boyd Bridge where some of the more unusual birds are reported from. It is the spot where the Avon Valley Railway crosses the River Avon. It is on the edge of the area covered by this report and also where a very keen naturalist who lives in Saltford walks to. Early morning visits make a big difference to what can be found. A keen eye and ear also help!

A map of the area that this report is based upon can be found in Appendix D.

## BIRDS

Appendix A1 shows the results of Breeding Birds surveys, the results of which were fed into national and local databases. Appendices B1 to B3 are the continuation of winter bird surveys, the results of which were fed into a county survey. Appendix C1 shows information that has been gleaned over the year from Manor Road Community Woodland and includes birds seen in, over or from the managed area. Appendix C2 shows information from a garden in Park Road and Appendix C3 information in or over a Balmoral Road garden. Appendix C4 shows information from a garden in Manor Road but not the adjacent woodland. Appendix C5 shows a graph created from data gleaned over a period of 27 years during a breeding birds survey organised by the British Trust for Ornithology (BTO). Results for 2022 are in Appendix A1; these plus previous years' totals have been accumulated into a single chart by simply totalling all birds seen on both spring counts. This one kilometre square consists of two walks one of which is along roads and the other mainly through the Memorial Park. The surveys have been undertaken by the same person over the same route each year so provide a stable base. The graph shows a clear decline over this period but no attempt has yet been made to examine the data by species except for House Sparrow and Starling (see the graphs under those species).

### *Water birds*

#### **Little Grebe**

Near the start of the year there was one in the Memorial Park, and two were noted behind the bandstand in late December. Another could be seen on the pond at Field Grove Farm on 4<sup>th</sup> March but views are difficult from the cycle track so they could have been missed on other dates. All other records were on the River Avon, mostly around Boyd Bridge. Very regular visits produced many sightings of up to four birds (on 6<sup>th</sup> February) between 1<sup>st</sup> January and 13<sup>th</sup> March. Later in the year up to five (on 18<sup>th</sup> December) were present between 12<sup>th</sup> October and 30<sup>th</sup> December.

#### **Cormorant**

One in the River Chew in the Memorial Park on 1<sup>st</sup> January. The River Avon is the main locations for them. They are often seen perched on trees, posts and the electricity wires at Somerdale. In the first part of the year up to seven were noted up to 26<sup>th</sup> March. One in the marina on 13<sup>th</sup> May, then two summer sightings on 16<sup>th</sup> June and 14<sup>th</sup> August but only very few in the second winter period. Others were in flight. Singles over the town on 9<sup>th</sup> and 11<sup>th</sup> January, then over Charlton Fields on 9<sup>th</sup> March and 13<sup>th</sup> September. One over Manor Road in November and eight in a tight formation over the sewage works on 17<sup>th</sup> December.

### **Little Egret**

Reports are increasing but we are still not seeing as many as could be expected. Could they be present in Century Ponds in Stockwood Vale before fishermen arrive? Around Boyd Bridge over the River Avon is a good spot to see them as they appeared on nine occasions. One in Manor Road Community Woodland (or was it over?) on 6<sup>th</sup> February, Sightings in the River Chew (the Memorial Park, Steel Mills and Dapps Hill) on several days in June probably related to the same individual.

### **Grey Heron**

As usual, often seen. One or two in the Memorial Park all year including one that flew over during the jubilee party on 4<sup>th</sup> June, and one photographed catching a fish on 14<sup>th</sup> November. Only noted once in the Mill Grounds. Often noted along the River Avon. Seen over Stockwood Vale in January, March, April, May, June and October. Also over Handel Road on four occasions, once stopping by a garden pond. Other locations were Wellsway School field, Manor Road Community Woodland, over West View Road and Manor Road.

### **Great White Egret**

On 3<sup>rd</sup> July one flew west over Saltford Golf Course and was seen heading towards Keynsham. On 11<sup>th</sup> July two flew in very high from the north-east, passing north of Bitton church, then downstream 200 yards to the north of the river, then veered south and dropped height dramatically to come down in/near Stidham Farm; five minutes later they were up again and headed low back upstream, passing just to the south of Boyd Bridge.

### **Mute Swan**

No cygnets were reported this year. As usual, most sightings are along the River Avon, mainly in the Swineford direction but occasionally towards Hanham. The highest count was nine on 16<sup>th</sup> November. The only other report was of one flying over Balmoral Road on 4<sup>th</sup> December.

### **Shelduck**

One flew high downstream along the River Avon at 7.30 a.m. on 18<sup>th</sup> June, our first record since 2016.

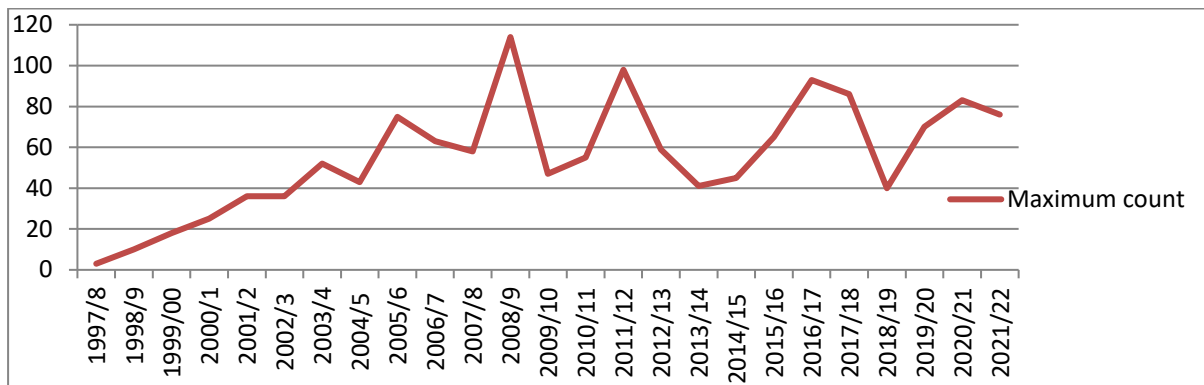
### **Greylag Goose**

Found on 22 occasions this year. They were all along the Swineford stretch of the River Avon, often with the flock of Canada Geese. Mostly single birds but two between 8<sup>th</sup> and 26<sup>th</sup> March.

### **Canada Goose**

Avon Valley Country Park and the River Avon that runs past was the stronghold for this species as usual. The highest count in the first winter period was 76 on 21<sup>st</sup> February. Interestingly, none were seen on 16<sup>th</sup> January but they were back a week later. In the second winter period the highest count was 33 on 13<sup>th</sup> December. Six adults with eleven young were present on 16<sup>th</sup> June. A pair nested on an island in the fishing pools in Stockwood Vale. One was seen in the Memorial Park in August.

The maximum count of the birds by the River Avon during recent winters is as follows:



### **Egyptian Goose**

Three birds were seen on two occasions, all in flight around the Boyd Bridge area. The first were on 10<sup>th</sup> January and the others on 25<sup>th</sup> October. It is thought that these are not birds that were released at Field Grove Farm a few years ago but were on journeys away from our area.

### **Mandarin Duck**

Three sightings this year, all near Boyd Bridge, that may be new birds rather than those released locally. A pair on 21<sup>st</sup> January, a male on 19<sup>th</sup> March and another male 26<sup>th</sup> October.

### **Shoveler**

One near Boyd Bridge and nearby on 4<sup>th</sup> and 5<sup>th</sup> February. Another flew low upstream along the River Avon on 21<sup>st</sup> July.

### **Gadwall**

A pair flew out of Stidham Farm on 23<sup>rd</sup> October towards Saltford and returned a short while later. Three tried to land near Boyd Bridge on 2<sup>nd</sup> December but couldn't find somewhere without disturbance.

### **Wigeon**

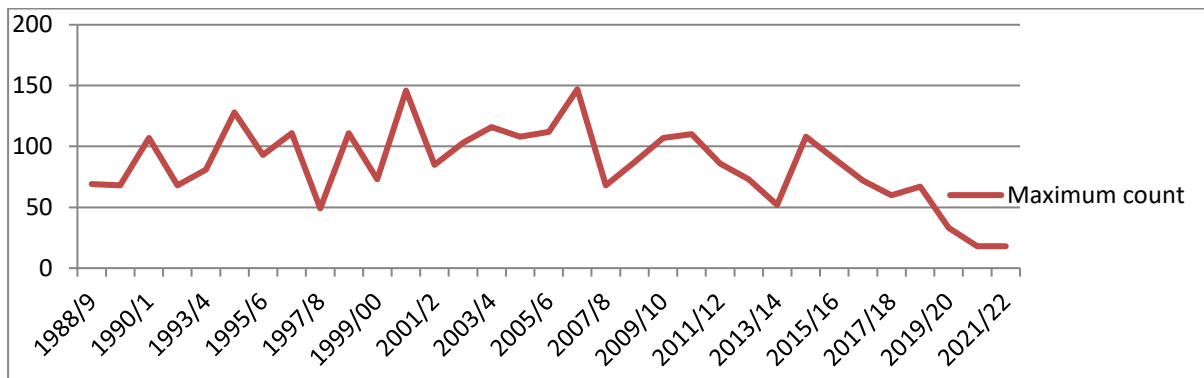
A female passed up and down the River Avon near Boyd Bridge on 5<sup>th</sup> December looking for somewhere to land.

### **Teal**

The year started well with eight near Boyd Bridge on New Year's Day. There were four more sightings here up to 4<sup>th</sup> March. Two were reported from Manor Road Community Woodland on 6<sup>th</sup> February and five at Somerdale on 17<sup>th</sup> December. The other six reports were from Boyd Bridge in December where the highest count was three pairs on 16<sup>th</sup>.

### **Mallard**

Present all year in the Memorial Park. The highest count was 104 on 12<sup>th</sup> September. Young were seen in the Memorial Park, along the Swineford stretch of the River Avon, the Mill Grounds and Stockwood Vale. A female with ten small young crossed the road opposite the Fire Station on 20<sup>th</sup> June, somehow avoiding heavy traffic. Often seen along the Swineford stretch of the River Avon, mostly around Boyd Bridge with a maximum of about 30 birds. The following graph shows the maximum count of birds on the River Avon during recent winters is as follows:



### **Goosander**

A sprinkling of reports in the first winter period but only two in December, all on the Swineford stretch of the River Avon and most near Boyd Bridge. Seen six times in January, three in March and one in April (3rd). The highest count was three on 6<sup>th</sup> January.

### ***Birds of Prey***

#### **Osprey**

One on the very edge of our area to the east of Boyd Bridge, then circled over Bitton church. Last seen in 2020 so missed us in 2021. This magnificent species only ever passes over and may well do so every year as they are now regular at Chew Valley Lake. It's just a matter of being in the right place at the right time!

#### **Red Kite**

At last, reports from our area are beginning to increase; there were twenty this year. Four of these were in March. On 10<sup>th</sup> and 11<sup>th</sup> July, two people saw birds over the town at separate times. One of the reports was over Chewton Keynsham, two over Stockwood Vale, three over Somerdale, four over Manor Road Community Woodland and nearby. There was a big increase around Saltford with a good number been seen around the Boyd Bridge area.

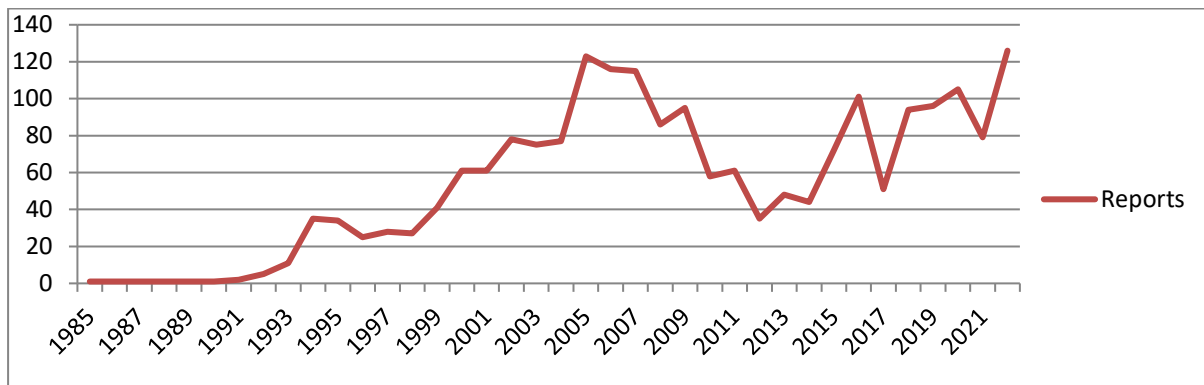
#### **Sparrowhawk**

There were 35 reports which is typical. All were of single birds except for two along the Chew Valley on 8<sup>th</sup> October. Many were observed overhead by people in their gardens. A female was watched through a window as it rested on a ridge tile just six feet from the observer. In August one swept past a parrot (see Escapes). A Blue Tit started to chase one but then veered away to allow Jackdaws to follow up. On Christmas Day one was chased by a flock of Starlings that didn't want to end up as Christmas pudding.

#### **Buzzard**

One hundred and twenty-six reports and seen in every month. 4<sup>th</sup> March produced no less than twelve along the River Avon. In fact most reports were in Spring, 24 of them being in March. Just two were in January and another two in November. Manor Road Community Woodland and an adjoining field produced 40 of the reports and a pair may have nested in that area. Over the town they were noted from West View Road, Balmoral Road, Wellsway, Daisy Close, Charlton Road and Handel Road. Also noted at Somerdale, Stockwood Vale, Queen Charlton, Charlton Fields, Redlynch Lane, the cycle track, the Mill Grounds, the sewage works and the Memorial Park.

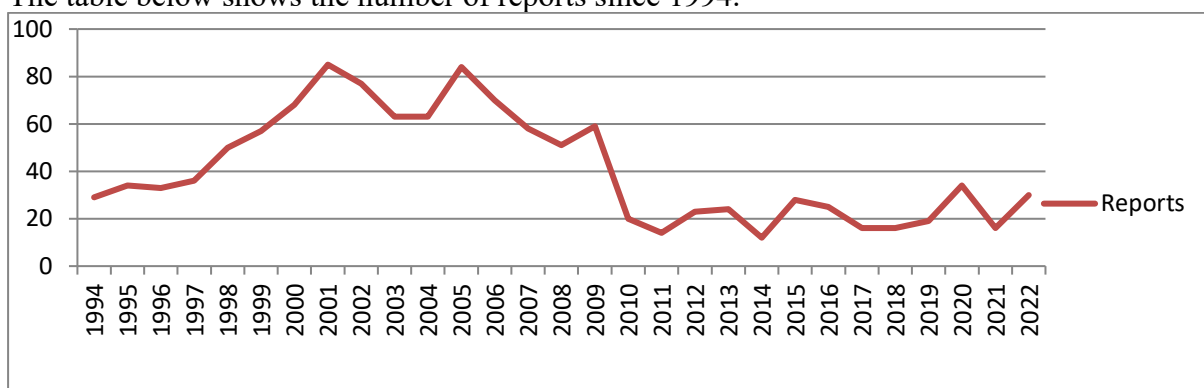
The following table shows the number of reports since 1985.



### Kestrel

Thirty records this year which is a substantial improvement over 2021. Thirteen were at Somerdale which is encouraging. They were seen in the Manor Road area, by the River Avon (particularly Boyd Bridge) on several occasions, and more unusual over the Memorial Park.

The table below shows the number of reports since 1994.



### Hobby

Seen on four occasions, three of which were around the Boyd Bridge area. Singles on 18<sup>th</sup> June, 20<sup>th</sup> August and 30<sup>th</sup> August. The site of the other one is not known but was on 30<sup>th</sup> September.

### Peregrine

An excellent 33 reports, similar to 2021. All but three were around the Boyd Bridge where only June failed to reveal any. An adult pair were seen on 28<sup>th</sup> February and 13<sup>th</sup> April. Two reports were from Somerdale in December and the other west of Long Wood heading towards Keynsham.

### Partridges and Pheasants

#### Grey Partridge

Birds were released from Kelston on 7<sup>th</sup> November, eight of which were foraging in a field to the south-west of Boyd Bridge four days later. No other reports.

#### Quail

One sang in a Barley field towards the east of Boyd Bridge on 8<sup>th</sup> and 9<sup>th</sup> June. It is our first report since 2011.

#### Pheasant

Often overlooked except by keen recorders. Such reports came from Stockwood Vale (20 or more in February) and a field off Manor Road. Others were noted in Chewton Keynsham, Queen Charlton, Somerdale and along the Swineford stretch of the River Avon.

## ***Rails***

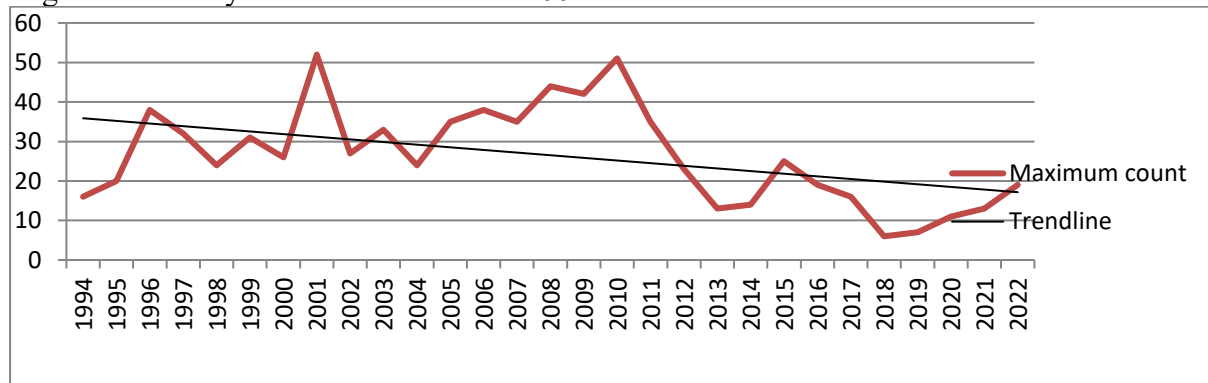
### **Water Rail**

One seen or heard on 14 occasions near Boyd Bridge from 16<sup>th</sup> October onwards. This is a very similar pattern to 2021. No other reports.

### **Moorhen**

The highest count along the Swineford stretch of the River Avon was 19 on 23<sup>rd</sup> January; this is the highest count for a long time. Although 12 were seen in February other counts along this stretch of the river were much lower. They were seen in the Memorial Park throughout the year, peaking at five on 8<sup>th</sup> November. They probably bred here as an immature bird was noted in November. They also bred at the roadside pond in Queen Charlton as evidenced by a pair with three chicks on 8<sup>th</sup> May. The pond by the Brassmill revealed three on 19<sup>th</sup> January and 12 were counted in the Mill Grounds on 30<sup>th</sup> November.

Highest counts by the River Avon since 1994 are as follows:.



### **Coot**

Just two reports. One at Avon Valley Country Park on 4<sup>th</sup> March and one at Somerdale two days later.

## ***Wading birds***

### **Golden Plover**

Seen on four occasions in the Boyd Bridge area but all too briefly. Thirty-five headed north on 29<sup>th</sup> January and nine north-east on 27<sup>th</sup> September. In December there was a red-letter day on 11<sup>th</sup> when 329 passed south in flocks of 11, 15, 17, 45, 50, 44, 8, 29, 48, 17 and 45 between 8:25 and 9:55. Three flew south on 14<sup>th</sup> December with a flock of Lapwings.

### **Lapwing**

As with the previous species, 11<sup>th</sup> and 14<sup>th</sup> December were they key days but numbers reversed. Golden Plover dominated on 11<sup>th</sup> supported by 94 Lapwing. On 14<sup>th</sup> Lapwing took the lead with 175 in flocks of 50, 90 and 35. All other reports were in single figures towards the end of the year. Noted on 12 days with a highest count of eight, all around Boyd Bridge.

### **Whimbrel**

One high to the south-west over Boyd Bridge on 22<sup>nd</sup> July.

### **Woodcock**

One somewhere, possibly by the River Avon, on 5<sup>th</sup> February. Another shot through Manor Road Community Woodland on 16<sup>th</sup> December.

### **Snipe**

An interesting report of between one and eight birds at dawn near Boyd Bridge between 8<sup>th</sup> and 18<sup>th</sup> December, always flushed by passers by. The only other report was on 19<sup>th</sup> December at Keynsham Lock so perhaps this is one of the birds on previous days.

### **Common Sandpiper**

One near Boyd Bridge on 11<sup>th</sup> April. Two were found on 19<sup>th</sup> April, one near Boyd Bridge and the other at the point where the River Chew enters the Avon. 5<sup>th</sup> May produced a further one near Boyd Bridge whilst the only returning migrant was along the Hanham stretch of the River Avon on 14<sup>th</sup> August.

### **Gulls**

#### **Kittiwake**

An exceptional record of this exclusively maritime bird but not our first. Previously there was one at Somerdale in 2000; before that one has to go back to 1957 when one was found in early March. This year's was at 7.30 a.m. on 22<sup>nd</sup> February when an adult passed over Boyd Bridge heading downstream.

#### **Black-headed Gull**

Although still very commonly seen, there were no big counts this year. The highest figures were 150 off Broadmead Lane on 2<sup>nd</sup> January and 125 over Manor Road Community Woodland on 10<sup>th</sup> February. The field by the River Avon often hold many birds after very wet weather or flooding but not this year; the highest count was 60 on 16<sup>th</sup> November. The last spring bird was on 20<sup>th</sup> March and the first returning one on 19<sup>th</sup> June. A bird carrying a metal ring on its left leg appeared in a Handel Road garden on 10<sup>th</sup> February; this may well be the same bird that has visited this garden in most years since 2014. Birds often use the pond in the Memorial Park bathing and waiting for food. One observer has suggested that the lower numbers in the second half of the year and the lower proportion of juveniles may have been the result of bird flu.

#### **Little Gull**

Another exceptional record when a first-winter bird flew upstream past Boyd Bridge at 7.35 a.m. tagging along behind a flock of 40 Black-headed Gulls. One doesn't have to go so far back for this species. Our only other record was at the same spot on 31<sup>st</sup> October 2020.

#### **Common Gull**

As with Black-headed Gull, the highest count was 150 off Broadmead Lane on 2<sup>nd</sup> January. Twenty were counted along the Swineford stretch of the River Avon on 21<sup>st</sup> February and seven on 21<sup>st</sup> March. The only report later in the year is of one near Boyd Bridge on 27<sup>th</sup> September although significant numbers were seen overhead on their way to roost.

#### **Lesser Black-backed Gull**

Always present around the town or flying over. Twelve by Broadmead Lane on 4<sup>th</sup> January and 16 on fields by the Swineford stretch of the River Avon on 23<sup>rd</sup> January. Sixteen were counted during a breeding birds survey in central Keynsham on 19<sup>th</sup> April. The 2020 and 2021 reports included a ringed bird (F900 black) in Handel Road. It came back again in 2022, this time on 26<sup>th</sup> July.

#### **Herring Gull**

Although always with us across the area, numbers were unspectacular. Six in the Memorial Park on 27<sup>th</sup> March was the highest followed by five in Daisy Close in July.

### **Pigeons**

#### **Feral Pigeon**

During survey work 41 were counted in the one kilometre square around central Keynsham on 19<sup>th</sup> January and 59 on 28<sup>th</sup> November. Twenty-seven set up home for a short while on a Park Road rooftop on 12<sup>th</sup> January. There were two exceptional reports that were found on a website; 200 in Manor Road Woodland on 11<sup>th</sup> December and 150 in (or from?) a Keynsham garden on 16<sup>th</sup> December.



### **Stock Dove**

Up to five seen in every month in Stockwood Vale. Two along the Swineford stretch of the River Avon on 23<sup>rd</sup> January and 16<sup>th</sup> November and one at Somerdale on 26<sup>th</sup> April. Up to a dozen heard or seen heading south over Boyd Bridge in October and November.

### **Woodpigeon**

Extremely common but no significant counts this year. Recorders in Stockwood Vale, Park Road, Daisy Close and Manor Road reported them in their gardens nearly every month. They bred in a Charlton Park garden. A breeding birds survey in central Keynsham on 19<sup>th</sup> April produced 40. Although there were no specific counts or dates, up to several hundred or more could be seen flying south over the Boyd Bridge area on many days in October and November.

### **Collared Dove**

Another widespread species but rarely in significant numbers. Nine in central Keynsham during winter survey work on 28<sup>th</sup> November was the highest.

### **Owls**

#### **Barn Owl**

Five reports from five different places so it is unlikely that there were any resident birds in our area in 2022. One flew across a garden in Stockwood Vale on 20<sup>th</sup> February, one hunting at dusk at Somerdale on 14<sup>th</sup> June, one in Manor Road in October, another near Boyd Bridge on 12<sup>th</sup> December and one at Hicks Gate on 17<sup>th</sup> December.

#### **Little Owl**

Often found in the Boyd Bridge area, usually along the Keynsham/Saltford boundary hedge towards the river. One noticed by a passer by around Courtenay Road in Autumn.

#### **Tawny Owl**

Frequently encountered in Stockwood Vale throughout the year where two males and a female were heard on 16<sup>th</sup> January. Regularly encountered in Manor Road and the adjoining woodland. On 31<sup>st</sup> August a dead bird was seen on the road between the fire station and Hicks Gate. Noted sporadically around the Boyd Bridge area.

### **Kingfishers**

#### **Kingfisher**

Forty-six reports that have delighted many people, mostly in the Memorial Park. Frequent thorough views from Boyd Bridge resulted in one being seen on most days. There was just one report from the Hanham stretch of the River Avon. The only count of two was in the Marina on 12<sup>th</sup> December. Seen in the Mill Grounds on three occasions. One in Manor Road Community Woodland on 6<sup>th</sup> February was a good find although not the first there.

### **Woodpeckers**

#### **Great Spotted Woodpecker**

Well represented in the area with 60 reports. Drumming first heard in the Memorial Park on 1<sup>st</sup> January, then by the Marina on 16<sup>th</sup>, Chewton Place on 10<sup>th</sup> April and Manor Road Community Woodland on 24<sup>th</sup>. Copulation seen in Stockwood Vale on 28<sup>th</sup> April. Noted in various other areas; along the Swineford stretch of the River Avon, Chewton Keynsham, by the cycle track, Somerdale, the stony lane to Chewton Place and north of Queen Charlton. Birds were seen at the railway station on 2<sup>nd</sup> and 8<sup>th</sup> December and in gardens in Handel Road, West View Road, Balmoral Road and Wellsway.

#### **Green Woodpecker**

Found in every month in Stockwood Vale. Most were singletons but two on two occasions.

Noted on ten occasions in Manor Road and the adjoining woodland. Also seen or heard by Broadmead Lane, Somerdale, the Swineford stretch of the River Avon (feeding on ants), the cycle track, Chewton Keynsham, the stony lane to Chewton Place, Chewton Keynsham, the Mill Grounds, Redlynch Lane and the Memorial Park.

### ***Larks***

#### ***Woodlark***

Two were reported from Manor Road Community Woodland on 24<sup>th</sup> October. This is rather unlikely and a description is required by the Avon Bird recorder so whether or not it will be accepted should emerge before long. Whether or not it is ratified, it would not be the first for this area as two were heard and seen at Queen Charlton many years ago, on 6<sup>th</sup> July 1970.

#### ***Skylark***

Somerdale Hams has been a good spot for them this year; seven on 12<sup>th</sup> March strongly suggests that breeding occurred. Song was also heard along the Swineford stretch of the River Avon and at Queen Charlton. One near the sewage works on 17<sup>th</sup> December.

### ***Swifts and hirundines***

#### ***Swift***

Not seen until 8<sup>th</sup> May (our latest) when they appeared over Manor Road Community Woodland and West View Road. The following day about 20 drifted south over the town at 9 a.m. but didn't return so must have been passing through. A screaming party was heard on 17<sup>th</sup> May. Numbers then seemed to be rather low until about 30 were noted over Park Road on 19<sup>th</sup> July. On 11<sup>th</sup> June birds started to investigate nest boxes in Stockwood Vale. The last one was over Somerdale on 10<sup>th</sup> August. Also noted around Boyd Bridge and Daisy Close.

The following table shows earliest dates since 2004:

2004	2005	2006	2007	2008	2009	2010	2011	2012	2013	2014	2015	2016	2017	2018	2019	2020	2021	2022
23/4	24/4	21/4	23/4	26/4	25/4	18/4	21/4	29/4	26/4	4/5	2/5	3/5	19/4	3/5	30/4	2/5	4/5	8/5

#### ***Sand Martin***

First seen over Boyd Bridge on 16<sup>th</sup> March, then often until 27<sup>th</sup> September.

#### ***Swallow***

Not seen in any significant numbers. The first was near Boyd Bridge on 6<sup>th</sup> April. On 7<sup>th</sup> May four were investigating nests in a farm at the bottom of Stockwood Vale. Ten at Somerdale on 12<sup>th</sup> August was the highest count. Also noted over Balmoral Road, Manor Road, Charlton Fields and along the Swineford stretch of the River Avon.

#### ***House Martin***

The breeding colony in Queens Road wasn't counted this year but several sightings over the town probably relate to this colony. Twelve wheeling around Park Road in the evening of 5<sup>th</sup> September would have been one of these, perhaps those over Daisy Close as well. A bird picked up mud in Stockwood Vale on 7<sup>th</sup> May. The last sighting of 19 over Boyd Bridge on 6<sup>th</sup> October was of birds migrating through the area.

### ***Pipits and Wagtails***

#### ***Meadow Pipit***

Fifty by the River Avon, Swineford direction on 23<sup>rd</sup> January. Encountered in the first half of the year into April. In September, early morning stints at Boyd Bridge sometimes produced several hundred flying south. Also noted in Manor Road Community Woodland, Somerdale and the sewage works.

#### ***Tree Pipit***

A nice run of single birds over Boyd Bridge between 11<sup>th</sup> August and 5<sup>th</sup> September.

A report of two at the Hams on 11<sup>th</sup> November seems unlikely as this would be at least a month later than the previous Avon record.

### **Yellow Wagtail**

Five reports from the Boyd Bridge area in the autumn with a maximum of five on 3<sup>rd</sup> September.

### **Grey Wagtail**

Noted many times in the Memorial Park throughout the year but not between 4<sup>th</sup> June and 19<sup>th</sup> September so perhaps they did not breed there this year. Three there on 29<sup>th</sup> November. Breeding did take place on Boyd Bridge itself. Five by Broadmead Lane on 2<sup>nd</sup> January was a good count. Gardens in Handel Road (once), Balmoral Road (once) and Stockwood Vale (twice) were visited. Others were seen in the Mill Grounds and the sewage works.

### **Pied Wagtail**

Forty at the sewage works on 17<sup>th</sup> December was the highest number followed by 32 nearby in Broadmead Lane on 2<sup>nd</sup> January. They are often there but often not easy to clearly see. Gardens in Daisy Close, Manor Road and Stockwood Vale hosted them on occasions. Also noted on Wellsway School playing field, Manor Road Community Woodland, Somerdale and by the Swineford stretch of the River Avon.

### ***Wrens, Dippers and Accentors***

#### **Wren**

Winter bird surveys revealed 11 by the River Avon in the first winter period and three in the second. In central Keynsham there were two in the first winter period but none in the second. Breeding bird surveys produced 11 in central Keynsham and 15 at Somerdale. Birds were also noted at many other sites.

#### **Dunnock**

Winter bird surveys produced six by the River Avon in the first winter period and three in the second. In central Keynsham the figures were four and one respectively. Breeding bird surveys revealed four in central Keynsham and three at Somerdale. Commonly seen or heard elsewhere.

### ***Thrushes***

#### **Robin**

Winter bird surveys produced nine by the River Avon in the first winter period and 15 in the second. In central Keynsham the figures were eight and 13. Breeding bird surveys produced 18 in central Keynsham and four at Somerdale. Eleven in Manor Road Community Woodland on 3<sup>rd</sup> April, and five during the RSPB Birdwatch in January.

#### **Redstart**

One near Boyd Bridge on 13<sup>th</sup> April. Always a delight to see.

#### **Wheatear**

One (unusually) on a tree top near Boyd Bridge on 15<sup>th</sup> April. Three in a field at the top of Charlton Road on 7<sup>th</sup> May.

#### **Stonechat**

A nice scattering this year. Two at Somerdale in January and one or more in Chewton Keynsham on 6<sup>th</sup> March. One at Charlton Fields on 8<sup>th</sup> May and another in a barley field and adjacent hedge in the Boyd Bridge area on 8<sup>th</sup> June are particularly interesting as this is the breeding season; however, there was no sign as such. On 20<sup>th</sup> and 28<sup>th</sup> October one or two were present along the Swineford stretch of the River Avon. Somerdale accommodated up to

four between 17th November and 8th December,

### **Song Thrush**

The year started well with two singing in the Memorial Park on New Year's Day. A few days later one fed on Ivy berries in West View Road. Others were noted in Manor Road Community Woodland, Chewton Keynsham, Somerdale, Stockwood Vale, Charlton Fields and near Boyd Bridge.

### **Redwing**

Very ordinary numbers this year except for 100 in the Memorial Park on 10th November. In the first part of the year small numbers were found in various spots. Following last year's exceptionally late bird on 30th April that was the latest ever in Avon by five days, one at Boyd Bridge on 29th didn't quite match it. The first autumn bird was on 27th September. There were 44 along the Swineford stretch of the River Avon on 16th November. Five used a West View Road garden on 27th December but that was the only occasion they were seen there which is unusual.

### **Mistle Thrush**

Twelve reports as in 2021. A garden in Stockwood Vale was used on several occasions. There were two by the pond in the Memorial Park on 4th March and birds were present in Manor Road Community Woodland a few times. Noted around Boyd Bridge on many occasions.

### **Spotted Flycatcher**

One near Boyd Bridge on 1st September. Very scarce now. One was seen in 2020 but before that 2014.

### **Fieldfare**

Only two records have come to light in the first winter period; a Manor Road garden was visited in January, and we then had to wait until 31st March when returning migrants were visible from Bridge. The same spot revealed 51 on 19th October after arriving from northern Europe. Thirty were counted in Manor Road Community Woodland on 25th October and 12 in a Manor Road garden on 17th December. Birds fed on fallen apples in Stockwood Vale on several days in December.

### **Blackbird**

Winter bird surveys produced eight by the River Avon in the first winter period and four in the second. In central Keynsham the figures were three in the first period and five in the second. Breeding bird surveys produced 14 in central Keynsham and eight at Somerdale. Nine counted as part of the RSPB's garden birdwatch in Stockwood Vale in January was notable. A leucistic bird was found in Manor Road Community Woodland.

### **Warblers**

#### **Cetti's Warbler**

One calling in Stockwood Vale on 2nd May was a surprise, and it was heard again five days later. As the year progressed another was found on 27th September and a few times more until 5th November.

### **Chiffchaff**

Only noted once in the first winter period – on 2nd January. The first spring arrival was one singing in a West View Road garden on 9th March after which numbers increased until the end of March, ten in Manor Road Community Woodland being the highest number. Gardens in Daisy Close, Balmoral Road and Handel Road were visited occasionally. Towards the end of the year they were seen in the Memorial Park and along the Swineford stretch of the River

Avon. Six at the sewage works on 17<sup>th</sup> December were obviously overwintering birds as they have done so on many occasions over the years.

### **Siberian Chiffchaff**

A bird noted on several days between 27<sup>th</sup> October and 3<sup>rd</sup> November near Boyd Bridge. Song was heard as well as calls.

### **Yellow-browed Warbler**

One just upstream from Boyd Bridge on 18<sup>th</sup> November. This is the third report of this species in our area, all around the Boyd Bridge area.

### **Willow Warbler**

The first appeared in a town garden on 23<sup>rd</sup> March and the next in the Boyd Bridge area a week later. A singing bird in West View Road on 4<sup>th</sup> April was nice to hear as was one in a Manor Road garden. Spring managed to produce two more reports, one in Manor Road Community Woodland and the other around Boyd Bridge. We then had to wait until 1<sup>st</sup> August and then 14<sup>th</sup> September.

### **Reed Warbler**

Often seen or heard around Boyd Bridge during the summer including a late season successful brood. Last noted on 14<sup>th</sup> September.

### **Blackcap**

In the first winter period they were seen on seven days in gardens in Balmoral Road, Daisy Close, Charlton Park, Stockwood Vale and West View Road. One in Manor Road Community Woodland on 20<sup>th</sup> March may have been the first spring arrival. Whether or not one that sang in a West View Road garden on 15<sup>th</sup> and 16<sup>th</sup> April was a new arrival or a lingering winter bird is unclear. They continued to be seen and heard across the area during the summer, but specific counts were not made. As winter arrived one appeared in Handel Road in November and again in December and a male in West View Road. Two used an unknown Keynsham garden on 16<sup>th</sup> December.

### **Garden Warbler**

One in a Manor Road garden in August was the only report.

### **Lesser Whitethroat**

One singing in Manor Road Community Woodland on 8<sup>th</sup> May and another at Somerdale in June. Noted on six occasions near Boyd Bridge between 22<sup>nd</sup> May and 18<sup>th</sup> June, then another in the same area on 27<sup>th</sup> August.

### **Whitethroat**

Two at Somerdale on 26<sup>th</sup> April and ten including eight singing males on 13<sup>th</sup> June during breeding birds survey work. Also noted in a field at the top of Charlton Road, Stockwood Vale, the Boyd Bridge area, Queen Charlton and along the Swineford stretch of the River Avon. One in Manor Road Community Woodland on 2<sup>nd</sup> October was rather late.

### **'Crests'**

#### **Firecrest**

A nice addition to this year's report. One that overwintered mostly along the cycle track towards Saltford made a visit to Boyd Bridge on 25<sup>th</sup> January. Our previous one was in 2009.

#### **Goldcrest**

Just a scattering of reports from Handel Road, the Memorial Park, Stockwood Vale, Manor Road Community Woodland, the Marina and the Boyd Bridge area. Singing in West View

Road on Christmas Day.

### ***Tits***

#### **Long-tailed Tit**

There was a nice series of records from Manor Road Community Woodland, particularly in October and November, the highest number being 24 on 6<sup>th</sup> October. They also visited an adjacent garden in seven months of the year. Thirty in the Memorial Park on 12<sup>th</sup> October was also a good count. Also found in several other places without specific counts being made.

#### **Blue Tit**

Winter bird surveys revealed nine by the River Avon in the first winter period and 13 in the second. In central Keynsham the figures were seven and five respectively. Breeding bird surveys revealed only four in central Keynsham and eight at Somerdale. Nesting occurred in Charlton Park and doubtless elsewhere. The RSPB Birdwatch in Stockwood Vale in January produced eight birds.

#### **Great Tit**

A breeding bird survey revealed ten at Somerdale, but other surveys produced very few. In a Stockwood Vale garden one repeatedly looked at its reflection in the wing mirror of a Landcruiser. At the same location a pair decided to take up residence in a Swift nestbox where they bred successfully.

#### **Coal Tit**

Seen in Stockwood Vale in eight months of the year where a fledgling feeding on peanuts allowed the owner to get very close. Also visited a Manor Road garden in six months of the year. Bred in Balmoral Road. On 23<sup>rd</sup> July a dead juvenile was picked up in the High Street, probably after hitting a shop window.

### ***Nuthatches and Treecreepers***

#### **Treecreeper**

Often difficult to locate so it was nice to receive ten reports. Two birds were seen along the Swineford stretch of the River Avon on 23<sup>rd</sup> February and also in the Boyd Bridge area on several occasions. On 6<sup>th</sup> March single birds were found in the Memorial Park and at Chewton Keynsham. On 21<sup>st</sup> March there was one at Somerdale, and the Memorial Park again on 25<sup>th</sup> November. The first ever record in Stockwood Vale was on 20<sup>th</sup> April, followed by a pair seven days later and again on 3<sup>rd</sup> May.

#### **Nuthatch**

One heard from Boyd Bridge in the Bitton area on 23<sup>rd</sup> and 25<sup>th</sup> March. Another in the Memorial Park on 6<sup>th</sup> March.

### ***Crows***

#### **Magpie**

Winter bird surveys revealed ten by the River Avon in the first winter period and 12 in the second. In central Keynsham the figures were four and 29 respectively. Breeding bird surveys revealed four in central Keynsham and 33 at Somerdale. This high number is due to the timing of the survey coinciding with the cutting of the meadow on 13<sup>th</sup> June. Other significant counts came from a West View Road garden (10), Daisy Close (10, 12 and 16), Stockwood Vale (10) and Manor Road Community Woodland (22).

#### **Jay**

Found in Stockwood Vale in all months of the year and also very regularly around Boyd Bridge. Elsewhere, three occasions in Manor Road Community Woodland and five in the

Memorial Park. Three at Somerdale on 18<sup>th</sup> October. Also noted by the Cycle track and at Chewton Keynsham.

### **Jackdaw**

Winter bird surveys revealed eight by the River Avon in the first winter period and 25 in the second. In central Keynsham the figures were 28 and 65 respectively. Breeding bird surveys revealed 30 in central Keynsham and 22 at Somerdale. Evening flocks in winter are often encountered. One hundred were counted over Handel Road and West View Road in February. On 12<sup>th</sup> November 200 used a Sycamore as a staging post before moving off to a permanent roost. Many other sightings across the area.

### **Rook**

Fifteen nests were used in Manor Road Community Woodland and 23 near Dapps Hill. Sixty were counted in Manor Road Community Woodland on 6<sup>th</sup> February and 25 in Daisy Close in August. A parliament of 25 gathered on a tree in Handel Road on 15<sup>th</sup> March.

### **Carrion Crow**

Winter bird surveys revealed 18 by the River Avon in the first winter period and 31 in the second. In central Keynsham the figures were four and nine respectively. Breeding bird surveys revealed ten in central Keynsham and 17 at Somerdale. Significant counts were 55 in Manor Road Community Woodland on 26<sup>th</sup> October and over 30 on trees in a Stockwood Vale garden in February.

### **Raven**

Forty-six reports this year. In 1999 there were none! A pair nested at Chewton Place again. Most reports were of one or two birds although four passed over the town on 22<sup>nd</sup> January. Sightings were widespread; Handel Road, Broadmead Lane, Chewton Keynsham, Balmoral Road, the cycle track, Queen Charlton, Somerdale, Manor Road Community Woodland and Boyd Bridge.

### **Mixed Corvids**

A flock of 80 fed on the ground by Manor Road Community Woodland on 24<sup>th</sup> August. On 27<sup>th</sup> December there were 90 by the stony lane that runs down to Chewton Place (mostly Rooks) and 60 nearby in the Mill Grounds (mostly Jackdaws).

### **Starling**

None were found by the River Avon during winter bird surveys but 12 in the second. In central Keynsham the figures in the two winter periods were 38 in the first and 50 in the second. Breeding bird surveys revealed 26 in central Keynsham and four at Somerdale. Significant counts included 52 in Daisy Close, 130 on Park Road rooftops (on 1<sup>st</sup> September), 150 at Queen Charlton (on 14<sup>th</sup> March), 80 in Manor Road Community Woodland (on 11<sup>th</sup> December and 150 from an unspecified garden (on 13<sup>th</sup> November).

### ***Dipper***

A welcome return to this report after not being seen last year. One emerged from the River Boyd on 6<sup>th</sup> January and another flew downstream from the same spot on 4<sup>th</sup> March heading towards the town. Also photographed in the Memorial Park on 14<sup>th</sup> December.

### ***Sparrows***

#### **House Sparrow**

Winter bird surveys revealed 16 in central Keynsham in the first winter period and 21 in the second. Breeding bird surveys revealed 43 in central Keynsham. The only other report was of birds with young in Park Road and 32 in Manor Road Community Woodland.

## ***Finches***

### **Chaffinch**

No significant number, the highest being eight in Manor Road Community Woodland on 13<sup>th</sup> November. A bird singing by the River Avon on 23<sup>rd</sup> January was very early. Also noted in the Memorial Park, Balmoral Road, Stockwood Vale, Daisy Close, Manor Road and around Boyd Bridge.

### **Brambling**

A nice run around Boyd Bridge between 21<sup>st</sup> January and 9<sup>th</sup> March, and then between 12<sup>th</sup> October and 16<sup>th</sup> November. Most of them were passing and no counts were made.

### **Hawfinch**

One flew north over Boyd Bridge on 12<sup>th</sup> November. This is very similar to 2021 when one was noted three days earlier from the same place.

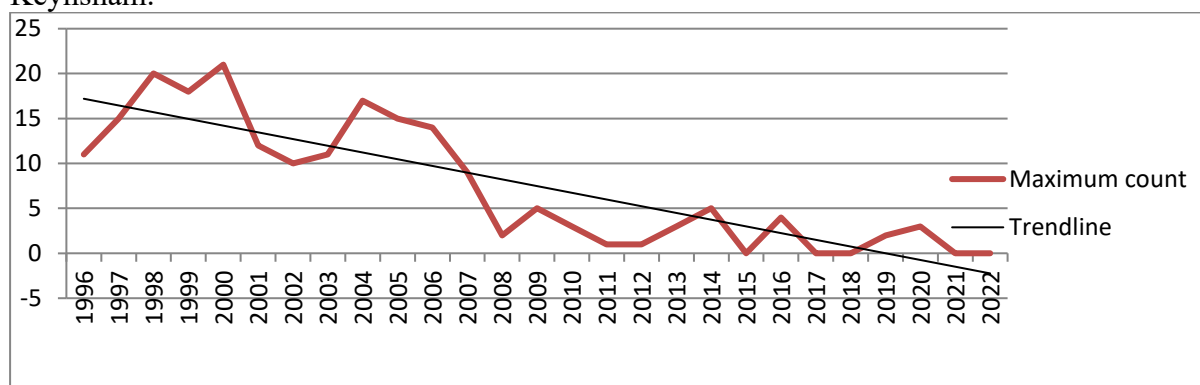
### **Bullfinch**

As in 2021, only seen four times. Two of these were in Manor Road Community Woodland and the other around the Boyd Bridge area. It's worth looking closely for this shy species as the shortage of sightings give rise for concern.

### **Greenfinch**

Noted in ten months of the year in Stockwood Vale. Other reports were rather spasmodic. Park Road and West View Road gardens were visited on a number of occasions. Also noted in Daisy Close, by the River Avon, Manor Road Community Woodland and Queen Charlton.

The following graph shows the decline as measured by the breeding bird survey in central Keynsham.



### **Goldfinch**

Very spasmodic. Winter bird surveys revealed 32 by the River Avon in the first winter period and 55 in the second. In central Keynsham the figures were six and two respectively. Breeding bird surveys revealed three in central Keynsham and six at Somerdale. Thirty in Handel Road on 10<sup>th</sup> January, 24 in Manor Road Community Woodland on 14<sup>th</sup> February, 20 in the Memorial Park on 2<sup>nd</sup> November and 21 in Daisy Close in January.

### **Siskin**

Rather short on numbers this year, and all records come from Boyd Bridge. One to three on many days up to 18<sup>th</sup> April, then small numbers in October and November. Eighteen were counted on 2<sup>nd</sup> November.

### **Linnet**

Often seen around Boyd Bridge but not elsewhere. There was one significant exception when



250 were seen in Broadmead Lane on 3<sup>rd</sup> April. This was our highest count since 1998.

### **Redpoll**

Many reports up to 11<sup>th</sup> April and then again from 12<sup>th</sup> October, all around Boyd Bridge. There were no large numbers, the highest being 11 on 11<sup>th</sup> March.

### ***Buntings***

#### **Corn Bunting**

Two very unusual records, both flying birds in the Boyd Bridge area. One on 21<sup>st</sup> April and the other 30<sup>th</sup> October. Our last record was at Queen Charlton in 2007 but before then one has to go back to 1976!

#### **Yellowhammer**

Difficult to find this year but perhaps missed around the Queen Charlton area. Often seen around the Boyd Bridge area, and four in Manor Road Community Woodland on 11<sup>th</sup> December.

#### **Reed Bunting**

One at Somerdale on 26<sup>th</sup> April but no other records at this location although the habitat is suitable. All reports from the Boyd Bridge area were outside the breeding season.

### **Escapes**

A parakeet with a long pointed tailed called as it flew over Handel Road on 6<sup>th</sup> May. An African Grey Parrot was spotted off Park Road in August.

## **BUTTERFLIES**

### ***Skippers***

#### **Small Skipper**

Only noted in town gardens on 11<sup>th</sup>, 19<sup>th</sup> and 20<sup>th</sup> July so the most likely places were obviously not searched at the right time.

#### **Large Skipper**

Seen in Manor Road Community Woodland, Somerdale and along the Swineford stretch of the River Avon (six on 16<sup>th</sup> June).

### ***Whites***

#### **Brimstone**

First seen on 14<sup>th</sup> March by the Ambulance station and a nearby garden by two people. The same butterfly, perhaps. Also in March in Dapps Hill, Charlton Park and Manor Road Community Woodland. The middle of April produced nine in the latter site. Four in the Mill Grounds on 30<sup>th</sup> April was another reasonable count. A female laid eggs on Alder Buckthorn in a West View Road garden on 19<sup>th</sup> May. There were a few more sightings until 28<sup>th</sup> May, then a gap until 20<sup>th</sup> July when the new generation started to appear. A male at Somerdale on 18<sup>th</sup> October was rather late but was surpassed by another in Balmoral Road on the extremely late date of 13<sup>th</sup> November. Also noted in Charlton Park, Stockwood Vale, Handel Road and the stony lane that runs down to Chewton Place.

#### **Orange Tip**

First noted on 9<sup>th</sup> April in the Memorial Park, then in Manor Road Community Woodland a week later. A female laid eggs on Garlic Mustard in a West View Road garden. A few others were observed until 28<sup>th</sup> May at Chewton Keynsham, Stockwood Vale, the stony lane that runs down to Chewton Place and a Handel Road garden.

#### **Large White**

As usual no counts were made due to their similarity with other species and the fact that they are all common. Identified between 24<sup>th</sup> April and 18<sup>th</sup> September.

#### **Small White**

As with the previous species, under recorded. The earliest was on 30<sup>th</sup> March and the latest on 7<sup>th</sup> October.

#### **Green-veined White**

Three in the Mill Grounds on 30<sup>th</sup> April. Then identified up to 23<sup>rd</sup> July at Queen Charlton. Somerdale and gardens in Handel Road and West View Road.

### ***Blues***

#### **Common Blue**

Just two reports this year. A male in Manor Road Community Woodland on 24<sup>th</sup> April and another along the Swineford stretch of the River Avon on 16<sup>th</sup> June.

#### **Small Copper**

Two in Meadow Wood near Field Grove Farm on 19<sup>th</sup> September and another two in the Mill Grounds on 8<sup>th</sup> October.

#### **Holly Blue**

Seventy-one records. The first generation started on 9<sup>th</sup> April in gardens in Park Road and Handel Road. West View Road joined in on 15<sup>th</sup> April where there were many sightings until 19<sup>th</sup> May. The final one of this generation was probably on 29<sup>th</sup> May with the first of the second generation appearing on 16<sup>th</sup> June. However, it is difficult to be sure as the two

generations can be quite close. It wasn't just gardens that hosted them. They were also found in Manor Road Community Woodland, the stony lane that runs down to Chewton Place, the Mill Grounds, by the River Avon and the new Fox and Hounds Lane nature reserve. Last seen on 11<sup>th</sup> September.

### ***Nymphalids***

#### **Small Tortoiseshell**

An early one along the Swineford stretch of the River Avon on 4<sup>th</sup> March was a nice encounter. A total of just 22 reports but spread over several places up to 23<sup>rd</sup> July. None subsequently found. Locations were the Hanham stretch of the River Avon, Chewton Keynsham, the Mill Grounds, Manor Road Community Woodland, Somerdale, Handel Road, Balmoral Road, West View Road, Rock Road and Lays Drive. Seven between Bristol Road and the rugby ground on 7<sup>th</sup> June exceeded other counts.

#### **Peacock**

As with Small Tortoiseshell, the first sighting was on 4<sup>th</sup> March, this time in Handel Road. They continued to be found up to 8<sup>th</sup> May when there was a gap until 20<sup>th</sup> July when the next generation began to show. The last was on 14<sup>th</sup> August. The highest count was eight in Manor Road Community Woodland and seven in Stockwood Vale. Three clumps of larvae were seen in the Mill Grounds on 30<sup>th</sup> April.

#### **Comma**

An early start to the year when one appeared in a West View Road garden. Then one the following day in Manor Road Community Woodland and again two days later. Another couple of sightings until 8<sup>th</sup> May, then a gap until 13<sup>th</sup> June when the next generation started. A few sightings in July up to 21<sup>st</sup> and then none until the last one on 24<sup>th</sup> August. Sites included the Swineford stretch of the River Avon, Handel Road, Charlton Park and Somerdale.

#### **Red Admiral**

Recorded only 15 times. Two were in January and February so they must have overwintered. One of them flew through a Handel Road garden on 16<sup>th</sup> January which was a warm day following several frosty ones. The other was in Stockwood Vale. We had to wait until 19<sup>th</sup> May for the next, then one in June and several in mid July. One in September, then four in October up to 26<sup>th</sup>. Locations were a West View Road garden, Manor Road Community Woodland, Lays Drive and Dapps Hill.

#### **Painted Lady**

Just the one. It was in a West View Road garden on 17<sup>th</sup> July.

### ***Browns***

#### **Ringlet**

Found between 21<sup>st</sup> June and 21<sup>st</sup> July in just two places, Handel Road and Manor Road Community Woodland.

#### **Speckled Wood**

Unlike 2021, the season got under way very early when one was seen in Manor Road Community Woodland on 24<sup>th</sup> March and in Balmoral Rod the following day. These were our earliest on record, the previous being on 26<sup>th</sup> March thirty-two years ago. They were then seen spread evenly in every month until 26<sup>th</sup> October. One bigger count of 13 in Manor Road Community Woodland on 16<sup>th</sup> April. Other were in the stony lane than runs down to Chewton Place, the Mill Grounds, Steel Mills, the Hawthorns, Stockwood Vale, the Swineford stretch of the River Avon, Chewton Keynsham, by the cycle track, Meadow Wood and West View Road, Park Road and Handel Road.

## **Meadow Brown**

First seen in Manor Road Community Woodland on 12<sup>th</sup> June; many were found there on 21<sup>st</sup> July. The Swineford stretch of the River Avon revealed 53 on 16<sup>th</sup> June. Also found at Somerdale and in Stockwood Vale. Gardens in West View Road and Handel Road were visited on several occasions. Not noted after 10<sup>th</sup> August.

## **Gatekeeper**

No specific counts took place, but they were seen between 12<sup>th</sup> July and 12<sup>th</sup> August in Manor Road Community Woodland, Somerdale and Handel Road and Charlton Park gardens.

## **MAMMALS**

### **Bats**

The only detailed records are from Stockwood Vale where an Echometer was used again. It identified Common Pipistrelle, Nathusius Pipistrelle, Soprano Pipistrelle, Lesser Noctule and Serotine. The only other report was from West View Road of a small unidentified bat near dusk.

### **Badger**

Only reported from Stockwood Vale where they are very regular. First seen on 15<sup>th</sup> January. By 6<sup>th</sup> March there was a lot of activity, sometimes three together. On 18<sup>th</sup> May there was a brief altercation when the Fox snapped at the rear end of a Badger. A sett was found some way from the garden where the sightings were made. Sighting continued to the end of the year.

### **Roe Deer**

Recorded on 25 occasions throughout the year, most of which were in Stockwood Vale. A male's new growth of antlers was noticeable by 10<sup>th</sup> January and another larger male appeared the following day. Three deer on 16<sup>th</sup> January consisted of a male, an adult female and a juvenile female. The first young of the year appeared on 23<sup>rd</sup> June. A crafty one was discovered pulling down a peanut feeder in a hedge. Away from this site, one or two were seen at Somerdale on three occasions, up to seven were seen in the field alongside the Swineford stretch of the River Avon, three were seen at Hick's Gate in March and one in Manor Road Community Woodland on 29<sup>th</sup> May.

### **Muntjac**

All reports were in Stockwood Vale garden. This included five days in January when both a male and female were observed. Two males were present in March but few sightings until December when a pair with a young male offspring visited the garden.

### **Fox**

The trail camera that had been used in Handel Road since 2020 was switched on regularly resulting in them being recorded on 99 occasions. Mostly one or two but three on 12<sup>th</sup> May including a cub. Gardens not too far away in Balmoral Road, Park Road, West View Road, Charlton Park and Albert Road produced a total of 13 reports and would probably be considerably more if a similar trail camera was installed. Often seen in Stockwood Vale throughout the year where one was described as a happy female. Cubs were first seen on 4<sup>th</sup> May, and four on 27<sup>th</sup>. One cub was upset by a visiting Badger.

### **Hedgehog**

The camera trap in Handel Road that recorded the Foxes also found Hedgehogs on 31 occasions from a cold 10<sup>th</sup> February to 24<sup>th</sup> December. Unfortunately one drowned in a pond although stones are in place to prevent this. A Stockwood Vale garden hosted one or two throughout the year. It was obvious that one was infected by ticks in March. A Hedgehog and a Badger fed alongside each other in April. A Fox cub was bemused by a Hedgehog on 2<sup>nd</sup>

June. Also noted in St Francis Road on three occasions and West View Road five times. The aftermath of road accidents were found on the junction of Handel Road and Park Road on 18<sup>th</sup> May, West View Road and Charlton Road on 11<sup>th</sup> June and on Park Road on 3<sup>rd</sup> October.

### **Grey Squirrel**

A Handel Road garden was once more home to squirrels throughout the year. Often singly but occasionally two and once three when they chased around like excited children. An injured one was found in Stockwood Vale. Firstly, it was housed in a Hedgehog box and provided with food but three days later it was taken to a vets where it was euthanised. Often seen elsewhere but not actually recorded as evidenced by no records from Manor Road Community Woodland where they are often seen. Four noted in the Memorial Park and also found in Chewton Keynsham, Somerdale, the Swineford stretch of the River Avon and a West View Road garden.

### **Mole**

Molehills noted in the usual locations in the Mill Grounds, both stretches of the River Avon, the Brassmill, the Memorial Park, Somerdale, a field to the north of Bristol Road and Manor Road Community Woodland.

### **Wood Mouse**

Only recorded twice, both in a Charlton Park garden. One was on peanuts in June and the other seen in August.

### **Brown Rat**

A Stockwood Vale garden attracted them throughout the year. In March they helped themselves to peanuts that had been put out for more welcome nocturnal visitors. By April they nested in sleeper beds and taking Fox food at night although they did disappear when the Foxes arrived. They were seen in the Memorial Park from time to time where one became food for a Grey Heron. One at the station on 6<sup>th</sup> March.

### **Otter**

One photographed in the Memorial Park on 11<sup>th</sup> June and another seen in the River Chew from Avon Mill Lane bridge during a bird survey.

### **Hare**

One at Somerdale emerged from under the railway line on 21<sup>st</sup> April.

### **Seal**

A ridiculous record of one in the River Chew in the Memorial Park on 2<sup>nd</sup> January but couldn't get past the weir. Believe it or not, this wasn't our first as there is a previous report of one in August 2005.

## **FLORA**

Very little recording took place this year so that results in a significant gap in this report.

### ***Manor Road Community Woodland***

Five **Scarlet Elf Cups** on 31<sup>st</sup> January and eight on 13<sup>th</sup> March. **Bladder Campion, Marsh Marigold, Three-cornered Leek and Water-plantain.** It looked as though **Aspen** was dying due to the hot weather and drought. The pond nearly dried out completely, so much so that it was possible to walk to the centre on the residual mud.

### ***Stockwood Vale***

**Bath Asparagus, Bluebell, Cowslip, Cut-leaved Crane's-bill, Goldilocks Buttercup, Ladies Smock, Primrose, Wood Anemone, Woolly Thistle and Yellow Archangel.**

### *Somerdale*

**Common Poppy, Dyer's Rocket, Greater Mullein, Mistletoe, Narrow-leaved Everlasting Pea, Purple Loosestrife, twenty Small Teasel, Tansy and Valerian.**

### *Century Ponds*

**Greater Horsetail, Square-stalked St John's-wort and Yellow Flag.**

### *Rough patch behind the Health Centre*

**Common Vetch, Cornsalad, Goat's-beard and three Pyramidal Orchids.**

### *Memorial Park*

**Ladies Smock, Mistletoe and Water Crowfoot.**

### *River Avon*

**Orange Balsam and Mistletoe. Danish Scurvy-grass on the Willsbridge Road bridge.**

### *Elsewhere*

**Marsh Marigold** by the Brassmill pond. **Wall Pennywort** and many **Cowslips** in Chewton Keynsham. **Ribbed Melilot** by the cycle track. **Wetted Thistle** in the Mill Grounds. **Bath Asparagus** north-east of Queen Charlton.. **Three-cornered Leek** by the pavement in St Clements Road.

About 400 **Cowslips** now flower in a Handel Road garden.

Nine **Apple-of-Peru** plants appeared in the rough edge that was cornered off during building work in Mayfields. **Broad-leaved Spurge** grew in the base of the south-west wall of Ashton Way car park.

A **Pyramidal Orchid** appeared in Teviot Road and 76 **Bee Orchids** in a lawn in Dragon's Hill Court, much to the surprise of residents.

**Robin's Pincushion Gall** on Dog Rose in a West View Road garden.

**Yellow Brain Fungus (*Tremella mesenterica*)** in Meadow Wood.

## **MOTHS**

The moth traps that have previously been operated in Handel Road and Balmoral Road were run again. Table 1 combines sightings from both sites. Scientific and common names are shown together with the Bradley and Fletcher reference; counts appear in column 4. No less than 10012 moths of 379 species were identified in 2022.

There were 9 new species this year. These were:

*Bohemannia quadrimaculella*, a small but distinctive micro moth only previously recorded four times in Avon.

*Caloptilia cuculipennella* trapped twice, but thinly scattered across Avon.

Beet Moth, a rare migrant but there was a huge influx in early September.

Campion

Chamomile Shark.

Striped Hawk-moth, a scarce migrant but quite a few arrived in the country at this time.

*Endothenia nigricostana*, a small micro, only the second Avon record.

*Pammene albuginana* is a rare micro moth that was confirmed by dissection.

*Yponomeuta irrorella*, an ermine moth – the first record for Avon.

*Gypsonoma aceriana*, only previously caught twice in Avon.

The rise of **Box-tree moths** continues – 242 were caught this year compared to 80 in 2021. Twenty-five were of the distinctive dark form.

One hundred and twenty-nine **Jersey Tigers** were caught compared to 33 in 2021 so they are clearly on the increase. People with little knowledge of moths are noticing them in the daytime.

Twenty **European Corn-borers** were caught this year. Only three in total in previous years.

**TABLE 1 – HANDEL ROAD and BALMORAL ROAD**

Acorn Piercer	Pammene fasciana	1236	1
Alder Moth	Acronicta alni	2281	1
Angle Shades	Phlogophora meticulosa	2306	13
Apple Ermine	Yponomeuta malinellus	0426	65
Apple Leaf Miner	Lyonetia clerkella	0263	43
Ash Bud Moth	Prays fraxinella	0449	1
August Thorn	Ennomos quercinaria	1912	5
Barred Fruit-tree Tortrix	Pandemis cerasana	0970	1
Barred Sallow	Tiliacea aurago	2272	2
Barred Straw	Gandaritis pyraliata	1758	2
Beaded Chestnut	Agrochola lychnidis	2267	25
Beautiful Golden Y	Autographa pulchrina	2442	1
Beautiful Hook-tip	Laspeyria flexula	2473	3
Beautiful Plume	Amblyptilia acanthadactyla	1497	14
Bee Moth	Aphomia sociella	1428	27
Beet Moth	Scrobipalpa ocellatella	0814	1
Bird-cherry Ermine	Yponomeuta evonymella	0424	187
Black Rustic	Aporophyla nigra	2232	17
Blackneck	Lygephila pastinum	2466	1
Blair's Shoulder-knot	Lithophane leautieri subsp. hesperica	2240	16
Blood-vein	Timandra comae	1682	4
Blue-bordered Carpet	Plemyria rubiginata subsp. plumbata	1766	3
Bordered Carl	Coptotriche marginea	0125	2
Bordered Marble	Endothenia marginana	1099	1
Bordered Straw	Heliothis peltigera	2403	2
Box-tree Moth	Cydalima perspectalis	1409a	242
Bright-line Brown-eye	Lacanobia oleracea	2160	78
Brimstone Moth	Opisthograptis luteolata	1906	186
Brindled Beauty	Lycia hirtaria	1927	31
Brindled Pug	Eupithecia abbreviata	1852	6
Broad-barred White	Hecatera bicolorata	2164	1
Broad-bordered Yellow Underwing	Noctua fimbriata	2110	7
Brown House Moth	Hofmannophila pseudospretella	0647	51
Brown-spot Pinion	Agrochola litura	2266	1
Brussels Lace	Cleorodes lichenaria	1945	1
Bud Moth	Spilonota ocellana	1205	4
Buff Arches	Habrosyne pyritoides	1653	10
Buff Ermine	Spilosoma lutea	2061	73
Buff Footman	Eilema depressa	2049	2
Buff-tip	Phalera bucephala	1994	9
Burnished Brass	Diachrysia chrysitis	2434	20
Buttoned Snout	Hypena rostralis	2480	1
Cabbage Moth	Mamestra brassicae	2154	8
Campion	Sideridis rivularis	2166	1
Canary-shouldered Thorn	Ennomos alniaria	1913	1
Centre-barred Sallow	Atethmia centrago	2269	8
Chamomile Shark	Cucullia chamomillae	2214	1
Chequered Fruit-tree Tortrix	Pandemis corylana	0969	7
Cherry Bark Moth	Enarmonia formosana	1216	5
Cherry Fruit Moth	Argyresthia pruniella	0420	1
Chinese Character	Cilix glaucata	1651	7
Cinnabar	Tyria jacobaeae	2069	113
Clay	Mythimna ferrago	2193	15

Clay Triple-lines	Cyclophora linearia	1681	1
Clifden Nonpareil	Catocala fraxini	2451	2
Cloaked Minor	Mesoligia furuncula	2341	39
Clouded Border	Lomaspilis marginata	1887	10
Clouded Brindle	Apamea epomidion	2327	4
Clouded Drab	Orthosia incerta	2188	15
Clouded Silver	Lomographa temerata	1958	6
Codling Moth	Cydia pomonella	1261	46
Common Carpet	Epirrhoe alternata	1738	12
Common Cloaked Shoot	Gypsonoma dealbana	1169	1
Common Emerald	Hemithea aestivaria	1669	13
Common Footman	Eilema lurideola	2050	108
Common Grass-veneer	Agriphila tristella	1305	70
Common Grey	Scoparia ambigualis	1334	2
Common Lutestring	Ochropacha duplaris	1657	3
Common Marble	Celypha lacunana	1076	25
Common Marbled Carpet	Dysstroma truncata	1764	81
Common Plume	Emmelina monodactyla	1524	42
Common Pug	Eupithecia vulgata	1834	37
Common Quaker	Orthosia cerasi	2187	54
Common Roller	Ancylis badiana	1126	1
Common Rustic	Mesapamea secalis	2343	192
Common Swift	Korscheltellus lupulina	0017	6
Common Wainscot	Mythimna pallens	2199	26
Common White Wave	Cabera pusaria	1955	2
Common Yellow Conch	Agapeta hamana	0937	10
Copper Underwing	Amphipyra pyramidea	2297	12
Coronet	Craniophora ligustri	2291	9
Crescent Plume	Marasmarcha lunaedactyla	1495	2
Currant Pug	Eupithecia assimilata	1832	1
Cypress Carpet	Thera cupressata	1771a	5
Cypress Pug	Eupithecia phoeniceata	1855	27
Dark Arches	Apamea monoglypha	2321	101
Dark Ash Bud Moth	Prays ruficeps	0448a	1
Dark Chestnut	Conistra ligula	2259	1
Dark Dagger or Grey Dagger (undetermined)	Acronicta psi/tridens	2283 - 2284	15
Dark Fruit-tree Tortrix	Pandemis heparana	0972	4
Dark Sword-grass	Agrotis ipsilon	2091	1
Dark Umber	Philereme transversata	1792	1
December Moth	Poecilocampa populi	1631	18
Diamond-back Moth	Plutella xylostella	0464	15
Dingy Footman	Eilema griseola	2044	20
Dingy Shell	Euchoeca nebulata	1874	2
Dot Moth	Melanchra persicariae	2155	1
Dotted Border	Agriopis marginaria	1934	1
Double Square-spot	Xestia triangulum	2128	3
Double-striped Pug	Gymnoscelis rufifasciata	1862	100
Double-striped Tabby	Hypsopygia glaucinalis	1415	3
Drinker	Euthrix potatoria	1640	4
Dun-bar	Cosmia trapezina	2318	2
Dusky Sallow	Eremobia ochroleuca	2352	6
Dusky Thorn	Ennomos fuscantaria	1914	21
Early Grey	Xylocampa areola	2243	25
Early Thorn	Selenia dentaria	1917	10
Elephant Hawk-moth	Deilephila elpenor	1991	78



European Corn Borer	<i>Ostrinia nubilalis</i>	1375	20
Eyed Hawk-moth	<i>Smerinthus ocellata</i>	1980	7
Fan-foot	<i>Herminia tarsipennalis</i>	2489	15
Feathered Thorn	<i>Colotois pennaria</i>	1923	1
Flame	<i>Axylia putris</i>	2098	23
Flame Carpet	<i>Xanthorhoe designata</i>	1722	1
Flame Shoulder	<i>Ochroleuca plecta</i>	2102	123
Flounced Rustic	<i>Luperina testacea</i>	2353	42
Four-spotted Footman	<i>Lithosia quadra</i>	2051	1
Freyer's Pug	<i>Eupithecia intricata</i>	1827	3
Furness Dowd	<i>Blastobasis adustella</i>	0873	19
Garden Carpet	<i>Xanthorhoe fluctuata</i>	1728	58
Garden Grass-veneer	<i>Chrysoteuchia culmella</i>	1293	294
Garden Pebble	<i>Evergestis forficalis</i>	1356	38
Garden Rose Tortrix	<i>Acleris variegana</i>	1048	2
Garden Tiger	<i>Arctia caja</i>	2057	6
Gold Spot	<i>Plusia festucae</i>	2439	1
Gold Triangle	<i>Hypsopygia costalis</i>	1413	27
Gothic	<i>Naenia typica</i>	2136	1
Green Carpet	<i>Colostygia pectinataria</i>	1776	6
Green Oak Tortrix	<i>Tortrix viridana</i>	1033	6
Green Pug	<i>Pasiphila rectangulata</i>	1860	9
Green Silver-lines	<i>Pseudoips prasinana</i>	2422	1
Green-brindled Crescent	<i>Allophyes oxyacanthae</i>	2245	2
Grey Knot-horn	<i>Acrobasis advenella</i>	1439	4
Grey Pug	<i>Eupithecia subfuscata</i>	1837	1
Grey Shoulder-knot	<i>Lithophane ornitopus</i>	2237	1
Haworth's Pug	<i>Eupithecia haworthiata</i>	1813	12
Hawthorn Moth	<i>Scythropia crataegella</i>	0450	3
Heart and Club	<i>Agrotis clavis</i>	2088	59
Heart and Dart	<i>Agrotis exclamationis</i>	2089	530
Hebrew Character	<i>Orthosia gothica</i>	2190	75
Herald	<i>Scoliopteryx libatrix</i>	2469	3
Hoary Belle	<i>Eucosma cana</i>	1201	1
Hook-streak Grass-veneer	<i>Crambus lathoniellus</i>	1301	2
Horse Chestnut Leaf-miner	<i>Cameraria ohridella</i>	366a	4
Humming-bird Hawk-moth	<i>Macroglossum stellatarum</i>	1984	2
Ingrailed Clay	<i>Diarsia mendica</i>	2120	3
Iron Prominent	<i>Notodonta dromedarius</i>	2000	2
Jersey Tiger	<i>Euplagia quadripunctaria</i>	2067	129
July Highflyer	<i>Hydriomena furcata</i>	1777	2
Juniper Webber	<i>Dichomeris marginella</i>	0862	5
Kent Black Arches	<i>Meganola albula</i>	2076	2
Knot Grass (moth)	<i>Acronicta rumicis</i>	2289	12
Lackey	<i>Malacosoma neustria</i>	1634	3
L-album Wainscot	<i>Mythimna l-album</i>	2202	7
Large Fruit-tree Tortrix	<i>Archips podana</i>	0977	3
Large Ranunculus	<i>Polymixis flavicincta</i>	2252	3
Large Wainscot	<i>Rhizedra lutosa</i>	2375	5
Large Yellow Underwing	<i>Noctua pronuba</i>	2107	501
Least Black Arches	<i>Nola confusalis</i>	2078	3
Least Yellow Underwing	<i>Noctua interjecta</i>	2112	1
Lesser Broad-bordered Yellow Underwing	<i>Noctua janthe</i>	2111	344
Lesser Swallow Prominent	<i>Pheosia gnoma</i>	2006	1
Lesser Yellow Underwing	<i>Noctua comes</i>	2109	181
Light Arches	<i>Apamea lithoxyloa</i>	2322	5

Light Brown Apple Moth	Epiphyas postvittana	0998	287
Light Emerald	Campaea margaritaria	1961	30
Lime Hawk-moth	Mimas tiliae	1979	7
Lime-speck Pug	Eupithecia centaureata	1825	9
Long-horned Flat-body	Carcina quercana	0658	17
Lunar Underwing	Omphaloscelis lunosa	2270	244
Lychnis (moth)	Hadena bicruris	2173	14
Magpie Moth	Abraxas grossulariata	1884	1
Maiden's Blush	Cyclophora punctaria	1680	4
Maple Button	Acleris forsskaleana	1036	3
Maple Pug	Eupithecia inturbata	1812	1
Marbled Beauty	Bryophila domestica	2293	1
Marbled Green	Nyctobrya muralis	2295	4
Marbled Minor	Oligia strigilis	2337	45
Marbled Orchard Tortrix	Hedya nubiferana	1083	6
Marbled White Spot	Deltote pygarga	2410	1
March Tubic	Diurnea fagella	0663	3
Meal Moth	Pylalis farinalis	1417	11
Middle-barred Minor	Oligia fasciuncula	2340	5
Miller (moth)	Acronicta leporina	2280	1
Mocha	Cyclophora annularia	1676	1
Mother of Pearl	Pleuroptya ruralis	1405	51
Mottled Beauty	Alcis repandata	1941	3
Mottled Pug	Eupithecia exiguata	1819	3
Mottled Rustic	Caradrina morpheus	2387	18
Mullein Moth	Cucullia verbasci	2221	1
Muslin Moth	Diaphora mendica	2063	49
Nut-tree Tussock	Colocasia coryli	2425	8
Oak Beauty	Biston strataria	1930	4
Oak Eggar	Lasiocampa quercus	1637	1
Oak Hook-tip	Watsonalla binaria	1646	1
Old Lady	Mormo maura	2300	1
Olive Pearl	Udea olivalis	1392	7
Orange Footman	Eilema sororcula	2043	5
Orange Swift	Triodia sylvina	0015	14
Orchard Ermine	Yponomeuta padella	0425	5
Pale Mottled Willow	Caradrina clavipalpis	2389	42
Pale Pinion	Lithophane socia	2236	3
Pale Prominent	Pterostoma palpina	2011	2
Pale Tussock	Calliteara pudibunda	2028	11
Parsnip Moth	Depressaria radiella	0672	1
Peach Blossom	Thyatira batis	1652	2
Pebble Hook-tip	Drepana falcataria	1648	5
Peppered Moth	Biston betularia	1931	10
Phoenix	Eulithis prunata	1754	1
Pine Shoot Moth	Rhyacionia buoliana	1210	1
Pink-barred Sallow	Xanthia togata	2273	2
Plain Golden Y	Autographa jota	2443	2
Plum Fruit Moth	Grapholita funebrana	1247	3
Plum Tortrix	Hedya pruniana	1082	4
Poplar Grey	Subacronicta megacephala	2278	4
Poplar Hawk-moth	Laothoe populi	1981	11
Privet Hawk-moth	Sphinx ligustri	1976	46
Privet Twist	Clepsis consimilana	0994	16
Purple Bar	Cosmorhoe ocellata	1752	2
Purple Thorn	Selenia tetralunaria	1919	1

Red Piercer	Lathronympha strigana	1219	1
Red Twin-spot Carpet	Xanthorhoe spadicearia	1724	10
Red-barred Tortrix	Ditula angustiorana	1010	16
Red-green Carpet	Chloroclysta siterata	1760	3
Red-line Quaker	Agrochola lota	2263	7
Riband Wave	Idaea aversata	1713	169
Rosy Footman	Mitochrista miniata	2037	3
Rosy Minor	Litoligia literosa	2342	5
Rosy Rustic	Hydraecia micacea	2361	2
Ruby Tiger	Phragmatobia fuliginosa	2064	10
Ruddy Carpet	Catarhoe rubidata	1735	1
Ruddy Streak	Tachystola acroxantha	0656	200
Rufous Minor	Oligia versicolor	2338	5
Rush Veneer	Nomophila noctuella	1398	41
Rustic	Hoplodrina blanda	2382	163
Rustic Shoulder-knot	Apamea sordens	2334	13
Rusty Dot	Udea ferrugalis	1395	19
Sallow (moth)	Cirrhia icteritia	2274	2
Satellite	Eupsilia transversa	2256	1
Scalloped Hazel	Odontopera bidentata	1920	1
Scalloped Oak	Crocallis elinguaris	1921	11
Scarce Bordered Straw	Helicoverpa armigera	2400	2
Scarce Footman	Eilema complana	2047	5
Scarlet Tiger	Callimorpha dominula	2068	7
Scorched Carpet	Ligdia adustata	1888	10
Scorched Wing	Plagodis dolabraria	1904	3
September Thorn	Ennomos erosaria	1915	4
Setaceous Hebrew Character	Xestia c-nigrum	2126	293
Short-cloaked Moth	Nola cucullatella	2077	3
Shoulder-striped Wainscot	Leucania comma	2205	3
Shuttle-shaped Dart	Agrotis puta	2092	199
Silver Y	Autographa gamma	2441	54
Silver-ground Carpet	Xanthorhoe montanata	1727	2
Single-dotted Wave	Idaea dimidiata	1708	9
Six-striped Rustic	Xestia sexstrigata	2133	5
Small Angle Shades	Euplexia lucipara	2305	1
Small Blood-vein	Scopula imitaria	1690	44
Small China-mark	Cataclysta lemnata	1354	1
Small Dusty Wave	Idaea seriata	1707	10
Small Elephant Hawk-moth	Deilephila porcellus	1992	5
Small Emerald	Hemistola chrysoprasaria	1673	5
Small Fan-footed Wave	Idaea biselata	1702	22
Small Grey	Eudonia mercurella	1344	3
Small Magpie	Anania hortulata	1376	65
Small Phoenix	Ecliptopera silaceata	1759	1
Small Quaker	Orthosia cruda	2182	2
Small Ranunculus	Hecatera dysodea	2165	6
Small Rivulet	Perizoma alchemillata	1803	4
Small Square-spot	Diarsia rubi	2123	37
Small Waved Umber	Horisme vitalbata	1781	2
Smoky Wainscot	Mythimna impura	2198	12
Smoky-barred Marble	Lobesia abscisana	1108	4
Snout	Hypena proboscidalis	2477	64
Spectacle	Abrostola tripartita	2450	34
Spotted Shoot Moth	Rhyacionia pinivorana	1212	1
Spruce Carpet	Thera britannica	1769	3

Square-spot Rustic	Xestia xanthographa	2134	227
Straw Dot	Rivula sericealis	2474	95
Straw Grass-veneer	Agriphila straminella	1304	55
Straw Underwing	Thalpophila matura	2303	82
Streamer	Anticlea derivata	1747	2
Striped Hawk-moth	Hyles livornica	1990	1
Swallow Prominent	Pheosia tremula	2007	1
Swallow-tailed Moth	Ourapteryx sambucaria	1922	15
Tawny Marbled Minor	Oligia latruncula	2339	39
Tawny Speckled Pug	Eupithecia icterata	1838	1
Timothy Tortrix	Aphelia paleana	0989	1
Treble Brown Spot	Idaea trigeminata	1711	3
Treble Lines	Charanyca trigrammica	2380	108
Turnip Moth	Agrotis segetum	2087	10
Twenty-plume Moth	Alucita hexadactyla	1288	13
Twin-spotted Quaker	Anorthoa munda	2189	5
Uncertain	Hoplodrina octogenaria	2381	262
Vapourer	Orgyia antiqua	2026	2
Vestal	Rhodometra sacraria	1716	4
Vine's Rustic	Hoplodrina ambigua	2384	331
V-Pug	Chloroclystis v-ata	1858	6
Water Veneer	Acentria ephemerella	1331	140
Waved Umber	Menophra abruptaria	1936	3
Wax Moth	Galleria mellonella	1425	5
White Ermine	Spilosoma lubricipeda	2060	7
White-headed Ermel	Paraswammerdamia albicapitella	0440	1
White-shouldered House Moth	Endrosis sarcitrella	0648	6
White-spotted Pug	Eupithecia tripunctaria	1835	2
Willow Beauty	Peribatodes rhomboidaria	1937	234
Wormwood Pug	Eupithecia absinthiata	1830	4
Yellow Shell	Campogramma bilineata	1742	16
Yellow-barred Brindle	Acasis viretata	1883	2
Yellow-line Quaker	Agrochola macilentata	2264	1
Yellow-tail	Euproctis similis	2030	4
a caloptilia	Caloptilia	0280 - 0295	1
a Cnephasia species	Cnephasia	1018- 1024	13
a Dichrorampha	Dichrorampha	1273 - 1287	1
a Gelechid	Gelechiidae	800 - 802	1
a micro-moth	Bohemannia quadrimaculella	0019	1
a micro-moth	Borkhausenia fuscescens	0644	3
a micro-moth	Bryotropha affinis	0779	1
a micro-moth	Bryotropha domestica	0789	7
a micro-moth	Caloptilia cuculipennella	0280	2
a micro-moth	Caloptilia semifascia	0290	3
a micro-moth	Caloptilia stigmatella	0288	2
a micro-moth	Cochylis atricapitana	0966	5
a micro-moth	Cochylis roseana	0962	1
a micro-moth	Crassa unitella	0642	2
a micro-moth	Helcystogramma rufescens	0868	3
a micro-moth	Metalampra italica	642a	2
a micro-moth	Mompha epilobiella	0893	4
a micro-moth	Mompha propinquella	0888	2
a micro-moth	Monopis	0227- 0230	6

a micro-moth	Monopis weaverella	0228	1
a micro-moth	Parornix	301 - 309	1
a micro-moth	Phtheochroa rugosana	0925	1
a micro-moth	Swammerdamia pyrella	0438	5
a micro-moth	Teleiodes vulgella	0765	6
a micro-moth	Tinea trinitella	0247	3
a micro-moth	Triaxomera parasitella	0224	1
a micro-moth	Yponomeuta plumbella	0430	2
a micro-moth	Ypsolopha mucronella	0451	2
A Nematopogon species	Nematopogon	0140-0143	1
a november or autumnal moth (unidentified)	Epirrita	1795 - 1797	1
a Oligia minor moth (unidentified)	Oligia	2338?	1
a Phyllonorycter	Phyllonorycter	315 - 365	2
a pyralid moth	Agriphila geniculea	1309	44
a pyralid moth	Anania coronata	1378	36
a pyralid moth	Catoptria pinella	1313	1
a pyralid moth	Endotricha flammealis	1424	16
a pyralid moth	Ephestia woodiella	1474	14
a pyralid moth	Eudonia angustea	1342	14
a pyralid moth	Eudonia lacustrata	1338	21
a pyralid moth	Euzophera pinguis	1470	7
a pyralid moth	Homoeosoma sinuella	1481	3
a pyralid moth	Nephoterix angustella	1465	9
a pyralid moth	Palpita vitrealis	1408	1
a pyralid moth	Pyrausta aurata	1361	27
a pyralid moth	Pyrausta purpuralis	1362	4
a pyralid moth	Udea prunalis	1390	22
a tortrix moth	Acleris schalleriana	1047	1
a tortrix moth	Acleris sparsana	1041	1
a tortrix moth	Acleris umbrana	1052	1
a tortrix moth	Ancylis achatana	1115	10
a tortrix moth	Celypha striana	1063	66
a tortrix moth	Cochylis molliculana	0964a	4
a tortrix moth	Dichrorampha acuminatana	1279	3
a tortrix moth	Dichrorampha alpinana	1274	1
a tortrix moth	Endothenia gentianaeana	1097	1
a tortrix moth	Endothenia nigricostana	1102	1
a tortrix moth	Epiblema foenella	1183	1
a tortrix moth	Epiblema scutulana	1184	1
a tortrix moth	Epinotia bilunana	1133	1
a tortrix moth	Gypsonoma aceriana	1167	1
a tortrix moth	Gypsonoma sociana	1168	2
a tortrix moth	Lobesia littoralis	1109	1
a tortrix moth	Lozotaenia forsterana	1002	4
a tortrix moth	Notocelia cynosbatella	1174	10
a tortrix moth	Notocelia rosaecolana	1177	4
a tortrix moth	Notocelia trimaculana	1176	1
a tortrix moth	Pammene albuginana	1229	1
a tortrix moth	Pammene regiana	1234	3
a tortrix moth	Pseudargyrotoza conwagana	1011	6
a tortrix moth	Syndemis musculana	0986	4
An ermine	Yponomeuta irrorella	0429	1
An Oegoconia species	Oegoconia	0870-0871	4

A trap was run in Charlton Park on the night of 14/15 August. Over 300 moths of 54 species were caught, a good night!

<b>Species</b>	<b>Count</b>
Agriphila geniculea	3
Agriphila straminella	13
Agriphila tristella	4
Apple Ermine	7
Apple Leaf Miner	2
August Thorn	1
Barred Fruit-tree tortrix	1
Blastobasis adustella	6
Bright-line Brown-eye	3
Brimstone moth	4
Bryotropha domestica	2
Carcina quercana	3
Celypha lacunana	2
Clepsis consimilana	1
Cloaked Minor	2
Common Carpet	1
Common Emerald	1
Common Marbled Carpet	1
Common Plume	1
Common Rustic	11
Common Wainscot	2
Coptotriche marginea	1
Currant Pug	1
Dark Dagger or Grey Dagger (undetermined)	1
Diamond-back Moth	1
Dingy Footman	1
Double-striped Pug	13
Dusky Thorn	3
Flame Shoulder	10
Flounced Rustic	3
Garden Tiger	2
Jersey Tiger	12
Large Yellow Underwing	2
Lesser Broad-bordered Yellow Underwing	44
Light Brown Apple Moth	21
Maiden's Blush	1
Mother of Pearl	1
Nephopterix angustella	7
Pale Mottled Willow	1
Pyrausta purpuralis	1
Ringed China-mark	1
Rush Veneer	8
Setaceous Hebrew Character	21
Shuttle-shaped Dart	11
Small China-mark	1
Small Dusty Wave	4
Small Square-spot	5
Square-spot Rustic	8
Straw Dot	4
Straw Underwing	9
Tachystola acroxantha	11
Turnip Moth	1

Vine's Rustic	20
Willow Beauty	2

Elsewhere, the following species were found:

**Jersey Tiger** in the Hawthorns, Somerdale and a West View Road garden.

**Humming-bird Hawk-moth** in Caernarvon Road, Park Road and Stockwood Vale.

#### ***Manor Road Community Woodland***

Larval web of **Orchard Ermine** and a **Burnet Companion**.

#### ***Rock Road***

**Scarlet Tiger** and **Knot-grass** larva.

#### ***Stockwood Vale***

**Silver Y**, **Straw Dot**, **Large Yellow Underwing** and **Winter Moth**.

Also recorded were a **Box-tree Moth** at Tesco's, an **Old Lady** that flew over the road and landed on a Dapps Hill front door, a **Buff Ermine** in Market Walk and a **Nettle-tap** in the Mill Grounds.

## **DRAGONFLIES AND DAMSELFLIES**

Records of dragonflies are a bit thin on the ground for the second year. Not because of falling numbers but the lack of records. Information about any species in future years would be very welcome.

### **Beautiful Demoiselle**

One in the Mill Grounds on 30<sup>th</sup> April which is quite early. Next seen in Stockwood Vale on 7<sup>th</sup> May. There were seven along the Swineford stretch of the River Avon on 13<sup>th</sup> May and 31 at Chewton Keynsham on 28<sup>th</sup>. Also noted in the Memorial Park and a male in a Handel Road garden on 11<sup>th</sup> September which is our latest record.

### **Banded Demoiselle**

Eighty along the Swineford stretch of the River Avon on 13<sup>th</sup> May, ten at Chewton Keynsham and seven in the Mill Grounds on 28<sup>th</sup> May. Also noted in the Memorial Park and along the Hanham stretch of the River Avon.

### **White-legged Damselfly**

As usual, it was the Swineford stretch of the River Avon that best suited them. Ninety-six were counted on 16<sup>th</sup> June. Twelve at Somerdale on 13<sup>th</sup> June was a nice count. Only a single one at Chewton Keynsham.

### **Large Red Damselfly**

First seen on 30<sup>th</sup> April when five were found in the Mill Grounds. Seventeen along the Swineford stretch of the River Avon on 13<sup>th</sup> May was the largest number. Also found at Century Ponds, on the stony lane that runs down to Chewton Place, Chewton Keynsham, Manor Road Community Woodland, Stockwood Vale and Handel Road up to 19<sup>th</sup> July.

### **Azure Damselfly**

Very few seen, and all in June. There were four around the pond in Manor Road Community Woodland although the pond is in a very poor state. Seventeen were seen along the Swineford stretch of the River Avon, and others at Somerdale and Stockwood Vale.

### **Blue-tailed Damselfly**

The first two were at Century Ponds on 7<sup>th</sup> May, then 13 at Somerdale on 13<sup>th</sup> June. Also noted along the Swineford stretch of the River Avon.

**Red-eyed Damselfly**

Just a single record of 17 along the Swineford stretch of the River Avon on 16<sup>th</sup> June.

**Migrant Hawker**

Two at Somerdale on 18<sup>th</sup> October.

**Southern Hawker**

One hatched from a Charlton Park pond on 11<sup>th</sup> July. Two or more in the Mill Grounds on 8<sup>th</sup> October. The other reports were from a Handel Road garden where one buzzed around a pond on several days up to 13<sup>th</sup> October.

**Brown Hawker**

One along the Hanham stretch of the River Avon on 14<sup>th</sup> August.

**Emperor Dragonfly**

One along the Swineford stretch of the River Avon on 16<sup>th</sup> June and four along the Hanham stretch on 14<sup>th</sup> August.

**Scarce Chaser**

Eighteen along the Swineford stretch of the River Avon on 16<sup>th</sup> June.

**Broad-bodied Chaser**

One in Manor Road Community Woodland on 12<sup>th</sup> June and another along the Swineford stretch of the River Avon four days later.

**Back-tailed Skimmer**

Two along the Swineford stretch of the River Avon on 16<sup>th</sup> June.

**Common Darter**

One in Manor Road Community Woodland on 11<sup>th</sup> September, one in the Memorial Park on 7<sup>th</sup> October and another in the Mill Grounds on 8<sup>th</sup> October.

**OTHER INSECTS*****Ladybirds***

Two mating pairs and three single **2-spot Ladybirds** along the Swineford stretch of the River Avon 13<sup>th</sup> May. Also in the Memorial Park and Handel Road.

Eleven **7-spot Ladybirds** at Somerdale on 13<sup>th</sup> June and also in Manor Road Community Woodland and along the Swineford stretch of the River Avon.

A **10-spot Ladybird** in Handel Road on 16<sup>th</sup> April.

**22-spot Ladybirds** in Manor Road Community Woodland on 16<sup>th</sup> April and 8<sup>th</sup> May.

Many Harlequins between 25<sup>th</sup> April and 13<sup>th</sup> September, sometimes caught in a moth trap.

***Shieldbugs***

**Birch Shieldbugs** in gardens in Handel Road between 8<sup>th</sup> May and 13<sup>th</sup> September, sometimes in a moth trap.

**Dock Bugs** surprisingly only recorded once. Three were found along the Swineford stretch of the River Avon on 13<sup>th</sup> May.

**Forest Bugs** in a Handel Road moth trap on five occasions and one in Charlton Park on 15<sup>th</sup> August, also in a moth trap.

**Green Shieldbugs** in Handel Road on four occasions between 14<sup>th</sup> April and 16<sup>th</sup> October.

***Beetles***

**Alder Leaf Beetles** in West View Road between 3<sup>rd</sup> May and 28<sup>th</sup> September. Also along the Swineford stretch of the River Avon and the Mill Grounds.



A **Black-headed Cardinal** along the Swineford stretch of the River Avon on 13<sup>th</sup> May.  
**Cantharis rustica** in the Mill Grounds on 28<sup>th</sup> May.  
**Cockchafers** in a moth trap in Handel Road on four occasions. Also at Tesco's (!) and in Stockwood Vale. All in May.  
**Common Burying Beetle** in a Handel Road moth trap on 24<sup>th</sup> June.  
A **Flea Beetle** in West View Road on 13<sup>th</sup> May.  
**Green Nettle Weevils** in the Memorial Park and along the Swineford stretch of the River Avon.  
**Lavender Beetles** in Rock Road on 21<sup>st</sup> June.  
A **Lesser Stage Beetle** drowned in a West View Road water butt on 29<sup>th</sup> July.  
**Red-headed Cardinal Beetles** in Manor Road Community Woodland, the Memorial Park and Chewton Keynsham.

### *Flies*

Although **Caddisflies** are often seen, they rarely get into this report as they are very difficult to identify. However, it is worth noting that the bottom of a moth trap in Handel Road was covered with them on 17<sup>th</sup> June; perhaps most of them emerged from a nearby pond.  
**Dark-edged Bee-flies** were noted in the Memorial Park, Manor Road Community Woodland, West View Road and Handel Road.  
**Ephemera vulgata** along the Swineford stretch of the River Avon as usual.  
Scorpionflies in the Memorial Park, Somerdale, by the River Avon and between Bristol Road and the rugby ground.  
**Alderflies** in the Memorial Park, Manor Road Community Woodland and Chewton Keynsham.

### *Grasshoppers and Crickets*

**Dark Bush-crickets** at Somerdale on 13<sup>th</sup> June.  
**Oak Bush-crickets** nymph in Handel Road on 10<sup>th</sup> August.

### *Bees and wasps*

A parasitic wasp, **Amblyteles armatorius**, appeared in the Memorial Park on 15<sup>th</sup> May.  
Two **Ashy Mining Bees**, **Buff-tailed Bumble Bees** and **Honey Bees** in a West View Road garden.  
A colony of **Ivy Bees** on a bank in the Mill Grounds as before.  
Two **Common Wasps** in Handel Road on the rather late date of 11<sup>th</sup> November. A nest of this species was found in a hole in the ground in Manor Road Community Woodland.  
A huge swarm of **Honey Bees** made its way through Handel Road at 1 p.m. on 13<sup>th</sup> May.  
**Large Red Bumblebees** were noted in West View Road and Handel Road between 17<sup>th</sup> April and 11<sup>th</sup> November.  
A **Hornet** in Meadow Wood on 19<sup>th</sup> September.

### *Hoverflies*

**Hornet Hoverflies** in Handel Road and West View Road.  
**Eupeodes latifasciatus** by the River Avon on 14<sup>th</sup> August.  
**Eupeodes luniger** at Somerdale on 23<sup>rd</sup> July.

### *Others*

**Crab Spider** on a metal gate in Handel Road.  
**Pholcus phalangoides** in Charlton Park. Commonly known as the **Daddy longlegs spider-eating spider** or **Long-bodied Cellar Spider**. It was obviously doing what it is supposed to do. Its victim may have been **Segestria Florentina**.

## WATER QUALITY

### *Wellsway School pond dipping*

This event was put on for younger children on 24<sup>th</sup> September. Fifteen species were taken. These were **Chironomid midge larva (bloodworm)**, **Flatworm**, **Freshwater Shrimp**, **Greater Diving Beetle**, **Greater Water Boatman**, **Lesser Diving Beetle**, **Lesser Water Boatman**, **Mayfly nymph (Baetis sp)**, **Mosquito larva / pupa**, **Non-red midge larva**, **Phantom Midge larva**, **Pondskater**, **Tubifex worm (Sludgeworm)**, **Water Louse** and **Water Spider**.

**River dipping** took place again in the River Chew at Dapps Hill on the last Sunday of September on a clear, fine, mild autumn afternoon. In common with last year, there was an age limit of seven years, any younger enthusiasts directed to pond dipping at Wellsway school the previous afternoon. Twenty people took part, including 11 children, and ten kick samples were taken. The river level was low, although the flow rate was quite good over the small dam of stones which is now well-established, reflecting quite low rainfall in September (indeed over the most of the summer months). Fourteen major invertebrate indicator groups were represented. In common with recent years, most samples had relatively low numbers, although fish were caught in several samples, including **Minnow** and **Bullhead**. A nearby fisherman caught two good sized **Chub**.

Overall, the main indicator groups and species were all present and sufficient to suggest that the quality of water remains good. Certainly, there is still no obvious sign of poor water quality (e.g. increased sediment, sludge, or a bad smell).

**Stonefly** nymph, burrowing and swimming **mayfly** nymphs were present in most samples, comparable with last year's good results. Some samples contained good numbers of cased and uncased **caddis fly** larvae (including *Hydropsyche* species), more evidence of well-oxygenated water. There was an unusually high diversity of molluscs, which was very good to see, including **Bladder snails**, **Pea shell cockles**, **Jenkins' spire shells** and **River Limpets**. **Bloodworms**, **sludgeworms**, **leeches** and other polluted water indicators were present in low numbers, reflecting a continuing healthy river ecosystem here.

The following table shows the '% frequency' of each species group, i.e. based on the number of trays in which one or more species was found. The first column shows 1998 when the first dipping was organised and the others show the last six years.

Species group	1998	2016	2017	2018	2020	2021	2022
Stonefly nymph	27	73	67	86	70	82	60
Mayfly nymph (swimming)	40	7	7	7	10	64	30
Mayfly nymph (burrowing)	27	53	33	71	10	82	80
Cased Caddis larva	13	66	33	36	30	18	20
Uncased Caddis larva	47	33	60	14	50	36	30
Freshwater Shrimp	67	7	7	0	0	0	0
Waterlouse	7	7	7	7	30	0	0
Leech	53	0	33	21	20	9	10
Midge larvae (red - Bloodworm)	73	33	60	57	50	54	40
Midge larvae (non-red)	7	40	53	29	10	27	30
Sludgeworm (annelid worm)	73	53	67	79	30	18	60
Molluscs	53	40	7	21	20	45	80
Arachnids	73	53	73	64	60	64	70
Beetles	13	0	7	7	0	9	10
Other insects (e.g. fly larvae)	40	33	13	14	10	27	20
Flatworms	0	0	0	0	0	0	0
Fish	0	40	13	43	20	55	70

## **AMPHIBIANS, REPTILES, MOLLUSCS and other species**

First sightings of **Frogs** were in West View Road on 8<sup>th</sup> February when there were many adults and three clumps of frogspawn. This increased to 19 clumps by 11<sup>th</sup>. Handel Road's first Frog was on 13<sup>th</sup> February and frogspawn on 14<sup>th</sup>. The number of clumps in West View Road reached 50 on 21<sup>st</sup> February, and Handel Road 30 on 25<sup>th</sup>. There were many clumps in Manor Road Community Woodland by 20<sup>th</sup> and Balmoral Road had its first on 23<sup>rd</sup>. In a Charlton Park garden between eight and 10 adults were found beneath a pottery bird bath in April. There were tadpoles in Century Ponds on 7<sup>th</sup> May.

Just one report of **Toads**. Despite the overgrown nature of the pond in Manor Road Community Woodland, several small ones were found on 28<sup>th</sup> August.

For the first time, a **Newt** appeared in a Handel Road pond on 24<sup>th</sup> June, and **Smooth Newt** efts were found in the Wellsway School pond on 24<sup>th</sup> September. West View Road fared much better where many **Palmate Newts** were present throughout the year.

**Slow-worms** were found in Balmoral Road, Stockwood Vale and Charlton Park.

**Leeches** and **Wandering Snails** were noted in the Wellsway School pond.

Very few reports of fish reach this report but a **Barbel** was caught in the River Chew at Steel Mills in June.

## **CONCLUSION**

I hope that this report has proved to be interesting. Although many species are the same as in previous years, new ones continue to be found. The report has been compiled from over 7,600 individual items of data, which is significant for a fairly small area. Much of the data is passed on to Bristol Regional Environmental Records Centre (BRERC) by the finders, and I know that they appreciate this; they are interested in all aspects of wildlife, not just the rarer species, so please send them the data as well as to me. It is very easy to do this via their website [www.brerc.org.uk](http://www.brerc.org.uk).

Thank you very much to everyone who has contributed to this report again. Particular thanks go to Kathryn and Jenny Aldridge, Alan Bone, Janet Cann, Ric Davison, Will Duckworth, Kathy and Martin Farrell, Jan Glossop, Andrew Harrison, Alan Hewett, Tony Kirby, Nick Page, Elspeth Rolls, Ricardo Saldanho, Dave Sage, Julia Shahin, Liz and Keith Strover, Andy Wait, Avon Wildlife Trust Keynsham group, Bristol Ornithological Club, Friends of Manor Road Community Woodland, Keynsham Community facebook page and others who have spoken to me informally and whose emails and notes have assisted me greatly.

John Aldridge

1A Handel Road, Keynsham, Bristol BS31 1BT

Email [johnaldridge40@gmail.com](mailto:johnaldridge40@gmail.com)

References:

Ian Green, Rupert Higgins, Clare and Mark Kitchen, 2000, *The Flora of the Bristol Region*

Ray Barnett, Rupert Higgins, Tony Moulin, Chris Wiltshire et al, 2003, *Butterflies of the Bristol Region*

Ray Barnett, Richard Andrews, Mike Bailey, Tim Corner, Rupert Higgins and John Martin, 2008, *Moths of the Bristol Region*

Ray Barnett, Richard Andrews, Tim Corner, Rupert Higgins, John Martin and Abigail Pedlow, 2012, *Dragonflies and Damselflies of the Bristol Region*

Paul Waring, Martin Townsend and Richard Lewington, 2003, *Field Guide to the Moths of Great Britain and Ireland*

Phil Sterling, Mark Parsons and Richard Lewington, 2012, *Field Guide to the Micro Moths of Great Britain and Ireland*

*UK Moths website*

*Avon Entomology Whatsapp group*



*Jay*  
*Cycle path, 4<sup>th</sup> March 2022*

**Appendix A1      Breeding Birds Survey for one kilometre squares ST6569  
(Somerdale) and ST6568 (including the River Chew north of Dapps Hill)**

Note that the inclusion of any species does not necessarily mean that it bred or attempted to do so, but that the species was present during the breeding season.

<b>Species</b>	<b>1 kilometre square ST6569</b>		<b>1 kilometre square ST6568</b>	
	<b>26/4/22</b>	<b>13/6/22</b>	<b>19/4/22</b>	<b>7/6/22</b>
Blackbird	4	8	14	9
Blackcap	2	4	3	2
Blue Tit	8	1	4	4
Buzzard		1		1
Canada Goose	2			
Carrion Crow	11	17	10	7
Chiffchaff	1	2	2	1
Collared Dove			6	3
Common Sandpiper			1	
Dunnock	1	3	4	2
Feral Pigeon	1	3	30	21
Goldfinch	1	6	3	2
Great Spotted Woodpecker	2			
Great Tit	10		2	2
Greenfinch	1	1		
Green Woodpecker	1			
Grey Heron			2	1
Herring Gull		1	1	1
House Martin				2
House Sparrow	2		42	43
Jackdaw	22	2	26	30
Kestrel	1	1		
Lesser Black-backed Gull	2	1	16	7
Magpie	5	33	2	4
Mallard			14	23
Moorhen		2	1	1
Mute Swan		2		
Pheasant		2		
Reed Bunting	1			
Robin	7	2	18	4
Rook			2	1
Skylark	1			
Song Thrush	2	1		
Starling	4		20	26
Stock Dove	1			
Swallow				
Swift		1		4
Whitethroat	2	10		
Woodpigeon	14	19	40	20
Wren	14	15	7	11

**Appendix B1**      **First winter counts for one kilometre squares ST6669 and ST6768**  
**(both by the River Avon)**

	<b>1 kilometre square ST6669</b>			<b>1 kilometre square ST6768</b>	
<b>Species</b>	<b>23/1/22</b>	<b>23/2/22</b>		<b>23/1/22</b>	<b>23/2/22</b>
Black-headed Gull	18	6		3	1
Blackbird	6			2	
Blue Tit	6	8			1
Buzzard					1
Canada Goose	23	2		15	71
Carrion Crow	9	9		9	23
Chaffinch	2	1			1
Cormorant	1	5		3	2
Duncock	1	5			1
Feral Pigeon	1	6			
Goldfinch	9	2		23	5
Great Spotted Woodpecker	3				
Great Tit	4	3			
Greenfinch	1	1			
Green Woodpecker					2
Greylag Goose				1	1
Grey Heron				1	
Herring Gull	1	1		1	1
Jackdaw	6	5		2	2
Kingfisher		1			
Lesser Black-backed Gull	16	2			
Little Grebe				1	
Long-tailed Tit	2				
Magpie	3	4		4	6
Mallard	5	7			6
Meadow Pipit				50	18
Moorhen	1	1		18	11
Mute Swan	5	4			2
Raven				1	
Redwing	4				
Robin	8	5		1	1
Skylark		1			3
Song Thrush		2			
Stock Dove				2	
Treecreeper		2			
Woodpigeon	13	12		11	27
Wren	1	6		6	5

**Appendix B2      Second winter counts for one kilometre squares ST6669 and ST6768  
(both by the River Avon)**

	<b>1 kilometre square ST6669</b>			<b>1 kilometre square ST6768</b>	
<b>Species</b>	<b>16/11/22</b>	<b>13/12/22</b>		<b>16/11/22</b>	<b>13/12/22</b>
Black-headed Gull	53	6		7	1
Blackbird	2	2		1	2
Blue Tit	8	5			1
Bullfinch					1
Canada Goose				6	33
Carrion Crow	10	6		21	15
Chaffinch	2	1		2	
Chiffchaff	1	1			
Cormorant	1				
Duncock	1	2			1
Feral Pigeon	2	11			
Fieldfare		1			1
Goldcrest	2				
Goldfinch	54	49		1	3
Great Tit	3	5			
Green Woodpecker	1			1	1
Grey Heron		2			
Herring Gull					1
Jackdaw	3	4		22	5
Kingfisher		1			
Lesser Black-backed Gull	1	1		1	1
Little Grebe					1
Long-tailed Tit	5			5	2
Magpie	7			5	5
Mallard	9	5			
Meadow Pipit		4			
Moorhen	1	4		1	4
Mute Swan	5	3		4	
Pheasant				1	
Pied Wagtail	2			1	
Redwing	4	4		40	9
Robin	11	4		1	1
Rook	2			15	
Skylark				1	
Sparrowhawk				1	
Starling					12
Stock Dove				2	
Woodpigeon	9	3		17	14
Wren	2			1	1
Yellowhammer				1	

**Appendix B3      First and second winter counts for one kilometre square ST6568  
(central Keynsham)**

<b>Species</b>	<b>19/1/22</b>		<b>28/11/22</b>
Black-headed Gull	17		3
Blackbird	3		5
Blue Tit	7		5
Buzzard			1
Carrion Crow	4		9
Coal Tit	1		
Collared Dove	4		9
Cormorant	2		
Dunnoek	4		1
Feral Pigeon	41		59
Goldcrest			1
Goldfinch	6		2
Goosander	2		
Grey Heron	1		
Grey Wagtail	1		
Herring Gull	1		
House Sparrow	16		21
Jackdaw	28		65
Kingfisher			1
Lesser Black-backed Gull	2		2
Long-tailed Tit			3
Magpie	4		29
Mallard	52		72
Moorhen	5		2
Robin	8		13
Rook	12		
Song Thrush	1		
Starling	38		50
Woodpigeon	34		27
Wren	2		



## Appendix C1 Manor Road Community Woodland

A tick indicates that the species was present.

Species	Jan	Feb	Mar	Apr	May	Jun	Jul	Aug	Sep	Oct	Nov	Dec
Blackbird	✓	✓	✓	✓	✓	✓			✓	✓	✓	✓
Blackcap			✓	✓	✓							
Black-headed Gull		✓								✓	✓	✓
Blue Tit	✓	✓	✓	✓	✓	✓				✓	✓	✓
Bullfinch			✓			✓						
Buzzard		✓	✓	✓	✓		✓		✓	✓	✓	✓
Carrion Crow	✓	✓	✓	✓	✓	✓		✓	✓	✓	✓	✓
Chaffinch		✓	✓	✓						✓	✓	✓
Chiffchaff			✓	✓	✓	✓			✓	✓		
Coal Tit		✓								✓		
Collared Dove												✓
Dunnock				✓	✓					✓	✓	✓
Feral Pigeon			✓		✓					✓		✓
Fieldfare										✓		✓
Goldcrest		✓									✓	
Goldfinch		✓	✓			✓			✓	✓	✓	✓
Great Spotted Woodpecker	✓	✓	✓	✓				✓		✓		
Great Tit	✓	✓	✓	✓	✓			✓	✓	✓	✓	✓
Green Woodpecker		✓	✓	✓						✓		
Greenfinch		✓										
Grey Heron		✓	✓									
Grey Wagtail		✓										
Herring Gull	✓		✓	✓								
House Sparrow		✓	✓	✓	✓	✓				✓	✓	✓
Jackdaw	✓		✓		✓	✓		✓	✓	✓	✓	✓
Jay		✓	✓					✓				
Kingfisher		✓										
Lesser Black-backed Gull			✓	✓								
Lesser Whitethroat					✓							
Linnet										✓		
Little Egret		✓										
Long-tailed Tit		✓	✓						✓	✓	✓	✓
Magpie	✓	✓	✓	✓	✓	✓		✓	✓	✓	✓	✓
Mallard			✓	✓								
Meadow Pipit										✓		
Mistle Thrush				✓						✓		
Pheasant			✓									
Pied Wagtail										✓		
Raven								✓		✓		
Redwing	✓	✓	✓									✓
Red Kite			✓	✓			✓					
Robin	✓	✓	✓	✓	✓	✓		✓	✓	✓	✓	✓
Rook	✓	✓	✓	✓	✓			✓		✓	✓	✓
Song Thrush	✓	✓				✓						
Sparrowhawk			✓									
Starling		✓			✓	✓				✓	✓	✓
Stonechat										✓		
Swift					✓							
Teal		✓										
Whitethroat										✓		
Willow Warbler				✓								
Woodcock												✓
Woodpigeon		✓	✓	✓	✓	✓		✓	✓	✓	✓	✓
Wren	✓	✓	✓	✓	✓	✓			✓	✓	✓	✓
Yellowhammer												✓

## Appendix C2      Park Road garden

A tick indicates that the species was present.

Species	Jan	Feb	Mar	Apr	May	Jun	Jul	Aug	Sep	Oct	Nov	Dec
Blackbird	✓	✓		✓	✓	✓		✓	✓	✓	✓	✓
Blue Tit	✓	✓	✓	✓	✓	✓	✓	✓	✓	✓	✓	✓
Carrion Crow	✓	✓	✓	✓	✓	✓	✓		✓	✓	✓	✓
Collared Dove		✓	✓		✓	✓	✓	✓	✓	✓	✓	✓
Feral Pigeon												✓
Goldfinch	✓	✓	✓		✓	✓	✓	✓		✓		✓
Great Tit	✓	✓	✓	✓	✓	✓	✓	✓		✓	✓	✓
Greenfinch	✓	✓				✓	✓	✓	✓		✓	
House Sparrow	✓	✓	✓	✓	✓	✓	✓	✓	✓	✓	✓	✓
Jackdaw			✓	✓	✓	✓		✓	✓	✓	✓	✓
Magpie	✓		✓	✓	✓	✓	✓	✓	✓	✓	✓	✓
Robin	✓	✓	✓	✓	✓	✓	✓	✓	✓	✓	✓	✓
Starling	✓	✓		✓	✓	✓	✓	✓		✓	✓	✓
Woodpigeon	✓	✓	✓	✓	✓	✓	✓	✓	✓	✓	✓	✓
Wren	✓											

## Appendix C3 Balmoral Road

A tick indicates that the species was present either in a garden or flying over.

Species	Jan	Feb	Mar	Apr	May	Jun	Jul	Aug	Sep	Oct	Nov	Dec
Blackbird	✓	✓	✓	✓	✓	✓	✓	✓	✓	✓	✓	✓
Blackcap	✓											
Black-headed Gull	✓	✓	✓								✓	✓
Blue Tit	✓	✓	✓	✓	✓	✓	✓	✓	✓		✓	✓
Buzzard		✓	✓	✓		✓	✓		✓	✓		
Carrion Crow	✓	✓	✓	✓	✓	✓	✓	✓	✓	✓	✓	✓
Chaffinch	✓	✓	✓								✓	✓
Chiffchaff			✓	✓								
Coal Tit	✓		✓	✓	✓	✓	✓	✓	✓	✓	✓	✓
Collared Dove	✓	✓	✓			✓	✓	✓				✓
Duncock	✓	✓	✓	✓		✓				✓	✓	✓
Feral Pigeon	✓	✓	✓	✓	✓	✓	✓	✓	✓	✓	✓	✓
Goldcrest	✓	✓		✓		✓		✓	✓	✓	✓	✓
Goldfinch	✓	✓	✓	✓	✓	✓	✓	✓	✓	✓	✓	✓
Great Spotted Woodpecker							✓					
Great Tit	✓			✓	✓	✓			✓		✓	✓
Grey Wagtail										✓		
Herring Gull	✓	✓	✓	✓	✓	✓	✓	✓		✓	✓	✓
House Sparrow	✓			✓	✓	✓	✓	✓			✓	✓
Jackdaw	✓	✓	✓	✓	✓	✓	✓	✓	✓	✓	✓	✓
Lesser Black-backed Gull	✓	✓	✓	✓	✓	✓	✓	✓	✓	✓	✓	✓
Long-tailed Tit											✓	
Magpie	✓	✓	✓	✓	✓	✓	✓	✓	✓	✓	✓	✓
Mallard				✓								
Mute Swan												✓
Pied Wagtail	✓	✓								✓	✓	✓
Raven	✓	✓		✓	✓	✓	✓	✓	✓	✓		✓
Red Kite							✓					
Robin	✓	✓	✓	✓	✓	✓	✓	✓	✓	✓	✓	✓
Rook			✓		✓							
Sparrowhawk			✓		✓	✓	✓					
Starling	✓	✓	✓	✓	✓	✓	✓	✓	✓	✓	✓	✓
Swallow										✓		
Swift					✓	✓	✓	✓				
Woodpigeon	✓	✓	✓	✓	✓	✓	✓	✓	✓	✓	✓	✓
Wren	✓		✓								✓	
<b>Total species</b>	<b>24</b>	<b>20</b>	<b>22</b>	<b>21</b>	<b>19</b>	<b>22</b>	<b>21</b>	<b>18</b>	<b>16</b>	<b>19</b>	<b>22</b>	<b>23</b>

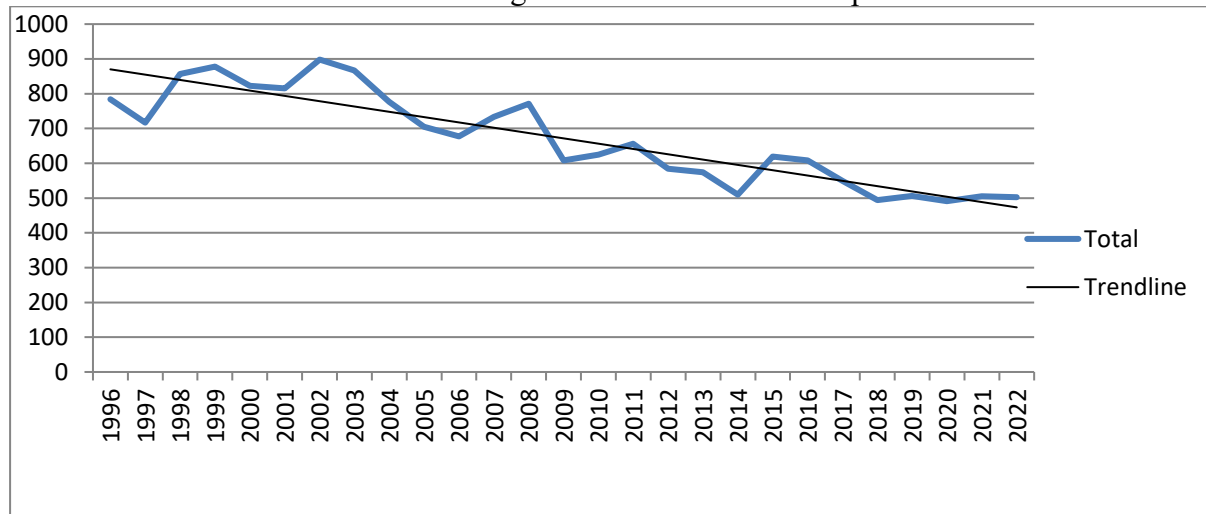
## Appendix C4 Manor Road garden

A tick indicates that the species was present either in the garden or flying over..

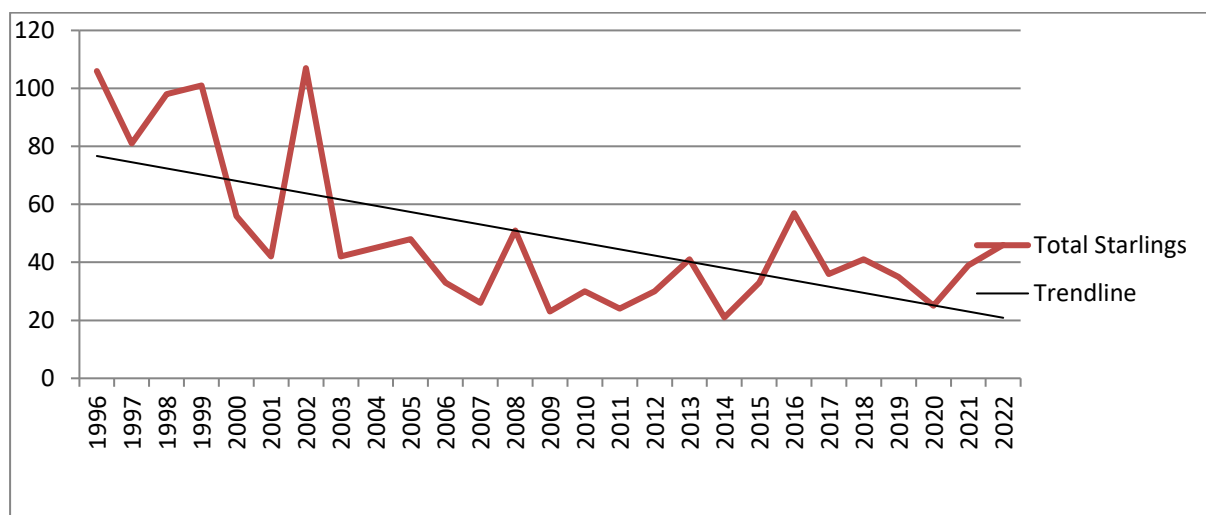
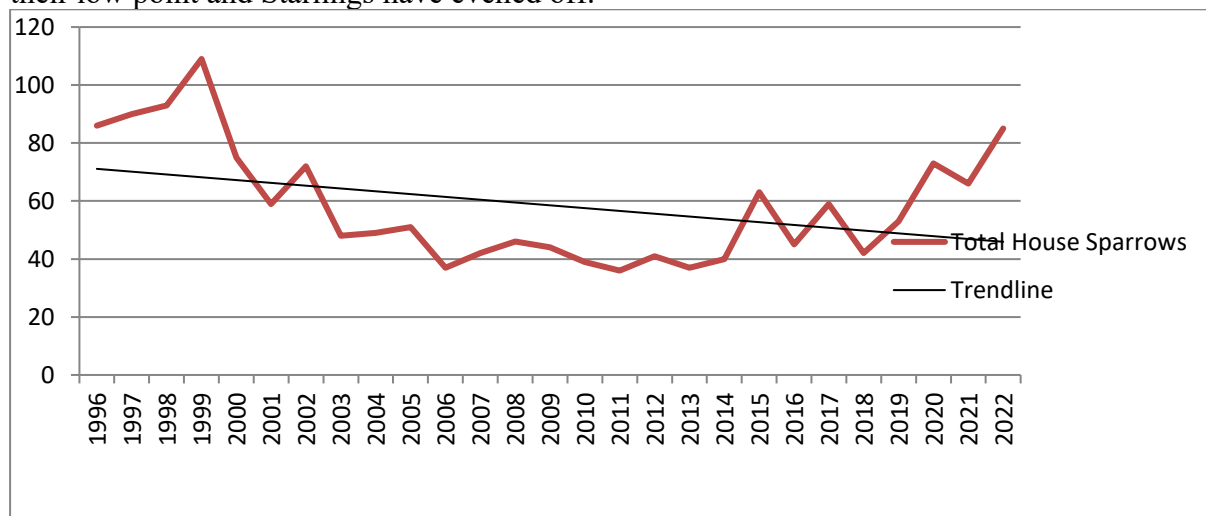
Species	Jan	Feb	Mar	Apr	May	Jun	Jul	Aug	Sep	Oct	Nov	Dec
Barn Owl										✓		
Blackbird	✓	✓	✓	✓	✓	✓	✓	✓	✓	✓	✓	✓
Black-headed Gull		✓									✓	
Blue Tit	✓	✓	✓	✓	✓	✓	✓	✓	✓	✓	✓	✓
Buzzard									✓			
Carrion Crow		✓	✓	✓	✓	✓	✓	✓	✓	✓	✓	✓
Chaffinch	✓		✓							✓	✓	✓
Chiffchaff			✓	✓	✓	✓	✓					
Coal Tit	✓			✓	✓					✓	✓	✓
Collared Dove					✓	✓	✓	✓	✓	✓		✓
Cormorant											✓	
Duncock	✓	✓	✓	✓	✓	✓	✓	✓	✓	✓	✓	✓
Feral Pigeon	✓	✓	✓	✓	✓	✓	✓	✓	✓	✓	✓	✓
Fieldfare	✓											✓
Garden Warbler								✓				
Goldfinch	✓	✓	✓	✓	✓	✓	✓	✓		✓	✓	✓
Great Spotted Woodpecker					✓							
Great Tit	✓	✓	✓	✓	✓	✓	✓	✓	✓	✓	✓	✓
Green Woodpecker			✓		✓	✓	✓			✓		
Grey Wagtail									✓	✓		
Herring Gull			✓	✓			✓		✓	✓	✓	✓
House Sparrow	✓	✓	✓	✓	✓	✓	✓	✓	✓	✓	✓	✓
Jackdaw				✓	✓	✓	✓			✓		
Kestrel						✓						
Long Tailed Tit	✓	✓	✓						✓	✓	✓	✓
Magpie	✓	✓	✓	✓	✓	✓	✓	✓	✓	✓	✓	✓
Pied Wagtail												✓
Raven			✓						✓			
Redwing	✓	✓										
Robin	✓	✓	✓	✓	✓	✓	✓	✓	✓	✓	✓	✓
Rook							✓		✓	✓	✓	✓
Song Thrush			✓				✓					
Sparrowhawk												✓
Starling	✓	✓	✓	✓	✓	✓	✓	✓	✓	✓	✓	✓
Tawny Owl	✓	✓								✓	✓	
Willow Warbler			✓	✓								
Woodpigeon	✓	✓	✓	✓	✓	✓	✓	✓	✓	✓	✓	✓
Wren	✓	✓	✓				✓	✓		✓		✓

## Appendix C5 Analysis of breeding birds in central Keynsham

Surveys of birds counted in a one kilometre square in central Keynsham since 1996 for the British Trust for Ornithology and undertaken by the same recorder have been analysed. The square has a mixture of built up parts and the Memorial Park. This graph shows accumulated totals of all birds counted during the breeding season between April and June. Sixty-one species have been seen over this period but many will not have actually bred in the area. The trendline shows that there has been a significant decline over this period.



House Sparrows and Starlings have been looked at in more detail. House Sparrows have past their low point and Starlings have evened off.



## Appendix D Map of the Keynsham area

The area covered by this report is within the solid line.

