



**Your LED Display Lighting Solution**

## **Product Catalogue**

- LED Light Box
- LED Light Panel
- LED Spot Light
- LED Tape Light
- LED Linear Light
- LED Under Cabinet Light
- LED Lamp
- LED Module



As LumiFocus Lighting, we believe that the right lighting is essential to your display, no matter if it is in a jewellery case, a specialty shelves, or even an entire superstore. The right lighting will bring out the exact result to showcase your products, attract customers, and increase your business.

We know this because we have done so many display lighting projects by not only using the most advanced lighting technology and the highest quality product, but also our deep understanding about the lighting needs from our customers .

Our High Performance LED Display Lighting System is the result of the most current technology and customer insights.

As a dedicated, highly professional lighting company, we keep our focus on providing our customers with high-end LED display lighting solutions.

In the past seven years, through continuous endeavours, we have completed lighting upgrades for more than 200 hotels and provided display lighting solutions for more than 150 top brand stores. We are a leader in this area.

## **Our Strengths**

- ❖ Our deep understanding about customers' needs accumulated through hundreds of successful projects
- ❖ Our proved professional LED lighting solutions that always exceed customers' expectations
- ❖ Our advanced and reliable products at competitive price





## LED LIGHTBOX



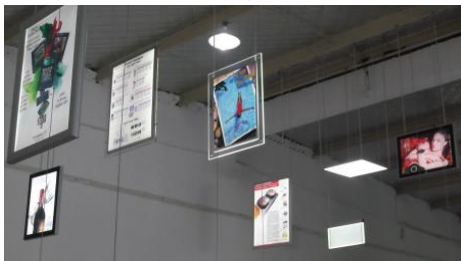
Super Slim Type



Crystal Type



Curved Type



Double-sided



Edge-lit

Back-lit

### Super Slim LED Lightbox

LUMIFOCUS supplies all sizes of LED lightboxes, including high brightness back-lit type, super slim edge-lit type, fashionable crystal type and curved type. These LED lightboxes use less energy, last longer, require less maintenance, provide excellent rendering for images. They also come in mounting and opening structure to provide quick and easy installation and graph change.

#### Benefits

- **Slim body** – fit well with most environments.
- **High brightness, high uniformity** – provide strong image in a crowded environment.
- **Long life** – avoid bulb replacement and image damage associated with traditional light panel.
- **High efficient** – use less energy, especially in 24/7 work condition.
- **Various mounting and opening options** – easy installation and image changing for different situation.
- **Flat or curved, one-side or double-side options** – provide flexibility on display
- **Low heat, no UV, no IR** – reduce image color fading. Keep display afresh in a long time.
- **Low voltage (12V or 24V)** – Safe to use.
- **Free of mercury and hazardous materials** – Safe to use. No disposal concern

#### Applications

- Shopping mall, retail stores, restaurants, bars, cafés, etc.

#### Ordering Information

ITEM NUMBER		L in	W in	H in	Color Temperature	W	V	t (h)
LFLB/S/A/2	Super Slim Type	25.0	18.0	0.31	6000	30	12	30000
LFLB/S/A/3	Super Slim Type	18.5	13.2	0.31	6000	20	12	30000
LFLB/SC/A/2	Super Slim Curved Type	25.0	18.0	0.31	6000	30	12	30000
LFLB/SC/A/3	Super Slim Curved Type	18.5	13.2	0.31	6000	20	12	30000
LFLB/C/A/3	Crystal Type. Single Side	16	20.8	1.00	6000	20	12	30000



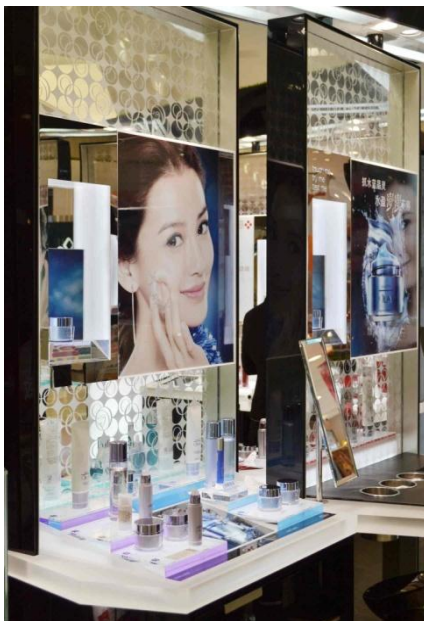
## LED LIGHT PANEL



Flat Type



Curved Type



### LED Light Panel in All Sizes and Shapes

LUMIFOCUS LED panel offers a much attractive way to display high value products. Its high brightness and high uniform light surface is the perfect show place for every items placed on it. When used as a backdrop, it accentuates any product put in front of it. It also comes in various sizes and shapes, to suit different requirements in many applications.

#### Benefits

- **High brightness, high uniformity** – excellent display place for high value products.
- **Various sizes and shapes** – suit for requirements in different applications: shelves, backdrops, signs, logos, etc..
- **Long life** – low maintenance cost.
- **High efficient** – use less energy, especially in 24/7 work condition.
- **Simple mounting structure** – easy installation and maintenance.
- **One-side or double-side options** – provide both lighting and display functions
- **Low heat, no UV, no IR** – protect items on display.
- **Low voltage (12V or 24V)** – Safe to use.
- **Free of mercury and hazardous materials** – Safe to use. No disposal concern

#### Applications

- Shelves, backdrops, exhibition, signs, pathfinding board, logos in retail stores, restaurants, bars, cafés, etc.

#### Ordering Information

ITEM NUMBER		L in	W in	H in	Color Temperature	W	V	t(h)
LFLP/S/A2	Single Side A2 Size	25.0	18.0	0.2	6000	20	12	30000
LFLP/D/A2	Double Side A2 Size	25.0	18.0	0.2	6000	20	12	30000
LFLP/S/A3	Single Side A3 Size	18.5	13.2	0.2	6000	10	12	30000
LFLP/D/A3	Double Side A3 Size	18.5	13.2	0.2	6000	10	12	30000





# LED TAPE LIGHT



Your LED Display Lighting Solution



Regular



Waterproof



RGB



Dream Color



Side-lit



Dimmer & Control

## High Power LED Tape Light

LUMIFOCUS High Power LED Tape provides high-quality energy-efficient lighting in a flexible form. Its high light output combining with flexibility of mounting, cutting, and connection makes it a perfect solution for applications requiring high brightness, high color rendering, low glare, low heat, no UV, no IR lighting in narrow spaces with mounting restrictions. Its ease-of-use and low maintenance throughout life span reduce long term cost and operation disruption.

### Benefits

- **High light output** – generates up to 1000lm per meter. Provides enough light for most display or under cabinet applications
- **Flexible mounting, connection and cutting options** – provides many combinations to suit difference lighting requirement in various circumstances.
- **Compact profile** – can be aesthetically integrated into glass, wood and other display cabinet.
- **High efficient** - energy savings up to 80%; low energy cost.
- **Improved visibility and presentation of the objects on display** -uniform lighting throughout the entire cabinet; sparkling lighting effect
- **High color rendering ability** – reveals true color of objects on display
- **Multiple white light available** – optimum lighting for a wide range of objects
- **Low heat, no UV, no IR** - Low temperature in the cabinet; ideal for illuminating small or heat-sensitive objects, such as jewels, food, cosmetics, painting, etc.
- **Long life. Low light output depreciation** – low maintenance cost throughout the lifetime of the cabinets
- **Free of mercury and hazardous materials** – Safe to use. No disposal concern

### Applications

- Display or decorative lighting for shop shelves, display cases, restaurants, bars, cafés, residential kitchens, etc.

### Ordering Information

ITEM NUMBER	Color Temperature	W	V	°	Lm/M	t[h]	L mm	W mm
LFTP-5050-36-WW	3000	36	12 DC	120	460	30000	5000	10
LFTP-5050-36-W	6000	36	12 DC	120	500	30000	5000	10
LFTP-3528-48-WW	3000	36	12 DC	120	680	30000	5000	10
LFTP-3528-48-W	6000	36	12 DC	120	720	30000	5000	10
LFTP-5050-72-WW	3000	36	12 DC	120	960	30000	5000	10
LFTP-5050-72-W	6000	36	12 DC	120	1000	30000	5000	10



## LED LAMP



MR16 5W



PAR30 15W



HIPAR30 25W



AR111 15W

### High Efficient Accent Lighting Lamp

This LUMIFOCUS LED lamps provide energy saving lighting solution for hospitality and retail industries where the light is normally on all the time. Its high quality, low heat, no UV or IR, clearly defined beam spread light is excellent to reveal the true color of the objects on display, even those heat-sensitive objects which need special protection under halogen lights.

#### Benefits

- **High quality white light** – reveals true color of the objects
- **High efficiency** - up to 80% energy saving compared with halogen lamp
- **Long life** – lasts 10 times longer than halogen lamp. Lower maintenance costs
- **Clearly defined beam spread** – precise lighting effect
- **Multiple beam angles available** - offer narrow, semi-flood or flood lighting options
- **Low heat, no UV or IR radiation** – ideal for illuminating sensitive objects
- **Retrofittable to existing incandescent or halogen lamps**– easy to use
- **Free of mercury and hazardous materials** – environmental friendly

#### Features

- **High quality LED** - High performance through whole lifetime
- **High light intensity** - Strong accent effect
- **Special heat dissipation structure** - Stable and long life
- **White options:** warm white or cool white to suit different display needs
- **Dimming option available**

#### Applications

- **Retail:** Shops, supermarkets, galleries, museums, exhibitions.
- **Hospitality:** hotels, restaurants, bars, cafés

#### Ordering Information

ITEM NUMBER	Color Temperature	W	V	Beam Angle	cd	t(m)	Φ max. (mm)	h max. (mm)	Base	Life (hrs)
LED MR16/5W/30K/N	3000	5	12	15	3500	30000	50	44	GU5.3	100
LED MR16/5W/40K/M	4000	5	12	30	2150	30000	50	44	GU5.3	100
LED PAR30/15W/30K/M	3000	15	120	30	7300	30000	95	98	E26	16
LED PAR30/15W/40K/W	4000	15	120	60	2650	30000	95	98	E26	16
LED HIPAR30/25W/30K/N	3000	25	700	15	12000	30000	95	105	E26	10
LED HIPAR30/25W/40K/M	4000	25	700	30	5200	30000	95	105	E26	10
LED AR111/15W/30K/N	3000	15	12	15	11200	30000	111	72	G53	16
LED AR111/15W/40K/M	4000	15	12	40	2950	30000	111	72	G53	16



## LED SPOT LIGHT



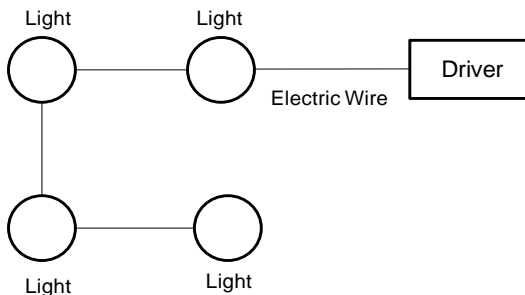
Type A



Type B



Type C



### High Power LED Mini Light

LUMIFOCUS High Power LED Mini Light provides high intensity, rich color and low heat lighting in a very compact size. Its aluminum body and directional reflector concentrate light beam to required area while aiming angle can be adjusted. It is a perfect lighting solution for places requiring high quality, low glare, low heat lighting as well as low maintenance cost and less operation disruption.

#### Benefits

- **High lighting intensity** – provides excellent light in restrained spaces.
- **Plug-in connection with each other and power supply** – easy installation. Reduce separate wiring.
- **Compact size** – fit for small spaces to provide accent lighting.
- **Various designs and shapes** – meet users' specific requirement.
- **High efficient** - energy savings up to 80%; low energy cost.
- **High color rendering ability** – reveals true color of objects on display
- **Multiple white light available** – optimum lighting for a wide range of objects
- **Low heat, no UV, no IR** - Low temperature in the cabinet; ideal for illuminating small or heat-sensitive objects, such as jewels, food, cosmetics, painting, etc.
- **Long life. Low light output depreciation** – low maintenance cost throughout the lifetime
- **Low voltage (12V or 24V)** – Safe to use.
- **Free of mercury and hazardous materials** – Safe to use. No disposal concern

#### Applications

- Display cases and shelves in stores, restaurants, bars, cafés, etc.

#### Ordering Information

ITEM NUMBER	Color Temperature	W	V	lm	Beam Angle	t [h]	d [mm]	H [mm]	W [mm]	W [mm]
LFML/A/3W/30K	3000	3	12	140	120	30000	41.5	25	35	100
LFML/A/3W/60K	6000	3	12	150	120	30000	41.5	25	35	100
LFML/B/3W/30K	3000	3	12	140	120	30000	52	18	44	100
LFML/B/3W/60K	6000	3	12	150	120	30000	52	18	44	100
LFML/C/3W/30K	3000	3	12	140	80	30000	52	18	29	100
LFML/C/3W/60K	6000	3	12	150	80	30000	52	18	29	100





## LED LINEAR



U-Type: Flat



V-Type: Angle Adjustable



A-Type: Corner Mounted



C-Type: Non-Gap



T-Type: High Output

### High Brightness Linear Display Lighting

LUMIFOCUS LED Linear is a high-quality energy-efficient lighting solution for display cabinet lighting. It can be easily integrated into any display cabinets, providing highly uniform, high color rendering, low glare, low heat, no UV, no IR light for even sensitive objects. Its consistent output throughout its long service life means low maintenance cost and less operation disruption.

#### Benefits

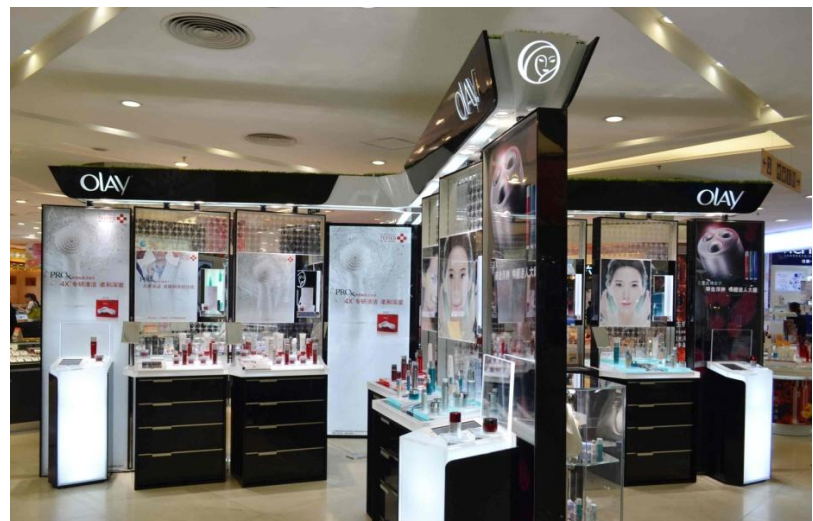
- **Improved visibility and presentation of the objects on display** - uniform lighting throughout the entire cabinet; sparkling lighting effect
- **Compact profile** – can be aesthetically integrated into glass, wood and other display cabinet.
- **Aiming position adjustable** – change aiming angle to suit different applications
- **High efficient** - energy savings up to 80%; low energy cost.
- **High color rendering ability** – reveals true color of objects on display
- **Multiple white light available** – optimum lighting for a wide range of objects
- **Low heat, no UV, no IR** - Low temperature in the cabinet; ideal for illuminating small or heat-sensitive objects, such as jewels, food, cosmetics, painting, etc.
- **Long life. Low light output depreciation** – low maintenance cost throughout the lifetime of the cabinets
- **Low voltage (12V or 24V)** – safe to use
- **Free of mercury and hazardous materials** – no disposal concern

#### Applications

- Cabinet display lighting for retail: jewelry, food, cosmetics, artifact, etc.
- Cove and ambient lighting for hospitality: hotels, restaurants, bars, cafés, etc.

#### Ordering Information

ITEM NUMBER	Color Temperature	W	V	°	lm	t[h]	L mm	W mm	H mm	
USLIM 5050/300/30K/12V	3000	5	12	120	250	30000	300	25	15	40
USLIM 5050/600/40K/12V	4000	10	12	120	500	30000	600	25	15	40
VSLIM 5050/300/30K/12V	3000	5	12	120	250	30000	600	25	15	40
VSLIM 5050/600/40K/12V	4000	10	12	120	500	30000	600	25	15	40
ASLIM 5050/300/30K/12V	3000	5	12	120	250	30000	300	25	15	40
ASLIM 5050/600/60K/12V	6000	10	12	120	560	30000	600	25	15	40
TBAR 5050/300/30K/12V	3000	5	12	120	250	30000	300	25	15	40
TBAR 5050/600/60K/12V	6000	10	12	120	560	30000	600	25	15	40





## LED LINEAR ENCLOSED

### High Brightness LED Linear Enclosed

This LUMIFOCUS LED Linear light is a high-quality energy-efficient lighting solution for under cabinet lighting. It consists of an enclosed extruded aluminum body with acrylic lens and black plastic ends, providing uniform, high color rendering, low glare, low heat, no UV, no IR lighting for sensitive objects. Its consistent output throughout its long service life means low maintenance cost and less operation disruption.

#### Benefits

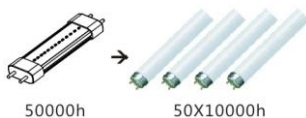
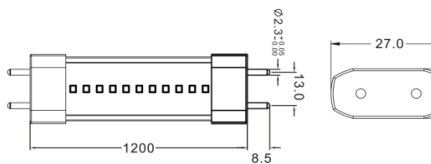
- **Compact profile in an enclosed body** – can be aesthetically integrated into glass, wood and other display cabinet.
- **Various length available** – from 1 ft to 4 ft to meet users' requirement.
- **Linkable** – Soft or rigid connectors provide seamless connection between fixtures. Avoid separate wiring.
- **Improved visibility and presentation of the objects on display** -uniform lighting throughout the entire cabinet; sparkling lighting effect
- **High efficient** - energy savings up to 80%; low energy cost.
- **High color rendering ability** – reveals true color of objects on display
- **Multiple white light available** – optimum lighting for a wide range of objects
- **Low heat, no UV, no IR** - Low temperature in the cabinet; ideal for illuminating small or heat-sensitive objects, such as jewels, food, cosmetics, painting, etc.
- **Long life. Low light output depreciation** – low maintenance cost throughout the lifetime of the cabinets
- **Low voltage (12V or 24V)** – Safe to use.
- **Free of mercury and hazardous materials** – Safe to use. No disposal concern

#### Applications

- Uniform lighting for display cases, shelves, residential kitchens, restaurants, bars, cafés, etc.

#### Ordering Information

ITEM NUMBER	Color Temperature	W	V	△	lm	t(h)	L mm	W mm	H mm	
TUBE/600/30K/12V	3000	10	12	120	700	30000	600	27	12	40
TUBE/600/40K/12V	4000	10	12	120	730	30000	600	27	12	40
TUBE/600/60K/12V	6000	10	12	120	760	30000	600	27	12	40
TUBE/1200/30K/12V	3000	20	12	120	1400	30000	1200	27	12	40
TUBE/1200/40K/12V	4000	20	12	120	1460	30000	1200	27	12	40
TUBE/1200/60K/12V	6000	20	12	120	1520	30000	1200	27	12	40



## LED UNDERCABINET

### High Brightness LED Linear Under Cabinet Lighting

This LUMIFOCUS LED under cabinet light is a high-quality energy-efficient lighting solution for under cabinet lighting, such as in kitchen. Its extruded aluminum body coated with UV resistant powder finish, providing highly uniform, high color rendering, low glare, low heat light. Its consistent output throughout its long service life means low maintenance cost and less operation disruption.

#### Benefits

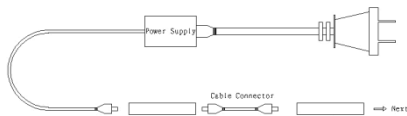
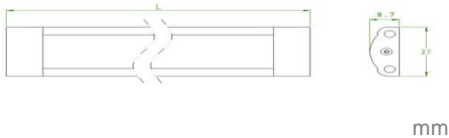
- **Improved visibility and presentation of the objects on display** -uniform lighting throughout the entire cabinet; sparkling lighting effect
- **Compact profile** – can be aesthetically integrated into glass, wood and other display cabinet.
- **Linkable** – Avoid separate wiring.
- **Low voltage (12V or 24V)** – Safe to use.
- **High efficient** - energy savings up to 80%; low energy cost.
- **High color rendering ability** – reveals true color of objects on display
- **Multiple white light available** – optimum lighting for a wide range of objects
- **Low heat, no UV, no IR** - Low temperature in the cabinet; ideal for illuminating small or heat-sensitive objects, such as jewels, food, cosmetics, painting, etc.
- **Long life. Low light output depreciation** – low maintenance cost throughout the lifetime of the cabinets
- **Free of mercury and hazardous materials** – Safe to use. No disposal concern

#### Applications

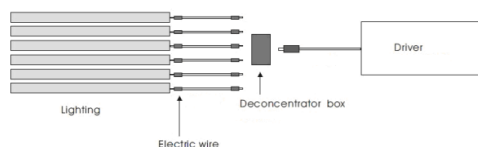
- Under cabinet lighting for residential kitchens, restaurants, bars, cafés, etc.

#### Ordering Information

ITEM NUMBER	Color Temperature	W	V	$\Delta^2$	lm	t(h)	L mm	W mm	H mm	
LFUC/A/300/30K/12V	3000	3	12	90	200	30000	300	25	8.7	40
LFUC/A/300/60K/12V	6000	3	12	90	220	30000	300	25	8.7	40
LFUC/A/500/30K/12V	3000	5	12	90	330	30000	500	25	8.7	40
LFUC/A/500/60K/12V	6000	5	12	90	360	30000	500	25	8.7	40
LFUC/A/800/30K/12V	3000	9	12	90	530	30000	800	25	8.7	40
LFUC/A/800/60K/12V	6000	9	12	90	580	30000	800	25	8.7	40



Connection Option 1



Connection Option 2

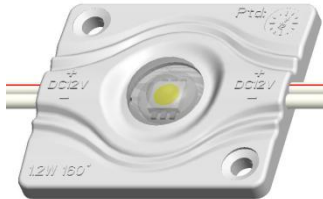




## LED MODULES



LED 2.8W



LED 1.4W



LED Side Light 1.4W



LED Chain Light



LED Strip Curtain

### High Brightness LED Modules

LUMIFOCUS LED Modules provide long life, energy saving lighting solution for a wide range of lighting applications, including signs, logos, light boxes, retail stores, exhibition booths, architectural lightings. Thanks to specially designed optic lens and heat sink, they produce brighter and more uniform light effects.


#### Benefits

- **High power LED with heat sink, up to 2.8W per light.** - high brightness
- **Specially designed optic lens** - uniform light, reduced depth, fewer lights
- **Low power consumption** – big energy saving, especially for 7/24 applications
- **Long life. Low light output depreciation** – low maintenance cost
- **Multiple white or color light available** – suit for a wide range of applications
- **Compact size** – can be aesthetically integrated into many places with many materials.
- **Free of mercury and hazardous materials** – Safe to use. No disposal concern

#### Applications

- Signs, logos, lightboxes, exhibition display, retail display, architectural lighting.

#### Ordering Information

ITEM NUMBER		L mm	W mm	H mm		Color Temperature	W	V	t(h)
LFMD/2.8W/60	LED 2.8W	54	39	8	160	6000	2.8	12	30000
LFMD/1.4W/60	LED 1.4W	45	45	8	160	6000	1.4	12	30000
LFMS/1.4W/60	LED Side 1.4W	45	45	8	160	6000	1.4	12	30000
LFMC/2/60	LED Chain 2 LED	65	20	5	160	6000	0.5	12	30000
LFMC/3/60	LED Chain 3 LED	80	20	5	160	6000	0.75	12	30000
LFMF/4/60	LED Curtain	300	10	5	160	6000	4.0	12	30000



Bright and Uniform Light



# LUMIFOCUS LIGHTING

Tel: 1.416.892.0272

Email: [sales@lumifocus.com](mailto:sales@lumifocus.com)

Unit 8, 110 West Beaver Creek  
Road. Richmond Hill. ON.  
L4B1J9

