



PHUSAMA

CONSULTING

COMPANY PROFILE

PHUSAMA CONSULTING (PTY) LTD
REG: 2014/276303/07
VAT NO: 4040272884

Plot 6, Allan RD
Civale Bapsfontein
Kempton Park.
1530.

2
0
2
4



INTRODUCTION

"Welcome to Phusama Consulting, where innovation meets expertise in the dynamic world of construction. As a premier industry leader specializing in building, civil works, steel engineering, and tarring/paving,

We bring a legacy of excellence and a commitment to quality to every project we undertake. With a rich history rooted in craftsmanship and a forward-thinking approach to construction solutions, we have established ourselves as trusted partners in bringing visions to life.

Our dedicated team of professionals combines technical prowess with creative ingenuity to deliver unparalleled results, shaping skylines and transforming landscapes with each endeavor. At Phumasa Consulting, we don't just build structures; we forge lasting relationships, inspire progress, and pave the way for a brighter future in construction."



PHUSAMA CONSULTING



TABLE OF CONTENTS

About Company

04

CEO Message

06

Vision & Mission

07

Milestone

08

Our Service

09

The Process

11

Our Goals

12

Our Projects

13

Clients

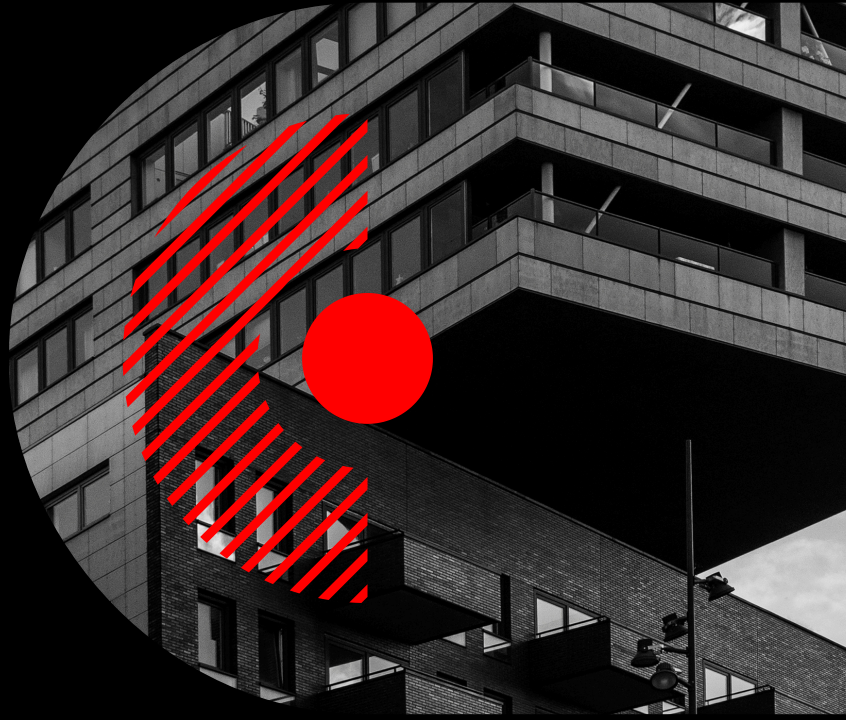
20

Meet the team

22

Connect with us

24



ABOUT COMPANY

PHUSAMA CONSULTING PVT LTD has emerged from Shitru Construction and Projects CC due to the vision of its Director, Mr. Trust Mtisi, of growing the company.

Shitru Construction and Projects CC started operating in 2009 through to 2014 when Phusama Consulting PVT LTD emerged.

The company has 1 permanent engineer and 5 highly skilled operators. The company operates within the guidelines of the Customer Policies and Procedures and ensures compliance at all times.

COMPANY OVERVIEW

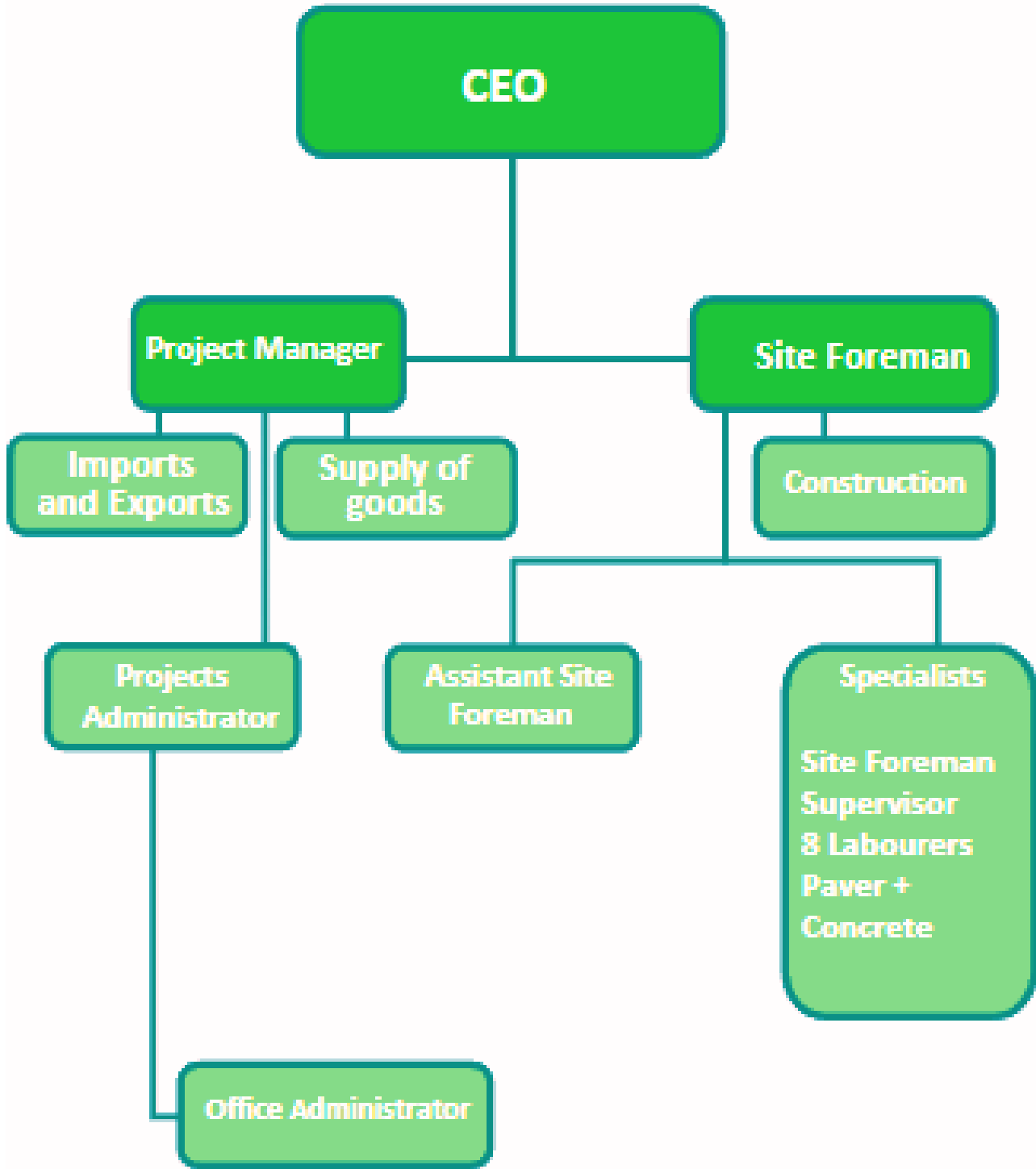
We specialize in construction, Civil Works, Steel Engineering, Electrical works, building maintenance services and Tenant Installations. We have also ensured that we adopt ecofriendly business practices.



PHUSAMA CONSTRUCTION



COMPANY STRUCTURE





OUR CEO



TRUST MTISI

"As CEO of Phusama Consulting, specializing in building, civil works, steel engineering, and tarring/paving, I am immensely proud to lead a team dedicated to excellence in every aspect of our operations. With a steadfast commitment to quality, safety, and innovation,

we have earned a reputation as industry leaders, consistently delivering exceptional results that exceed client expectations. Our portfolio showcases a diverse range of projects, each a testament to our expertise and unwavering dedication to customer satisfaction. From housing projects to intricate infrastructure,

our skilled professionals bring unparalleled craftsmanship and meticulous attention to detail to every endeavor. As we continue to evolve and adapt to the ever-changing landscape of construction, our core values remain unchanged: integrity, collaboration, and a relentless pursuit of excellence. Together, we are shaping the future of construction, one project at a time."





VISION & MISSION

Vision

At Phusama Consulting, our vision is to redefine the landscape of the construction industry through unwavering commitment to excellence, innovation, and sustainability. We aspire to be the foremost authority in building, civil works, steel engineering, and tarring/paving, setting new standards of quality and efficiency with every project we undertake. Our vision extends beyond merely constructing structures; we aim to create enduring landmarks that enrich communities, foster progress, and stand as testaments to our dedication to craftsmanship and ingenuity.

By leveraging cutting-edge technologies, embracing environmentally responsible practices, and nurturing a culture of collaboration and integrity, we envision a future where Phumasa is synonymous with excellence, trusted by clients and respected by peers worldwide. Together, we are shaping tomorrow's world, one project at a time."

Mission

At Phusama Consulting, our mission is to lead the construction industry with integrity, expertise, and a relentless pursuit of excellence. We are dedicated to delivering superior quality in building, civil works, steel engineering, and tarring/paving projects, tailored to meet the unique needs of each client. With a focus on safety, efficiency, and innovation, we strive to exceed expectations while adhering to the highest standards of craftsmanship and professionalism



Phusama Consulting





MILESTONE

GRANLIC TRADING 2014 TO DATE

Taring
Building and maintenance
Site Clearance
Concrete
Fencing
Building renovations



ALSTOM UBUNYE 2022

Award for Best Compliance in EHS.
Concrete
Roof repairs
Taring
Painting
Industrial steel work
Storm water drains





OUR SERVICES

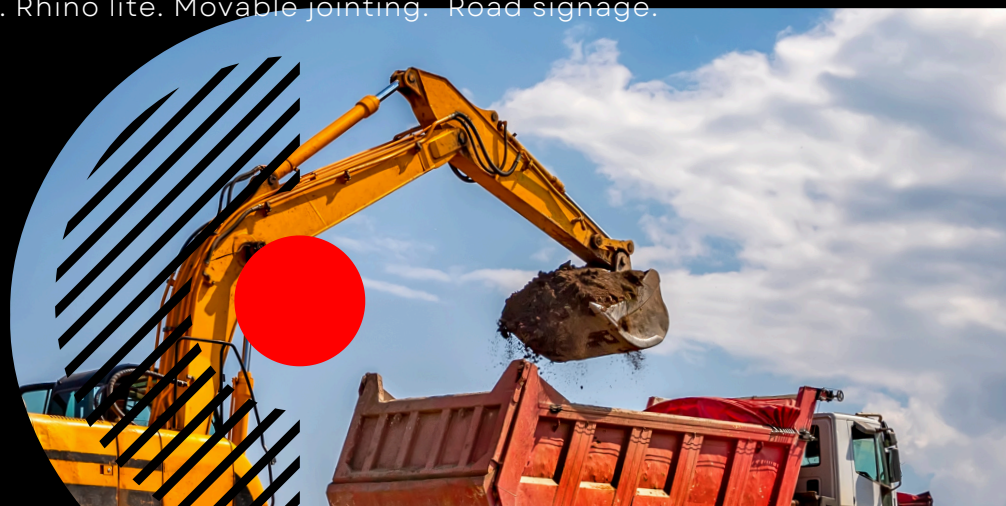
At Phumasa, we are dedicated to providing comprehensive construction solutions tailored to meet the diverse needs of our clients. Specializing in building, civil works, steel engineering, and tarring/paving, our expertise encompasses a wide range of projects, from complex infrastructure developments to meticulous paving installations. With a focus on quality, innovation, and client satisfaction, we strive to exceed expectations at every turn, delivering superior results that stand the test of time.

Building and Maintenance

Building and building refurbishment. Dry walling / partitioning. Ceilings and bulkheads. Tiling. Painting (building lead free paint and specialized epoxy machine and floor painting). Plumbing. Woodwork / Carpentry (hanging of doors). Hanging of doors, Lock and key fitting. Aluminum joinery. Gutter installations and maintenance. Roofing Down piping. Shade nets and carports. Roller shutter doors. Ceilings and cornices. Skirting. Road signage. Safety mirrors. Cleaning and Glazing. Cleaning gutters . Carpeting.

Civil Works

Road Construction and Rehabilitation. Earthworks and Excavation. Drainage Systems. Utility Infrastructure. Landscaping and Beautification. Retaining Walls and Erosion Control. Site Development. Environmental Remediation. Road Maintenance. Paving / Kerbing / Storm water channels potholes/speed humps. Bricklaying. Plastering. Repairing cracks. Concrete. Rhino lite. Movable jointing. Road signage.



Steel Engineering

Structural Steel . Steel Framing. Steel Reinforcement. Steel Roofing and Cladding.
Steel Piping and Plumbing.

Electrical

System Design. Consultation and Planning. Wiring and Cabling. Lighting Systems.
Generator and Backup Systems. Renewable Energy Systems: Installing solar panels.
Energy Efficiency Upgrades. Maintenance and Repairs. Compliance and Safety.
Automation and Control Systems.

Other Services

Suppliers of Goods.
Import and Export.
Transportation of Goods



THE PHUSAMA PROCESS

Process 1

Process begins with an in-depth consultation to understand their needs and vision. Our team of experts conducts thorough site assessments and feasibility studies to ensure optimal project planning and execution.

Process 2

With meticulous attention to detail, we develop customized solutions tailored to meet the specific requirements of each project, leveraging our expertise in building, civil works, steel engineering, and taring/paving

Process 3

Once the project scope and timeline are finalized, our dedicated project management team oversees every aspect of implementation, coordinating with subcontractors, suppliers, and regulatory authorities to ensure seamless progress. Throughout the construction phase, we maintain open communication channels with our clients, providing regular updates and addressing any concerns promptly.

Final Process

Our commitment to quality, safety, and client satisfaction drives us to deliver exceptional results, on time and within budget, exceeding expectations at every stage of the project lifecycle.





OUR GOALS

our goals are centered around excellence, innovation, and client satisfaction. We strive to be industry leaders in building, civil works, steel engineering, and taring/paving,

setting new standards of quality and efficiency with every project we undertake. Our aim is to consistently deliver superior results that exceed client expectations, while upholding the highest standards of safety and professionalism. We are committed to fostering strong partnerships with our clients, subcontractors, and suppliers, built on trust, integrity, and mutual respect.

Through continuous improvement, technological advancements, and sustainable practices, we aspire to leave a positive impact on the communities we serve, creating lasting legacies of excellence in construction





PROJECTS

our projects represent the culmination of our dedication to excellence and innovation in the industry. Specializing in building, civil works, steel engineering, and taring/paving, each project showcases our commitment to quality craftsmanship and meticulous attention to detail. From iconic skyscrapers to intricate infrastructure developments, our diverse portfolio reflects our versatility and expertise in delivering outstanding results.

CIVIL WORKS





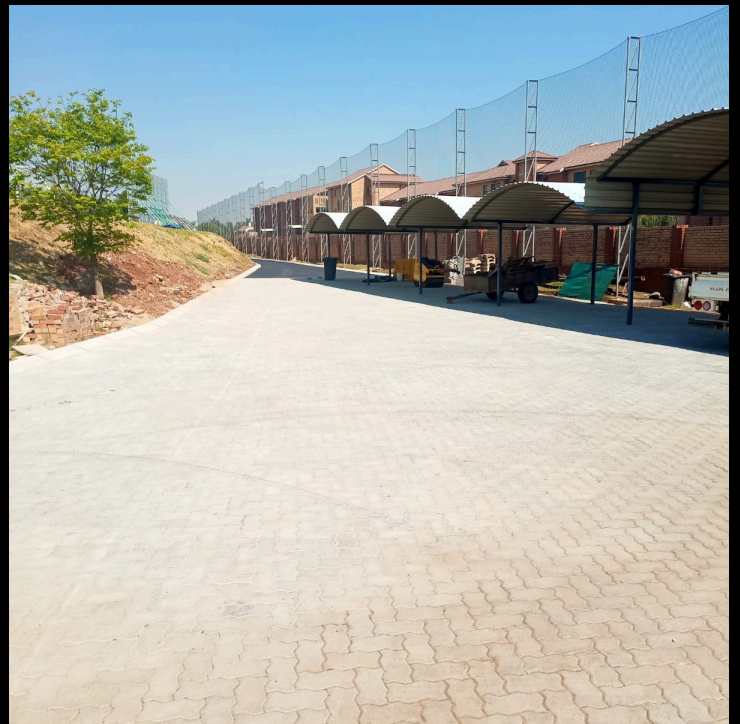
BUILDING WORK



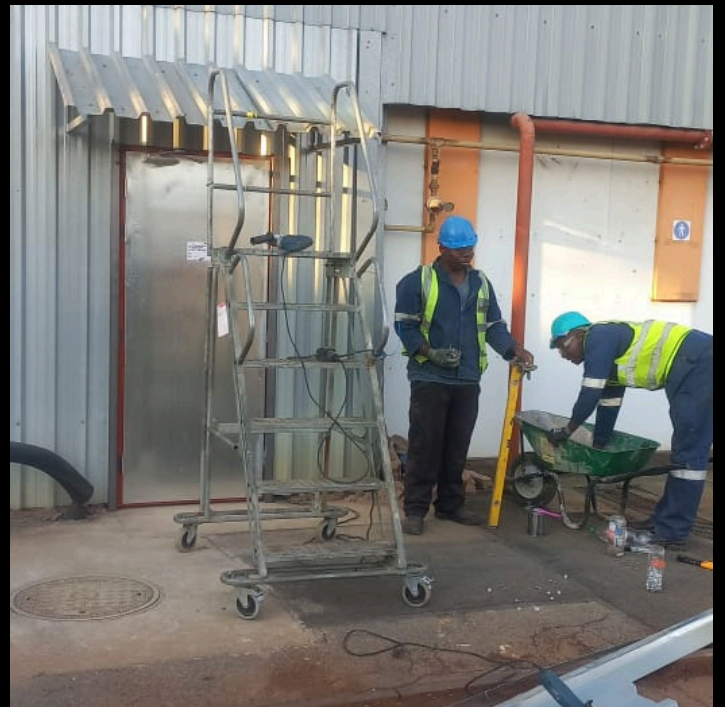
PHUSAMA CONSTRUCTION



PAVING



STEEL WORK



ELECTRICAL WORKS





TRANSPORT



A32



A32



A32





CLIENTS

ALSTOM

THYS FRANKEN-083 595 6560
ROBERT BRYANS-063 608 7795



TFI
International

ISANDO-010 023 4507
FORBES - 074 725 8167



GRAND LAKE

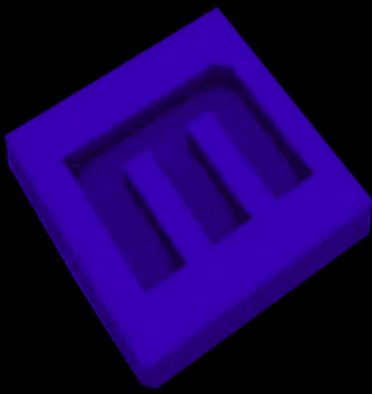
DEREK-083 412 2643
KESHWIN-082 925 9599



MOTSENG

INVESTMENT HOLDINGS

LESEDI 073 137 6664 (DIRECTOR)
PRASA-METRORAIL (UNION TRAIN STATION-WADEVILLI)



**MAPITSI
CIVIL WORKS**

TEL- 011 394 7343
SIMAN MAKATA - 082 385 9313



**LUBBE
CONSTRUCTION**

TEL-011 825 0160
EASTERN CAPE PROJECT
JABULANI NEUBE-PROJECT MANAGER-071 954 693



remako

MANAGER - FRANCIS LITETE-062 263 251



Phusama Consulting



MEET THE TEAM

LINCOLN
MTISI



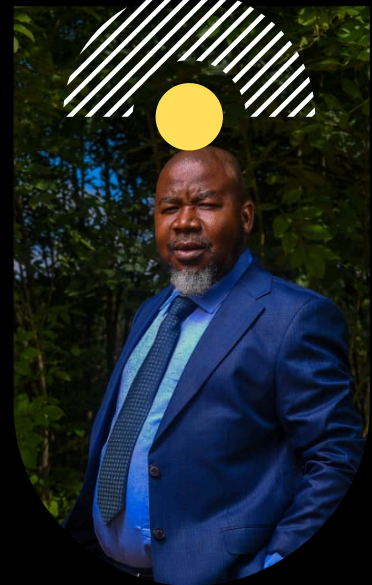
QUANTITY SURVEYOR

STANFORD
MUTASA



ACCOUNTANT

TRUST
MTISI



MANAGNG DIRECTOR

Our team is the backbone of our success. Comprised of dedicated professionals with expertise in building, civil works, steel engineering, and taring/paving, each member brings a unique set of skills and experiences to the table. From seasoned project managers to skilled craftsmen, our team is united by a common goal: to deliver exceptional results with integrity and innovation. With a shared commitment to excellence and client satisfaction, we collaborate seamlessly to bring visions to life and exceed expectations. Get to know the individuals who make our projects possible







CONNECT WITH US

Phusama Consulting

Connecting with us means tapping into a wealth of expertise and experience in the construction industry. Whether you're considering a new project, seeking advice, or looking to partner with a reliable contractor, we're here to help. With specialties in building, civil works, steel engineering, and taring/paving, our team is equipped to handle projects of any scale and complexity. Reach out to us today to discuss how we can bring your vision to life and make your construction goals a reality. Let's build something incredible together.



+27-83-752-8388



trustm@phusamaconsulting.com



www.phusamaconsulting.com



Plot 6, Allan Rd
Civale Bapsfontein
Kempton Park.
1530.