

**“Being an entrepreneur is a mindset. You have to see things as opportunities all the time.”**

Soledad O'Brien



**SEMICON  
VENTURES  
PVT LTD**

### Startup Hub & incubation Services

- bangaloreouting.in
- Adventure tours
- Agri tourism Hackathons
- Startup village
- Semiconventures.in
- EV charging station
- Pre owned Bikes and Cars
- EV 2 wheelers Subscriptions
- Semiconductor Business

SEMICON VENTURES PRIVATE LIMITED

#769, 2<sup>nd</sup> Floor, Work365 Space, Pema Enclave,  
Outer Ring rd., Kengeri st town, bangalore-560060

Registered Office Address:

#18, 6th Cross, M P Layout, Udaya Nagar, Kengeri,  
Bangalore South, Bangalore Rural- 560060,

**CHENNABASAVA C**

Founder : Semicon Ventures Pvt Ltd

[info@semiconventures.in](mailto:info@semiconventures.in)

[Call us : 9008007267](tel:9008007267)

<https://semiconventures.in/>

# Business Opportunities :

- ▶ EV Quad Bike Race/ Design and Trail Competition
- ▶ EV Portable Charging Stations Franchisee Business
- ▶ EV Design Consultation Services & Components Procurement Partner
- ▶ Gold Bonds Investor club & Startup Mentoring programs
- ▶ Smart Trade Group / Spot Buyers and Suppliers (Holidays as Perks)
- ▶ Lora Based Smart Agri pumps Starts with Subscription Model
- ▶ Smart Switch Home Automations
- ▶ Startup up mentoring and Incubation Services

## Current Business :

- Bikers club Off Road trial & Camping Facilities
- Universities Startup Incubation Consultations
- EV Charging Investment risings

## Data reference

- EV market Chagrin stations / Avnet Data
- Supreme Components data
- corporate outing Programs
- Big basket Data

SEMICON Ventures Pvt Ltd. (<http://semiconventures.in>)



# STARTUP VILLAGE EXPERIENCE CENTRE :

- Free Resort Membership
- Opportunity to Invest on Cottages & lands & Agriculture
- Startup Business Universities Programs
- Opportunity for the EV Logistic investments
- Opportunities College Franchisee
- Handling Bike bike Clubs Franchisee

<https://bangaloreouting.in/>



**NATUREDINE HOMESTAY**  
CAMPING AND HIKING EVENT

**Itinerary**

**Day 1**

- 4.30am Departure
- 11.30am Gaganas Chukki falls
- 1pm Check In Homestay
- 2.30pm Jeep Ride
- Birds Watching
- Village Tour
- 5pm Kayaking
- Campfire
- Open Theater

**Day 2**

- Sunrise Trek
- 4 to 8 km - Moderate
- 8.30am Breakfast
- 11.30am Departure
- 06.30pm Bangalore

**Attractions**

- Hogenakal Hills
- Talakadu
- BR Hills
- Somnathapura
- Dhondallay (Buddha Temple)
- Nagavali

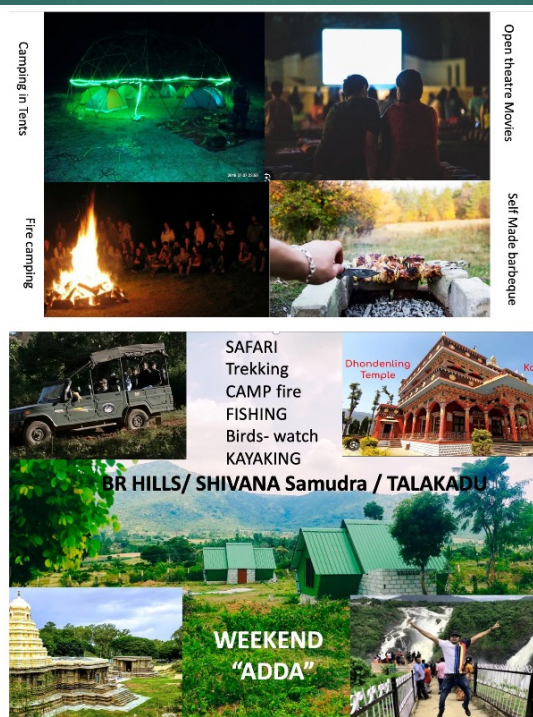
**Activities**

- Bird Sight
- Camping
- Jeep Ride
- Trekking
- Kayaking

**Nature Dine Homestay**

**MM Hills | BR Hills**  
180 Km

[bangaloreouting.com](http://bangaloreouting.com)



**Weekend "ADDA"**

**BR HILLS/ SHIVANA Samudra / TALAKADU**

**Activities**

- SAFARI
- Trekking
- CAMP fire
- FISHING
- Birds- watch
- KAYAKING

**Attractions**

- Dhondallay Temple
- Kali

**Other Activities**

- Open theatre Movies
- Self Made barbeque











Invest on RB Bikes



Get into contract with  
Royal Brothers



Get paid every month



Proposed : CENTRE FOR EXCELLANCY for Colleges



## STARTUP Village

Agriculture

Tourism

Entrepreneurship





# EV Charging Business India

- Supportive GOI policies led to the exponential rise in the number of EVs
- 149% in EV sales with 49,607 units in sales in 2022.
- India would need 29,34,000 EV charging stations, creating an investment opportunity of INR 20,630 crores



Required Chargers

**29,34,000**

Investment Opportunity

**INR 20,630 Crores**

## PORTABLE EV CHARGER MARKET

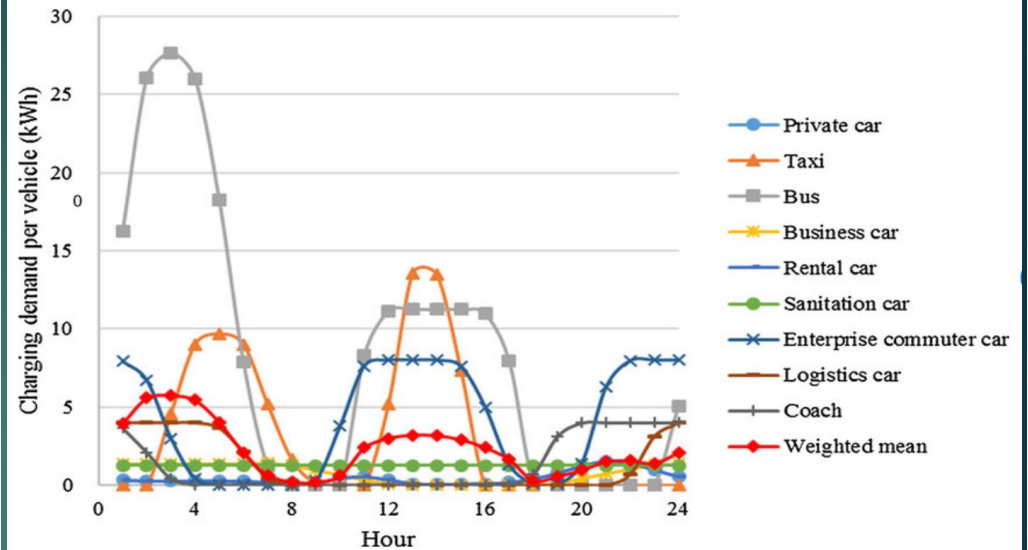
OPPORTUNITIES AND FORECAST, 2025 - 2035

Portable ev charger market is expected to reach **\$388.9 Million** in 2035

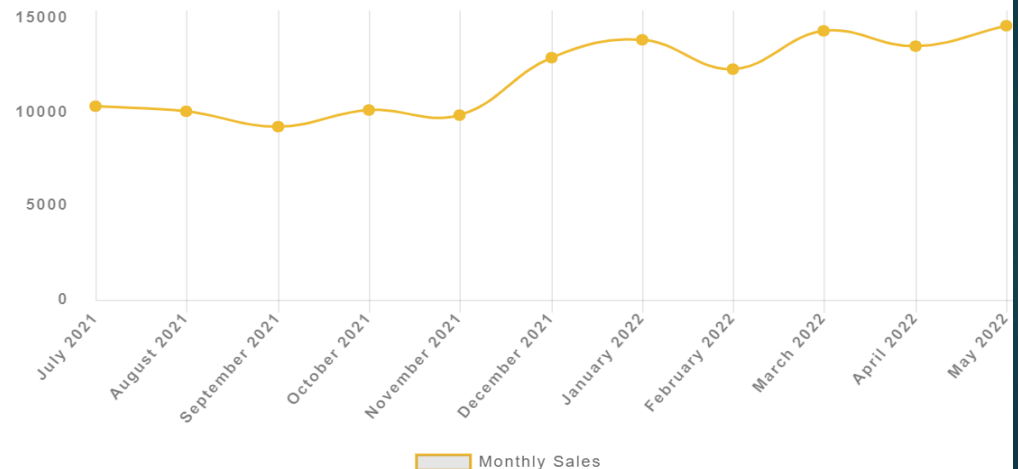
Growing at a **CAGR of 20.1%** (2026-2035)



Report Code: A47223, [www.alliedmarketresearch.com](http://www.alliedmarketresearch.com)



## Tata Nexon Monthly Sales Graph







# FAST CHARGING ON DEMAND



## SPARKCHARGE LAUNCHES A PORTABLE AND SCALABLE CHARGING UNIT TO BRING ROADSIDE ASSISTANCE PROVIDERS INTO THE EV AGE

By Charles Morris

The all-electric transport system of the future is a work in progress, to say the least. In fact, at the moment we stand near the beginning of the transition, and many aspects of the charged world to come are not yet clear. It may be that the EV ecosystem that we now foresee will prove to be just a transitional phase, analogous to the bandwidth-constrained internet of the early 2000s. Be that as it may, some of the major infrastructure components of the near-future EV ecosystem are now taking shape: Level 2 charging at home and in workplaces, DC fast charging along highways, and destination charging at places like airports, hotels and supermarkets. However, there are notable pieces missing from the puzzle, and these untapped niches in the ecosystem present opportunities for firms that can identify needs and devise solutions.

SparkCharge is based on the idea that there will be a need for portable anytime/anyplace charging on demand, and it has developed a portable, modular





# EV Consumer Club & Tour Operations:



Manu M

4d • 🌐

Nexon EV Charging costs till date....

#NexonEV #EV #EVdiaries #EVjourneys #svXPs

Charging costs	
Total cost (Rs.)	23952
Total usage (kWh)	3,369.90
Cost deduction (if any)	0.00
Total kms (km)	25,032.00
Cost per km	0.96
Unit per km	0.13
Till date	06/05/2021
Free charging cost (if rated at Rs. 25 per unit) (excluded in above calculation)	10,296.7
Cost per km Including free charge (free charging cost anticipated as Rs 25 per unit)	1.37
Cost per km (If whole charging was done from home) Rs. 8.1 per unit	1.09

## CHEAP TO RUN?



## Rent vs Lease vs Buy



**XUV500 W7**

Price: ₹17,82,775 (on road)

SUBSCRIBE (12 months)	LEASE	BUY
Total monthly fee		(with 3-year car finance interest @9.85%)
<b>Zoomcar</b> ₹48,159 Automatic	<b>M&amp;M</b> ₹41,310 (monthly rental for three years)	Down payment <b>₹5,07,775</b>
<b>Revv</b> ₹42,590 Manual (plus one-year one-time insurance of ₹78,747)		EMI <b>₹41,310</b>

In lease, the rent remains flat. Monthly rentals become cheaper on OPEN and ZAP during renewal

## Purchase EV through Our Plat form

EV - Rental Income

Cottages Investment option

Great Return for Franchisee investment

Charging Infrastructure Facility



## Revenue Model 1:

Charging : 20KW/ 30K/ 40KW (After 3 Year Company Will go IP)			
Cost	300000		
100 Unit Cost	30000000		
Upcoming year	2024	2025	2026
Week days Use in Hr	3	6	8
No Days for Weekdays	5	5	5
week days Rate Rs/hrs	150	150	100
Weekend use in hrs	6	12	14
weekends days Rate Rs/hrs	300	300	300
No of Days for Weekends	2	2	2
Per Week RS	5850	11700	12400
Per Year	304200	608400	644800
Transportation Cost	NIL	NIL	NIL
Labour Charges	NIL	NIL	NIL
Franchisee Commission	NIL	NIL	NIL
Power consumption Charges	NIL	NIL	NIL
other charges 50%	152100	304200	322400
3 year Profit /per unit			778700


Within City – Charging will Be less  
 Home Has , Default charger  
 Office , Used – Each Hr 100 Rs ( Portable )  
 Daily 500 per year 265 days . 132500/-  
 Cost 400000/- Week Days – 30% returns  
 Weekends Long travel Per day 1000/-  
 100 Days - so 25% return On weekends  
 Total 55% return on Yearly basis  
 Example Success Story : Portable petrol Bunks

### How to start ?

- Build Eco Systems( next 1 year )
- Invest on EV bike Loans / 2nds RC bikes  
12% Interest 2 % Process Fee 5 % GST
- Invest Zipto Delivery Vehicles 5 % Return Every Month
- Invest on charging Point near tourism destinations
- 2025 Invest On EV Charging
- Gvt Policies Will be Investing On Fixed Charger Points
- For Long Distance Setting up charging Points
- Offer resort membership along with Free Hrs charges



## Revenue Model 2:



**RASTYEV DEVELOPMENT PLATFORM HARDWARE**

- Controlled load and ability to remote control and reconfiguration
- Advanced metering capabilities to detect self-control service and edge security via an embedded secure element
- Mean riding accuracy, no pre-certified metering (M2)
- Cloud-based platform and customer interface with real-time communication (M2M)

Doing laundry and pay at the washing machine / dryer with a QR code

**INDIA'S LARGEST EV CHARGING NETWORK**

Get BOLT EV Charging Point now for **₹4199**

**Membership Benefits:**

- Consumer Club - 3300/-
- 15% off on Homestay Bookings
- 50% Cash back on EV bike Charging
- 50% Cash back by Amazon Voucher's
- Resort Membership -15000/-
- 15 night stay free valid for 5 Years\*

**Investment Club/ Franchise options:**

- Cottages
- EV charging stations

**3.3 KW - 2/3 wheelers** 1 Lakh  
**6KW - Cargo vehicles** 3 Lakh  
**20KW - CAR charger** 6 Lakh  
**120KW- Bus & Trucks** 15 Lakh

**20KW - CAR**  
 - High way Hotels  
 - Homestay & Resorts Packages

**3.3KW & 2 Wheeler**  
 Target Locations  
 Apartments  
 Malls  
 Parking Lots  
 Office Parking Lots

## Charging Points Collaboration with tourism:



### Bhoruka Power Corporation Limited

- Per Unit Charge Rs 4.5
- Gvt Transmission Charge Rs 1
- Bangalore City Per unit Charge Rs
- Profit Rs 1.5
- Number of Vehicle on Rd 2 Wheeler 1 Lakh & 4 Wheeler 50K
- 50000 CARS \*100 Unit \* Rs 1.5 => 75 Lakh Per Month Profit



## How to Start ?



### *gold investment*

Investors CLUB:  
15 Nights Stay FREE  
5 Years Validity  
Referral bonus



<http://bangaloreouting.in/>

#### Revenue Model for

B2C1 Ventures / Aventure Capital Services :

#### Online Cottages Inquiries :

5K	Basic to apply Bonds
15 K	Resorts membership for 5 Years (with 25 nights Complementary)
1 Lakh	Bonds Investment with 10% return ( Complementary Resorts Memberships)
5 lakh	Royal Enfield Show room Franchisee(Returnable amount)
10 Lakh	Own Cottages
20 Lakh	Own a Villa

#### Royal Enfield Camping Event

#### Reason to Join Event :

20 group size  
1500 Per person Charge  
30000 per Month Earning per Show Room

Can upgrade or resell their bikes  
Memembrships , Own a Cottages  
Bike Loan facilities

#### Own Cottages

52 number of week  
2 no of days Weekly occupancy  
5000 Charges per booking  
520000 Yearly revenue





THANKING you...



**CHENNABASAVA C**

Founder Semiconventures Pvt Ltd

[info@semiconventures.in](mailto:info@semiconventures.in)

Call us : 9008007267

<https://semiconventures.in/>

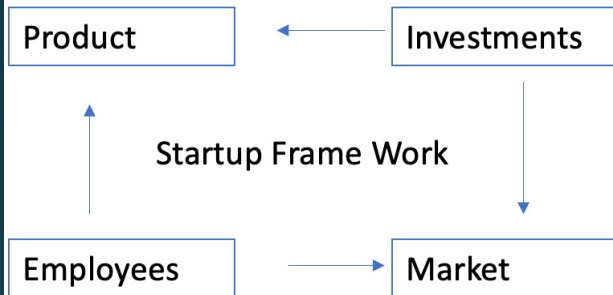
Good fortune is what happens when ***opportunity meets with planning.***

– Thomas Edison

**PROJECTMANAGER**  
[www.projectmanager.com](http://www.projectmanager.com)



1) Entrepreneurship APP/ 1 Year Course 30K FEE				charges	100000	Charge Per Collages		
Mentors Booking				30%	1000000	Monthly Revenue		
Mentor Charges -1K								
Seed Fund Rising -								
Basic Patnership -					1 Lakh	Number Of startups in India		
					1000	Mentors to On Board		
					10000	Startups to On board		
2) Co-Create Opportunities :				APP	1000	Fee Per Hrs Consulatance		
Venrurethon/Boot Camp/ Pitch Deck preparation /Industrail Connect				Revenue	2	no Consultancy Per startups		
4 Startup Mentoring per Qtr				15%	20000000	total Business per Months		
50% Seed Funding (College+ Co-Create)					24,00,00,000	Per Years Acumulated Credit		
30% Shares ( College + Co-create)					1000000	5 % App charges per monmth		
One week Workshops					2000	mentors Yrs Charges		
All India Level Competations					2000000	Revenue From Mentors		
Membership Events					1,20,00,000	Yearsly Revenue		
					2000000	Total Engineering Seats		
				Course (ENTR)	1000	Seats for ENTR course per City		
				Entreprenership	5	No Of Metropoliton City		
3) Investments					50000	FEE for Course		
3 lakh For Leads Handling					25,00,00,000			
15 lakh Colleges / Chairmens Meetings								
10 Lakh for Appdevelopment								
3 Lakh We work Office Space ( Mentors connection)				LOAN Facility /	100	Number Loans		
10 Lkash Internship Drive Cost				15% Stake	1000000	Min Loan Amount		
5 Lakh All India Competation					10,00,00,000	Total Loan amount		
10 Lkash For Google Promotions								
10 Lakh Exhibitions stalls								
					10	RC bike Out lets		
					500	Number of Inquiries Per month		
				Bikes	100	20 % Membership Conversion		
				Memembrship	1000	Total Mers Per months		
				5%	5000	Membership Charges		
					50,00,000	Total membsrhip Collection Per month		



**WHY DO COMPANIES  
ISSUE BONDS?**

visit: [www.thefixedincome.com/blog](http://www.thefixedincome.com/blog)

Get the answers  
to all your blog  
queries

**WHY?**

Tip Sheet **Fixed Income!**



#### Profits:

- 4% Margin New Bike Sales
- 8% margin Old bikes sales
- 15% (Resort Membership)
- 7% Manufacturer Margin
- Referral earning Scheme



## 1 RC bike Showroom Statistics

125 Number Sale	
500 Inquiries	
Will Launch Meberhsip Drive Events monthly Once	
500 Inquiries- Non Booked Last Months	
50 Membership	200000
1 Bike Purchase with 15 % Discounts	
40 % Down Payment	
60% Loan By Banks/ Company	
15 % Disount on GST reimbermnet after 1 year	
1 Life time Meberhsip options	

#### Product

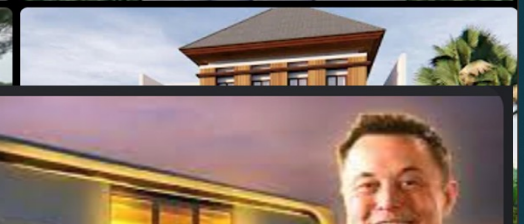
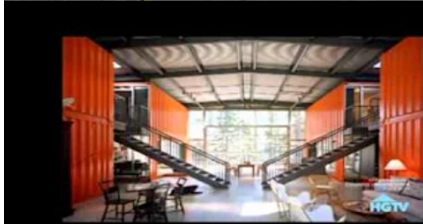
##### Primary

- Royal Enfield new Bike / Old Bike finance
- Bike Resale Expo
- Bike Subscription & Rental Option

##### Secondary

- Cottage Franchisee
- Resort Membership
- Fund rising for startups







make **my** trip | Holidays

Packages, Cruises & more...

## Future Market trend -> Segment Consolidation

We are Preparing to have Consolidated business  
From the Big Giants , Building new Ecosystem

In the single Platform

Spinny – 3000 CR

Zoom -200 Cr

MakeMyTrip – 2B USD

Spinny Customer Pain Point

-14 % interested rate for Second hand Loans

-CARS are un-used in the Spinny Were house

Our Service Model

-Second Hand CAR will provided on rental basis

-with Well connected resort facility across Karnataka

-Owners also get Entry Free membership option

**Where to Start** ->> Cottages / Prefab house

To connect Investors & Property Owner





## FAST CHARGING ON DEMAND

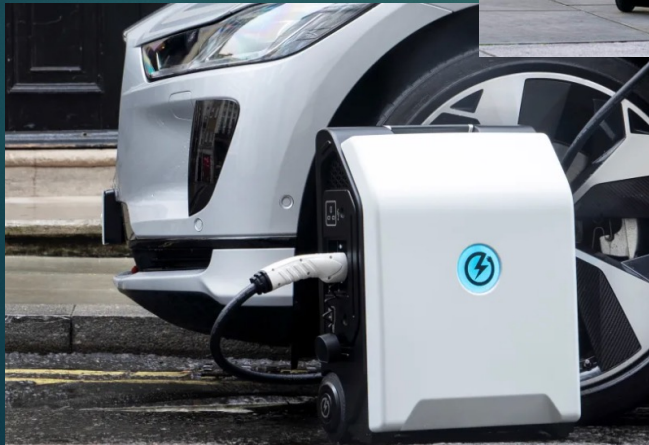


### SPARKCHARGE LAUNCHES A PORTABLE AND SCALABLE CHARGING UNIT TO BRING ROADSIDE ASSISTANCE PROVIDERS INTO THE EV AGE

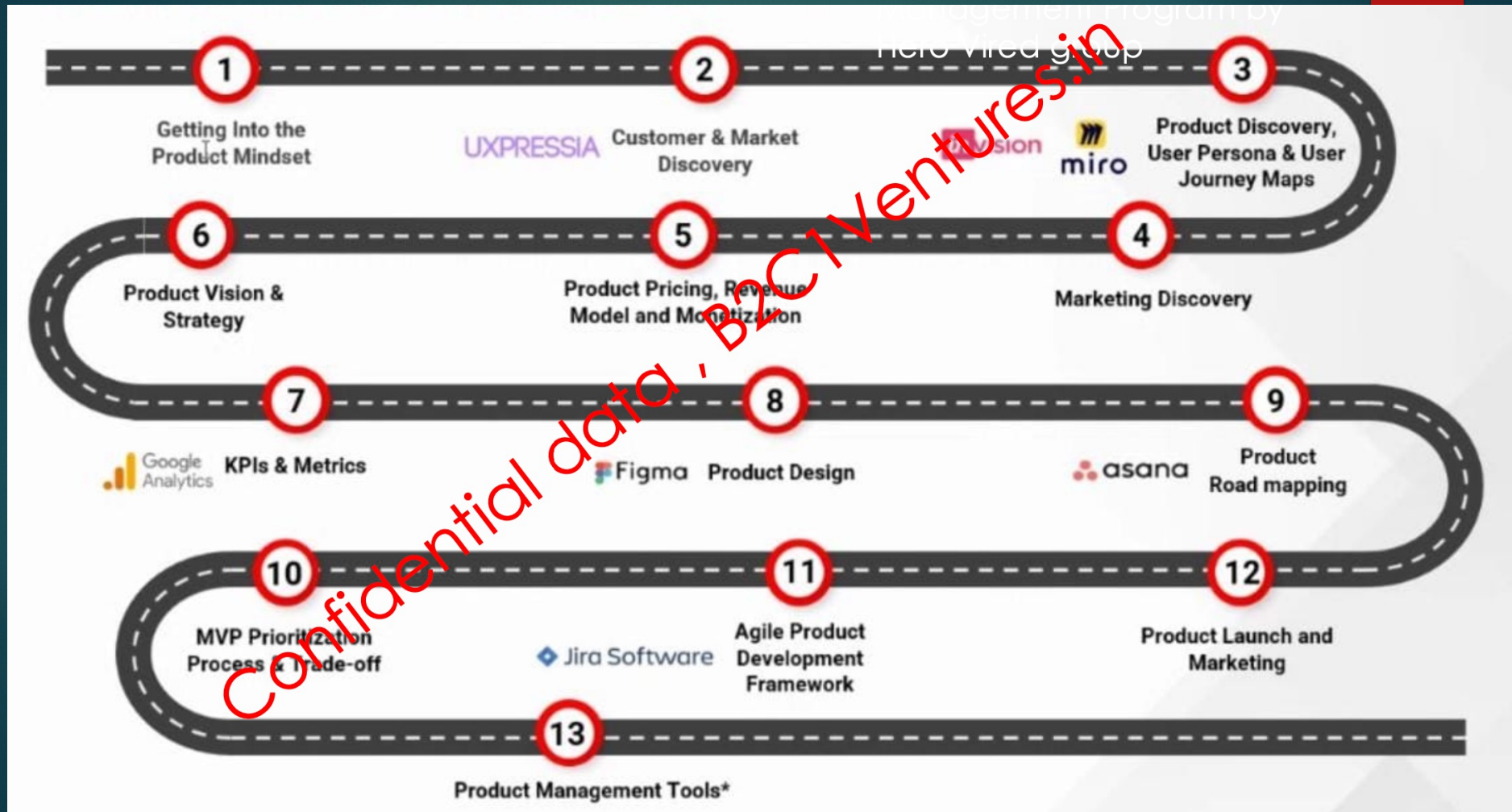
By Charles Morris

The all-electric transport system of the future is a work in progress, to say the least. In fact, at the moment we stand near the beginning of the transition, and many aspects of the charged world to come are not yet clear. It may be that the EV ecosystem that we now foresee will prove to be just a transitional phase, analogous to the bandwidth-constrained internet of the early 2000s. Be that as it may, some of the major infrastructure components of the near-future EV ecosystem are now taking shape: Level 2 charging at home and in workplaces, DC fast charging along highways, and destination charging at places like airports, hotels and supermarkets. However, there are notable pieces missing from the puzzle, and these untapped niches in the ecosystem present opportunities for firms that can identify needs and devise solutions.

SparkCharge is based on the idea that there will be a need for portable anytime/anyplace charging on demand, and it has developed a portable, modular



## 90 Days Game Plan for Rapid Prototyping Program Module:





External Incubation Plan: Startup cycle plan:  
Our Plan is 2 batch from each department :

Time Lines	Program	Levels	Fee in Rs	
			Students	Other's
2 WEEKENDS	BOOT CAMP	Level-1	2000	3500
4 WEEKENDS	MARKET SEGMENTATIONS / BUIDLING MVP/ Customer Discovery program	Level-2	2500	4000
2 WEEKENDS	PITCHDECK WORKSHOP	Level-3	3500	5000
1's in every Month	INDUSTRIAL CONNECT / NETWORKING	Level-4	250	500
1's in 3 month	SEED FUNDING « PRODUCT SHOW CASE EVENTS	Level-5	5000	10000
3 MONTHS WEEKEND	90 DAYS ACCELERATION WORKSHOP OUR STRENGHT« LARGEST STARTUP COMMUNITY N/W & WITH 12 INTERSHIP MODULE APPROCHS	Level-6	15000	35000

## STARTUP BOOT CAMP @BMSIT On WEEKENDS

Are you ready to embark on an exhilarating entrepreneurial journey?

Join the Startup Boot Camp at BMSIT College and unlock the secrets to startup success!

### Why Attend?



1 Transform Ideas into Reality



4 Networking Opportunities



2 Learn from the Industry Experts



5 Pitch for Funding



3 Customer Discovery Program



for registrations & enquiries  
**+91 90080 07267**



## Potential Projects Under My Guidance in progress are :

Entreprenership app	Smart Apps	Chennabasava C	Phase 1 Completed
Mentor Consultancy		Arham	
Law app / Legal Consulta		Lokesh , Pritwi, Sumukha	
Smart Switch	IOT, Charger	VedhaShree	Schematic Design Lead Generation
EVCharghing Station		Shankar	
Washing Machine Renta		Harinath, Chennabaava	
logistic ,	E-Commerce	Gaurav	2 Years project initial Plan
Mohtly Offers		Drone Club	
Drone Dilivery		Chennabasava C	
Desi Soft Drinks	Foodtech	Shankar,	Market Research
instant Food		Vikash,	
Vending mechine		chennabasava C	
Portable Cottages	Tourism	Suhash	Lead generation
Crowd Funding Models		Chennabasava C	
Prefab House			
B2C1 Venture Capital	Investment /Funding / App	Chennabasava C	Under Plan
Cottages			
CAR Rentals			



THANKING you

BE A PART NEXT EV REVALUTIONS

To Signup our Franchisee Business,  
Kindly contact US  
9008007267

Good fortune is what  
happens when  
***opportunity meets with  
planning.***

– Thomas Edison

**PROJECTMANAGER**

[www.projectmanager.com](http://www.projectmanager.com)

# FUELING THE FUTURE

Starting Your Own  
EV Charging  
Station Business

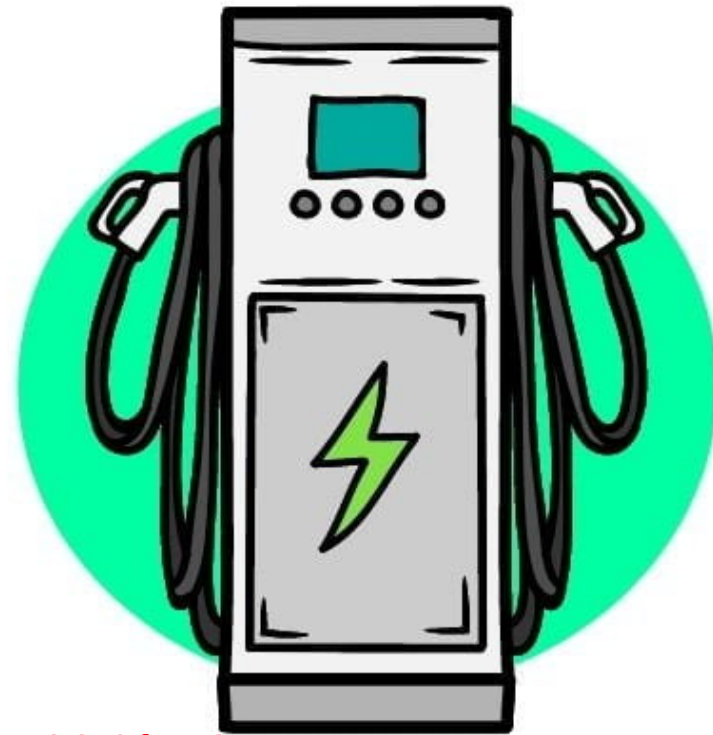


**FRANCHISEE Starts From 5 Lakh up to 20 % ROI**



# EV Charging Business India

- Supportive GOI policies led to the exponential rise in the number of EVs
- 149% in EV sales with 49,607 units in sales in 2022.
- India would need 29,34,000 EV charging stations, creating an investment opportunity of INR 20,630 crores



**FRANCHISEE Starts From 5 Lakh up to 20 % ROI**

Required Chargers

**29,34,000**

Investment Opportunity

**INR 20,630 Crores**

# EV CHARGING STATIONS

Business Opportunities in India

FRANCHISEE Starts From 5 Lakh up to 20 % ROI





FRANCHISEE Starts From 5 Lakh up to 20 % ROI

# ***EV CHARGING BUSINESS INDIA***

## ***REVENUE MODEL***



**EV CHARGING Station  
BUSINESS OPPORTUNITIES  
FRANCHISEE @ 5 Lakh**







# INCUBATION CENTRES FOR UNIVERSITIES

# Our Proposed Advisory Board:



**Prashanth Prakash** · 2nd  
Partner at Accel

Bengaluru, Karnataka, India · [Contact](#)



**Tarun Mehta** · 3rd  
Co-founder & CEO at Athe

Bengaluru, Karnataka, India · [Contact](#)



**Rajith Lad**  
Strategic Investor



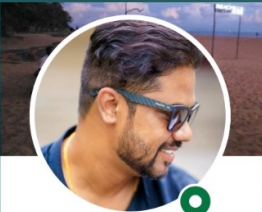
**Vinay Manjunath** · 2nd  
Marketing Director at SM Ele

Bengaluru, Karnataka, India · [Contact](#)



**Gp Ravindranath** · 2nd  
Director Business Developm

Bengaluru, Karnataka, India · [Contact](#)



**Nikhil Das** (He/Him) · 1st  
CONSULTANT | FUND RA  
ACQUISITIONS. A Resour

Built India's First and Largest



**Srikanth K Avadhani**  
Co-Founder & CEO, Rayvector  
Banking@ RGEM STOCKS.



**DL Manjunath**  
mentor



**Mohan Shamanna**  
Founder, Director & CEO @I

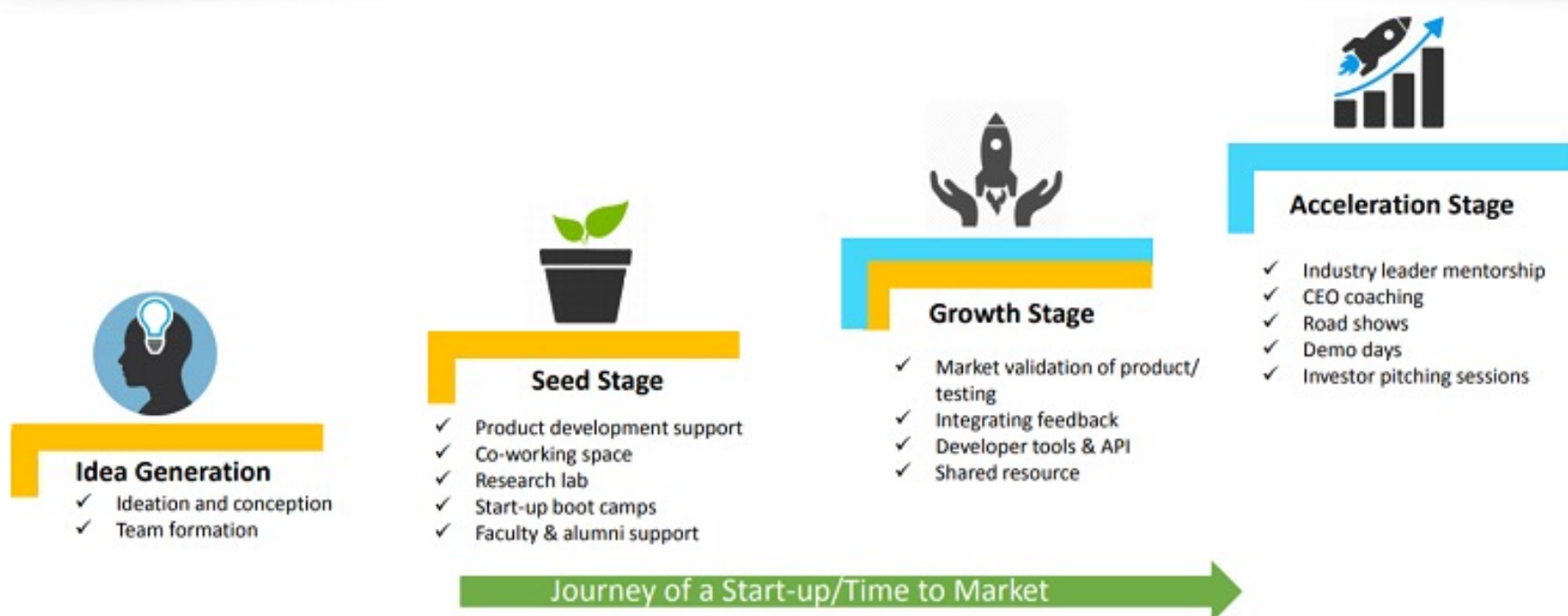
Bengaluru, Karnataka, India · [Contact](#)



**Chennabasava C**  
CEO -B2C1 Ventures



## START-UP LIFECYCLE - While incubators provide support across the life cycle, accelerators are more focussed on 'Growth & Acceleration' stage



**Incubator** Typical duration: 6-36 months

**Accelerator** Typical duration: 3-12 months



Startup Cycle Programs : for Universities		
Launch Competition based On the Market Segments	2 months	
Research marketing		
Market Segmentation		
Nurture the IDEA/ Idea Validation	1 month	
Define Marketing Strategy		
pitch deck preparations	2 months	
Mentor Specilist allocation		
Preparing for GVT Competations		
Seed funds	3 Months	
Prepare for the VC funds		
Participate external Events		

### Pre Incubation Time Schedules :

Its concluded and Agreed upon all team members , any project will have to go through minimum 8 months Pre incubation nurturing period and Only 6 to 8 Projects can be taken effectively for Preincubation by the incubation manager, How ever other 20 to 30 projects can be taken under the guidance of the section heads or any other faculty Mentorship

Starup- Incubation Event Modules			
Program Breakups			
Time Lines	Program	Levels	
2 WEEKENDS	BOOT CAMP	Level-1	
4 WEEKENDS	MARKET SEGMENTATIONS / BUIDLING MVP/ Customer Discovery program	Level-2	
2 WEEKENDS	PITCHDECK WORKSHOP	Level-3	
1's in every Month	INDUSTRIAL CONNECT / NETWORKING	Level-4	
1's in 3 month	SEED FUNDING « PRODUCT SHOW CASE EVENTS	Level-5	
3 MONTHS WEEKEND	90 DAYS ACCELERATION WORKSHOP OUR STRENGHT« LARGEST STARTUP COMMUNITY N/W & WITH 12 INTERSHIP MODULE APPROCHS	Level-6	



External Incubation Plan: Startup cycle plan:  
Our Plan is 2 batch from each department :

Time Lines	Program	Levels	Fee in Rs	
			Students	Other's
2 WEEKENDS	BOOT CAMP	Level-1	2000	3500
4 WEEKENDS	MARKET SEGMENTATIONS / BUIDLING MVP/ Customer Discovery program	Level-2	2500	4000
2 WEEKENDS	PITCHDECK WORKSHOP	Level-3	3500	5000
1's in every Month	INDUSTRIAL CONNECT / NETWORKING	Level-4	250	500
1's in 3 month	SEED FUNDING « PRODUCT SHOW CASE EVENTS	Level-5	5000	10000
3 MONTHS WEEKEND	90 DAYS ACCELERATION WORKSHOP OUR STRENGHT« LARGEST STARTUP COMMUNITY N/W & WITH 12 INTERSHIP MODULE APPROCHS	Level-6	15000	35000

## STARTUP BOOT CAMP @BMSIT On WEEKENDS

Are you ready to embark on an exhilarating entrepreneurial journey?

Join the Startup Boot Camp at BMSIT College and unlock the secrets to startup success!

### Why Attend?



Transform Ideas into Reality



Learn from the Industry Experts



Customer Discovery Program



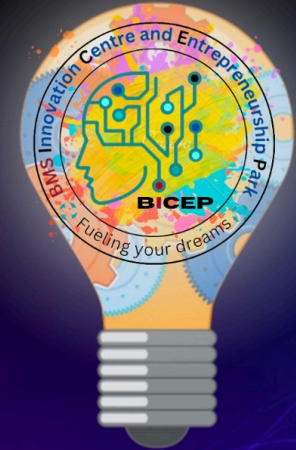
Networking Opportunities



Pitch for Funding



for registrations & enquiries  
**+91 90080 07267**



## Potential Projects Under My Guidance in progress are :

Entreprenership app	Smart Apps	Chennabasava C	Phase 1 Completed
Mentor Consultancy		Arham	
Law app / Legal Consulta		Lokesh , Pritwi, Sumukha	
Smart Switch	IOT, Charger	VedhaShree	Schematic Design
EVCharging Station		Shankar	
Washing Machine Renta		Harinath, Chennabaava	Lead Generation
logistic ,	E-Commerce	Gaurav	2 Years project initial Plan
Mohtly Offers		Drone Club	
Drone Dilivery		Chennabasava C	
Desi Soft Drinks	Foodtech	Shankar,	Market Research
instant Food		Vikash,	
Vending mechine		chennabasava C	
Portable Cottages	Tourism	Suhash	Lead generation
Crowd Funding Models		Chennabasava C	
Prefab House			
B2C1 Venture Capital	Investment /Funding / App	Chennabasava C	Under Plan
Cottages			
CAR Rentals			

## PBL Potential Project Selected for Pre Incubation :

- 1) Low cost Smart Ventilation Machine
- 2)Smart Parking Models
- 3) Airticket Low cost Routing & Booking
- 4) face Emotion Detection
- 5) Doctor Consultation booking

## 3 Month Out Comes:

- 1) Active Start up Community - 60 People
- 2) Decathlon Internship - 100 People
- 3) Entrepreneurship App
- 4) Global Start up Club team Associations



# Immediate Preincubation:

## 1)EV Charging Station

**EV CHARGING STATION HARDWARE**

- Control unit and charging cable
- Substation connection to power grid
- Control system and edge security via cloud-based secure network
- Mobile app for payment (QR code)
- Cloud-based monitoring and control system

Doing laundry and dry in the washing machine / dryer with a QR code

**INDIA'S LARGEST EV CHARGING NETWORK**

Get BOLT EV Charging Point now for **₹4199**

**Membership Benefits:**

- Consumer Club - ₹1200/-
- 15% off on Homestay Bookings
- 50% Cash back on EV bike Charging
- 50% Cash back by Amazon Voucher's
- Resort Membership - ₹15000/-
- 15 night stay Free valid for 5 years\*
- Investment Club/ franchise option
- Cottages
- EV charging Stations

**Order Now**

3.3 KW - 2/3 wheelers	1 Lakh
6KW - Cargo vehicles	3 Lakh
20KW - CAR charger	6 Lakh
120KW- Bus & Trucks	15 Lakh

20KW - CAR  
- High way Hotels  
- Homestay & Resorts Packages

3.3KW & 2 Wheeler

Target Locations  
- Apartments  
- Malls  
- Parking Lots  
- Office Parking Lots

## 2)Prefab house:



## 3) Indian Soft Drinks :

### TAKE A GLIMPSE OF OUR FLAOURS...



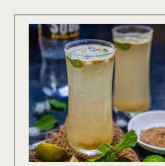
**NANNARI SODA**

Nannari soda is a herbal carbonated soft drink made from the root extract of the nannari plant. Nannari is a plant found in South Asia with aromatic roots. The juice of the Nannari root can be added to soda to make a fizzy drink. It slips through your tongue as nectar.



**KOKUM SODA**

Kokum soda is a naturally cooling summer beverage that's said to have medicinal properties. It's made with kokum, roasted cumin powder, black salt, ice cubes, soda, and mint leaves. Kokum soda is said to aid digestion, help prevent inflammation, and fight dehydration. Experience the two odds of salt & sweet in a same glass at the same time.

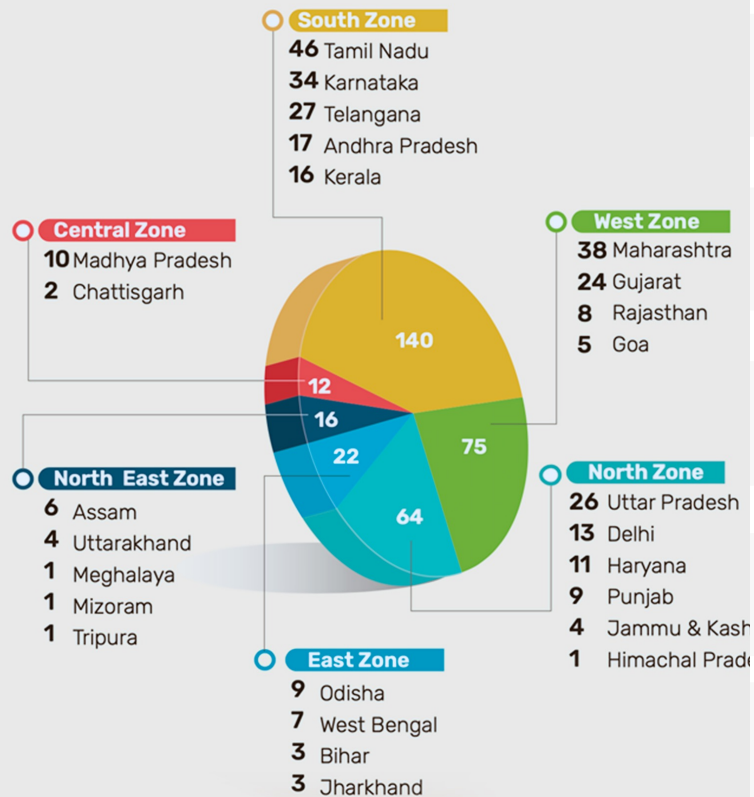


**SHIKANJI**

Shikanji is a lemon-based drink that originated in northern India. It is a popular summer drink in India and Pakistan. Shikanji is different from lemonade and often contains other ingredients such as salt, saffron, and cumin. This flavor mesmerizes you with a twist and turn of spicy, sour & sweet taste

# Startup Incubators In India

## Geographic Spread



South Incubation Centre – 140 +

## \$5 Trillion Opportunity by 2025

\$300 B Auto	\$200 B Auto Comp	\$25 B Aviation	\$100 B Biotech	\$350 B IT/BPM
\$65 B Pharma	\$304 B Chemicals	\$640 B Construction	\$130 B Defence	\$30 B Leather
\$180 B Renewables	\$285 B Roads	\$400 B Electronics	\$535 B Food Processing	\$123 B Ports
\$223 B Textiles	\$125 B Thermal Power	\$424 B Tourism	\$100 B Media	\$9 B Wellness
\$150 B Mining	\$110 B Oil & Gas	\$112 B Capital Goods	\$192 B Railways	

Source: Shifting Orbits: Decoding the Trajectory of the Indian Start-up Ecosystem

Bloomberg | Quint



# Monthly Engagement:

1 St Month Meeting :	Projects :
Nikhil Das	Joint Consultance Service
GSS EMS facility	Cowrking Space Tieup Programs
Aswin - Execom Solutions	E-Cycle Production Plans
Rangaraj - Ola Designer	Crowd Fund Rising
2 Nd Months	
Industrial Connect Program	Created Startup Community
Startup Global Club	Logo Competetion Designed
E Chai venture Meet	Linkedin Promotions stratergy created
	Smart Switch & Portable Cabin Projects are created
3 rd Month	
	Pre Incubations :
HOD meetings	Dost Bin : Finanancila Model Created & ECU development Support
Startup Cycle Creations	DELOI : Market Launching Support under finalization
Internship Model Created	Sai niranja( Online Silk Sarees ): App and Marekting Startergy Build
Entrepreneurship App developed	BUGUSK : Explored secondary Markets
	Navi Marchantized - Online Course Solutions building under Preincubation Discussion
	Instant Food -> Special Drinks & Food market research under preincubations Discussion
	4 pbl project is selected for pre incubation

### Suggestion & Initiations taken:

- 1) Setup Own External Advisory Board for Smooth operation and Industrial Connection
- 2) To Initiate Start-up Cycle Programs to nurturing Plans & Different Start-up Level Course / Training Programs Created
- 3) Venturethon and Preincubation Nurturing Time Schedule preparation Program Plans
- 4) Launching Venturethon Competition / Inter college Competitions
- 5) Initiated Industrial Connect Linked Promotion Plan to Onboard External Applications

Segments:									
Deep Technology		Electronics & Chips		Agriculture		Industrial			
8 Months Module for 1 st Sem students									
1	Reasearch & Development	2	Marketing	3	Funding Events	4	Technology	Supporting Team	
1) Scope of Segments		1) Buiness developments		1) 80 G and 12 A		1) Web Development		1) Photography and Video	
2) 5 Years Trends		2) Event Creations or Competation Approch		2) Crowd Funding		2) Android / IOS		2) Event Coordinatores	
3)Upcoming Events design		3)Online Tool & Social Media		3) Placement cell Corporate A		3) Embedded		3) Section Coordinators	
4) IIT Connect		4) Internship Team		4) TV Show & Big Events		4)Cloud		Others execution Team	
WORK FLOW								1) Network Building	



## Potential Projects Under My Guidance in progress are :


Entrepreneurship app	Smart Apps	Chennabasava C	Phase 1 Completed
Mentor Consultancy		Arham	
Law app / Legal Consultancy		Lokesh , Pritwi, Sumukha	
Smart Switch	IOT, Charger	VedhaShree	Schematic Design
EVCharging Station		Shankar	
Washing Machine Rental		Harinath, Chennabaava	Lead Generation
logistic ,	E-Commerce	Gaurav	2 Years project initial Plan
Mohtly Offers		Drone Club	
Drone Delivery		Chennabasava C	
Desi Soft Drinks	Foodtech	Shankar,	Market Research
instant Food		Vikash,	
Vending machine		chennabasava C	
Portable Cottages	Tourism	Suhash	Lead generation
Crowd Funding Models		Chennabasava C	
Prefab House			
B2C1 Venture Capital	Investment /Funding / App	Chennabasava C	Under Plan
Cottages			
CAR Rentals			

### PBL Potential Project Selected for Pre Incubation :

- 1) Low cost Smart Ventilation Machine
- 2) Smart Parking Models
- 3) Airticket Low cost Routing & Booking
- 4) face Emotion Detection
- 5) Doctor Consultation booking

### 3 Month Out Comes:

- 1) Active Start up Community - 60 People
- 2) Decathlon Internship - 100 People
- 3) Entrepreneurship App
- 4) Global Start up Club team Associations

Products	BICEP Internship : Socials,Innovations and Entrepreneurship						
Agritech Park / weekend Farming Club / Decathlon events							
School - ERP Solutions & Advnture Tours Survey							
Entreprenership Apps survey & Startup Connect programs							
There are 10 Decathlon Out lets :				10*10			
							
	Monday	Tuesday	Wednsday	Thursday	Friday	Saturday	Sunday
	Day 1	Day2	Day 3	Day 4	Day 5	Day 6	Day 7
Week 1	1) Introduction of Subject and Team finalisations 2) Problem Statement analysys 3)Market Segmentations and Business opportunity finding 4)NGO formation model					OFFLINE surevey @ Decathlon Venue	
week 2	Online /Offline Survey report generations : School, Colleges, Corporate offices , Appartmetns , Tech Parks					Rural Village visit and Problem statement Analysys / Rural Visit is Optional with paid additional Charges	
week 3	Online / Offline Survey report generations : School, Colleges, Corporate offices , Appartmetns , Tech parks					OFFLINE surevey @ Decathlon Venue	
Week 4	1) Technology Building : Website Building , App development , Big Basket Data Analysys, Whats app market tool Building					ool Events Creation @ Decathlon Ver	





# Inter College Competition Plans:

## Anveshana Prototype Competition : 2023-24

### Intercollege Innovation Competition

Target Number of Institutes	30
Number of Proposals per Institute (Best of their Choice)	4
Total Expected Proposals	120

### Budget Requirement

Perticulars	Amount
Technical Requirements - Website and Apps	50000
Promotion, Printing and Travel	50000
Round 1-Evaluation of Proposal @ Rs 500/Proposal (1st Week of December 2023)	60000
Round 2 - Evaluation through Pitching 2 days, 30 Shortlisted Proposals, 5 Experts @ Rs 5000/day (1st Week of January 2024)	50000
Take away gifts, Food and Refreshment	30000
Price money	100000
Missellaneous	10000
<b>Total Budget</b>	<b>350000</b>



### Time Line

Survey / Promotions	October 25 to November 25
Round 1	Proposal Evaluation
	December 1 to December 30
Round 2	Pitday Evaluation
	Jan 2nd Week

**\*\*FREE** Camping Zone's  
@ BR hills  
MM hills  
Bandipure

**PUG  
MARKS  
RIDER  
CLUB**



A journey in Wild life



## LOOKING for NEW BIKE ?

- SPECIAL Rider Membership
- FREE Camping facilities
- OFF Rd Track Training
- GET UPTO 15 % GST Discount
- EASY LOAN & Flexible EMI Facilities





# LOOKING for NEW BIKE?

- SPECIAL Rider Membership
- FREE Camping facilities
- OFF Rd Track Training
- GET UPTO 15 % GST Discount
- EASY LOAN & Flexible EMI Facilities





# Our Proposed Advisory Board:



**Prashanth Prakash** · 2nd  
Partner at Accel  
Bengaluru, Karnataka, India · [Contact](#)



**Tarun Mehta** · 3rd  
Co-founder & CEO at Athe  
Bengaluru, Karnataka, India ·



**Rajith Lad**  
Strategic Investor



**Vinay Manjunath** · 2nd  
Marketing Director at SM Ele  
Bengaluru, Karnataka, India · [Contact](#)



**Gp Ravindranath** · 2nd  
Director Business Developm  
Bengaluru, Karnataka, India · [Contact](#)



**Nikhil Das** (He/Him) · 1st  
CONSULTANT | FUND RA  
ACQUISITIONS. A Resour  
Built India's First and



**Srikanth K Avadhani**  
Co-Founder & CEO, Rayvector  
Banking@ RGEM STOCKS.



**DL Manjunath**  
mentor



**Mohan Shamanna**  
Founder, Director & CEO @I  
Bengaluru, Karnataka, India · [Contact](#)



**Chennabasava C**  
CEO -B2C1 Ventures



## Collaborations Models:

( SM Electronics + New Section 8 Company for Incubation)

- 1- Offering Design, Procurement & EMS consultant for the startup Companies along with Funding through Venture Capitalist for startups (or) Section 8 Companies
2. EV design Competition and racing Events Below are Segments  
Quad Bike / Dirt Bike / Off Rd Cycles
3. All India electronics / Semiconductor Innovation Design Proto type Competitions  
( For Colleges and Non Colleges as well )
4. EV Charging Stations and Socket business fund rising through bonds
5. Bike Clubs : membership / Bike resale & Loans / New Bike Subscription Business
6. Trader WhatsApp group Over – Specific to Bangalore and World level 1K number group
7. Other Business , Agri-pumps started Subscription model & Billing Machine Subscription Model