



LISBON TRAVEL GUIDE

Curated for Guests of


Alfama
← Right Point →



Introduction

Lisbon is a city of golden sunlight, tiled facades, and hidden courtyards.

This guide — exclusively for **Alfama**

Right Point guests — combines iconic landmarks with local secrets, all within easy reach of your stay.

We've included:



Walking times from the Hotel



2025 updates



Local hacks and valuable tips



Hidden gems beyond the tourist trail

Index

1. ALFAMA & MOURARIA

2. BAIXA & CHIADO

3. BELÉM

4. PARQUE DAS NAÇÕES

5. ESTRELA & MARQUÊS DE POMBAL

6. DAY TRIPS

(Sintra, Cascais, Setúbal, Fátima)

7. MAP & LINKS



Don't miss out! Follow us for more tips: **@alfamarp**

Alfama & Mouraria



Lisbon's oldest district — a labyrinth of cobbled streets, fado echoes, and sunset miradouros. Attractions in this section are all within 5-20 mins' walk from Alfama Right Point.

Miradouro de Santa Luzia

One of the best views of Lisbon. Below, the labyrinth of the picturesque Alfama neighborhood and the immense Tagus estuary. The setting includes a cheerful garden area, tile panels, a reflecting pool, and several terraces.

Local tip: Go at 6 PM for golden light.



Castelo de São Jorge

A Moorish fortress with panoramic views over Lisbon. The resident peacocks are descendants of gifts from 16th-century explorers.

Local tip: ask for the new augmented reality tour of the archaeological site



Don't miss out! Follow us for more tips: [@alfamarp](#)

Alfama & Mouraria



Museu do Fado

An immersive dive into Portugal's soulful musical tradition. (ask ticket with audio guide included). Don't miss: The interactive fado karaoke exhibit.

Miradouro das Portas do Sol

The best sunset spot in Alfama, with a view of the Tagus River. Hidden gem: The nearby Santo António da Sé chapel (free entry) has 18th-century azulejos rarely visited by tourists.



Don't miss out! Follow us for more tips: [@alfamarp](#)

Alfama & Mouraria

Catedral da Sé

Sé was built back in 1147 and therefore remains the oldest church in all of Lisbon. It was renovated many times to keep it strong
Inside tip: the famous cross of Saint Anthony is on the wall of the staircase leading to the choir



Feira da Ladra

Lisbon's iconic Flea Market (Tuesdays & Saturdays).

Local hack: Vendors at the top of the hill (near Campo de Santa Clara) sell vintage treasures; the lower section is mostly tourist trinkets.



Don't miss out! Follow us for more tips: [@alfamarp](#)

Baixa & Chiado



Elegant squares, historic cafés, and Lisbon's post-earthquake grandeur. From Alfama Right Point: 15-min walk or Tram 28 (alight at "Baixa-Chiado").

Praça do Comércio

The majestic riverside square where Lisbon greets the Tagus and the world. Once the main gateway for explorers and traders, it's now a vibrant hub for culture and leisure. Enjoy a coffee under the grand arcades, or simply soak in the panoramic views.



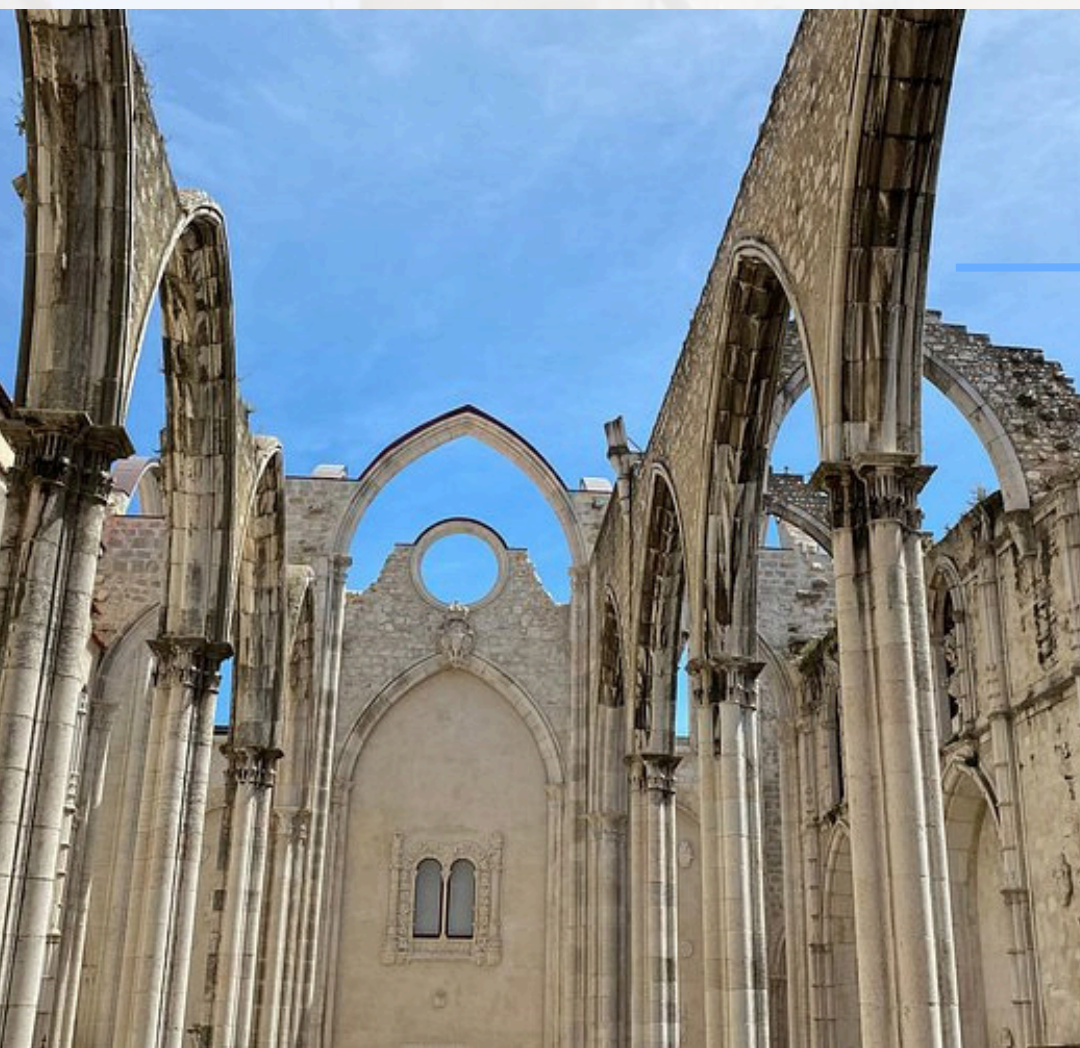
Rua Augusta

Iconic pedestrian street in central Lisbon, connecting Praça do Comércio to Rossio and famous for its shops, restaurants, and street performers. Photo tip: be sure to photograph the astonishing Arch from different angles.



Don't miss out! Follow us for more tips: [@alfamarp](#)

Baixa & Chiado



Convento do Carmo

Striking Gothic ruins open to the sky. The Carmo Archaeological Museum is housed in the ruins of the old Carmo Church

Photography tip: The arches frame perfect shots of Castelo de São Jorge.

Time Out Market

This 40+ food stalls under one roof has top restaurants, bars, and a high-end music venue. Here, you can find some of the freshest fish, meat and fruit in town. Time tip: Avoid peak lunch hours



Don't miss out! Follow us for more tips: [@alfamarp](#)

Baixa & Chiado

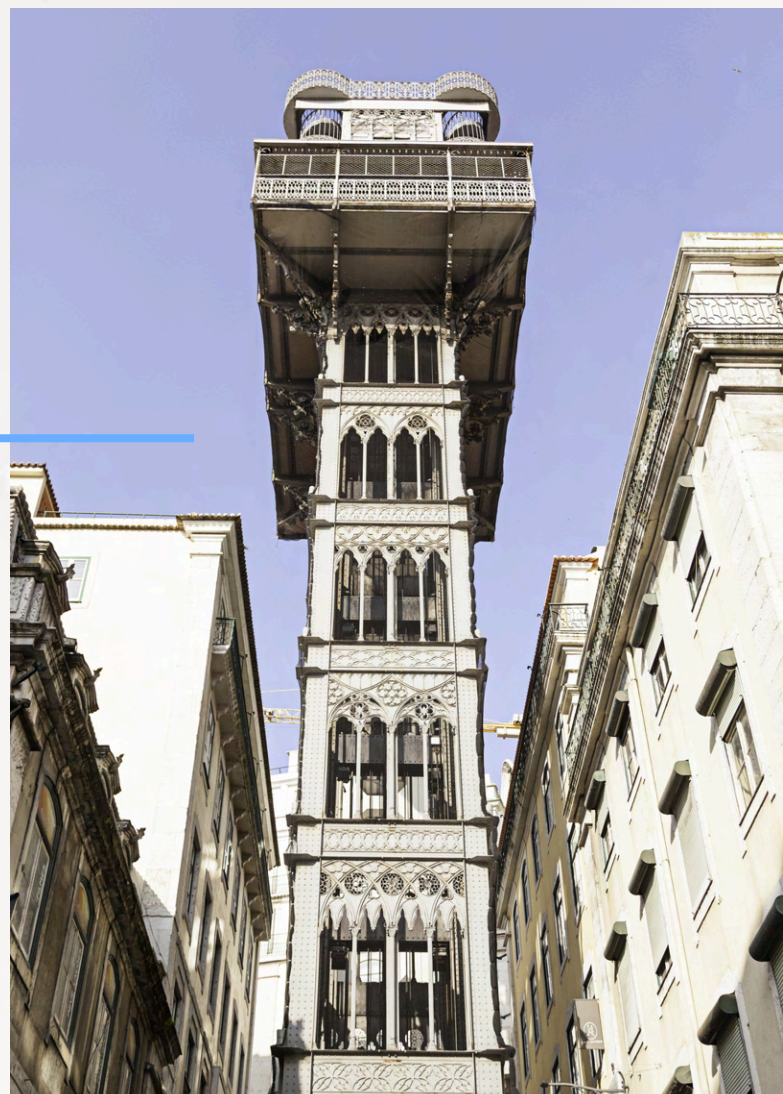


Rossio

A lively place at any time of the day where people stop to relax, or for a drink at the several atmospheric cafés. Shop tip: O Mundo Fantástico da Sardenha Portuguesa is a worth visiting stop

Elevador Santa Justa

This is one of the most famous historical monuments in downtown Lisbon. It's worth climbing this neo-Gothic structure and feeling a thrill of excitement at the landscape that stretches before your eyes.



Don't miss out! Follow us for more tips: [@alfamarp](#)

Belém



Located along the banks of the Tagus Estuary, it is home to many of Lisbon's most iconic tourist attractions, as well as its squares and gardens that invite pleasant strolls.

Torre de Belém

One of Lisbon's most striking monuments, this 6th-century tower serves as a live memory to Portugal's Age of Discovery on both land and sea. Please note: check before visiting, as it will be closed for renovations.



Mosteiro dos Jerónimos

It is one of the most prominent examples of the late Portuguese Gothic Manueline style of architecture in Lisbon, erected in the early 1500s near the launch point of Vasco da Gama's first journey. Save-time tip: book online to reduce queue time



Don't miss out! Follow us for more tips: [@alfamarp](#)

Belém



Pastel de Belém

The home of the original 'pastel de nata' since 1837. Follow the scent of cinnamon to this iconic bakery and taste the secret-recipe custard tart, still baked in the original ovens. A sweet Lisbon ritual.

Padrão dos Descobrimentos

A monumental tribute to Portugal's Age of Discoveries. Ascend to the rooftop viewpoint for a stunning 360° panorama, perfectly framing the Rosa dos Ventos marble compass below.



Museu dos Coches

A world-class collection of historical carriages. Marvel at the breathtaking opulence of 17th to 19th-century royal vehicles, from ornate Baroque coaches to elegant phaetons, uniquely preserved.



Don't miss out! Follow us for more tips: [@alfamarp](#)

Parque das Nações



A redeveloped area along the Tagus River. Green parks with public art serve as a link between impressive buildings and the grand Lisbon Oceanarium.

Oceanário

Considered one of the best aquariums in the world.

Discover marine habitats and fascinating species: rays, coral reefs, sharks, penguins, and sea otters. An experience not to be missed...



Vasco da Gama Tower BABYLON 360°

Panoramic view from the tallest building in Portugal Viewpoint at 145m high Rooftop Bar BABYLON 360° DJ & Live Music Open every day.



Don't miss out! Follow us for more tips: [@alfamarp](#)

Parque das Nações



Telecabine Lisboa

The Lisbon Cable Car ride takes no more than a few minutes, and from the top of the cabin, you can admire an aerial view of the harbour & the Lisbon's landmark of Vasco de Gama bridge. Discount tip: look for packages with cable car and Oceanário

Pavilhão do Conhecimento

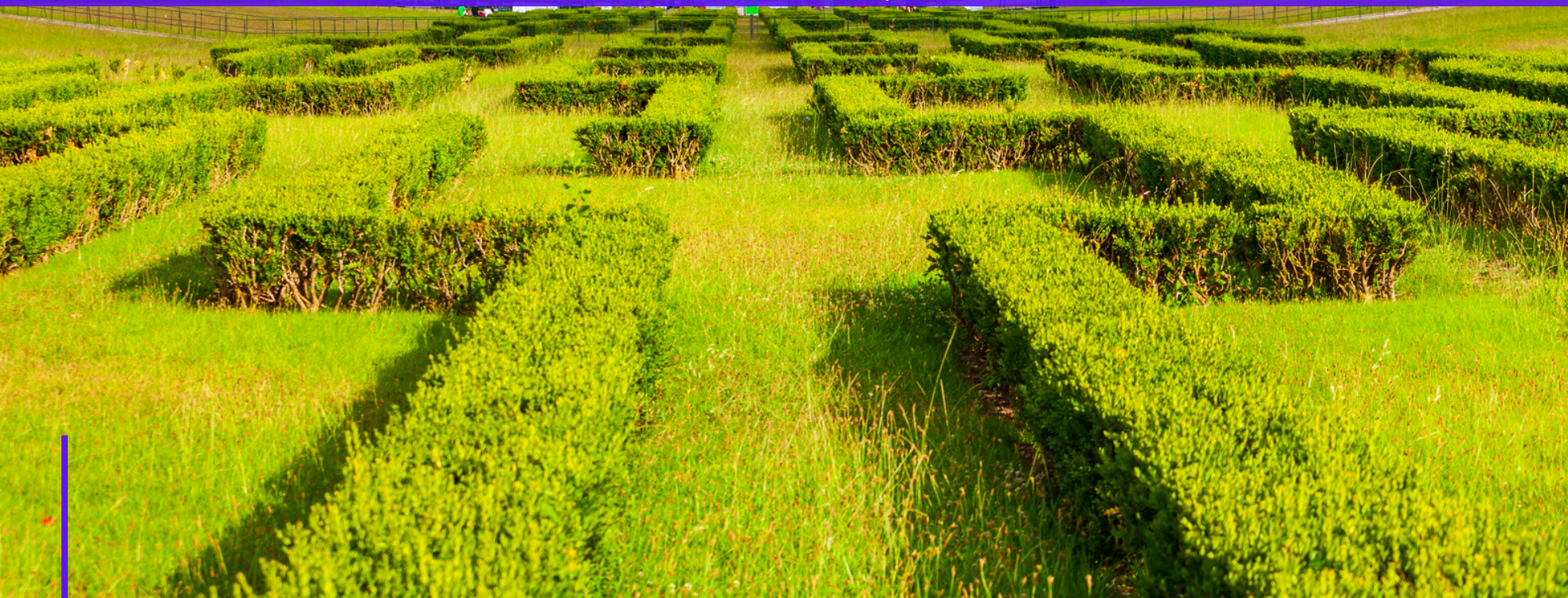
An interactive science and technology museum, it seeks to stimulate scientific knowledge and literacy among all citizens. For children of all ages.



Don't miss out! Follow us for more tips: [@alfamarp](#)



Estrela • Mg. Pombal



This areas offer a serene escape into manicured gardens, world-class art museums, a stunning basilica (Estrela), and a park at the end of Av. Liberdade (Marquês do Pombal).

Parque Eduardo VII

Located behind **Marquês de Pombal** Square, the site boasts a beautiful green area, as well as two 1930s greenhouses, featuring flower and plant species from around the world.

It also hosts events such as book fairs, concerts, and exhibitions.



Basilica da Estrela

Topped by a impressive dome, this vast church stands on top of a hill in the west of the city, opposite the Jardim da **Estrela**. Local tip: take the tram 28 from Alfama Right Point, and enjoy the ride!



Don't miss out! Follow us for more tips: [@alfamarp](#)

DAY TRIPS



Beyond Lisbon's charm, within an hour's journey, discover majestic palaces, golden beaches, wild dolphin sanctuaries, and profound spiritual sites.

Cascais

Cascais is the premier holiday destination of the Portuguese Riviera, as well as being a fascinating town to visit. Stroll its cobbled center, relax on sandy beaches, and visit the dramatic Boca do Inferno cliff formation



Sintra

A fairytale mountain retreat recognized as a UNESCO World Heritage site. Explore the colorful Pena Palace, the mystical Quinta da Regaleira, and the Moorish Castle. Helpful tip: book tickets for Pena Palace online and in advance.



Don't miss out! Follow us for more tips: [@alfamarp](#)

DAY TRIPS



Fátima

One of the world's most important Catholic pilgrimage sites. Visit the Sanctuary to witness the profound faith and architecture commemorating the 1917 Apparitions of the Virgin Mary. A place of powerful spirituality.

Setúbal



Authentic port city nestled between sea and mountain. Famous for its fresh seafood, muscatel wine, and boat tours to see dolphins in the estuary. *A car ride through the Arrábida Park provides stunning views.



Don't miss out! Follow us for more tips: [@alfamarp](#)



Find (and loose) yourself in Alfama!



Don't miss out! Follow us for more tips: [@alfamarp](https://www.instagram.com/alfamarp)

Always check the information before going!

Click the links below for more details

[Castelo São Jorge](#)

[Catedral da Sé](#)

[Miradouro Portas do Sol](#)

[Time Out Market](#)

[O Mundo Fantástico das Sardinhas](#)

[Convento/Museu do Carmo](#)

[Mosteiro Jerónimos](#)

[Pastel de Belém](#)

[Torre de Belém](#)

[Telecabine \(Gondola Lift\)](#)

[Oceanário de Lisboa](#)



Don't miss out! Follow us for more tips: **@alfamarp**



Alfama

Right Point

You in the Right Place in Lisbon!

Don't miss out! Follow us for more tips: [@alfamarp](https://www.instagram.com/alfamarp)

