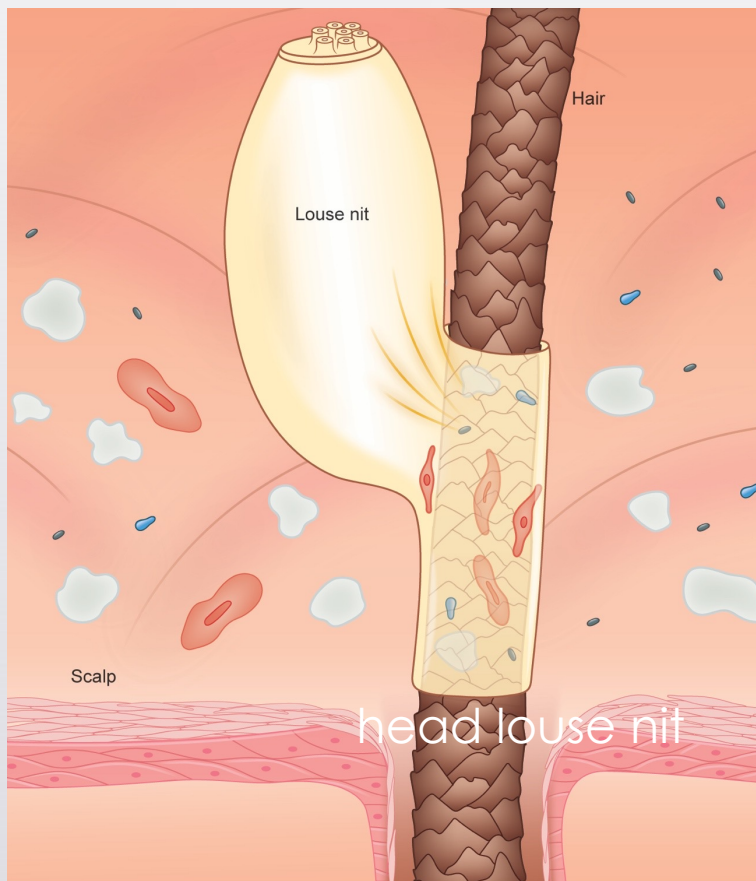
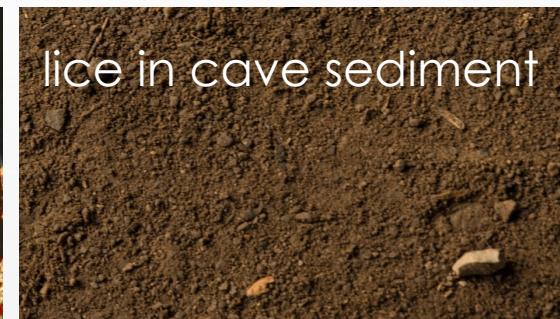
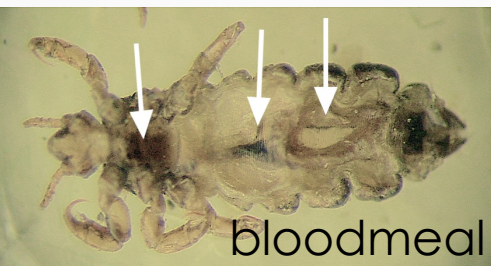
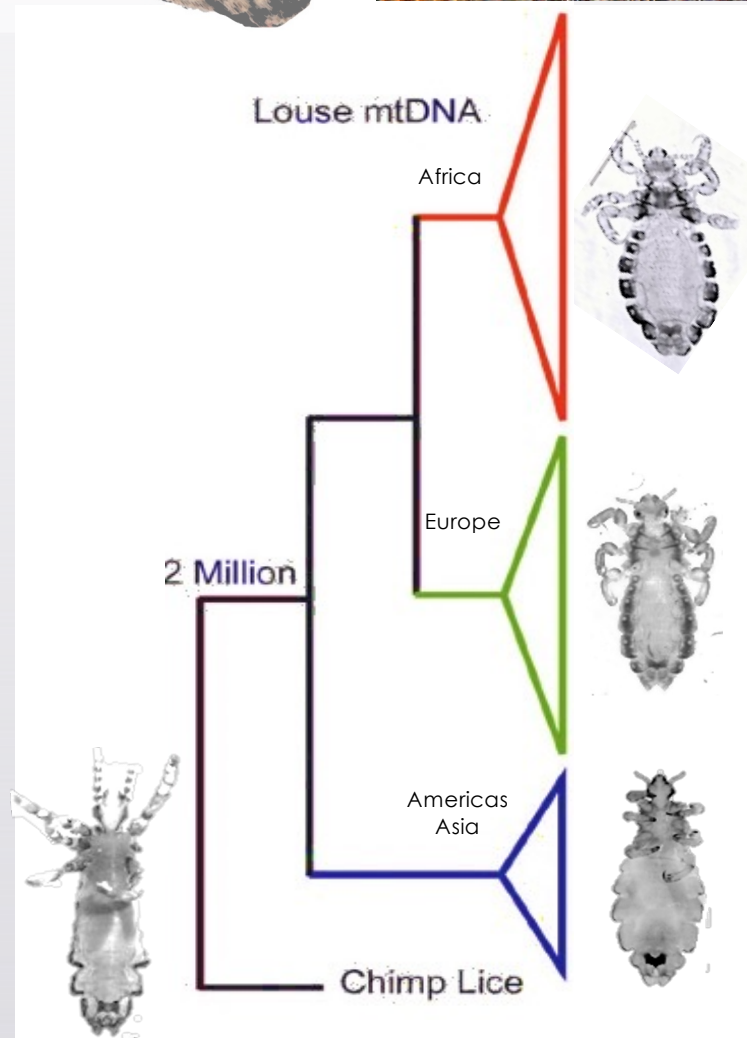


# Human ectoparasites as mirrors and archives of host evolutionary history

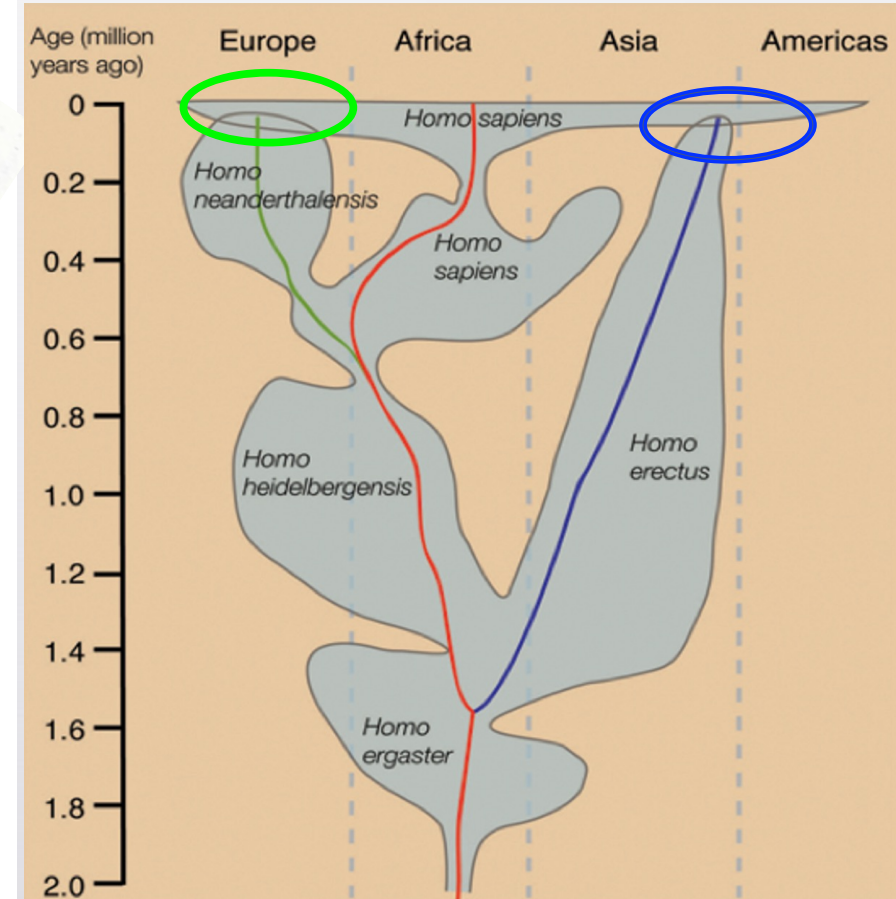
Lice offer host DNA via non-destructive sampling



head louse nits preserve human DNA



lice reflect physical contact between human lineages



lice follow human evolution

M. Alejandra Perotti<sup>1</sup>, David Reed<sup>2</sup>, Kosta Y. Mumcuoglu<sup>3</sup>,  
Mikkel W. Pedersen<sup>4</sup>, Pavel B. Klimov<sup>5,6</sup>, and Henk R. Braig<sup>5,7</sup>

<sup>1</sup> School of Biological Sciences, University of Reading, UK / <sup>2</sup> Florida Museum of Natural History, University of Florida, USA / <sup>3</sup> Parasitology Unit, Department of Microbiology and Molecular Genetics, The Hebrew University-Hadassah Medical School, Jerusalem, Israel / <sup>4</sup> GLOBE Institute, Faculty of Health and Medical Science, University of Copenhagen, Denmark / <sup>5</sup> School of Natural Sciences, Bangor University, Wales, UK / <sup>6</sup> Department of Ecology and Evolutionary Biology, University of Michigan, USA / <sup>7</sup> Institute and Museum of Natural Sciences, National University of San Juan, Argentina