



Woodspec.ae

Your Vision  
Our Craft

# Company Portfolio





# *Welcome to Woodspec Interiors*



At WoodSPEC Interiors, we specialize in high-quality joinery works and interior design and Interior Decoration Works. Our mission is to deliver creative and customized solutions that align with our clients' visions, focusing on precision and excellence. We take pride in combining innovation with craftsmanship to exceed expectations.

**Together, we shape exceptional spaces.**

# Table of Contents

Welcome Message	
Table Of Contents	page 01
History	page 02
Vision & Mission	page 02
Timeline	page 03-06
Our Teams	page 07
Portfolio & Mockup	page 09-10
Organizational Structure	page 11
Carpentry Equipment	page 14
Project,	page 19-43
Contact Information	page 54



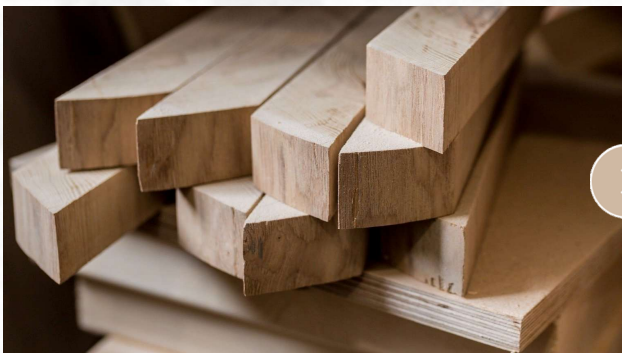




# This Is Our History

Woodspec Interiors was established in 2022 in the United Arab Emirates, Dubai, in the Ras Al Khor area. The company had a successful start, taking on a variety of projects, both residential and office-related. Over time, the company began expanding its workforce, equipment, and project capacity. Today, WoodSPEC has grown into a medium-sized company in the fields of carpentry, interior design, and decoration, with more than 50 employees and workers. The company undertakes around 5 to 10 projects each month, ranging from small to large-scale projects. We are always striving for further progress and growth.





# Our Vision

**Woodspec Interior LLC** aims to lead in joinery and interior design by offering innovative, high-quality, and sustainable solutions. Committed to excellence, we provide precise joinery and elegant interiors that enhance lifestyles and meet client needs. Using the finest wood, we ensure top-quality craftsmanship and luxurious designs that set new standards in the industry.



## What We Do

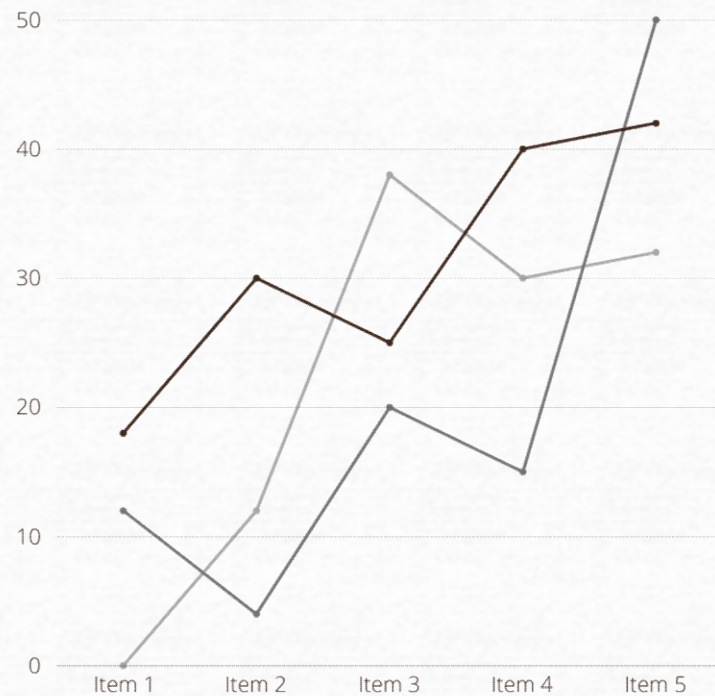
- **Custom Joinery:** Tailored woodwork solutions, including furniture, cabinetry, kitchens and partitions.
- **Interior Design:** Transforming spaces with creative and functional interior designs. Custom.
- **Furniture Design:** Designing and crafting furniture to fit client needs and style. High.
- **Quality Craftsmanship:** Ensuring precision and top-quality materials in every project.
- **Sustainable Solutions:** Using eco-friendly materials and practices for long-lasting designs.



# Our Mission

- Provide exceptional joinery and interior design solutions that combine creativity and functionality. We aim to exceed our clients' expectations by delivering high-quality craftsmanship, personalized service, and innovative designs that transform spaces into functional works of art. We are committed to using the finest materials and the latest joinery techniques to create beautiful, long-lasting environments that enhance our clients' lifestyle





# Our Goals

- **Top-quality Craftsmanship:** Custom woodwork of the highest standard. Innovative Designs:
- **Functional and creative solutions** tailored to clients.
- **Client Satisfaction:** On-time, high-quality results.
- **Continuous Improvement:** Adapting to industry trends and technologies.
- **Cost Efficiency:** Delivering projects within budget and on schedule.



# Our Commitment to Quality

- "At Woodspec Interior LLC, we are committed to delivering the highest levels of quality in every project we undertake. We have brought together a team of the best professional carpenters, skilled and experienced in their fields, along with the use of the latest advanced machinery specialized in woodworking. We also ensure the sourcing of raw materials from top suppliers who provide high-quality materials that guarantee the durability and aesthetic appeal of our products. Our team includes professional engineers and quality controllers who work together to ensure strict adherence to the highest quality standards at every stage of production. Thanks to these integrated elements, we are able to deliver exceptional products in record time without compromising on quality."



# > Our Services

We're with you every step of the way – from concept to execution and beyond.



## > Execution

With an experienced team and in-house workshop, we bring your design to life with precision and high craftsmanship.

- Custom furniture fabrication in our joinery
- Full interior fit-out works
- Wood and decorative finishing
- Commitment to quality and deadlines

## > Maintenance

With an experienced team and in-house workshop, we bring your design to life with precision and high craftsmanship.

- joinery Full interior fit-out works
- Wood and decorative finishing
- Commitment to quality and deadlines
- Custom furniture fabrication in our

## > Design Service

We offer creative and functional interior and architectural design solutions tailored to your style, space, and budget.

- Space planning and layout analysis
- Material and color selection
- Realistic 3D visualizations
- Detailed execution drawings

*\*Design service is free when you execute the project with us*



# Our Timeline

This timeline ensures efficient project execution with high quality, delivered on schedule.

Start



## Phase 01

### Gathering Information, Design, and Analysis:

Collecting and analyzing project details and specifications to ensure a complete understanding of the project.



## Phase 02

### Manufacturing and Finishing

Manufacturing furniture and wooden components using modern techniques and ensuring quality at every stage of production.



## Phase 03

### Quality Control

Ensuring all work meets the highest standards from production to on-site installation.



## Phase 04

### On-Site Installation

Installing furniture on-site with precision, adhering to specified standards and maintaining high quality.

Finish



# Our Teams

Our team at WoodSPEC consists of a group of experienced professionals in the fields of carpentry, interior design, and project supervision. We believe that collaboration between different specialties is key to providing the best solutions for our clients. Here are some of the key members of our team:

## Specialized Carpenters

Our team of carpenters has exceptional skill in executing customized wooden works such as furniture, cabinets, and kitchens. We use the latest techniques and tools to ensure precision and quality in our work.

## Project Managers

Our project managers are responsible for ensuring that each project runs smoothly, adhering to the set timelines and project budgets, to ensure complete client satisfaction.

## Interior Designers Engineer and Supervisors

Our specialized interior designers are responsible for transforming ideas into innovative and practical designs that meet the client's needs. Additionally, our project supervisors oversee the full implementation of projects, ensuring that design standards are accurately followed and that the work is completed according to the required specifications.

## Technical and Administrative Support Team

The technical and administrative support team provides the necessary assistance to all departments, ensuring smooth and accurate workflow.



# Our Specialized Carpenters Team

**Our team of carpenters** is led by skilled carpentry technicians under the supervision of interior designers and architects. We have a team of professional carpenters specializing in various carpentry disciplines, ensuring the highest level of craftsmanship and precision in every project.



## Furniture Carpenter

Specializes in designing and crafting custom wooden furniture, such as beds, tables, chairs, and cabinets.



## Installation Carpenter

Works on installing doors, windows, wooden floors, and other interior fittings.



## Architectural Carpenter

Specializes in architectural woodwork, such as wooden structures for buildings, interior surfaces, and decorative elements.



## Finishing Carpenter

Focuses on adding final finishes to furniture or wooden structures, such as painting or polishing.



## Cabinet Carpenter:

Specializes in designing and crafting cabinets for bedrooms, kitchens, and storage spaces.



## Our Strategic Partnerships

WoodSPEC Interior LLC aims to establish strategic partnerships with various sectors to ensure seamless integration in interior design projects and woodworking solutions. The targeted collaborations include:

Interior Design  
Firms & Designer

Contracting and Real  
Estate Development  
Companies

Hotels and Resorts  
Restaurants and Cafés  
Hospitals and Medical Centers  
Schools and Universities  
...etc

Commercial  
Companies and  
Organizations

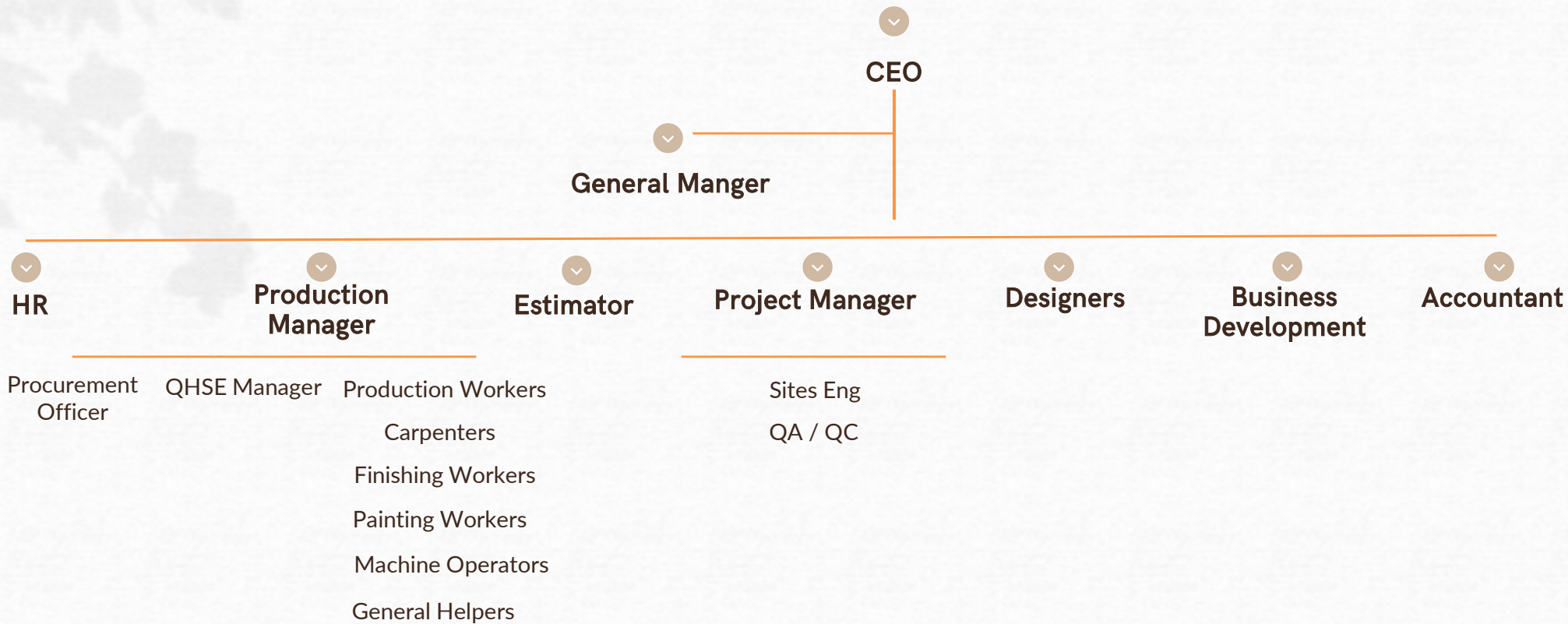
Exhibitions and  
Showrooms

Individuals and  
Homeowners

We aim to deliver comprehensive services that exceed our clients' expectations by focusing on quality, innovation, and precision, solidifying our position as a trusted partner in the interior design sector.







# Organizational Structure

At WoodSPEC Interior LLC, we take pride in our strong organizational structure, which relies on diversity and efficiency in the workforce. Our team consists of specialists in various fields to ensure the delivery of exceptional and reliable services. From skilled carpenters and specialized engineers to technical supervisors and quality managers, every member of the team works collaboratively to achieve the highest levels of performance and quality. This effective structure enables us to meet our clients' needs efficiently and on time, while maintaining high quality throughout all stages of production."

## Our Modern Carpentry Equipment



At WoodSPEC, we use advanced carpentry technology and machinery to ensure precision and efficiency in all our projects. Our state-of-the-art equipment includes:



### Table Saws

Essential for accurate straight cuts on large wooden panels and sheets.



### Edge Bander

For applying edge banding on plywood or MDF panels to give them a finished look.



## Our Modern Carpentry Equipment



**CNC Machines** For precise cutting, shaping, and engraving of wood, allowing for intricate designs and fast production.



### Wood Press Machine

is used for compressing wood or wooden materials under high pressure to shape or bond them with other materials such as adhesives or fibers, creating products like compressed boards or plywood.





## Our Modern Carpentry Equipment



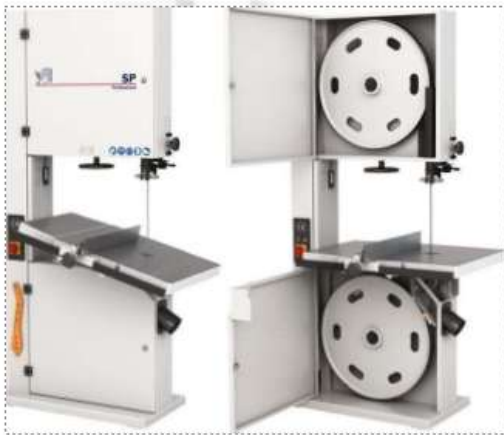
**Boring machine** A **boring machine for wood** is a type of woodworking equipment used to create **precise holes** in wooden pieces. These machines are commonly used in cabinetry, furniture making, and other woodworking tasks where clean, accurate holes are needed for dowels, hinges, or hardware.



## Our Modern Carpentry Equipment



**Band Saws** For cutting irregular shapes and curves in wood.



**Wood Lathes**  
For cutting irregular shapes and curves in wood.



## Our Modern Carpentry Equipment



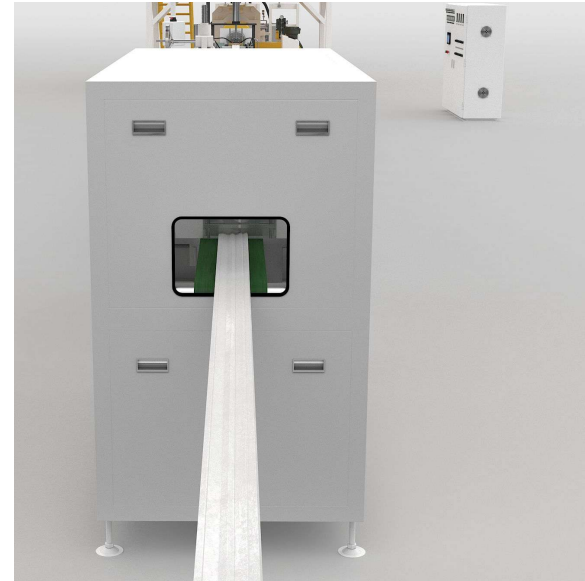
### Drill Presses

For drilling precise and consistent holes in wood



### Molding and Cornice Machine

This machine is used to create decorative shapes in wood, such as profiles (decorative carvings) and cornices (ornate edges), and is commonly used in furniture manufacturing and architectural decorations.



## Our Modern Carpentry Equipment



### Dust Collection Systems

o maintain a clean and safe work environment by removing dust created during cutting and sanding.



### Planers

To smooth and level wood surfaces for uniform thickness.





## Our Modern Carpentry Equipment

### Spray Booth Systems

A spray booth system is an enclosed or semi-enclosed structure designed for applying coatings such as paint, lacquer, or varnish to a variety of surfaces, including wood, metal, or plastic. These systems ensure a controlled environment for painting, improving the quality of finishes, minimizing overspray, and ensuring safety by containing hazardous fumes and





# Our Best Project

At WoodSPEC, we take pride in our collection of distinguished projects executed across the United Arab Emirates. Here are some of our standout projects



< Khwaneej Last Exit Villa -Dubai



> Dressing Rooms



## < Khwaneej Last Exit Villa -Dubai



## > Kitchens



< Khwaneej Last Exit Villa -Dubai



> Kitchens

< Khwaneej Last Exit Villa -Dubai



> Pantery

< Khwaneej Last Exit Villa -Dubai



> Family Hall TV Unit & Cladding





< Khwaneej Last Exit Villa -Dubai



> Doors



> Electrical Box



## < KSA – Jeddah Office Project



> **Wall Cladding**

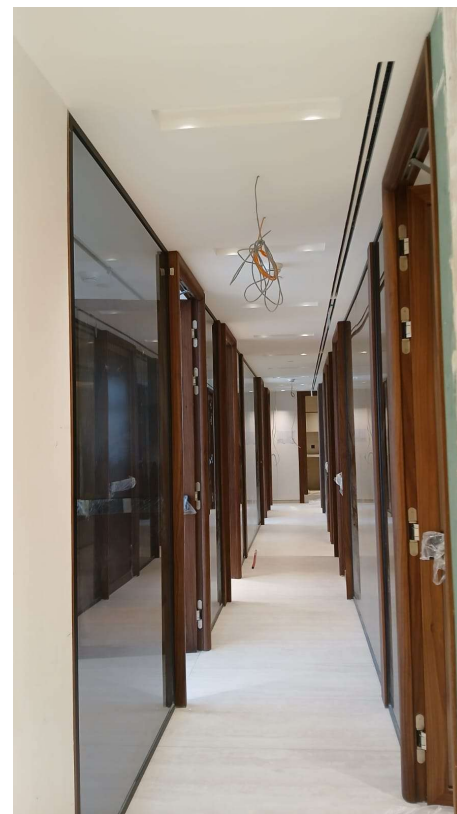


> **Office Cabinet**

## < KSA – Jeddah Office Project



> Wall Cladding

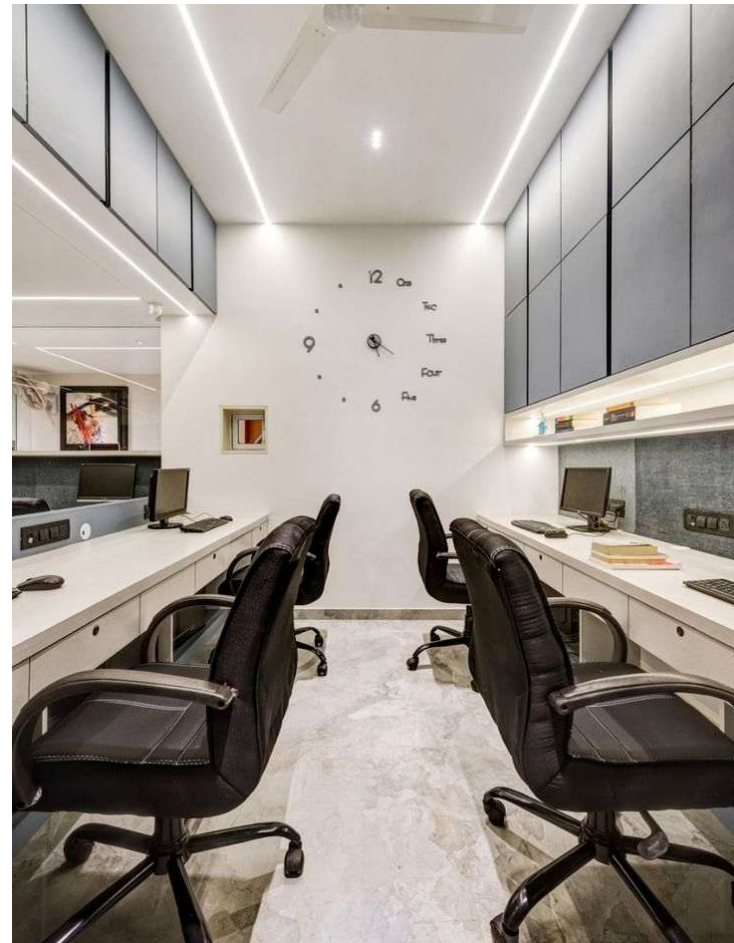


> Office Glassed Door with wood frame Veneer Finish

## < KSA – Jeddah Office Project



> Kitchen Cabinet



> Office Area

< KSA – Jeddah Office Project



> Office



> Wall Cladding



< **KSA – Jeddah Office Project**



> **Reception counter**

< **Dubai – Al Safa Villa Project**



> **Wall Decorations and  
Paneling MR Mdf Veneer  
Finish**



> **TV Unit MR MDF With Veneer  
Finish**



**Door Panel Solid Wood &  
Solid Core Veneer Finish**



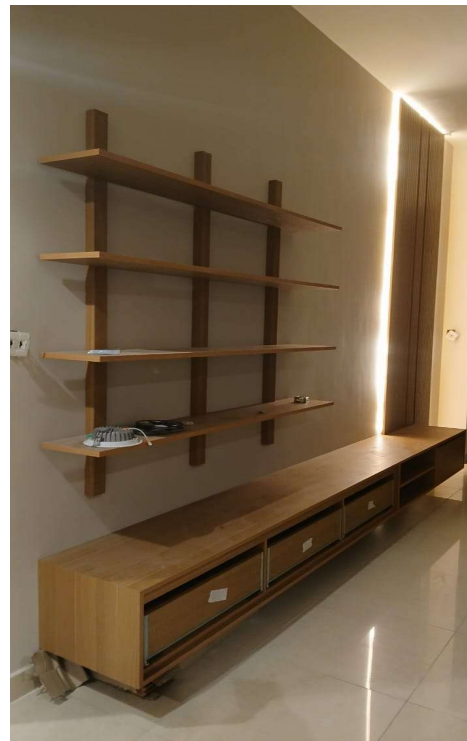
1

**Open Kitchen & Decoration  
Panel Mr MDF Veneer Finish**

## < Dubai – Al Safa Villa Project



1 Wall Decorations and  
Paneling Mr MDF Veneer  
Finish



1 Tv Unit Mdf Veneer Finish



## < Dubai – Private villa in Jumeirah



1 Wall Decorations and Paneling



1 Wardrobes for Dressing Room



1 Handrails for Staircases  
Solid Wood

< Dubai – Private villa in Jumeirah



1

TV Unit



1

Classic Kitchen

## < Dubai – Private villa in Jumeirah

WOODSPEC  
INTERIORS



1 Vanity Unit



1 Wardrobes for Dressing Room MR



## Dubai – Private villa in Jumeirah



1 Kitchen Cabinet



1 Kitchen Cabinet





## Ras Al Ekimah – Luxury Villa Ras Al Ekimah



1 Vanity Unit



1 Tall Kitchen Unit



1 Bathroom Overhead Cabinets

## < Ras Al Ekimah – Luxury Villa Ras Al Ekimah

WOODSPEC  
INTERIORS



1 Entrance Decoration Cladding



1 Tall Kitchen Unit  
Cabinets

## < Ras Al Ekimah – Luxury Villa Ras Al Ekimah



1 Wooden Curtain Wal



1 Full Bed Design wood  
Decoration



1 Glazed Cabinets



Ras Al Ekimah – Luxury Villa



1 Kitchen Capinets



1 Kitchen Cabinets





## Dubai – SDA Office -Deara



Office Cabinet Mr MDF  
Veneer Finish



Wood Wall Panel  
Decoration Mdf malamain  
Finish



## Dubai – Hotel Rooms



1 Fall Bedroom Furniture



1 TV Unit Mr Mdf

## < Dubai – Luxury Villa In Jumeirah



1 Majles



1 Open Kitchen



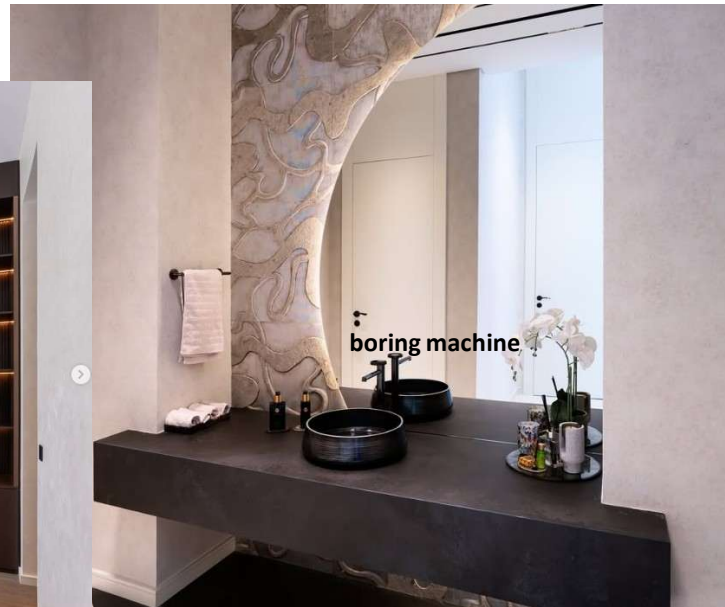
1 Dressing Room



## < Dubai – Luxury Villa In Awier



1 Office



1 Washing



1 Tv Unit



## < Dubai – Luxury Villa In Awier





## Dubai – AL Khwaneej 3 Villa



1 Open kitchen



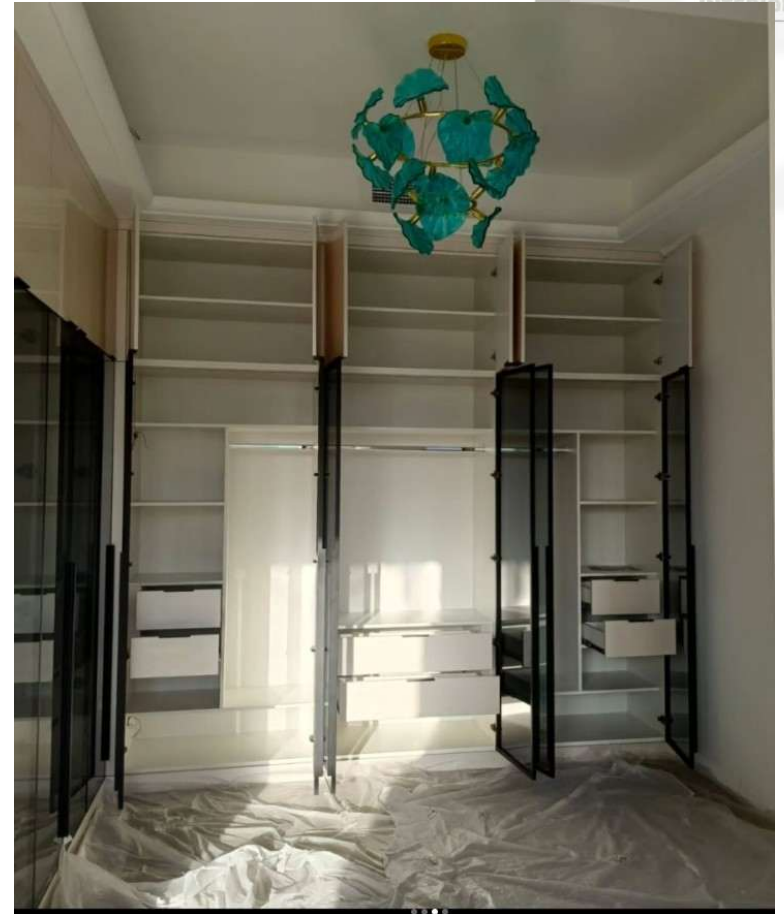
1 Open Kitchen



## Dubai - AL Khwaneej 3



1 Dressing Room



1 Dressing Room

< Dubai – Nad Alshiba Villa Project



1

1 kitchen



1

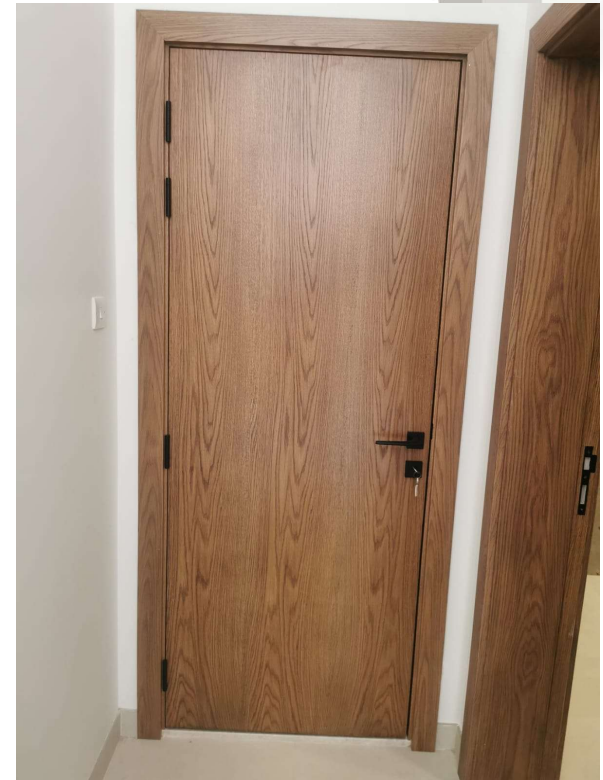
kitchen





## Dubai – Nad Alshiba Villa Project

**WOODSPEC**  
INTERIORS



1 Swing Doors



## Dubai -Khwaneej 1 Villa



1 Dressing Room



1 Dressing Room



## Dubai - Khwaneej 1 Villa



### 1 Custom Tv Unit





## Dubai - Khwaneej 1 Villa



1 Kitchen



# Contact Information

## PHONE NUMBER

+971 527472865

## PHONE NUMBER

048348714

## EMAIL ADDRESS

Info@woodspect.com

## WEBSITE

Woodspect.ae

## Location

Ras Al Khor Industrial Area, Dubai, UAE.

Instagram



WOODSPECINTERIORS

