

Floss 1910



CE   IP20 t_a 40°C t_c 100°C

User Manual

KEEP THIS MANUAL FOR FUTURE NEEDS

1 SAFETY INSTRUCTIONS



CAUTION

Be careful with your operations. With a dangerous voltage you can suffer a dangerous electric shock when touching wires!

This device has left the factory in perfect condition. In order to maintain this condition and to ensure a safe operation, it is absolutely necessary for the user to follow the safety instructions and warning notes written in this user manual.



IMPORTANT

Damages caused by the disregard of this user manual are not subject to warranty. The dealer will not accept liability for any resulting defects or problems.

If the device has been exposed to temperature changes due to environmental changes, do not switch it on immediately. The arising condensation could damage the device. Leave the device switched off until it has reached room temperature.

This device falls under protection-class I. Therefore it is essential that the device be earthed.

The electric connection must be carried out by a qualified person.

The device shall only be used with the rated voltage and frequency.

Make sure that the available voltage is not higher than stated at the end of this manual.

Make sure the power cord is never crimped or damaged by sharp edges. If this would be the case, replacement of the cable must be done by an authorised dealer.

Always disconnect from the mains, when the device is not in use or before cleaning it. Only handle the power cord by the plug. Never pull out the plug by tugging the power cord.

During initial start-up some smoke or smell may arise. This is a normal process and does not necessarily mean that the device is defective, it should decrease gradually.

Please don't project the beam onto combustible substances.

Fixtures cannot be installed on combustible substances, keep more than 50cm distance with wall for smooth air flow, so there should be no shelter for fans and ventilation for heat radiation.

If the external flexible cable or cord of this luminaire is damaged, it shall be exclusively replaced by the manufacturer or his service agent or a similar qualified person in order to avoid a hazard.

8 MAINTENANCE AND CLEANING

The following points have to be considered during the inspection:

- 1) All screws for installing the devices or parts of the device have to be tightly connected and must not be corroded.
- 2) There must not be any deformations on the housing, colour lenses, fixations and installation spots (ceiling, suspension, trussing).
- 3) Mechanically moved parts must not show any traces of wearing and must not rotate with unbalances.
- 4) The electric power supply cables must not show any damage, material fatigue or sediments.

Further instructions depending on the installation spot and usage have to be adhered by a skilled installer and any safety problems have to be removed.



CAUTION

Disconnect from mains before starting maintenance operation.



In order to keep the lights in good condition and extend the life time, we suggest regular cleaning to the fixture.

- 1) Clean the inside and outside lens each month to avoid the dulling of the lights due to accumulation of dust.
- 2) Clean the fan each month.
- 3) A detailed electrical check by approved electrician each three months, make sure that the circuit contacts are in good condition, to prevent the circuit from overheating.

We recommend a frequent cleaning of the device. Please use a moist, lint-free cloth. Never use alcohol or solvents.

There are no serviceable parts inside the device. Please refer to the instructions under "Installation instructions".

Should you need any spare parts, please order genuine parts from your local dealer.

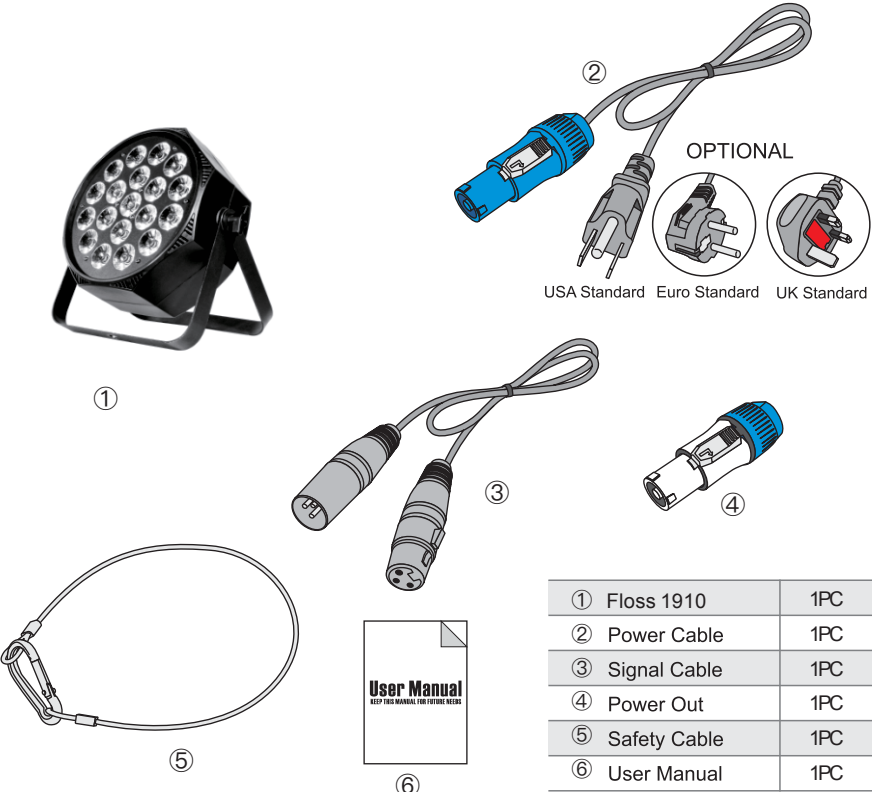
12CH Mode		
CH	DMX Value	Function
CH1	0-255	RED Dimmer ring 1 (0-1 Off, 2-255 Dimmer from Dim to Bright)
CH2	0-255	GREEN dimmer ring 1 (0-1 Off, 2-255 Dimmer from Dim to Bright)
CH3	0-255	BLUE dimmer ring 1 (0-1 Off, 2-255 Dimmer from Dim to Bright)
CH4	0-255	WHITE dimmer ring 1 (0-1 Off, 2-255 Dimmer from Dim to Bright)
CH5	0-255	RED Dimmer ring 2 (0-1 Off, 2-255 Dimmer from Dim to Bright)
CH6	0-255	GREEN dimmer ring 2 (0-1 Off, 2-255 Dimmer from Dim to Bright)
CH7	0-255	BLUE dimmer ring 2 (0-1 Off, 2-255 Dimmer from Dim to Bright)
CH8	0-255	WHITE dimmer ring 2 (0-1 Off, 2-255 Dimmer from Dim to Bright)
CH9	0-255	RED Dimmer centre (0-1 Off, 2-255 Dimmer from Dim to Bright)
CH10	0-255	GREEN dimmer centre (0-1 Off, 2-255 Dimmer from Dim to Bright)
CH11	0-255	BLUE dimmer centre (0-1 Off, 2-255 Dimmer from Dim to Bright)
CH12	0-255	WHITE dimmer centre (0-1 Off, 2-255 Dimmer from Dim to Bright)

2 UNPACKING

The Floss 1910 is a high power indoor LED flat par light using 19 x 10W 4-IN-1 RGBW LEDs which is designed with 3 individual rings. It's available for 2800K-5600K colour temperature adjustment.

It features excellent colour mixing, quiet running and flicker free control. The fixture is built in with 6 internal dynamic effects with variable speed. The PAR also features optimum optic design integrated with extremely effective aluminium heat sink system.

The Floss 1910 is designed for applications as concerts, TV studios, conference halls, bars, pubs, DJ entertainment, etc.



3 FEATURES & SPECIFICATIONS

19 x 10W 4-IN-1 LEDs(RGBW)
 3 Individual control rings
 Flicker free operation for broadcast TV and FILM
 Life Span: 50000H
 High efficiency optic system
 25°Beam angle (other angles optional)
 35°Field angle
 High output
 RGBW
 Colour mixing capability
 CTO, 2800K-5600K colour temperature adjustment
 6 x built-in dynamic effects with variable speed
 0-25Hz LED strobe effect with variable speed
 4/5/7/9/12ch DMX modes
 DMX512, DMX or auto operation
 Shielded input signal protection for stable signal without interference
 5-pin XLRconnectors IN/OUT
 1.44" TFT LCD display
 4 Control buttons
 180°Reversible for LCD display
 Display auto OFF
 DMX signal and error monitoring indicators
 Electronic supply with active PFC
 AC100-240V 50/60Hz
 PowerCON connectors IN&OUT
 190W Power consumption
 IP20 protection rating
 N.W.: 2.23kg
 G.W.: 3.04kg(1PCS)/13.16kg(4PCS)
 Product Dimensions: 101(D)*258(W)*264.5(H)mm
 Packing Dimensions: 290(D)*310(W)*170(H)mm(1PCS)
 325(D)*615(W)*375(H)mm(4PCS)

7 DMX CHANNELS

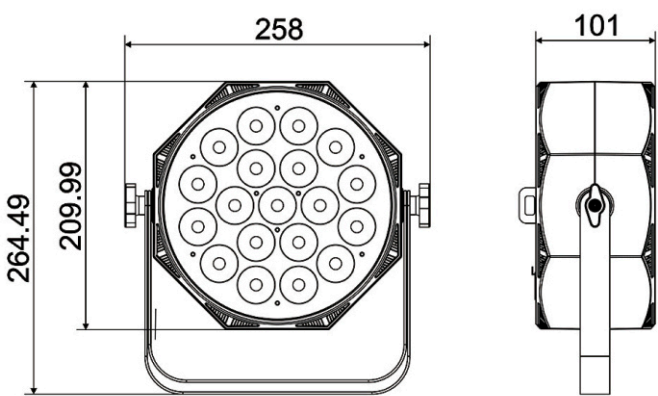
4CH Mode		
CH	DMX Value	Function
CH1	0-255	RED dimmer (0-1 Off, 2-255 Dimmer from Dim to Bright)
CH2	0-255	GREEN dimmer (0-1 Off, 2-255 Dimmer from Dim to Bright)
CH3	0-255	BLUE dimmer (0-1 Off, 2-255 Dimmer from Dim to Bright)
CH4	0-255	CTO (0-7 Off, 8-255 2800K-5600K)

5CH Mode		
CH	DMX Value	Function
CH1	0-255	RED dimmer (0-1 Off, 2-255 Dimmer from Dim to Bright)
CH2	0-255	GREEN dimmer (0-1 Off, 2-255 Dimmer from Dim to Bright)
CH3	0-255	BLUE dimmer (0-1 Off, 2-255 Dimmer from Dim to Bright)
CH4	0-255	WHITE dimmer (0-1 Off, 2-255 Dimmer from Dim to Bright)
CH5	0-255	CTO (0-7 Off, 8-255 2800K-5600K)

7CH Mode		
CH	DMX Value	Function
CH1	0-255	RED dimmer (0-1 Off, 2-255 Dimmer from Dim to Bright)
CH2	0-255	GREEN dimmer (0-1 Off, 2-255 Dimmer from Dim to Bright)
CH3	0-255	BLUE dimmer (0-1 Off, 2-255 Dimmer from Dim to Bright)
CH4	0-255	WHITE dimmer (0-1 Off, 2-255 Dimmer from Dim to Bright)
CH5	0-255	CTO (0-7 Off, 8-255 2800K-5600K)
CH6	0-255	Dimmer (0-1 Off, 2-255 Dimmer from Dim to Bright)
CH7	0-255	strobe (0-1 Off, 2-255 Dimmer from Dim to Bright)

9CH Mode		
CH	DMX Value	Function
CH1	0-255	Dimmer (0-1 Off, 2-255 Dimmer from Dim to Bright)
CH2	0-255	strobe (0-1 Off, 2-255 Dimmer from Dim to Bright)
CH3	0-255	RED dimmer (0-1 Off, 2-255 Dimmer from Dim to Bright)
CH4	0-255	GREEN dimmer (0-1 Off, 2-255 Dimmer from Dim to Bright)
CH5	0-255	BLUE dimmer (0-1 Off, 2-255 Dimmer from Dim to Bright)
CH6	0-255	WHITE dimmer (0-1 Off, 2-255 Dimmer from Dim to Bright)
CH7	0-255	CTO (0-7 Off, 8-255 2800K-5600K)
CH8	0-255	Built-in Effects
	0-255	0 off
	1- 42	Effect 1
	43 - 85	Effect 2
	86 - 128	Effect 3
	129 - 171	Effect 4
	172 - 214	Effect 5
	215 - 255	Effect 6
CH9	0-255	Effect of speed(0-1 Off, 2-255 Dimmer from Dim to Bright)

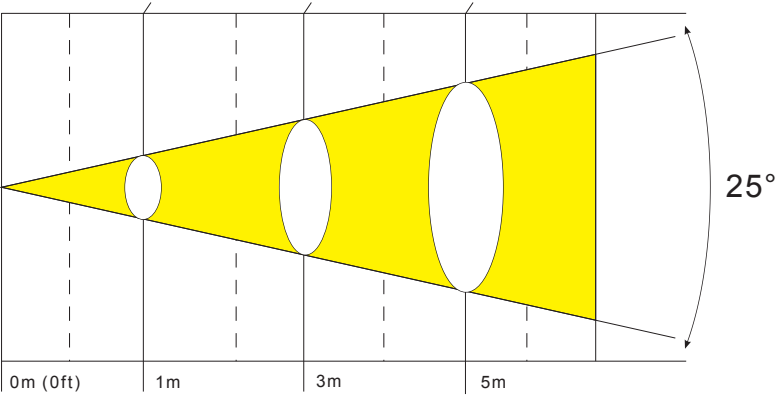
Display	Language	English /Chines			
	Display Reverse	On/Off			
	Display mode	60s, show			



4 PHOTOMETRIC DATA

Photometric Beam Angle Data 25° Beam Angle LUX × 0.0929 = FC

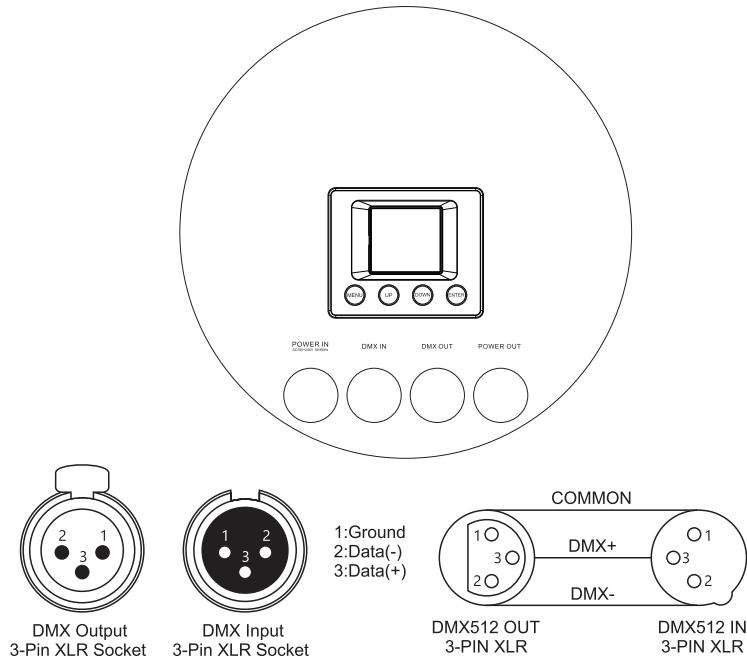
R	5400/501	609/56	173/16
G	12100/1124	1540/143	514/47
B	671/62	91/8	36/3
W	12170/1130	1505/139	507/47
RGBW	30300/2815	3565/331	1150/107 (LUX)



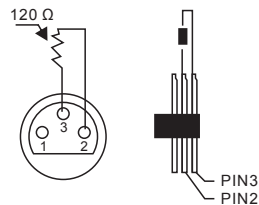
5 DMX-512 CONTROL CONNECTIONS

Connect the provided XLR cable to the female 5-pin XLR output of your controller and the other side to the male 5-pin XLR input of the fixture. You can chain multiple fixtures together through parallel linking. The cable needed should be two core, screened cable with XLR input and output connectors. Please refer to the diagram below.

DMX-512 connection with DMX terminator.



For installations where the DMX cable has to run a long distance or is in an electrically noisy environment, such as in a discotheque, it is recommended to use a DMX terminator. This helps in preventing corruption of the digital control signal by electrical noise. The DMX terminator is simply an XLR plug with a 120 Ω resistor connected between pins 2 and 3, which is then plugged into the output XLR socket of the last fixture in the chain. Please see illustrations below.



6 MENU OPERATIONS

	DMX address	001-512			
	Fixture	DMX ch mode	4,5,7,9,12		
		Run mode	DMX, Manual, AUTO		
		No signal	Clear, Hold		
	Manual	Mode dependant			
	information				
		Temperature			
		Software version			
	Factory				
	Reset	Factory			
		OFF			
		Run			