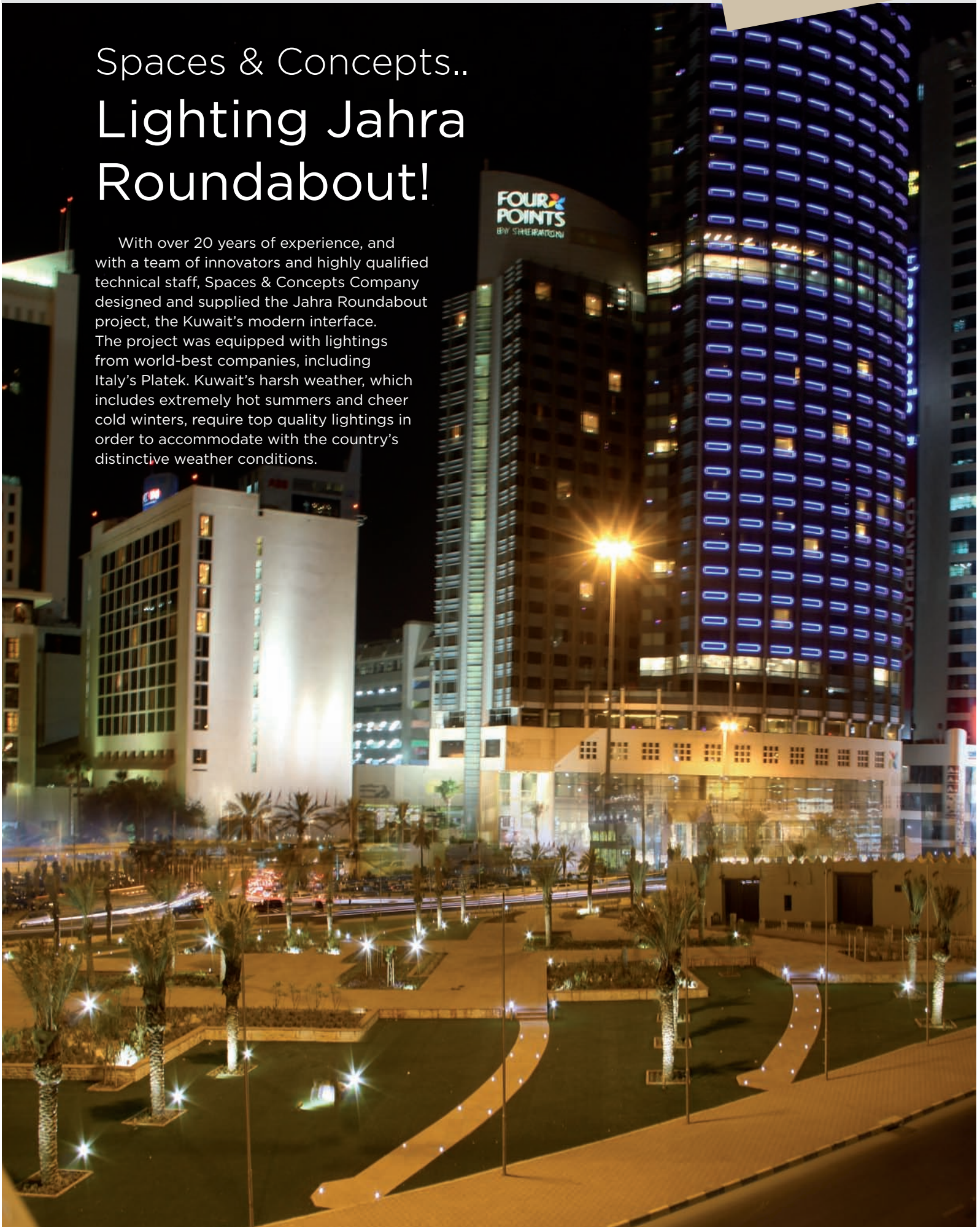




Spaces & Concepts.. Lighting Jahra Roundabout!

With over 20 years of experience, and with a team of innovators and highly qualified technical staff, Spaces & Concepts Company designed and supplied the Jahra Roundabout project, the Kuwait's modern interface. The project was equipped with lightings from world-best companies, including Italy's Platek. Kuwait's harsh weather, which includes extremely hot summers and cheer cold winters, require top quality lightings in order to accommodate with the country's distinctive weather conditions.

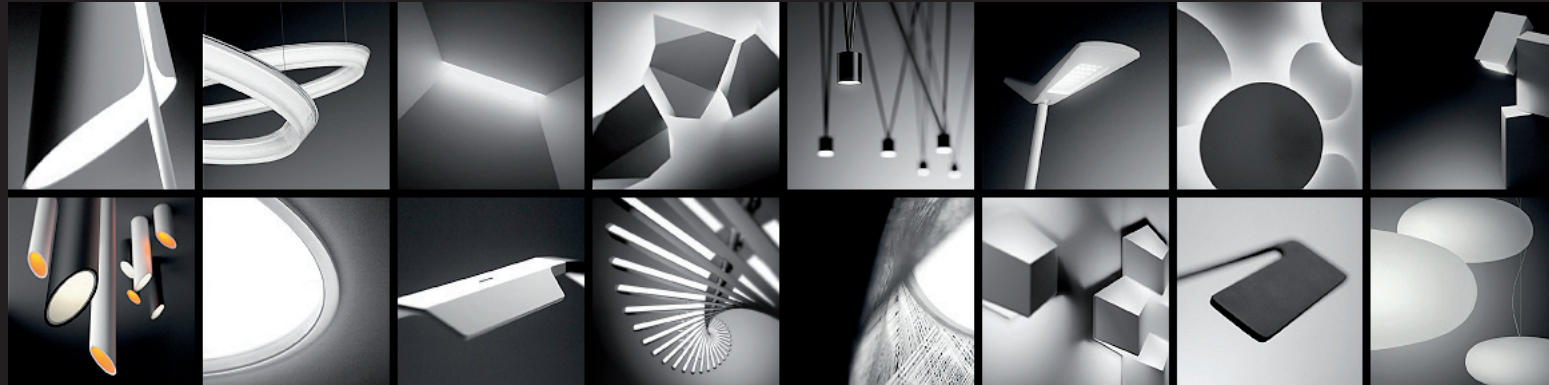


VIBIA
LIGHT IS CREATION

**EXCLUSIVE
FOR KUWAIT**

possibilitiesvibia.com

Welcome to a world full of new possibilities



Step into the universe of VIBIA, where you can play a whole new role, offering even more added value to your clients.

You will discover new creative possibilities which will enable you to make a better choice of light fittings, co-create and customize products and come up with innovative solutions for your lighting projects. In the world of VIBIA you can be as creative as you have never been before.

VIBIA places all the necessary elements in your hands, so that there are no limits to your fantasy. VIBIA helps you expand your creativity, offering you the possibility to generate unique creations and projects and stimulate your inspiration.

MAKE YOUR OWN PRODUCT CREATIONS

- Create your product
- Solutions adaptable to every space
- Try, preview and choose
- Personalized handbook. No chance of mistake
- Customize finishes

ENHANCE YOUR LIGHTING PROJECTS

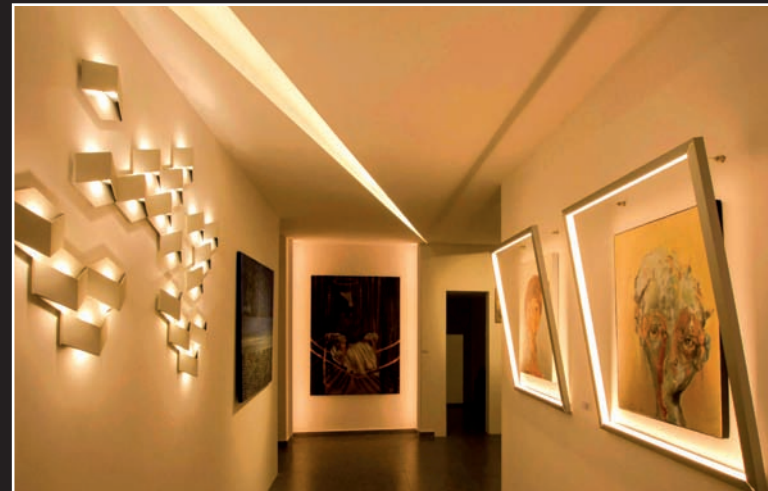
- Select the right product for every space
- Create light scenes
- Create your project report on the fly
- Import CAD / Export 3D

BE INSPIRED

A source of inspiration. While you choose your products, check the Be Inspired gallery for suggestions and ideas of different products to suit different spaces. Welcome to VIBIA.

VIBIA is based in Barcelona (SPAIN), a place of cultivated design culture and an important knowledge cluster, where we have been able to channel our industrial and service suppliers' abilities and construct a top-class team of people. From local knowledge we have built up a global business. We are present in 60 countries and have a subsidiary in New Jersey (USA).

We are in the business of creativity and innovation and we like it. We have developed our own ecosystem to foster innovation and high performance and deliver a new value of proposition. We live for the thrilling challenge of developing top-class products, creating a consistent, global company and being a brand with an international reputation. We believe in our energy and in the future.



VIBIA expands its role as a solutions provider. VIBIA enables its partners, dealers and specifiers to play an active role and to create values for their clients. VIBIA's initiative has in three major values embedded:

CREATIVITY

We're in a business imbued with creativity, from the product

designer who creates the design to the specifiers that shape spaces and illumination objects. VIBIA's goal is to constantly stimulate consumers and professionals throughout the world to create a new experience for them.

COLLABORATION

VIBIA offers a wide range of open objects and tools for creation. The relation built with architects, interior and lighting designers and dealers invites and encourages their participation. Breaking with conservative practices, VIBIA pursues a new kind of relationship with its dealers and commercial networks, seeing them as a substantial part of its business and offering them a new framework for cooperation.

INNOVATION

The current complex context represents a challenge which has led us to develop a ground-breaking successful organizational model to guarantee maximum quality and a high level of service without sacrificing ongoing product development. The technology plays a subtle role: it is invisible and emotive. It is not obvious. It's just making the unthinkable work.



Glamox Luxo Lighting... Modern products and solutions

Glamox Luxo Lighting is a leading supplier of lighting solutions to the professional building market, offering complete product ranges for schools, healthcare facilities, commercial and industrial buildings, retail facilities, hotels and restaurants.



www.glamox.com

Glamox offer a range of lighting brands, and provide the customers with expert advice and solutions. Products are engineered for easy mounting, with modern electronic components and light sources for the best energy efficiency and economy. Lighting solutions help create the experience of comfortable, flexible and stimulating working environments – enhancing efficiency and performance, while taking care of individual needs.

Quality and expertise

Products and solutions are developed and tested by our engineers at our own research and testing facilities, and manufactured and certified in accordance with all relevant quality and environmental standards. They are based on the latest technology and expertise – and generations of experience.

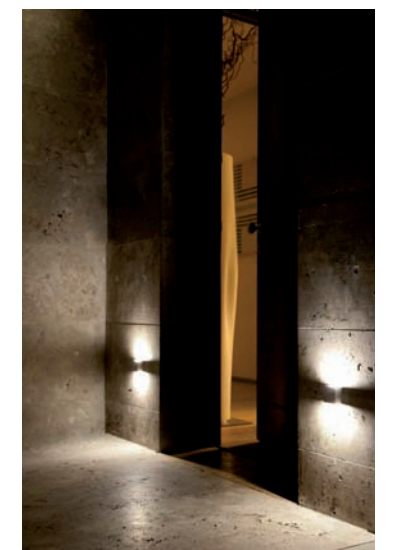
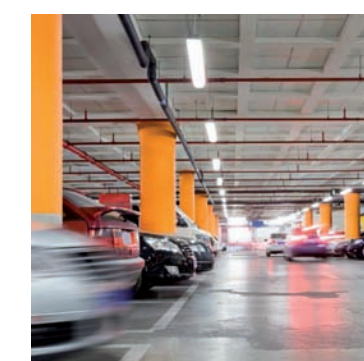
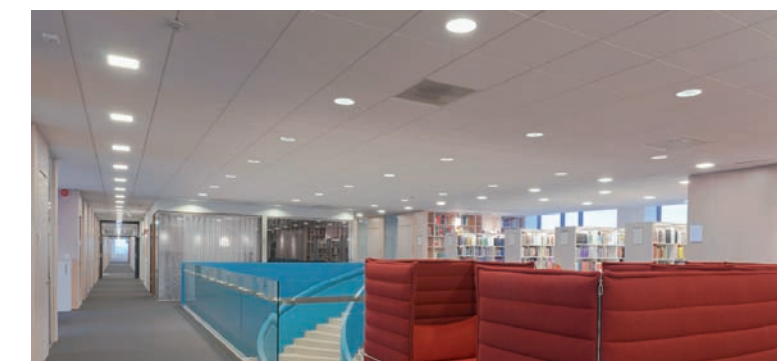
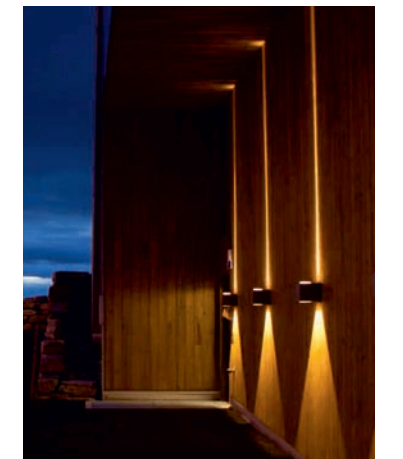
Divisions

• Professional Building Solutions (PBS)

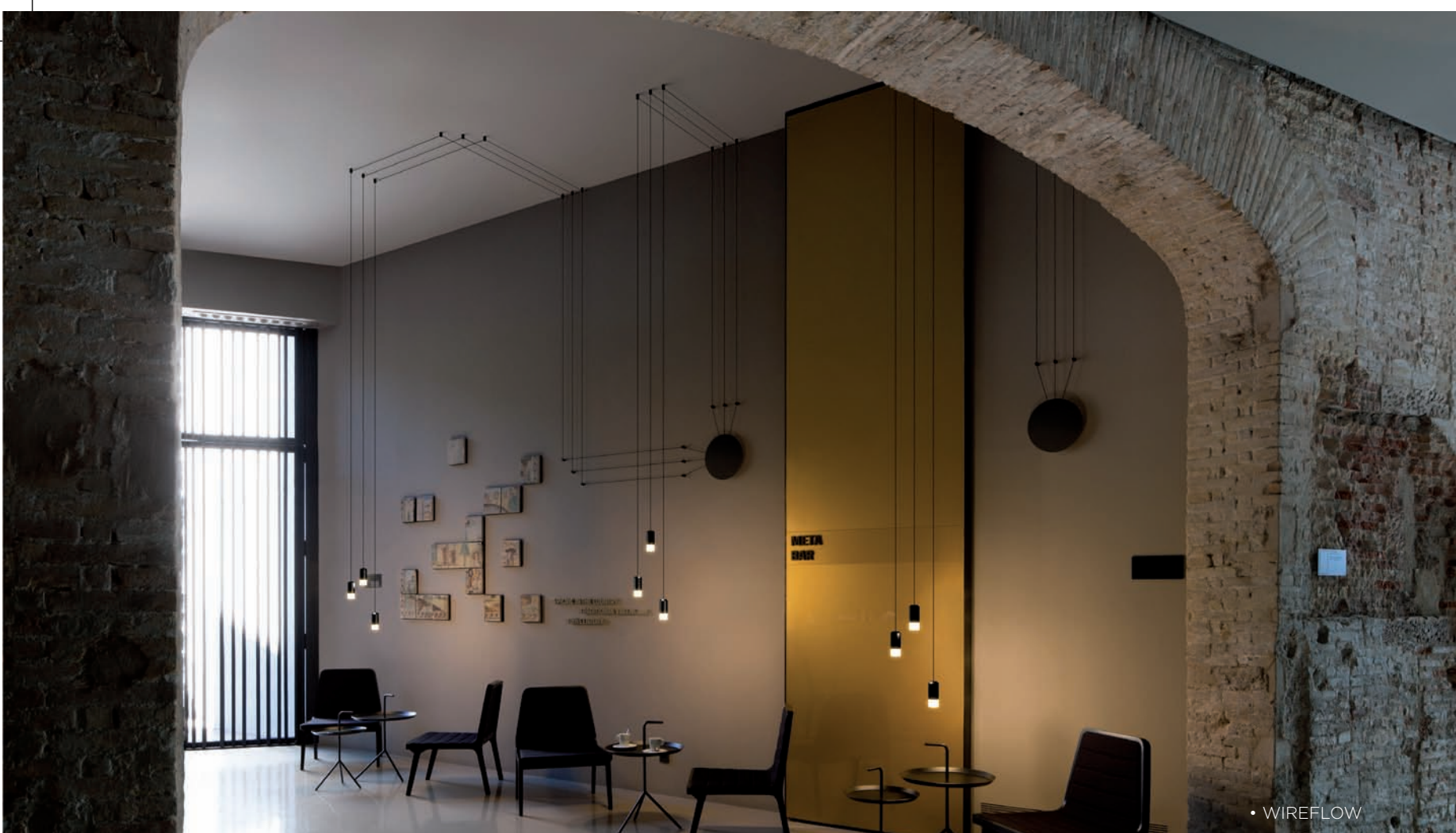
Lighting solutions for land-based market segments.
Glamox offer complete product ranges for schools, healthcare facilities, commercial and industrial buildings, retail facilities, hotels and restaurants.

• Global Marine and Offshore (GMO)

Lighting solutions to the global marine and offshore market.
Glamox is one of the world's leading suppliers of lighting solutions to the global marine and offshore market. Lighting solutions for all maritime applications: Commercial marine Cruise and ferries, Oil & gas, Recreational boats, Navy and Obstruction lighting.



A Quarterly Newsletter published by SPACES & CONCEPTS
GENERAL TRADING & CONTRACTING COMPANY



• WIREFLOW

VIBIA LIGHT IS CREATION



• SET



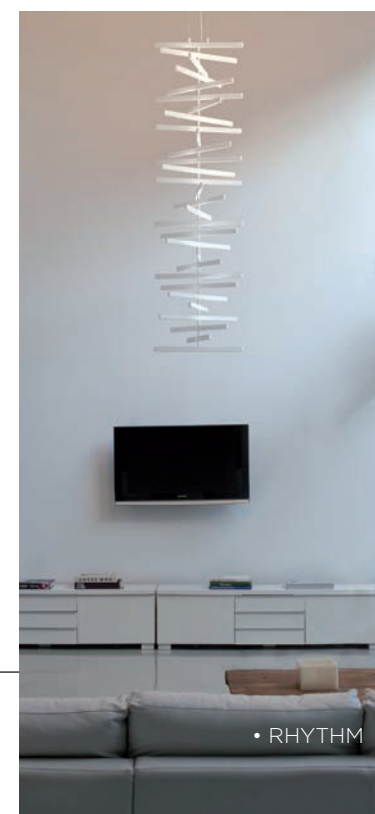
• MERIDIANO

All individuals seek their spaces and each space says something about the person who created it, possesses it, who lives in it and enjoys it... Lighting contributes to any space in that it affects the appearance, atmosphere and feelings it creates.

Light is one of the primal forces that shaped the world as we know it and the creative power of light is now harnessed to create an entire world of customised microuniverses.

Vibia's mission is to make it easier for every individual to identify with the space they live, work in or visit... supplying the right lighting and inspiring creative capabilities and good taste among consumers and architecture and interior- and lighting-design professionals with its unique range of lighting products.

Vibia evolves by studying and understanding the way people live in their spaces, surprising them with apposite and often unexpected ideas to help create the desired feelings.



• RHYTHM



• LINK

SPACES & CONCEPTS www.spacesconcepts.com
GENERAL TRADING & CONTRACTING COMPANY



Intralux... an exclusive partnering

Space & Concepts are very proud and pleased to announce the exclusive partnering with Intralux in Kuwait. Both companies Managing Directors have a long term friendship going back more than 10 years in Kuwait hence reinforcing the strategic association of the two companies. Intralux Australia has a very large installed product footprint in the Middle East since early 2000 with involvement in many of the regions most prestigious projects. Space and Concepts can bring many new opportunities to the Kuwait market with this new alliance, enabling credible supply and support services

Intralux Australia is a dynamic luminaire design and development company, dedicated to manufacturing technically advanced, energy efficient and innovative commercial lighting products for niche market segments. Founded over 25 years ago by Mr David Tilbury, Intralux now exports to over 20 countries from their headquarters and factory in Brisbane, Australia. Intralux's leading edge product development delivers true world class, Australian Made, award winning products, used by professional lighting, architectural and building services designers across the world. Total commitment to ISO 9001 Quality System ensures every aspect of Intralux as a company is seamlessly and systematically managed.

KOVE LED

Kove LED is an adjustable, high performance, modular and fully integrated indirect pelmet/cove lighting system utilising superior Tridonic LED technology. The Tridonic technology partnering enables a confident full 5 year warranty program. A specially designed optical package includes a precise internal reflector and LED module configuration resulting in high lumen output coupled with the smooth, «fluffy» light distribution for which Intralux Kove products are known. Foremost Kove LED offers tremendous efficiency with 1802 lumens/metre emulating the well accepted performance levels and visual feel of the prior fluorescent technology.

Kove LED incorporates an adjustable semi-asymmetric beam direction with additional adjustment of between 0-36 degrees allowing for optimisation of light control. This adjustment and focusing capability is exceptional for applications such as floating ceilings and wall mounted pelmets in order to achieve the desired effect. This adjustment can be completed onsite without any specialty tools.

As a totally interconnectable system, Kove LED makes installation quick, simple and hassle-free. All modules are pre-assembled from factory complete with all connections and Dali drivers as standard enabling

rapid, low cost installation. The «Plug+Go» connection system houses not only the mains power but also all dimming controls wiring, therefore eliminating the need for «messy» external wiring and drivers. Up to 60 metres of product can be interconnected from one individual circuit connection.

COG LED

Cog LED is a bulletproof, IP65 rated, exterior linear projection system ideal for facade and perimeter wall grazing or highlighting. Utilising a specifically manufactured PCB designed in conjunction with Cree, this PCB provides the base for a unique LED binning mixing recipe which enables a consistent white projected light ensuring colour consistency of product into the future. These fixtures have been designed to combat significant levels of vandalism as well as harsh elements such as those experienced in the Middle East areas. Cog LED offers various beam options for ultimate light control and

application flexibility along with 150 degrees of fixture beam direction adjustment. The fully integrated fixture incorporates the unrivalled «Plug+Go» IP68 5 way connection system which enables ease of installation, housing of all control wiring as well as the ability to connect up to 60 metres of COG LED to one power circuit. These units are manufactured with Dali equipped drivers as standard. The technology partnering with CREE also enables a confident 5 year warranty program.

ENEPRO X

Enepro X is the new generation member of the Enepro downlighter family utilizing Xicato technology renowned for its industry leading colour stability over time. The Xicato technology offers a LED light engine with a 5 year warranty program on colour consistency. Enepro X is a fixed, high performance downlight family designed with a deep recessed engine for minimal glare, available

in two fixture footprints; «XS» and

«XL». Enepro X «XS» is a high performance «pocket rocket» downlight with up to 845 fixture output lumens yet a small fixture profile has been achieved without compromising the thermal management. Enepro X «XL» is a larger style, high performance downlight with a luminous output of up to 2456 fixture lumens.

Intralux luminaires offer designers through to end users a turn-key, functional lighting solution. Featuring high performance, energy efficiency and ease of installation while also offering piece of mind with factory 5 year warranty program» Intralux really provides an ideal, credible range of highly engineered products well suited to the Middle Eastern region.



Hamra Garden – Beirut

Hamra Garden is two residential tower blocks that come together to create a community, Each tower block rises 13 floors high and is home to similar and symmetrical apartments, creating a sense of harmony, balance and unity. HAMRA GARDEN has 52 apartments in total each apartment is 190 m2 With facilities of: 2 parking lots 1 depot underground Extra parking spaces for guests for the whole project.



Spaces & Concepts Lighting Design & Supply won a contract to supply and install the project Lighting units from major international companies.



Clemenceau Medical Center CMC

CMC, affiliated with Johns Hopkins Medicine International, boasts a “5-star hotel ambience” with conveniences like televisions and Internet access for its patients. A modern glass and concrete exterior is complimented with spacious interior rooms that allow for a “cozy” feeling. The interior design also allows them to use innovative medical equipment like completely

film-less digital imaging centers and real-time video conferencing equipment to connect with other physicians and specialists inside or outside of CMC.

Spaces & Concepts Lighting Design & Supply won a contract to supply and install the project Lighting units from major international companies.



SPACES & CONCEPTS www.spacesnconcepts.com
GENERAL TRADING & CONTRACTING COMPANY

RV 1090

RV1090 is the perfect combination of lifestyle and design at a prime address overlooking the Raouche rock. Living spaces within the building have been designed for those who seek privacy, quality and comfort.

Built within a uniquely landscaped area covering 4,932 sqm, this 22-floor residential tower includes 40 luxury apartments, each measuring approximately 540 sqm. RV1090 contains two lavish duplex penthouses measuring 1,000 sqm each, with open terraces and balconies overlooking the corniche. Every apartment includes a spacious private balcony and has been designed around the concept of serenity and comfort. The design has been oriented around water and light, offering views of the Mediterranean Sea and entry of natural light.

Spaces & Concepts Lighting Design & Supply won a contract to supply and install the project Lighting units from major international companies.



Caroline Ezzedine -interior architect



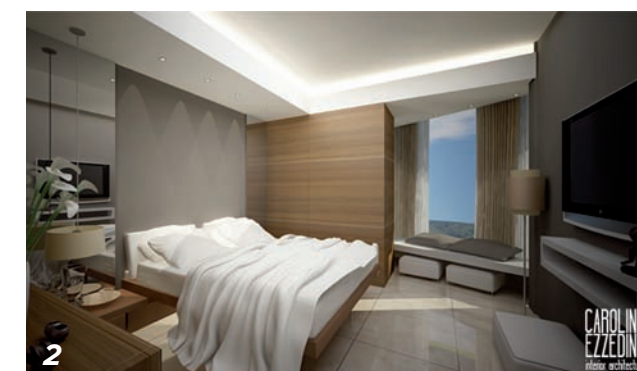
Half French half Lebanese, Caroline is a young interior architect based in Beirut. She studied at l'Academie Libanaise des Beaux-Arts (ALBA), where she graduated with distinction.

Her work stands out in the way it reflects the duality of her origin, a mix of both European and Mediterranean cultures. Over the past two years, Caroline has designed tasteful interior spaces of all kind in Lebanon and the Middle-East, from restaurant chains to private residences, including hospitals and commercial offices.

Alongside the designing process of her studio in Ain Al Remaneh, she is currently working on projects between Beirut and Tyre, her hometown, constantly exploring new concepts resulting from her own experiences and searching for ideas to make people live better.



1. Triplex residence- Mechref
2. Apartment - Achrafieh 693
3. Entrance - Achrafieh 1777
4. Ophtalmology clinic - Tyre
5. Apartment - Achrafieh 1777



A Quarterly Newsletter published by SPACES & CONCEPTS
GENERAL TRADING & CONTRACTING COMPANY

SPACES & CONCEPTS Co.-Decoration and Furniture Department

THE KUWAIT UNIVERSITY CITY (KU City)

The Kuwait University planned to develop the Kuwait University City (KU City), a educational complex in Shadadiyah, 20 km west of Kuwait City. KU City is spreading over a 6 million m² area. It consists of three campuses including 16 colleges and support faculties, a hospital, a hotel, a housing complex, sports facilities, auditoriums and so forth. The new University City will be constructed based on the requirements of the segregation policy with two adjacent campuses, one for male students and one for female students. Male campus on the north and female campus on the south will accommodate approximately 40,000 students, integrating all colleges for arts, humanities, sciences, engineering and medical specialties.

The Administrative facilities, instructional facilities, academic facilities and student's activities will be designed based on the specific college requirements and student and staff numbers. This campus is planned to become a node for Education and knowledge destination of the future. Each of the college facility is designed to reflect university's commitment to develop an innovative educational environment. Sophisticated lighting and ventilation systems are integrated to be based on

sustainability principles. In terms of technology, the campus is designed to be Digital Campus, with Smart class rooms and intelligent instruction spaces.

The University development is focused on sustainability principles and the buildings are designed intuitively to provide comfort through innovative shading devices. Saving energy by design and incorporating alternative forms of energy

are explored at every stage of development. All facilities in the Campus are designed to meet international level benchmarking for 'green' design principles.

Spaces and Concepts was awarded the contract to supply and install the gypsum board ceiling, special acoustic tiles ceiling, metal ceiling, partitions and gypsum cladding, fiber cement boards cladding, as well as the painting contracts

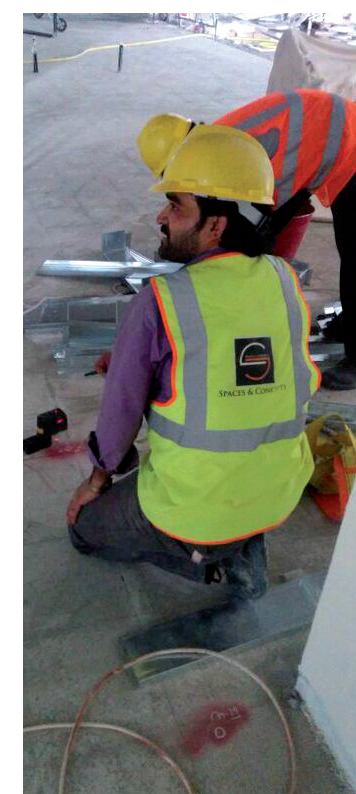
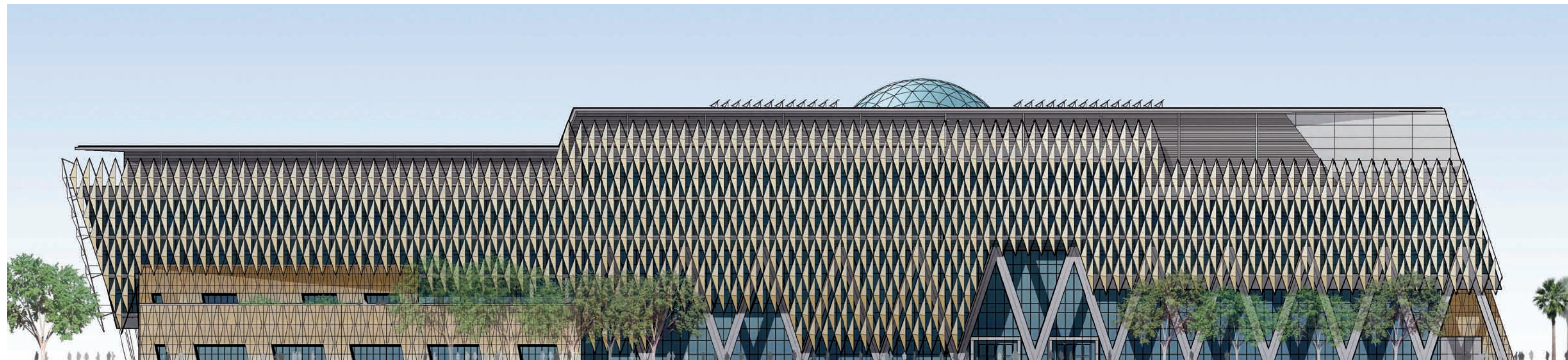
for College of Business in Men's and Women's campuses.

Spaces and Concepts will utilize its long experience in interior decoration and contracting as well as reputable suppliers for the required works in order to complete another prestigious project and add further experience to its resume.

The project will be managed directly by Engineer Ayman H. Darwish, head of

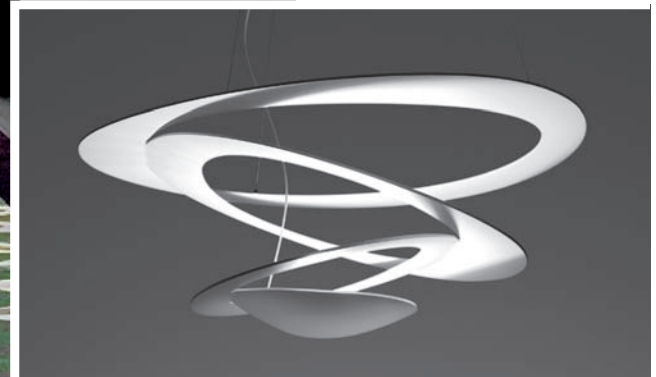
decoration and contracting department, who will be supported by office engineers, site engineers, site foremen, and company skilled labor.

Spaces and Concepts almost completed the phase of shop drawings approvals and already started with painting works on cement plaster walls. We also started supplying the material gradually after obtaining the required approvals.





Pirce



Artemide®



SPACES & CONCEPTS
GENERAL TRADING & CONTRACTING COMPANY

P.O. Box:
887 Qortuba, 73508
Kuwait

Shuwaikh Industrial Area
Suncity Complex
Building B, Mezzanine Floor
Office No. 32

t +965 22241201/2/3
f +965 24919230
info@spacesnconcepts.com
www.spacesnconcepts.com

Kuwait: P. O. Box: 887 Qortuba, 73508 Kuwait. Shuwaikh Industrial Area, Suncity Complex, Building B, Mezzanine Floor, Office No. 32. **Shoroom:** Suncity, bock E, **T: +965 22241203**
T: +965 22241201/2 | F: +965 24919230 | info@spacesnconcepts.com | www.spacesnconcepts.com Spaces.and.Concepts spacesandconceptskuwait
Lebanon - Beirut Jnah, Blom Bank Bldg, Ground Floor, Beirut **Tel.: +9611 8 4343 6 | Fax: +9611 8 4343 7**
 Spaces & Concepts Lighting Design & Supply spacesandconceptslebanon