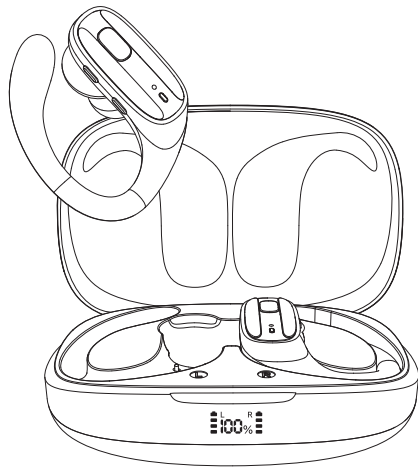


## S12 Sports Wireless Earbuds

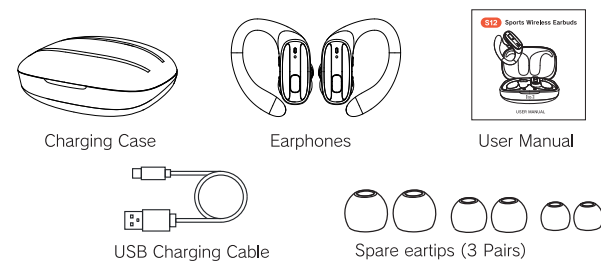


USER MANUAL

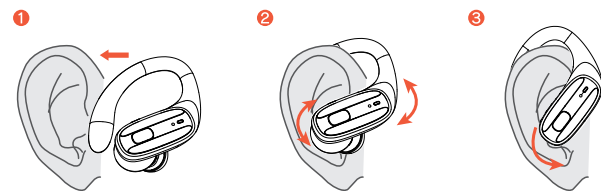
### Specification

Model :	S12
Earbud battery :	60mAh
Charging case battery :	450mAh
Frequency range :	20Hz-20KHZ
Mic Sensitivity :	-38±3dB
Bluetooth version :	V5.4
Transmission distance :	over 10 meters
Operating Temperature :	-20°C to 60°C
Max. Humidity :	90%
FCC ID :	2BBOA-S12

### Package list



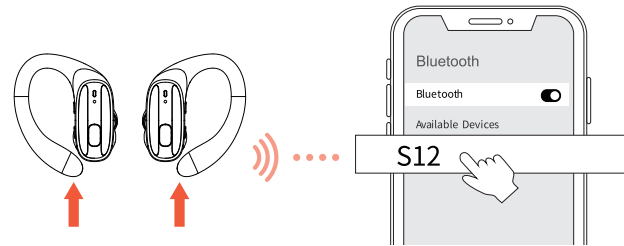
### Fitting



### Bluetooth pairing

1. Take the earphones out of the charging bin.
2. Turn on bluetooth and select "S12" in your device settings.
3. Voice prompt "connected".

Note:  
If there is a pairing record, take one or two earbuds out of the charging case, the earbuds will automatically connect to the device within 2-4s.



### Power on

**1. Automatic Activation:**  
Open the charging case, remove earbuds, and then they'll automatically power on and enter pairing mode.

**2. Manual Power On:**  
If earbuds are outside the case and powered off, you can press and hold **both** control button for 3 seconds. (LED indicator: blinks red/white)

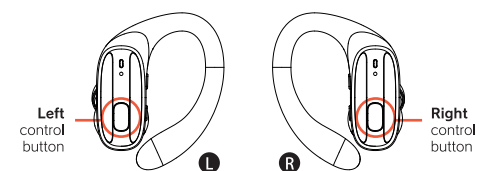
### Power off

**1. Automatic Shutdown**  
Return the earbuds to the charging case and close the lid. The earbuds will automatically power off and begin charging.

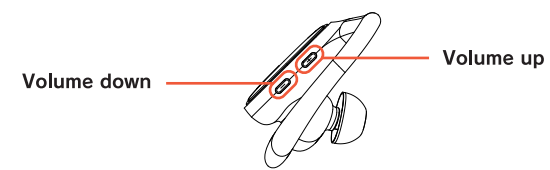
**2. Manual Shutdown**  
(1) For both earbuds: Press and hold the control button on both earbuds for 5 seconds. (LED indicator: red flashes 3 times)  
(2) For a single earbud: Press and hold its control button for 5 seconds to power it off individually. (LED indicator: red flashes 3 times)

**Note:**  
Earbuds outside the charging case will automatically power off after 3 minutes of Bluetooth disconnection.

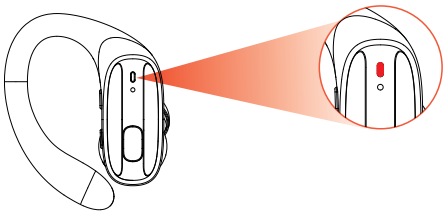
### Controls



<b>Play/Pause:</b> single tap	<b>Answer/Hang up:</b> single tap
<b>Next song:</b> double tap	<b>Reject incoming calls:</b> double tap
<b>Previous song:</b> triple tap	<b>Power on:</b> press and hold 3 seconds
<b>Voice Assistant:</b> press and hold 3 seconds	<b>Power off:</b> press and hold 5 seconds



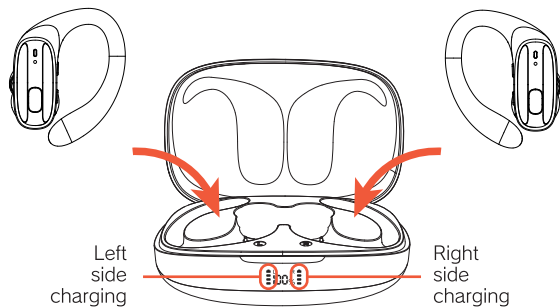
### Earbud LED Indicator



Power On :	Blinks red/white
Power Off :	Red flashes 3 times
Disconnected :	Solid white blinking
Low Battery :	Continuous red flash + voice prompt
Shutdown :	Red flashes 3 times

### Charging earbuds

1. Placing the earbuds in the charging case will power off earbuds and start charging. Progress bar animates upward from charging side.

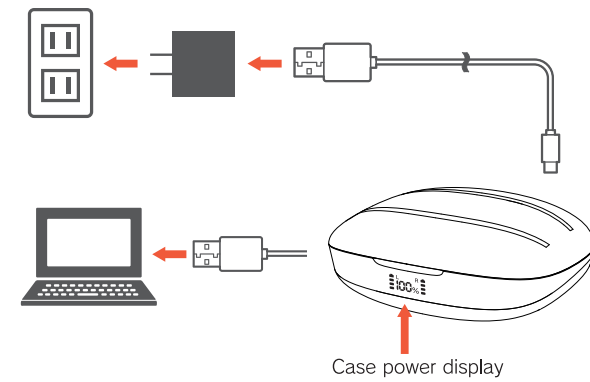


2. When the earbud is fully charged, the display will turn off.



### Charging Case

1. Plug USB-C cable into case and a USB port/power adapter.
2. Digital percentage pulses during charging (e.g., "45" blinks → "46" blinks) , 100% means fully charged



### Usage & Care Guidelines

1. Storage  
Store the earbuds in a dry, well-ventilated area. Avoid exposing them to oils, steam, or high-humidity environments like kitchens or bathrooms, as moisture may degrade performance.
2. Cleaning  
Gently wipe the earbuds with a dry, lint-free cloth. Do not use alcohol, solvents, or abrasive materials, as these may damage the microphone grilles or touch sensors.
3. Optimal Connectivity  
For best performance, keep your paired device within 33 feet (10 meters) of the earbuds. Physical obstructions (walls, furniture) or interference from Wi-Fi routers/microwaves may reduce range.
4. If connection issues occur:  
(1) Place the earbuds back in the case for 10 seconds, then remove them to reset.  
(2) Never attempt to disassemble the earbuds—this voids the warranty and may cause permanent damage.
5. Charging Best Practices  
(1) Always use the included USB-C cable or certified adapters (5V/1A output recommended) to charge your earbuds.  
(2) Maintain battery health by:  
a. Avoiding complete discharge (recharge when battery drops below 20%)  
b. Performing a full monthly discharge/recharge cycle

### Warning

This device complies with Part 15 of the FCC Rules. Operation is subject to the following two conditions: (1) this device may not cause harmful interference, and (2) this device must accept any interference received, including interference that may cause undesired operation.

Changes or modifications not expressly approved by the party responsible for compliance could void the user's authority to operate the equipment.

NOTE: This equipment has been tested and found to comply with the limits for a Class B digital device, pursuant to Part 15 of the FCC Rules. These limits are designed to provide reasonable protection against harmful interference in a residential installation. This equipment generates, uses and can radiate radio frequency energy and, if not installed and used in accordance with the instructions, may cause harmful interference to radio communications. However, there is no guarantee that interference will not occur in a particular installation. If this equipment does cause harmful interference to radio or television reception which can be determined by turning the equipment off and on, the user is encouraged to try to correct the interference by one or more of the following measures:

- Reorient or relocate the receiving antenna.
- Increase the separation between the equipment and receiver
- Connect the equipment into an outlet on a circuit different from that to which the receiver is connected.
- Consult the dealer or an experienced radio/TV technician for help

NOTE: This device and its antenna(s) must not be co-located or operation in conjunction with any other antenna or transmitter

The device has been evaluated to meet general RF exposure requirement. The device can be used in portable exposure condition without restriction.

THANK  
YOU