



# MatrixCell Bio

## BIOPRINTER

**Bioprinter** is a wireless-controlled bio-equipment for fabrication of tissue engineering scaffolds by a simultaneous process of both homogeneous biomixing & extruding a bioink with semi-continuous feeding of bioink components.



info@matrixcellbio.com



+82(02)970-9915



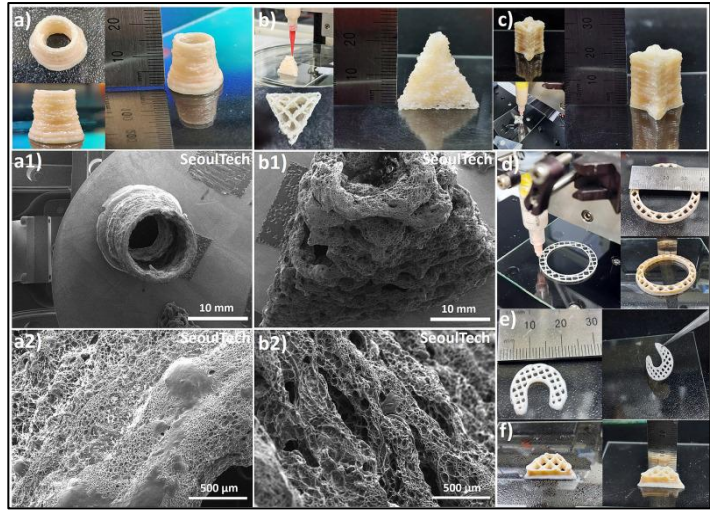
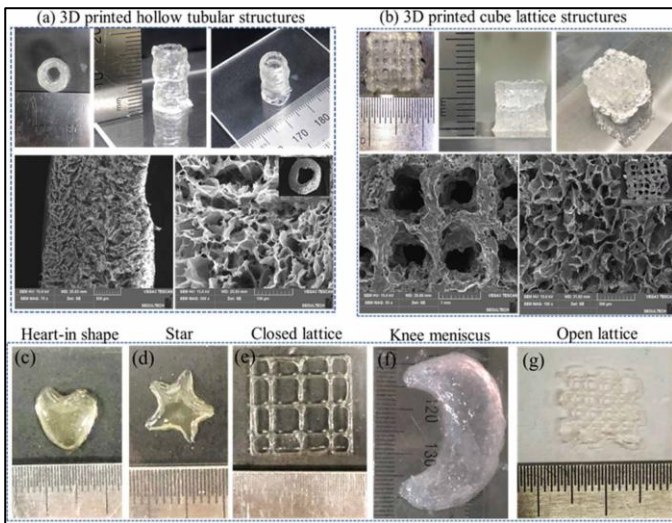
www.matrixcellbio.com



Seoul National Univ. of Sci. & Tech.,

The 2nd startup incubation center 131, Gongneung-ro 232, Nowon-gu,  
Seoul 01811, Republic of Korea.

## AND APPLICATION



### 3D-printed samples & SEM images

Hollow tube(a); lattice structure(b); star(c); large circular area(d); knee meniscus(e), & trapezoidal prism(f).

Hollow tube (~100 layers), porous cube (~50 layers), star, heart-in, meniscus and lattice).

## Bio and biomedical applications

Homogeneous bioink deposition for:

- *In situ* biomixing & 3D bioprinting.
- Precision fabrication of tissue engineering scaffolds with homogeneously mixed bioink printing.
- High precision bioprinting.
- Biopen-integrated bioprinter.
- Good for complex 3D architecture developments such as cartilage, bone, skull and skin tissues.



Total weight (g) without syringe	Height
24 kg	470 mm