

CALLING ALL ANTIQUE
& COLLECTING
ENTHUSIASTS!

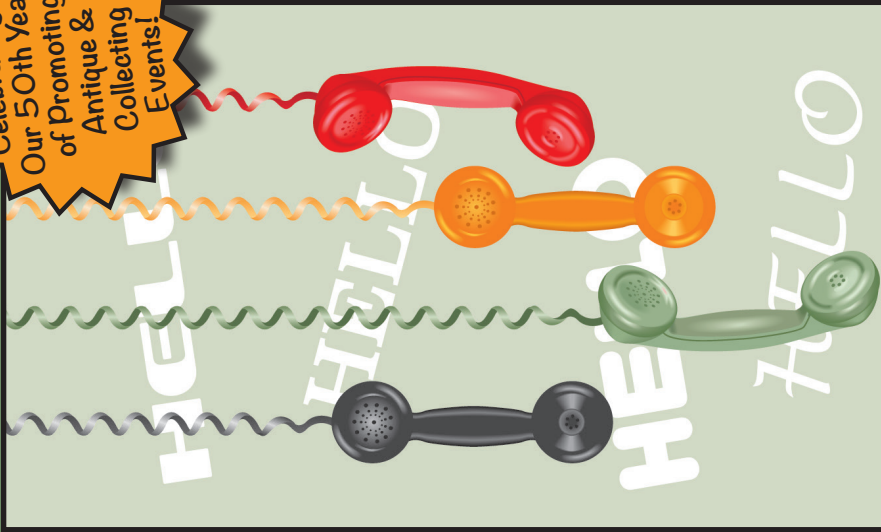
SPREAD THE WORD...

A 1-YEAR SUBSCRIPTION TO
YESTERYEAR IS JUST
\$22!

OR, SAVE ON A 2-YEAR
SUBSCRIPTION FOR JUST \$40!

Each Month You'll Get the Best
Regional Listings for Upcoming
Antique Shows, Flea Markets,
Festivals & Art Fairs -
Plus Columns by Experts on
Vintage & Collecting!

Celebrating
Our 50th Year
of Promoting
Antique &
Collecting
Events!



YESTERYEAR

(Use this coupon or a reasonable facsimile)

YES! I want to subscribe to Yesteryear!

- ☐ Send me one year (12 issues). Enclosed is \$22
☐ Save a few dollars...2 years (24 issues). Enclosed is \$40

This subscription is...

☐ NEW ☐ RENEWAL ☐ A GIFT

NAME _____

ADDRESS _____

CITY _____ STATE _____ ZIP _____

Mail to: Yesteryear Publications • PO Box 306 • Montello, WI 53949
Please allow 4-6 weeks for delivery of first issue

No. 604 • SEPTEMBER 2025 • \$ 1.50

YESTERYEAR



Celebrating
Our 50th Year of
Promoting Antique
& Collecting
Events!



LOOK INSIDE TO FIND.....Listings for Upcoming
ANTIQUE SHOWS, FLEA MARKETS, FESTIVALS & ART FAIRS
Plus Columns by Collecting Experts!



Kovels: Antiques and Collecting

By Terry & Kim Kovel



All we know about Louis Thompson comes from his artwork. He made mixed media pieces that often reference American history, like this wall sculpture that incorporates china from Mount Vernon. Photo Credit: Alex Cooper Auctioneers

Sometimes, all we know about an artist from the past comes from their artwork. This is especially true of folk and outsider artists; collectors are often lucky to know their names. Fortunately, artist Louis E. Thompson signed and dated his works, like the mixed media wall sculpture shown here, made in 1932, that sold for \$343 at Alex Cooper Auctioneers.

Several other pieces by Thompson sold at the same auction, providing an overview of his art style. They included similar relief wall sculptures painted gold, multicolor mixed media figures painted in patterns, and scenic pictures on board in painted frames decorated with small figures.

Thompson lived from 1894 to 1963, spent his life in Maryland, and worked as a teacher. Other than that, his life is largely a mystery. His art fits into folk art traditions; for example, it is typically mixed media, indicating that he used whatever materials were available. Painted pieces usually have flat areas of color without shading. Some of his works have Christian imagery, like figures of saints or pictures of churches. References to American history are another frequent subject. Thompson depicted scenes of historical sites or events and created images based on Native American art.

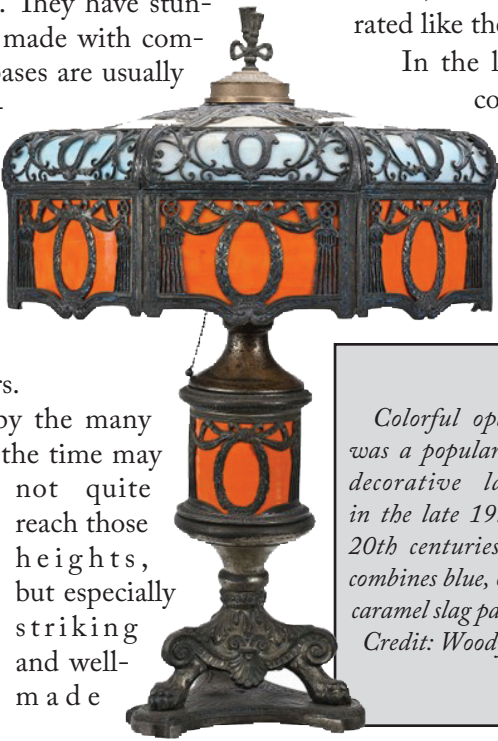
Gold-painted eagles, like the carved and gilded finials seen on fine Federal furniture, appear on frames and wall sculptures. According to a note on the back of this wall sculpture, the china fragments incorporated into it are from Mount Vernon, George Washington's plantation. Archaeological excavations there began in the 1930s, about the time Thompson made the sculpture.



The invention of the electric light bulb didn't just introduce an improved, more convenient, safer light source. It gave designers new inspiration. As the use of electric lights spread during the late 19th to early 20th centuries, lamps with colorful opaque glass shades became popular. They made beautiful decorations, whether on or off, and the intense electric light shining through the glass often gave the design a whole new look.

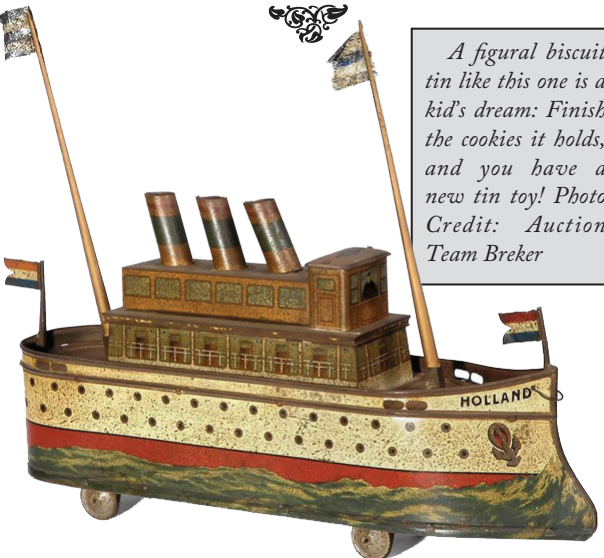
Tiffany, Handel, and Pairpoint made the most famous lamps of the time. They have stunning, high-quality shades made with complex techniques, and the bases are usually bronze and often have intricate designs or figural shapes. Unsurprisingly, they can sell for tens or hundreds of thousands of dollars today -- a windfall if you've inherited one but a bit of an extravagant purchase for most collectors.

Similar lamps made by the many other companies active at the time may



Colorful opaque glass was a popular choice for decorative lampshades in the late 19th to early 20th centuries. This one combines blue, orange and caramel slag panels. Photo Credit: Woody Auction

examples can still sell for impressive prices, even without a known maker. Even though its maker was not identified, this lamp sold for \$3,000 at Woody Auction. Its light blue, orange, and caramel-colored glass panels make an eye-catching combination, especially with the ornate scrolls, wreaths, and flowers on its metal frame. A lighted base adds to its appeal.



A figural biscuit tin like this one is a kid's dream: Finish the cookies it holds, and you have a new tin toy! Photo Credit: Auction Team Breker

Biscuit tins, first made about 1830, were some of the earliest commercial food packages. The first tin toys were made about the same time. It wasn't too long before clever designers found ways to combine the two. Tin packaging with colorful images always caught customers' attention, and, while fashionable art styles and scenes of foreign countries appealed to adults, children were drawn to tins shaped and decorated like their favorite playthings.

In the late 19th to early 20th centuries, many companies packaged their products in tins shaped like buildings, vehicles, animals, and human figures. Some packages had moving parts, just like the mechanical tin toys of the time.

This biscuit (cookie) tin, made by Dutch company J. Bekkers & Zoon

about 1920, is shaped like a steamboat marked "Holland," complete with stacks, flags on masts, and lithographed details on the decks. The upper deck opens. It was evidently intended to double as a toy; there are runners on the base, so a child could push it along the floor and pretend it was on the water. It even has a lithographed wave for added realism. Tin toys and tin packaging are both highly collectible today. This tin, which fits both categories, sold for about \$935 at an auction by the German company Auction Team Breker.



The Uff da! Sign Store

Ya Ya! You Betcha!

STORE CLOSING SALE 10% OFF EVERYTHING!

After having a store for 17 years, we decided to retire near the end of this year and close our store. We look forward to finally spending a few weeks in a warmer climate this January!

Thanks to all our great customers!
Lori & Russ

COUPON
20% Off
Everything in the Store!
Coupon expires 9/30/2025
Only one original coupon per visit.
Coupons cannot be combined or copied.

COUPON
25% Off Everything
in the Store with \$100+ Purchase!
Coupon expires 9/30/2025
Only one original coupon per visit.
Coupons cannot be combined or copied.

Open 10-4
7 Days a Week

715-298-9339 • www.uffdahh.com
1103 East Grand Ave, Rothschild, WI 54474
Near Wausau, Just off Hwy 29,
Between Harbor Freight & Ollie's

CIVIL WAR & MILITARY EXTRAVAGANZA

2025 • CHICAGOLAND • NATIONAL

SATURDAY
SEPTEMBER 20

9am to 4pm / \$10 • Early Buyer 8am / \$25 • Free Parking
1,000's of Civil War Treasures! Plus!
Revolutionary War • Spanish-American War
Indian Wars • Mountain Men • Bowie Knife
Collector Arms • Fur Traders • World Wars I & II
Zurko Promotions 715-526-9769
www.ChicagoCivilWarShow.com

DuPage Co. Fairgrounds
2015 W. Manchester • Wheaton, IL 60189

Q: Can you help me identify an unusual piece of framed art? It is made of cloth and depicts a scene of game birds in a forest. Parts of trees surround the edges, making it look like a repeating pattern. The designs are slightly raised. It is not signed. What is its value?

A: It sounds like your artwork is an example of trapunto, a type of quilting where the outline of a shape is stitched on fabric, and padding inside the outline gives it a three-dimensional effect. Trapunto is an ancient technique, with surviving examples dated to 14th-century Italy, and it has been practiced worldwide. It became fashionable in the mid-20th century, both as a decoration and as a hobby. Hobbyists could buy kits with printed fabric. They sewed around the printed design and quilted it.

Fabric art like yours was made similarly and probably from about the same period. Outdoor scenes and animals were popular subjects; in addition to game birds, we have seen similar trapunto panels with fish, deer, or hunting dogs in the wilderness or with horses in a field. Today, these panels are often sold as “rustic” or “Adirondack” style decorations. Sometimes, they are incorporated into rustic-looking furniture. Large panels, about 20 x 25 inches, generally sell for \$75 to \$100.

Q: Our handpainted Nippon chocolate set, including a pitcher and five cups and saucers, has been in our family for over 60 years. It is decorated with roses and gold and has a blue mark on the base with a leaf. We are wondering what it is worth so that we can list it correctly in our estate.

A: The leaf mark was used by the Morimura Bros., who opened their trading company in 1876. In 1904, they founded the company that was later known as Noritake, one of the most famous names in 20th-century Japanese ceramics. Morimura and Noritake used the maple leaf mark with the words “Nippon” and “Hand Painted” starting in 1891. The mark could be blue, green, or magenta. Nippon chocolate sets the size of yours, with the blue leaf mark and similar decorations, have sold for about \$150 to \$300 at recent auctions.

For a more precise estimate, you may want to contact a collector’s club, like the International Nippon Collector’s Club (nipponcollectorsclub.com), or an auction house or dealer that sells similar ceramics. To list the value of your estate, you may need to get a professional appraisal; however, they tend to be very expensive and may not be necessary if the value of the item is under a certain amount.

Q: I have inherited two autographed pictures of former President Harry S. Truman. One is in glass and the other is not. President Truman offered to sign these pictures for my cousin, who was a friend of his. They were signed after President Truman left office. Both pictures are in good shape. The one in glass measures 26 x 21 inches inside a 43 x 33-inch frame. The one without glass measures 21 1/2 x 25 1/2 inches in a 25 x 31 1/2-inch frame and is signed on the back. What is the best way to sell these pictures other than eBay?

A: There are several ways to sell autographed materials. Antiquarian book dealers sell them. So do some coin or stamp dealers. They also sell at general antique stores and auctions. Look for a dealer in your area. If you cannot find an appropriate one, you may want to contact an out-of-town dealer or auction house that specializes in historical materials; paper collectibles like photographs, prints, and books; or political collectibles. Autographed pictures of President Truman have sold for about \$150 to \$300 at recent auctions.

TIP: Very dirty lacquer can be cleaned with a paste of flour and olive oil.

Q: I have many items from an estate, like plates, paintings, records, Hess trucks, and Hummels, and I don’t know what to do with them. How can I find a buyer?

A: Settling an estate is always a daunting task. There are many ways to sell collections, such as through a liquidator; with a house or garage sale; taking your items to a consignment shop; or selling them online. If you have some valuable items or a large specialized collection, you may want to contact an auction house or antiques dealer. For example, Hess trucks from the 1960s in good condition, and with their original packaging, can sell for hundreds, even thousands of dollars. If you have any, you may want to contact a dealer or auction house specializing in toys.

Individual Hummel figurines usually sell for low prices unless they are very early (crown or full bee mark), very rare, or unusual, such as international or jumbo figurines. A local library or art museum may have access to databases where you can look up the values of your paintings. If you cannot identify the artists, a museum or art gallery may be able to help you. There are websites like Discogs (discogs.com), Goldmine Magazine (goldminemag.com), and Money Music (moneymusic.com) where you can look up the values of your records.

You can also contact collectors’ clubs to find out more about your collections, connect with potential buyers or dealers, or find out about shows or other opportunities to sell. Kovels.com and AntiqueTrader.com have more articles with detailed information on selling collections, as well as directories where you can look up relevant businesses and clubs.

Remember, if you decide to do business with an auction house, consignment store, dealer, auction house, or anyone else, do your research and take precautions. Get references and reviews, make sure you know about any fees, and always get a signed copy of any agreement.

Q: I have a chair that I found in an antique store. There is a maker’s mark on the bottom from the Heyman Company from Grand Rapids, Michigan. I can’t find any other chairs from them online, so it appears to be rare. I know it was made in the late 1880s, because that is when they were in business. The seat has fabric upholstery that looks original. There is no damage to it and there don’t seem to be any repairs done. It is in great condition. Can you give me a value on this?

A: Grand Rapids was an important center for furniture manufacturing from the late 19th to the mid-20th century. Companies mass-produced furniture in the popular styles of the time, like Renaissance Revival in the late 1800s and Arts and Crafts in the early 1900s. Because the furniture was made by machine, pieces were simpler than the elaborately carved styles of the earlier Victorian years. They had rectangular lines and flat surfaces. Oak and walnut were popular woods.

Grand Rapids manufacturers made furniture for all price points, but today, these pieces are usually inexpensive, unless they are by a famous maker like Stickley or Limbert. The Heyman Company is not as well known; we have found out little about the company other than that it was active until at least the 1940s. Grand Rapids chairs by unknown makers usually sell for about \$50 or less. A maker’s mark or label increases the value of furniture. Your chair would be worth more, probably about \$75 to \$100.

Q: My father taught Engineering Graphics at Ohio State University during the 1960s and 1970s. One of his favorite students was from India and gifted him a carved ivory chess set sometime in the late 1960s. I know ivory is controversial, but there is a “cut off” date under which it could be imported. I have two questions: 1. Does the late 1960s fall within that date? 2. Is there a way to get an appraisal value?

A: International trade in elephant ivory was banned by the Convention on International Trade in Endangered Species (CITES) in 1989. It is legal to own ivory that was imported before then. Ivory chess sets like yours have been made in India for hundreds of years. We have seen sets from the mid-20th century valued at about \$200. Sets from the 19th century can be worth more than a thousand dollars.

To get a more precise appraisal, you may want to look for an antiques dealer in your area or contact an auction house that handles ivory. Look for specialists in Asian art. If you are planning to sell your chess set, transport it across state lines or even give it as a gift, donation, or inheritance, be sure to check both federal and state laws. Federal laws regarding ivory have been updated several times in the last decade. The U.S. Fish & Wildlife Service (fws.gov) will have the latest federal laws.

TIP: When storing dishes, glassware, and especially textiles, don’t use old newspapers for wrapping. The ink will come off and may leave permanent stains.



Uff da!

Sorted and Unsorted
- Many 100+ Years Old!
States - Topics - International
Quantity Discounts up to 30%

See Them at a New Location:
**River District
Antique Mall**
420 Winton St. - Wausau, WI 54403
Open 4 Days a Week
Wed-Fri 10-5; Sat 10-3

**66,523
Postcards -
All at \$1 each!**

Uffdahhh LLC
www.uffdahhh.com
uffdahhh@aol.com



Celebrating Over 40 Years In Business! Madison’s Oldest!!

18,000 SF! More than 120 DEALERS!

Just 1/4 mile E. of Hwy. 51 in the Rolling Meadows Shopping Center
4748 Cottage Grove Rd., MADISON, WI 53716
• • • 608-222-2049 • • •

Open: Mon-Tues-Wed & Fri 10-6 • Thurs 10-8 • Sat 10-5 • Sun 11-5

BUSES & TOURS WELCOME!

Visit our website to see a sampling of items for sale!
www.antiquesmadison.com

EAGLE RIVER FLEA MARKET

Holiday Weekend! Saturday & Sunday!
August 30 & 31
Hours: 7am to 4pm / \$2

Villas County Fairgrounds
EAGLE RIVER, WI

NEW VENDORS WELCOME!
CALL: 715-526-9769
ZurkoPromotions.com



Wisconsin Flea Markets

The “Original” - 55th BIG Season:
Shawano Flea Market!
Sundays thru Oct. 5, 2025!
Special Two Day Holiday Markets:
May 24 & 25 + July 5 & 6
Hours: 7am to 4pm / \$2 • Free Parking
Shawano County Fairgrounds
990 E Green Bay St,
Shawano, Wisconsin

MERRILL FLEA MARKET
Saturdays!
May 10 • July 19 • Sept. 6
Hours 7-4 / \$2 • Free Parking
Merrill Fairgrounds
2001 E 2nd St., Merrill, WI

Union Grove Flea Market
2025 Saturdays!
May 3 • Aug. 23 • Sept. 13
7am to 3pm / \$2 • Free Parking
Racine County Fairgrounds
19805 Durand Ave., Union Grove, WI
UnionGroveFleaMarket.com

LABOR DAY WEEKEND
Eagle River Flea Market
**Saturday August 30 +
Sunday August 31**
7am to 4pm / \$2 • Free Parking
Vilas County Fairgrounds
Eagle River, WI

Visit: ZurkoPromotions.com for more information or call 715-526-9769 • New Vendors Welcome!



Kovels: Antiques and Collecting

By Terry & Kim Kovel



CURRENT PRICES

Current prices are recorded from antiques shows, flea markets, sales and auctions throughout the United States. Prices vary in different locations because of local economic conditions.

Lamp, electric, motion, Niagara Falls, cylinder shade, cast iron mounts, dome top, pierced, molded swags, three shell shape feet, marked, Scene In Action Corp., Chicago, \$50.

Game, mahjong, bone tiles, wood case, foldout front, brass mounts, two top handles, label, Mah-Jongg Sales Co. of America, San Francisco, 7 x 8 x 8 inches, \$100.

Silver-English, jewelry box, oval, lid, relief roses, Neoclassical medallions, figures, lions, torchiers, four paw feet, marked, George Fox, London, 2 1/2 x 4 1/2 x 3 1/2 inches, \$225.

Pottery-contemporary, vase, tapered base, multi-color, raku fired, signed, Joseph Woodford, 45 inches, \$280.

Carousel, horse, jumper, walnut, front hooves raised, painted, multicolor saddle and blanket, carved mane and tail, rectangular base, 47 x 55 1/2 inches, \$290.

Furniture, chair, Arts and Crafts, oak, six back slats, H-stretcher base, paddle armrests, open arms, early 20th century, 40 inches, \$350.

Dental, tool cabinet, quartersawn oak, hinged lid, pullout front, three folding shelves over 10 drawers, marked, H. Gerstner & Sons, 15 1/2 x 16 x 9 inches, \$420.

Cambridge Glass, dolphin, candlestick, ivory, uranium glass, flared scalloped cup, dome base, 9 1/2 inches, pair, \$570.

Rug, Aubusson, Napoleon III, rows of pink rose bouquets, green striped ground, linen backing, late 19th century, France, 8 feet 5 inches x 6 feet 4 inches, \$750.

Silver-American, bowl, turned out rim, scalloped, leafy scrolls, round foot, marked, Gorham, 3 x 12 1/2 inches, \$1,665.

Furniture, bench, cast iron, black marble top, pierced scrolled supports, dragons, stretcher, scrolled feet, 19th century, 17 x 24 inches, \$75.

Imari, bowl, blue and red interior, landscape, three center reserves, flowers, blue and white exterior, horses, gilt trim, 4 x 11 inches, \$85.

Auto, gas pump plate, Texaco, Fire Chief Gasoline, firefighter's helmet, red and black lettering, metal, wood frame, 20 x 14 inches, \$190.

TIP: To clean a tin toy, first dust it. If it's dirty, use soap and a little water to wash it. Be sure it's completely dry before storing, and store it in a dry place, not in the basement.

Print, Icart, Louis, "Marchande d'oranges," orange seller, young woman, seated, blue skirt, etching, aquatint, signed, frame, 19 x 15 inches, \$195.

Rug, Kazak, ivory diamond medallions, red field, midnight blue spandrels and border, geometrics, Armenian, 1950s, 5 feet 7 inches x 3 feet 8 inches, \$250.

Game, Brownie Auto Race, round board, car graphic, center spinner, tin lithograph, metal pieces, dice, Jeannette Toy Co., 10 1/2 inches, \$310.

Clock, tall case, mahogany, swan's neck pediment, painted face, sun & moon dial, inlaid door, ogee bracket feet, Paul Price, Chester, England, c. 1820, 97 inches, \$575.

Daum, vase, pate de verre, light green to burgundy, relief salamanders, leaves, fruits, flared, short pedestal foot, signed, 6 x 5 1/2 inches, \$896.

Watch, hunting case, repousse, leafy scrolls, crown, beaded trim, 14K gold, c. 1900, 1 3/8 inches, \$1,375.

Silver-American, tea service, teapot, lid, sugar and creamer, chased, all-over repousse flowers, footed, Kirk & Sons, teapot, 9 inches, three pieces, \$2,080.

Fenton, Aqua Crest, vase, milk glass, blue ruffled rim, flared, pedestal foot, 11 inches, pair, \$35.

Coverlet, jacquard, four colors, red, blue, green, cream, center flower medallion, leafy scrolling spandrels, flower and leaf borders, fringe, c. 1850, 96 x 88 inches, \$65.

Nippon, vase, painted landscape, moriage trim, stylized flowers, swags, wreaths, scrolling handles, flared lip, red rim, M in wreath mark, 12 inches, \$95.

Copper, planter, globular, flared lip, hammered body, brass mounts, three shaped handles, paw feet, Arts and Crafts, England, William Soutter & Sons, 8 x 10 inches, \$140.

Furniture, washstand, pine, arched gallery top, shaped apron, frieze door, turned legs, shaped lower shelf, 40 x 34 1/2 inches, \$255.

TIP: When changing an antique, like rewiring a lamp or reupholstering a chair seat, keep the old pieces and parts you remove. When you sell your antique, the new owner will pay more if the old parts are part of the history.

Toy, Ferris wheel, Hy-Lo, six baskets, multicolor, orange center, wood spinner, tin lithograph, Buffalo Toys, early 1900s, 15 1/2 inches, \$265.

Coin-operated, trade stimulator, Ginger Cigarettes, three reels, 1 cent, round plate on front, woman with cigarette, wood base, 12 x 8 inches, \$375.

Imperial Glass, Free Hand, vase, orange, blue pulled loops, iridescent, flared rim, tapered base, cobalt blue rim and foot, 11 inches, \$780.

Candelabrum, six-light, gilt bronze, parrot finial, head turned, wings spread, all-over scrolls and flowers, three scrolled feet, France, 26 inches, pair, \$1,280.

Furniture, chair set, Sheraton, tiger maple, carved rope twist crest, pierced splat, cane seat, stretcher base, French feet, early 1800s, 33 inches, four pieces, \$2,640.

Advertising, tip tray, Wolverine Supply & Mfg. Co., scenic graphic, factory, yellow ground, red rim, tin lithograph, 5 x 6 1/2 inches, \$55.

Lampshade, gold iridescent glass, painted scene, trees, water, c. 1900, 12 1/2 inches, \$75.

Opaline glass, cologne bottle, blue, stopper, enamel, flowers, leaves, berries, gilt trim, silver plate holder, pierced leafy vine, dome foot, repousse flowers, Meriden, Victorian, 9 inches, \$145.

Sports, baseball, figure, Willie Mays, San Francisco Giants, holding glove, Major League Baseball Stars, box, Hartland, 1950s, \$195.

Enamel, vase, multicolor, birds perching on leafy branches, cherries, tapered base, dome foot, cobalt blue trim, art nouveau, France, c. 1900, 5 1/2 inches, \$225.

Paper, book, "A Tale of Two Cities," Charles Dickens, illustrated, hardback, green boards, gilt lettering, T.B. Peterson & Bros., Philadelphia, 1859, 9 x 6 inches, \$510.

Textile, panel, lace, pictorial, Classical style scene, dancers, Pan playing flute, scrolled borders, frame, 13 1/2 x 17 1/2 inches, \$65.



Kovels answers readers' questions sent to the column. Send a letter with one question describing the size, material (glass, pottery) and what you know about the item. Include only two pictures, the object and a closeup of any marks or damage. Be sure your name and return address are included. By sending a question, you give full permission for use in any Kovel product. Names, addresses or email addresses will not be published. We do not guarantee the return of photographs, but if a stamped envelope is included, we will try. Questions that are answered will appear in Kovels Publications. Write to Kovels, Yesteryear, King Features Syndicate, 628 Virginia Dr., Orlando, FL 32803 or email us at collectorsgallery@kovels.com.

FOX CITIES ANTIQUE GUIDE

With over 150 Vendors in one well-lit single story building, you can spend hours grooving to the great music and walking down memory lane.

Layaway & Shipping options available

Major Credit Cards accepted

Snacks

Clean Restrooms

MEMORIES

ANTIQUE MALL

POP CULTURE • VINTAGE • COLLECTIBLES

LITTLE CHUTE, WISCONSIN

THE

AUCTION HOUSE

at Memories

400 Randolph Drive • Appleton, WI 54913

920-788-5553

Open Daily 10 - 6

Call for Holiday Hours

Follow us on Social Media!

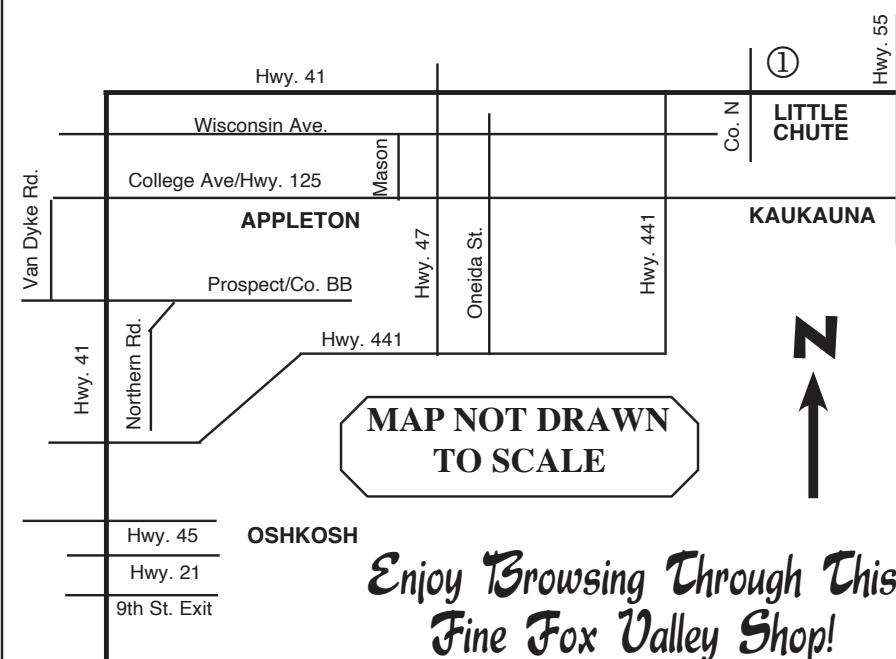
Celebrating 30 Years 1994-2024

4000 sq ft Auction House Available for Rental

Two Professional In-House Auctioneers

Occasional and Seasonal LIVE and ONLINE Auctions

See Facebook for Upcoming Events





Rinker On Collectibles

BY HARRY L. RINKER

To Infinity and Beyond: 30 Years and Still Going

(This column was released in December 2016)

“Rinker on Collectibles” was nearing its ninth anniversary when Walt Disney’s “Toy Story” premiered in general release on November 22, 1995. I researched the date because I was concerned that younger readers may not be familiar with “To Infinity and Beyond.” It is a generational phrase, meaning it has a limited memory span. I still remember the blank look on my university students’ faces when I used the phrase “Go ahead, make my day” (“Sudden Impact,” 1983) in one of my classes a few years past.

“Rinker on Collectibles” Column #1560 marks 30 years of published, numbered columns – 780 question and answer columns and 780 text (think piece / editorial) columns. The anniversary number date is deceptive. In the first decade of “Rinker on Collectibles,” I wrote several unnumbered, special edition columns and have vague memories of skipping a week or two. I made a mistake by not assigning a publication date to each column. I still follow the non-dating practice because the publication process for a column ranges from a week to a month depending upon the publication or website in/on which the column appears.

When I wrote Column #1040, I resolved to keep going for five years. Column #1300 arrived quicker than expected. At the time, I decided to end “Rinker on Collectibles” with Column #1500. When I reached that milestone, I realized I was only 60 columns away from a thirtieth anniversary column, only a year and two months in the future. I had time to decide “Rinker on Collectibles” long-term future.

When I wrote Column #1300, I shared my desire to keep writing so I could document three trends impacting the antiques and collectibles field: (1) the trade’s recovery from the 2008-2009 Great Recession, (2) the changes caused by the digital age, and (3) the increasing demise of traditional collectors and the price impact their collections would have when they enter the secondary market. I visited these topics on multiple occasions.

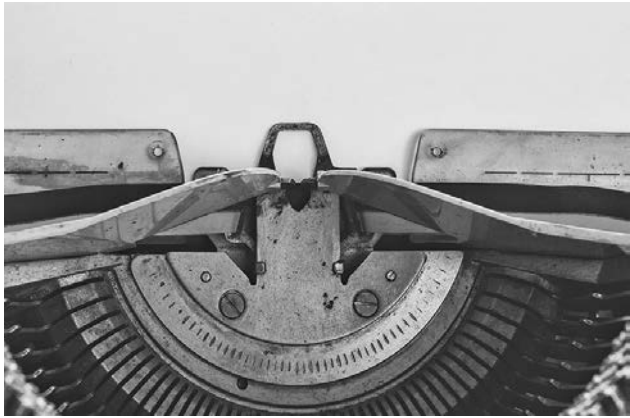
By 2011, it was evident that change rather than preservation of the status quo was the engine driving the antiques and collectibles trade and society as a whole. These new changes were unlike any previously experienced. The rapidity of change required analyzing and interpreting it monthly rather than semi-annually or quarterly.

I have no plans to end “Rinker on Collectibles” with this column. Like the Energizer bunny, I am going to keep going. I am not setting future number goals. Column #1600 is a given. Column #1700 is not, nor is #1820 (35 years), #2000, or #2080 (40 years).

[Author’s Aside: It is a common practice among cartoonists to take a temporary leave of absence for six months or a year. I have toyed with this idea on several occasions. Many current readers have never read my earlier columns. It would not be difficult to pick 26 or 52 of the best and run them again. I shared this possibility with my editors. Everyone agreed to the concept. Tempted though I was, I have too much pride to rely on past efforts. “Rinker on

Collectibles” always has been fresh and will continue to be as long as I write it.]

When I started “Rinker on Collectibles,” I was one of the young bucks in the trade. In truth, I was approaching my 45th birthday. Although a dedicated accumulator, the term collector never applied to me, from an early age, I spent 15 years as a museum professional and did some appraising during the previous five years. I became directly involved in the antiques and collectibles trade when I assumed the editorship of “Warman’s Antiques and Their Prices” in 1981. I often speculate what my antiques and collectibles career would have been like had I started in the trade in my mid-20s. Although a moot point, I suspect I would have become an auctioneer or dealer rather than an educator and researcher.



I am a rarity, a term I would prefer not to use but understand its appropriateness in this instance, in the antiques and collectibles business. I sell information about antiques and collectibles and not objects. I use my time to research and learn the trade’s many histories—from biographies of the great auction houses, dealers, and collectors to the creation, production, marketing, and survival of objects. The antiques and collectibles trade is not comprised of inanimate objects as most assume. Antiques and collectibles are animate objects whose life force is understood by a select few, of which I count myself as one.

“Rinker on Collectibles” is about what I think. It has never been about what I want my readers to think. I expect readers to make up their own minds. It does not take readers long to understand that I am opinionated, a bit arrogant, and as my license plate reads a “NOITAL.” I make no apologies. My recommendation to a person who does not like to know what I think is simple. Do not read “Rinker on Collectibles.”

I am proud that “Rinker on Collectibles” usually is ahead of the curve in identifying and analyzing trends in the antiques and collectibles trade. Accused on occasion of setting market trends, if only I possessed such power, I write “Rinker on Collectibles” as a reporter and not as a soothsayer.

As I continue to age, I cannot avoid reflecting on my many accomplishments in the trade. “What is your greatest accomplishment” is a question I prefer to avoid. “Rinker on Collectibles” appears to be the obvious answer. I am not ready to validate such an assertion. I am proudest of the people in the trade who

I have influenced. “Rinker on Collectibles” is only one of the many vehicles available to me to achieve this.

I resolved not to brag too much about “Rinker on Collectibles” when I began to write this column. However, there are four concepts behind the column of which I am very proud. First, every question used in the 780 question and answer columns was an actual question submitted by a reader. I never made up a single question. Second, my answers to questions were education focused, providing background information and explaining market trends that governed the prices presented. Third, I avoided repetition as much as possible in the text and question and answer columns. Finally, I developed a number of general theories to explain how the antiques and collectibles trade works. Although my writing is more qualitative than quantitative, I stand behind the conclusions I reached through extensive observations in the field and reading trade literature.

“Rinker on Collectibles” has continued for 30 years thanks to the support from a large number of people. First, I want to thank my readers—from those who are new to those who have followed the column for decades. I like to think there are some who were there at the beginning. “Rinker on Collectibles” always has been focused on educating and challenging its readers to think. I have never met any reader who said, “I agree with everything you have written.” If there is such a reader, I failed.

Second, I thank the editors and publishers who made and make “Rinker on Collectibles” available. My instructions to these individuals has not changed since I wrote my first column: “I write each column for me. Edit and change what you like. If you do not like a column, do not run it.” Many editors and publishers became friends. Some of my saddest moments occur when one of these friends leaves the profession.

Third, I reserve special thanks for Dana Morykan, my proofreader and critic of “Rinker on Collectibles” for over 25 years. Dana has caught more mistakes than I care to remember. Her “is this really what you mean” and “maybe you should think more about this” comments always make columns better. In respect for Dana, there are times when she does not agree with my opinions but faithfully proofs the column anyway. It is my hope she will continue her work until I write the last “Rinker on Collectibles” column.

After writing Column #1300, I wrote a series of columns identifying ten top changes that took place in the trade between Column #1040 and #1300. I will do the same for the first “Rinker on Collectibles” columns in year 31.

I conclude with a promise. “Rinker on Collectibles” will continue to provide the same high quality information and analysis evidenced through its first 30 years. By doing this, I hope to continue earning your confidence and support in the future.

(Editor’s Note: Mr. Rinker retired from writing new columns at the end of 2021)



QUALITY • INTEGRITY • SERVICE • APPRAISE • BROKER

Janet's Antiques

ACGA, NADA

608-238-3300

Open Mon.-Sat. 11-7

Janet's UNIVERSITY
3800 University Ave.
Madison, WI

HWY. 12 & 18

BUY & SELL • MADISON'S OLDEST ANTIQUE SHOP

TOMAH ANTIQUE MALL

www.tomahantiquemall.com

1510 Eaton Ave.
I-94 & Hwy. 21-East
Tomah, WI 54660
1-888-757-0044

Jewelry, Coins, Furniture, Paper, Primitives, Tools, Linens, Crocks, Glassware, Die Cast, Collectibles, And More...

Dealer Space Available
Booth or Case
Call for Details

Open 7 Days A Week!
Stop in and See Us!



An Ad This Size

in YESTERYEAR can cost as little as
\$23.75 per month!
(When placed in 12 monthly issues)

And it will be read by 1,000's of dealers & collectors!

Contact us TODAY for complete details!
Ph: 608-297-7755
Email: yesteryearantiques@frontier.com
YESTERYEAR, PO Box 306, Montello, WI 53949

Green County Market Comes to Monroe's Green County Fairgrounds September 6 & 7!

The former Green County "Pickers" Antique and Flea Market now has a new name - Green County Market!

This change reflects this event's growth as they welcome a diverse range of vendors, including flea market and antique dealers, artisans, boutiques, farmers, food vendors, and more. This new identity allows them to expand and offer even more exciting experiences for the local and surrounding communities.

While the name has changed, the heart of the event remains the same - bringing together unique vendors and great finds in a vibrant marketplace. They are excited for what's ahead and look forward to growing with you!

Hours of Operation:
Saturday, Sept. 6, 2025 8:00am – 5:00pm
Sunday, Sept. 7, 2025 8:00am – 3:00pm
FREE ADMISSION

The Green County Market Vendor Application can be found on the Green County Fair website, www.greencountyfair.net.

All past vendors have been contacted via email or phone. All remaining spots will be available to new vendors. Please contact the Fair Office @ 608-325-9159 or email greencountyfairgrounds@gmail.com if you have any questions. Also, check out Green County County Market on Facebook for updates.

Please contact the Fair Office at 608-325-9159 or greencountyfairgrounds@gmail.com if you have any questions.

Your support is appreciated and they cannot wait to see you at the next Green County Market. The Green County Fairgrounds are located at 2600 Tenth St. in Monroe, Wisconsin 53566.



Mukwonago Lions Host Maxwell Street Days Flea Markets

Join the Mukwonago American Legion Post 375 at this summer's Maxwell Street Days Flea Markets, now in their 69th year!

You'll find hundreds of sellers offering a wide variety of merchandise. The flea market runs 4 weekends each summer. The final dates for 2025 will be September 13-14.

The flea market is held at Field Park, Hwys. 83 and NN in Mukwonago, Wisconsin. Hours are 8am to 5 pm each day and admission is free! Reasonable parking can be found off site.

Vendors must reserve their spaces by calling 262-363-1501 or look for more information on their website: www.maxwell-streetdays.net. You can also email: staff@maxwellstreet-days.net

Wisconsin Rummage-O-Rama Returns to Waukesha, Wisconsin

Milwaukee's best indoor flea market is back! Mark your calendars for the next show! The 2025-2026 season is starting soon for Wisconsin Rummage-O-Rama at the Waukesha Expo Center in Waukesha, Wisconsin.

Rummage-O-Rama, LLC is an indoor flea market in Waukesha County, held several times throughout the year. As one of the finest winter markets in Wisconsin, it is a tremendous draw for lovers of antiques, collectibles, toys, crafts, handmade jewelry, and more. Our huge variety of items ensures everyone will find something they'll love for years. Discover why people come from Wisconsin and Illinois to visit our flea market. We won't disappoint you.

Each show takes place on weekends, Saturdays from 9am-5pm and Sundays from 9am-4pm, for some one of a kind treasure hunting. You'll find some amazing vendors with tons to offer.

Throughout Wisconsin – and even Illinois. The Waukesha County Expo Center is located 20 minutes from Milwaukee with easy access from I-94. Take I-94 exit 294 (Highway J) south to Northview Road (Highway FT) and turn right. From there, you can find the entrance to the expo. There are three large parking areas, all accessible from Northview Road.

Waukesha Expo Center is located at 1000 Northview Drive in Waukesha (Milwaukee), Wisconsin. Admission is \$5.00 per person and there's free parking at the Expo.

Shows are scheduled for select weekends from October through April.
Upcoming dates include:
October 11-12
November 15-16
December 20-21

New vendors are welcome. Get more information on how to reserve a booth by calling (414) 481-5859 or visit: www.wirummageorama.com



Outdoor Shawano Wisconsin Flea Market 2025 – 55th BIG Season!

The Outdoor Shawano Flea Market is a massive weekly Wisconsin flea market at the Shawano County Fairgrounds with 1,000's of treasures! Look for Antiques, Collectibles, Crafts, Vintage, Mid-Century Modern, Gardening, New & Old, Advertising, Old Toys, & More.

The Flea Market takes place every Sunday starting April 27 thru October 5, 2025, except on Labor Day Weekend when the Shawano Flea Market moves to the Fairgrounds in Eagle River.

* Shawano Flea Market Fall Car Show is also Oct 5, 2025 held during the Flea Market! Car Show, Food, Music, and more!

Please follow us on x at: <https://x.com/zurkopromotions> for announcements such as flea market cancellations due to weather, etc.

HOURS: 7AM TO 4PM
Admission: \$2
Early Buyers: Before 7am: \$10
– sorry, no dogs allowed
Shawano County Fairgrounds
990 E Green Bay Street
Shawano, WI 54166

New vendors welcome!

For dealer inquiries please call Zurko Promotions at 715-526-9769 or email office@zurkopromotions.com



CHICAGOLAND'S NATIONAL CIVIL WAR SHOW & SALE

DuPage County Fairgrounds
Wheaton, Illinois • Saturday, September 20, 2025

The DuPage County Fairgrounds are the site for the semi-annual MASSIVE Chicagoland CIVIL WAR & Collector Arms (CADA) Show and Sale. The DuPage, IL, Civil War Show will bring delight to the Civil War Enthusiast.

Show hours are from 9am to 4pm. General admission is \$10.00 and parking is free. Kids 16 & under are free. Early Buyer Admission: \$25.00 at 8am.

Civil War dealers from throughout the United States will be offering 1000's of Civil War Treasures and Memorabilia for sale! The history of America's Great Heritage can be viewed on the hundreds of tables of unique artifacts offered for sale.

"You may purchase a real treasure of American History for yourself or a loved one to be passed down as a great family heirloom," states Bob Zurko of Zurko's Midwest Promotions.

A special display of CIVIL WAR cannons and artillery will also be there for viewing.

For additional information contact: Zurko's Promotions, 715-526-9769 or email at office@zurkopromotions.com. Visit us online at: chicagocivilwarshow.com or on Facebook at: National Chicago Civil War Show & Sale - Wheaton, IL

DuPage County Fairgrounds
2015 W. Manchester Road
Wheaton, IL 60189

Save the Date: November 7-9 for the Fall Antique Spectacular Vintage Market ~ QCCA Expo Center, Rock Island, IL ~

(Rock Island, IL/Quad Cities) Save the date for the Fall Antique Spectacular, November 7-9, 2025, returning to the QCCA Expo Center, 2621 4th Avenue, Rock Island, Illinois.

This annual Fall antique and vintage market, in its 31st year, will feature an outstanding line-up of antique vendors with antiques & vintage items galore at Antique Spectacular. The QCCA Expo Center will be bursting with a wonderful variety of fine antiques and vintage collectibles for sale. Featured will be select antique vendors with unique merchandise from around the world. Hunters of vintage will have an opportunity to shop the wide range of quality antiques and vintage collectibles.

With the Antique Spectacular, there is always something to interest every decorator and collector, whether they have a new interest in vintage & repurposed for decorating their home or have been collecting antiques for years. This includes great furniture, art, art pottery, country, stoneware, books, prints, primitives, jewelry, silver, antique glassware, American Indian items, china, postcards, coins, quilts, dolls, toys, paper ephemera, advertising, marbles, vintage clothing, textiles and period pieces. The list of amazing vintage items is endless and all under one roof for the convenience to shop all weekend, for a timeless vintage treasure, that is new to you.

Antique Spectacular Vintage Market ~ November 7-9, 2025
QCCA Expo Center, 2621 4th Avenue, Rock Island, IL 61201
Friday, 4 - 8pm; Saturday 10am-5pm; Sunday 10am-3pm

\$10 Admission (Good all weekend with a wristband or handstamp to return) and Free Parking

Patrons can check out and register on the website: www.antiquespectacular.com to print a \$1 off admission coupon.

More information about the Antique Spectacular is available at www.antiquespectacular.com or contact Kimberly Schilling at 712-326-9964 or kim.aspectacular@gmail.com. The Antique Spectacular is presented by Melting Pot Productions, Inc.

Enjoy a Day of Flea Marketing & Fun in Princeton, Wisconsin!

The Famous Princeton Flea Market

Princeton, Wisconsin
Every Saturday in the City Park • 6 am – 1 pm
50th Anniversary!! April 19 to October 11, 2025

Join the fun all season long at the Princeton Flea Market. A destination in itself, Princeton's Flea Market is the largest outdoor flea market in Central Wisconsin. Enjoy a Saturday stroll in Princeton's City Park on Hwy 23 to browse through hundreds of vendor goodies. The treasures abound every week as new vendors enter the mix, so make it your weekly stop to find that long sought after item or just to get a tasty snack at the food stand.

Admission and parking are free and there is an abundance of great things to eat. Local service groups and organizations serve snacks, sandwiches, and beverages from the historic food stand in the center of the Park. Other vendors serve a wide variety of delectable delights including egg rolls, heavenly fresh-made warm donuts, and much more. The Information Center is also housed in the food stand.

Visit their website at princetonwi.com or see their Facebook page at Princeton WI Chamber of Commerce for more information for both shoppers and vendors.

About Princeton

Princeton, WI is centrally-located in Wisconsin just west of Green Lake. Its location on the Fox River and near the Mekan River makes it a destination for outdoor adventurers. Princeton is home to the largest outdoor flea market in Wisconsin and its downtown offers small town shopping with some of the finest urban flair goods in the state.

**"TRICK OR TREAT" A Special Exhibit at the 74th Fall
Wisconsin Antiques Dealers Association Show & Sale
October 3 & 4, 2025 (Friday & Saturday)
Waukesha (Milwaukee) Wisconsin**

By: Debbie McArdle

Catch a glimpse of the Halloween your ancestors experienced! Scary witches, howling cats, pumpkin-head figures and glowing jack-o-lanterns will highlight this exceptional exhibit, a collaboration of some of the best-known collectors in the United States. Step back in time and visit a special exhibit - "Trick or Treat" - for attendees of the 74th Fall Wisconsin Antiques Dealers Association Show & Sale held at the Waukesha County Expo Center in suburban Milwaukee, Friday & Saturday, October 3 & 4, 2025. In addition to the special exhibit, the show will host 59 antiques dealers visiting from 8 states.

Top collectors have been invited to share, from their personal collections, their treasures representing more than a century of Halloweens past. All varieties of characters, both friendly and scary, will be represented in the special exhibit displayed for show attendees as an educational, once-in-a-lifetime experience.

EXPECT THE UNUSUAL!

The antiques show will feature 59 dealers from 8 states. In addition to W.A.D.A. member exhibitors, there will be a great number of non-member participants - some from Ohio, Illinois, Iowa, Indiana, Missouri, Michigan and Minnesota - who rarely, or never, exhibit in Wisconsin. Here collectors will find a wide variety of affordable and authentic antique offerings all indoors and under one roof.

Wander the show's three large rooms providing spacious aisles and booths. Visit with knowledgeable dealers and learn more about your favorite field of collecting! Antiques spanning many centuries - from vintage holiday to jewelry to fine glass to furniture - will be found at affordable prices. Bring your appetite! Stop for a catered lunch or traditional Friday afternoon fish fry where the reputation for delicious food continues. Plenty of indoor seating is available.

The Waukesha County Expo Center's Forum Building, 1000 Northview Road, Waukesha, WI 53188, is the home of this semi-annual event. Show hours are Friday, 10-6 and Saturday, 10-4.

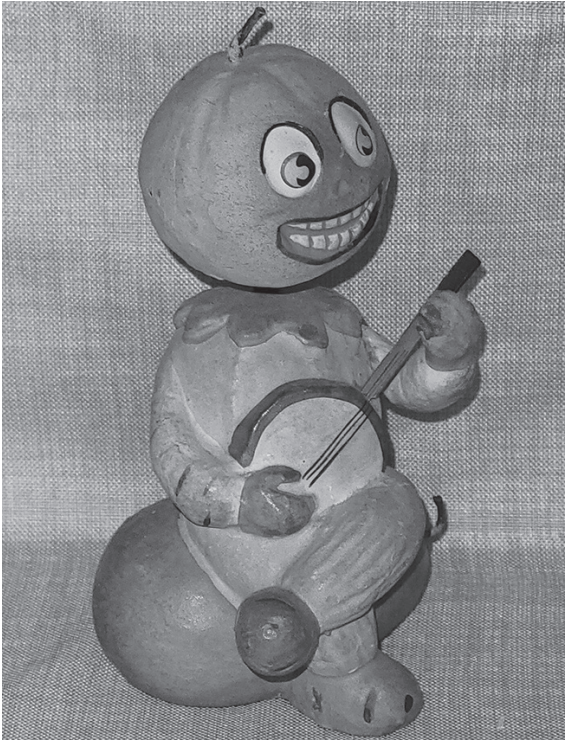
The Wisconsin Antiques Dealers Association is a not-for-profit organization that produces two antiques shows annually. Your admission of \$8.00 (good both days) funds grants benefiting Wisconsin historical and heritage groups. A \$1.00 discount coupon for admission to the Antiques Show is available with any ad or at: www.WisconsinAntiquesDealers.com. Free parking. Good food. Win a \$50 Gift Certificate! ATM on premises.

TICKETS AVAILABLE AT DOOR
WISCONSINANTIQUEDEALERS.COM



Scary witches, howling cats, pumpkin-head figures and glowing jack-o-lanterns will highlight this exceptional "Trick or Treat" exhibit, a collaboration of some of the best-known collectors in the United States.

All varieties of characters, both friendly and scary, will be represented in the special "Trick or Treat" exhibit displayed for show attendees as an educational, once-in-a-lifetime experience.



60th ANNUAL! **Marigold Days**
Antique & Flea Market
Sat. & Sun. SEPT. 6 & 7, 2025
Located outdoors in Riverside Park • Mantorville, MN
(15 miles W. of Rochester) • **ANTIQUÉ DEALERS WANTED**
For more information contact: Marigold Days Antique Show,
P.O. Box 202, Mantorville, MN 55955 • 612-940-3107
marigoldvendor@gmail.com • www.MarigoldDays.com

Upcoming Show: **FOND DU LAC LIONS FLEA MARKET**
Sunday, September 14th, 2025
8am-2pm • Fond du Lac Co. (WI) Fairgrounds
Collectibles - Crafts - Rummage Merchandise - Cottage Businesses
ALL VENDORS WELCOME - INDOOR & OUTDOOR BOOTHS
920-204-6864 • fonddulacions.org

ANTIQUE CENTER OF LACROSSE
Featuring a Full Line of Antiques & Collectibles!
75 BOOTHS ON 3 FLOORS!
110 S. 3rd St. - Downtown LaCrosse, WI
Open Mon-Sat 9-5:30 • Sun 11-5:30
608-782-6533 www.antiquecenteroflacrosse.com

Beaver Dam Antique Mall
60+ DEALERS
Open Daily 10 to 5
Dark on Holidays
920-887-1116
142 Front St.
(Bus. 151 & Hwy. 33)
Beaver Dam, WI
DEALER INQUIRIES ALWAYS WELCOME!
Large Variety! Books to Jewelry,
Cookie Jars to Furniture...and so Much More!
Layaway • Gift Certificates • Mastercard/Visa

VINTAGE TITLES
Buying & Selling
Automobile & Motorcycle Titles
PO Box 540
S91W27850 National Ave.
Mukwonago, WI 53149
Ralph@greenfieldgallery.net
262-363-5885

44th Season – Elkhorn Antique & Flea Market Wisconsin’s Finest Antique Market

Welcome to the Elkhorn Antique Flea Market! You’ve obviously got the “antique bug” just like us. In fact, that’s how the Elkhorn Antique Flea Market began in 1982. A set of collectors and antique dealers saw potential in a perfect setting at the Walworth County Fairgrounds for the start of something big.

Not that you’d know it back then, when a good day was more than 50 dealers per show. Add another zero and you’ve got our current average of over 500 dealers!

They bring with them a wide range of merchandise from furniture in the rough to fine refinished, glassware to pottery, advertising to linens, decoys to dolls, and everything else in between. Besides seasoned show dealers, grandpa’s attic might show up in the back of a truck! The pickin’ is great, and so are the people.

The Elkhorn Antique Flea Market is located at the Walworth County Fairgrounds, Hwy. 11 (411 Court St.).

ELKHORN

ANTIQUE

FLEA MARKET

The 2025 Season
concludes on:
September 28

This event is open from 7am to 3pm on each date. Admission is \$5.00 per person. Free parking and great food on site.

So come on out for a real antiques experience this season. No cyberspace here! Get a good look at what you want. Talk with our wonderful dealers. Ponder a decision over some great food...and go home happy!

For vendor or shopper information, see our website at elkhornantiquefleamarket.com or call (414) 525-0820.



The Secret Is Out! Secret Market Monthly Shows Come to Brookfield Square Mall, Brookfield, WI

Please keep spreading the word about the newest destination for treasure hunting!

Secret Market has come to Brookfield Square Mall, 95 N. Moorland Rd. in Brookfield, WI. The same spot that was once Victoria’s Secret is now your go-to stop for a unique shopping experience.

We have gathered a diverse group of vendors (over 90 booths) with a common interest in nostalgia. You will find an eclectic mix of curated collections from decades past.

Whether you are a fan of furniture, clothing, home décor, jewelry, art, toys or music, there is truly something for everyone.

Come discover an incredible treasure trove of one-of-a-kind vintage finds.

Next show dates are **Saturday, September 6 and Sunday, September 7**. Secret Market is held monthly on select dates and is open on those Saturdays from 10am-4pm and Sundays 11am-4pm. The monthly Secret Market show dates will always be listed in Yesteryear’s Calendar of Events.

Plenty of parking is available. Admission to Secret Market is just \$1.

If you are a vendor looking for a bright new venue where you can sell your unique and fun inventory, call Randy (816) 536-9089 for more information. Follow us on Facebook a: Secretmarketbrookfieldsquare.



47th Annual Vintage Glass Show & Sale in Milwaukee, WI - October 18-19, 2025

The Vintage Glass Collectors of Wisconsin proudly announces their 47th annual show and sale on October 18 and 19th, 2025

Located in Milwaukee, Wisconsin this yearly show boasts superior dealers from across the country.

This once a year event has been dazzling attendees since the first show back in 1976. Collectors and enthusiasts converge of Milwaukee every year from around the Midwest with some collectors coming from as far away as California or New York.

Anyone who collects American-made glass, china or pottery will be amazed at the array of rare and unique pieces to view and to purchase.

During the last century, the best glass factories in the world were located in the United States. Sadly, today, only several of these companies remain. This event showcases a beautiful and lost art. It allows guests to view and buy a treasured piece of the past.

The Vintage Glass Show and Sale is located at the Knights of Columbus Hall, 732 Badger Avenue, South Milwaukee, WI 53172. Show hours are Saturday, October 18, 10 AM to 5 PM and Sunday, October 19, 11 AM to 3 PM.

For more information, please contact Glen Victorey (414) 551-2017.



Come to Cedarburg, Wisconsin for the 2025 Maxwell Street Days

This event has been a Volunteer Fire Department Tradition since 1966 and the major fundraiser for our Department. There are 4 Maxwell Street Days each year and all take place at our Firemen’s Park – W65N796 Washington Avenue, just a few blocks north of Cedarburg’s historic district.

We have over 650 spaces available to be filled with antiques, collectibles, attic & basement treasures, crafters, produce, seasonal items, pottery, tools, sports, old toys, rummage, garage finds, family collections, vintage treasures, architectural items, farm items and much more!

You will find over 100 volunteer members along with their family and friends helping to serve up food/beverages and assist you throughout the grounds. We try to have all spaces reserved prior to each of our events, but we will always keep a few spaces available prior to event for any new vendors.

We are always looking for new quality vendors to join us for any event or for the entire year.

Remember that one man’s junk, is another man’s treasure!!

Our event opens to the public at 6am and vendors are asked to stay set-up until 2pm. Admission is FREE.

There is adjacent and convenient parking to the north of grounds for \$10, which is coordinated by our Cedarburg American Legion Post #288. The event takes place rain or shine

and sorry, no animals, fireworks, pornographic materials, weapons, takeoffs or counterfeit merchandise are permitted on our grounds during any of the events.

It is always a great day of “Treasure Hunting” with family and friends of all ages.

The Cedarburg Volunteer Fire Department Members and their Families would like to thank you for supporting our Maxwell Street Day Fundraisers.

Dedicated Volunteers serving the community since 1866
All concessions rights reserved by Cedarburg Fire Department, Inc.

Find more information at: cedarburg-firemenspark.com or find us on Facebook at: Cedarburg Firemen’s Park.

REMAINING 2025 DATES:

August 31

October 5

CALENDAR OF EVENTS

EVENTS MAY BE SUBJECT TO CHANGE -

Please Call Ahead or check show status online for updates prior to traveling!

SATURDAY, AUGUST 23

ADAMS, WI: 45th Season Adams Flea & Farm Market. 556 S. Main St., Hwy. 13-S, by the railroad tracks. Indoor/Outdoor. Farmer's market area. Free admission. 8:00am-4:00pm (608) 403-5283

ADAMS, WI: Polish Flea Market, 135 W. Sherman St.. Open 8:00-11:00 am. Free Admission & parking. (608) 403-1133

ALSIP, IL: Tri-State Swap-O-Rama, 7am-4pm indoors/outdoors at 4350 West 129th St. Admission: adults \$3.00; seniors \$2.00. (708)344-7300

BEAVER DAM, WI: Craft/Flea Market, Dodge County Fairgrounds, Hwy. 33, 3 miles east of Beaver Dam. Open 8am-2pm for customers. Free admission & parking. Rain or shine. dodgecountyfairgrounds.com

BELOIT, WI: Downtown Beloit Farmers' Market, 8am-1pm, Downtown Beloit Association, State Street, Grand Avenue & Mill Street Parking Lot.

CALEDONIA, WI: 7 Mile Fair flea market. Indoor/Outdoor 9am-5pm. Admission: \$3 for 12 & up; \$1.00 Seniors. 2720 W. 7 Mile Rd. www.7milefair.com

CHICAGO, IL: Swap-O-Rama, 7am-4pm Indoors/Outdoors at 4200 S. Ashland Ave. Admission: adults \$3.00; seniors \$2.00 (708)344-7300

FRANKSVILLE (MILWAUKEE), WI: Re:Craft & Relic Night Market, 4:00-9:00pm. Franksville Craft Beer Garden, 9614 Northwestern Ave. 70+ Shops with vintage, handmade, boutique, food trucks, live music. Free admission. www.recraftandrelic.com

GRAFTON, IL: Riverside Flea Market at The Loading Dock, 401 E. Front St. Sat 9:00-5:00; Sun 9:00-4:00. (618) 556-7951; www.graftonloadingdock.com

KIMBERLY, WI: Flea Market at Antique Up, 850 E. Maes Ave. 9am-3pm. Food at most markets, plus vendors. Free admission. 715-423-6342

****MADISON, WI:** 29th Annual Wisconsin Pottery Association Art Pottery Show, Alliant Energy Center Exhibition Hall. 9am-3:00 p.m. Admission: \$5.00; Free Parking. 50 dealers with vintage & contemporary ceramics and a selection of other antiques and decorative items including art, glass, books & more.. Pottery identification (limit 2). www.wisconsinpottery.org

MELROSE PARK, IL: Swap-O-Rama, 7am-4pm indoors/outdoors at 4600 W. Lake St. Admission Adults \$3.00; Seniors \$2.00. (708)344-7300

OSHKOSH, WI: Oshkosh Farmers Market, 400 & 500 Blocks of N. Main St. & 100 Block of Church Ave. 8am-12:30pm. Approx. 120 vendors. <http://www.osfmi.com>

****PRINCETON, WI:** 50th Anniversary Famous Princeton Flea Market! Tree-shaded city park, Hwy. 23/73 (S. Fulton St.). Open at 6am-1pm for vendors and customers. Free admission & parking. Food stand on site. www.princetonwi.com

STEVENS POINT, WI: Flea Market at Antique Up, 3256 Church St. 9am-3pm. Food, vendors, sales & more. Free admission. 715-204-1604

TOMAHAWK, WI: Farm & Flea Market, Tomahawk's Qualheim's True Value parking lot. 79 Hometown Drive, just north of Tomahawk on the corner of Hwy A an A. 8am-2pm. Facebook: Tomahawk Farm & Flea Market

****UNION GROVE, WI:** Open Air Wisconsin Flea Market. Racine County Fairgrounds, 19805 Durand Ave, Union Grove, WI 53182. Antiques, collectibles, crafts, vintage, produce, gardening, new & old, advertising, furniture, & more! Admission: \$2. Free parking. 7am to 3pm. (715) 526-9769 www.zurkopromotions.com

WAUKESHA, WI: Waukesha Farmer's Market, in downtown Waukesha, in the Waukesha State Bank employee parking lot. 8am to noon. Locally grown in-season produce and flowers, plus bakery canned goods and foods. Facebook: Waukesha Farmers' Market.

SUNDAY, AUGUST 24

ADAMS, WI: 45th Season Adams Flea & Farm Market. 556 S. Main St., Hwy. 13-S, by the railroad tracks. Indoor/Outdoor. Farmer's market area. Free admission. 8:00am-4:00pm (608) 403-5283

ADAMS, WI: Polish Flea Market, 135 W. Sherman St.. Open 8:00-11:00 am. Free Admission & parking. (608) 403-1133

ALSIP, IL: Tri-State Swap-O-Rama, 7am-4pm indoors/outdoors at 4350 West 129th St. Admission: adults \$3.00; seniors \$2.00. (708)344-7300

CALEDONIA, WI: 7 Mile Fair flea market. Indoor/Outdoor 9am-5pm. Admission: \$3 for 12 & up; \$1.00 Seniors. 2720 W. 7 Mile Rd. www.7milefair.com

FREE LISTINGS!

We still offer FREE LISTINGS for events in our monthly Calender of Events--the largest found in any antique and collectible publication circulated in the North Central States! We welcome your listing of Antique Shows, Flea Markets, Arts & Crafts Shows, Auctions and Events of Special Interest.

Please send showcard, flyer or handwritten your event information and send/email to:

YESTERYEAR CALENDAR OF EVENTS
P.O. Box 306, Montello, WI 53949
yesteryearantiques@frontier.com

Remember, there is NO Charge for this service!

(Deadline is the 10th of the month prior to event month)

EVENTS ARE SUBJECT TO CHANGE!
BEFORE TRAVELING IT IS A GOOD IDEA TO CONFIRM EVENT

CHICAGO, IL: Swap-O-Rama, 7am-4pm Indoors/Outdoors at 4200 S. Ashland Ave. Admission: adults \$3.00; seniors \$2.00 (708)344-7300

****DODGEVILLE, WI:** 33rd Annual Antique Show & Flea Market, sponsored by the Dodgeville Lions. Ley Pavillion in Harris Park. 8:00-3:00; Admission: \$5.00. 608-935-3926; 608-574-1322; 913-558-3980. Visit us on Facebook: Dodgeville Lions Club, for up to date information.

EAGLE RIVER, WI: Sunday Farmers' Market, Mill St & Michigan St. Hwy 45N, north of the bridge. 10:00am-2:00pm. (715)477-0645

GRAFTON, IL: Riverside Flea Market at The Loading Dock, 401 E. Front St. Sat 9:00-5:00; Sun 9:00-4:00. (618) 556-7951; www.graftonloadingdock.com

****JEFFERSON, WI:** Jefferson Bargain Fair Flea Market & Craft Fair. Jefferson Speedway grounds, Hwy. 18; 6 miles W. of Jefferson. 6:30am-2pm. Free Admission. (920)648-6407 or 648-2705

MELROSE PARK, IL: Swap-O-Rama, 7am-4pm indoors/outdoors at 4600 W. Lake St. Admission Adults \$3.00; Seniors \$2.00. (708)344-7300

ROSEMONT, IL: Wolff's Flea Market, Allstate Arena, 6920 N. Mannheim. 6am-2pm. Admission: \$3; seniors & children 6-12, \$2. Early Bird before 6am is \$5. Check for updates on Facebook or www.wolffs.com.

****SHAWANO, WI:** Shawano Flea Market, 55th year, featuring more than 150 vendors at the Shawano Co. Fairgrounds, 990 E. Green Bay St. Antiques, Collectibles, Crafts, Vintage, Mid Century Modern, Gardening, New & Old, Advertising, Old Toys, & More. 7:00am-4:00pm. Adm: \$2.00. Early buyers before 7am are \$10. (715) 526-9769. www.zurkopromotions.com

WILMOT, WI: Wilmot Flea Market, at the Kenosha County Fairgrounds, 30820 111th St. 7am-2pm. Admission: Adults \$2.00; Seniors & kids 6-14 \$1.00; kids 5 & under free. Free parking. (262) 716-5716; wilmotfleamarket.net

MONDAY, AUGUST 25

HAYWARD, WI: Monday Flea Market at the Hayward Sports Center, 10475 Sutiiff Drive. Over 150 vendors, inside & out plus food. Antiques, collectibles, crafts, Fishing Tackle, Farmer's Market, Jewelry, Coins, Books, etc. www.haywardsportscenter.com; (715) 634-4791

ST. GERMAIN, WI: Annual St. Germain Fire Department Association Flea Market & Craft Show, St. Germain Community Park, Hwy. 70 & 155. 8am-3pm. Free admission & parking. 715-891-7333

TUESDAY, AUGUST 26

BOULDER JUNCTION, WI:

Lions Club Summer Craft & Flea Market, Boulder Junction Community Center, 5392 Park St. (Hwy M), 8am-2pm. a large outdoor craft and flea market, Library used book sale and food vendors. (715) 686-7970; <https://boulderjct.org/>

CHICAGO, IL: Swap-O-Rama, 7am-2pm outdoors at 4200 S. Ashland Ave. Admission: adults \$1.00; seniors 50¢ (708)344-7300

SHIPSHEWANA, IND: Shipshewana Flea Market, 8am-4pm. 345 S. Van Buren St. Outdoor, up to 700 vendors. Free admission; parking \$5. www.shipshewanafleamarket.com

WEDNESDAY, AUGUST 27

ADAMS, WI: Polish Flea Market's Farmers Market Wednesday, 135 W. Sherman St. Open 11:00-4:00. (608) 403-1133

ALSIP, IL: Tri-State Swap-O-Rama, 7am-2pm outdoors at 4350 West 129th St. Admission: adults \$1.00; seniors 50¢. (708)344-7300

EAGLE RIVER, WI: Wednesday Farmers' Market, Mill St & Michigan St. Hwy 45N, north of the bridge. 8:30am-1:00pm. (715) 477-0645

NEW RICHMOND, WI: Heritage Center Barn Flea Market, 1100 Heritage Dr. Wed, 8-2 & 5-7; Saturdays: 8am-2pm; Sundays: 8-2. 90+yr-old Dairy Barn filled with treasures. Inventory changes weekly. 715-246-3276; nrheritagecenter.org

SHIPSHEWANA, IND: Shipshewana Flea Market, 8am-4pm. 345 S. Van Buren St. Outdoor, up to 700 vendors. Free admission; parking \$5. www.shipshewanafleamarket.com

SHIPSHEWANA, IND: Weekly Misc. & Antique Auction, 9AM start. 345 S Van Buren St. "Shipshewana Auction Misc. & Antique Building." Live auction with 6-10 Auctioneers selling simultaneously. shipshewanatradingplace.com; (260) 768-4129.

THURSDAY, AUGUST 28

CHICAGO, IL: Swap-O-Rama, 7am-3pm outdoors at 4200 S. Ashland Ave. Admission: adults \$1.00; seniors 50¢ (708)344-7300

LAND O'LAKES, WI: Land O'Lakes Summer Market at Town Hall, 4331 County Rd. B. 9am-3pm (715)547-3432

MANITOWISH WATERS, WI: Lions Club Flea, Craft & Farm Market at Manitowish Park, 4 Airport Rd. 9am-2pm. (715) 686-2033; www.mwllionsclub.org

FRIDAY, AUGUST 29

****ANTIGO, WI:** Antique & Flea Market, *NEW LOCATION: Downtown Antigo. 9am-4pm. Free Admission. (715) 526-9769; www.zurkopromotions.com

MELROSE PARK, IL: Swap-O-Rama, 7am-2pm outdoors at 4600 W. Lake St. Admission: Free (708)344-7300

MINOCQUA, WI: Minocqua Farmers Market, 408 Chicago St., Minocqua Visitor's Bureau and Chamber of Commerce. 8am-1pm. (715) 356-5266. www.minocqua.org.

PRESQUE ISLE, WI: Farm Fresh Friday Market, Main Street, next to the Chamber. 8am-2pm. Farm fresh produce, bakery, honey, cheese, grass fed meats/poultry, smoked fish, and handcrafted items. (715) 686-2910

SATURDAY, AUGUST 30

ADAMS, WI: 45th Season Adams Flea & Farm Market. 556 S. Main St., Hwy. 13-S, by the railroad tracks. Indoor/Outdoor. Farmer's market area. Free admission. 8:00am-4:00pm (608) 403-5283

ADAMS, WI: Polish Flea Market, 135 W. Sherman St.. Open 8:00-11:00 am. Free Admission & parking. (608) 403-1133

ALSIP, IL: Tri-State Swap-O-Rama, 7am-4pm indoors/outdoors at 4350 West 129th St. Admission: adults \$3.00; seniors \$2.00. (708)344-7300

BELOIT, WI: Downtown Beloit Farmers' Market, 8am-1pm, Downtown Beloit Association, State Street, Grand Avenue & Mill Street Parking Lot.

CALEDONIA, WI: 7 Mile Fair flea market. Indoor/Outdoor 9am-5pm. Admission: \$3 for 12 & up; \$1.00 Seniors. 2720 W. 7 Mile Rd. www.7milefair.com

CHICAGO, IL: Swap-O-Rama, 7am-4pm Indoors/Outdoors at 4200 S. Ashland Ave. Admission: adults \$3.00; seniors \$2.00 (708)344-7300

COLOMA, WI: Coloma Area Historical Society Flea Market, Coloma Community Park, south of Hwy 21 on County Rd CH. 8am-3pm. Free admission. Vendor info: 414-217-5893

(Continued on Page 12)



CEARBURG
MAXWELL ST. DAYS

Cedarburg Firemen's Park
2025: AUGUST 31 • OCTOBER 5

Looking to add more Vendors of:
Produce, Garden, Crafters & Treasures
Spaces - \$50 • 262-377-8412

cedarburgfiremenspark.com • A 57 Year Department Tradition



Feed-N-Wax®

Wood Polish & Conditioner

Feed-N-Wax Wood Polish & Conditioner is ideal for enhancing the natural depth of grain while providing added protection and luster to furniture, antiques, and cabinets. Feed-N-Wax helps introduce conditioning oils that "feed" the wood while providing a protective coating of beeswax and carnauba wax. Feed-N-Wax can be used on finished or unfinished wood to help preserve and keep the wood from drying out, fading, or even cracking.

- Maintains the restored finish after using Restor-A-Finish
- Helps to prevent further drying of the wood and deterioration of the finish
- Polishes all wood surfaces to a soft luster and protects with a coating of natural waxes
- Does not contain silicone or linseed oil
- Antique Dealer recommended since 1969
- Gel-like consistency makes it easy to use



Antique Furniture • Kitchen Cabinets
Original Woodwork • Paneling
Clocks • Banisters



HOWARD
Feed-N-Wax
Wood Polish & Conditioner

CAUTION: COMBUSTIBLE
Read cautions on back panel
CONTENTS: 8 FL. OZ. (228 ml)

If you are interested in selling Howard Products call 800-266-9545 for resale information.

FOLLOW US!  

VISIT OUR WEBSITE WWW.HOWARDPRODUCTS.COM
OR CALL (800) 266-9545
TO FIND A DEALER IN YOUR AREA

CALENDAR

Celebrate our 47th Annual
Milwaukee's Vintage
Glass Show & Sale
October 18-19, 2025
Saturday: 10:00-5:00 • Sunday: 11:00-3:00
Presented by The Vintage Glass Collectors of Wisconsin

Featuring Nationally-Known Dealers With the Best in:
Mid-Century Glass, Elegant Glass
Kitchen Glassware, Depression Era Glass,
& American Dinnerware

Knights of Columbus Hall
732 Badger Avenue
South Milwaukee, WI 53172

Admission: \$6.00 - Good for both days
Reference Library • Door Prizes
Club Membership Information • Food Available
Info: Glen (414) 551-2017
or email: degswisconsin@gmail.com

\$1 Off
With This
Ad

ELKHORN ANTIQUE FLEA MARKET

2025 - 44th Season! Rain or Shine

Last Show of the Season:
September 28th

FAIRGROUNDS • Hwy. 11
Open 7am • Gate \$5.00 • FREE PARKING
Good Food • Paved Walkways • No Pets
OVER 500 INSIDE & OUTSIDE DEALERS!

**FEATURING GREAT ANTIQUES &
COLLECTIBLES~WISCONSIN'S FINEST!**

414-525-0820 • nlpromotionsllc@gmail.com
elkhornantiquefleamarket.com

2025
A Cedarburg Fire Department
Tradition for 59 YEARS!

The "Treasure Hunt" will continue
at Firemen's Park in historic Cedarburg, WI
W65N796 Washington Ave

AUGUST 31 • OCTOBER 5
Our Legion Post 288 Has Convenient & Adjacent
Parking North of Grounds - \$10
Join us as an Attendee or a Vendor

We can accommodate over
500 QUALITY VENDORS of:
Antiques, Collectibles, Vintage,
Seasonal, Rummage,
Attic/Basement Treasures,
Pottery, Toys, Books, Tools,
Farm Items, Garage Finds,
Grandma's Keepsakes,
Crafters, Produce, Garden & More...

Gates Open
6 am - 2 pm
FREE
Admission
Rain/Shine

Great Food, Beverages & Volunteers!

For your convenience we offer a pick-up service from
vendor stands to loading zones for a small fee & a
place to drop off your smaller items, while you shop.
For More Information Visit:
cedarburgfiremenspark.com
cedarburgfiremenspark@gmail.com
Sorry, no animals allowed on grounds

Proceeds Benefit Cedarburg Fire Department
Serving The Community Since 1866

****EAGLE RIVER, WI:** Eagle River, WI Flea Market, Vilas County Fairgrounds, 164 Forest St. Sat & Sun 7am-4pm. Admission: \$2; kids 12 & under free w/adult. Free parking. Buy, sell, and trade in this open-air flea market bargain hunters' paradise! New vendors welcome. (715) 526-9769; www.zurkopromotions.com

MELROSE PARK, IL: Swap-O-Rama, 7am-4pm indoors/outdoors at 4600 W. Lake St. Admission Adults \$3.00; Seniors \$2.00. (708)344-7300

OSHKOSH, WI: Oshkosh Farmers Market, 400 & 500 Blocks of N. Main St. & 100 Block of Church Ave. 8am-12:30pm. Approx. 120 vendors. http://www.osfmi.com

****PRINCETON, WI:** 50th Anniversary Famous Princeton Flea Market! Tree-shaded city park, Hwy. 23/73 (S. Fulton St.). Open at 6am-1pm for vendors and customers. Free admission & parking. Food stand on site. www.princetonwi.com

TOMAHAWK, WI: Farm & Flea Market, Tomahawk's Qualheim's True Value parking lot. 79 Hometown Drive, just north of Tomahawk on the corner of Hwy A an A. 8am-2pm. Facebook: Tomahawk Farm & Flea Market

TREGO, WI: 6th Annual Antique Adventures Flea Market, N7340 Liesch Rd. 8am-2pm. (920) 229-0322

WAUKESHA, WI: Waukesha Farmer's Market, in downtown Waukesha, in the Waukesha State Bank employee parking lot. 8am to noon. Locally grown in-season produce and flowers, plus bakery canned goods and foods. Facebook: Waukesha Farmers' Market.

SUNDAY, AUGUST 31

ADAMS, WI: 45th Season Adams Flea & Farm Market. 556 S. Main St., Hwy. 13-S, by the railroad tracks. Indoor/Outdoor. Farmer's market area. Free admission. 8:00am-4:00pm (608) 403-5283

ADAMS, WI: Polish Flea Market, 135 W. Sherman St.. Open 8:00-11:00 am. Free Admission & parking. (608) 403-1133

ALSIP, IL: Tri-State Swap-O-Rama, 7am-4pm indoors/outdoors at 4350 West 129th St. Admission: adults \$3.00; seniors \$2.00. (708)344-7300

BARABOO, WI: Baraboo Sunday Market, downtown area, on the square. Rain or shine. 10am-2pm. Vintage, Antique, Artisans, Handmade & Homegrown. 608-448-3490; www.downtownbaraboo.com

CALEDONIA, WI: 7 Mile Fair flea market. Indoor/Outdoor 9am-5pm. Admission: \$3 for 12 & up; \$1.00 Seniors. 2720 W. 7 Mile Rd. www.7milefair.com

****CEDARBURG, WI:** Cedarburg Maxwell St. Days Flea Market. Firemen's Park, W65N796 Washington Ave. 500 vendor spaces available. Antiques, collectibles, attic & basement treasures, crafters, produce, sports, old toys, rummage, family collections, vintage treasures, and much more! Open 6:00am-2:00pm. Free Admission. cedarburg-firemenspark.com or visit us on Facebook

CHICAGO, IL: Swap-O-Rama, 7am-4pm Indoors/Outdoors at 4200 S. Ashland Ave. Admission: adults \$3.00; seniors \$2.00 (708)344-7300

EAGLE RIVER, WI: Sunday Farmers' Market, Mill St & Michigan St. Hwy 45N, north of the bridge. 10:00am-2:00pm. (715)477-0645

****EAGLE RIVER, WI:** Eagle River, WI Flea Market, Vilas County Fairgrounds, 164 Forest St. Sat & Sun 7am-4pm. Admission: \$2; kids 12 & under free w/adult. Free parking. Buy, sell, and trade in this open-air flea market bargain hunters' paradise! New vendors welcome. (715) 526-9769; www.zurkopromotions.com

HAYWARD, WI: Monday Flea Market at the Hayward Sports Center, 10475 Sutliff Drive. Over 150 vendors, inside & out plus food. Antiques, collectibles, crafts, Fishing Tackle, Farmer's Market, Jewelry, Coins, Books, etc. www.haywardsportscenter.com; (715) 634-4791

****JEFFERSON, WI:** Jefferson Bargain Fair Flea Market & Craft Fair. Jefferson Speedway grounds, Hwy. 18; 6 miles W. of Jefferson. 6:30am-2pm. Free Admission. (920) 648-6407 or 648-2705

MELROSE PARK, IL: Swap-O-Rama, 7am-4pm indoors/outdoors at 4600 W. Lake St. Admission Adults \$3.00; Seniors \$2.00. (708)344-7300

ROSEMONT, IL: Wolff's Flea Market, Allstate Arena, 6920 N. Mannheim. 6am-2pm. Admission: \$3; seniors & children 6-12, \$2. Early Bird before 6am is \$5. Check for updates on Facebook or www.wolffs.com.

WILMOT, WI: Wilmot Flea Market, at the Kenosha County Fairgrounds, 30820 111th St. 7am-2pm. Admission: Adults \$2.00; Seniors & kids 6-14 \$1.00; kids 5 & under free. Free parking. (262) 716-5716; wilmotfleamarket.net

MONDAY, SEPTEMBER 1
LABOR DAY

CALEDONIA, WI: 7 Mile Fair flea market. Indoor/Outdoor 9am-5pm. Admission: \$3 for 12 & up; \$1.00 Seniors. 2720 W. 7 Mile Rd. www.7milefair.com

ST. GERMAIN, WI: Annual St. Germain Fire Department Association Flea Market & Craft Show, St. Germain Community Park, Hwy. 70 & 155. 8am-3pm. Free admission & parking. 715-891-7333

SHIPSHEWANA, IND: Shipshewana Weekend Flea Market, 8am-4pm. 345 S. Van Buren St. Outdoor, up to 700 vendors. Free admission; parking \$5. www.shipshewana-fleamarket.com

TUESDAY, SEPTEMBER 2

CHICAGO, IL: Swap-O-Rama, 7am-2pm outdoors at 4200 S. Ashland Ave. Admission: adults \$1.00; seniors 50¢ (708)344-7300

SHIPSHEWANA, IND: Shipshewana Flea Market, 8am-4pm. 345 S. Van Buren St. Outdoor, up to 700 vendors. Free admission; parking \$5. www.shipshewanafleamarket.com

WEDNESDAY, SEPTEMBER 3

ADAMS, WI: Polish Flea Market's Farmers Market Wednesday, 135 W. Sherman St. Open 11:00-4:00. (608) 403-1133

ALSIP, IL: Tri-State Swap-O-Rama, 7am-2pm outdoors at 4350 West 129th St. Admission: adults \$1.00; seniors 50¢. (708)344-7300

EAGLE RIVER, WI: Wednesday Farmers' Market, Mill St & Michigan St. Hwy 45N, north of the bridge. 8:30am-1:00pm. (715) 477-0645

NEW RICHMOND, WI: Heritage Center Barn Flea Market, 1100 Heritage Dr. Wed, 8-2 & 5-7; Saturdays: 8am-2pm; Sundays: 8-2. 90+yr-old Dairy Barn filled with treasures. Inventory changes weekly. 715-246-3276; nrheritagecenter.org

SHIPSHEWANA, IND: Shipshewana Flea Market, 8am-4pm. 345 S. Van Buren St. Outdoor, up to 700 vendors. Free admission; parking \$5. www.shipshewanafleamarket.com

SHIPSHEWANA, IND: Weekly Misc. & Antique Auction, 9AM start. 345 S Van Buren St. "Shipshewana Auction Misc. & Antique Building." Live auction with 6-10 Auctioneers selling simultaneously. shipshewanatradingplace.com; (260) 768-4129.

THURSDAY, SEPTEMBER 4

CHICAGO, IL: Swap-O-Rama, 7am-3pm outdoors at 4200 S. Ashland Ave. Admission: adults \$1.00; seniors 50¢ (708)344-7300

22nd Annual
Antiques Sporting
Advertising
& Collectible Show
Fri., October 24, 2025 - 9-6
Sat., October 25, 2025 - 9-3
SUNNYVIEW EXPO CENTER
500 EAST COUNTY RD Y - OSHKOSH, WI
(Exit from Hwy 41 - Exit 124 S. Hwy 76)

50 BOOTHS OF QUALITY ANTIQUES
Sporting - Advertising - Collectibles - Coins/Currency
Fine China/Art - Jewelry - Vintage - Postcards
Fishing & Hunting - Military - Vintage Toys - Furniture

FREE PARKING! FOOD AVAILABLE!
ADMISSION \$5 (Under 16: FREE)
GOOD FOR BOTH DAYS

Dealer Inquiries Welcomed!
JOYCE ANDERSON
joyce.midwest@ntd.net
920-252-0319

**ANTIQUE
SPECTACULAR**
• VINTAGE MARKET •
QUAD CITIES

November 7-9
QCCA Expo Center
2621 4th Avenue
Rock Island, IL
FRI 4-8 • SAT 10-5 • SUN 10-3
712.326.9964
Save \$1 off \$10 Adm **antiquespectacular.com**

OF EVENTS

FRIDAY, SEPTEMBER 5

MELROSE PARK, IL: Swap-O-Rama, 7am-2pm outdoors at 4600 W. Lake St. Admission: Free (708)344-7300

MINOCQUA, WI: Minocqua Farmers Market, 408 Chicago St., Minocqua Visitor's Bureau and Chamber of Commerce. 8am-1pm. (715) 356-5266. www.minocqua.org.

PRESQUE ISLE, WI: Farm Fresh Friday Market, Main Street, next to the Chamber. 8am-2pm. Farm fresh produce, bakery, honey, cheese, grass fed meats/poultry, smoked fish, and handcrafted items. (715) 686-2910

SATURDAY, SEPTEMBER 6

ADAMS, WI: 45th Season Adams Flea & Farm Market. 556 S. Main St., Hwy. 13-S, by the railroad tracks. Indoor/Outdoor. Farmer's market area. Free admission. 8:00am-4:00pm (608) 403-5283

ADAMS, WI: Polish Flea Market, 135 W. Sherman St.. Open 8:00-11:00 am. Free Admission & parking. (608) 403-1133

ALSIP, IL: Tri-State Swap-O-Rama, 7am-4pm indoors/outdoors at 4350 West 129th St. Admission: adults \$3.00; seniors \$2.00. (708)344-7300

BELOIT, WI: Downtown Beloit Farmers' Market, 8am-1pm, Downtown Beloit Association, State Street, Grand Avenue & Mill Street Parking Lot.

BROOKFIELD, WI: Secret Market, located in beautiful Brookfield Square Mall, 95 N. Moorland Rd. Hours: Saturday 10am-4pm, Sunday 11am-4pm. 90 booths filled with antiques, art, vintage, retro, collectibles, jewelry, toys, clothing, leather. Admission \$1.00. (816) 536-9089

CALEDONIA, WI: 7 Mile Fair flea market. Indoor/Outdoor 9am-5pm. Admission: \$3 for 12 & up; \$1.00 Seniors. 2720 W. 7 Mile Rd. www.7milefair.com

CHICAGO, IL: Swap-O-Rama, 7am-4pm Indoors/Outdoors at 4200 S. Ashland Ave. Admission: adults \$3.00; seniors \$2.00 (708)344-7300

KENOSHA, WI: Kenosha Public Market outdoors at 625 52nd St. 9:00-2:00. Vendors come with a variety of fresh local products including fruits, vegetables, meats, prepared foods, handmade gifts & more. kenoshapublicmarket.com

MANITOWOC, WI: Front Lawn Flea Market at Gritty Lane Antique Mall, 3310 Calumet Ave. 10am-4pm. FREE admission. (Vendors welcome as space allows - \$33 or less spaces.) (920)320-9232; Facebook/grittylane

****MANTORVILLE, MN:** 60th Annual Marigold Days Antique & Flea Market, in Riverside Park. (15 miles west of Rochester) 175+ vendors of antiques, collectibles, primitives, arts & crafts. Flea Market hours: Sat 8-5; Sun 9-4. Festival also includes "grande parade," flower show, quilt show, car show & more. www.marigolddays.com

MELROSE PARK, IL: Swap-O-Rama, 7am-4pm indoors/outdoors at 4600 W. Lake St. Admission Adults \$3.00; Seniors \$2.00. (708)344-7300

****MERRILL, WI:** Merrill Wisconsin Flea Market at Merrill Fairgrounds, formerly known as Lincoln County Fairgrounds, 2001 E. 2nd St. 7am-4pm. Admission \$2; kids 12 & under free with adult. Free parking. New vendors welcome. (715) 526-9769; www.zurkopromotions.com

****MONROE, WI:** Green County Market, Green County Fairgrounds, 2600 10th St. Antiques, Artisans, Boutique, Farmers & More. Sat 8-5, Sun 8-3. Free Admission; 9 & under free; free parking. 4-H & FFA Fundraiser. 608-325-9159; www.greencountyfair.net

OSHKOSH, WI: Oshkosh Farmers Market, 400 & 500 Blocks of N. Main St. & 100 Block of Church Ave. 8am-12:30pm. Approx. 120 vendors. <http://www.osfmi.com>

****PRINCETON, WI:** 50th Anniversary Famous Princeton Flea Market! Tree-shaded city park, Hwy. 23/73 (S. Fulton St.). Open at 6am-1pm for vendors and customers. Free admission & parking. Food stand on site. www.princetonwi.com

ST. CHARLES, IL: Kane County Antique Flea Market, Kane County Fairgrounds at 525 S. Randall Road. Up to 400 dealers. Sat 12:00-5:00 pm.; Sun 7-4. Adm: Adults \$6.00; children under 12 free with adult. Free parking. www.kanecountyfleamarket.com. 630-377-2252; 630-708-8911

TOMAHAWK, WI: Farm & Flea Market, Tomahawk's Qualheim's True Value parking lot. 79 Hometown Drive, just north of Tomahawk on the corner of Hwy A an A. 8am-2pm. Facebook: Tomahawk Farm & Flea Market

WAUKESHA, WI: Waukesha Farmer's Market, in downtown Waukesha, in the Waukesha State Bank employee parking lot. 8am to noon. Locally grown in-season produce and flowers, plus bakery canned goods and foods. Facebook: Waukesha Farmers' Market.

WHEATON, IL: Dupage Comic Con at Dupage County Fairgrounds, Building 1, 2015 Manchester Rd. 10am-5pm. Admission \$10; kids 12 & under free. Celebrity panels, artist alley, cosplay contest, merchandise vendors. Over 150 dealers, artists & special guests. MCconventions.com



GREEN COUNTY MARKET
SEPTEMBER 6-7, 2025

2600 Tenth Street
Monroe, WI 53566
608-325-9159
greencountyfairgrounds@gmail.com

SATURDAY 8-5 ↔ SUNDAY 8-3
ADMISSION: FREE ↔ FREE PARKING

FOOD ON GROUNDS

ANTIQUE & FLEA

BOUTIQUE

ARTISANS

FARMERS

VENDOR SPACES AVAILABLE
VENDOR APPLICATIONS AVAILABLE ONLINE
OR BY REQUEST

FLEA MARKET
VINTAGE/ANTIQUE/TOY SHOW

GRAHAM PARK, AKA OLMSTED CO. FAIRGROUNDS
Bldgs 31 & 35 • Hwy. 63-S. **ROCHESTER, MN**
9AM-2PM • ADM.-\$3 • FREE PARKING

SUNDAYS: Nov 2 & Nov 23

TOWNSEND PROMOTIONS

Show Info: 507-269-1473
Website: www.townsendshows.com • townsendshows@gmail.com
See Us On Facebook: Townsend Shows

JEFFERSON BARGAIN FAIR

LARGE OUTDOOR FLEA MARKET & CRAFT FAIR

Located 6 miles W. of Jefferson, WI on Hwy. 18 at the Jefferson Speedway grounds

\$ Open Every Sunday

April 6th thru October 19th

ONLY \$20 Set-up Fee

Space approx. 18x25 • Larger Spaces Available
No Reservation Needed • Open 6:30a.m. to 2p.m.

FREE PARKING & ADMISSION!
Food-Beverages-Restrooms all on grounds

For more information call:
920-650-5755 or 920-648-2705

Come out for a Fun Day and look for a Bargain at the BARGAIN FAIR!



FLEA MARKET AT WAUKESHA CO. EXPO

WISCONSIN RUMMAGE-O-RAMA

Show Hours:
Sat. 9am-5pm / Sun. 9am-4pm

1000 Northview Rd. - Waukesha, WI
Admission: \$5.00; Children under 12: Free
Senior & Military: \$3.00 • FREE Parking

Shop a huge variety of quality Antiques, Collectibles, Crafts, Misc. & much more, all under 1 roof! Bargains Galore, & a Whole Lot More!

VENDOR INFO: (414) 481-5859
www.wirummageorama.com...Or see us on 

2025-2026 Show Dates:

OCT 11-12, 2025
NOV 15-16, 2025
DEC 20-21, 2025
JANUARY 17-18, 2026
FEBRUARY 14-15, 2026
MARCH 21-22, 2026
APRIL 18-19, 2026

OUR 69th YEAR!

Mukwonago American Legion Post 375

Mukwonago

MAXWELL STREET DAYS

FLEA MARKET

LAST SHOW OF THE SEASON:
SEPTEMBER 13-14, 2025

HUNDREDS OF SELLERS!

FOOD & REFRESHMENTS AVAILABLE ON GROUNDS!

Field Park - Hwys. 83 & NN • Mukwonago, WI

Open 8am-5pm Each Day • Free Admission!

Reasonable Off-Site Parking Available • NO pets, bicycles, skateboards

VENDORS PLEASE RESERVE ALL SPACES

Maxwell Street Days
P.O. Box 97, Mukwonago, WI 53149-0097
Info: 262-363-1501 • www.maxwellstreetdays.net





WISCONSIN ANTIQUES DEALERS ASSOCIATION

Our 74th Fall Show

Antiques Show & Sale

59 Quality Dealers
Authenticity Guaranteed

- Free Parking
- Good Food
- Five \$50 Gift Certificates!
- ATM on Premises



October 3 & 4, 2025
Fri. 10 - 6 Sat. 10 - 4

Waukesha County Expo Center

Admission \$8.00 (good both days)
\$1 off with this card (up to 2 persons)

Benefits Wisconsin Historical Grant Programs

*** Special Exhibit: Trick or Treat ***

Friday Night Fish Fry Dinner!

Directions: I-94 to Hwy J (exit 294)
South 1 mile. West to Show.

GPS: 1000 Northview Road
Waukesha, WI 53188

More information: (414) 510-4441 www.WisconsinAntiquesDealers.com

CALENDAR OF EVENTS: Shows, Flea Markets & More!

SUNDAY, SEPTEMBER 7

ADAMS, WI: 45th Season Adams Flea & Farm Market. 556 S. Main St., Hwy. 13-S, by the railroad tracks. Indoor/Outdoor. Farmer's market area. Free admission. 8:00am-4:00pm (608) 403-5283

ADAMS, WI: Polish Flea Market, 135 W. Sherman St.. Open 8:00-11:00 am. Free Admission & parking. (608) 403-1133

ALSIP, IL: Tri-State Swap-O-Rama, 7am-4pm indoors/outdoors at 4350 West 129th St. Admission: adults \$3.00; seniors \$2.00. (708)344-7300

BROOKFIELD, WI: Secret Market, located in beautiful Brookfield Square Mall, 95 N. Moorland Rd. Hours: Saturday 10am-4pm, Sunday 11am-4pm. 90 booths filled with antiques, art, vintage, retro, collectibles, jewelry, toys, clothing, leather. Admission \$1.00. (816) 536-9089

CALEDONIA, WI: 7 Mile Fair flea market. Indoor/Outdoor 9am-5pm. Admission: \$3 for 12 & up; \$1.00 Seniors. 2720 W. 7 Mile Rd. www.7milefair.com

CHICAGO, IL: Swap-O-Rama, 7am-4pm Indoors/Outdoors at 4200 S. Ashland Ave. Admission: adults \$3.00; seniors \$2.00 (708)344-7300

DUBUQUE, IA: Quad Con Comic & Toy Show, Five Flags Center, 405 Main St. Dubuque's BIGGEST Pop Culture Event Returns! Video game tournaments, cosplay showcase, artists/vendors selling vintage video games, posters, comics, toys, Funko Pops, and other pop culture related items Opens 10 am. Ticket info: www.quadcitycon.com

EAGLE RIVER, WI: Sunday Farmers' Market, Mill St & Michigan St. Hwy 45N, north of the bridge. 10:00am-2:00pm. (715)477-0645

****JEFFERSON, WI:** Jefferson Bargain Fair Flea Market & Craft Fair. Jefferson Speedway grounds, Hwy. 18; 6 miles W. of Jefferson. 6:30am-2pm. Free Admission. (920) 648-6407 or 648-2705

****MANTORVILLE, MN:** 60th Annual Marigold Days Antique & Flea Market, in Riverside Park. (15 miles west of Rochester) 175+ vendors of antiques, collectibles, primitives, arts & crafts. Flea Market hours: Sat 8-5; Sun 9-4. Festival also includes "grande parade," flower show, quilt show, car show & more. www.marigolddays.com

MELROSE PARK, IL: Swap-O-Rama, 7am-4pm indoors/outdoors at 4600 W. Lake St. Admission Adults \$3.00; Seniors \$2.00. (708)344-7300

MILWAUKEE, WI: Make Art MKE at Mount Mary University, 2900 Menomonee River Pkwy. 10am-4pm. 160 artists & makers of fine art, handmade goods, plus food trucks. Admission: \$10; kids free. Portion of proceeds to benefit local art programs & Cooper Park. www.recraftandrelie.com



****MONROE, WI:** Green County Market, Green County Fairgrounds, 2600 10th St. Antiques, Artisans, Boutique, Farmers & More. Sat 8-5, Sun 8-3. Free Admission; 9 & under free; free parking. 4-H & FFA Fundraiser. 608-325-9159; www.greencountyfair.net

ROSEMONT, IL: Wolff's Flea Market, Allstate Arena, 6920 N. Mannheim. 6am-2pm. Admission: \$3; seniors & children 6-12, \$2. Early Bird before 6am is \$5. Check for updates on Facebook or www.wolffs.com.

ST. CHARLES, IL: Kane County Antique Flea Market, Kane County Fairgrounds at 525 S. Randall Road. Up to 400 dealers. Sat 12:00-5:00 pm.; Sun 7-4. Adm: Adults \$6.00; children under 12 free with adult. Free parking. www.kane-countyfleaemarket.com. 630-377-2252; 630-708-8911

****SHAWANO, WI:** Shawano Flea Market, 55th year, featuring more than 150 vendors at the Shawano Co. Fairgrounds, 990 E. Green Bay St. Antiques, Collectibles, Crafts, Vintage, Mid Century Modern, Gardening, New & Old, Advertising, Old Toys, & More. 7:00am-4:00pm. Adm: \$2.00. Early buyers before 7am are \$10. (715) 526-9769. www.zurkopromotions.com

WILMOT, WI: Wilmot Flea Market, at the Kenosha County Fairgrounds, 30820 111th St. 7am-2pm. Admission: Adults \$2.00; Seniors & kids 6-14 \$1.00; kids 5 & under free. Free parking. (262) 716-5716; wilmotfleaemarket.net

TUESDAY, SEPTEMBER 9

CHICAGO, IL: Swap-O-Rama, 7am-2pm outdoors at 4200 S. Ashland Ave. Admission: adults \$1.00; seniors 50¢ (708)344-7300

SHIPSHEWANA, IND: Shipshewana Flea Market, 8am-4pm. 345 S. Van Buren St. Outdoor, up to 700 vendors. Free admission; parking \$5. www.shipshewanafleaemarket.com

WEDNESDAY, SEPTEMBER 10

ADAMS, WI: Polish Flea Market's Farmers Market Wednesday, 135 W. Sherman St. Open 11:00-4:00. (608) 403-1133

ALSIP, IL: Tri-State Swap-O-Rama, 7am-2pm outdoors at 4350 West 129th St. Admission: adults \$1.00; seniors 50¢. (708)344-7300

EAGLE RIVER, WI: Wednesday Farmers' Market, Mill St & Michigan St. Hwy 45N, north of the bridge. 8:30am-1:00pm. (715) 477-0645

NEW RICHMOND, WI: Heritage Center Barn Flea Market, 1100 Heritage Dr. Wed, 8-2 & 5-7; Saturdays: 8am-2pm; Sundays: 8-2. 90+yr-old Dairy Barn filled with treasures. Inventory changes weekly. 715-246-3276; nrheritagecenter.org

SHIPSHEWANA, IND: Shipshewana Flea Market, 8am-4pm. 345 S. Van Buren St. Outdoor, up to 700 vendors. Free admission; parking \$5. www.shipshewanafleaemarket.com

SHIPSHEWANA, IND: Weekly Misc. & Antique Auction, 9AM start. 345 S Van Buren St. "Shipshewana Auction Misc. & Antique Building." Live auction with 6-10 Auctioneers selling simultaneously. shipshewanatradingplace.com; (260) 768-4129.

THURSDAY, SEPTEMBER 11

CHICAGO, IL: Swap-O-Rama, 7am-3pm outdoors at 4200 S. Ashland Ave. Admission: adults \$1.00; seniors 50¢ (708)344-7300

FRIDAY, SEPTEMBER 12

MELROSE PARK, IL: Swap-O-Rama, 7am-2pm outdoors at 4600 W. Lake St. Admission: Free (708)344-7300

MINOCQUA, WI: Minocqua Farmers Market, 408 Chicago St., Minocqua Visitor's Bureau and Chamber of Commerce. 8am-1pm. (715) 356-5266. www.minocqua.org.

WISCONSIN DELLS, WI: Wo-Zha-Wa Days with Antique Flea Market, Arts & Crafts Fair & many other activities. Antique Market: Fri-Sat 8-6, Sun 8-3; Arts & Crafts: Fri noon-5, Sat 9-5, Sun 9-3. All outdoors, between Broadway (downtown) & Bowman Park. https://www.wisdells.com/wisconsin-dells-events/wozhawa

SATURDAY, SEPTEMBER 13

ADAMS, WI: 45th Season Adams Flea & Farm Market. 556 S. Main St., Hwy. 13-S, by the railroad tracks. Indoor/Outdoor. Farmer's market area. Free admission. 8:00am-4:00pm (608) 403-5283

ADAMS, WI: Polish Flea Market, 135 W. Sherman St.. Open 8:00-11:00 am. Free Admission & parking. (608) 403-1133

ALSIP, IL: Tri-State Swap-O-Rama, 7am-4pm indoors/outdoors at 4350 West 129th St. Admission: adults \$3.00; seniors \$2.00. (708)344-7300

BELOIT, WI: Downtown Beloit Farmers' Market, 8am-1pm, Downtown Beloit Association, State Street, Grand Avenue & Mill Street Parking Lot.

BERWYN, IL: Summer Flea Market at Joseph C. Vallez Activity Center, 1529 Harlem Ave. 9:00am-3:00pm. (708) 749-4900

CALEDONIA, WI: 7 Mile Fair flea market. Indoor/Outdoor 9am-5pm. Admission: \$3 for 12 & up; \$1.00 Seniors. 2720 W. 7 Mile Rd. www.7milefair.com

CHICAGO, IL: Swap-O-Rama, 7am-4pm Indoors/Outdoors at 4200 S. Ashland Ave. Admission: adults \$3.00; seniors \$2.00 (708)344-7300

HIGHLAND PARK, IL: Highland Park Shindig, Highland Park Community House, 1991 Sheridan Road and The Art Center Highland Park, 1957 Sheridan Road. 75 dealers with art, antiques and vintage on the north shore. Admission at the gate or see www.randolphstreetmarket.com for ticket info.

KENOSHA, WI: Kenosha Public Market outdoors at 625 52nd St. 9:00-2:00. Vendors come with a variety of fresh local products including fruits, vegetables, meats, prepared foods, handmade gifts & more. kenoshapublicmarket.com

MELROSE PARK, IL: Swap-O-Rama, 7am-4pm indoors/outdoors at 4600 W. Lake St. Admission Adults \$3.00; Seniors \$2.00. (708)344-7300

****MUKWONAGO, WI:** 69th Annual Maxwell Street Days Flea Market, Field Park, corner of Hwy. 83 & NN. 8am-5pm; buyers allowed on grounds after 7am. Free admission. Over 650 Sellers! Hosted by Mukwonago American Legion Post 375. 262-363-1501; www.maxwellstreetdays.net

OSHKOSH, WI: Oshkosh Farmers Market, 400 & 500 Blocks of N. Main St. & 100 Block of Church Ave. 8am-12:30pm. Approx. 120 vendors. http://www.osfmi.com

****PRINCETON, WI:** 50th Anniversary Famous Princeton Flea Market! Tree-shaded city park, Hwy. 23/73 (S. Fulton St.). Open at 6am-1pm for vendors and customers. Free admission & parking. Food stand on site. www.princetonwi.com

TOMAHAWK, WI: Farm & Flea Market, Tomahawk's Qualheim's True Value parking lot. 79 Hometown Drive, just north of Tomahawk on the corner of Hwy A an A. 8am-2pm. Facebook: Tomahawk Farm & Flea Market



****UNION GROVE, WI:** Open Air Wisconsin Flea Market. Racine County Fairgrounds, 19805 Durand Ave, Union Grove, WI 53182. Antiques, collectibles, crafts, vintage, produce, gardening, new & old, advertising, furniture, & more! Admission: \$2. Free parking. 7am to 3pm. (715) 526-9769 www.zurkopromotions.com

WAUKESHA, WI: Waukesha Farmer's Market, in downtown Waukesha, in the Waukesha State Bank employee parking lot. 8am to noon. Locally grown in-season produce and flowers, plus bakery canned goods and foods. Facebook: Waukesha Farmers' Market.

WEST ALLIS/MILWAUKEE, WI: Milwaukee Comic Con, Wisconsin State Fairgrounds, Expo Hall C., 640 S. 84th St., West Allis. 10am-5pm. Admission: \$10; kids 12 & under free. Artist alley, vendor booths, panels with guest speakers & celebrity appearances. MCconventions.com

WISCONSIN DELLS, WI: Wo-Zha-Wa Days with Antique Flea Market, Arts & Crafts Fair & many other activities. Antique Market: Fri-Sat 8-6, Sun 8-3; Arts & Crafts: Fri noon-5, Sat 9-5, Sun 9-3. All outdoors, between Broadway (downtown) & Bowman Park. https://www.wisdells.com/wisconsin-dells-events/wozhawa

SUNDAY, SEPTEMBER 14

ADAMS, WI: 45th Season Adams Flea & Farm Market. 556 S. Main St., Hwy. 13-S, by the railroad tracks. Indoor/Outdoor. Farmer's market area. Free admission. 8:00am-4:00pm (608) 403-5283

ADAMS, WI: Polish Flea Market, 135 W. Sherman St.. Open 8:00-11:00 am. Free Admission & parking. (608) 403-1133

ALSIP, IL: Tri-State Swap-O-Rama, 7am-4pm indoors/outdoors at 4350 West 129th St. Admission: adults \$3.00; seniors \$2.00. (708)344-7300

CALEDONIA, WI: 7 Mile Fair flea market. Indoor/Outdoor 9am-5pm. Admission: \$3 for 12 & up; \$1.00 Seniors. 2720 W. 7 Mile Rd. www.7milefair.com

CHICAGO, IL: Swap-O-Rama, 7am-4pm Indoors/Outdoors at 4200 S. Ashland Ave. Admission: adults \$3.00; seniors \$2.00 (708) 344-7300

EAGLE RIVER, WI: Sunday Farmers' Market, Mill St & Michigan St. Hwy 45N, north of the bridge. 10:00am-2:00pm. (715) 477-0645



****FOND DU LAC, WI:** Flea Market, sponsored by Fond du Lac Evening Lions Club. Fond du Lac County Fairgrounds, indoors & outdoors. 8:00-2:00. Adm: \$1.00. fonddulacions.org. 920-204-6864.

HIGHLAND PARK, IL: Highland Park Shindig, Highland Park Community House, 1991 Sheridan Road and The Art Center Highland Park, 1957 Sheridan Road. 75 dealers with art, antiques and vintage on the north shore. Admission at the gate or see www.randolphstreetmarket.com for ticket info.

****JEFFERSON, WI:** Jefferson Bargain Fair Flea Market & Craft Fair. Jefferson Speedway grounds, Hwy. 18; 6 miles W. of Jefferson. 6:30am-2pm. Free Admission. (920) 648-6407 or 648-2705

LICHTFIELD, IL: Lichtfield Pickers Flea & Artist Market, downtown Lichtfield, 400 N. State St. 8am-2pm. Free Admission. 217-324-8147 or e-mail: tourism@cityoflichtfieldil.com.

MELROSE PARK, IL: Swap-O-Rama, 7am-4pm indoors/outdoors at 4600 W. Lake St. Admission Adults \$3.00; Seniors \$2.00. (708)344-7300

****MUKWONAGO, WI:** 69th Annual Maxwell Street Days Flea Market, Field Park, corner of Hwy. 83 & NN. 8am-5pm; buyers allowed on grounds after 7am. Free admission. Over 650 Sellers! Hosted by Mukwonago American Legion Post 375. 262-363-1501; www.maxwellstreetdays.net

PEORIA, IL: Central Illinois Flea Market at the Peoria Speedway, 3520 Farmington Rd. Admission: \$3. Open 9:00am-3:00pm. 200+ spaces available. (309) 339-4471; peoriafleaemarket.com

****SHAWANO, WI:** Shawano Flea Market, 55th year, featuring more than 150 vendors at the Shawano Co. Fairgrounds, 990 E. Green Bay St. Antiques, Collectibles, Crafts, Vintage, Mid Century Modern, Gardening, New & Old, Advertising, Old Toys, & More. 7:00am-4:00pm. Adm: \$2.00. Early buyers before 7am are \$10. (715) 526-9769. www.zurkopromotions.com

WILMOT, WI: Wilmot Flea Market, at the Kenosha County Fairgrounds, 30820 111th St. 7am-2pm. Admission: Adults \$2.00; Seniors & kids 6-14 \$1.00; kids 5 & under free. Free parking. (262) 716-5716; wilmotfleaemarket.net

WISCONSIN DELLS, WI: Wo-Zha-Wa Days with Antique Flea Market, Arts & Crafts Fair & many other activities. Antique Market: Fri-Sat 8-6, Sun 8-3; Arts & Crafts: Fri noon-5, Sat 9-5, Sun 9-3. All outdoors, between Broadway (downtown) & Bowman Park. https://www.wisdells.com/wisconsin-dells-events/wozhawa

CALENDAR OF EVENTS: Shows, Flea Markets & More!

TUESDAY, SEPTEMBER 16

CHICAGO, IL: Swap-O-Rama, 7am-2pm outdoors at 4200 S. Ashland Ave. Admission: adults \$1.00; seniors 50¢ (708)344-7300

SHIPSHEWANA, IND: Shipshewana Flea Market, 8am-4pm. 345 S. Van Buren St. Outdoor, up to 700 vendors. Free admission; parking \$5. www.shipshewanafleamarket.com

WEDNESDAY, SEPTEMBER 17

ADAMS, WI: Polish Flea Market's Farmers Market Wednesday, 135 W. Sherman St. Open 11:00-4:00. (608) 403-1133

ALSIP, IL: Tri-State Swap-O-Rama, 7am-2pm outdoors at 4350 West 129th St. Admission: adults \$1.00; seniors 50¢. (708)344-7300

EAGLE RIVER, WI: Wednesday Farmers' Market, Mill St & Michigan St. Hwy 45N, north of the bridge. 8:30am-1:00pm. (715) 477-0645

NEW RICHMOND, WI: Heritage Center Barn Flea Market, 1100 Heritage Dr. Wed, 8-2 & 5-7; Saturdays: 8am-2pm; Sundays: 8-2. 90+yr-old Dairy Barn filled with treasures. Inventory changes weekly. 715-246-3276; nrheritagecenter.org

SHIPSHEWANA, IND: Shipshewana Flea Market, 8am-4pm. 345 S. Van Buren St. Outdoor, up to 700 vendors. Free admission; parking \$5. www.shipshewanafleamarket.com

SHIPSHEWANA, IND: Weekly Misc. & Antique Auction, 9AM start. 345 S Van Buren St. "Shipshewana Auction Misc. & Antique Building." Live auction with 6-10 Auctioneers selling simultaneously. shipshewanatradingplace.com; (260) 768-4129.

THURSDAY, SEPTEMBER 18

APPLE VALLEY, MN: Dutch Door Vintage, 7570 W. 147th St., 5 miles south of Mall of America, Thurs 9am-7pm, Fri 9-6, Sat 9-5, Sun 11-4. www.hauptantiek.com (612) 860-5660. *THRILL OF THE HAUNT* theme.

CHICAGO, IL: Swap-O-Rama, 7am-3pm outdoors at 4200 S. Ashland Ave. Admission: adults \$1.00; seniors 50¢ (708)344-7300

FRIDAY, SEPTEMBER 19

APPLE VALLEY, MN: Dutch Door Vintage, 7570 W. 147th St., 5 miles south of Mall of America, Thurs 9am-7pm, Fri 9-6, Sat 9-5, Sun 11-4. www.hauptantiek.com (612) 860-5660. *THRILL OF THE HAUNT* theme.

MELROSE PARK, IL: Swap-O-Rama, 7am-2pm outdoors at 4600 W. Lake St. Admission: Free (708)344-7300

MINOCQUA, WI: Minocqua Farmers Market, 408 Chicago St., Minocqua Visitor's Bureau and Chamber of Commerce. 8am-1pm. (715) 356-5266. www.minocqua.org.

SATURDAY, SEPTEMBER 20

ADAMS, WI: 45th Season Adams Flea & Farm Market. 556 S. Main St., Hwy. 13-S, by the railroad tracks. Indoor/Outdoor. Farmer's market area. Free admission. 8:00am-4:00pm (608) 403-5283

ADAMS, WI: Polish Flea Market, 135 W. Sherman St.. Open 8:00-11:00 am. Free Admission & parking. (608) 403-1133

ALSIP, IL: Tri-State Swap-O-Rama, 7am-4pm indoors/outdoors at 4350 West 129th St. Admission: adults \$3.00; seniors \$2.00. (708)344-7300

APPLE VALLEY, MN: Dutch Door Vintage, 7570 W. 147th St., 5 miles south of Mall of America, Thurs 9am-7pm, Fri 9-6, Sat 9-5, Sun 11-4. www.hauptantiek.com (612) 860-5660. *THRILL OF THE HAUNT* theme.

BELOIT, WI: Downtown Beloit Farmers' Market, 8am-1pm, Downtown Beloit Association, State Street, Grand Avenue & Mill Street Parking Lot.

BEAVER DAM, WI: Craft/Flea Market, Dodge County Fairgrounds, Hwy. 33, 3 miles east of Beaver Dam. Open 8am-2pm for customers. Free admission & parking. Rain or shine. dodgecountyfairgrounds.com

CALEDONIA, WI: 7 Mile Fair flea market. Indoor/Outdoor 9am-5pm. Admission: \$3 for 12 & up; \$1.00 Seniors. 2720 W. 7 Mile Rd. www.7milefair.com

CHAMPAGNE, IL: Comic & Toy Show, Marketplace Shopping Center, 2000 North Neil St. 11am-5pm daily. Comics, toys, games, art, cosplay, cards, and more will be a part of this free event. quaddcitycon.com

CHICAGO, IL: Swap-O-Rama, 7am-4pm Indoors/Outdoors at 4200 S. Ashland Ave. Admission: adults \$3.00; seniors \$2.00 (708)344-7300

HUBERTUS, WI: Holy Hill Art Farm Art & Farm Market, 4958 Holy Hill Rd. (Hwy. 167), 2 miles east of Holy Hill Basilica. 9am-4pm. Admission: \$4. Unique Rustic Marketplace ~ Featuring Artists and Farmers with art, vintage & locally made and grown products. Food & beverages available. www.holyhillartfarm.com; 262-224-6153

KENOSHA, WI: Kenosha Public Market outdoors at 625 52nd St. 9:00-2:00. Vendors come with a variety of fresh local products including fruits, vegetables, meats, prepared foods, handmade gifts & more. kenoshapublicmarket.com

KIMBERLY, WI: Flea Market & Fall Craft Fair at Antique Up, 850 E. Maes Ave. 9am-3pm. Food at most markets, plus vendors. Free admission. 715-423-6342

MELROSE PARK, IL: Swap-O-Rama, 7am-4pm indoors/outdoors at 4600 W. Lake St. Admission Adults \$3.00; Seniors \$2.00. (708)344-7300

OSHKOSH, WI: Oshkosh Farmers Market, 400 & 500 Blocks of N. Main St. & 100 Block of Church Ave. 8am-12:30pm. Approx. 120 vendors. <http://www.osfmi.com>

PECATONICA, IL: Semi-Annual The "Pec Thing" Antique Market. Winnebago Co. Fairgrounds, 500 W. 1st St. Sat 8am-5pm; Sun 8am-4pm. Admission: \$5.00; kids 12 & under free. Over 500 sellers, indoor-outdoor. (815)239-1641. www.winnebagoountyfair.com/pec-thing/

****PRINCETON, WI:** 50th Anniversary Famous Princeton Flea Market! Tree-shaded city park, Hwy. 23/73 (S. Fulton St.). Open at 6am-1pm for vendors and customers. Free admission & parking. Food stand on site. www.princetonwi.com

SHIPSHEWANA, IND: Shipshewana Swap Meet, 345 S. Van Buren St. Daylight to 1:00pm. All kinds flea market items: fowl, poultry, small animals, pets, produce, baked goods, plants, antiques & more. Parking: \$5.00. Info: 260-768-4129; shipshewanatradingplace.com

TOMAHAWK, WI: Farm & Flea Market, Tomahawk's Qualheim's True Value parking lot. 79 Hometown Drive, just north of Tomahawk on the corner of Hwy A an A. 8am-2pm. Facebook: Tomahawk Farm & Flea Market

WAUKESHA, WI: Waukesha Farmer's Market, in downtown Waukesha, in the Waukesha State Bank employee parking lot. 8am to noon. Locally grown in-season produce and flowers, plus bakery canned goods and foods. Facebook: Waukesha Farmers' Market.

****WHEATON, IL:** Chicagoland Civil War Collector's Show & Sale, plus Collector Arms (CADA) Show & Sale. DuPage Co. Fairgrounds, 2015 W. Manchester. 9am-4pm. Admission: \$10. Early Buyers at 8am: \$25. Free parking. Civil War, Revolutionary War, WWI, WWI, and many more eras. (715) 526-9769; www.ChicagoCivilWarShow.com

SUNDAY, SEPTEMBER 21

ADAMS, WI: 45th Season Adams Flea & Farm Market. 556 S. Main St., Hwy. 13-S, by the railroad tracks. Indoor/Outdoor. Farmer's market area. Free admission. 8:00am-4:00pm (608) 403-5283

ADAMS, WI: Polish Flea Market, 135 W. Sherman St.. Open 8:00-11:00 am. Free Admission & parking. (608) 403-1133

ALSIP, IL: Tri-State Swap-O-Rama, 7am-4pm indoors/outdoors at 4350 West 129th St. Admission: adults \$3.00; seniors \$2.00. (708)344-7300

APPLE VALLEY, MN: Dutch Door Vintage, 7570 W. 147th St., 5 miles south of Mall of America, Thurs 9am-7pm, Fri 9-6, Sat 9-5, Sun 11-4. www.hauptantiek.com (612) 860-5660. *THRILL OF THE HAUNT* theme.

BLOOMINGTON, IL: 3rd Sunday Market, Interstate Center, 1106 Interstate Dr. 8am-4pm Admission: \$6; 13 & under free. Indoor/outdoor sale features more than 450 top dealers from 17 states. 217-202-2847

CALEDONIA, WI: 7 Mile Fair flea market. Indoor/Outdoor 9am-5pm. Admission: \$3 for 12 & up; \$1.00 Seniors. 2720 W. 7 Mile Rd. www.7milefair.com

CHAMPAGNE, IL: Comic & Toy Show, Marketplace Shopping Center, 2000 North Neil St. 11am-5pm daily. Comics, toys, games, art, cosplay, cards, and more will be a part of this free event. quaddcitycon.com

EAGLE RIVER, WI: Sunday Farmers' Market, Mill St & Michigan St. Hwy 45N, north of the bridge. 10:00am-2:00pm. (715)477-0645

CHICAGO, IL: Swap-O-Rama, 7am-4pm Indoors/Outdoors at 4200 S. Ashland Ave. Admission: adults \$3.00; seniors \$2.00 (708)344-7300

HUBERTUS, WI: Holy Hill Art Farm Art & Farm Market, 4958 Holy Hill Rd. (Hwy. 167), 2 miles east of Holy Hill Basilica. 9am-4pm. Admission: \$4. Unique Rustic Marketplace ~ Featuring Artists and Farmers with art, vintage & locally made and grown products. Food & beverages available. www.holyhillartfarm.com; 262-224-6153

****JEFFERSON, WI:** Jefferson Bargain Fair Flea Market & Craft Fair. Jefferson Speedway grounds, Hwy. 18; 6 miles W. of Jefferson. 6:30am-2pm. Free Admission. (920) 648-6407 or 648-2705

KENOSHA, WI: Kenosha Art Market at Union Park, 4500 Seventh Ave. Free Admission. 10am-2pm. Juried collection of over 70 local artists from a wide variety of disciplines plus live demonstrations, music and food trucks. www.visitkenosha.com

MELROSE PARK, IL: Swap-O-Rama, 7am-4pm indoors/outdoors at 4600 W. Lake St. Admission Adults \$3.00; Seniors \$2.00. (708)344-7300

PECATONICA, IL: Semi-Annual The "Pec Thing" Antique Market. Winnebago Co. Fairgrounds, 500 W. 1st St. Sat 8am-5pm; Sun 8am-4pm. Admission: \$5.00; kids 12 & under free. Over 500 sellers, indoor-outdoor. (815)239-1641. www.winnebagoountyfair.com/pec-thing/

ROSEMONT, IL: Wolff's Flea Market, Allstate Arena, 6920 N. Mannheim. 6am-2pm. Admission: \$3; seniors & children 6-12, \$2. Early Bird before 6am is \$5. Check for updates on Facebook or www.wolffs.com.

****SHAWANO, WI:** Shawano Flea Market, 55th year, featuring more than 150 vendors at the Shawano Co. Fairgrounds, 990 E. Green Bay St. Antiques, Collectibles, Crafts, Vintage, Mid Century Modern, Gardening, New & Old, Advertising, Old Toys, & More. 7:00am-4:00pm. Adm: \$2.00. Early buyers before 7am are \$10. (715) 526-9769. www.zurkopromotions.com

WILMOT, WI: Wilmot Flea Market, at the Kenosha County Fairgrounds, 30820 111th St. 7am-2pm. Admission: Adults \$2.00; Seniors & kids 6-14 \$1.00; kids 5 & under free. Free parking. (262) 716-5716; wilmotfleamarket.net

TUESDAY, SEPTEMBER 23

CHICAGO, IL: Swap-O-Rama, 7am-2pm outdoors at 4200 S. Ashland Ave. Admission: adults \$1.00; seniors 50¢ (708)344-7300

SHIPSHEWANA, IND: Shipshewana Flea Market, 8am-4pm. 345 S. Van Buren St. Outdoor, up to 700 vendors. Free admission; parking \$5. www.shipshewanafleamarket.com

WEDNESDAY, SEPTEMBER 24

ADAMS, WI: Polish Flea Market's Farmers Market Wednesday, 135 W. Sherman St. Open 11:00-4:00. (608) 403-1133

ALSIP, IL: Tri-State Swap-O-Rama, 7am-2pm outdoors at 4350 West 129th St. Admission: adults \$1.00; seniors 50¢. (708)344-7300

EAGLE RIVER, WI: Wednesday Farmers' Market, Mill St & Michigan St. Hwy 45N, north of the bridge. 8:30am-1:00pm. (715) 477-0645

NEW RICHMOND, WI: Heritage Center Barn Flea Market, 1100 Heritage Dr. Wed, 8-2 & 5-7; Saturdays: 8am-2pm; Sundays: 8-2. 90+yr-old Dairy Barn filled with treasures. Inventory changes weekly. 715-246-3276; nrheritagecenter.org

SHIPSHEWANA, IND: Shipshewana Flea Market, 8am-4pm. 345 S. Van Buren St. Outdoor, up to 700 vendors. Free admission; parking \$5. www.shipshewanafleamarket.com

SHIPSHEWANA, IND: Weekly Misc. & Antique Auction, 9AM start. 345 S Van Buren St. "Shipshewana Auction Misc. & Antique Building." Live auction with 6-10 Auctioneers selling simultaneously. shipshewanatradingplace.com; (260) 768-4129.

THURSDAY, SEPTEMBER 25

CHICAGO, IL: Swap-O-Rama, 7am-3pm outdoors at 4200 S. Ashland Ave. Admission: adults \$1.00; seniors 50¢ (708)344-7300

FRIDAY, SEPTEMBER 26

MELROSE PARK, IL: Swap-O-Rama, 7am-2pm outdoors at 4600 W. Lake St. Admission: Free (708) 344-7300

MINOCQUA, WI: Minocqua Farmers Market, 408 Chicago St., Minocqua Visitor's Bureau and Chamber of Commerce. 8am-1pm. (715) 356-5266. www.minocqua.org.

SATURDAY, SEPTEMBER 27

ADAMS, WI: 45th Season Adams Flea & Farm Market. 556 S. Main St., Hwy. 13-S, by the railroad tracks. Indoor/Outdoor. Farmer's market area. Free admission. 8:00am-4:00pm (608) 403-5283

ADAMS, WI: Polish Flea Market, 135 W. Sherman St.. Open 8:00-11:00 am. Free Admission & parking. (608) 403-1133

ALSIP, IL: Tri-State Swap-O-Rama, 7am-4pm indoors/outdoors at 4350 West 129th St. Admission: adults \$3.00; seniors \$2.00. (708)344-7300

BELOIT, WI: Downtown Beloit Farmers' Market, 8am-1pm, Downtown Beloit Association, State Street, Grand Avenue & Mill Street Parking Lot.

CALEDONIA, WI: 7 Mile Fair flea market. Indoor/Outdoor 9am-5pm. Admission: \$3 for 12 & up; \$1.00 Seniors. 2720 W. 7 Mile Rd. www.7milefair.com

CHICAGO, IL: Randolph St. Market. Historic West Loop, 1341 W. Randolph St. 10:00am-5:00pm. Art, antiques and vintage decor, ephemera, vintage and indie designer fashion and jewelry, vinyl, global goods, fancy and fun foods. Admission at the gate or see www.randolphstreetmarket.com for ticket information.

CHICAGO, IL: Swap-O-Rama, 7am-4pm Indoors/Outdoors at 4200 S. Ashland Ave. Admission: adults \$3.00; seniors \$2.00 (708)344-7300

GRAFTON, IL: Riverside Flea Market at The Loading Dock, 401 E. Front St. Sat 9:00-5:00; Sun 9:00-4:00. (618) 556-7951; www.graftonloadingdock.com

KENOSHA, WI: Kenosha Public Market outdoors at 625 52nd St. 9:00-2:00. Vendors come with a variety of fresh local products including fruits, vegetables, meats, prepared foods, handmade gifts & more. kenoshapublicmarket.com

MANITOWOC, WI: Front Lawn Flea Market at Gritty Lane Antique Mall, 3310 Calumet Ave. 10am-4pm. FREE admission. (Vendors welcome as space allows - \$33 or less spaces.) (920) 320-9232; Facebook/[grittylane](https://www.facebook.com/grittylane)

MELROSE PARK, IL: Swap-O-Rama, 7am-4pm indoors/outdoors at 4600 W. Lake St. Admission Adults \$3.00; Seniors \$2.00. (708)344-7300

MIDLAND, MI: Michigan Antique & Collectible Festival, Midland County Fairgrounds, 6905 Eastman Ave. Sat 8-6, Sun 9-4. 800 to 1000 quality dealers on 80 acres and in 7 buildings. Admission: \$10.00; children 11 & under free. 989-687-9001

OMAHA, NE: Omaha Quad Con Comic & Toy Show, Oak View Mall, 3001 S. 144th St. FREE event that takes place during normal mall hours. Video game tournaments, cosplay contest, artists, & lots of vendors full of geeky goodness. quaddcitycon.com

OSHKOSH, WI: Oshkosh Farmers Market, 400 & 500 Blocks of N. Main St. & 100 Block of Church Ave. 8am-12:30pm. Approx. 120 vendors. <http://www.osfmi.com>

****PRINCETON, WI:** 50th Anniversary Famous Princeton Flea Market! Tree-shaded city park, Hwy. 23/73 (S. Fulton St.). Open at 6am-1pm for vendors and customers. Free admission & parking. Food stand on site. www.princetonwi.com

CALENDAR OF EVENTS: Shows, Flea Markets & More!

ST. PAUL, MN: Prime Promotions Antique Spectacular, Minnesota State Fairgrounds, Education Building. 1784 Judson Ave. - 2 miles south of State Hwy. 36. Sat: 8am-5pm; Sun: 10am-3pm. Admission \$10.00. 651-771-3476 www.MNAntiqueShows.com

TOMAHAWK, WI: Farm & Flea Market, Tomahawk's Qualheim's True Value parking lot. 79 Hometown Drive, just north of Tomahawk on the corner of Hwy A an A. 8am-2pm. Facebook: Tomahawk Farm & Flea Market

WAUKESHA, WI: Waukesha Farmer's Market, in downtown Waukesha, in the Waukesha State Bank employee parking lot. 8am to noon. Locally grown in-season produce and flowers, plus bakery canned goods and foods. Facebook: Waukesha Farmers' Market.

SUNDAY, SEPTEMBER 28

ADAMS, WI: 45th Season Adams Flea & Farm Market. 556 S. Main St., Hwy. 13-S, by the railroad tracks. Indoor/Outdoor. Farmer's market area. Free admission. 8:00am-4:00pm (608) 403-5283

ADAMS, WI: Polish Flea Market, 135 W. Sherman St.. Open 8:00-11:00 am. Free Admission & parking. (608) 403-1133

ALSIP, IL: Tri-State Swap-O-Rama, 7am-4pm indoors/outdoors at 4350 West 129th St. Admission: adults \$3.00; seniors \$2.00. (708)344-7300

BARABOO, WI: Baraboo Sunday Market, downtown area, on the square. Rain or shine. 10am-2pm. Vintage, Antique, Artisans, Handmade & Homegrown. 608-448-3490; www.downtownbaraboo.com

CALEDONIA, WI: 7 Mile Fair flea market. Indoor/Outdoor 9am-5pm. Admission: \$3 for 12 & up; \$1.00 Seniors. 2720 W. 7 Mile Rd. www.7milefair.com

CHICAGO, IL: Randolph St. Market. Historic West Loop, 1341 W. Randolph St. 10:00am-5:00pm. Art, antiques and vintage decor, ephemera, vintage and indie designer fashion and jewelry, vinyl, global goods, fancy and fun foods. Admission at the gate or see www.randolphstreetmarket.com for ticket information.

CHICAGO, IL: Swap-O-Rama, 7am-4pm Indoors/Outdoors at 4200 S. Ashland Ave. Admission: adults \$3.00; seniors \$2.00 (708)344-7300

EAGLE RIVER, WI: Sunday Farmers' Market, Mill St & Michigan St. Hwy 45N, north of the bridge. 10:00am-2:00pm. (715) 477-0645

****ELKHORN, WI:** 44th Season Antique & Flea Market. Over 500 inside & outside dealers at the Walworth County Fairgrounds, Hwy. 11 (411 E. Court St.). Open 7am-3pm. Admission: \$5.00; free parking, great food. (414) 525-0820; elkhornantiquefleamarket.com

GRAFTON, IL: Riverside Flea Market at The Loading Dock, 401 E. Front St. Sat 9:00-5:00; Sun 9:00-4:00. (618) 556-7951; www.graftonloadingdock.com

****JEFFERSON, WI:** Jefferson Bargain Fair Flea Market & Craft Fair. Jefferson Speedway grounds, Hwy. 18; 6 miles W. of Jefferson. 6:30am-2pm. Free Admission. (920) 648-6407 or 648-2705

MELROSE PARK, IL: Swap-O-Rama, 7am-4pm indoors/outdoors at 4600 W. Lake St. Admission Adults \$3.00; Seniors \$2.00. (708)344-7300

MIDLAND, MI: Michigan Antique & Collectible Festival, Midland County Fairgrounds, 6905 Eastman Ave. Sat 8-6, Sun 9-4. 800 to 1000 quality dealers on 80 acres and in 7 buildings. Admission: \$10.00; children 11 & under free. 989-687-9001

OMAHA, NE: Omaha Quad Con Comic & Toy Show, Oak View Mall, 3001 S. 144th St. FREE event that takes place during normal mall hours. Video game tournaments, cosplay contest, artists, & lots of vendors full of geeky goodness. quadcitycon.com

ROSEMONT, IL: Wolff's Flea Market, Allstate Arena, 6920 N. Mannheim. 6am-2pm. Admission: \$3; seniors & children 6-12, \$2. Early Bird before 6am is \$5. Check for updates on Facebook or www.wolffs.com.

ST. PAUL, MN: Prime Promotions Antique Spectacular, Minnesota State Fairgrounds, Education Building. 1784 Judson Ave. - 2 miles south of State Hwy. 36. Sat: 8am-5pm; Sun: 10am-3pm. Admission \$10.00. 651-771-3476 www.MNAntiqueShows.com

****SHAWANO, WI:** Shawano Flea Market, 55th year, featuring more than 150 vendors at the Shawano Co. Fairgrounds, 990 E. Green Bay St. Antiques, Collectibles, Crafts, Vintage, Mid Century Modern, Gardening, New & Old, Advertising, Old Toys, & More. 7:00am-4:00pm. Adm: \$2.00. Early buyers before 7am are \$10. (715) 526-9769. www.zurkopromotions.com

WILMOT, WI: Wilmot Flea Market, at the Kenosha County Fairgrounds, 30820 111th St. 7am-2pm. Admission: Adults \$2.00; Seniors & kids 6-14 \$1.00; kids 5 & under free. Free parking. (262) 716-5716; wilmotfleamarket.net

TUESDAY, SEPTEMBER 30

CHICAGO, IL: Swap-O-Rama, 7am-2pm outdoors at 4200 S. Ashland Ave. Admission: adults \$1.00; seniors 50¢ (708)344-7300

SHIPSHEWANA, IND: Shipshewana Flea Market, 8am-4pm. 345 S. Van Buren St. Outdoor, up to 700 vendors. Free admission; parking \$5. www.shipshewanafleamarket.com

WEDNESDAY, OCTOBER 1

ADAMS, WI: Polish Flea Market's Farmers Market Wednesday, 135 W. Sherman St. Open 11:00-4:00. (608) 403-1133

ALSIP, IL: Tri-State Swap-O-Rama, 7am-2pm outdoors at 4350 West 129th St. Admission: adults \$1.00; seniors 50¢. (708)344-7300

EAGLE RIVER, WI: Wednesday Farmers' Market, Mill St & Michigan St. Hwy 45N, north of the bridge. 8:30am-1:00pm. (715) 477-0645

NEW RICHMOND, WI: Heritage Center Barn Flea Market, 1100 Heritage Dr. Wed, 8-2 & 5-7; Saturdays: 8am-2pm; Sundays: 8-2. 90+yr-old Dairy Barn filled with treasures. Inventory changes weekly. 715-246-3276; nrheritagecenter.org

SHIPSHEWANA, IND: Shipshewana Flea Market, 8am-4pm. 345 S. Van Buren St. Outdoor, up to 700 vendors. Free admission; parking \$5. www.shipshewanafleamarket.com

SHIPSHEWANA, IND: Weekly Misc. & Antique Auction, 9AM start. 345 S Van Buren St. "Shipshewana Auction Misc. & Antique Building." Live auction with 6-10 Auctioneers selling simultaneously. shipshewanatradingplace.com; (260) 768-4129.

THURSDAY, OCTOBER 2

CHICAGO, IL: Swap-O-Rama, 7am-3pm outdoors at 4200 S. Ashland Ave. Admission: adults \$1.00; seniors 50¢ (708)344-7300

****WHAT CHEER, IA:** 49th Annual What Cheer Flea Market, at the Keokuk Conty Fairgrounds, 13061 170th St.; I-80, exit 201, 20 miles south on Hwy. 21. Open 7:00am. Early Bird Thursday admission: \$6.00; Adm: \$4.00 Fri/Sat; free on Sunday. www.whatcheerfleamarket.com. (319) 404-4066; Facebook: What Cheer Flea Market.

FRIDAY, OCTOBER 3

MELROSE PARK, IL: Swap-O-Rama, 7am-2pm outdoors at 4600 W. Lake St. Admission: Free (708)344-7300

MINOCQUA, WI: Minocqua Farmers Market, 408 Chicago St., Minocqua Visitor's Bureau and Chamber of Commerce. 8am-1pm. (715) 356-5266. www.minocqua.org.

****WAUKESHA, WI:** 74th Fall Wisconsin Antiques Dealers Assoc. Show, indoors at Waukesha County Expo Center, I-94 to Hwy. J (exit 294), south 1 mile; west to show. 2-Day Show - Friday 10am-6pm; Saturday 10am-4pm. Affordable, time-tested, human-friendly antiques! 59 Quality Dealers from 8 states. Special exhibit: Trick or Treat. Admission: \$8.00, good both days. \$1 Ticket Discount at: www.WisconsinAntiquesDealers.com. Non-profit organization; proceeds benefit grants for historical preservation projects in Wisconsin and the Friends of the Wisconsin Historical Society. Good food. Friday night fish fry! Free parking. ATM on premises. (414) 510-4441; www.WisconsinAntiquesDealers.com

****WHAT CHEER, IA:** 49th Annual What Cheer Flea Market, at the Keokuk Conty Fairgrounds, 13061 170th St.; I-80, exit 201, 20 miles south on Hwy. 21. Open 7:00am. Early Bird Thursday admission: \$6.00; Adm: \$4.00 Fri/Sat; free on Sunday. www.whatcheerfleamarket.com. (319) 404-4066; Facebook: What Cheer Flea Market.

SATURDAY, OCTOBER 4

ADAMS, WI: 45th Season Adams Flea & Farm Market. 556 S. Main St., Hwy. 13-S, by the railroad tracks. Indoor/Outdoor. Farmer's market area. Free admission. 8:00am-4:00pm (608) 403-5283

ADAMS, WI: Polish Flea Market, 135 W. Sherman St.. Open 8:00-11:00 am. Free Admission & parking. (608) 403-1133

ALSIP, IL: Tri-State Swap-O-Rama, 7am-4pm indoors/outdoors at 4350 West 129th St. Admission: adults \$3.00; seniors \$2.00. (708)344-7300

BELOIT, WI: Downtown Beloit Farmers' Market, 8am-1pm, Downtown Beloit Association, State Street, Grand Avenue & Mill Street Parking Lot.

BROOKFIELD, WI: Secret Market, located in beautiful Brookfield Square Mall, 95 N. Moorland Rd. Hours: Saturday 10am-4pm, Sunday 11am-4pm. 90 booths filled with antiques, art, vintage, retro, collectibles, jewelry, toys, clothing, leather. Admission \$1.00. (816) 536-9089

CALEDONIA, WI: 7 Mile Fair flea market. Indoor/Outdoor 9am-5pm. Admission: \$3 for 12 & up; \$1.00 Seniors. 2720 W. 7 Mile Rd. www.7milefair.com

CEDAR FALLS, IA: Quad Con Comic & Toy Show at College Square Mall, 6301 University Ave. A free pop culture celebration inside the Mall. There will be artists, vendors, video game tournaments, & cosplay showcase. 11am-5pm. quadcitycon.com

CHICAGO, IL: Swap-O-Rama, 7am-4pm Indoors/Outdoors at 4200 S. Ashland Ave. Admission: adults \$3.00; seniors \$2.00 (708)344-7300

KENOSHA, WI: Kenosha Public Market outdoors at 625 52nd St. 9:00-2:00. Vendors come with a variety of fresh local products including fruits, vegetables, meats, prepared foods, handmade gifts & more. kenoshapublicmarket.com

MELROSE PARK, IL: Swap-O-Rama, 7am-4pm indoors/outdoors at 4600 W. Lake St. Admission Adults \$3.00; Seniors \$2.00. (708)344-7300

****PRINCETON, WI:** 50th Anniversary Famous Princeton Flea Market! Tree-shaded city park, Hwy. 23/73 (S. Fulton St.). Open at 6am-1pm for vendors and customers. Free admission & parking. Food stand on site. www.princetonwi.com

ST. CHARLES, IL: Kane County Antique Flea Market, Kane County Fairgrounds at 525 S. Randall Road. Up to 400 dealers. Sat 12:00-5:00 pm.; Sun 7-4. Adm: Adults \$6.00; children under 12 free with adult. Free parking. www.kane-countyfleamarket.com. 630-377-2252; 630-708-8911

SUN PRAIRIE, WI: Makers Market at Angell Park, 315 Park St.. 75+ local vendors. 10am-3pm. Admission \$5.00; kids 12 & under free. www.makersmarketsp.com

TOMAHAWK, WI: Farm & Flea Market, Tomahawk's Qualheim's True Value parking lot. 79 Hometown Drive, just north of Tomahawk on the corner of Hwy A an A. 8am-2pm. Facebook: Tomahawk Farm & Flea Market

****WAUKESHA, WI:** 74th Fall Wisconsin Antiques Dealers Assoc. Show, indoors at Waukesha County Expo Center, I-94 to Hwy. J (exit 294), south 1 mile; west to show. 2-Day Show - Friday 10am-6pm; Saturday 10am-4pm. Affordable, time-tested, human-friendly antiques! 59 Quality Dealers from 8 states. Special exhibit: Trick or Treat. Admission: \$8.00, good both days. \$1 Ticket Discount at: www.WisconsinAntiquesDealers.com. Non-profit organization; proceeds benefit grants for historical preservation projects in Wisconsin and the Friends of the Wisconsin Historical Society. Good food. Friday night fish fry! Free parking. ATM on premises. (414) 510-4441; www.WisconsinAntiquesDealers.com

WAUKESHA, WI: Waukesha Art Crawl featuring numerous galleries, gift shops and more in the downtown area. 2pm-8pm. Presented by Waukesha West End Artists. Flyer and map available at: www.waukeshaart.com

WAUKESHA, WI: Waukesha Farmer's Market, in downtown Waukesha, in the Waukesha State Bank employee parking lot. 8am to noon. Locally grown in-season produce and flowers, plus bakery canned goods and foods. Facebook: Waukesha Farmers' Market.

****WHAT CHEER, IA:** 49th Annual What Cheer Flea Market, at the Keokuk Conty Fairgrounds, 13061 170th St.; I-80, exit 201, 20 miles south on Hwy. 21. Open 7:00am. Early Bird Thursday admission: \$6.00; Adm: \$4.00 Fri/Sat; free on Sunday. www.whatcheerfleamarket.com. (319) 404-4066; Facebook: What Cheer Flea Market.

SUNDAY, OCTOBER 5

ADAMS, WI: 45th Season Adams Flea & Farm Market. 556 S. Main St., Hwy. 13-S, by the railroad tracks. Indoor/Outdoor. Farmer's market area. Free admission. 8:00am-4:00pm (608) 403-5283

ADAMS, WI: Polish Flea Market, 135 W. Sherman St.. Open 8:00-11:00 am. Free Admission & parking. (608) 403-1133

ALSIP, IL: Tri-State Swap-O-Rama, 7am-4pm indoors/outdoors at 4350 West 129th St. Admission: adults \$3.00; seniors \$2.00. (708)344-7300

BROOKFIELD, WI: Secret Market, located in beautiful Brookfield Square Mall, 95 N. Moorland Rd. Hours: Saturday 10am-4pm, Sunday 11am-4pm. 90 booths filled with antiques, art, vintage, retro, collectibles, jewelry, toys, clothing, leather. Admission \$1.00. (816) 536-9089

CALEDONIA, WI: 7 Mile Fair flea market. Indoor/Outdoor 9am-5pm. Admission: \$3 for 12 & up; \$1.00 Seniors. 2720 W. 7 Mile Rd. www.7milefair.com

****CEDARBURG, WI:** Cedarburg Maxwell St. Days Flea Market. Firemen's Park, W65N796 Washington Ave. 500 vendor spaces available. Antiques, collectibles, attic & basement treasures, crafters, produce, sports, old toys, rummage, family collections, vintage treasures, and much more! Open 6:00am-2:00pm. Free Admission. cedarburg-firemenspark.com or visit us on Facebook

CHICAGO, IL: Swap-O-Rama, 7am-4pm Indoors/Outdoors at 4200 S. Ashland Ave. Admission: adults \$3.00; seniors \$2.00 (708)344-7300

CHICAGO, IL: Modern Vintage Chicago Fashion & Home shopping event. Ravenswood Event Center, 4021 N. Ravenswood Ave. 10am-5pm. See and shop a stunning selection of vintage clothing, jewelry, handbags and accessories from 1890's-2000's as well as global goods, decorative arts, vinyl and more! Admission at the gate or see www.randolphstreetmarket.com.

EAGLE RIVER, WI: Sunday Farmers' Market, Mill St & Michigan St. Hwy 45N, north of the bridge. 10:00am-2:00pm. (715)477-0645

FORT DODGE, IA: Fort Dodge Comic & Toy Show - Quad Con Fort Frenzy, 3232 1st Ave. S. 11am-5pm. Free event. Comics, games, toys, Pokemon, art, cosplay. quadcitycon.com

****JEFFERSON, WI:** Jefferson Bargain Fair Flea Market & Craft Fair. Jefferson Speedway grounds, Hwy. 18; 6 miles W. of Jefferson. 6:30am-2pm. Free Admission. (920) 648-6407 or 648-2705

MELROSE PARK, IL: Swap-O-Rama, 7am-4pm indoors/outdoors at 4600 W. Lake St. Admission Adults \$3.00; Seniors \$2.00. (708)344-7300

OSHKOSH, WI: Oshkosh Farmers Market, 400 & 500 Blocks of N. Main St. & 100 Block of Church Ave. 8am-12:30pm. Approx. 120 vendors. <http://www.osfmi.com>

ROSEMONT, IL: Wolff's Flea Market, Allstate Arena, 6920 N. Mannheim. 6am-2pm. Admission: \$3; seniors & children 6-12, \$2. Early Bird before 6am is \$5. Check for updates on Facebook or www.wolffs.com.

ST. CHARLES, IL: Kane County Antique Flea Market, Kane County Fairgrounds at 525 S. Randall Road. Up to 400 dealers. Sat 12:00-5:00 pm.; Sun 7-4. Adm: Adults \$6.00; children under 12 free with adult. Free parking. www.kane-countyfleamarket.com. 630-377-2252; 630-708-8911

CALENDAR OF EVENTS: Shows, Flea Markets & More!

****SHAWANO, WI:** Shawano Flea Market & 15th Annual Fall Harvest Festival & Car Show, featuring more than 150 vendors at the Shawano Co. Fairgrounds, 990 E. Green Bay St. Antiques, Collectibles, Crafts, Vintage, Mid Century Modern, Gardening, New & Old, Advertising, Old Toys, & More. 7:00am-4:00pm. Adm: \$2.00. Early buyers before 7am are \$10. *Car Show Registration: \$10. (715) 526-9769. www.zurkopromotions.com

UNION GROVE, WI: Fall at the Fairgrounds, Racine County Fairgrounds, 19805 Durand Ave. 160+ artists, makers, vintage curators, pop up boutiques, food trucks, live music and more. Admission: \$5.00; kids 12 & under free. www.recraftandrelc.com

WAUKESHA, WI: Scale Auto Hobby & Toy Show, Waukesha County Expo Center Forum Building, 1000 Northview Rd. 10am-2pm. Over 150 tables featuring primarily auto related merchandise such as Die Cast Cars, Model Kits, and Racing Memorabilia. Admission: Adults \$10.00; Kids under 12 free with adult. Preview Admission at 7:30am: \$25.00. (262) 366-1314; www.uniqueeventsshows.com

****WHAT CHEER, IA:** 49th Annual What Cheer Flea Market, at the Keokuk Conty Fairgrounds, 13061 170th St.; I-80, exit 201, 20 miles south on Hwy. 21. Open 7:00am. Early Bird Thursday admission: \$6.00; Adm: \$4.00 Fri/Sat; free on Sunday. www.whatcheerfleamarket.com. (319) 404-4066; Facebook: What Cheer Flea Market.

WILMOT, WI: Wilmot Flea Market, at the Kenosha County Fairgrounds, 30820 111th St. 7am-2pm. Admission: Adults \$2.00; Seniors & kids 6-14 \$1.00; kids 5 & under free. Free parking. (262) 716-5716; wilmotfleamarket.net

TUESDAY, OCTOBER 7

CHICAGO, IL: Swap-O-Rama, 7am-2pm outdoors at 4200 S. Ashland Ave. Admission: adults \$1.00; seniors 50¢ (708)344-7300

WEDNESDAY, OCTOBER 8

ADAMS, WI: Polish Flea Market's Farmers Market Wednesday, 135 W. Sherman St. Open 11:00-4:00. (608) 403-1133

ALSIP, IL: Tri-State Swap-O-Rama, 7am-2pm outdoors at 4350 West 129th St. Admission: adults \$1.00; seniors 50¢. (708)344-7300

EAGLE RIVER, WI: Wednesday Farmers' Market, Mill St & Michigan St. Hwy 45N, north of the bridge. 8:30am-1:00pm. (715) 477-0645

NEW RICHMOND, WI: Heritage Center Barn Flea Market, 1100 Heritage Dr. Wed, 8-2 & 5-7; Saturdays: 8am-2pm; Sundays: 8-2. 90+yr-old Dairy Barn filled with treasures. Inventory changes weekly. 715-246-3276; nrheritagecenter.org

SHIPSHEWANA, IND: Weekly Misc. & Antique Auction, 9AM start. 345 S Van Buren St. "Shipshewana Auction Misc. & Antique Building." Live auction with 6-10 Auctioneers selling simultaneously. shipshewanatradingplace.com; (260) 768-4129.

THURSDAY, OCTOBER 9

APPLE VALLEY, MN: Dutch Door Vintage, 7570 W. 147th St., 5 miles south of Mall of America, Thurs 9am-7pm, Fri 9-6, Sat 9-5, Sun 11-4. www.hauptantiek.com (612) 860-5660. *HARVEST MOON* theme.

CHICAGO, IL: Swap-O-Rama, 7am-3pm outdoors at 4200 S. Ashland Ave. Admission: adults \$1.00; seniors 50¢ (708)344-7300

FRIDAY, OCTOBER 10

APPLE VALLEY, MN: Dutch Door Vintage, 7570 W. 147th St., 5 miles south of Mall of America, Thurs 9am-7pm, Fri 9-6, Sat 9-5, Sun 11-4. www.hauptantiek.com (612) 860-5660. *HARVEST MOON* theme.

MELROSE PARK, IL: Swap-O-Rama, 7am-2pm outdoors at 4600 W. Lake St. Admission: Free (708)344-7300

MINOCQUA, WI: Minocqua Farmers Market, 408 Chicago St., Minocqua Visitor's Bureau and Chamber of Commerce. 8am-1pm. (715) 356-5266. www.minocqua.org.

SATURDAY, OCTOBER 11

ADAMS, WI: 45th Season Adams Flea & Farm Market. 556 S. Main St., Hwy. 13-S, by the railroad tracks. Indoor/Outdoor. Farmer's market area. Free admission. 8:00am-4:00pm (608) 403-5283

ADAMS, WI: Polish Flea Market, 135 W. Sherman St.. Open 8:00-11:00 am. Free Admission & parking. (608) 403-1133

ALSIP, IL: Tri-State Swap-O-Rama, 7am-4pm indoors/outdoors at 4350 West 129th St. Admission: adults \$3.00; seniors \$2.00. (708)344-7300

APPLE VALLEY, MN: Dutch Door Vintage, 7570 W. 147th St., 5 miles south of Mall of America, Thurs 9am-7pm, Fri 9-6, Sat 9-5, Sun 11-4. www.hauptantiek.com (612) 860-5660. *HARVEST MOON* theme.

BARABOO, WI: Fall Fair on the Square, downtown Baraboo. 9am-4pm. Nearly 200 artists and crafters, photographers, food, live entertainment, farmers market and kids activities. Shops and restaurants will be open with outdoor seating available on the courthouse lawn. 9am-4pm. downtownbaraboo.com

BEAVER DAM, WI: Craft/Flea Market, Dodge County Fairgrounds, Hwy. 33, 3 miles east of Beaver Dam. Open 8am-2pm for customers. Free admission & parking. Rain or shine. dodgecountyfairgrounds.com

CALEDONIA, WI: 7 Mile Fair flea market. Indoor/Outdoor 9am-5pm. Admission: \$3 for 12 & up; \$1.00 Seniors. 2720 W. 7 Mile Rd. www.7milefair.com

CHICAGO, IL: Swap-O-Rama, 7am-4pm Indoors/Outdoors at 4200 S. Ashland Ave. Admission: adults \$3.00; seniors \$2.00 (708)344-7300

DAVISBURG, MI: Michigan Antique & Collectible Festival, Springfield Oaks County Park, 12451 Andersonville Rd. Sat 8-6, Sun 9-4. 800 to 1000 quality dealers on 80 acres and in 7 buildings. Admission: \$10.00; Children 11 & under free. 989-687-9001; miantiquefestival.com

****GRAYSLAKE, IL:** Grayslake Antique Market, Lake County Fairgrounds, 1060 E. Peterson Rd., Sat 9-4; Sun 9-3., Admission: \$8.00; Early Buyers Sat. 8-9am \$25; 12 & under free w/adult. Free Parking (715) 526-9769. <https://www.facebook.com/GrayslakeAntiqueMarket/>; www.zurkopromotions.com

HUBERTUS, WI: Holy Hill Art Farm Art & Farm Market, 4958 Holy Hill Rd. (Hwy. 167), 2 miles east of Holy Hill Basilica. 9am-4pm. Admission: \$4. Unique Rustic Marketplace ~ Featuring Artists and Farmers with art, vintage & locally made and grown products. Food & beverages available. www.holyhillartfarm.com; 262-224-6153

JOLIET, IL: Comic & Toy Show at Louis Joliet Mall, 3340 Mall Loop Dr. Free event during normal mall hours with over 50 vendor/artist spots featuring anime, original art, vintage toys, action figures, video games, comics & more plus cosplay showcase. quadcitycon.com

KENOSHA, WI: Kenosha Public Market outdoors at 625 52nd St. 9:00-2:00. Vendors come with a variety of fresh local products including fruits, vegetables, meats, prepared foods, handmade gifts & more. kenoshapublicmarket.com

MELROSE PARK, IL: Swap-O-Rama, 7am-4pm indoors/outdoors at 4600 W. Lake St. Admission Adults \$3.00; Seniors \$2.00. (708)344-7300

OSHKOSH, WI: Oshkosh Farmers Market, 400 & 500 Blocks of N. Main St. & 100 Block of Church Ave. 8am-12:30pm. Approx. 120 vendors. <http://www.osfmi.com>

PEORIA, IL: Central Illinois Flea Market at the Peoria Speedway, 3520 Farmington Rd. Admission: \$3. Open 9:00am-3:00pm. 200+ spaces available. (309) 339-4471; peoriafleamarket.com

****PRINCETON, WI:** 50th Anniversary Famous Princeton Flea Market! Tree-shaded city park, Hwy. 23/73 (S. Fulton St.). Open at 6am-1pm for vendors and customers. Free admission & parking. Food stand on site. www.princetonwi.com

TOMAHAWK, WI: Farm & Flea Market, Tomahawk's Qualheim's True Value parking lot. 79 Hometown Drive, just north of Tomahawk on the corner of Hwy A an A. 8am-2pm. Facebook: Tomahawk Farm & Flea Market

****WAUKESHA, WI (MILWAUKEE):** Wisconsin Rummage-O-Rama, Waukesha Co. Expo, 1000 Northview Rd., Waukesha Sat 9-5; Sun 9-4. Admission: \$5.00; Seniors & Military \$3; Children under 12 Free. FREE Parking. Shop a huge variety of quality antiques, collectibles, crafts, misc. & much more, all under 1 roof! Bargains galore & a whole lot more! 414-481-5859. Facebook: wirummageorama

WAUKESHA, WI: Waukesha Farmer's Market, in downtown Waukesha, in the Waukesha State Bank employee parking lot. 8am to noon. Locally grown in-season produce and flowers, plus bakery canned goods and foods. Facebook: Waukesha Farmers' Market.

SUNDAY, OCTOBER 12

ADAMS, WI: 45th Season Adams Flea & Farm Market. 556 S. Main St., Hwy. 13-S, by the railroad tracks. Indoor/Outdoor. Farmer's market area. Free admission. 8:00am-4:00pm (608) 403-5283

ADAMS, WI: Polish Flea Market, 135 W. Sherman St.. Open 8:00-11:00 am. Free Admission & parking. (608) 403-1133

ALSIP, IL: Tri-State Swap-O-Rama, 7am-4pm indoors/outdoors at 4350 West 129th St. Admission: adults \$3.00; seniors \$2.00. (708)344-7300

APPLE VALLEY, MN: Dutch Door Vintage, 7570 W. 147th St., 5 miles south of Mall of America, Thurs 9am-7pm, Fri 9-6, Sat 9-5, Sun 11-4. www.hauptantiek.com (612) 860-5660. *HARVEST MOON* theme.

CALEDONIA, WI: 7 Mile Fair flea market. Indoor/Outdoor 9am-5pm. Admission: \$3 for 12 & up; \$1.00 Seniors. 2720 W. 7 Mile Rd. www.7milefair.com

CHICAGO, IL: Swap-O-Rama, 7am-4pm Indoors/Outdoors at 4200 S. Ashland Ave. Admission: adults \$3.00; seniors \$2.00 (708)344-7300

DAVISBURG, MI: Michigan Antique & Collectible Festival, Springfield Oaks County Park, 12451 Andersonville Rd. Sat 8-6, Sun 9-4. 800 to 1000 quality dealers on 80 acres and in 7 buildings. Admission: \$10.00; Children 11 & under free. 989-687-9001; miantiquefestival.com

EAGLE RIVER, WI: Sunday Farmers' Market, Mill St & Michigan St. Hwy 45N, north of the bridge. 10:00am-2:00pm. (715)477-0645

****GRAYSLAKE, IL:** Grayslake Antique Market, Lake County Fairgrounds, 1060 E. Peterson Rd., Sat 9-4; Sun 9-3., Admission: \$8.00; Early Buyers Sat. 8-9am \$25; 12 & under free w/adult. Free Parking (715) 526-9769. <https://www.facebook.com/GrayslakeAntiqueMarket/>; www.zurkopromotions.com

HUBERTUS, WI: Holy Hill Art Farm Art & Farm Market, 4958 Holy Hill Rd. (Hwy. 167), 2 miles east of Holy Hill Basilica. 9am-4pm. Admission: \$4. Unique Rustic Marketplace ~ Featuring Artists and Farmers with art, vintage & locally made and grown products. Food & beverages available. www.holyhillartfarm.com; 262-224-6153

****JEFFERSON, WI:** Jefferson Bargain Fair Flea Market & Craft Fair. Jefferson Speedway grounds, Hwy. 18; 6 miles W. of Jefferson. 6:30am-2pm. Free Admission. (920) 648-6407 or 648-2705

JOLIET, IL: Comic & Toy Show at Louis Joliet Mall, 3340 Mall Loop Dr. Free event during normal mall hours with over 50 vendor/artist spots featuring anime, original art, vintage toys, action figures, video games, comics & more plus cosplay showcase. quadcitycon.com

LICHTFIELD, IL: Lichtfield Pickers Flea & Artist Market, downtown Lichtfield, 400 N. State St. 8am-2pm. Free Admission. 217-324-8147 or e-mail: tourism@cityoflichtfieldil.com.

MELROSE PARK, IL: Swap-O-Rama, 7am-4pm indoors/outdoors at 4600 W. Lake St. Admission Adults \$3.00; Seniors \$2.00. (708)344-7300

PEORIA, IL: Central Illinois Flea Market at the Peoria Speedway, 3520 Farmington Rd. Admission: \$3. Open 9:00am-3:00pm. 200+ spaces available. (309) 339-4471; peoriafleamarket.com

ROSEMONT, IL: Wolff's Flea Market, Allstate Arena, 6920 N. Mannheim. 6am-2pm. Admission: \$3; seniors & children 6-12, \$2. Early Bird before 6am is \$5. Check for updates on Facebook or www.wolffs.com.

SANDWICH, IL: Sunday at Sandwich Antique Flea Market, Sandwich Fairgrounds, 1401 Suydam Rd. 8am-3pm. Admission: \$5.00; children 12 & under free. Early Bird \$10 from 7:00-8:00am. Monthly market of quality antiques, collectibles, repurposed. 630-983-8039

****WAUKESHA, WI (MILWAUKEE):** Wisconsin Rummage-O-Rama, Waukesha Co. Expo, 1000 Northview Rd., Waukesha Sat 9-5; Sun 9-4. Admission: \$5.00; Seniors & Military \$3; Children under 12 Free. FREE Parking. Shop a huge variety of quality antiques, collectibles, crafts, misc. & much more, all under 1 roof! Bargains galore & a whole lot more! 414-481-5859. Facebook: wirummageorama

WILMOT, WI: Wilmot Flea Market, at the Kenosha County Fairgrounds, 30820 111th St. 7am-2pm. Admission: Adults \$2.00; Seniors & kids 6-14 \$1.00; kids 5 & under free. Free parking. (262) 716-5716; wilmotfleamarket.net

TUESDAY, OCTOBER 14

CHICAGO, IL: Swap-O-Rama, 7am-2pm outdoors at 4200 S. Ashland Ave. Admission: adults \$1.00; seniors 50¢ (708)344-7300

WEDNESDAY, OCTOBER 15

ADAMS, WI: Polish Flea Market's Farmers Market Wednesday, 135 W. Sherman St. Open 11:00-4:00. (608) 403-1133

ALSIP, IL: Tri-State Swap-O-Rama, 7am-2pm outdoors at 4350 West 129th St. Admission: adults \$1.00; seniors 50¢. (708)344-7300

NEW RICHMOND, WI: Heritage Center Barn Flea Market, 1100 Heritage Dr. Wed, 8-2 & 5-7; Saturdays: 8am-2pm; Sundays: 8-2. 90+yr-old Dairy Barn filled with treasures. Inventory changes weekly. 715-246-3276; nrheritagecenter.org

SHIPSHEWANA, IND: Weekly Misc. & Antique Auction, 9AM start. 345 S Van Buren St. "Shipshewana Auction Misc. & Antique Building." Live auction with 6-10 Auctioneers selling simultaneously. shipshewanatradingplace.com; (260) 768-4129.

THURSDAY, OCTOBER 16

CHICAGO, IL: Swap-O-Rama, 7am-3pm outdoors at 4200 S. Ashland Ave. Admission: adults \$1.00; seniors 50¢ (708)344-7300

FRIDAY, OCTOBER 17

MELROSE PARK, IL: Swap-O-Rama, 7am-2pm outdoors at 4600 W. Lake St. Admission: Free (708)344-7300

MINOCQUA, WI: Minocqua Farmers Market, 408 Chicago St., Minocqua Visitor's Bureau and Chamber of Commerce. 8am-1pm. (715) 356-5266. www.minocqua.org.

SATURDAY, OCTOBER 18

ONLINE: 51st Fall Fox Valley Antiques Show & Sale ONLINE, Continuasly Saturday 10am to Sunday 6pm Central. Visit booths online, dealers from across the US and Canada. Country to formal, folk art to fine art, 17th century to modernism, garden to holiday, textiles, jewelry, toys & more. Produced by the Chicago Suburban Antiques Dealers Assn. Details at: FoxValleyAntiquesShow.com.

ADAMS, WI: 45th Season Adams Flea & Farm Market. 556 S. Main St., Hwy. 13-S, by the railroad tracks. Indoor/Outdoor. Farmer's market area. Free admission. 8:00am-4:00pm (608) 403-5283

ADAMS, WI: Polish Flea Market, 135 W. Sherman St.. Open 8:00-11:00 am. Free Admission & parking. (608) 403-1133

ALSIP, IL: Tri-State Swap-O-Rama, 7am-4pm indoors/outdoors at 4350 West 129th St. Admission: adults \$3.00; seniors \$2.00. (708)344-7300

CALEDONIA, WI: 7 Mile Fair flea market. Indoor/Outdoor 9am-5pm. Admission: \$3 for 12 & up; \$1.00 Seniors. 2720 W. 7 Mile Rd. www.7milefair.com

CHICAGO, IL: Swap-O-Rama, 7am-4pm Indoors/Outdoors at 4200 S. Ashland Ave. Admission: adults \$3.00; seniors \$2.00 (708)344-7300

FOND DU LAC, WI: Central Wis. Gun Collectors Association Show, Fond du Lac Co. Fairgrounds, 495 Martin Ave. Sat 8-5; Sun 8-2. Admission: Saturday-\$10.00; Sunday-\$5.00. (920) 634-9909; centralwisconsingun.org

CALENDAR OF EVENTS: Shows, Flea Markets & More!

****GREEN BAY, WI:** Witches Night Out Craft Show, Resch Center Expo, 840 Armed Forces Drive, Ashwaubenon. Dress in your best costume and shop vendors who offer amazing handmade goods & more! Costume contest for adults & kids. 3:00-8:00 pm. Admission: \$5; children 12 & younger free with adult. (715) 526-9769; www.zurkopromotions.com

KENOSHA, WI: Kenosha Public Market outdoors at 625 52nd St. 9:00-2:00. Vendors come with a variety of fresh local products including fruits, vegetables, meats, prepared foods, handmade gifts & more. kenoshapublicmarket.com

MANITOWOC, WI: Front Lawn Flea Market at Gritty Lane Antique Mall, 3310 Calumet Ave. 10am-4pm. FREE admission. (Vendors welcome as space allows - \$33 or less spaces.) (920)320-9232; [Facebook/grittylane](https://facebook.com/grittylane)

MELROSE PARK, IL: Swap-O-Rama, 7am-4pm indoors/outdoors at 4600 W. Lake St. Admission Adults \$3.00; Seniors \$2.00. (708)344-7300

OSHKOSH, WI: Oshkosh Farmers Market, 400 & 500 Blocks of N. Main St. & 100 Block of Church Ave. 8am-12:30pm. Approx. 120 vendors. <http://www.osfmi.com>

****SOUTH MILWAUKEE, WI:** Vintage Glass Collectors of Wisconsin 47th Annual Milwaukee Vintage Glass Show & Sale, Knights of Columbus Hall, 732 Badger Ave, South Milwaukee, WI 53172. Sat 10-5; Sun 11-3. Free glass I.D., Reference Library, Door Prizes. Admission \$6.00, good both days. Info: Glen (414) 551-2017; <https://www.facebook.com/degsow>

SHIPSHEWANA, IND: Shipshewana Swap Meet, 345 S. Van Buren St. Daylight to 1:00pm. All kinds flea market items: fowl, poultry, small animals, pets, produce, baked goods, plants, antiques & more. Parking: \$5.00. Info: 260-768-4129; shipshewanatradingplace.com

TOMAHAWK, WI: Farm & Flea Market, Tomahawk's Qualheim's True Value parking lot. 79 Hometown Drive, just north of Tomahawk on the corner of Hwy A an A. 8am-2pm. Facebook: Tomahawk Farm & Flea Market

WAUKESHA, WI: Waukesha Farmer's Market, in downtown Waukesha, in the Waukesha State Bank employee parking lot. 8am to noon. Locally grown in-season produce and flowers, plus bakery canned goods and foods. Facebook: Waukesha Farmers' Market.

SUNDAY, OCTOBER 19

ONLINE: 51st Fall Fox Valley Antiques Show & Sale ONLINE, Continuasly Saturday 10am to Sunday 6pm Central. Visit booths online, dealers from across the US and Canada. Country to formal, folk art to fine art, 17th century to modernism, garden to holiday, textiles, jewelry, toys & more. Produced by the Chicago Suburban Antiques Dealers Assn. Details at: FoxValleyAntiquesShow.com.

ADAMS, WI: 45th Season Adams Flea & Farm Market. 556 S. Main St., Hwy. 13-S, by the railroad tracks. Indoor/Outdoor. Farmer's market area. Free admission. 8:00am-4:00pm (608) 403-5283

ADAMS, WI: Polish Flea Market, 135 W. Sherman St.. Open 8:00-11:00 am. Free Admission & parking. (608) 403-1133

ALSIP, IL: Tri-State Swap-O-Rama, 7am-4pm indoors/outdoors at 4350 West 129th St. Admission: adults \$3.00; seniors \$2.00. (708)344-7300

BLOOMINGTON, IL: 3rd Sunday Market, Interstate Center, 1106 Interstate Dr. 8am-4pm Admission: \$6; 13 & under free. Indoor/outdoor sale features more than 450 top dealers from 17 states. 217-202-2847

CALEDONIA, WI: 7 Mile Fair flea market. Indoor/Outdoor 9am-5pm. Admission: \$3 for 12 & up; \$1.00 Seniors. 2720 W. 7 Mile Rd. www.7milefair.com

CHICAGO, IL: Swap-O-Rama, 7am-4pm Indoors/Outdoors at 4200 S. Ashland Ave. Admission: adults \$3.00; seniors \$2.00 (708)344-7300

COUNTRYSIDE, IL: Countryside Collectors Classic Toy Show, Local 150 Union Hall Building, 6200 Joliet Rd. 10am-2pm. Admission: \$10.00; Kids 12 & under free with adult. Preview admission at 7:30am: \$25.00. Over 150 tables of models, die cast, new & vintage toys & more. (262) 366-1314; www.uniqueeventsshows.com

FOND DU LAC, WI: Central Wis. Gun Collectors Association Show, Fond du Lac Co. Fairgrounds, 495 Martin Ave. Sat 8-5; Sun 8-2. Admission: Saturday-\$10.00; Sunday-\$5.00. (920) 634-9909; centralwisconsinangun.org

****JEFFERSON, WI:** Jefferson Bargain Fair Flea Market & Craft Fair. Jefferson Speedway grounds, Hwy. 18; 6 miles W. of Jefferson. 6:30am-2pm. Free Admission. (920) 648-6407 or 648-2705

KENOSHA, WI: Kenosha Art Market at Union Park, 4500 Seventh Ave. Free Admission. 10am-2pm. Juried collection of over 70 local artists from a wide variety of disciplines plus live demonstrations, music and food trucks. www.visitkenosha.com

MELROSE PARK, IL: Swap-O-Rama, 7am-4pm indoors/outdoors at 4600 W. Lake St. Admission Adults \$3.00; Seniors \$2.00. (708)344-7300

ROSEMONT, IL: Wolff's Flea Market, Allstate Arena, 6920 N. Mannheim. 6am-2pm. Admission: \$3; seniors & children 6-12, \$2. Early Bird before 6am is \$5. Check for updates on Facebook or www.wolffs.com.

ST CHARLES, MO: Comic & Toy Show at Steel Shop Athletics & Events Centre, 49 Lawrence St. 10am-4pm. An affordable, family friendly event focusing on comics, art, video games, cosplay, toys, board games, sci fi, pop vinyls, & more. \$5 Entry, free after 2:30. quadcitycon.com

****SOUTH MILWAUKEE, WI:** Vintage Glass Collectors of Wisconsin 47th Annual Milwaukee Vintage Glass Show & Sale, Knights of Columbus Hall, 732 Badger Ave, South Milwaukee, WI 53172. Sat 10-5; Sun 11-3. Free glass I.D., Reference Library, Door Prizes. Admission \$6.00, good both days. Info: Glen (414) 551-2017; <https://www.facebook.com/degsow>

TUESDAY, OCTOBER 21

CHICAGO, IL: Swap-O-Rama, 7am-2pm outdoors at 4200 S. Ashland Ave. Admission: adults \$1.00; seniors 50¢ (708)344-7300

WEDNESDAY, OCTOBER 22

ADAMS, WI: Polish Flea Market's Farmers Market Wednesday, 135 W. Sherman St. Open 11:00-4:00. (608) 403-1133

ALSIP, IL: Tri-State Swap-O-Rama, 7am-2pm outdoors at 4350 West 129th St. Admission: adults \$1.00; seniors 50¢. (708)344-7300

NEW RICHMOND, WI: Heritage Center Barn Flea Market, 1100 Heritage Dr. Wed, 8-2 & 5-7; Saturdays: 8am-2pm; Sundays: 8-2. 90+yr-old Dairy Barn filled with treasures. Inventory changes weekly. 715-246-3276; nrheritagecenter.org

SHIPSHEWANA, IND: Weekly Misc. & Antique Auction & Special Antique Toy Auction, 9AM start. 345 S Van Buren St. "Shipshewana Auction Misc. & Antique Building." Live auction with 6-10 Auctioneers selling simultaneously. shipshewanatradingplace.com; (260) 768-4129.

THURSDAY, OCTOBER 23

CHICAGO, IL: Swap-O-Rama, 7am-3pm outdoors at 4200 S. Ashland Ave. Admission: adults \$1.00; seniors 50¢ (708)344-7300

FRIDAY, OCTOBER 24

GRAYSLAKE, IL: Chicagoland Antique Advertising, Slot Machine & Jukebox Show, Lake County Fairgrounds Event Center, 1060 E. Peterson Rd. Friday Early Bird Preview & Dealer Setup 7-4, \$50; Saturday 9-3, \$10. Kids free. (419) 508-3645. Ticket info at: www.chicagolandshow.com

MANITOWOC, WI: Gritty Lane Eerie Eve, 3310 Calumet Ave. 6-9pm on select Fridays. Dimmed lights where you use a flashlight or miner's light headband to search for the special deals announced at the event. FREE. Everyone gets a glow necklace or bracelet so the other shoppers can see you hunting! (920) 320-9232; [Facebook/grittylane](https://facebook.com/grittylane).

MELROSE PARK, IL: Swap-O-Rama, 7am-2pm outdoors at 4600 W. Lake St. Admission: Free (708)344-7300

****OSHKOSH, WI:** 22nd Annual Sporting and Advertising Antique Show. Sunnyview Expo Center, 500 E. County Rd. Y in Oshkosh WI. 50 booths of quality antiques: Sporting, Advertising, Collectibles, Coins/Currency, Fine China/Art, Jewelry, Postcards, Fishing & Hunting, Military, Toys, Furniture. Friday 9-6; Saturday 9-3. Admission \$5; Under 16 free. Free parking. For more information please visit our website at www.antiquesportingandadvertisingshow.com; (920) 252-0319

SATURDAY, OCTOBER 25

ADAMS, WI: 45th Season Adams Flea & Farm Market. 556 S. Main St., Hwy. 13-S, by the railroad tracks. Indoor/Outdoor. Farmer's market area. Free admission. 8:00am-4:00pm (608) 403-5283

ADAMS, WI: Polish Flea Market, 135 W. Sherman St.. Open 8:00-11:00 am. Free Admission & parking. (608) 403-1133

ALSIP, IL: Tri-State Swap-O-Rama, 7am-4pm indoors/outdoors at 4350 West 129th St. Admission: adults \$3.00; seniors \$2.00. (708)344-7300

CALEDONIA, WI: 7 Mile Fair flea market. Indoor/Outdoor 9am-5pm. Admission: \$3 for 12 & up; \$1.00 Seniors. 2720 W. 7 Mile Rd. www.7milefair.com

CHICAGO, IL: Swap-O-Rama, 7am-4pm Indoors/Outdoors at 4200 S. Ashland Ave. Admission: adults \$3.00; seniors \$2.00 (708)344-7300

DES MOINES, IA: Quad Con Comic & Toy Show at Merle Hay Mall, 3800 Merle Hay Rd. Quad Con is a family friendly event featuring over 100 vendor/artists with comics, art, video games, cosplay, toys, board games, sci-fi, pop vinyls, & more. Free Entry! quadcitycon.com

GRAFTON, IL: Riverside Flea Market at The Loading Dock, 401 E. Front St. Sat 9:00-5:00; Sun 9:00-4:00. (618) 556-7951; www.graftonloadingdock.com

GRAYSLAKE, IL: Chicagoland Antique Advertising, Slot Machine & Jukebox Show, Lake County Fairgrounds Event Center, 1060 E. Peterson Rd. Friday Early Bird Preview & Dealer Setup 7-4, \$50; Saturday 9-3, \$10. Kids free. (419) 508-3645. Ticket info at: www.chicagolandshow.com

KENOSHA, WI: Kenosha Public Market outdoors at 625 52nd St. 9:00-2:00. Vendors come with a variety of fresh local products including fruits, vegetables, meats, prepared foods, handmade gifts & more. kenoshapublicmarket.com

MELROSE PARK, IL: Swap-O-Rama, 7am-4pm indoors/outdoors at 4600 W. Lake St. Admission Adults \$3.00; Seniors \$2.00. (708)344-7300

****OSHKOSH, WI:** 22nd Annual Sporting and Advertising Antique Show. Sunnyview Expo Center, 500 E. County Rd. Y in Oshkosh WI. 50 booths of quality antiques: Sporting, Advertising, Collectibles, Coins/Currency, Fine China/Art, Jewelry, Postcards, Fishing & Hunting, Military, Toys, Furniture. Friday 9-6; Saturday 9-3. Admission \$5; Under 16 free. Free parking. For more information please visit our website at www.antiquesportingandadvertisingshow.com; (920) 252-0319

OSHKOSH, WI: Oshkosh Farmers Market, 400 & 500 Blocks of N. Main St. & 100 Block of Church Ave. 8am-12:30pm. Approx. 120 vendors. <http://www.osfmi.com>

SHIPSHEWANA, IND: Ship-Chic Craft & Vintage Show, at Shipshewana Auction Misc. & Antique Building, 345 S. Van Buren St.. 9am-3pm. We are gathering sellers from all over the Midwest to meet up for a show featuring gifts, vintage items, home decor, crafts, clothing, accessories, beauty products, jewelry, baked goods, signs and more! Old stuff, new stuff and awesome stuff all picked with quality in mind. Come shop authentic products and meet the folks who are selling them. Admission: \$5; kids 14 & under are free. Free parking. <https://shipshewanatradingplace.com>; (260) 768-4129

TOMAHAWK, WI: Farm & Flea Market, Tomahawk's Qualheim's True Value parking lot. 79 Hometown Drive, just north of Tomahawk on the corner of Hwy A an A. 8am-2pm. Facebook: Tomahawk Farm & Flea Market

WAUKESHA, WI: Waukesha Farmer's Market, in downtown Waukesha, in the Waukesha State Bank employee parking lot. 8am to noon. Locally grown in-season produce and flowers, plus bakery canned goods and foods. Facebook: Waukesha Farmers' Market.

****WHEATON, IL:** Annual Spook-tacular Haunted Halloween Flea Market, 3pm to Midnight. DuPage Co. Fairgrounds, 2015 W. Manchester Rd. Shop in costume. Ghoulish encounters, celebrity & comic book guests & more! Admission: \$10.00; Children 12 & under free w/adult. (715) 526-9769; www.zurkopromotions.com

SUNDAY, OCTOBER 26

ADAMS, WI: 45th Season Adams Flea & Farm Market. 556 S. Main St., Hwy. 13-S, by the railroad tracks. Indoor/Outdoor. Farmer's market area. Free admission. 8:00am-4:00pm (608) 403-5283

ADAMS, WI: Polish Flea Market, 135 W. Sherman St.. Open 8:00-11:00 am. Free Admission & parking. (608) 403-1133

ALSIP, IL: Tri-State Swap-O-Rama, 7am-4pm indoors/outdoors at 4350 West 129th St. Admission: adults \$3.00; seniors \$2.00. (708)344-7300

BARABOO, WI: Baraboo Sunday Market, downtown area, on the square. Rain or shine. 10am-2pm. Vintage, Antique, Artisans, Handmade & Homegrown. 608-448-3490; www.downtownbaraboo.com

CALEDONIA, WI: 7 Mile Fair flea market. Indoor/Outdoor 9am-5pm. Admission: \$3 for 12 & up; \$1.00 Seniors. 2720 W. 7 Mile Rd. www.7milefair.com

CHICAGO, IL: Swap-O-Rama, 7am-4pm Indoors/Outdoors at 4200 S. Ashland Ave. Admission: adults \$3.00; seniors \$2.00 (708)344-7300

COUNTRYSIDE, IL: 1st Chicago Bottle Club Annual Show & Sale at Holiday Inn Chicago SW, 6201 Joliet Rd. 9am-2pm. Admission: Adults \$5; children under 16 free. Free appraisals. <https://www.1stchicagobottleclub.com/bottle-show>

DES MOINES, IA: Quad Con Comic & Toy Show at Merle Hay Mall, 3800 Merle Hay Rd. Quad Con is a family friendly event featuring over 100 vendor/artists with comics, art, video games, cosplay, toys, board games, sci-fi, pop vinyls, & more. Free Entry! quadcitycon.com

GRAFTON, IL: Riverside Flea Market at The Loading Dock, 401 E. Front St. Sat 9:00-5:00; Sun 9:00-4:00. (618) 556-7951; www.graftonloadingdock.com

MELROSE PARK, IL: Swap-O-Rama, 7am-4pm indoors/outdoors at 4600 W. Lake St. Admission Adults \$3.00; Seniors \$2.00. (708)344-7300

MONTICELLO, WI: 46th Annual Native American Indian Artifact Show, held at Monticello School, 334 S. Main St. 8:00am-3:00pm. Admission: \$2 for 14 years & older. Over 80 tables of artifacts on display or for sale, including points, stone, bone, copper artifacts, prints, books, pottery, jewelry, rugs and a whole lot more. Experts on hand to identify your artifacts. Boy Scout Troop #106 hosts lunch stand. For more information contact Steve or Janet Gobeli 608-329-4781.

ROSEMONT, IL: Wolff's Flea Market, Allstate Arena, 6920 N. Mannheim. 6am-2pm. Admission: \$3; seniors & children 6-12, \$2. Early Bird before 6am is \$5. Check for updates on Facebook or www.wolffs.com.

ST CHARLES, IL: 52nd Year Chicago Toy Show, Kane County Fairgrounds, 525 S. Randall Rd. 600+ exhibitors of antique toys and dolls. 8am-3pm. Admission: \$10, 12 & under free; Free Parking. 847-800-3009; www.chicagotoy-show.com

TUESDAY, OCTOBER 28

CHICAGO, IL: Swap-O-Rama, 7am-2pm outdoors at 4200 S. Ashland Ave. Admission: adults \$1.00; seniors 50¢ (708)344-7300

WEDNESDAY, OCTOBER 29

ADAMS, WI: Polish Flea Market's Farmers Market Wednesday, 135 W. Sherman St. Open 11:00-4:00. (608) 403-1133

ALSIP, IL: Tri-State Swap-O-Rama, 7am-2pm outdoors at 4350 West 129th St. Admission: adults \$1.00; seniors 50¢. (708)344-7300

SHIPSHEWANA, IND: Weekly Misc. & Antique Auction, 9AM start. 345 S Van Buren St. "Shipshewana Auction Misc. & Antique Building." Live auction with 6-10 Auctioneers selling simultaneously. shipshewanatradingplace.com; (260) 768-4129.

THURSDAY, OCTOBER 30

CHICAGO, IL: Swap-O-Rama, 7am-3pm outdoors at 4200 S. Ashland Ave. Admission: adults \$1.00; seniors 50¢ (708)344-7300

ANTIQUE SHOP DIRECTORY

All Shops/Malls Sell *Yesteryear* (unless marked with an *)

• ILLINOIS •

ANTIOCH

Wilmot Heritage Antiques & Gifts

One of the largest dealers of Fenton Art Glass in the Midwest. We specialize in old & new Fenton Glass. Also featuring Polish Pottery, new Aladdin Lamps, Mosser Glass, Carnival & Depression glass. 2 Storefronts: 400 & 402 Lake St. (Downtown). Open Tu, W, Th, Sat 11-5; Fri 1-5. (847) 838-6788.

BLUE ISLAND

Three Sisters Antique Mall*

60 Dealers - 2 Floors.
13042 S. Western Ave.
Blue Island, IL 60406
(708) 597-3331
Open 7 Days a Week 11:00 am-5:00 pm.

MARENGO

Bulldog Antiques

Not a mall...but a really great shop with "real" antiques. We take pride in showing pre-1970s Antiques and vintage collectibles...no Beanie Babies! Lots of signs, petroliana, cameras, neon, clocks, breweriana, tins, smalls. You won't be disappointed visiting Bulldog Antiques at 505 N. State St. Open weekends only: Friday, Saturday and Sunday 11:00 - 5:00, May-Oct. bulldogantiques.net

ST. CHARLES

Antique Market I

Since 1982, we have provided a variety of antiques and vintage finds including glassware, china, lighting fixtures, clocks, clothing, coins, jewel-ry, military, lamps, games, pottery, furniture, books, postcards and other paper items, posters, records, and much more. We are open every day from 10:00 to 5:00, 362 days each year. ANTIQUE MARKET I, 11 N. Third St., St. Charles, Illinois; (630) 377-1868; Website: AntiqueMarketOne.com; Facebook: Antique Market I.

STOCKTON

Antiques Etcetera*

A restored farm house filled with 10 rooms of Antiques and Collectables. A multi dealer store offering: Glassware, China, Pottery, Crockery, Jewelry, Books, Artwork, Primitives, Toys, Furniture, Tools, Buttons, Marbles, Lighting and many other items. Open 10:00-4:00 Wed-Mon. Located midway between Freeport and Galena Il. 841 E North Ave (Hwy 20 East) Stockton, Ill 61085 (815) 947-3173 PO Box 231

WOODSTOCK

Roscoe Woodstock Antique Mall

35,000 sq. ft. of QUALITY Antiques. Open 7 days a week 10-5. Specializing in early coin-op, slots, jukeboxes, Petroliana, advertising, and everything you could dream of finding in a "real" antique mall. Check us out on Facebook. (815) 334-8960. 890 Lake Ave., Woodstock, IL.

• INDIANA •

SHIPSHEWANA

Shipshewana Trading Place Auction & Flea Market

Midwest's Largest Outdoor Flea Market, Weekly Antique, Live-stock & Horse Auctions! The Shipshewana Flea Market is open Tuesdays & Wednesdays, May 3 through September 28, 2022 from 8am-4pm EST, plus special holiday and weekend markets. The Shipshewana Miscellaneous & Antique Auction is held every Wednesday, starting at 9:00 am in the Miscellaneous & Antique Building. Shipshewana Swap Meets are held on Select Saturdays. See our website for more: shipshewanatradingplace.com. Auctions and Flea Market Info: 260-768-4129. 345 S. Van Buren St., Shipshewana, IN.

• MINNESOTA •

CANNON FALLS

Country Side Antique Mall

55+ Dealers - 12,000 sq. ft. of Quality Antiques. 1161 4th St. So., Cannon Falls, midway between Rochester and the Twin Cities. Open Mon.-Sat. 9:30 to 5, Sun. 11 to 5:30. (507) 263-0352. We post weekly on Facebook - Follow us!



ROCHESTER

Old Rooster Antiques

15 Dealers of quality antiques and collectibles including china, glassware, pottery, tools, kitchen collectibles, primitives, military, jewelry, lighting and furniture, Doll Repair, lamp parts and repro hardware available. Furniture Basement Now Open! "Something for everyone from the novice to the seasoned collector." 106 N. Broadway, Rochester, MN 55906. 507-287-6228



• WISCONSIN •

APPLETON

Memories Antique Mall

OPEN DAILY 10-6! Over 15,000 square feet on one level. Located conveniently at the intersection of Highway 41 and Highway N in Little Chute. Our dedicated vendors consistently bring in new-found treasures, giving us a large selection! You can find Collectibles, Vintage Ephemera, Pop Culture Items and Antiques, all under one roof. Find us on Facebook, too! www.memorieslittlchute.com 920-788-5553 400 Randolph Drive, Appleton, WI, 54913

AUBURNDALE

Cider Mill Antiques

Established in 1973, we are a general line antiques shop. Located at 4594 County Hwy P (old US Hwy. 10), 3 miles E. of the village of Auburndale. Open daily, Tues-Sun 10-5; closed Mon. Many other area shops. Stop in to browse! cidermillantiqueshop.com; cidermillhwy10@hotmail.com; (715) 207-3511.

BARABOO

EYE OF THE BEHOLDER

Antiques, Curiosities, Art*

We are located 1/2 block off the square on Oak St. in beautiful downtown Baraboo Wisconsin. Stop in and check out our quality antiques, curiosities, local artisans' works, collectibles and many other unique and unusual items. We have something for everyone. See our Facebook page at Eye of the Beholder Baraboo for current hours or call (608) 356-3526. 610 1/2 Oak St. Baraboo WI.

BEAVER DAM

Beaver Dam Antique Mall

General line of antiques, including books, glassware, Depression, dolls, jewelry, cookie jars, quilts, stringholders and furniture in unique, three-level, wood floor & tin-ceilinged surroundings. 60+ Dealers; dealer inquiries welcome. 142 Front St. (Bus. 151 & Hwy. 33). Open 10-5 daily. Dark on holidays. (920) 887-1116.

BLANCHARDVILLE

Junk & Disorderly Antiques

Antiques, Vintage, Collectibles, Crafts, Military. 408 S. Main St. Call for hours. (608) 523-2433.

BRISTOL

Benson Corners Twin Antique Malls

On Hwy 50 (75th St.) just west of the intersection of Hwys. 45 & 50. Mall #1 is 7,000 sq. ft. Mall #2 is 11,000 sq. ft. Both are filled with antiques & collectibles with a total of 200-plus dealers. Open 7 days a week 10am-5pm. Look for the twin 25 ft x 15 ft American flags. Mall #1 (262) 857-2581; Mall #2 (262) 857-9456. Facebook: Benson Corners Antique Mall. Email: BensonCorners@gmail.com

BROOKFIELD

Secret Market

Secret Market in Brookfield Square Mall, 95 N. Moorland Rd. Wide variety of Antiques, Vintage, Retro, Collectibles, Jewelry, Toys, Art, Vintage Clothing, Handbags, Hats, Leather Goods. 90+ Booths. Show dates are listed in Yesteryear's Calendar of Events: One weekend each month, Saturdays 10am-4pm, Sundays 11am-4pm. Information: (816) 536-9089. Follow us on Facebook: SecretMarketBrookfieldSquare.

DELAFIELD

Rickety Robin Antiques

General line of antiques, including furniture, glassware, jewelry, books and collectibles. (Other shops in the area, too!) 703 Milwaukee St. Open Daily 10am to 5pm, Sunday by chance; rrobinantq@wi.rr.com; (262) 646-8870; www.ricketyrobinantiques.com

DE PERE

Bosse's News Depot

Get your monthly copy of Yesteryear at Bosse's!
107 S. Broadway, (920) 432-8647.

EAU CLAIRE

Antique Emporium*

Midwest's largest selection of antique prints, bronze statuary, also books, pottery and glassware. 508 Water St. Open Fri.-Sat. 10:00am-5:00pm or by appointment. (715) 832-2494.



SHOP OWNERS:

For the Meager Sum of

➡ **ONLY \$1.00 PER WEEK** ⬅

(\$52 per year), your shop will be listed in this **Directory for a Full Year!**

A 12-Month mailed subscription to *Yesteryear* is also included!

➡ **ON A LIMITED BUDGET?** ⬅

ACT NOW to include your shop in our
EXTENSIVE & ECONOMICAL Antique Shop & Mall Guide!

Your listing also appears on our Website: www.yesteryearpublications.com

Our directory is used monthly by hundreds of serious collectors & dealers as they travel!

****OR, Ask about our \$90 Listing, which includes 10 copies of Yesteryear EACH MONTH that you can sell or give to your customers, as you like!**

ACT TODAY!

Contact Mary or Rich at Yesteryear:
608-297-7755; email: yesteryearantiques@frontier.com

ANTIQUE SHOP DIRECTORY

All Shops/Malls Sell *Yesteryear* (unless marked with an *)

GREEN BAY

American Antiques & Jewelry

Largest selection of Vintage Jewelry in Wisconsin. NEW LOCATION - 2545 W. Mason St. Green Bay, WI 54303 - DOUBLE THE SIZE! Visit our website: AAandJ.com. Open Mon. Wed., Thurs., Fri. 9:30am-5:30pm, Tues 9:30-7:00; Sat. 9:30am-4pm. (920) 498-0111.

Antique Mall of Greater Green Bay

Great variety! 50+ booths Great location - High visibility on I-41 frontage rd with 50k+ vehicles passing daily, just a few exits south of Lambeau Field. What we call 3 Venues - 1 location. Antique Mall featuring a wide variety of antiques, vintage and collectibles & more. Then visit the 250 ft walkway out back featuring 20 more vendors offering a wide display of great old stuff. It's fun too. Both open 7 days: Sunday and Monday 10 - 6; Tuesday thru Saturday 12 - 8 and often earlier. And now flea markets have returned to Green Bay the 2nd Saturday of the month 8 - 2 and are free this season to sellers and shoppers alike. Plenty of room for vendors of all sorts. All found at 1358 Mid Valley Dr., De Pere, WI. We are on the west side frontage rd of I-41. Coming up from the south, exit Scheuring Rd off Interstate 41, cross over the highway and take your first right. Coming down from the north, exit Main Ave off interstate 41 and continue straight ahead. You will be on Mid Valley Dr. Information 920-421-8833. E-mail anntiques@live.com. Follow us on Facebook: www.facebook.com/antiquemallofgreengreenbay.

GREENLEAF

Wrightstown Antique Gallery*

Antiques, Victorian Furniture, Glassware, Clocks, Advertising, Lighting and Collectibles. 7142 Shanty Rd., Greenleaf, WI. Open Wed.-Thurs.-Fri. 11a.m.-5p.m., Sat/Sun. by appointment or chance, (920) 532-4308.

KAUKAUNA

Look Back In Time*

Large selection of Antiques & Collectibles, including furniture, glassware, crocks and much more! 112 E. 2nd St. Open Tues.-Sat 10am-5pm, Sun 10am-3pm; closed Mon. (920) 759-1985.



LA CROSSE

Antique Center of LaCrosse

Over 70 booths covering 3 floors of antiques & collectibles. LaCrosse's oldest antique mall. Downtown-110 S. 3rd St. Open Mon.-Sat. 9 to 5:30, Sun. 11 to 5:30p.m.. (608) 782-6533. www.antiquecenteroflacrosse.com

Caledonia Street Antique Mall LLC

30+ Dealers featuring toys, furniture, glassware, beer items & signs, LP's, railroad items, also a nice selection of collectibles. 1215 Caledonia St. Open Mon.-Sat. 10 to 5, Sun. 11 to 4:30. (608) 782-8443.



Antiques Mall of Madison

Antiques, primitives and collectibles by many prominent dealers. 18,000 sq. ft. of display space w/125+ dealers! 4748 Cottage Grove Rd. Open Every Day—Mon, Tues, Wed, & Fri 10-6, Thur 10-8, Sat 10-5, Sun 11-5. (608) 222-2049. A Show Every Day! www.antiquesmadison.com

Janet's Antiques

Fine 18th and 19th Century Furniture and Accessories, including Cut Glass and Fine China. 3800 University Ave. Open 11am-7pm, Monday-Saturday. (608) 238-3300.

MANITOWOC

Gritty Lane Antique Mall

and The ALLEY Thrift Shop

8000 sq ft hosting 90+ vendors of antiques, collectibles, crafts and curiosities with a separate area for THRIFT. 3310 Calumet Ave., 11-6 Daily, 920.320.9232, grittylane@gmail.com. One accessible floor! Details at Facebook/grittylane.

*Visit on the 10th of every month for 10% off the ENTIRE store (some vendors even more!).

*Join us 6x/yr (fall, winter) for "Gritty Lane Eerie Eve" on a Friday after hours 6-9 pm. Shop under dimmed lights with your flashlight to find the special deals offered by several vendors. 10/24/25, 11/21/25, 12/19/25.

*In the warmer months we present the "Front Lawn Flea Market" on Saturdays. Up to another 40 new vendors. 10-4 outside/till 6 inside. 5/17, 6/7, 6/28, 7/19, 8/9, 9/6, 9/27, 10/18.

See you soon!!

MILTON

Goodrich Antiques & Vintage Uniques*

Quaint Antique Shop located in Historic 1867 Italianate house. Consignments welcome - furniture, collectibles, vintage clothing & jewelry. 742 East Madison Ave. Open Fri-Sat 10-5; Sunday 12-5. (608) 868-3651. See us on Facebook.

MINOCQUA

Island City Antique Market*

Northern Wisconsin's Newest Antique Marketplace! We welcome you to visit our dealer's displays of fine antiques and collectibles. 8661 Hwy. 51-N, between Paul Bunyan's & McDonald's. Current OPEN Hours are Noon to 4 PM, Friday/Saturday/Sunday & Monday ONLY at this time. (715) 356-7003.

Monroe

Monroe Antique Mall

Three floors offering antiques, vintage & collectible items: primitives, glass, toys, coins & bills, books galore, lots of jewelry, fancy stones and stone jewelry, crocks, MCM clothing, handbags and hats...and the list goes on. Come see us any time. We participate in the twice-yearly, 400-shop SHOP HOP and the Wine Walk in the spring and fall. Standard Hours: Mon-Sat 10-4; Sundays 12-4, but often still open afterward and we can make appointments. We periodically purchase items, also. 1003 16th Ave. on the NW corner of the historic square (608) 328-8000. www.Facebook.com/MonroeAntiqueMall



SHOP OWNERS

I Advise You To Note:

For only \$1.00 per week (\$52 per year)
your shop will be listed in this

**Directory AND on our
Website for a Full Year!**

A 12-month mailed subscription to Yesteryear is included!

• • • ➤ *Want More?* ◀ • • •

For only \$90 per year, your shop will be

LISTED AS ABOVE, PLUS...

*each month you will receive 10 copies
of each issue! These are your*

BEST ADVERTISING BUYS!

CONTACT US FOR COMPLETE DETAILS!

yesteryearantiques@frontier.com
608-297-7755

pdf form on our website at: antiqueswisconsin.com

OCONOMOWOC
Fox Lake Country Antiques

Over 100 Dealers and 16,000 sq. ft. on one level! Well-lit, wide aisles, wheelchair access., free parking. Bus tours welcome. Located downtown at 201 N. Fowler St. - Fowler St. & Hwy. 16 (Wisconsin Ave.). Open 7 Day A Week 10a.m.-5p.m. (262) 560-0890.

PARDEEVILLE

Pardeeville Wisconsin Antiques Mall*

One of Wisconsin's BEST antique malls! 10,000+ SF; two levels; 95+ quality dealers w/fabulous displays. Clean, cozy & comfortable w/unsurpassed variety...we just keep getting better! Ample parking. 30 mins. N. of Madison, 103 Industrial Dr. 10am-4pm 6 days/week, Closed Wednesdays. (608) 429-9393. Barb & Matt Kitson. pardeevilleantiques.com

PLYMOUTH

The Shoppes on Mill Street

Antiques, Collectibles, Coins, Toys, Vintage Clothing, Jewelry. 412 East Mill Street. Open Monday thru Saturday 10am to 5pm, Sundays 12noon to 5pm. (920) 892-8500, theshoppesonmillstreet.wordpress.com. E-mail: theshoppes@frontier.com

PORT WASHINGTON

Antiques at Gordon's

Est. in 1970, 5,000 sq. ft. store. Old fashioned shop filled with great antiques! Come see us! Call ahead during Winter weather. 2275 N. Port Washington Rd. Located on Hwy. 32, just South of Port Washington. Open 10-5 every day. (262) 377-4313.

PRINCETON

See Our Display Ads on Page 24!

Woolbright's River City Antique Mall, Inc.

Multi-dealer Antique Mall, specializing in high-end antique furniture. Located just across the street from the Princeton Flea Market/City Park, 328 S. Fulton St. (Hwy. 23/73). Open 7 days 10-5; 7:30am on Flea Market Saturdays. (920) 295-3475.

MNM Antique Mall

Directly across the street from Princeton Flea Market/City Park in large building dedicated to antiques & collectibles. 501-A S. Fulton St. Open 7 Days a Week. 10am - 4:30pm. (920) 295-0176; www.MNMAntiqueMall.com.

SCANDINAVIA

Trading Company Antiques*

Welcome. Here at Trading Company Antiques you can find many quality antiques, vintage and collectible items as well as fishing, automotive, hunting, stoneware, military, jewelry, lanterns, decoys, crocks, railroad items, farming items, autographs and sports cards/memorabilia. We are located on Hwy 49 between Iola and Scandinavia, WI. We are open Friday and Saturday from 10:30-5:00 and Sunday from 10:30-4:00. (920) 450-6043

SHAWANO

Bottle House Antiques*

40+ Dealers featuring collectibles, antiques, vintage & repurposed. All booths on one level with easy accessibility. LOVE THE HUNT, ENJOY THE FIND! 701 S. Main St. in Shawano. Open Tuesday thru Sunday 10-5; Monday 1-5. (715) 853-8722

STEVENS POINT

Call It New/Call It Antique*

60+ dealers quality antiques & collectibles combine with our consignment & resale center to entertain your entire family! Enjoy browsing 3 levels at this unique destination. Ice cream shop & restaurants nearby. Downtown square, overlooking the Wis. River. 823 Main St., Tues-Sat 10-5; Sun 11-4; Closed Mondays. FB: Call it New/Call it Antique; email: CallitNewCallitAntique1@gmail.com

THREE LAKES

The Winds of Time

Located at 1690 Superior St./Hwy. 45 in downtown Three Lake, WI. Antiques, Collectibles, Art and General Line of Antiques - Prints, Glass, Elegant Glassware, Uranium Glass, Clothing, Iron Collectibles, Lamps, Furniture, Paintings, Lighting, Pottery, Paper Items, Clocks, Victorian, Mid-Century Modern - and more to come! Open Fri-Sat 10:00-4:00; Sunday 10:00-2:00; or by chance or appointment. Call (715) 617-4310.

TOMAH

Antique Mall of Tomah

68 dealers of Quality Antiques & Furniture at affordable prices, for beginner or advanced collector. 1510 Eaton Ave, easy on/off I-90/94 (#143/Hwy. 21-E. off I-94). Open 7 Days a Week. (608) 372-7853. Dealers Welcome! email: info@antiquemalloftomah.com

TOMAHAWK

The Old Towne Mall*

15+ UNIQUE ANTIQUE VENDORS, as well as vinyl records, vintage clothing, MCM, greeting cards, gourmet foods & candy, candles, comics, jewelry, toys and more items added every day! 206 W. Wisconsin Ave., Downtown Tomahawk. Open M-F 10-5, Sat 10-3, Sun 10-2. Find us on Facebook!

WATERTOWN

Clara's Antiques

Two stories of merchandise displayed by over 100+ vendors, located in the historic Merchants Bank building. Estate Sale Services available. Consignments welcome. Vendor space & locked showcases available. 100 E. Main St. Open Tues-Sat 10-5. (920) 262-2007.



WAUKESHA

Waukesha Antique Mall

Now featuring over 10,000 square feet of shopping. We offer over 84 unique and quality dealers. You're certain to find that special treasure, perfect gift, or a welcome addition to your home. 1427 E. Racine Ave. Open 10am-5pm every day. (Closed Christmas, Thanksgiving & Easter) (262) 524-0600. Please Like us on Facebook.

WAUTOMA

Wautoma Antique Mall

Shop vendors across the state with our Brand New Antique Mall, with expansion coming by Fall! Something for everyone! N2492 Yoder Lane or 13th Gateway, Wautoma, WI 54982. Open Wednesday-Monday 10:00-5:00 (Closed Tuesday). Phone (920) 765-9253. Facebook: Wautoma Antique Mall.

WEST SALEM

Historic Salem

Now Reopening shop in historic home built in 1859 after being closed for several years. Furniture, collectables, newspapers, records, comic books, magazines, glassware, pictures, paintings, Presidential pictures, political pins and posters, stamps and over 1,800 used books (by subject and author). Historic Salem, 99 East Jefferson Street, just off I-90. Open Monday-Saturday 1:00-5:00 pm. Phone (608) 518-8566.



MARKETPLACE

A group of Coca-Cola collectors has formed a new "Wisconsin Chapter" of the international Coca-Cola Collectors Club!

Watch for information on our website:
witcccc.org
or contact Jean Rehse at:
cocacolajean@sbcglobal.net



HAVE SOMETHING TO BUY-SELL-TRADE?

Low Classified Ad Rates - 20¢ per word!
(\$4.00 minimum charge)

Bold Face Type add \$1.00 per month.

All Classified Ads Must Be Prepaid.

Type or clearly print your ad and submit with payment to:
Yesteryear, PO Box 306, Montello, WI 53949





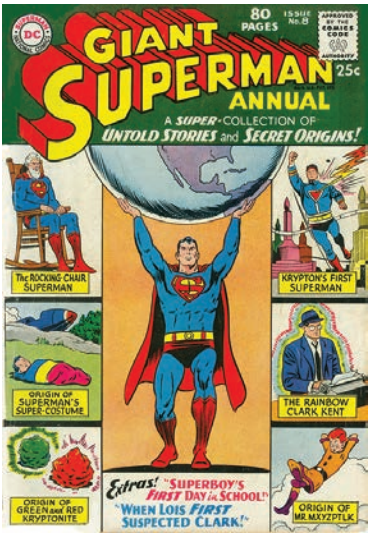
Superman made his debut in Action Comics #1 (June, 1938). (This is the cover of the 1970s reprint, not the six-million-dollar original!) \$10-15.



Giant Superman Annual #1, first of the popular compendiums (August, 1964). \$50-75.



Sci-fi themes were highlighted in Giant Superman #6 (January, 1965). \$20-25.



A selection of "untold stories" were featured in Giant Superman Annual #8 (Winter 1963-64). \$20-25.



The "Golden Age" meets the "Silver Age": reprints of early "Superman" stories were featured in Giant Superman #183 (January, 1966). \$20-25.



Superman's super-hideaway, "The Fortress of Solitude" took center stage in Giant Superman #187 (June, 1966). \$20-25.



Silver Age "Superboy" stories, collected in Super-Spectacular DC-21 (October, 1973). \$15-20.



He has lots of unusual pals: Superboy And His Super-Friends #129 (May, 1966). \$15-20.



"Supergirl" (Superman's cousin) was the star of "a comic first—a complete book-length novel!" Action Comics Presents Supergirl #360 (March-April, 1968). \$20-25.



An attack of jealousy strikes Lois Lane (once again) in Superman's Girl Friend Lois Lane #31 (February, 1962). \$15-20.



Jealousy again rears its ugly head: Superman's Girl Friend Lois Lane #44 (October, 1963). \$15-20.



Jimmy Olsen finds himself in another yet precarious situation. Superman's Pal Jimmy Olsen #67 (March, 1963). \$15-20.



Even supporting characters eventually rated their own "annuals". Superman's Pal Jimmy Olsen Giant Annual #113 (August-September 1968). \$15-20.



Two super-stars team up: Giant World's Finest Starring Superman & Batman #170 (October-November, 1967). \$15-20.



This time around, "Batman" gets top billing: Giant World's Finest Presents Batman & Superman #188 (November, 1969). \$15-20.



Superman makes a cameo cover appearance: Wonder Woman Super-Spectacular #211. The issue mixed new stories with vintage "Golden" and "Silver Age" Wonder Woman adventures. (April-May, 1974). \$15-20.



The gang's all here: The Superman Family #166. (September, 1974). \$15-20.



He's come a long way since 1938: 400th anniversary issue of Action Comics, issued as the "Silver Age" of Superman came to a close (May, 1971). \$10-15.



The "Silver Age" of comicdom meets the "Golden Age" in World's Greatest Super-Heroes Super-Spectacular #6 (1971). \$20-25.

For A Delightful Antiquing Experience Discover Princeton

PRINCETON is located on State Hwys. 23/73 in Green Lake County

Green Bay ●

Wisconsin ●

Delis ●

PRINCETON ●

Madison ●

Milwaukee ●

• MID-WISCONSIN'S ANTIQUE CENTER •

Visit Dozens of Antique and Unique Shops in the Historic Downtown Water Street Area, All Around Town, and the Surrounding Countryside!

Princeton Area Chamber of Commerce, PO Box 45, Princeton, WI 54968

920-295-3877 • www.princetonwi.com • email: chamber@princetonwi.com • Facebook: Princeton WI Chamber of Commerce

River City Antique Mall

328 S. Fulton St. (Hwy. 23/73 South) PRINCETON, WI 54968
OPEN 7 DAYS A WEEK All Year Long - 10am-5pm
Open Early Flea Market Saturdays at 7:30am! Market is across the street.
Layaway/Delivery Available • (Closed Thanksgiving, Christmas, NY Day & Easter)

920-295-3475 • www.rivercityantiquemall.com
SHOP ONLINE 24/7!!

Nice assortment of coffee & tea tins!
Dealer TLS: 2860, 2783, 2780, 2781
Prices range from \$32 to \$48 ea.

Man of the Mountain
60" Oak Table

by RJ Horner Co.
Includes 7 numbered leaves/boards
Dealer WAM \$7,495

Check out this Mid-Century Modern Aqua Arm Chair!
Dealer FRK-1233 \$95

What a stately Pier Mirror! It's unusual for its size & style.
Dealer WAM \$925

Relax in this 1950s Telescope Furniture Co. Folding Wooden Chair
Dealer VJH-3368 \$79.95

Here's a beautiful Oak Ice Box!
Herrick, Waterloo, IA
Dealer KFL-C 823 \$525

This very nice WWI Poster is custom framed.
Dealer RTA-664 \$195

Stretches out to approx. 10 ft.!

"LIKE" us on Facebook for special "friend" offers!!

MNM Antique Mall

501-A S. Fulton St.
920-295-0176

Come visit us...located next to the Princeton Flea Market/City Park

Recycle...
Buy An Antique!

Open 7 Days a Week:
January-April 10:00-4:30
May-December 10:00-5:00

MNMAntiqueMall@centurylink.net
www.MNMAntiqueMall.com

Find us on Facebook

Looking for a piece for your collection? Need a gift? Up late and can't sleep? No matter what your reason or what the season, you can now shop at River City Antique Mall

WHENEVER YOU WANT!!

Introducing
ONLINE SHOPPING 24/7!!

Just go to:
www.rivercityantiquemall.com
and explore our virtual shelves!

THE PRINCETON FLEA MARKET

Saturdays: April 19-Oct 11, 2025
50th Anniversary!

Join the fun all season long at the Princeton Flea Market. A destination in itself, Princeton's Flea Market is the largest outdoor flea market in Central Wisconsin. Enjoy a Saturday stroll in Princeton's City Park on Hwy 23 to browse through hundreds of vendor goodies. The treasures abound every week as new vendors enter the mix, so make it your weekly stop to find that long sought after item.

Admission and parking are free and there is an abundance of great things to eat. Local service groups and organizations serve snacks, sandwiches, and beverages from the historic food stand in the center of the Park. Other vendors serve a wide variety of delectable delights including egg rolls, heavenly fresh-made warm donuts, and much more. The Information Center is also housed in the food stand.

Princeton

★

W I S C O N S I N

LARGEST MARKET IN CENTRAL WISCONSIN!

On State Hwy. 23/73
35 miles west of US 41 - or - 20 miles east of US 51/I-39

FLEA MARKET • PRINCETON CITY PARK
One Shady Square Block right on Hwy. 23/73

FREE ADMISSION & PARKING!
GOOD FOOD & REFRESHMENTS!

---- COME EARLY ----

6AM TO 1PM • 170 VENDOR SPACES

50TH ANNIVERSARY!
• EVERY SATURDAY •
2025 SEASON: APRIL 19 - OCTOBER 11

Limited Dealer spaces Available Every Saturday • No Weekly Reservations--Daily spaces sold in park at 6:30am • Open 6am

For Exhibitor information, call 920-295-3877 or visit: www.princetonwi.com