

cintropur®

WATER FILTRATION & TREATMENT



STAINLESS
STEEL

SILVER

SEMI-INDUSTRIAL & INDUSTRIAL FILTERS

NW 280

Ø 1"



NW 280 CTN

Ø 1"



NW 340

Ø 1 ¼"



NW 400

Ø 1 ½"



GENERAL DESCRIPTION

Made entirely from first quality synthetic material, CINTROPUR® filters are perfectly suitable for food products and drinking water.

The CINTROPUR® vane transforms the liquid flow into a centrifugal spin by throwing the larger particles down into the lower bowl, according to the chosen filter sleeve micron-size.

BASIC PRINCIPLE

Protection of industrial as well as residential and agricultural installations by filtering the solid particles (earth, sand, rust, etc,...) suspended in the water.

APPLICATIONS

- **INDUSTRY:** Protection of sanitary fittings and machine tools.
- **AGRICULTURE:** Filtration of watering (spraying) installations;
Filtration of water for animals; Filtration of rainwater and well water.
- **GROUPS:** (hotels, restaurants, schools, buildings, ...) protection of the sanitary installations and all electrical/domestic appliances.

ADVANTAGES

- high and constant flow rate
- low pressure drop
- centrifugal prefiltration with a cyclonic effect
- robustness and reliability
- fast and easy flushing out
- permanent visual control of the filter sleeve (transparent bowl)
- exclusive system, ecological and not expensive (filter sleeve)
- can be combined with UV and activated carbon

WATER TREATMENT

The water treatment (TE & CTN) models are equipped with a special device that allows the use of different water treatment products.

• POLYPHOSPHATES, SILICATES AND SILICON-POLYPHOSPHATES

Efficient up to 60°C / 140° F, these products are used to reduce the harmful and scaling effects of the water hardness. The protection of new installations against rust is also a well known application.

• ACTIVATED CARBON

The activated carbon CINTROPUR® is sold separately and is highly suitable for the improvement of taste and the removal of odour, chlorine, ozone, micropollutants such as pesticides and other dissolved organic substances.



NW 500

Ø 2"

NW 650

Ø 2 1/2"

NW 800

Ø 3"

NW 500 TE

Ø 3"



REFILL



FILTER SLEEVE



ACTIVATED CARBON



Stainless Steel

50µm 90µm

Unit packaging

Silver

50µm 90µm

Unit packaging

Washable

150µm 300µm

sets of 5 pieces

Non washable

1µm 5µm 10µm
25µm 50µm 100µm

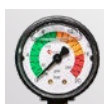
sets of 5 pieces



Quality CINTROPUR® SCIN.
Carton of 3.4 liters / 0.90 US Gal.
For the bowl NW 500TE 4.85 liters / 1.28 US Gal.
NW 280 CTN 0,75 liters / 0.462 US Gal.



ACCESSORIES



• PRESSURE GAUGES 0-20 BAR 1/4"

Model with glycerin. Indicate the system pressure.

Filter sleeves are to be changed at ΔP of 2 bar or at least 3 times a year.



• 2' DUO CONNECTOR

For assembling 2 SI heads (NW280-340-400)



• WALL FIXATION

Stainless steel wall bracket is to be fixed to the filter head with two locking nuts.

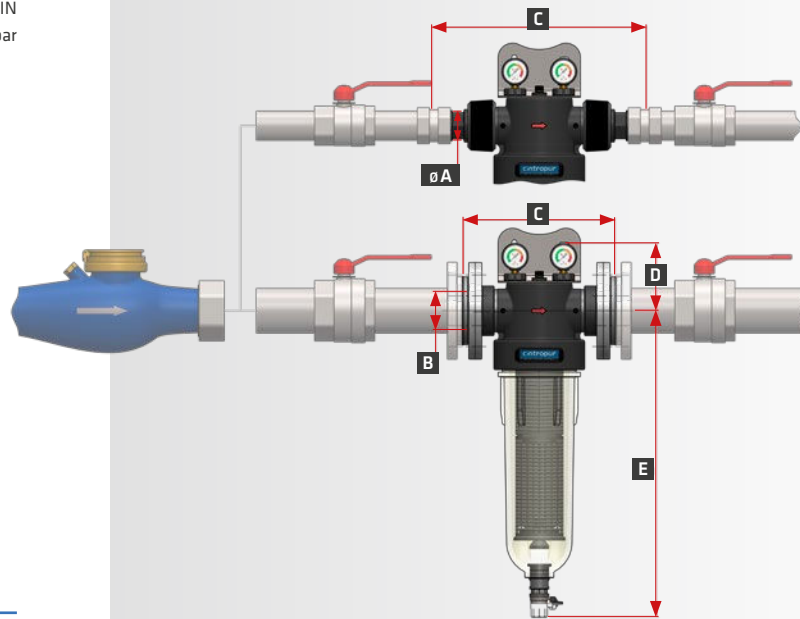


TECHNICAL DATA



	NW 280	NW 280 CTN	NW 340	NW 400	NW 500	NW 650	NW 800	NW 500 TE
Diameter of pipe	1"	1"	1 1/4"	1 1/2"	2"	2 1/2"	3"	2"
Average flow rate (m³/h) ΔP = 0.2 bar	7	3,5*	10	12	18	25	32	5*
Working pressure (bar)	10	10	10	10	10	10	10	10
Max. operating pressure (bar)	16	16	16	16	16	16	16	16
Max. operating temperature (°C)	50	50	50	50	50	50	50	50
Weight (Kg)	2,2	2	2,7	2,9	6,4	7	7,4	5,6
Standard filter sleeve (μm)	25	-	25	25	25	25	25	-
Available volume (litre)	-	0,75	-	-	-	-	-	4,85
Filtration surface (cm²)	530	-	770	1010	1288	1288	1288	-

* Value with activated carbon CINTROPUR® SCIN
ΔP = 0,8 bar



INSTRUCTIONS

	NW 280	NW 280 CTN	NW 340	NW 400	NW 500	NW 650	NW 800	NW 500 TE
A (∅)	1"	1"	1 1/4"	1 1/2"	2"	2 1/2"	3"	2"
B	DN25	DN25	DN32	DN40	DN50	DN65	DN80	DN50
C (mm)	284	284	284	284	443	304	313	443
D (mm)	99	56	99	99	±140	±140	±140	±86
E (mm)	373	373	474	576	632	632	632	632