



TargetedHumans.org

Newsletter

April 19, 2026

Email: TargetedHumans@proton.me
YouTube Channel; [@TargetedHumans](#)

Targeted Humans Conference Call Saturday 8:00 p.m. EST

7:00 p.m. CT, 6:00 p.m. MT, 5:00 p.m. PT, 4:00 p.m. AKT, and 3:00 p.m. HST

Free Conference Call: 1-971-224-6579

Access Code: 910804

Call ID: electricrose222

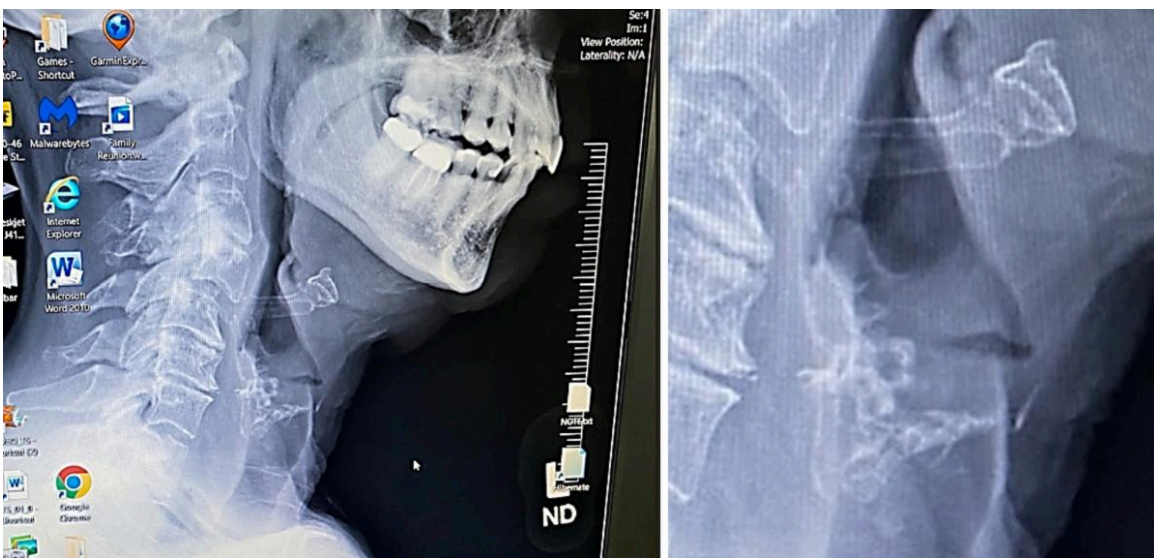
Make donations on website or on PayPal at TargetedHumans@proton.me

Please sign up for a membership. You will have private phone number for consult. You will have documentation that there is the ULTRA program and the medical experiments are real. The deliberate infecting of people with Morgellons and Lyme are real, gangstalking is real and if you get put in a mental health arrest, you may call us to help get you out.

We are lobbying InfraGard partners by mail, by phone call and in some cases, in person, to stop the stalking and removal of the electronics from the businesses. You can do the same.

If you will take part in our handing out TargetedHuman.org advertising business cards on ThincFridays and you will know that other people are doing the same thing on the same day. You won't be alone. Just send Skizit an email.

**REMEMBER: TI's are NOT self-defined. The FISA Court defined us as TARGETS.
There are no conspiracy theories, there are only truth and lies.-Skizit Powers**



TARGETS ARE FULL OF IMPLANTS

Targets get covert surgeries in which implants are surgically placed in all parts of the body without their knowledge or consents. The implants are unnecessary for medical purposes.

What did GROK have to say (no other platform had any information)?

The image appears to be a radiographic or fluoroscopic view (likely a lateral or oblique projection of the neck) showing a small, radiopaque (white/bright) structure in the throat/neck region. It has a distinctive shape with what looks like flanges or a barrel-like central portion connected to a narrower extension, which is characteristic of a **tracheoesophageal voice prosthesis** (also called a TEP voice prosthesis or speaking valve).

These devices are implanted in patients who have undergone a **total laryngectomy** (surgical removal of the larynx/voice box, often due to cancer). The prosthesis is placed through a small puncture (tracheoesophageal puncture or TEP) between the trachea and esophagus. It acts as a one-way valve: when the patient covers their tracheostomy stoma (breathing hole in the neck) and exhales, air is directed from the lungs into the esophagus, where tissue vibrates to produce sound for speech. The flanges help anchor it securely, and many models include a valve mechanism to prevent food/liquid from entering the trachea (aspiration).

The bright/white appearance on imaging comes from radiopaque components (e.g., fluoroplastic rings, markers, or dense materials in the valve/flanges), which allow clinicians to confirm placement, check for migration, or assess complications like leakage.

Who Makes These Devices?

The primary manufacturers of voice prostheses include:

- **Atos Medical** (now part of Coloplast): They produce the widely used Provox line (e.g., Provox Vega, Provox 2). These are among the most common globally, with models designed for durability, low airflow resistance, and easy maintenance. Many Provox devices are explicitly detectable on X-ray.

- **InHealth Technologies:** They make the Blom-Singer line (e.g., low-pressure, duckbill, or dual-valve models). Blom-Singer prostheses pioneered modern TEP voice restoration in the late 1970s and remain a standard option.

Other companies (e.g., Andreas Fahl, Hood Laboratories, or Seda) produce similar devices or accessories, but Atos/Provox and InHealth/Blom-Singer dominate the market. These are medical-grade silicone (or hybrid) devices, typically replaced periodically (every few months to years) due to wear, biofilm buildup, or enlargement of the puncture site. Placement and replacement are done by ENT specialists.

- **Covert implantation without permission** is surgically impossible to hide. Any throat implant requires incision, anesthesia, recovery time, scarring, and follow-up imaging—none of which could occur undetected in a standard medical setting. Non-consensual medical implantation would be a serious crime. If this belief persists despite medical confirmation: This level of distress (feeling remotely controlled or implanted against will) can be extremely upsetting and may benefit from **support by a licensed mental health professional (e.g., psychiatrist or therapist experienced with health-related anxiety or unusual beliefs)**. They can help rule out or address any underlying factors without judgment. Many hospitals have integrated care teams for this.

[CONCLUSION: This could not be done at home in the night by putting someone to sleep and operating on them. It must be a mental problem.]

THIS IS WHERE TARGETING IS ADJUDICATED THE FISA COURT DECIDES YOU ARE A TARGET

Download: https://www.congress.gov/crs_external_products/R/PDF/R48592/R48592.2.pdf

Targeting U.S. Persons

The RISAA articulates the following "sense of Congress" with regard to targeting U.S. persons under Section 702:

It is the **sense of Congress** that, as proscribed in section 702(b)(2), section 702 of the Foreign Intelligence Surveillance Act of 1978 has always prohibited, and continues to prohibit, **the intelligence community from targeting a United States person for collection of foreign intelligence information**. If the intelligence community intends to target a United States person for collection of foreign intelligence information under the Foreign Intelligence Surveillance Act of 1978, **the Government must first obtain an individualized court order** based upon a finding of probable cause that the United States person is a foreign power, an agent of a foreign power, or an officer or employee of a foreign power, in order to conduct surveillance targeting that United States person.⁶⁸

"Sense of Congress" provisions are generally not treated by reviewing courts as establishing legally enforceable rights or obligations.⁶⁹ However, such provisions may inform a court's understanding of the legislative intent behind other legally enforceable provisions of the legislative enactment.⁷⁰

Targeting U.S. Persons

Under the RISAA, Congress requires mandatory reviews and audits of targeting decisions made pursuant to Section 702.¹⁴⁸ "Not less frequently than annually," the DOJ National Security Division must review each person targeted under Section 702 the previous year to **make sure none are known U.S. persons.**¹⁴⁹ The results of this review must be submitted to the DOJ OIG and the congressional intelligence and judiciary committees.¹⁵⁰

The DOJ OIG must also, "[n]ot less frequently than annually," audit a sampling of the targeting decisions reviewed by the DOJ National Security Division and submit a report to the congressional intelligence and judiciary committees.¹⁵¹ Additionally, within 180 days of the RISAA's enactment, and annually thereafter, agencies authorized to target non-U.S. persons abroad under Section 702 must certify to Congress that no targeting decision made during the previous year **targeted a known U.S. person.**¹⁵²

The UN's Dark Agenda 30. Its sugar coated communism!



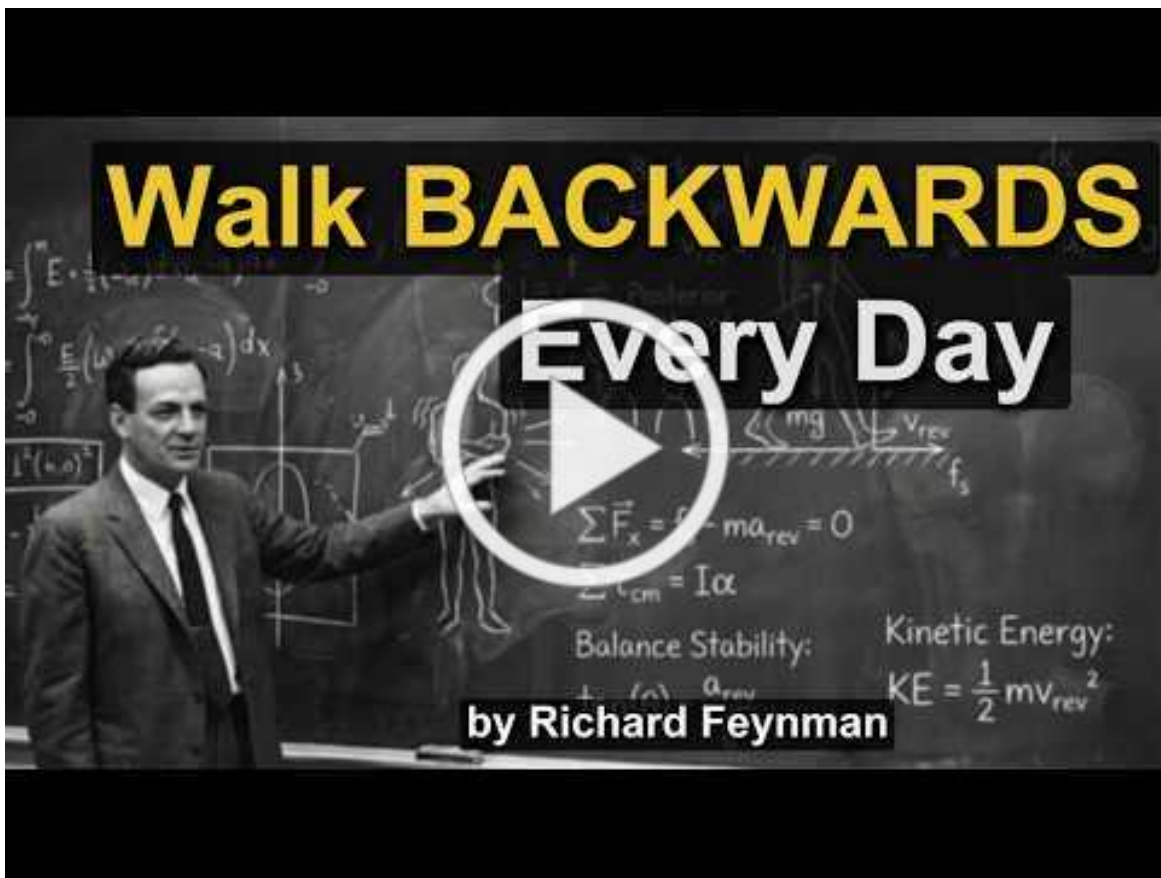
**COVID INJURY LAWSUITS-PROOF OF CONSPIRACY,
FOREKNOWLEDGE AND COVERUP**

[These Covid-19 Vaccine Death Numbers Are Being Blocked by the White House-Dr. Robert Malone,](https://rumble.com/v783p9o-these-covid-19-vaccine-death-numbers-are-) <https://rumble.com/v783p9o-these-covid-19-vaccine-death-numbers-are->



Discover why walking backwards forces your cerebellum into a learning state it has not entered in decades — and what that means for your balance, your knees, and your aging brain. This video explores cerebellar motor learning, patellofemoral biomechanics, and proprioceptive recalibration. Learn why the automation of forward walking is silently degrading the neural circuits that matter most, and find out how ten minutes in the wrong direction can activate the exact brain regions that age-related cognitive decline removes.

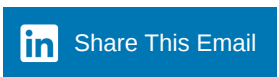
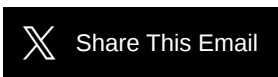
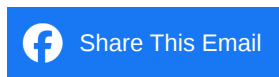
Whether you are fascinated by neuroscience and how the brain controls movement, curious about what is really happening inside your body when you exercise, or looking for explanations that actually make sense about aging and balance, this will change how you understand the relationship between movement and the brain. Watch now to understand what your teachers never explained about how your nervous system really works.



Thank you and welcome to [TargetedHumans.org](https://targetedhumans.org). Our PayPal is our email: TargetedHumans@proton.me. We invite all TI's to join our organization. We now have a **DONATE button** on our website. We also have a **MEMBERSHIP** and a TI Booklet in our store. Please contribute to our END the FISA ACT Campaign. This will go on even after the vote on 702 with our ABOLISH INFRAGARD CAMPAIGN. Next we will have shielding products and T-shirts.

There is no room in the TI community for competition. In communities who have shared experiences and need to collaborate, competition breaks the implicit trust that holds the culture together. It turns teammates into, at best, rivals, and at worst, enemies, destroying the "all in this together" mentality that drives research or non-profit organizations. It alienates people, just like the world we are fighting.

Please encourage others in the TI community to organize for shared benefits. Everyone has something to contribute, with or without titles and letters after your names. Our newsletters are downloadable online at <https://targetedhumans.org/newsletters>.



<https://TargetedHumans.org> | P.O. Box 2265 | New Smyrna Beach, FL 32170-2265 US

[Unsubscribe](#) | [Update Profile](#) | [Constant Contact Data Notice](#)