

Honda CR-V

ALL NEW
CR-V





AHEAD IN PERFECTION

Saatnya jadi yang terdepan dan rasakan kesempurnaan untuk melampaui batasan baru dalam hidup bersama All New Honda CR-V, *The First Honda Flagship Hybrid SUV in Indonesia.*

STEP INTO TRUE PERFECTION

Melangkah menuju kesempurnaan dan penuh percaya diri bersama SUV berkarakter *sporty* dan *premium*.



Sequential LED Turning Signal

Full LED Headlight with LED Daytime Running Light
Stylish Aero Kit | LED Fog Lights | Auto Foldable Black Door Mirror
with LED Turning Signal

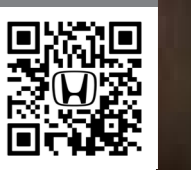
PERFECTION ON EVERY SIDE

Desain menawan dengan sentuhan berkkelas yang terpancar dari setiap sisi tampilan All New Honda CR-V, siap untuk melengkapi visi Anda.



19" Bold Alloy Wheels Design

Explore Exterior
All New
Honda CR-V



Rear LED Tail Lights with Rear Fog Lights
Rear Parking Sensor | Smart Entry System | Roof Rail



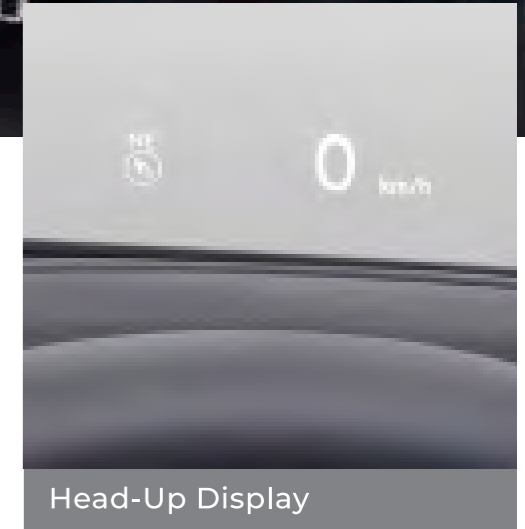
One Push Ignition System | Dual Zone Auto A/C
8-Way Driver Power Seat with Lumbar Support | Driver Memory Seat

COMFORTABLE MEETS PERFECTION

Rasakan pengalaman mengemudi yang makin sempurna dan nyaman didukung fitur canggih untuk segala aktivitas Anda.



10.2" Interactive TFT Meter Cluster



Head-Up Display

Explore Interior
All New
Honda CR-V



Sporty Interior with Red Accent | Interior Ambient Light
4-Way Front Passenger Power Seat | Rear A/C Ventilation (2nd row)

DISCOVER PERFECTION WITH A SPORTY-LUXURIOUS INTERIOR

Nikmati perjalanan dengan kenyamanan yang sesungguhnya di setiap baris, menciptakan pengalaman berkendara yang tak terlupakan.



Power Panoramic Sunroof

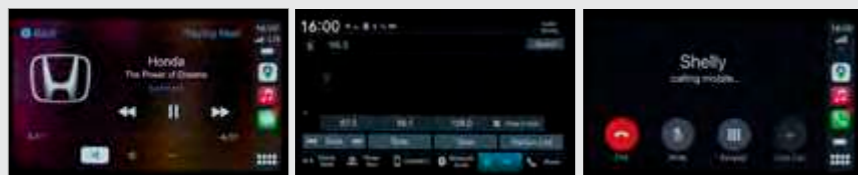


Leather-Trimmed Seat
with Red Stitches

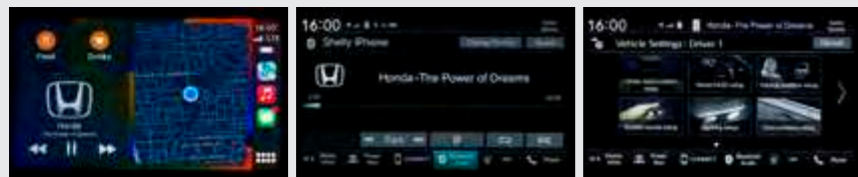
STEP AHEAD TOWARDS PERFECTION



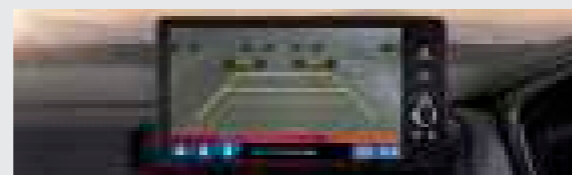
9" Advanced Capacitive Touchscreen Display Audio



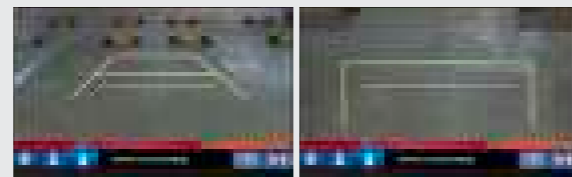
Audio AM/FM Radio Hands-Free Telephone



Wireless Smartphone Connection USB & Bluetooth Connectivity Vehicle Setting



Normal View



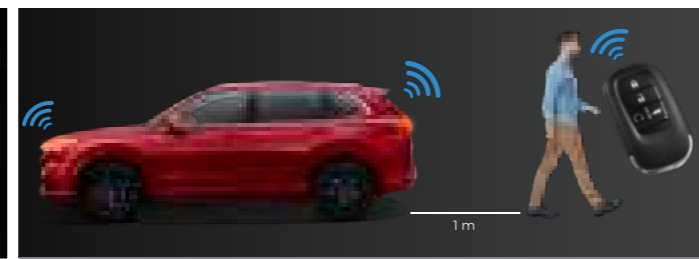
Wide View Top View Multi-Angle Rear View Camera



Honda Smart Key Card



Remote Engine Start



Walk Away Auto Lock



Honda LaneWatch™

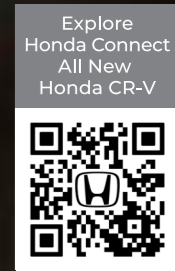


Wireless Charging Console



BOSE 12 Speakers Audio System

REINVENTING THE NEW STANDARD OF CONNECTIVITY



Honda CONNECT

Selalu terhubung dengan mobil Anda dengan fitur inovatif Convenience, Safety, dan Security dalam satu sentuhan.

| Convenience | Safety | Security |
|--|---|---------------------------------|
| <p>Remote Vehicle Control</p> <ul style="list-style-type: none"> Remote Engine Start & Stop (with Remote A/C Control) Remote Lock & Unlock Remote Light ON | <p>Automatic Collision Detection</p> | <p>Find My Car</p> |
| <p>Car Status</p> <ul style="list-style-type: none"> Remote Diagnostic Support Battery, Locks, Airbag | <p>Security Alarm Detection</p> | <p>Geo-Fencing Alert</p> |
| <p>Service History & Reminder</p> | <p>Speed Alert</p> | <p>Emergency Call</p> |

Explore Performance All New Honda CR-V



e:HEV

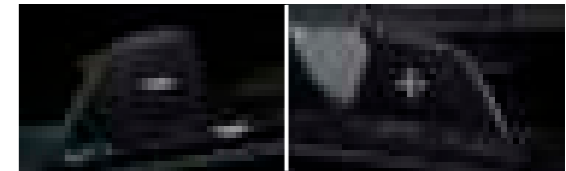
MORE POWER, MORE EFFICIENT

Kinerja *electric motor* yang dominan, menghasilkan sensasi berkendara yang lebih bertenaga sekaligus lebih hemat bahan bakar.



Shift B

Gunakan Shift B untuk memberikan perlambatan yang aman bahkan di jalan menurun yang curam, sekaligus pengaturan pengisian baterai yang lebih optimal.




Deceleration Paddle Selectors

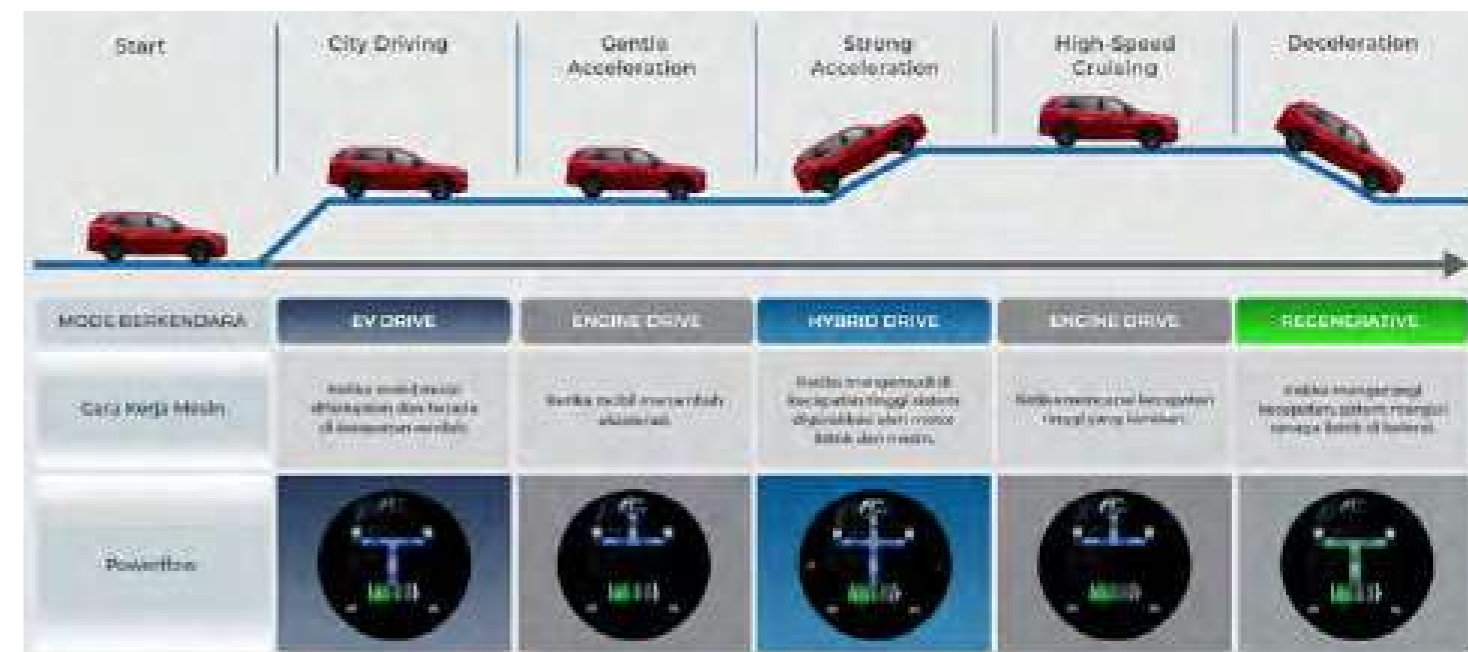


3-Mode Drive System



| | |
|---|--|
| <p>Electric Motor</p> <p>Max. Power 184PS @5.000-8.000rpm</p> <p>Max. Torque 335Nm @0-2.000rpm</p> | <p>Total System (Engine and Electric Motor)</p> <p>207PS</p> |
| <p>2.0L DOHC i-VTEC Engine</p> <p>Max. Power 147PS @6.100rpm</p> <p>Max. Torque 181Nm @4.500rpm</p> |  <p>E-CVT Electrical Continuously Variable Transmission</p> |

How **e:HEV** Hybrid System Works:



Cara kerja sistem hybrid e:HEV dapat berbeda sesuai dengan kondisi jalan, beban kendaraan & cara berkendara.

FIND PERFECTION IN EVERY JOURNEY

Jadikan setiap momen berkendara menjadi lebih sempurna dengan Honda Sensing



Explore Honda Sensing All New Honda CR-V



Honda SENSING

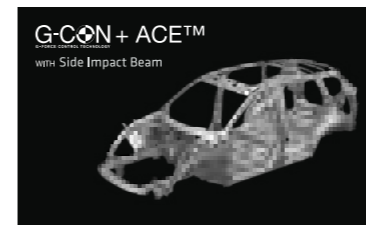
Hadir dengan fitur keselamatan yang lebih lengkap untuk menemani setiap perjalanan Anda.

| | | |
|--|--|--|
| <p>Auto Actions BRAKE</p> | | |
| <p>CMBS™ Collision Mitigation Braking System™</p> | <p>LKAS Lane Keeping Assist System</p> | <p>ACC with LSF Adaptive Cruise Control with Low Speed Follow</p> |
| | <p>Auto Actions</p> | <p>Auto Actions Vehicle Start Detected Ahead</p> |
| <p>AHB with ADB Auto High-Beam with Adaptive Driving Beam</p> | <p>RDM Road Departure Mitigation System</p> | <p>LCDN Lead Car Departure Notification System</p> |

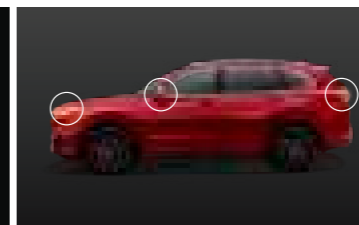
SAFETY

8 Airbags | Driver Attention Monitor | Lock Presetting

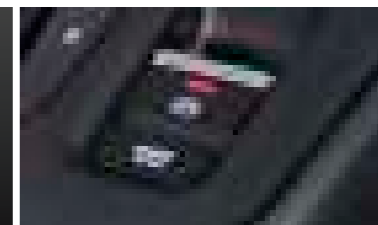
SECURITY



G-CON + ACE™ with Side Impact Beam



Emergency Stop Signal



Electric Parking Brake + Auto Brake Hold



Alarm System



Active Cornering Light



Hill Start Assist (HSA)



Hill Descent Control (HDC)



Immobilizer

UNLEASH PERFECTION ON THE ROAD

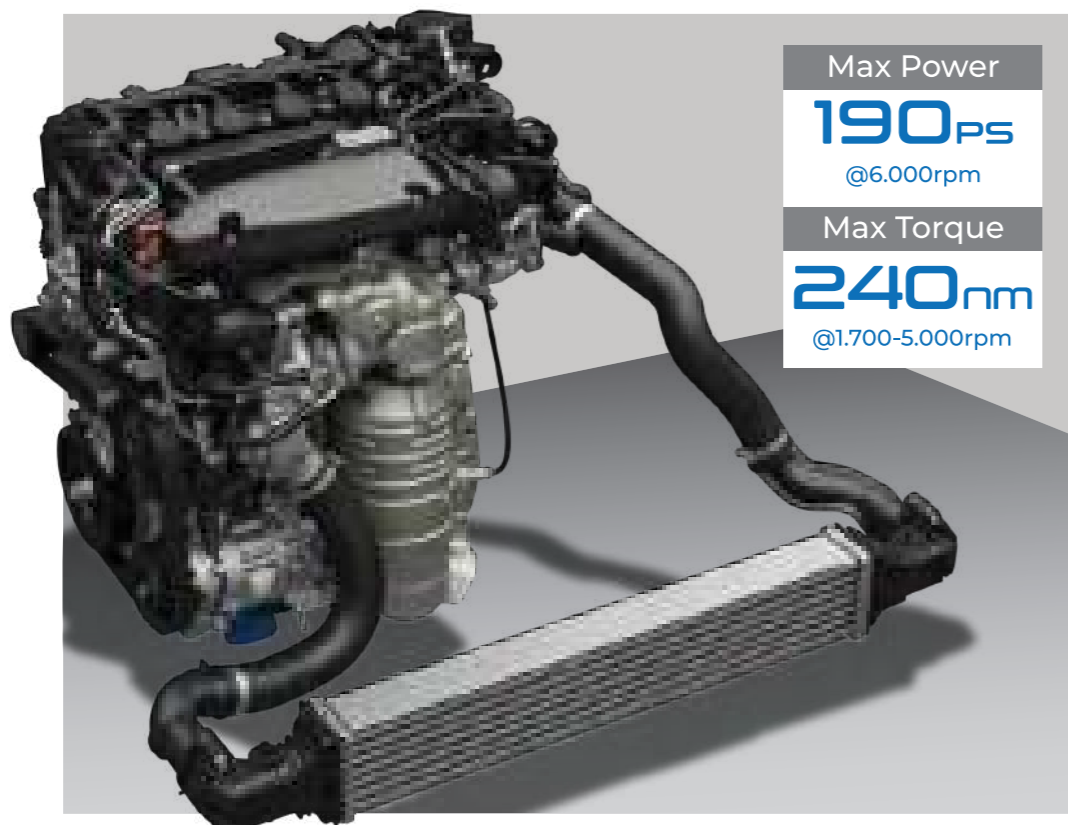
Rasakan sensasi nyaman berkendara dengan *premium* SUV 7-seater,
yang hadir untuk menyempurnakan setiap perjalanan Anda.



**1.5L VTEC
TURBO**

Honda
SENSING

Collision Mitigation Braking System™ | Lane Keeping Assist System | Auto-High Beam
Adaptive Cruise Control with Low Speed Follow | Road Departure Mitigation System
Lead Car Departure Notification System

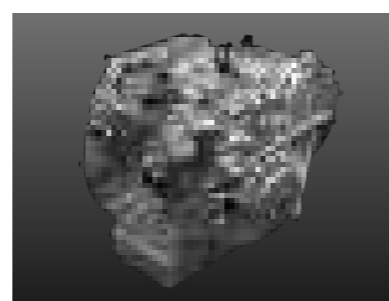


Max Power

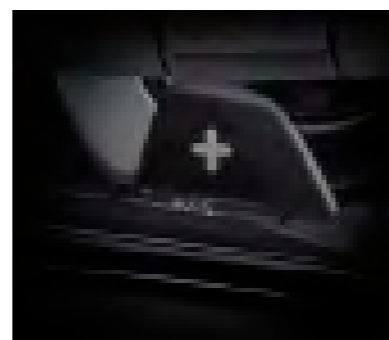
190PS
@6.000rpm

Max Torque

240nm
@1.700-5.000rpm



Continuously
Variable Transmission



Paddle Shift



7-Seater Cabin

COMFORT ENHANCEMENT



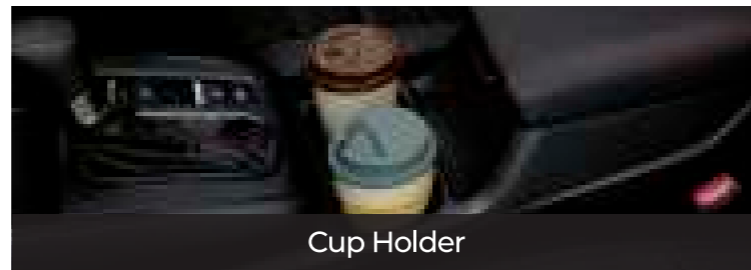
Explore Comfort Enhancement All New Honda CR-V



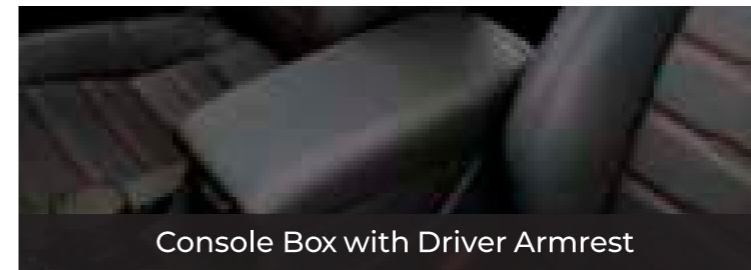
Hands-Free Access Power Tailgate with Walk-Away Close



Sun Visor with Vanity Mirror



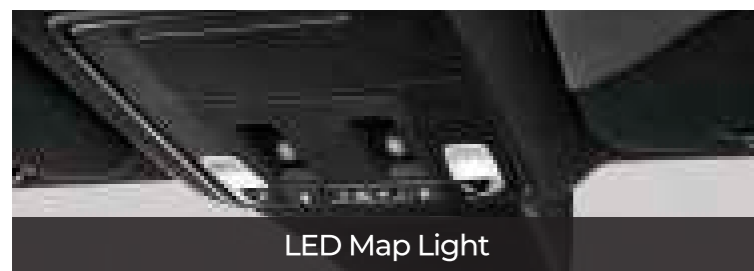
Cup Holder



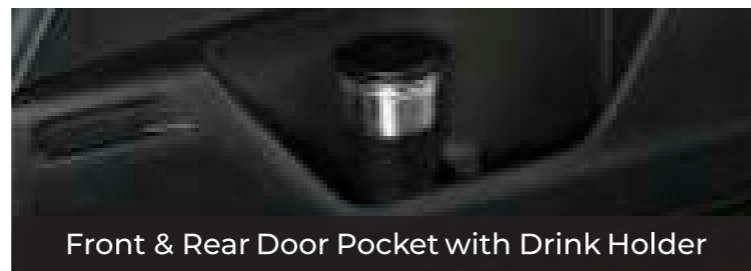
Console Box with Driver Armrest



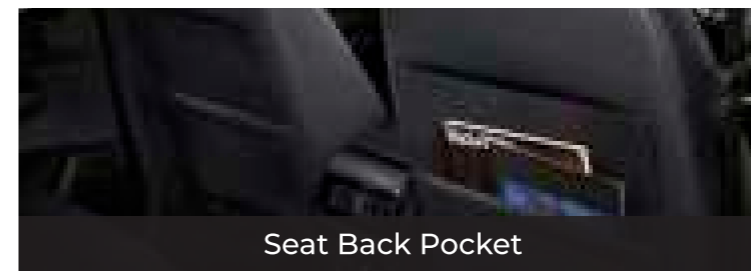
1st Row USB A + 1 USB C + Power Outlet



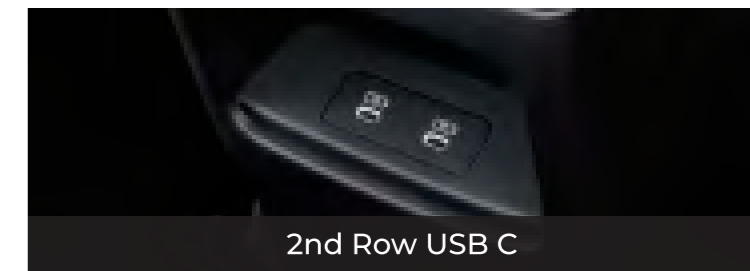
LED Map Light



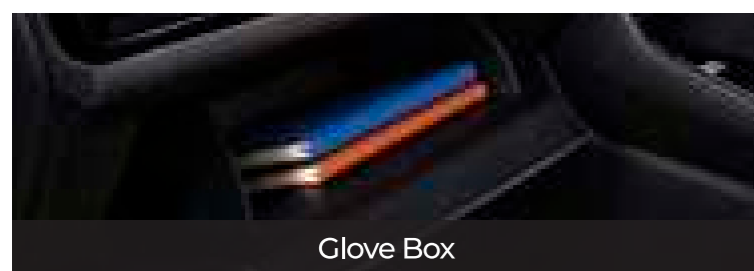
Front & Rear Door Pocket with Drink Holder



Seat Back Pocket



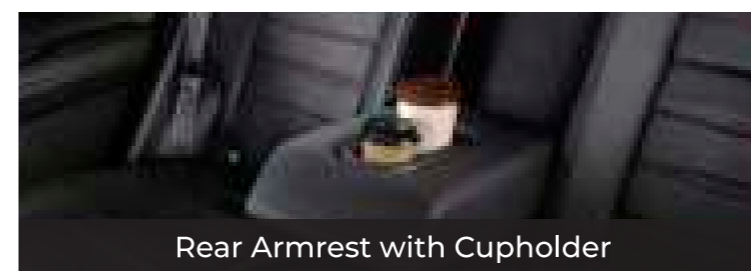
2nd Row USB C



Glove Box



Door Switch Panel



Rear Armrest with Cupholder



3rd Row (Cargo) Power Outlet

CHOOSE YOUR PERFECTION



RS e:HEV



1.5L VTEC TURBO

SPECIFICATIONS

| MESIN | Tipe 2.0L RS e-HEV | | Tipe 1.5L TURBO |
|---|---|--|--|
| Tipe | 2.0L DOHC i-VTEC 4 Silinder Segaris, 16 Katup + DBW | | 1.5L DOHC 4 Silinder Segaris, 16 Katup VTEC Turbo + DBW |
| Sistem Suplai Bahan Bakar | PGM - FI | | |
| Baterai | Lithium-Ion | | |
| Diameter x Langkah | (mm) | 81,0 x 96,7 | 73 x 89,5 |
| Isi Silinder | (cc) | 1.993 | 1.498 |
| Perbandingan Kompresi | | 13,9 : 1 | 10,3 : 1 |
| Daya Maksimum | PS/rpm | 184 / 5.200 - 8.000 (Motor), 147 / 6.100 (Engine), 207 (Total System: Engine + Electric Motor) | 190 / 6.000 |
| Momen Puntir Maksimum | Nm/rpm | 335 / 0 - 2.000 (Motor), 181 / 4.500 (Engine) | 240 / 1.700 - 5.000 |
| DIMENSI / UKURAN | | | |
| Parang x Lebar x Tinggi | (mm) | 4.691 x 1.866 x 1.681 | |
| Jarak Sumbu Roda | (mm) | 2.701 | |
| Jarak Pijakan Depan / Belakang | (mm) | 1.611 / 1.627 | |
| Ground Clearance | (mm) | 198 | |
| TRANSMISI | | | |
| Tipe | Electrical Continuously Variable Transmission (E-CVT) | | Continuously Variable Transmission (CVT) |
| Ratio | Forward | 2,230 (Motor) 0,707 (Engine High Gear) 1,409 (Engine Low Gear) | 2,645 - 0,405 |
| | Reverse | 2,230 (Motor) 0,707 (Engine High Gear) 1,409 (Engine Low Gear) | 1,658 - 1,264 |
| | Final Gear | 9,899 (Motor) 3,140 (Engine High Gear) 6,252 (Engine Low Gear) | 5,641 |
| Deceleration Paddle Selectors | | | |
| SISTEM SUSPENSI | | | |
| Tipe | Front | | Independent MacPherson Strut |
| | Rear | | Independent Multi-Link |
| SISTEM REM | | | |
| Tipe | Front & Rear | | Ventilated Disk |
| | Rear | | Solid Disk |
| | Parking Brake | | Electric Parking Brake |
| Auto Brake Hold | | | |
| BAN | | | |
| Velg | | | 19 x 7,5J |
| Roda | | | 235 / 55 R19 |
| EKSTERIOR | | | |
| Headlight | | | (Full LED Headlights with LED Daytime Running Light) |
| Auto Headlight Adjuster | | | (with Adaptive Driving Beam & Auto High-Beam) |
| Sequential LED Turning Signal | | | (with Auto High-Beam) |
| Active Cornering Light | | | |
| LED Fog Light | | | |
| Remote Engine Start | | | |
| Power Retractable Door Mirror with LED Turning Signal | | | (Body Color) |
| Rear LED Taillights | | | (with Rear Fog Light) |
| Power Tailgate | | | (Hands-Free Access Power Tailgate with Walk-Away Close) |
| Rear Parking Camera | | | (Multi-Angle View) |
| Stylish Aero Kit | | | (Black) |
| Roof Rail | | | |
| Dual Exhaust Pipe | | | (with Stainless Steel Tailpipe Finishers) |
| INTERIOR | | | |
| One Push Ignition System | | | |
| Meter Cluster | | | (10,2" TFT Display) |
| Head-up Display | | | |
| Audio System | 9" Advanced Capacitive Touchscreen Display Audio, MP3/WMA, USB Port, Bluetooth, Hands-Free Telephone, AM/FM Radio, Wireless Smartphone Connection, Power Flow Mode, ANC, integrated with Honda LaneWatch™ | | 9" Advanced Capacitive Touchscreen Display Audio, MP3/WMA, USB Port, Bluetooth, Hands-Free Telephone, AM/FM Radio, Wireless Smartphone Connection, ANC, integrated with Honda LaneWatch™ |
| Audio Speaker | | | (8-Speakers) |
| Hands-Free Telephone Switch | | | |
| Audio Steering Switch | | | |
| Air Conditioner | | | (Dual Zone with Auto A/C) |
| 3-Mode Drive System | | | |
| Power Seat Adjustment | | | (8-Way Driver Power Seat with Lumbar Support & 4-Way Front Passenger Power Seat) |
| Driver Memory Seat | | | |
| Seat, Steering Wheel & Shift Knob Upholstery | | | (Leather & Synthetic combi with Red Stitches) |
| Interior color | | | (Black with Wood-Grain & Piano Black Garnish Trim) |
| Ambient Light | | | (White) |
| Power Panoramic Sunroof | | | |
| Sport Pedal | | | |
| Wireless Charging Console | | | |
| Honda CONNECT | | | |
| FITUR KESELAMATAN | | | |
| Honda SENSING™ | CMBS™, RDM, ACC with LSF, LKAS, LCDN, ADB, AHB | | CMBS™, RDM, ACC with LSF, LKAS, LCDN, AHB |
| Honda Lane Watch™ | | | |
| Struktur Rangka Bodi | | | G-CON + ACE™ with Side Impact Beam |
| Airbags | | | 8 Airbags (Dual Front SRS, Side, Side Curtain & Dual Knee) |
| Hill Start Assist (HSA) | | | |
| Hill Descent Control | | | |
| Vehicle Stability Assist | | | |
| Sabuk Keselamatan | 1st Row | 3 Points ELR x2 | |
| | 2nd Row | 3 Points ELR x2 | |
| | 3rd Row | - (no 3rd Row) 3 Points ELR x2 | |
| Seatbelt Reminder | | | |
| Driver Attention Monitor | | | |
| Emergency Stop Signal | | | |
| Brake Override System | | | |
| ISOFIX & Tether | | | |
| Pretensioner with Load Limiter Seat Belt | | | |
| Parking Sensor | | | 4-point (Rear) |
| Acoustic Vehicle Alerting System (AVAS) | | | |
| APAR (Alat Pemadam Api Ringan) | | | |
| SISTEM KEAMANAN | | | |
| Tipe Kunci | | | Smart Key |
| Keyless Entry | | | |
| Honda Smart Key Card | | | |
| Rear Seat Reminder | | | |
| Auto Lock System by Speed | | | |
| Walk Away Auto Lock | | | |
| Lock Presetting | | | |
| Immobilizer | | | |
| Alarm System | | | |

COLORS



Platinum White Pearl



Meteoroid Gray Metallic



Crystal Black Pearl



Canyon River Blue Metallic



Ignite Red Metallic (RS Only)

Genuine Honda Accessories



Door Visor



Cargo Tray (RS e:HEV)



Cargo Tray (1.5L Turbo)



Mobil Sehat, Hati Tenang

All New Honda CR-V juga tersedia dalam pilihan **Paket Hemat** yang memberikan keuntungan melalui perawatan berkala yang lebih terjangkau dan bebas kenaikan harga.

Terdapat pilihan:

1 Perawatan Berkala

4

Tahun

atau 50.000 Km

2 Perawatan Berkala

8

Tahun

atau 100.000 Km

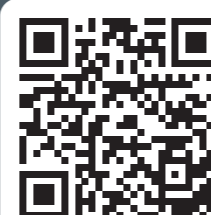
- + Biaya Perawatan Lebih Hemat
- + Bebas Kenaikan Harga
- + Dapat D cicil Bersama Kredit Mobil
- + Kendaraan Tetap Prima
- + Berlaku di Dealer Honda Seluruh Indonesia



Gratis biaya jasa untuk pemeriksaan dan pengerjaan perawatan berkala normal, sesuai dengan Buku Garansi dan Perawatan sampai dengan **50.000 km** atau **4 tahun**. (mana yang tercapai terlebih dahulu)

Pelayanan & Informasi Honda hanya dengan sentuhan

Download aplikasi Honda e-Care sekarang di



*Syarat dan ketentuan berlaku.

Honda Automobile Oil
Gunakan Honda Automobile Oil, oli mesin yang diformulasikan secara khusus dan paling direkomendasikan untuk mobil Honda. Menjaga kinerja mesin lebih optimal dan menghasilkan efisiensi bahan bakar yang lebih baik sehingga lebih ramah lingkungan.

3 Years/100.000 Km Warranty
Anda tidak perlu ragu lagi saat memilih produk Honda dengan jaminan selama 3 tahun / 100.000 km (mana yang tercapai lebih dulu), sebagai wujud dari perlindungan Honda terhadap kualitas produk-produknya.

12 Months Parts Warranty/20.000 Km Warranty
Sekarang Anda bisa semakin tenang berkendara dengan mobil Honda berkat jaminan garansi 12 bulan bagi para konsumen yang mengganti suku cadang asli Honda. Semakin lengkap dengan sistem One Price Policy untuk mendapatkan suku cadang asli Honda dan harga yang seragam di seluruh Indonesia.

Honda Extra Care - Extended Warranty
Layanan purna jual perpanjangan masa garansi standar. Dengan membayar sejumlah uang, masa garansi kendaraan Anda akan dijamin sampai dengan 2 tahun atau 40.000 km setelah masa garansi standar berakhir.

Honda Customer Care
Layanan purna jual untuk konsumen sebagai bukti dedikasi Honda terhadap kepuasan Anda. Dengan tenaga operator yang ramah dan profesional, siap menjawab dan menindaklanjuti segala masukan dan permasalahan Anda.

Honda Extra Care - Paket Perawatan Berkala
Pilihan tepat untuk berhemat dengan pembelian paket yang sudah mencakup semua biaya jasa dan suku cadang sesuai buku garansi dan perawatan. Nikmati performa prima kendaraan Anda dan bebaskan diri dari kenaikan biaya di masa datang.

High Voltage Battery Warranty
High Voltage Battery (Baterai Tegangan Tinggi) dilindungi oleh garansi jangka panjang selama 8 tahun/160.000 kilometer (mana yang tercapai lebih dulu). Dengan perlindungan ini, Anda dapat menikmati manfaat mengendarai kendaraan hemat bahan bakar dan ramah lingkungan tanpa rasa khawatir*

24-Hour Emergency Roadside & Towing Assistance
Experience Honda

Nikmati layanan purna jual eksklusif persembahkan dari Experience Honda. Saat Anda mengalami gangguan pada kendaraan atau membutuhkan layanan saat keadaan darurat, kapan saja dan di mana saja, hubungi nomor Emergency Hotline 24 jam di 0-800-14-46632 (Tekan 1).

Dengan melakukan aktivasi Experience Honda, Anda dapat memperoleh keuntungan*, seperti:

- Layanan penggantian ban
- Layanan pengaktifan aki kendaraan
- Layanan kunci tertinggal dalam kendaraan
- Layanan pengisian bahan bakar maksimal 5 liter untuk kendaraan yang mogok di jalan akibat kehabisan bensin
- Layanan darurat derek kendaraan ke Dealer Honda terdekat

*Syarat dan ketentuan berlaku

Trendsetter

INOVASI JELANG NORMAL BARU,
HONDA GELAR KEJUARAAN SIMULATOR BALAP
UNTUK YANG PERTAMA KALINYA DI INDONESIA
PERGI KE KANTOR DI ERA NEW NORMAL
BEGINI CARA PARKIR YANG BENAR DI BASEMENT
JAGA PERFORMA MOBIL HONDA ANDA SELALU PRIMA
DENGAN MELAKUKAN 4 TIPS BERIKUTI

EDISI
#NEW
NORMAL



Trendsetter

ALVIN BAHAR DARI TIM HONDA RACING INDONESIA
RAIH GELAR JUARA NASIONAL BALAP TURING
UNTUK KEDELAPAN KALINYA

TERJUAL LEBIH DARI 70.000 UNIT,
HONDA BRIO CETAK REKOR PENJUALAN
TERTINGGI DI TAHUN 2019

8

TIMES WINNING
TOURING CAR
CHAMPIONSHIP!

ITCR MAX 2019
ITCC MAX 2016
ITCC 2014 - 2015
ITC 2008 - 2010
ISP 2004



ALVIN
BAHAR



Trendsetter

MOBILITY GELAR DISKUSI
AN & PENANGGULANGAN COVID-19
GAMELOFT, HONDA LUNCURKAN MOBILE GAME
BRIO VIRTUAL DRIFT CHALLENGE DI INDONESIA
MEMBELI MOBIL
BEST TIME BUYER!



BRIO
VIRTUAL
DRIFT
CHALLENGE

Anda tertarik mengetahui
tentang produk dan aktivitas
terbaru Honda?

DAFTAR SAYA



HONDA



Anda tertarik membeli
Mobil Honda?

Dealer kami akan
menghubungi Anda

Silahkan isi form berikut:

[ISI FORM DISINI](#)



HONDA