



DECORATIVE BEAMS
BONDECK



Why choose us ?



Reinforced composite

The aluminium alloy comes with strong bending strength, so that decorative beams is free of creep deformation even in long-span assembled structures.



Weather resistant

Unlike natural solid timber, BPC (Bamboo plastic composite) contains 3 % chemical additive agent, including anti-UV agent and mildewproof agent, which allows decorative beams a better performace in outdoor durability.



Light weight

Low density of aluminium matching hollow structure offers decorative beams a lighter body than solid board. This factor will not only reduce the load bearing burden of buildings, but it will also save the cost in sea freight.



High precision

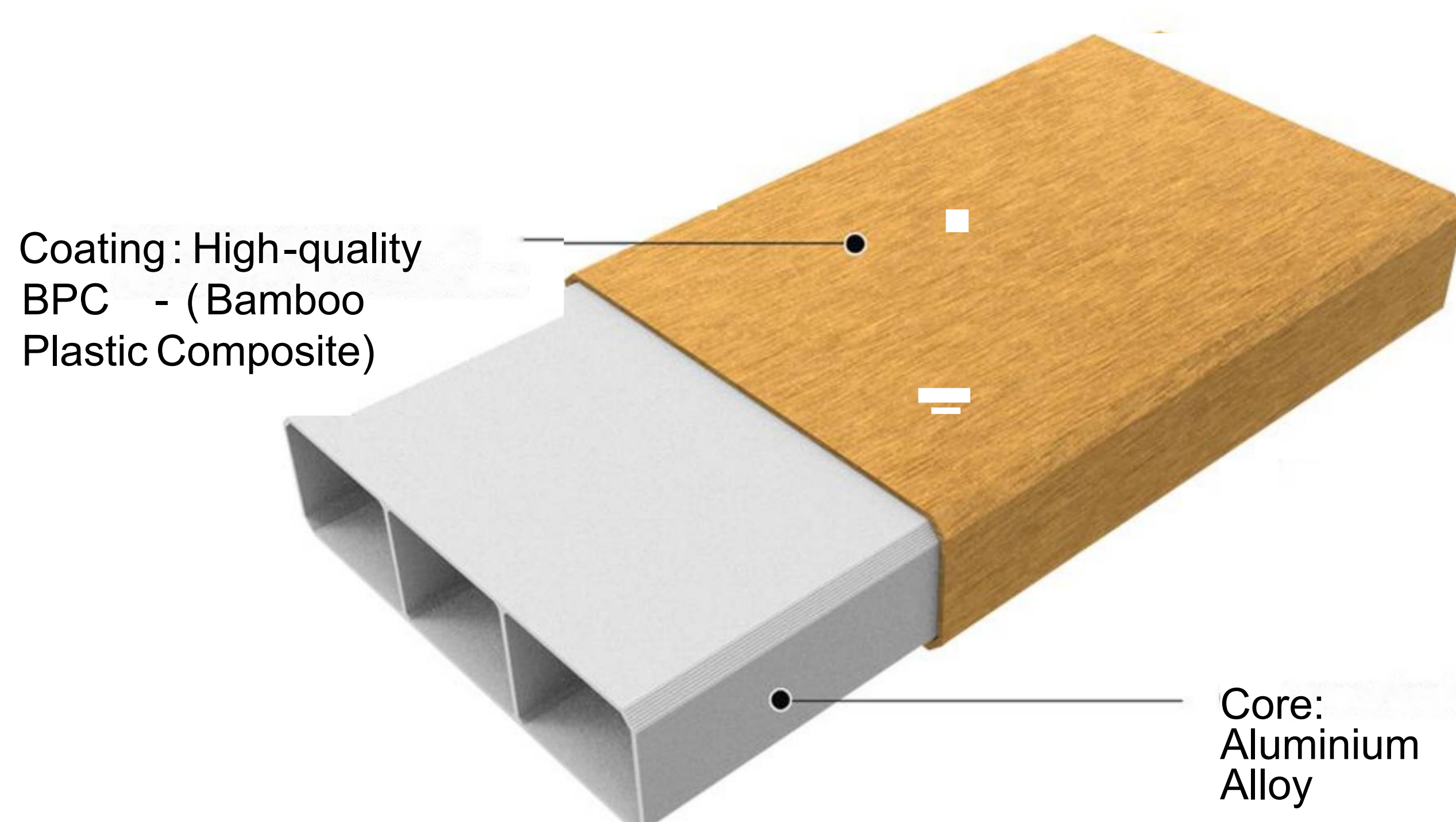
Aluminum alloy made according to national standard has high dimensional accuracy , so that the fitness of decorative bems and accessories is higher and firmer .



Natural appreance

Differing from painted aluminium or aluminium with plastic mebrane, BPC (Bamboo plastic composite) coating with 60% natural bamboo fibra presents a natural wood look like solid timber.

Material Analysis



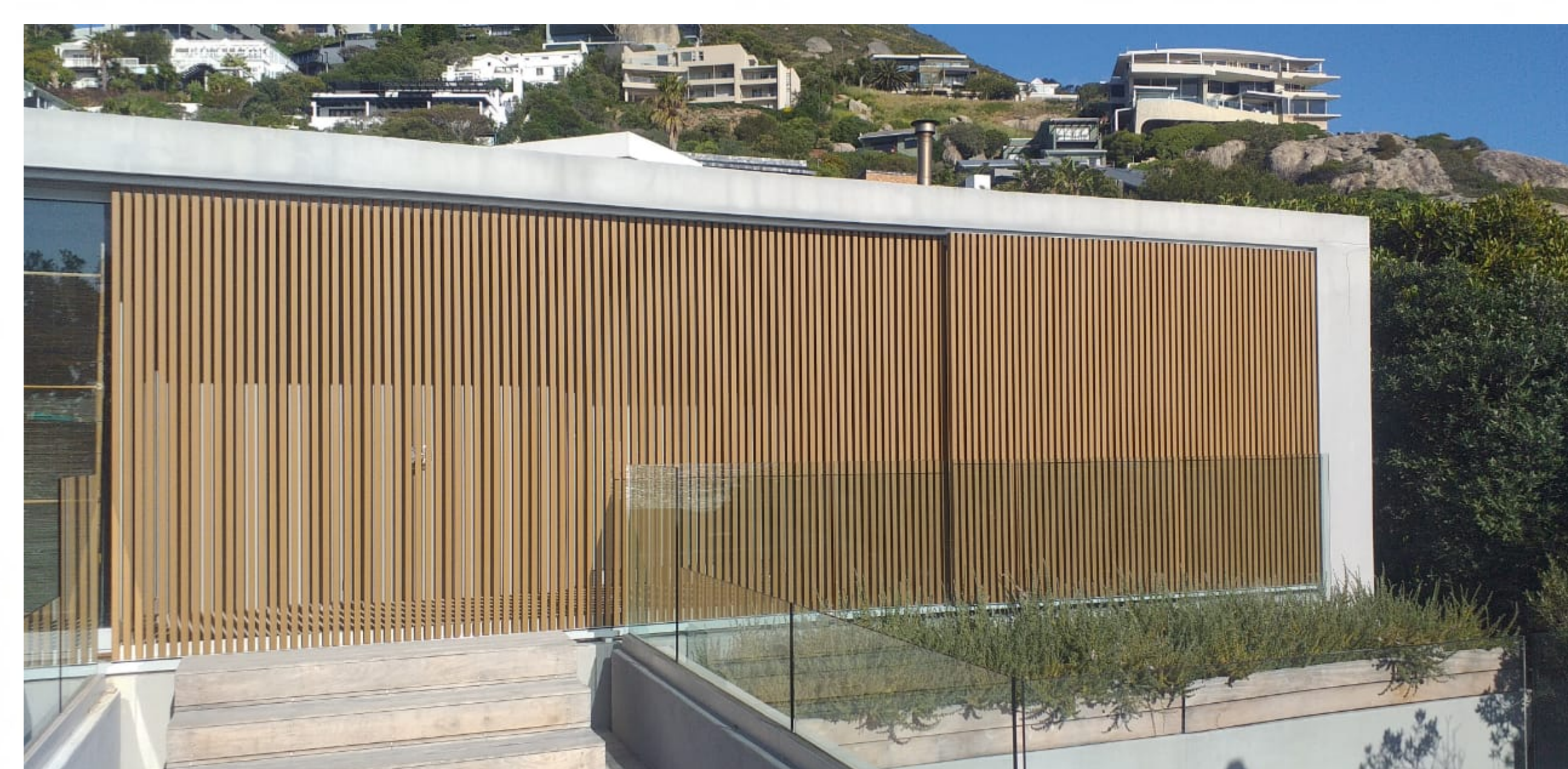
Natural
Bamboo Fiber



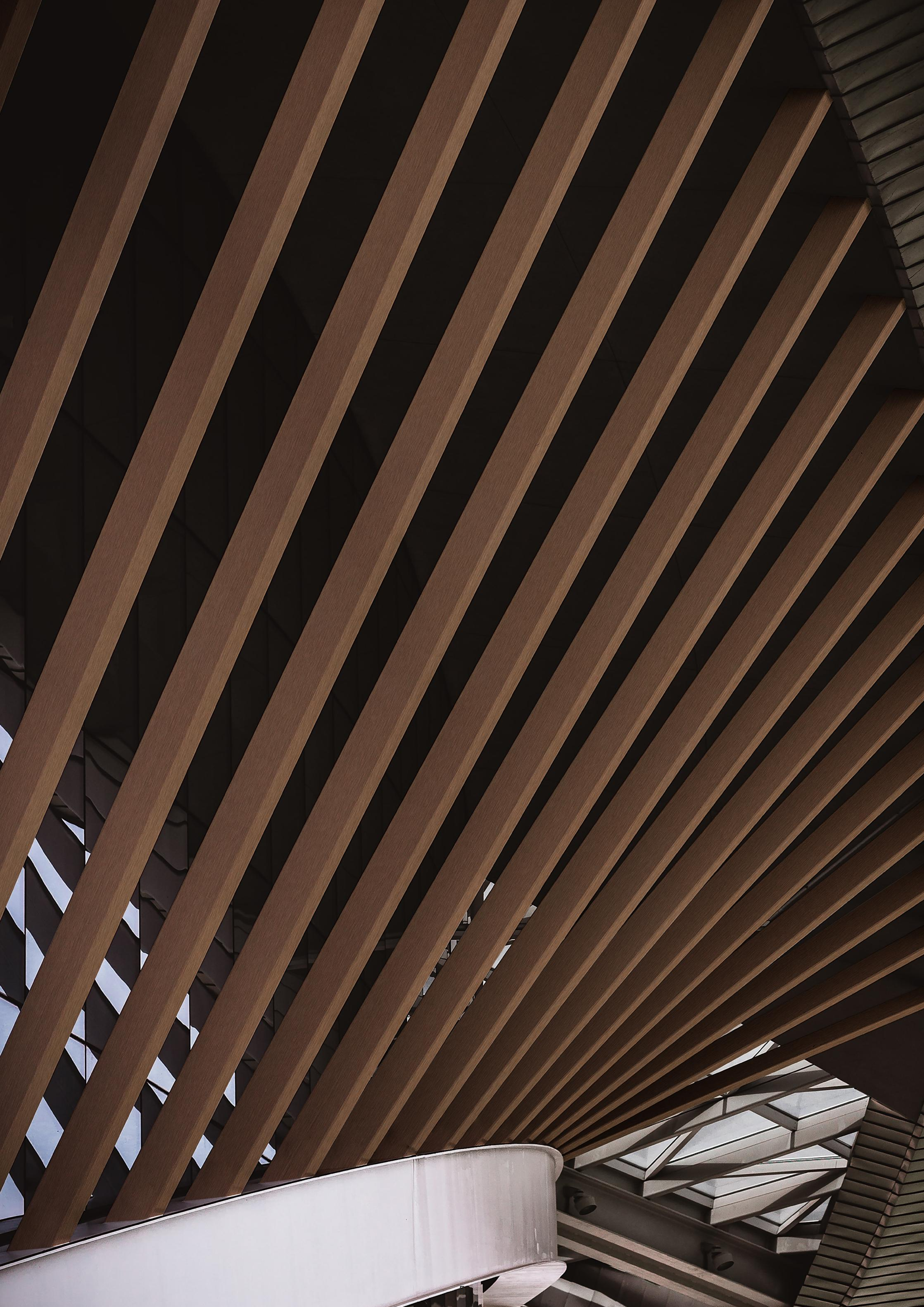
Recycled plastic



BPC (Bamboo plastic
composite)



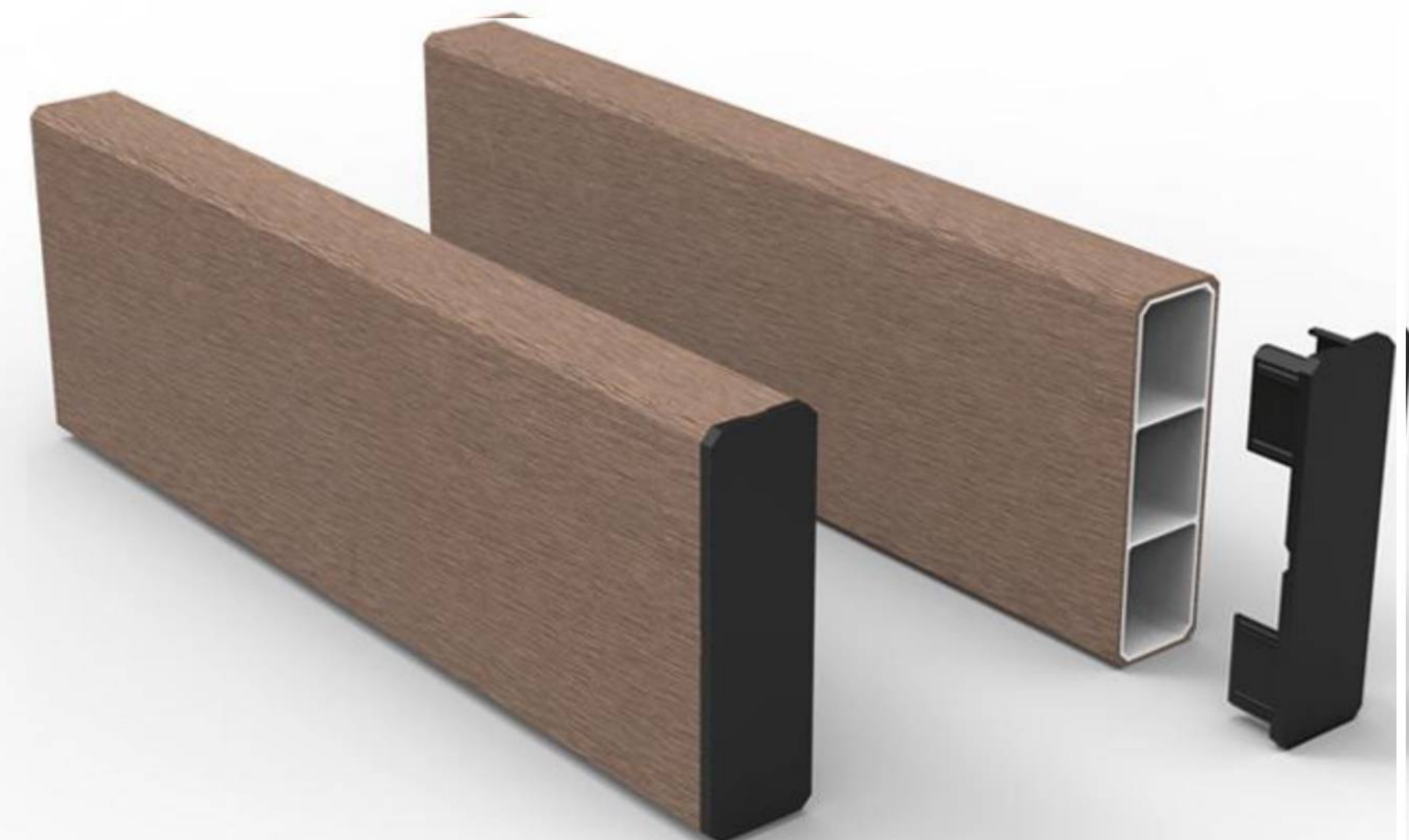
Owing to the stable physical performance and natural appearance of decorative beams, it's an ideal choice for outdoor cladding, facade, sunshade, pergola, gazebo, porch, louver, shutter, screen, railing, ceiling and other long-span building structures.





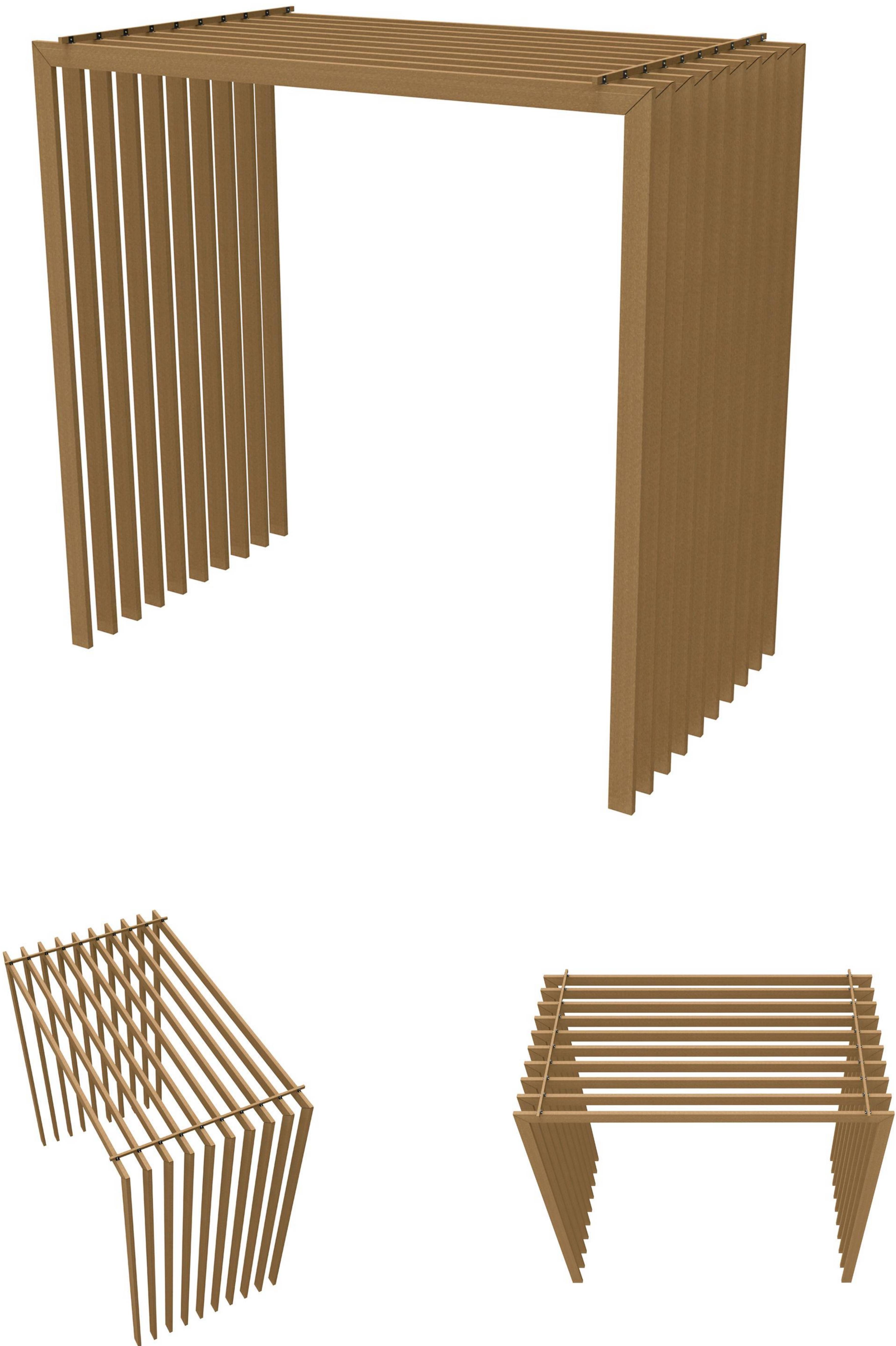


Decorative Beams Sunshade



There are flat WPC end caps and angled end caps for your choice , which can meets your various aesthetic needs . Besides , full set accessories of pergola is settled ,including post stand , post cover , connector piece and etc . BONDECK is always committed to providing quality and comprehensive products for you

Decorative Beams Porch

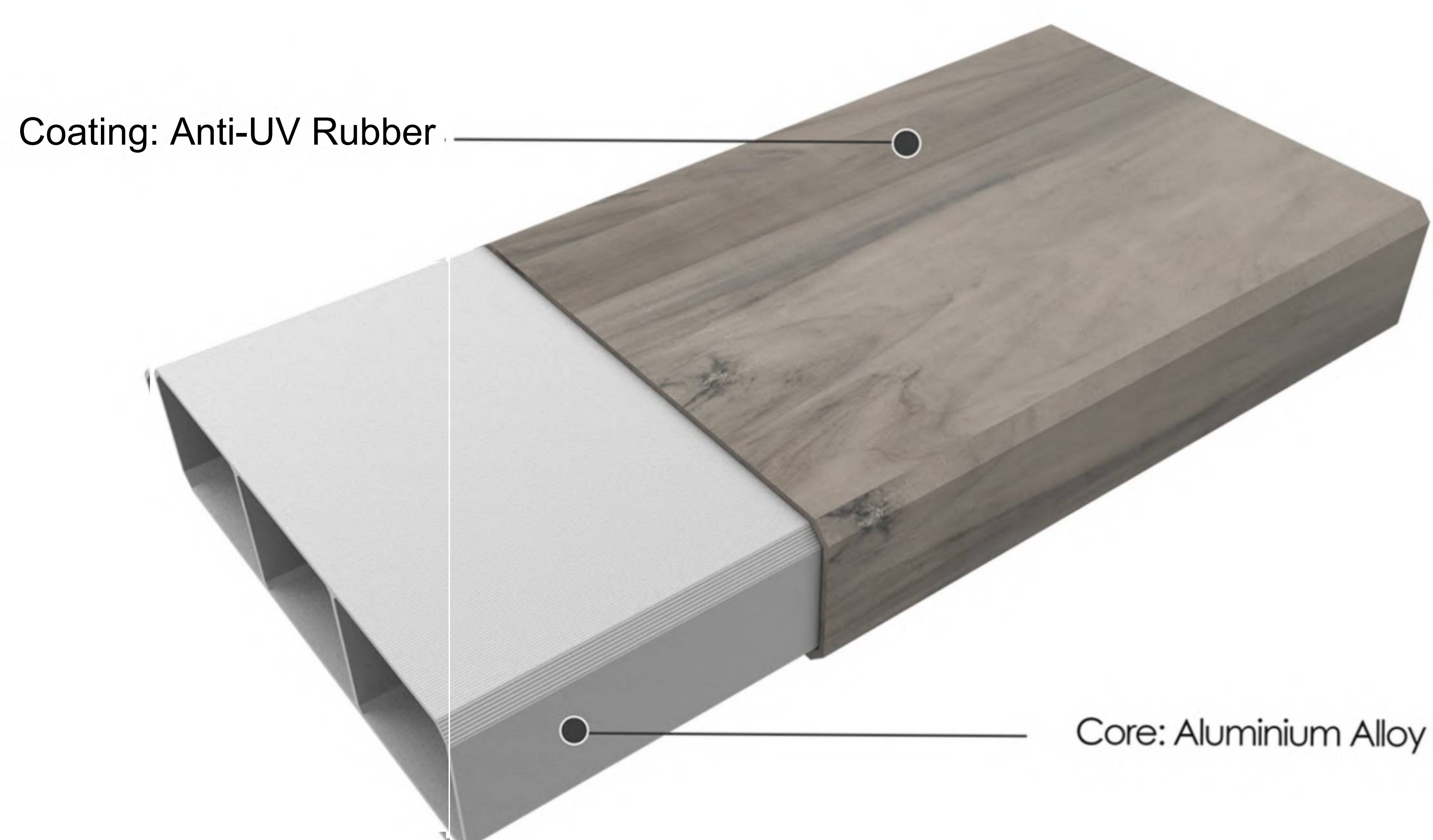








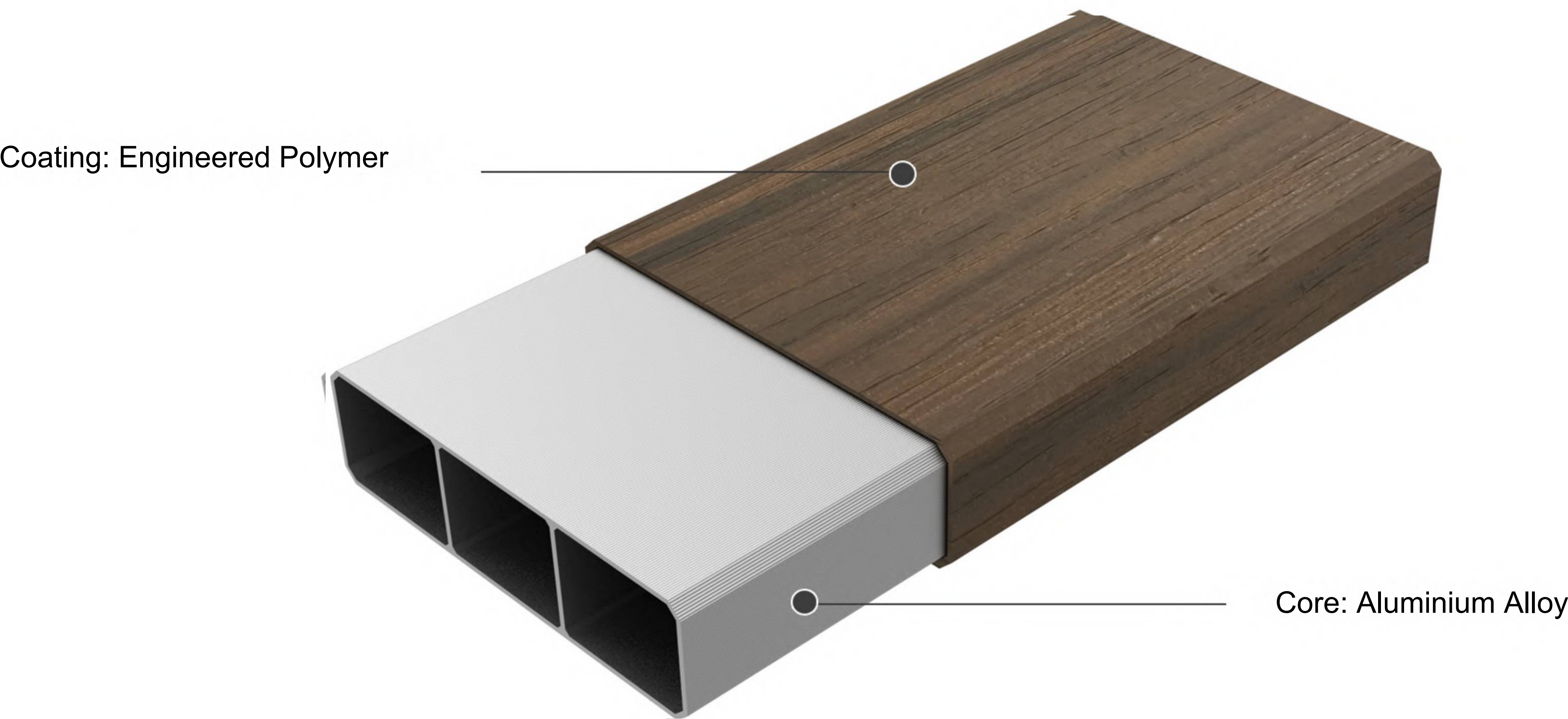
Material Analysis



Decorative Beams has 3 presentations on the coating material, including BPC, Anti-UV elastomer and Shieldtech. When Anti-UV coating is applied to the aluminium alloy, Decorative Beams will offer a better performance in aging resistance. Noise proof factor is another lightspot of elastomer material, so that you'll be free of the tick noises in rainy days.



Material Analysis



Shieldtech coating material can be embossed with various grains. The grain can be consistent with that of your outdoor decking. Besides, there are bi-color choices for Shieldtech coating to meet your various aesthetic appreciation.

Color range

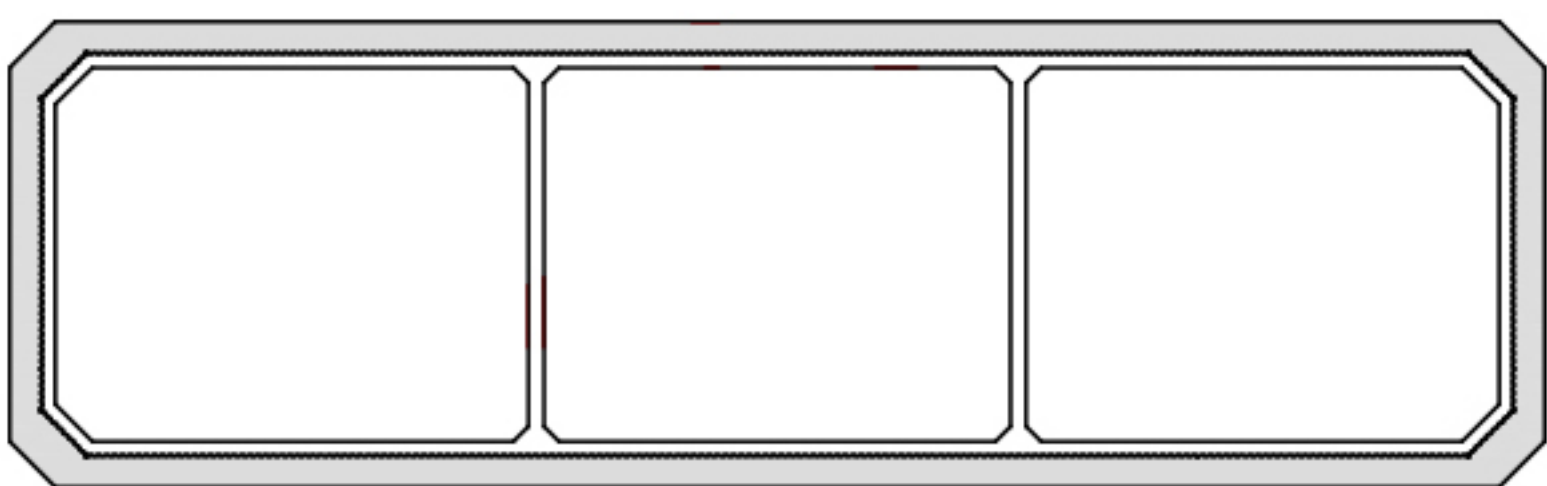
Alu-BPC Color



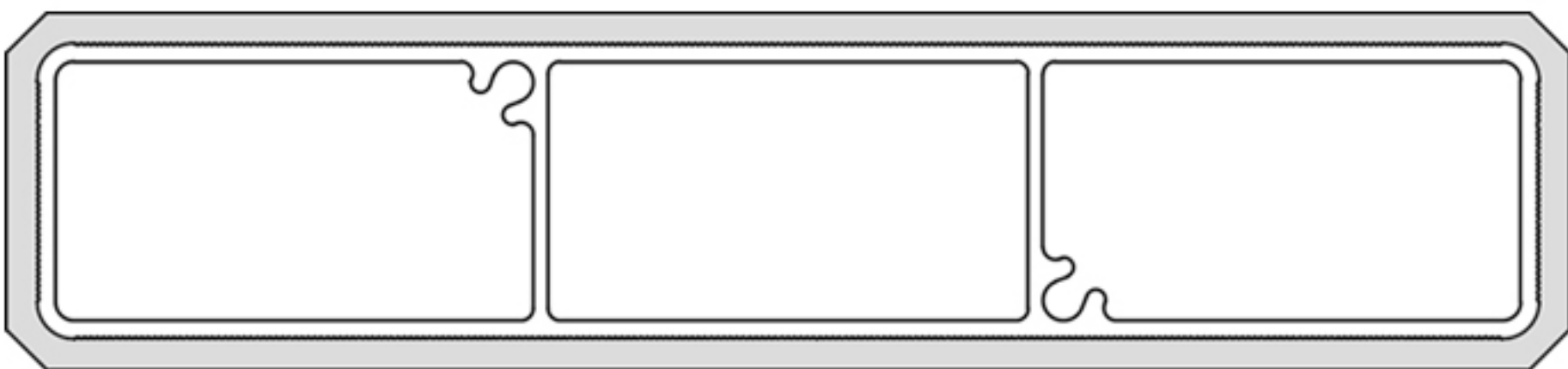
Shieldtech / Alu-Rubber Color



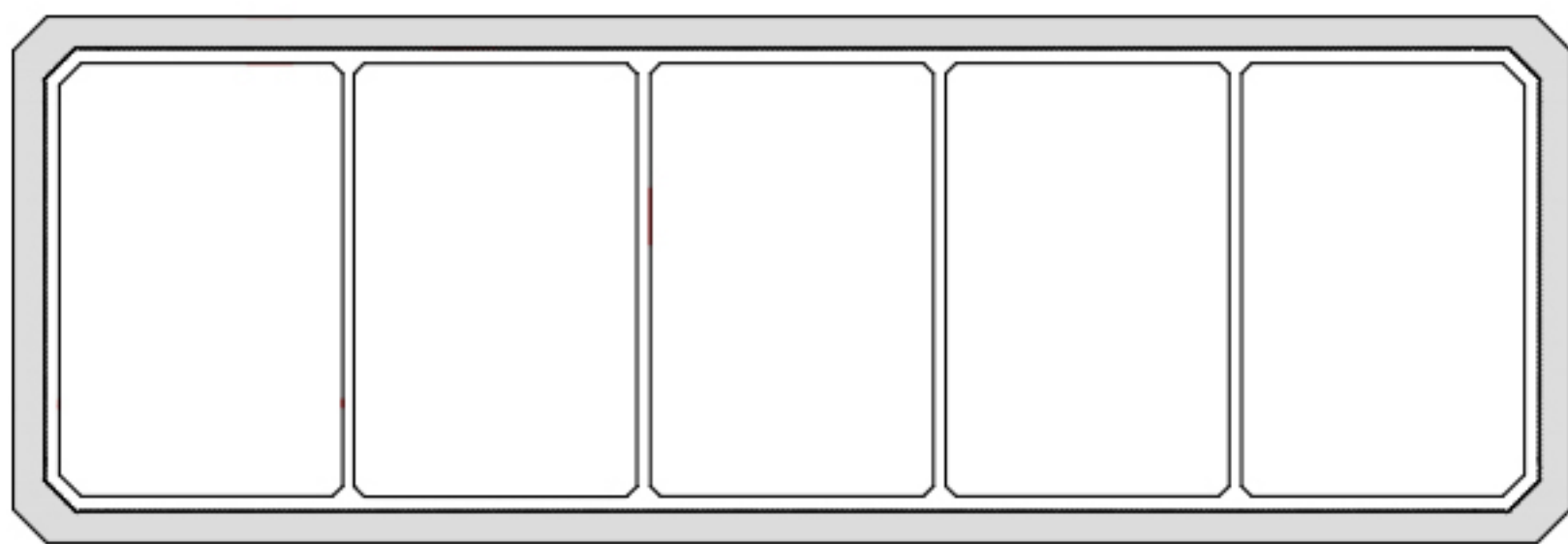
Profile collection



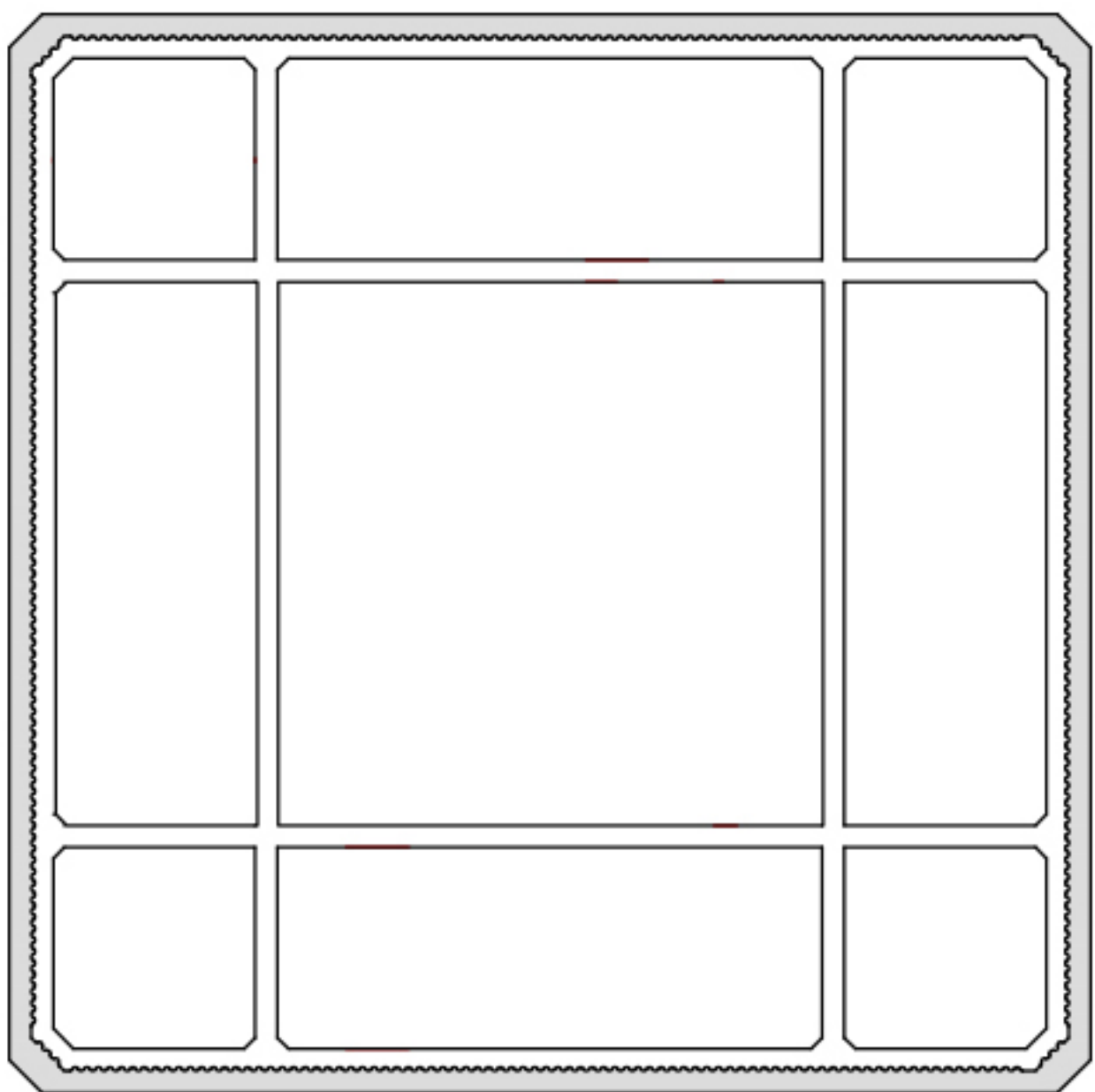
BD-DB01X
(99.5X29.5mm)



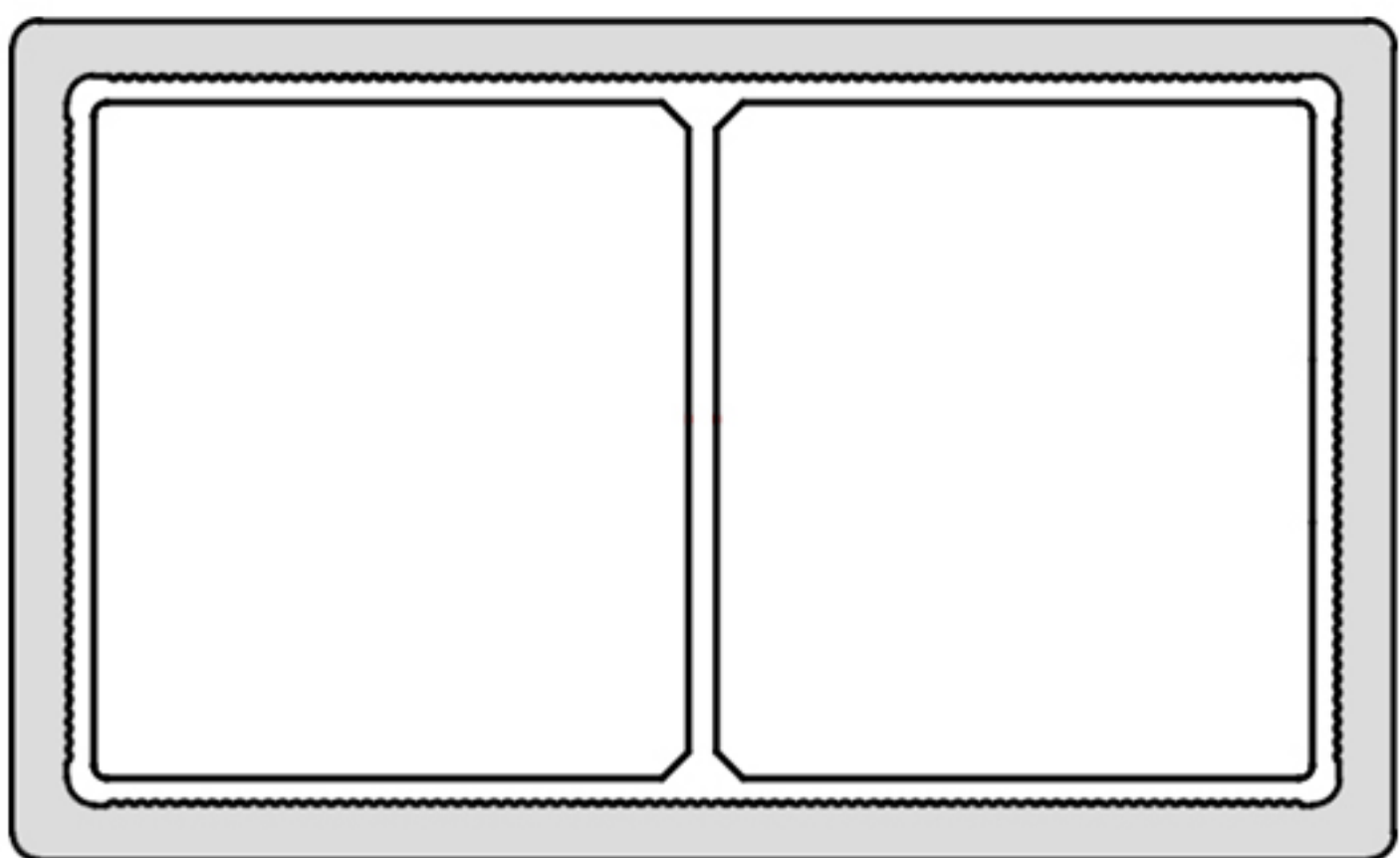
BD-DB04
(126X28mm)



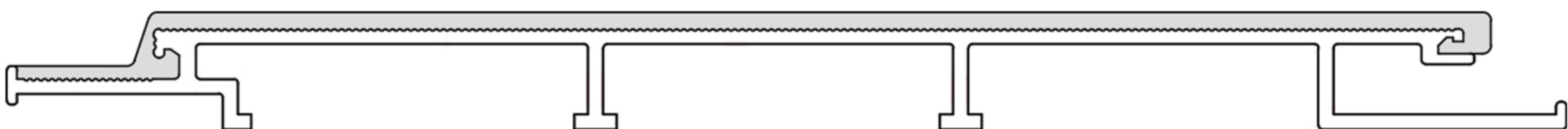
BD-DB02
(150X50mm)



BD-DB06
(96.9X96.9mm)



BD-DB09
(50X30mm)



BD-DB03
(185.5X13.5mm)



Departamento Comercial

Email: geral@bondeck.pt

Departamento Técnico

Email: paulo.coelho@bondeck.pt

Telm: +351 917 527 931

