

Château Haven

ID 3752 FALL 2023

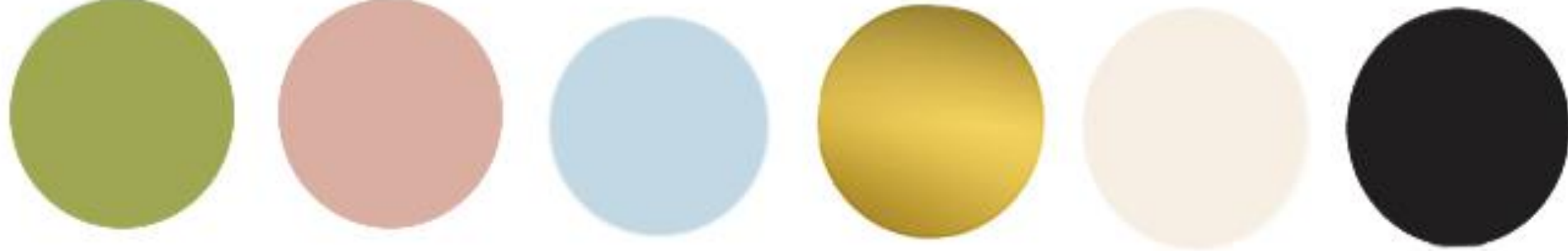
Taylor Stone

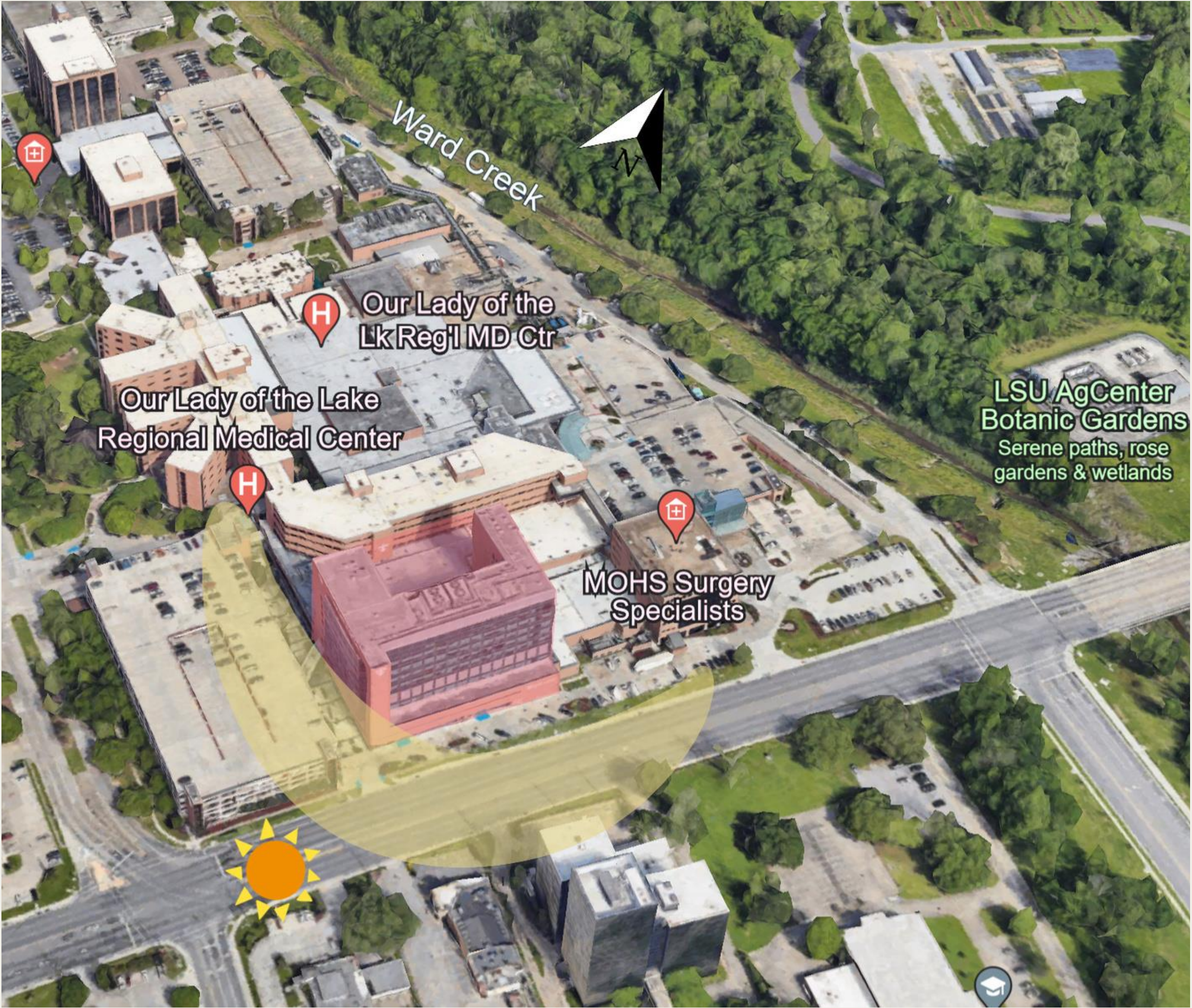


CONCEPT STATEMENT

- Château Haven will be a luxurious home away from home for the patients and caregivers of Our Lady of Lake. As patients undergo such stressful times, Chateau Haven should be a place of respite and refuge for them. This hotel will become a much-needed place of community, providing a space where patients can connect in a less intimidating environment.
- The French design influence creates an atmosphere that transports patients into an elegant space, taking stress off of the hardships they are facing. With this in mind, the hotel works to take patients out of the unsettling setting of a hospital while still providing everything they need and remaining accessible. The furniture, materials, and textures selected aim to create an environment that prompts socialization and positivity. The color palette and elegant design features elevate this space, giving patients a sophisticated atmosphere that pulls them into a refined and refreshing world.
- When patients enter Château Haven it should feel as though they are miles away from their struggles, they should feel at peace. The various accent colors, intricate wallpaper, and patterned tiles come together to create a truly unique and liberating experience that appeals to the senses and promotes healing. Elements such as floral wallpaper and stone textures bring a natural feel that effortlessly merges with the modern design features. The design encompasses the beauty and chic sensibility of French interior design, while also paying homage to Louisiana's French history.
- Château Haven strives to create a sense of comfort and elegance that may have been lost along the way during these patients' treatments.







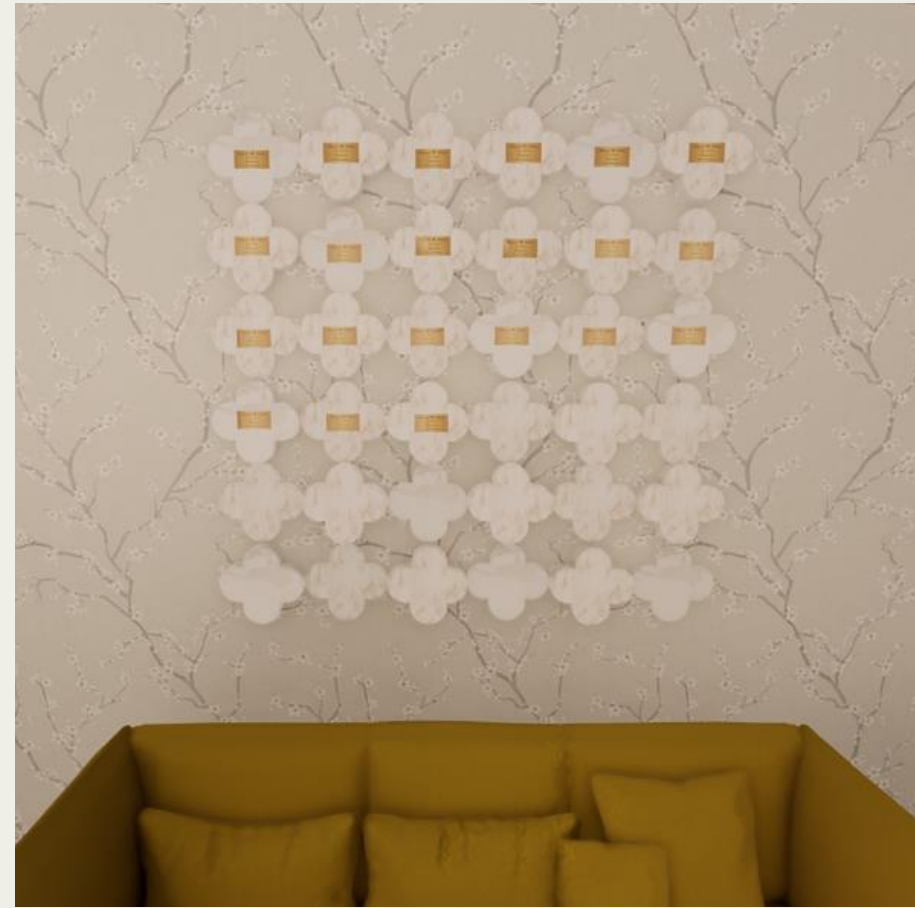


LEGEND

- 1 LOBBY/LOBBY SEATING
- 2 CONFERENCE ROOM
- 3 MANAGER OFFICE
- 4 CHAPEL
- 5 LARGE LOUNGE
- 6 PUBLIC GENDER NEUTRAL RESTROOMS
- 7 EQUIPMENT & STORAGE
- 8 LIBRARY
- 9 BACK OF HOUSE LAUNDRY
- 10 SOILED LINEN
- 11 GUEST LAUNDRY
- 12 KITCHEN
- 13 DINING AREA\
- 14 PANTRY
- 15 DAY ROOM
- 16 PHYSICAL THERAPY
- 17 EXAM ROOM
- 18 OCCUPATIONAL THERAPY
- 19 FITNESS CENTER
- 20 GUESTROOMS
- 21 DAY ROOM
- 22 IT ROOM
- 23 STAFF BREAK ROOM
- 24 CUSTODIAL CLOSET
- 25 ASSISTANT MANAGER OFFICE
- 26 TERRACE
- 27 ELEVATORS
- 28 MECHANICAL SHAFT



LOBBY



DONOR WALL



WALLPAPER



CHAPEL



ACCENT TILE



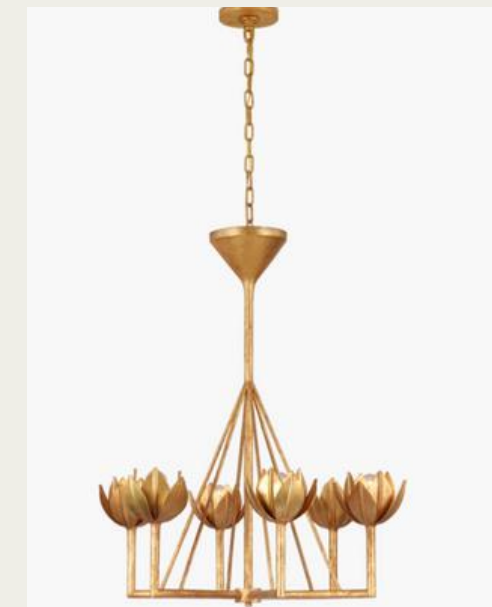
LIGHTING FIXTURE



KITCHEN



COUNTERTOP



LIGHTING FIXTURE



DINING AREA



FLOORING



TABLE



LIBRARY



TILE FLOOR



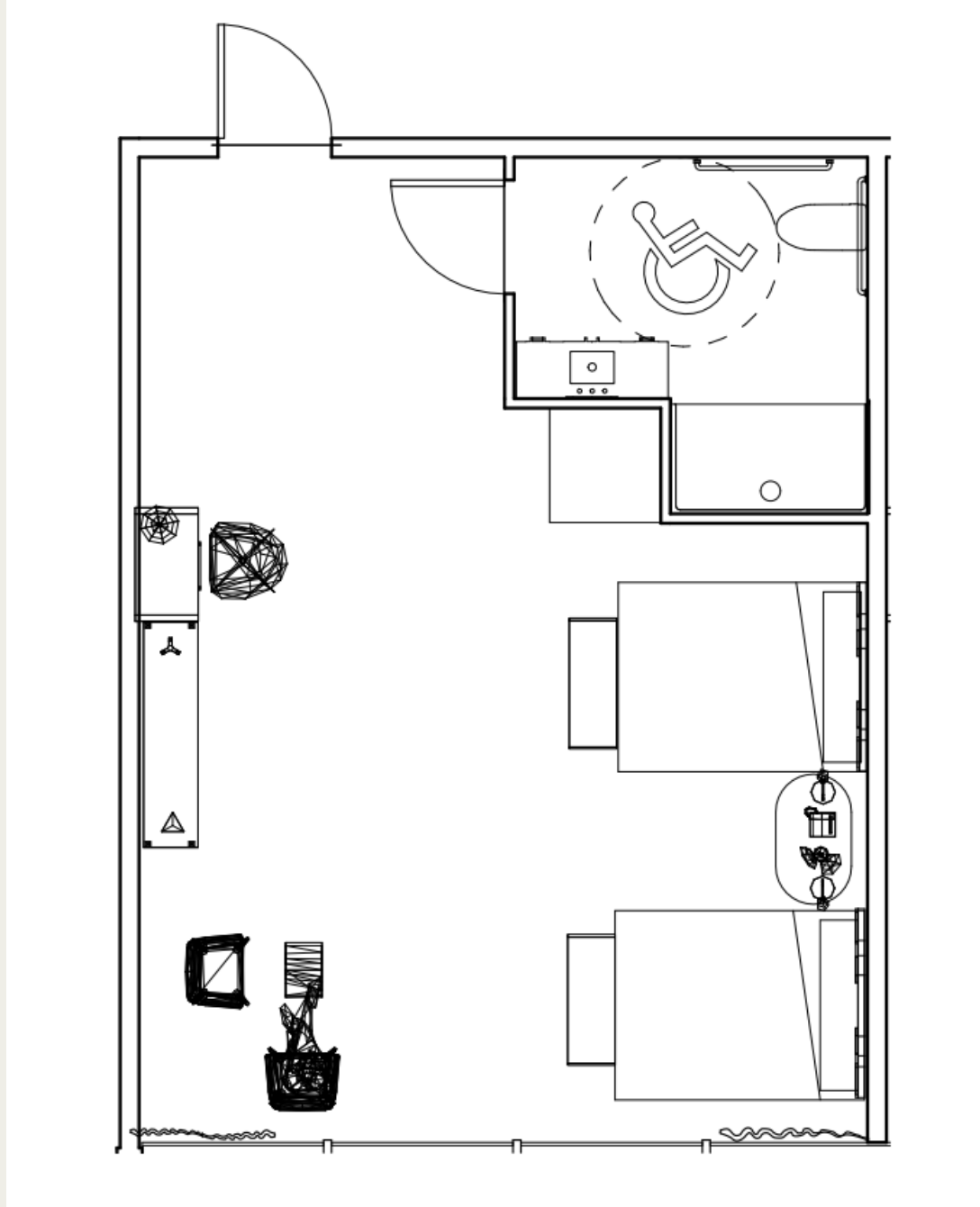
RUG



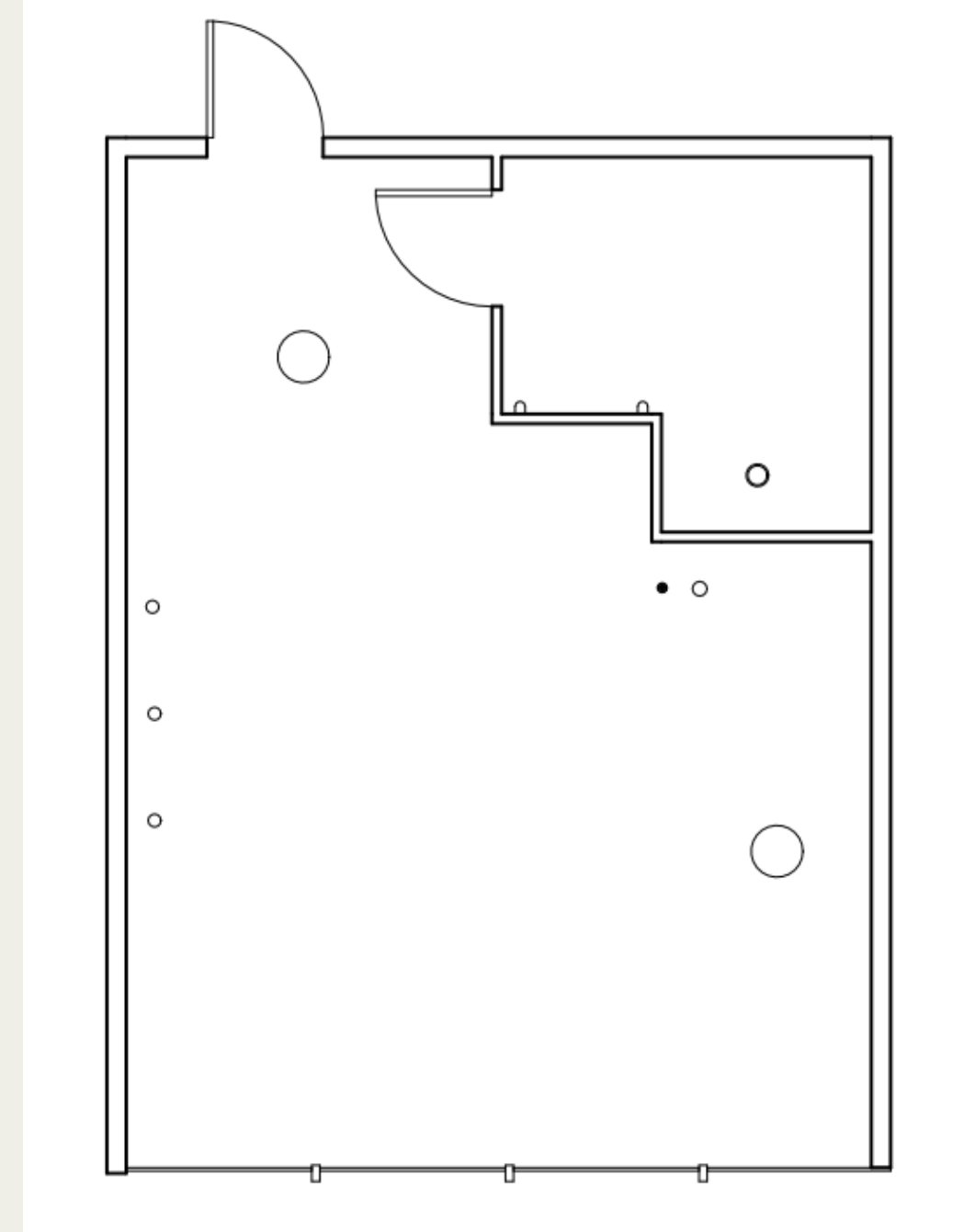
ART



GUEST ROOM - FLOOR PLAN AND RCP



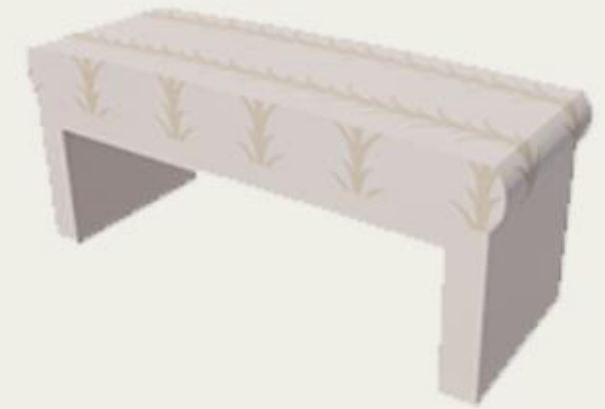
FLOOR PLAN



REFLECTED CEILING PLAN



GUEST ROOM



BENCH



HEADBOARD



ART



DAY ROOM



FLOOR



RUG



CURTAINS



Thank you.

Taylor Stone

