



MOVING MISSOURI FORWARD

TRANSPORTATION SUMMIT



Wednesday, April 16 - Friday, April 18, 2025
DOWNTOWN COLUMBIA, MO

[LOMOCOMO.ORG/SUMMIT](https://lomocomo.org/summit)



WELCOME

We are thrilled to welcome you to the 2025 Moving Missouri Forward Summit in Columbia, MO!

This summit brings advocates, experts, and community leaders together to explore the challenges and opportunities shaping Missouri’s transportation future. From addressing car dependency and mobility justice to advancing public transit, pedestrian safety, and active transportation, our diverse lineup of presentations and discussions will inspire action and innovation.

Columbia provides a fitting setting to examine how transportation impacts equity, public health, and community development. As a participant, you’ll gain valuable insights, connect with like-minded professionals, and learn strategies to build a more accessible, sustainable, and people-centered transportation system. We invite you to engage, collaborate, and leave with fresh ideas and renewed energy to help move Missouri forward.

Let’s get to work!

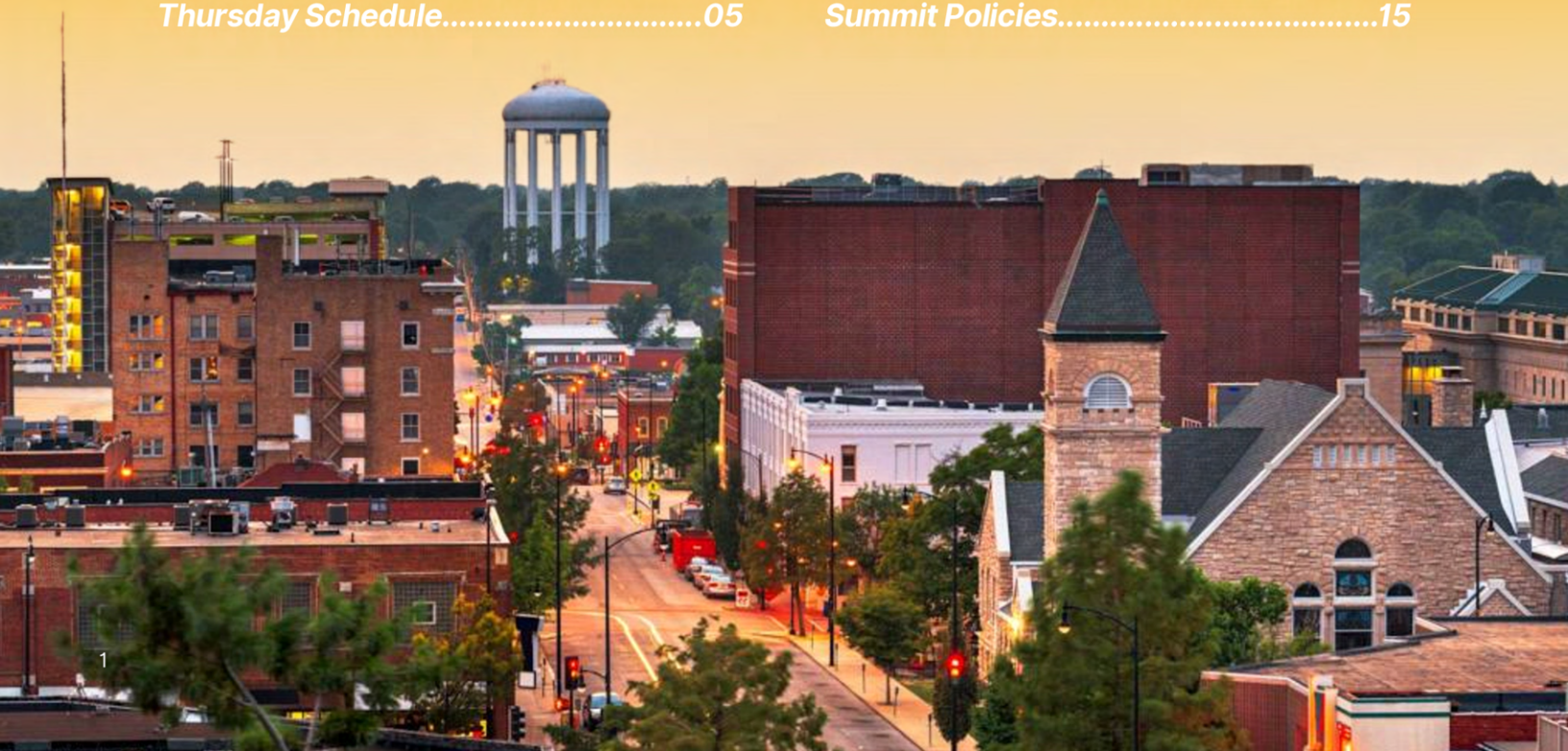


Gabi Jacobs
Communications & Outreach Director
of Local Motion

TABLE OF CONTENTS

Thank you’s..... 02
Summit Information..... 03
Wednesday Schedule & Speaker.....04
Thursday Schedule.....05

Thursday Presentations.....06
Thursday Panelists..... 08
Thursday Evening.....12
Friday Schedule & Presentations.....13
Summit Policies.....15



THANK YOU

We sincerely thank the **Moving Missouri Forward Summit Steering Committee** for their dedication, insights, and hard work. Their commitment has been essential in shaping this event and making it successful. Listed below are the dedicated members of our committee.

Aaron Williams, Penn Services

Aimee Wehmeier, Starkloff
Disability Institute

Charles Bryson, Trailnet

Earl Simms, Paraquad

Eric Rogers, BikeWalkKC

Jackson Hotaling, Missourians for
Responsible Transportation

Jacob Ray, Columbia Public Works
Department

John Montgomery, Ozark
Greenways

Kayla Langford, Missouri Department
of Health and Senior Services

Lillian Hinkson, Department of
Transportation Highway Safety Division

Mallory Rusch, Empower Missouri

Shawn Hull, Bike Walk Joplin

Taylor March, Missourians for
Responsible Transportation

Theresa Lee, Boonslick Regional
Planning Commission

Tina Hang, McDonald County Health
Department

Michael Kelley, Summit MC

A huge thank you to our Conference MC, Michael Kelley! As Policy Director at BikeWalkKC, Michael advocates for policies, plans, and projects that improve walking, rolling, biking, and public transit across the bi-state Kansas City region and beyond.

Michael will introduce our keynotes, provide daily rundowns, and keep everyone informed about upcoming activities. He's also a panelist in **Missouri's Need for a Statewide Active Transportation Plan**, so be sure to check out his section in this booklet to find out more about him and hear from him directly during the panel on Thursday afternoon!



The Moving Missouri Forward Summit is hosted by Local Motion, whose mission is to provide walking, biking, and transit solutions that meet people's everyday transportation needs. This event would not have been possible without the generous support of the Missouri Foundation for Health. We are grateful for their commitment to advancing transportation solutions across Missouri.



Missouri Foundation
for Health

SUMMIT INFORMATION

WIFI INFO




Wi-Fi is available throughout the meeting space. Connect to the network "**Hilton Honors Meeting**". The splash page will load shortly after the connection is complete. Select "I have a promotional code," and enter in "**Tree25**".

PHOTOGRAPHY NOTICE

Photographs and videos will be taken at this summit, and by participating, you grant Local Motion the right to use your name and image for promotional materials and social media.

SOCIAL MEDIA

Feel free to tag us on social media!

 @movingmoforward
 @LocalMotionCoMo
 local-motion-como

Or use hashtag
#movingmoforward2025

VENUE INFORMATION

Find information below on who to contact if you have any issues, questions, or concerns. If you have any issues with the hotel, please don't hesitate to visit the front desk.

LOCAL MOTION CONTACTS



Gabi Jacobs

Communications & Outreach Director
Gabi@LoMoCoMo.org
573-999-9894



Judy Steinhoff

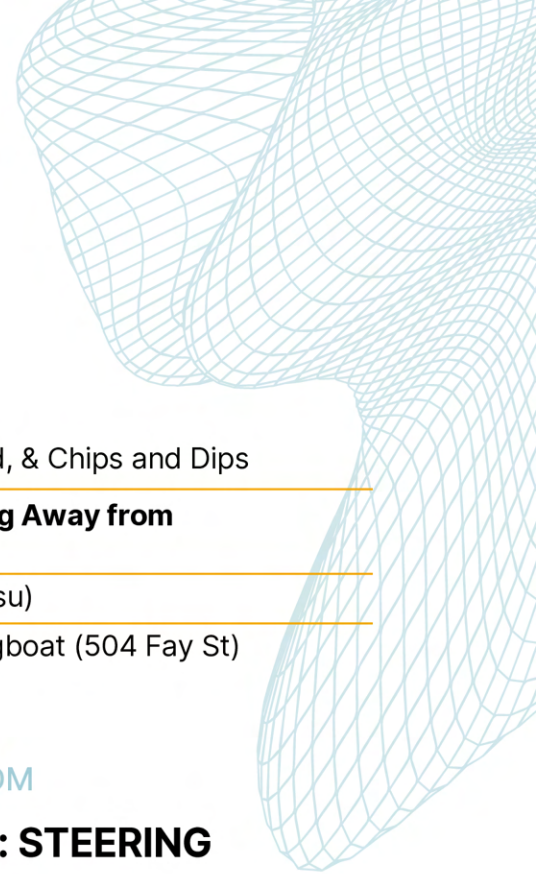
Operations Coordinator
Judy@LoMoCoMo.org
573-999-9894

We have included details on each of the meals you can expect in the booklet. You should have already shared any details about dietary restrictions, preferences, or allergies with us, but if there is anything that has not been shared with us, please inform the staff immediately. Vegetarian options will be available at every meal and snack. If you have indicated any other allergies, we will provide a meal substitution for you.

BEVERAGES

Water will be available the entirety of the summit, and we encourage participants to bring or save cups to re-use. Bottled soda, coffee, and tea will be available during all snack and meal breaks.

WEDNESDAY



APRIL 16 SCHEDULE

ROOFTOP BALLROOM

2:30 - 4:15

Check-In / Networking
Snacks: Bruschetta and Pesto, Charcuterie Board, & Chips and Dips

4:30 - 6:00

Keynote: **When Driving Is Not an Option: Steering Away from Car Dependency**, *Anna Zivarts*

6:00 - 7:00

Dinner: Italian Buffet (Salad, Pasta, Bread, Tiramisu)

8:00 - 10:00

Optional: Off-site Networking Opportunity @Logboat (504 Fay St)



KEYNOTE SPEAKER, ROOFTOP BALLROOM

WHEN DRIVING IS NOT AN OPTION: STEERING AWAY FROM CAR DEPENDENCY

Anna Zivarts, Author of When Driving Is Not an Option

One third of people living in the United States do not have a driver license. The majority of involuntary nondrivers are disabled, lower income, unhoused, formerly incarcerated, undocumented immigrants, kids, young people, and the elderly. They are also largely invisible due to a mobility system designed almost exclusively for drivers.

When Driving is Not an Option shines a light on the reality for non-drivers and explains how improving our transportation system with nondrivers in mind will create a better quality of life for everyone. This book is written by a low-vision mom, disability advocate, and fellow non-driver Anna Letitia Zivarts.

During this event, Zivarts will explain that when the needs of involuntary nondrivers are viewed as essential to how we design our transportation systems and our communities, not only will we be able to more easily get where we need to go, but the changes will lead to healthier, climate-friendly communities for everyone.



OFF-SITE NETWORKING OPPORTUNITY

@Logboat Brewing Co. (504 Fay St)

Interested in walking to this networking opportunity? Join us in the lobby of The Broadway Hotel at 7:30 pm to walk over together! The walking group will leave The Broadway Hotel at 7:45 pm for the 0.6-mile stroll to Logboat Brewing Co.

Logboat is a Columbia staple with many options, like beer, cider, and N/A drinks! While we won't cover your drink, we **will** have a tasty sweet treat for you!

Please **bring your lanyard** so others can easily see your name!

THURSDAY

APRIL 17
SCHEDULE

	ROOFTOP BALLROOM (SKYLINE)	ROOFTOP BALLROOM (VISTA)	TERRACE ROOM
8:00 - 9:00	Breakfast: Buffet (Pastries, Fruit, Eggs, Bacon, Potatoes)		
9:00 - 10:30	Keynote: The Right to Move: Why Mobility Matters More Than Ever , <i>Charles Brown</i>		
10:45 - 11:30	Advocacy 101 , <i>Sarah Owsley</i>	A Public Health Perspective on Transportation Equity , <i>Hannah Conner</i>	Pedestrian Pride Walking Tour: Seeing Downtown Columbia on Foot
11:30 - 12:00	Snack: Fresh Fruit Display & Seasonal Hummus Board		
12:00 - 12:45	Bike Bus: The Impacts of Riding to School , <i>Christina Williams</i>	Getting S.M.A.R.T. About Paratransit Advocacy , <i>Earl Simms & Teona McGhaw-Ward</i>	
1:00 - 2:00	Lunch: Deli Buffet (Soup, Salad, Sandwich Fixings, Brownies)		
2:15 - 3:30	Quick Builds and Rapid Development Panel (Bailey Waters, Dane Eifling, & Nick Voss)	Funding the Future: Turning Transportation Plans into Reality Panel (Ashley Buechter, Christy Evers, Leslie Herring, & Scott Ogilvie)	Walk Audit: Assessing Streets for a More Connected Community
3:30 - 4:00	Snack: Spinach and Artichoke Dip & Cheese Board		
4:00 - 5:15	Urban/Rural Divide: Challenges and Commonalities Panel (Dorothy Yeager, Kelly Ast, & Sheridan Garman-Neeman)	Missouri's Need for a Statewide Active Transportation Plan Panel (Doug Hernes, Jollyn Tyryfter, Matt Messina, & Michael Kelley)	
5:15 - 6:00			Organization Tabling
6:00 - 7:00	Dinner: Tex-Mex Buffet (Chips, Queso, Salsa, Tacos, Quesadillas, Rice, Beans, Churros)		

The Terrace Room will be where we gather for all the mobile tours, the Organization Tabling Event, and where folks can store luggage on Friday. It is on the first floor of this tower and can be accessed by elevator or stairwell immediately outside of the main ballroom.

If you're representing your organization at the tabling opportunity on Thursday afternoon, you can set up your booth during any snack or meal break throughout the day (8:00-9:00 AM, 11:30 AM-noon, 1:00-2:00 PM, 3:30-4:00 PM). Please also plan to clean up your booth between 6-7 PM that evening.





➔ KEYNOTE SPEAKER, ROOFTOP BALLROOM

THE RIGHT TO MOVE: WHY MOBILITY MATTERS MORE THAN EVER

Charles Brown, MPA, CPD, LCI - Champion for Transportation Equity, Global Thought Leader, and Advocate for Justice

In *Arrested Mobility: Overcoming the Threat to Black Movement*, Charles T. Brown, founder and CEO of Equitable Cities, examines why mobility is not afforded in the same way to everyone. He argues that the legacy of structural racism and White supremacy has led to disinvestment and over-policing in Black communities and communities of color, thwarting opportunity, as physical mobility and social mobility are intrinsically linked. This experience for Black people around the world is what Brown refers to as arrested mobility.

Brown examines this condition that society has created through what he calls “The Four Ps”: Polity, Policy, Planning, and Policing and suggests solutions, some of which are already being implemented in the US. Drawing from research, his own experience, and the experience of other Black Americans, Brown shows that change is possible and inspires and guides readers to un-arrest mobility together.



➔ THURSDAY, 10:45-11:30 AM, BALLROOM SKYLINE

ADVOCACY 101

Sarah Owsley, Advocacy Director of Empower Missouri

Advocacy 101 will teach advocates, impacted people, and not for profit staff how to share their experience with elected officials. Geared towards the Missouri state legislature, these skills can help you advocate for systems change at many levels. Decision makers must hear from the experts, including you. Policy advocacy doesn't need to feel scary or overwhelming, and you will leave this training with the basic education needed to grow your skills and demystify the process to have the greatest impact on the lives of our neighbors.



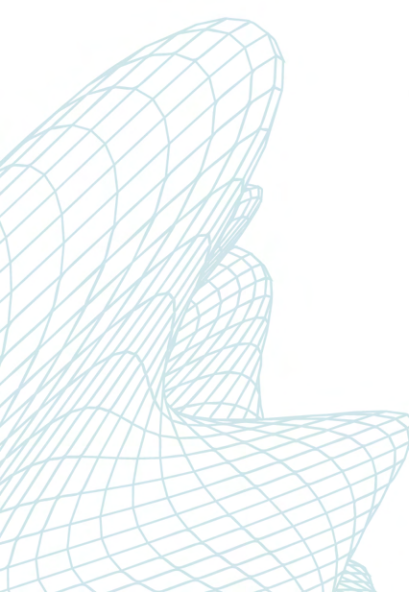
➔ THURSDAY, 10:45-11:30 AM, BALLROOM VISTA

A PUBLIC HEALTH PERSPECTIVE ON TRANSPORTATION EQUITY

Hannah Conner, Epidemiologist at Kansas City University

Transportation is a necessity for nearly every person's daily life. Community members frequently calculate how to efficiently get groceries, commute to work or school, see a health care provider, or even connect with loved ones.

Transportation is more than how to get from Point A to Point B; it is a critical component to people's well-being. Thoughtful and equitable transportation infrastructure contributes to improved public health in several ways. First, infrastructure for safe active transportation like traffic calming tools and designated bike and walking paths can prevent traffic injuries and fatalities. Traffic fatalities soared during the COVID-19 pandemic and have yet to return to pre-COVID levels. In Missouri, there were 1,057 traffic fatalities in 2022 (NHTSA, 2024), and there were 130 and 126 pedestrian deaths in 2022 and 2023 respectively (Governors Highway Safety Association, 2024). Second, increasing opportunities for active transportation, e.g. walking and biking, can lead to better health through increased access to resources such as healthcare, employment, and food. Third, diverse and person-centered transportation options that are tailored to the needs of the community ensure that all community members are able to participate equitably in transportation. Ensuring that roads are navigable to people of all ability levels and that there is equitable investment in all communities, including rural and historically marginalized communities, will lead to a more just Missouri.



MOBILE TOUR

Pedestrian Pride Walking Tour: Seeing Downtown Columbia on Foot

➔ TERRACE ROOM,
10:45 AM-11:45 PM

Join Pedestrian Pride for a guided walking tour (~1.5 miles) of downtown Columbia that explores the pedestrian experience through the lens of equity, design, and access. This tour will highlight key areas where infrastructure supports walkability — and where it falls short. Along the way, we'll discuss how the built environment shapes mobility for all users, particularly those who rely on walking, rolling, or public transit to meet their everyday needs. Participants will leave with a deeper understanding of how street-level design impacts real-world movement through the city.

* 1.5 MILES



➔ THURSDAY, 12:00-12:45 PM, BALLROOM SKYLINE

BIKE BUS: THE IMPACTS OF RIDING TO SCHOOL

Christina Williams, Bike Bus Leader at Bike Walk Joplin

What is a bike bus? It's a coordinated, group Active Transportation to School generally consisting of one or more parent volunteers who lead students on a bike ride along a defined route to school. But, it's so much more than that... Providing opportunities for students to walk and bike safely to school is critical to a healthier community.

Learn about how Joplin's small bike bus began and how parents or volunteers can implement a bike bus or walking bus program in their community. Discover the transformative impacts riding to school together has on the students, their neighborhood, and our perceptions about commuting and community building.

Explore examples of resources, infrastructure challenges, and obstacles families face in choosing active transportation to school.



➔ THURSDAY, 12:00-12:45 PM, BALLROOM VISTA

GETTING S.M.A.R.T. ABOUT PARATRANSIT ADVOCACY

Earl Simms, Public Policy & Advocacy Manager at Paraquad & Teona McGhaw-Ward, Organizing and Advocacy Specialist at Paraquad

This presentation will offer an in-depth look at Paraquad's advocacy and organizing efforts concerning the paratransit service, Call-a-Ride, in our region. Starting in January 2023, issues like ride denials, long wait times, and a reduced service area prompted a significant advocacy campaign. We will discuss Call-a-Ride's chronic problems, the formation of the St. Louis Alliance for Reliable Transit (S.M.A.R.T.) in response to these issues, and the strategic actions taken over the last two years under Paraquad's guidance.

This grassroots movement has led to leadership development within the disability community, as well as impactful enhancements in Metro's Call-a-Ride service, including partial service restoration, employment of an independent ADA compliance consultant, and improved communication with Bi-State Development's leadership.

S.M.A.R.T. began with just six advocates in February 2023 but expanded to over 100 by the end of 2024. Their activities included public testimonies, media engagements, and issuing a quarterly report card to Bi-State Development, local policymakers, and the media, significantly influencing the St. Louis community. S.M.A.R.T. continues to lead in the push for accessible, reliable public transit. Our local-focused efforts have also developed a scalable model, aiming to form a coalition for securing high-quality, affordable public transportation statewide.



PANEL DISCUSSION QUICK BUILDS AND RAPID DEVELOPMENT



Bailey Waters, Chief Mobility Officer at City of Kansas City, Missouri

Bailey Waters serves at the Chief Mobility Officer for the City of Kansas City, Missouri. She has been there since 2022 and has helped the City start building a separated bike lane network. She also helps lead the City's Vision Zero program aimed at eliminating traffic fatalities.



Dane Eifling, Mobility Coordinator at City of Fayetteville Arkansas

Dane Eifling began working at the City of Fayetteville in 2014 as the City's first Bicycle and Pedestrian Coordinator. From 2018-2020 Dane served in a joint role as the Bike/Pedestrian Coordinator for both the University of Arkansas and City. In 2020, Dane began a full-time role as the City's first Mobility Coordinator with responsibilities including transit, micro mobility, traffic calming, Tactical Urbanism, walkability and bicycle network planning. Dane is a Fayetteville native; he serves part time in the U.S. Navy Reserves and has a BA in Human Geography from San Francisco State University.



Nick Voss, Lead Consultant at WSP USA

Nick Voss has worked as a project engineer for the City of Lawrence and with WSP. He has a passion for roundabouts and complete street roadway design and loves when ideas can be implemented to provide benefits to the communities they serve.

MOBILE TOUR

Walk Audit – Assessing Streets for a More Connected Community

Join us for an interactive walk audit (~1.7 miles), where we'll explore the built environment firsthand and assess how our streets serve—or fail to serve—people of all abilities. This guided tour will take participants through key areas of central Columbia, evaluating sidewalks, crossings, transit access, and overall walkability.

Using Local Motion's Community Walk Audit Form as a guide, we'll discuss what makes a street safe and accessible, identify barriers to mobility, and highlight real-world solutions that can be applied anywhere across Missouri. We'll discuss how walkability and access impact livable communities from housing, access to basic needs, and more! Whether you're a transportation professional, advocate, or policymaker, this hands-on experience will provide valuable insights into how infrastructure impacts daily movement and community access.

Lace up your walking shoes and get ready to see the streets through a new lens!

* 1.7 MILES * ACCESSIBLE



PANEL DISCUSSION

FUNDING THE FUTURE: TURNING TRANSPORTATION PLANS INTO REALITY



Ashley Buechter, Assistant State Design Engineer – Local Public Agency Administrator at Missouri Department of Transportation

Ashley Buechter, P.E., works for the Missouri Department of Transportation in the Design Division. She joined the Department of Transportation in June 2006 after receiving her Bachelor of Science in Civil Engineering from the University of Missouri-Columbia in May 2006. Ashley currently serves as the Assistant State Design Engineer – Local Programs Administrator where she provides Local Public Agency oversight, Engineering Policy oversight, and CADD Services oversight. She is also a licensed Professional Engineer in the State of Missouri.



Christy Evers, Administrator of Transit at Missouri Department of Transportation

Christy Evers is the Administrator of Transit for the Missouri Department of Transportation. She oversees the administration and management of the State of Missouri's State Transit Assistance and Missouri Elderly Handicapped Assistance Program, as well as, multiple Federal Transit Administration grants programs. At a local level, Christy serves as co-chair on the State Department Committee under the Missouri Statewide Transportation Taskforce, as well as a committee/board member of the Missouri Public Transit Association, Capital and Columbia Area Metropolitan Planning Organizations, and the Master Plan on Aging Transportation Subcommittee. Nationally, she is a member of the AASHTO Multi-State Transit Technical Assistance Program, American Public Transit Association, Community Transportation Association of America, Citizens for Modern Transit, and AASHTO's Council of Public Transportation.



Leslie Herring, City Administrator at City of Westwood, KS

Leslie Herring is the City Administrator of Westwood, KS. She and her husband have maintained a car-lite lifestyle for over a decade by remaining a one-car household, walking as a primary mode of daily transportation, and regularly utilizing ride-share to reduce parking congestion when visiting nearby urban neighborhoods. Leslie's professional experiences have allowed her to develop depth in the areas of public works and infrastructure, community development and planning, economic development, regionalism, resident engagement, and process improvement. Leslie currently serves as the Kansas Co-Chair of the Bicycle and Pedestrian Advisory Committee at Mid-America Regional Council, as an alternate and regular attendee of the MARC Total Transportation Policy Committee, and is a member of the Technical Assistance Panel Committee for Urban Land Institute Kansas



Scott Ogilvie, Program Manager for Complete Streets at City of St. Louis Planning & Urban Design Agency

Scott is the Program Manager for Complete Streets with the City of St. Louis Planning & Urban Design Agency. He is currently managing the planning process to develop a Transportation and Mobility plan for the City. His role focuses on planning and design for multimodal transportation facilities across the city and transportation policy development and implementation. Before joining the Planning and Urban Design Agency, he served on the St. Louis Board of Aldermen for eight years. While being a champion for active transportation, he passed several pieces of legislation to improve the city's non-motorized transportation amenities and policy, and secured funding to reconstruct the Penrose Park Velodrome, which re-opened in 2019.

PANEL DISCUSSION

URBAN/RURAL DIVIDE: CHALLENGES AND COMMONALITIES



Dorothy Yeager, Executive Director at OATS Transit

OATS Transit is a private, non-profit transit provider serving 87 counties in Missouri since 1971. A graduate of University of Missouri, Ms. Yeager has been with OATS Transit in various roles for more than three decades serving as its Executive Director since 2012. She is also Past President of the Missouri Public Transit Association; a State Delegate for the Community Transportation Association of America; a member of the Society for Human Resource Managers; and is also a Certified Community Transit Manager (CCTM) which is a national certification program for transit professionals. This activity in transit at both the state and national level has served OATS Transit well, making it one of the most recognized community transit systems in the nation.



Kelly Ast, Chief Regional Mobility Officer at New Growth Transit

Kelly Ast is the Regional Mobility Chief Officer of West Central Missouri Community Action Agency's, volunteer driver network, New Growth Transit. Her current work involves planning and development of mobility solutions, advocating for more rural transit support for a twenty-two-county territory in west central Missouri and in partnership with three sister agencies. In the past six years these efforts have produced a strategic plan that engaged over forty community partners, the launch of Missouri's largest volunteer transportation network and van pool program that works with large and small employers throughout Missouri.

Ast came to West Central from the Vernon County-based population health initiative Healthy Nevada, where she worked to drive innovation in rural living and health care. She led project development that addressed the social determinants of health, for youth and adult wellness. She advocated successfully for new policy that addressed tobacco regulation and the first adoption of a Prescription Drug Monitoring Network in Vernon County. She coordinated a local food gleaning project known as "Seeds of Faith", serving the local food pantry and community kitchen. Most recently, she worked to establish a multi-use facility, for the local farmers market and youth 4-H chapters. Kelly started her professional career as a business owner before embarking in community development. She and her family reside in the countryside of Vernon County Missouri, on their family farming operation.



Sheridan Garman-Neeman, Chief Operations Officer at New Growth

Sheridan is a strong leader in the rural economic development space. This is on top of her heartfelt love for rural and lifelong quest to improve life for the people she loves, in the places she loves. She now leads New Growth after several years building a partner nonprofit in the region, and being part of New Growth's founding in 2017. She brings an extensive background in planning, business, finance, and economic development to the work of leading New Growth. New Growth is a community development corporation founded to solve for the gaps in rural community and economic development. New Growth has a food systems team and is the Co-lead on the Heartland Regional Food Business Center, has a nationally acclaimed volunteer transit program, and is the administrator of the New Growth Women's Business Center. Additionally New Growth is an emerging CDFI with a microlending and credit building program.

PANEL DISCUSSION

MISSOURI'S NEED FOR A STATEWIDE ACTIVE TRANSPORTATION PLAN



Doug Hermes, Statewide Planning Coordinator at Missouri Association of Councils of Government

Doug Hermes is a professional community and regional planner with nearly 40 plus years of local, regional, and statewide planning experience. Mr. Hermes has a bachelor degree in Sociology and History from Emporia State University (Kansas) and a graduate degree in urban and regional planning from the University of Iowa. He was the past Planning & Zoning Administrator for Saline County, Kansas, and Director of Community Development for the City of Liberty, Missouri. For 23 years he has served as the statewide planning coordinator for the Missouri Association of Councils of Government (MACOG).



Jollyn Tyryfter, Assistant Extension Professor at University of Missouri

Jollyn Tyryfter is an Assistant Extension Professor with the University of Missouri's department of Public Health where she guides a statewide network of specialists to develop policy, systems, and environmental changes to improve nutrition and physical activity for Missouri's residents. After completing her Master of Public Health degree at Loyola University in 2015, she joined Purdue Extension's Nutrition Education Program as a Community Wellness Coordinator before coming to Mizzou. Focusing on long-term, sustainable changes in limited-resource communities, she has worked with a variety of community stakeholders and championed several new initiatives related to improving food security, healthy food access, and active transportation opportunities.



Matt Messina, Chief of Multimodal Transportation at Kansas Department of Transportation

Matt Messina is a 2015 graduate of Arizona State University with degrees in Urban and Environmental Planning where he focused his studies on transportation infrastructure's impacts on the communities they serve. He began his career with KDOT in 2016 as the state's Bicycle & Pedestrian Coordinator which continued his passion to improve systems for affordable forms of transportation and for the most vulnerable of road users. In this role, he began working on the first Pedestrians & Cyclists chapter of the 2020-2024 Kansas Strategic Highway Safety Plan and the 2023 Kansas Active Transportation Plan, the state's first since 1995. Currently, Matt serves as the Bureau Chief of Multimodal Transportation which administers the state's programs and initiatives related to Active Transportation, Public Transit, Freight and Passenger Rail, and Electric Vehicle Infrastructure and other Alternative-Fuels.



Michael Kelley, Policy Director at BikeWalkKC

Michael serves as the policy director for BikeWalkKC in Kansas City, Missouri. In that role, he leads the organization's efforts to advocate for the policies, plans, and projects that make it safer and easier for people to walk, roll, bike, and use public transit across the bi-state Kansas City region and beyond. As part of the leadership team within Missourians for Responsible Transportation, he helped to develop a model Complete Streets policy that has been used to craft some of the strongest policies of their kind in the country. Outside of BikeWalkKC, Michael serves as the vice chair for the Kansas City Regional Transit Alliance.

ORGANIZATION TABLING & NETWORKING



TERRACE ROOM,
5:15 PM-6:00 PM

We encourage you to take advantage of this networking opportunity and chance to learn more about various organizations across Missouri. Visit the Terrace Room anytime between 5:15 - 6:00 PM on Thursday!



THURSDAY EVENING ACTIVITIES

While there are no set events Thursday evening, we hope you will take this opportunity to explore all Columbia has to offer! You really can't go wrong exploring any of our downtown businesses, but the following are some of our local favorites! Plus, if you present your lanyard at the businesses below, you will receive a discount!

• **Gunter Hans** - visit this bar for some authentic European pretzels

• **Lakota** - located in the heart of the United States, this coffee shop has been a staple for 30+ years in CoMo

• **Broadway Brewery** - local brewery with great drinks and a stellar open-air atmosphere

Reminder: If you are staying at the Broadway Hotel, checkout is Friday, April 18th at 11 AM.

Breakfast will be served in the Rooftop Ballroom from 8–9 AM. If you check out from the hotel before the day begins, you can store your luggage in the Terrace Room. Designated attendants will keep the room locked throughout the day.

If you need access to your luggage before summit checkout (12:30 PM), text **573-999-9894** to meet a volunteer to unlock the room for you.



FRIDAY

→ FRIDAY, APRIL 18

	ROOFTOP BALLROOM (SKYLINE)	ROOFTOP BALLROOM (VISTA)	TERRACE ROOM
8:00 - 9:00	Breakfast: Buffet (Pastries, Fruit, Eggs, Sausage, Potatoes)		
9:00 - 10:00	Small Table Discussion		
10:15 - 11:00	Community Geography and the Black Experience in Columbia, Missouri: Housing, Transportation, and Displacement , Rikki Ascani & Aída Guhlincozzi	Advocacy in a Post Twitter World , Walter Jenkins	Bikeable Columbia: Exploring the City on Two Wheels (Bike Fleet Mobile Tour)
11:00 - 11:30	Snack: Seasonal Vegetable Display & Brie en Croute		
11:30 - 12:15	SafeAcross – A Free Plug-and-Play Pedestrian Safety Initiative that Makes a Difference , Mandy Buettgen-Quinn	Missouri Mobility Management Initiative , Ed Thomas	
12:30 - 2:30	Boxed To-Go Lunch: Sandwich*, Chips, Apple, Cookie <i>*First-come, First-served Options: Club, Chicken Salad, Grilled Vegetable Flatbread</i>		

→ FRIDAY, 10:15-11:00 AM, BALLROOM SKYLINE

COMMUNITY GEOGRAPHY AND THE BLACK EXPERIENCE IN COLUMBIA, MISSOURI: HOUSING, TRANSPORTATION, AND DISPLACEMENT

Aída Guhlincozzi, *Assistant Professor of Geography and Women's and Gender Studies at the University of Missouri &*

Rikki Ascani, *Community Engagement Director of Local Motion*

Urban renewal and transportation infrastructure projects have historically led to the displacement and marginalization of Black communities across the United States. While these effects have been well-documented in major cities, there is a significant gap in research on how these processes have shaped the Black community in Columbia, Missouri.

This project utilizes community geography praxis to examine the intersection of place, institutional racism, and forced displacement under the guise of urban renewal and increased connectivity. By employing historical mapping and conducting interviews with Black Columbia residents, this research uncovers how housing and transportation development policies have systematically impacted the community. The co-production of knowledge with local Black residents aligns with community geography's goal of amplifying historically marginalized voices and shedding light on societal injustices. Additionally, this work contributes first-hand historical knowledge to existing research on housing and transportation, offering a deeper understanding of how these policies have shaped Black life in Columbia. Through this research, I aim to challenge dominant narratives of progress and infrastructure development by centering the lived experiences of those most affected.





→ FRIDAY, 10:15-11:00 AM, BALLROOM VISTA

ADVOCACY IN A POST TWITTER WORLD

Walter Jenkins, *Data Storyteller at Geostack Solutions*

Since the implosion and extremification of communities online it has been never been so easy difficult and scary trying to engage with the public particularly online. While there is not a great single way to get the word out being able to find and engage with existing private communities is a great way to build your coalition. This presentation will walk through different methods I have done to tell stories online and tell the story of STL Urbanists and how they got people outside to advocate IRL.



→ FRIDAY, 11:30 AM-12:15 PM, BALLROOM SKYLINE

SAFEACROSS – A FREE PLUG-AND-PLAY PEDESTRIAN SAFETY INITIATIVE THAT MAKES A DIFFERENCE

Mandy Buettgen-Quinn, *Engineer 1 of City of Springfield*

Based on the award-winning SGF Yields campaign, SafeAcross is a comprehensive pedestrian safety program that can measurably increase driver compliance at crosswalks through education, engagement engineering, enforcement and policy. Recognized as a noteworthy practice of the Safe System Approach by the Federal Highway Administration, other communities can become a SafeAcross host community free of charge.



→ FRIDAY, 11:30 AM-12:15 PM, BALLROOM VISTA

MISSOURI MOBILITY MANAGEMENT INITIATIVE

Ed Thomas, *Executive Director of Camden County Developmental Disability Resources*

A mobility management program can serve as one of many potential solutions to Missouri’s current transportation crisis. It can be the central component to achieving more and better transportation services. Mobility management is an innovative approach for managing and delivering coordinated transportation services to customers, including older adults, people with disabilities, and individuals with lower incomes. Mobility management focuses on meeting individual customer needs through a wide range of transportation options and service providers.

MOBILE TOUR

Bikeable Columbia: Exploring the City on Two Wheels

→ TERRACE ROOM,
10:15 AM-12:15 PM

In 2018, Columbia was named one of the “Best Bike Cities in America” in Bicycling magazine, ranking 46th out of more than 100+ cities considered for the category. This mobile tour will give attendees the experience of the bike infrastructure the City has implemented to better connect the community living east of downtown to the central area. This tour (~7 miles) will provide the opportunity to bike along the interconnected networks of bike boulevards, multi-use paved trails, and protected bike paths, stopping to talk about the key bike infrastructure wins Columbia has had to make this all possible.

We recommend this tour for cyclists who feel confident riding on streets (at times with mixed traffic) and in a group setting. Local Motion will have **14 bikes** for participants to use. We will give these out on a first come, first served basis. Helmets will not be provided.

*** 7 MILES**

POLICIES

Summit Anti-Harassment, Discrimination, and Respectful Conduct Policy

At the Moving Missouri Forward Summit, we are committed to creating an environment where all participants feel respected, valued, and safe. We expect every attendee, speaker, sponsor, and volunteer to contribute to a positive, inclusive experience for all.

Respect is fundamental to our community. It requires empathy, intentional listening, and thoughtful responses to others. Everyone deserves to be addressed how they choose to be identified, including their names and pronouns.

We adhere to all anti-discrimination laws and uphold standards protecting individuals from harassment and bias. Offensive behavior, discriminatory comments, and oppressive language will not be tolerated.

Zero-Tolerance Policy - We will not tolerate:

- Threatening, abusive, or demeaning language, including profanity and expressions that others perceive as intimidating, hostile, or offensive.
- Bullying, harassment, hazing, or collusion.
- Threats of violence, litigation, financial harm, or other intimidating conduct.
- Racial, ethnic, gender-based, or cultural slurs; expressions of bias against any individual or group based on identity or characteristics.
- Derogatory jokes, teasing, name-calling, or making someone the target of pranks.
- Epithets, slurs, or negative stereotyping.
- Sharing, displaying, or distributing offensive, defamatory, or threatening materials, including electronic content.
- Unwanted or inappropriate physical contact.
- Retaliation against individuals who report concerns or violations.

Reporting and Enforcement: If you experience or witness any behavior that violates this policy, please report it to the Local Motion team immediately. We take all reports seriously and will take care of them promptly and confidentially.

Violations may result in removal from the summit without a refund, prohibition from future events, or other appropriate actions.

We aim to ensure that Moving Missouri Forward is an event where all individuals can fully participate and engage without fear of discrimination, harassment, or hostility. We appreciate your commitment to fostering a respectful and inclusive environment.

