

Lankayan

Island
Resort

Lankayan



About

Lankayan Island, a tiny jewel in the Sulu Sea north of Sandakan, is part of a Marine Protected Area.

This unpopulated paradise, covered in tropical vegetation, features elegant seafront chalets and pristine white sandy beaches. Ideal for tranquility seekers and families, it's also a top diving destination with colorful macro fauna, fascinating wrecks, and seasonal whale sharks.

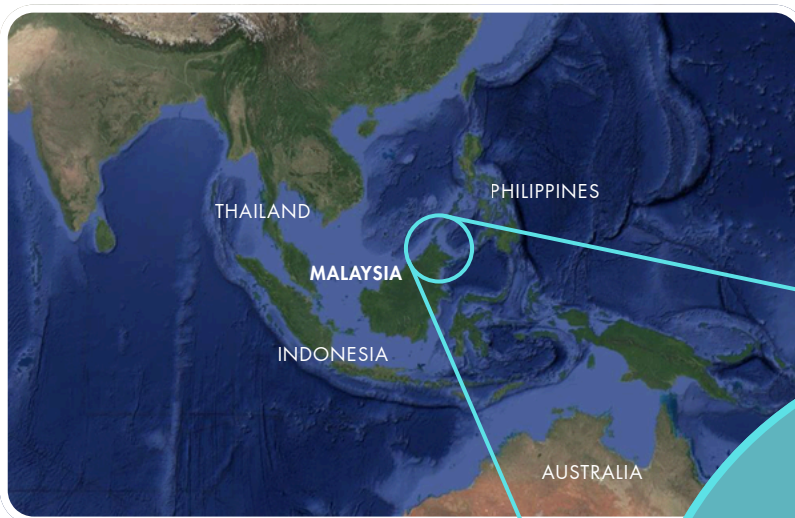
As part of the Sea Turtle Corridor, it offers opportunities to witness turtle nesting and hatchling releases, particularly from June to September.



Lankayan

Getting here

Getting to Lankayan is easier than it seems. Fly into Sandakan Airport in Sabah, East Malaysia (accessible via daily domestic flights from Kuala Lumpur or Kota Kinabalu). Upon arrival, we'll greet you and handle all ground and boat transfers. The boat ride will take about 2 hours.



The boat departs from Sandakan PSR Jetty to Lankayan at 10:00 am (once daily only). Please book flight that arrive Sandakan at 09:00am.

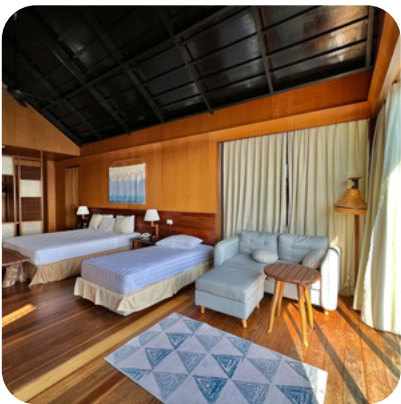
For your return, the boat departs from Lankayan Island to Sandakan PSR Jetty at 07:00 am (once daily only). Please book flight that departs Sandakan after 11:00am.



Lankayan



Rooms



Lankayan

Rooms



Despite the remoteness we are proud to offer all the amenities of a tropical island resort. Visitors have a choice to stay in chalets twin or triple sharing basis. Made out of local wooden materials to blend into the natural surroundings, chalets rooms are attached with private balcony overlooking the white sandy beach and turquoise colored ocean.

Lankayan chalets are well appointed and equipped with hot bath, coffee and tea making facilities, mini refrigerator and fresh water from mainland. Power is available with 220 V or 110 V. All chalets offer direct access to the beach which is in fact just at your front door step.



Lankayan



Activities

Lankayan Island offers a range of exciting activities for visitors. Snorkeling and scuba diving are among the top attractions, with crystal-clear waters teeming with vibrant coral reefs and diverse marine life, including sea turtles and reef sharks. Non-divers at the resort receive a complimentary one-day snorkelling trip to nearby Sun Bar by boat.

For those who prefer to stay above water, kayaking around the island's picturesque coastline provides stunning views and a chance to explore hidden coves.

A visit to the Reef Guardian Centre is a must, where you can learn about marine conservation efforts and the island's initiatives to protect its delicate ecosystem.





Reef Guardian Center

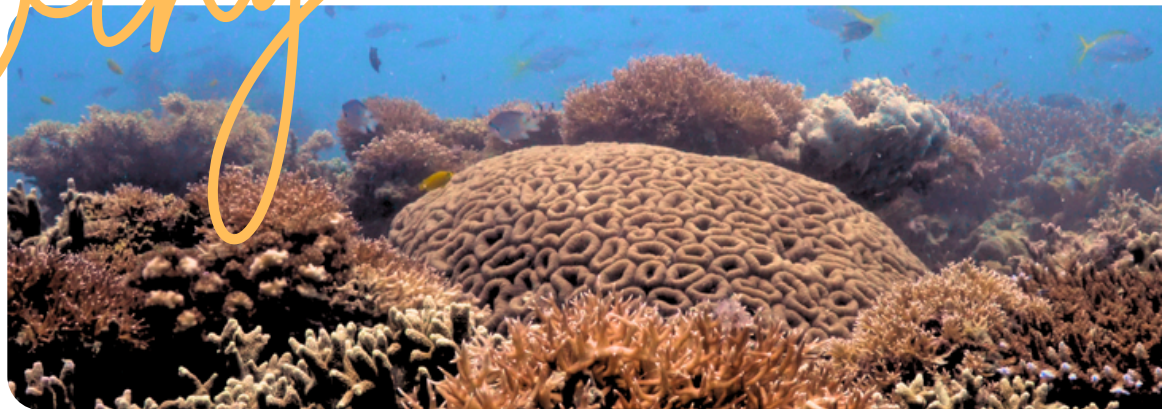
Established in 2007, the Reef Guardian Centre on Lankayan Island has received numerous awards for its marine conservation efforts. The center collaborates closely with local authorities and enforcement agencies to protect coral reefs and endangered species. Their initiatives include research, education, and community engagement to preserve the island's unique marine ecosystem.

At the Reef Guardian Centre, guests can engage in a range of marine conservation activities. Educational programs and interactive workshops provide insights into coral reef ecology and the significance of marine conservation efforts. Guests can assist in sea turtle conservation projects, including monitoring nests and releasing hatchlings into the ocean. There is even an option to adopt a turtle nest at RM300.00 each.



Lankayan

Diving



Lankayan Island is a macro diving paradise with beautiful hard and soft corals hosting numerous juvenile fishes and vibrant macro subjects. Divers can encounter large schools of yellow tail barracudas, jacks, and hump head parrotfish, as well as rays and guitarfish.

The reef is home to diverse species such as juvenile fishes, clown anemone fishes, crabs, shrimps, nudibranchs, and rarer finds like jawfish, ornate ghost pipefish, and frogfish. Notable sites include the “Lankayan Wreck,” a fish poaching vessel turned thriving underwater habitat.

If you are not a certified diver but would like to dip your feet into the realm of scuba diving, you can take up a scuba diving course or Discover Scuba Diving with our in-house scuba instructors.



L a n k a y a n

Fishing



Experience the ultimate fishing getaway in Lankayan with our exclusive fishing package, conducted at a special fishing area. Enjoy leisure fishing in a special area where you can catch a variety of fish.

After your successful day on the water, our talented resort chef will prepare a delicious meal featuring your catch. Great for both experienced anglers and beginners alike.

RM800.00 per boat (max 12pax) for 2.5hours.





Facilities

Meals are informally served at the central open building, featuring a beautiful open-air wooden terrace, ideal for after-dinner relaxation and chatting while admiring juvenile black tip sharks swimming nearby.

Guests can use the TV room to view the day's dive footage, and internet access is available daily from 0800hrs to 2300hrs. The resort also has a souvenir shop selling postcards, T-shirts, film, batteries, and toiletries. Additionally, rental equipment for diving, snorkeling, and ocean kayaking is available at the dive centre.

Lankayan



The Eastern Sabah Security Command (ESSCOM) plays a vital role in safeguarding islands like Lankayan. Established in 2013, ESSCOM ensures the security of Sabah's east coast, including its popular tourist destinations.

By coordinating efforts between various security agencies, ESSCOM protects against threats such as piracy and terrorism. Its presence reassures tourists and locals alike, enabling the safe enjoyment of the region's natural beauty. ESSCOM also collaborates with local communities to enhance maritime security and conducts regular patrols and surveillance, making islands like Lankayan safer for visitors and contributing to the overall stability of the area.

Security



Travel in Style

ARRIVE AT Lankayan BY
HELICOPTER

***TWO ROUTES
AVAILABLE:***

Kota Kinabalu - Lankayan Island
Sandakan - Lankayan Island

Glamorous arrival



Travel to Lankayan via Helicopter

Skip the two hour speedboat commute to Lankayan Island and embark on a thrilling voyage aboard the Bell 206 L3 helicopter.

With a max speed of 140 knots and a range of 374 miles, this versatile chopper seats up to 6 passengers, ensuring a swift and comfortable journey. Start your adventure even before arriving at your tropical paradise holiday destination!



FROM KOTA KINABALU

- **MYR 38,800**
- **DURATION: ABOUT 2 HOURS**
- **CAPACITY: 6 PAX**



FROM SANDAKAN

- **MYR 19.888**
- **DURATION: ABOUT 1 HOUR**
- **CAPACITY: 6 PAX**



After your hotel pickup, you will be transported to the helicopter departure point. Your chopper ride will include breathtaking views of rural Sabah and lush rainforests.



Don't forget to pack a cap and sunnies if you're riding shotgun in front with the Captain, as the panoramic view from there also means that it can get quite sunny there!



Rates

BEACH CHALETs

NON MALAYSIAN DIVER PACKAGE



Rates are quoted in Malaysian Ringgit (MYR)

NIGHTS	DIVER RATE	8% SST	WITH SST	SIMCA FEE**	TOTAL PER PAX
2	3,396.25	271.70	3,667.95	130.00	3,797.95
3	4,759.95	380.80	5,140.75	195.00	5,335.75
4	6,123.70	489.90	6,613.60	260.00	6,873.60
5	7,487.40	598.99	8,086.42	325.00	8,411.42
EXTRA NIGHT	1,363.70	109.10	1,472.80	65.00	1,537.80

- *Minimum qualification requirement: PADI OPEN WATER certified or equivalent*
- ***Sugud Islands Marine Conservation Area (SIMCA). More info: [SIMCA](#)*
- *All rates, terms & conditions quoted below are valid from 1st SEPT 2025 to 30th JUNE 2026.*



Rates

WATER CHALET S

NON MALAYSIAN DIVER PACKAGE



Rates are quoted in Malaysian Ringgit (MYR)

NIGHTS	DIVER RATE	8% SST	WITH SST	SIMCA FEE**	TOTAL PER PAX
2	3,705.57	296.45	4,002.02	130.00.	4,132.02
3	5,223.95	417.92	5,641.87	195.00	5,836.87
4	6,742.34	539.38	7,281.72	260.00	7,541.72
5	8,260.72	660.85	8,921.58	325.00	9,246.58
EXTRA NIGHT	1,518.38	121.47	1,639.85	65.00	1,704.85

- *Minimum qualification requirement: PADI OPEN WATER certified or equivalent*
- ***Sugud Islands Marine Conservation Area (SIMCA). More info: [SIMCA](#)*
- *All rates, terms & conditions quoted below are valid from 1st SEPT 2025 to 30th JUNE 2026.*



BEACH CHALET S

NON MALAYSIAN NON DIVER PACKAGE

Rates are quoted in Malaysian Ringgit (MYR)

NIGHTS	NONDIVER RATE	8% SST	WITH SST	SIMCA FEE**	TOTAL PER PAX
2	2,790.15	223.21	3,013.36	130.00	3,143.36
3	3,704.52	296.36	4,000.88	195.00	4,195.88
4	4,618.90	369.51	4,988.41	260.00	5,248.41
5	5,533.27	442.66	5,975.93	325.00	6,300.93
EXTRA NIGHT	914.37	73.15	987.52	65.00	1,052.52

- ****Sugud Islands Marine Conservation Area (SIMCA). More info: [SIMCA](#).**
- **All rates, terms & conditions quoted below are valid from 1st SEPT 2025 to 30th JUNE 2026.**



WATER CHALET S

NON MALAYSIAN NON DIVER PACKAGE

Rates are quoted in Malaysian Ringgit (MYR)

NIGHTS	NONDIVER RATE	8% SST	WITH SST	SIMCA FEE**	TOTAL PER PAX
2	3,099.47	247.95	3,347.42	130.00	3,477.42
3	4,168.50	333.48	4,501.98	195.00	4,696.98
4	5,237.54	419.00	5,656.54	260.00	5,916.54
5	6,306.57	504.52	6,811.10	325.00	7,136.10
EXTRA NIGHT	1,069.03	85.52	1,154.55	65.00	1,219.55

- ****Sugud Islands Marine Conservation Area (SIMCA). More info: [SIMCA](#)**
- **All rates, terms & conditions quoted below are valid from 1st SEPT 2025 to 30th JUNE 2026.**



Peak Season Rates

BEACH CHALETs

NON-MALAYSIAN DIVER PACKAGE



Rates are quoted in Malaysian Ringgit (MYR)

NIGHTS	DIVER RATE	8% SST	WITH SST	SIMCA FEE**	TOTAL PER PAX
2	3,565.00	285.20	3,850.20	130.00	3,980.20
3	4,996.00	399.68	5,395.68	195.00	5,590.68
4	6,429.00	514.32	6,943.32	260.00	7,203.32
5	7,861.00	628.88	8,489.88	325.00	8,814.88
EXTRA NIGHT	1,431.00	114.48	1,545.48	65.00	1,610.48

- Minimum qualification requirement: *PADI OPEN WATER* certified or equivalent
- **Sugud Islands Marine Conservation Area (SIMCA). More info: [SIMCA](#)
- All rates, terms & conditions quoted below are valid from 1st JULY 2026 to 31st AUGUST 2026



Peak Season Rates

WATER CHALET S

NON MALAYSIAN DIVER PACKAGE



Rates are quoted in Malaysian Ringgit (MYR)

NIGHTS	DIVER RATE	8% SST	WITH SST	SIMCA FEE**	TOTAL PER PAX
2	3,890.00	311.20	4,201.20	130.00.	4,331.20
3	5,484.00	438.72	5,922.72	195.00	6117.72
4	7,079.00	566.32	7,645.32	260.00	7,905.32
5	8,673.00	693.84	9,366.84	325.00	9,691.84
EXTRA NIGHT	1,593.00	127.44	1,720.44	65.00	1,785.44

- Minimum qualification requirement: PADI OPEN WATER certified or equivalent
- **Sugud Islands Marine Conservation Area (SIMCA). More info: [SIMCA](#)
- All rates, terms & conditions quoted below are valid from 1st JULY 2026 to 31st AUGUST 2026



Peak Season Rates

BEACH CHALET S

NON MALAYSIAN, NON DIVER PACKAGE

Rates are quoted in Malaysian Ringgit (MYR)

NIGHTS	NONDIVER RATE	8% SST	WITH SST	SIMCA FEE**	TOTAL PER PAX
2	2,929.00	234.32	3,163.32	130.00	3,293.32
3	3,889.00	311.12	4,200.12	195.00	4,395.12
4	4,848.00	387.84	5,235.84	260.00	5,495.84
5	5,809.00	464.72	6,273.72	325.00	6,598.72
EXTRA NIGHT	959.00	76.72	1,035.72	65.00	1,100.72

- ****Sugud Islands Marine Conservation Area (SIMCA).** More info: [SIMCA](#).
- All rates, terms & conditions quoted below are valid from 1st JULY 2026 to 31st AUGUST 2026



Peak Season Rates

WATER CHALET S

NON MALAYSIAN, NON DIVER PACKAGE

Rates are quoted in Malaysian Ringgit (MYR)

NIGHTS	NONDIVER RATE	8% SST	WITH SST	SIMCA FEE**	TOTAL PER PAX
2	3,253.00	260.24	3,513.24	130.00	3,643.24
3	4,376.00	350.08	4,726.08	195.00	4,921.08
4	5,498.00	439.84	5,937.84	260.00	6,197.84
5	6,621.00	529.68	7,150.68	325.00	7,475.68
EXTRA NIGHT	1,122.00	89.76	1,211.76	65.00	1,276.76

- ****Sugud Islands Marine Conservation Area (SIMCA). More info: [SIMCA](#)**
- **All rates, terms & conditions quoted below are valid from 1st JULY 2026 to 31st AUGUST 2026**



Public Holiday Surcharge

RM100.00 per pax

DATE	HOLIDAY
1 MAY	LABOUR DAY
30 MAY	TYT'S BIRTHDAY
2 JUNE	AGONG'S BIRTHDAY
31 AUGUST	INDEPENDENCE DAY
16 SEPTEMBER	MALAYSIA DAY

Lankayan

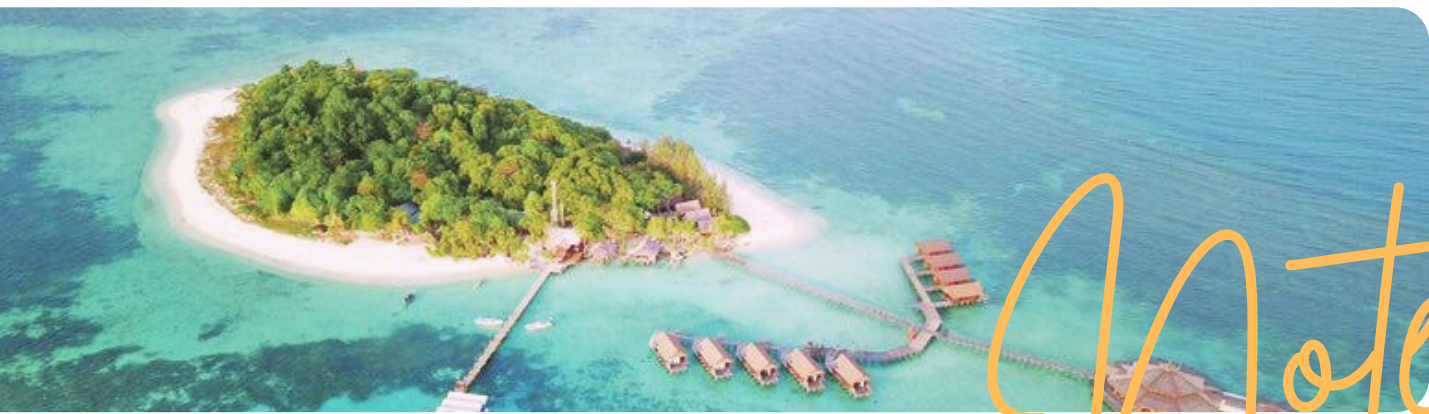


PACKAGE RATES INCLUDE:

- Transfer from hotel / Sandakan Airport (flight arrival before 09:00 am only) to Sandakan PSR Jetty and return i.e. on arrival and departure day **only**.
- Transfer by boat from Sandakan PSR Jetty to Lankayan resort and return (SIC basis).
- Accommodation at Lankayan Island Resort on twin sharing basis.
- Fresh Meals – breakfast/lunch/dinner.
- Afternoon snacks – served at the restaurant daily.
- Tea / coffee, cold water and cordial – served throughout the day at the restaurant daily.
- Snorkel around the resort – from the shore or Lankayan Dive Centre.
- Service Tax 8%.
- SIMCA Conservation Fee.

For diver package only:

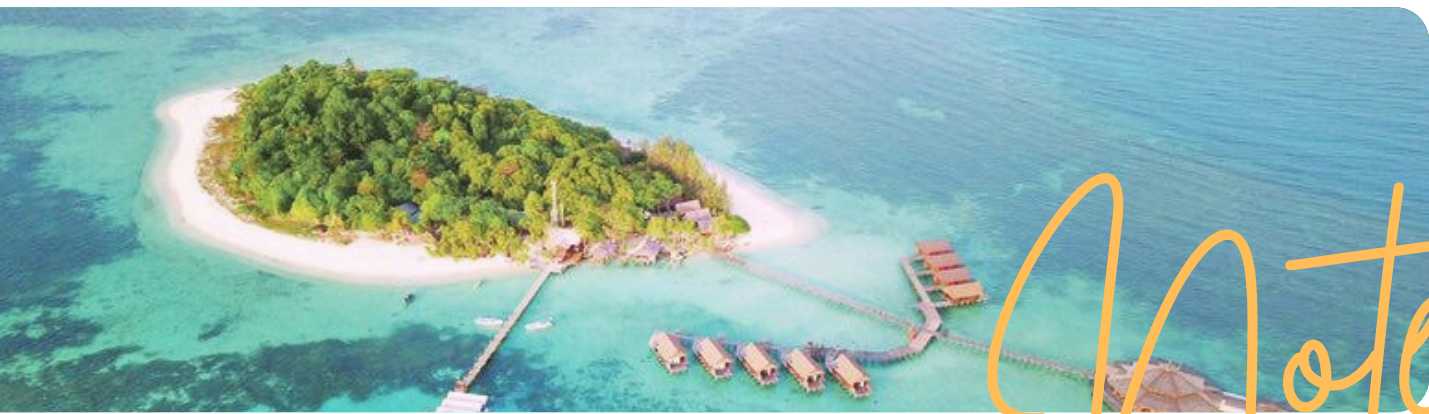
- 3 guided boat dives daily – except on arrival & departure day.
- Tank, weights and weight belt are provided.
- Unlimited house reef dives in front of Lankayan Dive Centre. Unlimited house reef dives and night dives are unguided dive and must be accompanied by buddy.



Notes:

- All prices quoted above are in Ringgit Malaysia (RM) and EXCLUDES of TTX (Tourism Tax) – RM 10.00 per room per night (payable to the Royal Malaysian Customs Department) implemented since 1st Sept 2017.
- Allocation of room is based on RUN OF HOUSE (ROH) basis. (Choosing of room-by-room number will not be entertained).
- The Water Chalet accommodates up to 3 adults, Beach Chalet accommodates up to 4 adults.
- 5% off from the package rate for sharing 3 adults in a chalet.
- 50% off from the Non-Dive Package (ND) rate for non-diver child from 2 to below 12 yrs.
- Infant 24 months and below is chargeable at RM300.00 per person excludes SIMCA and SST 8%.
- Single/Solo traveler is subjected to Single Supplement for OWN CHALET with NO SHARING option (Single supplement rate: additional 30% from the above package rate)
- Group Travel Option – ONE (1) pax FREE for every NINE (9) paying pax (ALL MUST ADULT) (Subjected to same arrival and departure flight and time, FOC pax subjected to SIMCA FEE and SST)
- Junior Diver (Child Diver) rate is based on Diver Package (D) rate.
- Combining Diver Package (D) and Non-Diver Package (ND) is not allowed (divers have to decide between Diver package (D) OR Non-Diver package (ND) throughout their stay).
- To purchase Diver Package (D), one must be a certified/licensed diver.
- All diving courses must be arranged and paid directly at the resort.
- No dive allowed within 24 hours prior to departure flight time.
- No pregnant women are allowed by boat to Lankayan Resort.

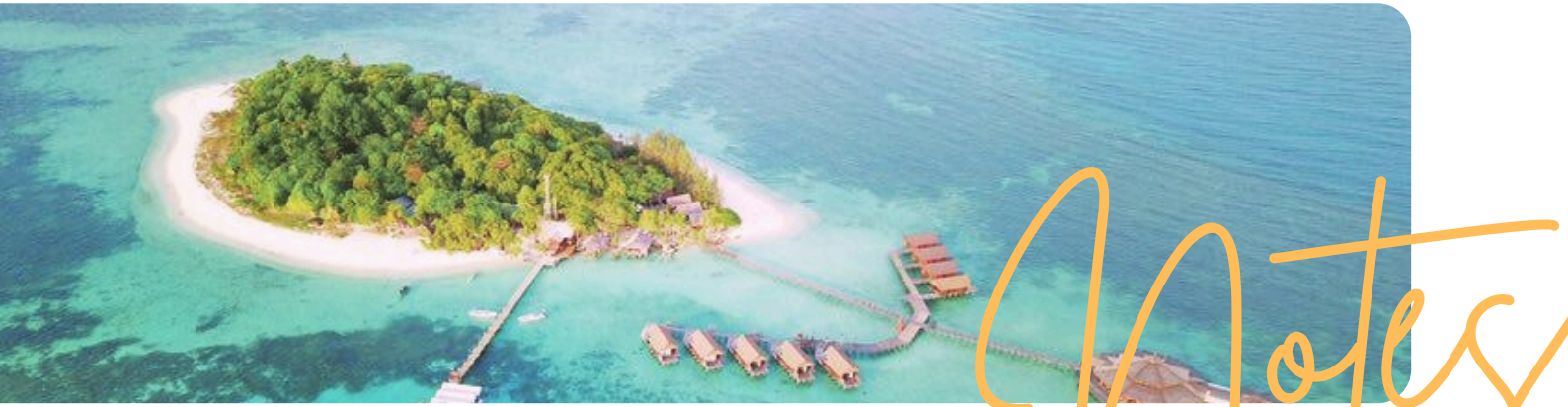
Lankayan



- Diver guest is encouraged to bring along their own equipment otherwise opt for rental from Lankayan Dive Centre.
- Snorkelling by boat is NOT available.
- WiFi is only available in the restaurant area.
- Honeymoon/Simple decoration (setting on arrival day only) in the chalet is chargeable at RM180.00 per setting (excludes SST 8%).
- OPTIONAL on last day - RM200.00 per pax (includes SST 8%) inclusive of lunch at SNL Restaurant and transfer-out (SNL-APT). Sepilok Tour is on guest own arrangement.
- Lankayan Island Dive Resort is closed annually during January and February due to the onset of the monsoon season.
- Equipment rental rate (including SST 8%):

ITEM	RM	ITEM	RM
BCD	42.00 / DAY	FINS	15.00 / DAY
REGULATOR, GAUGE, OCTOPUS	42.00 / DAY	BOOTIES	13.00 / DAY
MASK	19.00 / DAY	KAYAK (TRANSPARENT)	60.00 / HOUR
SNORKEL	9.00 / DAY	KAYAK	38.00 / HOUR
WETSUIT	35.00 / DAY		

Lankayan



Boat Schedules(Fixed and once daily only)

- Depart from Sandakan PSR Jetty: 10:00 am (once daily only). Please book flight that arrive Sandakan at 09:00am.
- Depart from Lankayan Island to Sandakan PSR Jetty: 07:00 am (once daily only). Please book flight that departs Sandakan after 1100hrs

**Additional fee will be charged for unscheduled transfers. Subject to boat availability and sea condition.*

Insurance

We recommend that if you intend to go scuba diving, make sure you have an insurance policy that covers this activity. We strongly recommend that all guest stake out adequate travel insurance covers accident, loss caused by cancellations, loss of luggage, personal property, medical expenses, medical evacuation and weather disruption / cancellations (including activity cancellations). Guests intending on participating in diving activities must ensure their insurance covers them for scuba related activities and has appropriate 'depth ' coverage.

Check-In/Check-Out Time

Check-In Time into Chalet: 13:00 pm

Check-Out Time from Chalet: 06:00 am

Meals and Timing

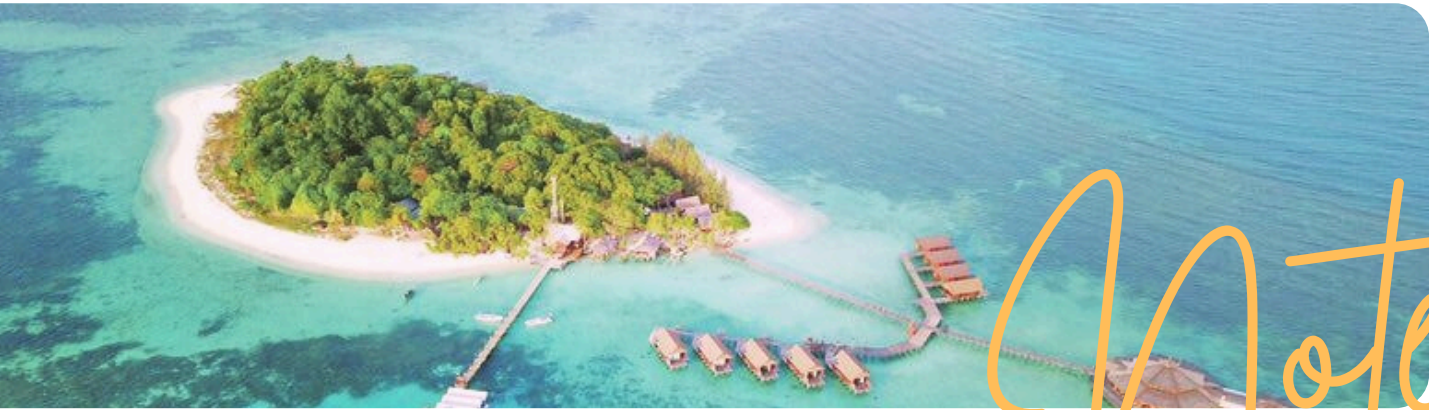
Breakfast: 06:20 am to 10:30 am

Lunch: 13:00 pm to 14:30 pm

Dinner: 19:00 pm to 20:30 pm

Note: Strictly no outside food and drinks allowed into the resort

Lankayan



Notes

Information needed to block the room/confirm reservation

Full name 1:

Passport Number:

Nationality:

Gender (M/F):

Date of Birth (DOB):

Diver (D)/Non-Diver (ND) package:

Full name 2:

Passport Number:

Nationality:

Gender (M/F):

Date of Birth (DOB):

Diver (D)/Non-Diver (ND) package:

(For more than 2 guests to Lankayan, please continue the list)



Please ensure to read and understand the Terms & Conditions below before proceeding with reservation and booking.

Reservation/Deposit/Full payment

Reservation

- Reservation should be made through Lankayan Island Dive Resort (LIR) and appointed travel agents' office. Advance reservations by email are preferred.
- Booking Request Standard Deadline (cooling-off period): Upon inquiry, subjected to room availability, room will be held for 3 working days only. Should there be NO RECONFIRMATION within the given period; the temporary held room will be released by our booking system automatically without further notification to you.
- Once booking has been confirmed, a non-refundable deposit will be required to block the room. 30 days to arrival date where full payment should be made to finalized the booking.

Deposit (Non-Refundable)

- A non-refundable deposit of 30% per guest (inclusive of 8% SST) is required to secure the room reservation.

Full Payment (Final Payment)

- The final payment must be made 60 days prior to the departure date. If payment is not received by the deadline, LIR will not be held responsible for any cancellation of the reservation. Failure to complete the full payment will result in the booking being cancelled, and the deposit paid will not be refunded.
- Bookings within thirty (30) days: For reservations made within the final payment date of your vacation (in most cases, within 30 days of departure and subjected to availability of accommodation), FULL PAYMENT is required at time of booking.



Terms & Conditions

Minimum requirement, Accompanying Children and Infants

Minimum requirement

2 persons (pax) at least Single traveler – subjected to single supplement surcharge of additional 30% to the package price.

Accompanying Children:

Travelers below 12 years old on the departure date must be accompanied by an adult throughout the vacation and are requested to share an adult's accommodation. To receive the young traveler's discount, the traveler must qualify at commencement of services.

Pricing Guide:

3 Adults in a chalet – 5% discount each on the package price

1 Adult + 1 Child in a chalet (Based on 2 Adults Rate)

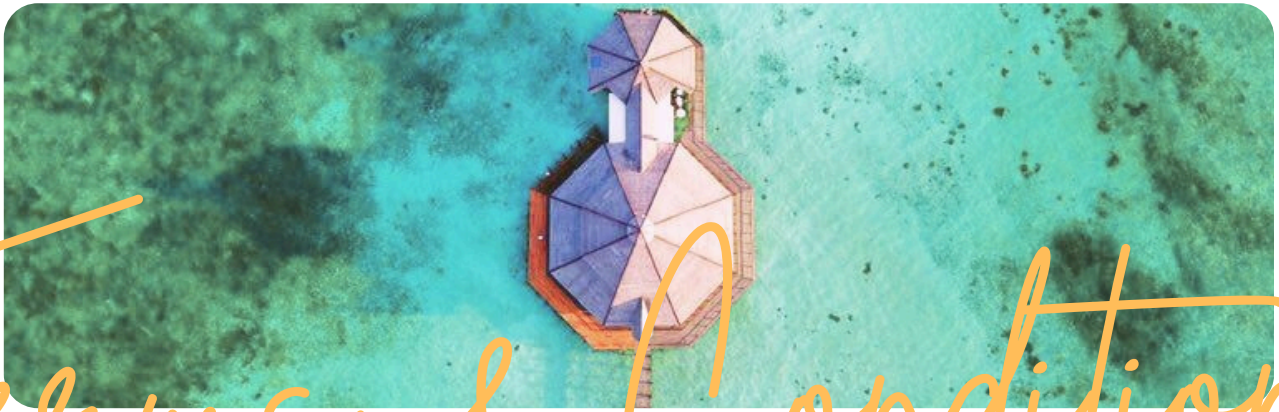
Junior Diver is under Diver Package

Adult age applies from 12 yrs old onward

Child (2 to 11 yrs old) – 50% of Non-Dive Package

Infant:

24 months and below is chargeable at RM300.00 per person excludes SIMCA and SST 8%.



Terms & Conditions

Package Prices

Package prices are in Ringgit MALAYSIA and exclude airfare, snorkel or dive gear hire, beverages, laundry, room service and others not specified or mentioned in the tour itinerary or brochures. Package price is per person, based on double occupancy (two people sharing a room). Single room supplement and triple reductions or pricing guides are mentioned above. Prices are subjected to change without prior notice.

Divers Certification and Equipment

Only certified divers may participate in scuba diving activities, unless they are enrolled in a scuba training program and under the direct supervision of their certified Instructor. Guests need to produce their certification card prior to diving. Failure to produce certification card / credentials may result in the guest being denied permission to scuba dive until they can prove their certification level. Certified divers' minimum requirement is PADI Open Water-recreational dive certificate or equivalent. All scuba divers must accept full and complete responsibility for themselves, their actions and their equipment. Divers may use their own gear, or to rent and use our dive equipment. (Please refer to our dive equipment rental rate).

Extension stay request

One may apply for extension of stay while at the resort but is subjected to accommodation availability.



Terms & Conditions

Participation

For the benefit of everyone at the resorts, LIR reserves the right to accept or reject any vacation participant and to remove any participant whose conduct is deemed incompatible with the interests of the other participants. LIR will not refund or cover any cost or expenses incurred for termination of vacation arrangements due to unacceptable behavior.

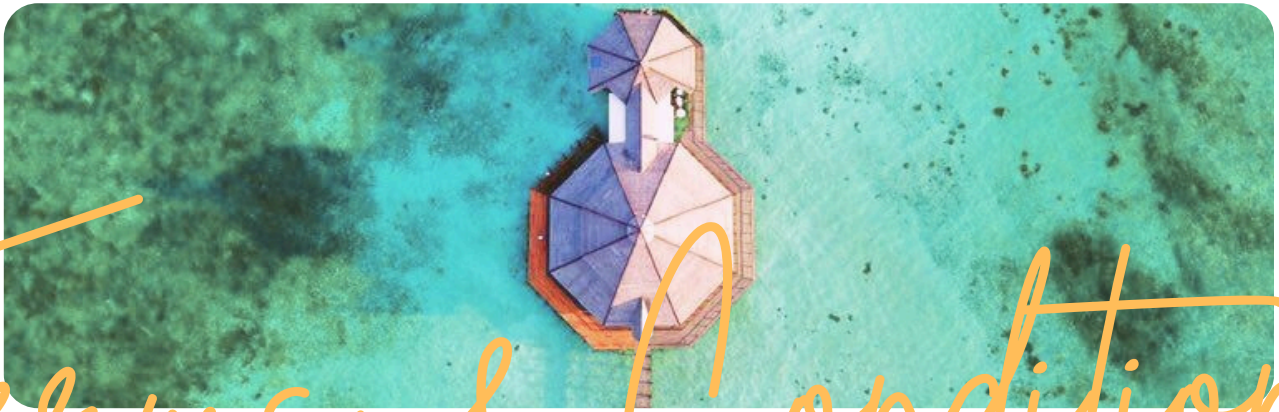
Note: Smoking is NOT allowed on transportation that is exclusively provided by LIR. Smoking is restricted to certain areas at the resorts. Strictly no outside Food & Drinks allowed into the Resort.

Transfer Arrangement & Fees

Package prices are inclusive of land & boat transfer on the check-in and check-out day only. Additional fee will be charged for unscheduled transfers. RM3,000.00 per way excludes SST 8% (subject to change).

Travellers Who Need Special Assistance

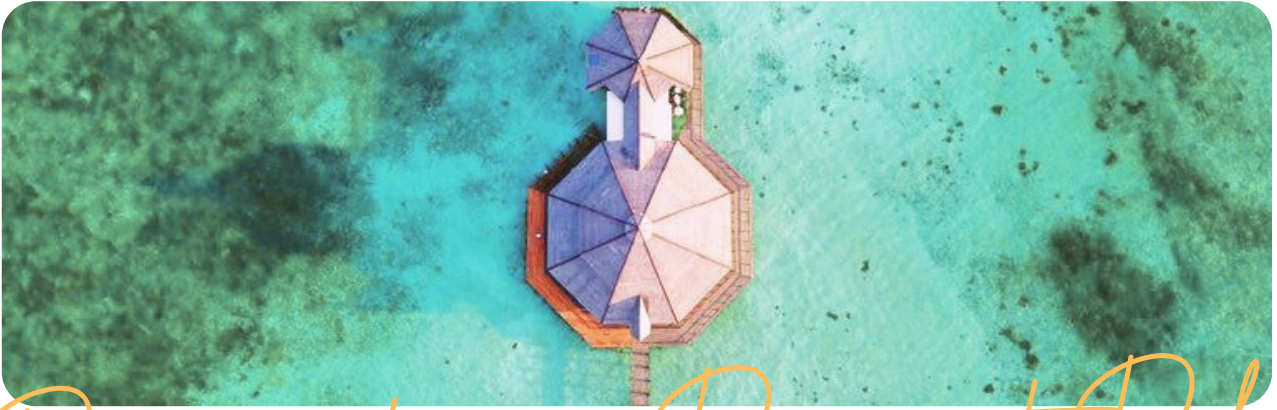
You must advise any disability requiring special attention at the time the reservation is made. LIR will do their best to accommodate the special needs request, but is not responsible in the event it is unable to do so nor responsible for any denial of services by, hotels, restaurants, or other independent suppliers. LIR cannot provide individual assistance to a vacation participant for walking, dining, getting on and off motor coaches, passenger boat and other vehicles, or other personal needs. LIR strongly recommends a qualified and physically able companion must accompany travelers who need such assistance. All travelers with LIR are subjected to the Participation Clause listed in the terms & conditions above.



Terms & Conditions

General Disclaimer & Force Majeure:

- **Unforeseen Circumstances (Force Majeure):** The Company and the Resort shall not be held liable for any delay, cancellation, additional expense, or inconvenience caused directly or indirectly by events outside of our control. This includes, but is not limited to, late arrival of flights, civil disturbance, unusually severe weather, rough and dangerous sea conditions, acts of God, or government actions. In such events, the Resort reserves the right to cancel or delay boat departures for safety reasons without any obligation for a refund.
- **Unused Services & Health Conditions:** After the commencement of the service, strictly no refund (in part or in full) will be made for any unused services or activities due to the traveler's voluntary modification, free choice, or ill health. For instance, if a guest fails to complete a dive or aborts a booked package due to personal health issues (e.g., inability to equalize), they will still be fully charged for the package.
- **Travel Insurance:** We strongly recommend that all guests purchase comprehensive travel insurance prior to the trip. This insurance should adequately cover accidents, medical expenses, personal property loss, and weather-related disruptions or activity cancellations. Guests are advised to claim any financial losses incurred from the aforementioned unforeseeable circumstances directly through their respective insurance providers.



Reservation & Payment Policy

Reservation & Payment Policy:

- A non-refundable deposit of 30% of the total invoice amount is required to secure your reservation at the time of booking.
- Full balance payment must be made strictly sixty (60) days prior to the departure date. For reservations made within 60 days of the departure date, 100% full payment is required immediately at the time of booking.
- All payments must be settled within 14 days from the date of invoice issuance. Failure to receive the required payment by the stated deadline will result in automatic cancellation of the reservation, and any deposit paid will be forfeited entirely.

Cancellation & Refund Policy:

- All deposits paid are strictly non-refundable under any circumstances.
- For cancellations made more than 60 days prior to the departure date, the maximum refundable amount shall not exceed 50% of the total invoice amount.
- For cancellations made between 31 and 60 days prior to the departure date, the maximum refundable amount shall not exceed 25% of the total invoice amount.
- For cancellations made 30 days or less prior to the departure date, strictly NO refunds will be issued (100% cancellation fee applies).
- Notwithstanding the above, the Company reserves the ultimate right to make the final decision regarding any refund requests. Otherwise, the strict non-refundable principal shall always prevail.

looking forward to
seeing you here!

