

Straight Connector

Introduction

AirWave® **Straight Connector** for quick and easy splicing of micro ducts, the body is transparent for easy fault location during Installation. To enable cable blowing, the connector is designed to operate at 15 bars without leakage The Push-fit straight connectors manufactured with high quality materials and transparent body assure easy and quick installation, connector can be re-used 10 times remaining maintained the high-performance requirements for air- blown installation systems.

Application:

The straight connectors for microducts provide a quick, easy and secure connection of microducts, used to join sections of microducts

Features

- Used for jointing two micro ducts.
- Straight connector installation is simple and carried out in a few seconds.
- Easy “push-in” installation
- Size (mm): For 3 to 22 mm O.D. microducts
- Material: Clear PC
- Leakage Pressure: 15 bar
- Negative Pressure: 750mm Hg
- Proof Pressure: 25 bar
- Temperature Range: -10 ~60°C



Connector Cover

Introduction

AirWave® **Connector Cover** is typically used in place of a duct closure to protect the connector and the end cap for direct burial.

Features

- Connector protection to withstand external impact and crush.
- Lock Pin function to prevent tube escape.
- Prevention from the inflow of sand and mud into the connector groove.
- Easy to install and remove.
- Used for Direct burial, manhole (hand hole), in-building.
- Used for end cap protection as well.
- Material : Polypropylene



End Caps

Introduction

AirWave® **End Caps** is used for quick and easy tighten the ends of unused primary tube.

Provides water resistance and mud resistance. It is also used in combination with the valve end stop connector during installation of micro ducts into existing cable ducts.

Application:

The end cap for permanent or temporarily sealing of unused microducts to prevent obstacles such as water, mud, dust and so on.

Features

The End Cap are tested for best functionality in combination with the air blown fibers unit and air blown fibers cables.

- Easy “push-in” installation
- For 3 to 22 mm O.D. microducts
- Material: Clear PC
- Leakage Pressure: 15 bar
- Negative Pressure: 750mm Hg
- Proof Pressure: 25 bar
- Temperature Range: -10 ~60°C



Reducers

Introduction

AirWave® **Microduct Reducer connectors** for quick and easy splicing of microducts allows interconnection between microducts that are difference in outer diameters, the body is transparent for easy fault location during Installation, to enable cable blowing, the Reducer connector is designed to operate at 15 bars without leakage. The Push-fit reducer connectors manufactured with high quality materials and transparent body assure easy and quick installation, connector can be re-used 10 times remaining maintained the high-performance requirements for air- blown installation systems.

Application:

The Reducer allows interconnection between microducts that are difference in outer diameters. Usually, this is used in the point of transition from DB to DI microducts entering the office, house.

Features

The reducer connectors are tested for best functionality in combination with the air blown fibers unit and air blown fibers cables.

- Easy “push-in” installation
- For 3 to 22 mm O.D. microducts
- Material: Clear PC
- Leakage Pressure: 15 bar
- Negative Pressure: 750mm Hg
- Proof Pressure: 25 bar
- Temperature Range: -10 ~60°C



Gas Block

Introduction

AirWave® **Gas Block** is used when there is a need to block gas to pass freely into different micro-duct sections. This could for example be necessary when changing from outdoor to indoor installations.

Application:

The Gas block connector works in a similar way as the standard connector when joining micro ducts but has a compressible rubber gasket that is sealed after the cable has been installed.

Features

- Easy “push-in” installation
- For 3 to 22 mm O.D. microducts
- Material: Clear PC
- Leakage Pressure: 15 bar
- Temperature Range: -10 ~60°C



Water Block

Introduction

AirWave® **Water Block** is used when for entering underground external plant.
A simple push fit device provides a water tight seal for tubes (unpopulated) and tubes with installed.

Application:

The water block connector works in a similar way as the standard connector when jointing micro ducts but has a compressible rubber gasket that is sealed after the cable has been installed.

Features

- Easy “push-in” installation
- For 3 to 22 mm O.D. microducts
- Material: Clear PC
- Leakage Pressure: 15 bar
- Temperature Range: -10 ~60°C



DB Direct Buried Connector

Introduction

AirWave® **DB Direct Buried Connector** is used at the end point of direct buried thick walled microduct to prevent from the potential obstacles such as dust, water and so on.

Application:

The DB Direct Buried straight connectors and end cap for permanent with the same functionality as conventional connectors or endcaps, installation simply involves pushing the microduct into the end.



Features

The DB Direct Buried straight connectors and end cap are tested for best functionality in combination with the air blown fibers unit and air blown fibers cables.

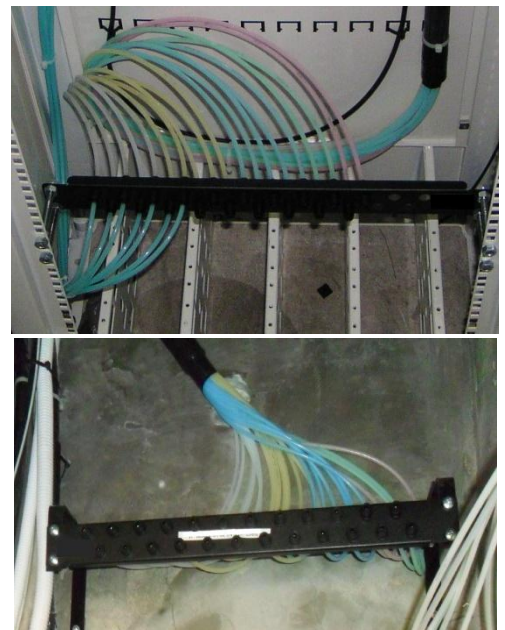
- Material: HDPE
- Leakage Pressure: 15 bar
- Negative Pressure: -750mm
- Proof Pressure: 25 bar
- Temperature Range: -10 ~60°C
- Burst Pressure: > 25.5kg
- Water Immersion test: Pass (Water proof)
- Expected Life time: Minimum 20 years

Microduct Patch Panel

Introduction

19" Rack mount 1U
24 ports for diameter 5mm Microduct

- Micro duct Cable Organizer
- Max. 24 ports and good for Microduct branch.



Ordering Information

Product Code	Description
LN-AW-FOCT-SC-5	Straight connector ,5mm tube
LN-AW-FOCT-SC-7	Straight connector ,7mm tube
LN-AW-FOCT-SC-8	Straight connector ,8mm tube
LN-AW-FOCT-SC-10	Straight connector ,10mm tube
LN-AW-FOCT-SC-12	Straight connector ,12mm tube
LN-AW-FOCT-SC-14	Straight connector ,14mm tube
LN-AW-FOCT-SC-16	Straight connector ,16mm tube
LN-AW-FOCT-SC-20	Straight connector ,20mm tube
LN-AW-FOCT-SC-22	Straight connector ,22mm tube
LN-AW-FOCT-EC-5	End Cab connector ,5mm tube
LN-AW-FOCT-EC-7	End Cab connector ,7mm tube
LN-AW-FOCT-EC-8	End Cab connector ,8mm tube
LN-AW-FOCT-EC-10	End Cab connector ,10mm tube
LN-AW-FOCT-EC-12	End Cab connector ,12mm tube
LN-AW-FOCT-EC-14	End Cab connector ,14mm tube
LN-AW-FOCT-EC-16	End Cab connector ,16mm tube
LN-AW-FOCT-EC-20	End Cab connector ,20mm tube
LN-AW-FOCT-EC-22	End Cab connector ,22mm tube
LN-AW-FOCT-GB-5	Gas Block connector ,5mm tube
LN-AW-FOCT-GB -7	Gas Block connector ,7mm tube
LN-AW-FOCT-GB -8	Gas Block connector ,8mm tube
LN-AW-FOCT-GB -10	Gas Block connector ,10mm tube
LN-AW-FOCT-GB-12	Gas Block connector ,12mm tube
LN-AW-FOCT-GB-14	Gas Block connector ,14mm tube
LN-AW-FOCT-GB-16	Gas Block connector ,16mm tube
LN-AW-FOCT-GB-20	Gas Block connector ,20mm tube
LN-AW-FOCT-GB-22	Gas Block connector ,22mm tube
LN-AW-FOCT-WB-5	Water Block connector ,5mm tube
LN-AW-FOCT-WB -7	Water Block connector ,7mm tube
LN-AW-FOCT-WB -8	Water Block connector ,8mm tube
LN-AW-FOCT-WB -10	Water Block connector ,10mm tube
LN-AW-FOCT-WB-12	Water Block connector ,12mm tube
LN-AW-FOCT-WB-14	Water Block connector ,14mm tube
LN-AW-FOCT-WB-16	Water Block connector ,16mm tube
LN-AW-FOCT-WB-20	Water Block connector ,20mm tube
LN-AW-FOCT-WB-22	Water Block connector ,22mm tube
LN-AW-FOCT-R-7/5	Reducer connector ,7mm-5mm tube
LN-AW-FOCT-R-10/8	Reducer connector ,10mm-8mm tube
LN-AW-FOCT-R-12/10	Reducer connector ,12mm-10mm tube
LN-AW-FOCT-R-14/12	Reducer connector ,14mm-12mm tube
LN-AW-FOCT-R-16/14	Reducer connector ,16mm-14mm tube
LN-AW-FOCT-R-20/16	Reducer connector ,20mm-16mm tube
LN-AW-PP-5-24P	Patch Panel 19" Rack mount 1U, 5mm Microduct 24 ports

Notice: The data in this document are only reference and will be changed without any notice.
This specification is intended as a guide only.