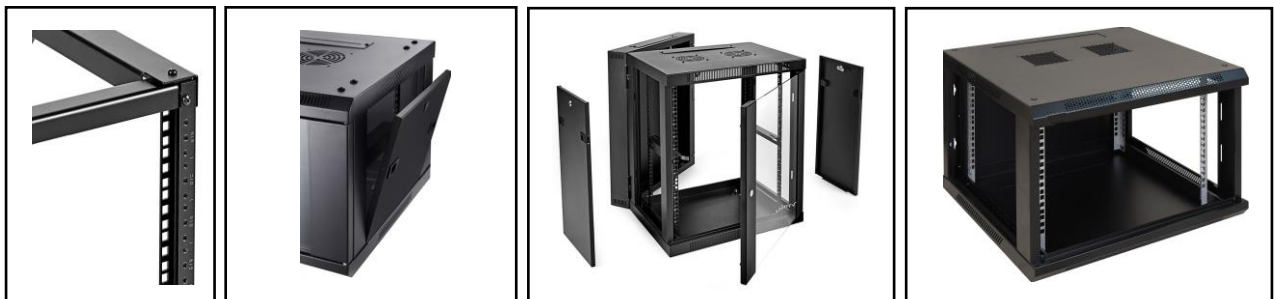


Wall Cabinet, which can be fastened directly to the wall through different installation methods. It is widely used in the construction of intelligent community, wiring room with small space, corridor, and such communication or networking environment with small quantity of installation equipment. Due to features such as small size, easy installation and removal, easy management and security, wall cabinet are widely used to provide adaptable environment and safety for electronic equipment working. The wall mounted cabinet easily produced, assembled, debugged, packed and shipped.



## Application



Wall mounted cabinet standard is between 4U-22U, width and depth are both 450mm or 600mm and width is 600mm. Wall cabinet is widely applied in small network system, computer network system, university education equipment, radio system and communication system etc., suitable for precision computer and electronics instrument etc.

The wall cabinet series possesses an elegant design which reflects the rock's ability to manage network and accessories.

## Main Material

All is made of high-quality SPCC Cold Rolled Steel

### Thickness:

frame: 1.2mm

Square-hole post: 1.0mm

Side door: 1.0mm

Shelf board: 1.0mm

Tempered glass: 4.0mm or vented door

**Color:** RAL 9004 (black) or RAL7035 (grey)



## Feature

### Surface finish:

The rack includes a powder coating surface finish which ensures it remains grease and corrosion free. The surface finish complies with relevant ROHS requirements.

### Appearance:

Removable left and right side and front door, front door come with tempered glass or vented. Elegant design, exquisite craftsmanship, precision size, make your project looks nice.

### Standard:

Comply with ANSI/EIA RS-310-D, IEC60297-2, DIN41494 PART 1 and DIN41494 PART 7  
IP rating: IP30 or IP42

### Cabling:

The rack possesses several adjustable cable routings channels within the top and bottom of the rack.

### Stable and durable:

Frame is totally completed of high-performance welding, with good stiffness and strength, the maximum loading is 60kgs. Anti-vibration, shockproof, anti-corrosion, dustproof, waterproof, anti-radiation protection and other properties in order to ensure equipment work stably and reliably.

### Ventilation:

The server rack includes a perforated and curved Front door, which can be easily removed when required.

\* Rack's size (width\*depth) can be customized according to customer's requirements.

## Product Standard Configuration

S/N	Specification	Qty	Material	Surface Finish	Remark
1	Front door	1	SPCC t1.2	Powder coated	See front door type
2	Side panel	2	SPCC t1.0	Powder coated	
3	Frame	1	SPCC t1.2	Powder coated	
4	Mounting profile	1	SPCC t1.2	Powder coated	
5	Back panel	1	SPCC t1.0	Powder coated	
6	19 " rails	4	SPCC t1.2	Powder coated	
A	M6 screw & nuts	10/20	Steel	Zinc plated	20pcs for over 15U
B	Trox Tooling	1	Steel	Zinc plated	----

## Front and Rear Door



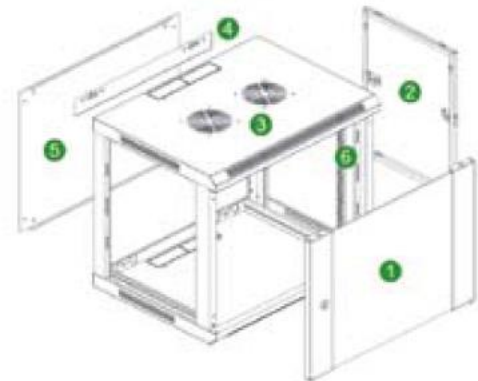
### Front Door

- Tempered glass door with striped hole
- Small lock/Long-handled lock
- Reversible right- or left-handed doors
- Turning angle is over 180 degrees
- Material: Sheet steel and 4MM safety glass
- Surface Finish: Powder coated

### Front Door

- High-density vented door, slotted surface
- Small lock/Long-handled lock
- Reversible right- or left-handed doors
- Turning angle is over 180 degrees
- Material: Sheet steel
- Surface Finish: Powder coated

## Structure Diagram



## Fitting Accessories



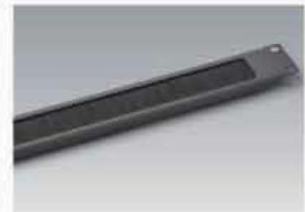
Threading hole with brush



Circular threading hole (φ50MM)



Cantilever shelf



Cable management



Cooling fan



Blanking panel

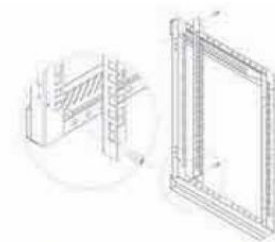


Cantilever shelf

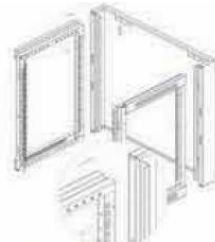


cable management

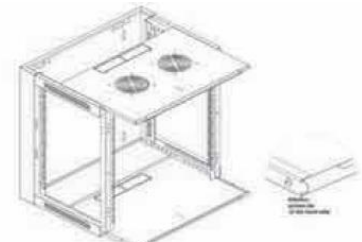
## Assembling Diagram



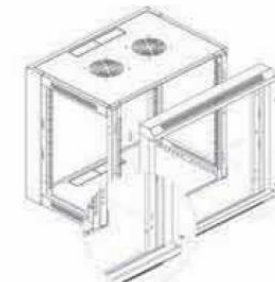
Fix 19" mounting rails to the first holes of top & bottom of side frames by 4sets of M5\*10 screws.



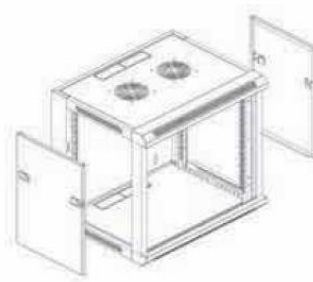
Install side frames to the grooves of back frame by 4pcs of M6\*12 screws.



Install top and bottom as shown by the arrow in the picture.



Install front frame by 4pcs of M6\*12 screws (6pcs of M6\*12 screws if more than 18U).

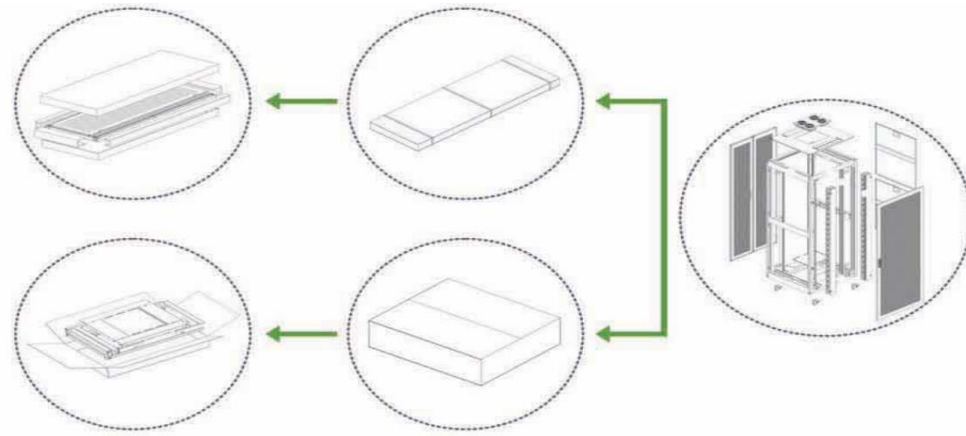


Install side panels.



Install front door.

## Packing Diagram



## Ordering Information

Product Code	Description
LN-DW-6U-WMx-645	Wall mount cabinet 6U 19" single section 600*450
LN-DW-6U-WMx-66	Wall mount cabinet 6U 19" single section 600*600
LN-DW-9U-WMx-645	Wall mount cabinet 9U 19" single section 600*450
LN-DW-9U-WMx-66	Wall mount cabinet 9U 19" single section 600*600
LN-DW-9U-WMx-66-D	Wall mount cabinet 9U 19" double section 600*600
LN-DW-12U-WMx-645	Wall mount cabinet 12U 19" single section 600*450
LN-DW-12U-WMx-66	Wall mount cabinet 12U 19" single section 600*600
LN-DW-12U-WMx-66-D	Wall mount cabinet 12U 19" double section 600*600
LN-DW-15U-WMx-645	Wall mount cabinet 15U 19" single section 600*450
LN-DW-15U-WMx-66	Wall mount cabinet 15U 19" single section 600*600
LN-DW-15U-WMx-66-D	Wall mount cabinet 15U 19" double section 600*600
LN-DW-18U-WMx-645	Wall mount cabinet 18U 19" single section 600*450
LN-DW-18U-WMx-66	Wall mount cabinet 18U 19" single section 600*600
LN-DW-18U-WMx-66-D	Wall mount cabinet 18U 19" double section 600*600
LN-DW-22U-WMx-645	Wall mount cabinet 22U 19" single section 600*450
LN-DW-22U-WMx-66	Wall mount cabinet 22U 19" single section 600*600
LN-DW-22U-WMx-66-D	Wall mount cabinet 22U 19" double section 600*600

**\* Note:**

x=G for the Tempered glass door  
 x=V for the Vented door

**Notice:** The data in this document are only reference and will be changed without any notice.  
 This specification is intended as a guide only.