



[Explore our Profile](#) ➔

| ABOUT US

Exploring & Advancing Bio-science

Relicom Biotech is a next-generation global supplier of green and bio-based chemical ingredients designed for industries transitioning toward sustainable operations. We are based in Ahmedabad, India and we specialize in nature-derived solutions that deliver performance, safety, and environmental responsibility without compromise.

Our portfolio spans insect-derived, plant-derived, and fermentation-derived chemicals serving pharmaceutical, nutraceutical, cosmetic, agriculture, feed, food processing, and industrial coating sectors across domestic and international markets.

"Relicom Biotech empowers global industries to adopt sustainable solutions without compromise, bridging the gap between nature and performance with scalable, innovative and reliable alternatives."



Pioneering Sustainable
Chemistry for Global Industries.



Our Purpose

To deliver safe, traceable, bio-based and performance-oriented ingredients to the businesses committed to health, safety, and sustainability, while supporting ESG-aligned reliable sourcing, responsible manufacturing practices, and measurable reduction of environmental impact across the value chain.



Our Mission

To accelerate world's transition toward the adoption of sustainable, bio-based, performance-driven chemical solutions by building a structured, most reliable platform and delivering true value through trusted partnerships, technical expertise, and responsible sourcing.



Our Vision

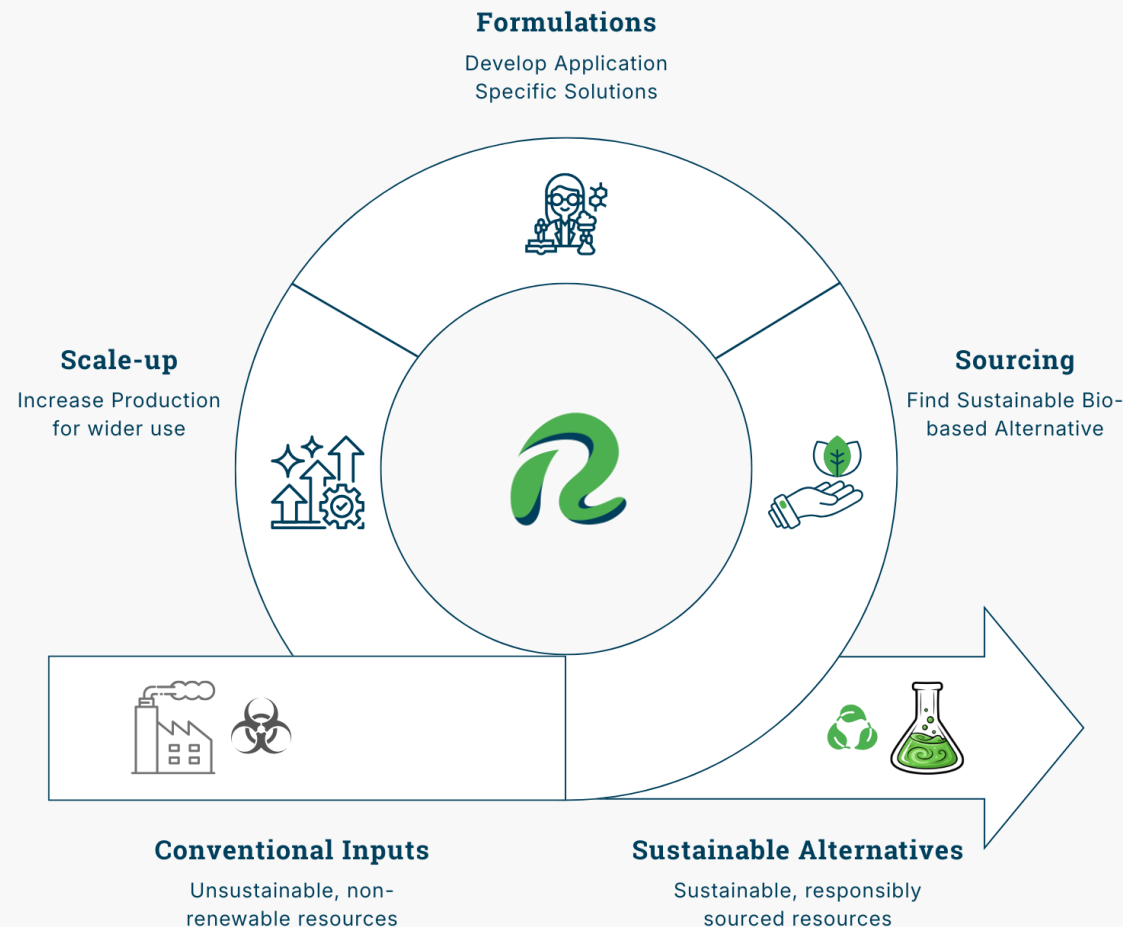
To become a key player in India's green chemical sector by leading transition to bio-based chemicals and build a global benchmark for sustainable, scalable, eco-conscious industrial solutions.

WHAT WE DO

RELICOM BIOTECH focuses on sourcing, formulation, and scale-up of sustainable, bio-based ingredients and chemicals for nutraceutical, biotechnology, and specialty chemical applications. We help customers replace conventional inputs with renewable and responsibly sourced alternatives, without compromising quality, consistency, or performance.

Our collaborative model includes toll manufacturing, contract formulation, distribution, and technical sourcing of **fermentation-based products**, **insect-derived bio ingredients**, and **Plant based chemicals**. We deliver application-specific solutions with strong regulatory compliance, traceability, and supply reliability, while supporting ESG goals through responsible sourcing, circular economy practices, and reduced environmental impact. Our business model is intrinsically aligned with the UN Sustainable Development Goals (SDGs).

WE ARE A BIO-BASED CHEMICAL COMPANY COMMITTED TO THE CIRCULAR ECONOMY AND CARBON NEUTRALITY.



| INSECT-DERIVED BIO-PRODUCTS



- ✓ Animal Feed Proteins
- ✓ Insect Lipids & Oils

- ✓ Chitin & Chitosan derivatives
- ✓ Bio-fertilizer

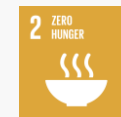
Relicom Biotech supplies insect-derived bio-ingredients as a resource-efficient alternative to conventional animal and petro-based inputs. These products are sourced through qualified partners operating controlled production systems designed for consistency, safety, and traceability.

Insect-derived materials enable high conversion efficiency, reduced land and water use, and alignment with circular economy principles, particularly where agricultural by-products can be valorised.

Insect-derived products offer customers:

- ✓ Lower-carbon input alternatives
- ✓ Improved resource efficiency
- ✓ Compatibility with ESG and sustainability objectives
- ✓ Reliable supply without compromising regulatory or quality expectations

ALIGNED UN SDGS:



PLANT-DERIVED CHEMICALS



- ✓ CNSL and Cardanol derivatives
- ✓ Castor oil-based Oleochemicals

- ✓ Plant-derived metabolites, proteins and phytochemicals
- ✓ Soy-derived lecithin

Relicom Biotech's plant-derived portfolio is built on diversified renewable feedstocks, supplying bio-based chemicals and functional ingredients for industrial, food, feed, and life science applications.

Our focus is on performance-aligned substitution, enabling customers to transition away from fossil-based materials while maintaining technical, safety, and compliance standards.

Plant-derived solutions enable:

- ✓ Fossil-input replacement without performance loss
- ✓ Compatibility with regulated industries
- ✓ Support for circular and renewable material strategies
- ✓ Long-term supply reliability through diversified sourcing

ALIGNED UN SDGS:



FERMENTATION-BASED BIO-CHEMICALS



- ✓ Bio peptides and functional proteins
- ✓ Industrial and specialty enzymes
- ✓ Bio-actives through Precision Fermentation
- ✓ Metabolites for nutrition and biotech use

Relicom Biotech supplies fermentation-derived bio-products developed through controlled biological processes, offering precision, consistency, and scalability for nutraceutical, biotechnology, and specialty applications.

Fermentation enables production of high-purity, function-specific molecules that are difficult or inefficient to source through traditional chemical routes.

Fermentation-derived products provide:

- ✓ High consistency and repeatability
- ✓ Reduced environmental footprint compared to synthetic routes
- ✓ Compatibility with regulated and innovation-driven industries
- ✓ A future-ready pathway for sustainable ingredient development

ALIGNED UN SDGS:



| INDUSTRIES WE SERVE



Animal Feed & Nutrition



Pharmaceutical



Cosmetics & Nutraceuticals



Coatings & Adhesives



Agro & Food Processing



Agriculture

OUR GUIDING PRINCIPLES



Sustainability

We put the planet at the centre of every decision, creating bio-based solutions that reduce dependence on fossil resources, lower carbon footprints, and support a circular economy.



Quality

We deliver products that meet global standards of performance, safety, and consistency, ensuring our customers can rely on us for both excellence and compliance.



Integrity

We build trust through transparency, ethical trade, and responsible partnerships, ensuring that our growth benefits customers, communities, and the environment.



Innovation

We constantly explore science-driven, scalable solutions to replace conventional chemicals, making green chemistry practical and commercially viable for industries worldwide.



Reliability

We are committed to being a dependable partner by maintaining consistent supply, strong customer support, and long-term collaborations built on mutual success.

"These values are not merely aspirational; they are the codified standards by which we evaluate our decisions, partnerships, and conduct so that our customer can rely on us."

| WHAT WE CARE ABOUT



"Sustainability at Relicom is built deliberately, with responsibility guiding growth over time."

A structured approach to responsible growth

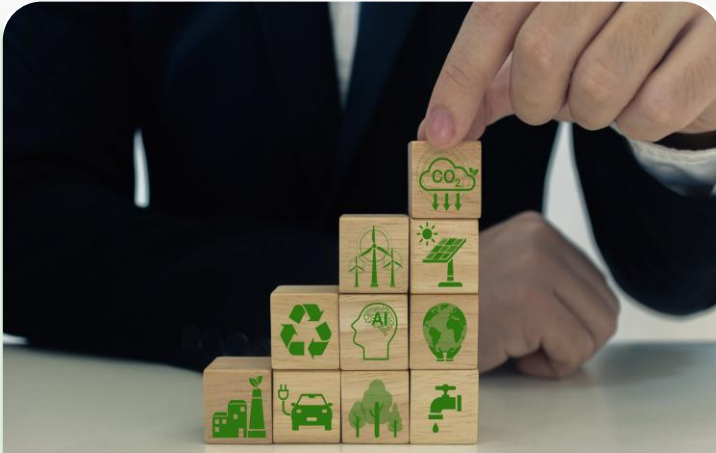
Sustainability is not a metric we chase, but a discipline we practice. We treat it as a core business responsibility, embedding careful selection into every product and supply chain decision. Our focus is on building a foundation of intent that ensures responsible growth for the long term.

We view sustainability as an evolving framework rooted in science. By prioritizing responsible chemistry and bio-based inputs, we help industries manage transition risks. Our approach is deliberate, ensuring that every operational step aligns with safety and environmental stewardship.

BUILDING A SUSTAINABLE ORGANISATION

As a young organisation, we are building our sustainability governance from the ground up. Our policies and supplier oversight mechanisms are designed to mature alongside our business, ensuring continuous improvement and scalability.

OUR ESG COMMITMENT



ENVIRONMENTAL RESPONSIBILITY

- ✓ Focus on renewable and bio-based feedstocks
- ✓ Reduced reliance on fossil-derived inputs
- ✓ Circular use & traceability of natural resources



SOCIAL RESPONSIBILITY

- ✓ Product safety and regulatory suitability
- ✓ Consistent quality for regulated industries
- ✓ Responsible sourcing and supplier conduct



GOVERNANCE & ETHICS

- ✓ Integrity-led decision making
- ✓ Transparency across supply chains
- ✓ Alignment with NGRBC and BRSR principles

OUR COMPETENCIES

Clear Focus

Specialized in sustainable chemistry, offering sharper expertise than generalist competitors.

Agility & Flexibility

Adaptive to custom formulation needs and sourcing models unlike large, slow players.

Strategic Sourcing

Direct connections with raw material sources ensuring cost advantage and traceability.

Lean Operations

Cost-efficient model combining trading, toll manufacturing, and own production.

Transparency

Honest dealing built for long-term relationships. No complexity.

Growth Vision

A clear roadmap toward circular processes and R&D for future-proofing.



Why choose Relicom?



Green at the Core

Sustainability isn't a label; it's our foundation. Every product minimizes impact.



Consistent Quality

Strict checks ensure you never second-guess performance.



Reliable & Dependable Supply

We plan and execute strategically to ensure on-time delivery, every time.



Integrity in Every Deal

Every relationship is built on trust. We operate with full transparency, fair practices, and long-term commitment.



A Partner, Not Just a Vendor

We collaborate to solve your challenges and create value together.

| Ready to Partner?

Connect with Relicom Biotech for sustainable, reliable, and performance-driven chemical solutions.

LET'S BUILD A SUSTAINABLE FUTURE TOGETHER.



Call us

(+91) 9099 223663

(+91) 9825 495055

Mon-Fri, 9am-7pm



E-mail us

info@relicombiotech.com

sales@relicombiotech.com

Response Time: 24 Hours



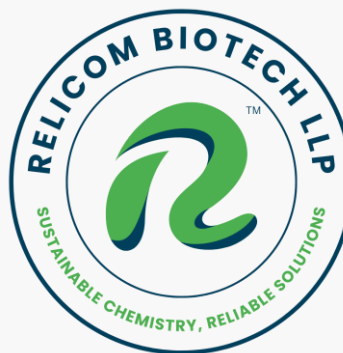
Address

501, 5th Floor, Shapath-I, SG Highway,

Ahmedabad, Gujarat, India 380054

LLPIN: ACR-9723

Follow us on



Official Website

www.relicombiotech.com

Explore our full product portfolio and more.