

# Grandsons' Premium Dairy

Address: Grandsons Premium Dairy, SHOP No. 2, HNO - 687 SECTER - B SCHEME  
NO - 136, INDORE, 452010 | Email: desk@grandsons.in | Mobile: 60014 05503

## COA REPORT

BATCHCODE: PWCM2601

PRODUCT: DESI COW GHEE

PRODUCTION DATE: 26-02-2026

QUANTITY =100 KG

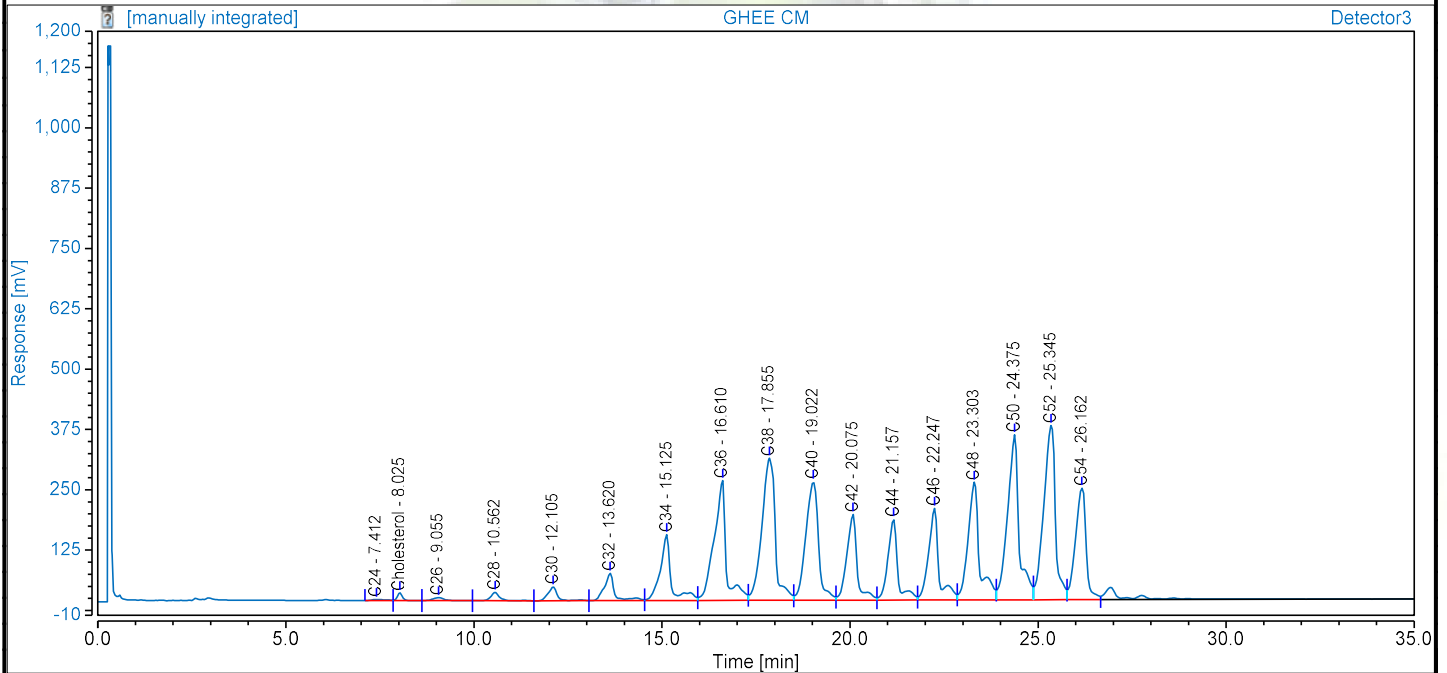
Parameters	Tested Value	Range	Results
Color	GOLDEN YELLOW		Pass
RM	26.71	26 - 35	Under Range
FFA	0.506%	< 2%	Pass
BR	41.0	40 - 44	Under Range
WRM	23.75	23 - 33	Under Range
Diff	2.96	< 3	Pass

# Milk Fat Analysis Report

Trace 1110-GC

Injection Details			
Injection Name:	GHEE CM	Run Time (min):	36.77
Vial Number:	3	Injection Volume:	0.40
Injection Type:	Unknown	Channel:	Detector3
Calibration Level:		Wavelength:	n.a.
Instrument Method:	TGA METHOD	Bandwidth:	n.a.
Processing Method:	Processing Method_Milk Fat authenticity NEW	Dilution Factor:	1.0000
Injection Date/Time:	26-Feb-26 16:28	Sample Weight:	1.0000

## Chromatogram : GHEE CM



## Integration Results

No.	Peak Name	Retention Time min	Peak Type	Area mV*min	Height mV	Rel.Height (IDF) %	Rel.Area %
1	C24	7.412	Autodetect	0.935	2.104	0.08	0.10
2	Cholesterol	8.025	Autodetect	2.568	16.152	0.58	0.26
3	C26	9.055	Autodetect	2.202	5.888	0.21	0.22
4	C28	10.562	Autodetect	4.831	17.339	0.63	0.49
5	C30	12.105	Autodetect	8.222	28.519	1.03	0.84
6	C32	13.620	Autodetect	17.747	56.378	2.04	1.81
7	C34	15.125	Autodetect	45.607	136.746	4.94	4.66
8	C36	16.610	Autodetect	93.470	248.608	8.99	9.55
9	C38	17.855	Autodetect	121.609	294.454	10.65	12.43
10	C40	19.022	Autodetect	96.531	245.922	8.89	9.86
11	C42	20.075	Autodetect	56.134	178.087	6.44	5.74
12	C44	21.157	Autodetect	50.700	167.838	6.07	5.18
13	C46	22.247	Autodetect	61.542	189.918	6.87	6.29
14	C48	23.303	Autodetect	86.657	243.722	8.81	8.85
15	C50	24.375	Autodetect	122.830	341.754	12.36	12.55
16	C52	25.345	Autodetect	130.850	361.261	13.06	13.37
17	C54	26.162	Autodetect	76.272	231.431	8.37	7.79
<b>Total:</b>		<b>0.000</b>		<b>978.704</b>	<b>2766.12</b>	<b>100.00</b>	<b>100</b>
<b>Foreign Fats</b>					<b>S Value</b>	<b>S Limit</b>	<b>Judgement</b>
Soybean, sunflower, olive, rapeseed, linseed, wheat germ, maize germ, cotton seed, fish oil					98.64	98.05-101.95	Confirms
Coconut and palm kernel					100.00	99.42-100.58	Confirms
Palm oil and beef tallow					100.22	95.90-104.10	Confirms
Lard					100.62	97.96-102.04	Confirms
<b>Total</b>					<b>99.85</b>	<b>95.68-104.32</b>	<b>Confirms</b>

Analyzed By:

Reviewed By: