

Metal Fabrication



Profile / Pre-Qualification Document

CNC Facade

Structural Design

Tensile Shades

Structural Steel

Non Structural Steel

**S A S PROFESSIONAL TECHNICAL WORKS**

Complete Metal & Tensile Shades Industry

# Preface...



**Syed Abdul Salam ( Managing Director )**

SAS Professional Technical Works – 25 Years of Excellence  
SAS Professional Technical Works began its journey 25 years ago, driven by vast experience and an unwavering ambition to succeed. From the start, we recognized the challenges ahead, but we were determined to carve our niche in the market—not through sheer size or resources, but through excellence in service and a commitment to customer satisfaction.

With a spirit of perseverance and confidence in Dubai—the modern era’s “land of opportunities”—: we focused on strengthening our position through

Transparency in our approach

Sharing knowledge and expertise while remaining open to new ideas and suggestions

Learning from mistakes gracefully and implementing timely corrective actions

Commitment throughout the project lifecycle, including post-completion support

Continuous improvement, recognizing that in the pursuit of perfection, there is always room to grow

## Our Approach

While our foundational principles remain consistent, we have evolved a working model centered on customization—tailored solutions across products, services, shade designs, and project management.

Looking back, it gives us immense pride to see the remarkable results achieved by our talented team. These accomplishments are a testament to our steadfast adherence to the principles above—principles that will continue to guide us for as long as we operate.

At SAS Professional Technical Works, we are committed to delivering highly skilled, innovative, and customer-focused solutions, ensuring excellence in every project we undertake.



Corporate





# Corporate Overview

SAS Professional Technical Works is a leading multi-faceted company specializing in innovative architectural and structural solutions across the UAE. With over 25 years of experience, we combine technical expertise, precision engineering, and creative design to deliver high-quality projects that enhance functionality, aesthetics, and brand value. "At SAS Professional Technical Works, we deliver solutions that are durable, efficient, and visually striking."

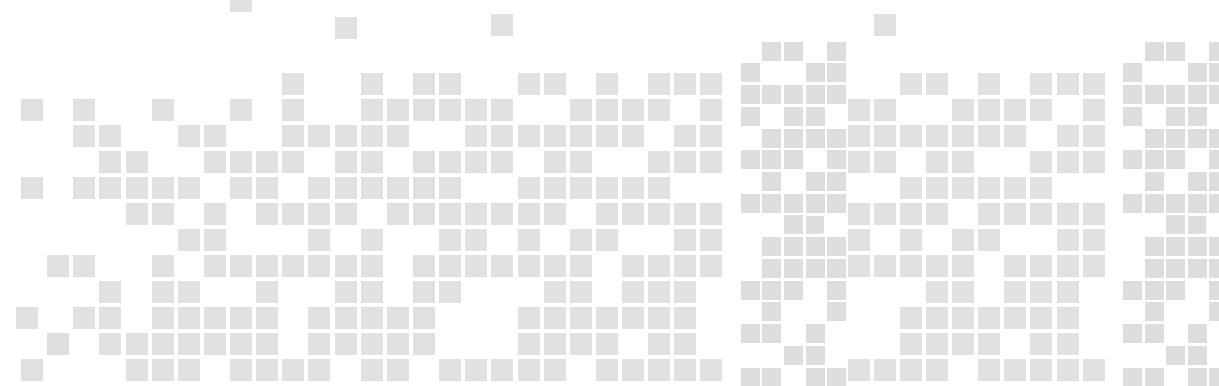
***SAS Professional Technical Works, we're focused on creating shades that you can be proud of working in..."***

Our team of certified welders, fabricators, and skilled engineers brings unmatched expertise in handling complex projects. From the initial assessment of your operational space and workflow to the final installation, we ensure every solution is tailored to meet your business needs while maintaining the highest standards of safety and quality.

With over 300 turnkey projects completed across diverse sectors and sizes ranging from 100 sq. ft. to 50,000 sq. ft., we are committed to delivering innovative, durable, and precision-engineered solutions that exceed client expectations.

We offer a comprehensive range of professional services, including:

- ❖ Structural Designing Consultancy
- ❖ Structural Steel Fabrication & Installation
- ❖ Non-Structural Steel Fabrication & Installation
- ❖ MS Hot Dip Galvanizing Process
- ❖ CNC Facades, CNC Cutting, and Installations
- ❖ Tensile Shades / HDPE / PVC / PTFE Solutions
- ❖ Car Parking Shades, Pergolas, and Customized Tents





# Corporate philosophy



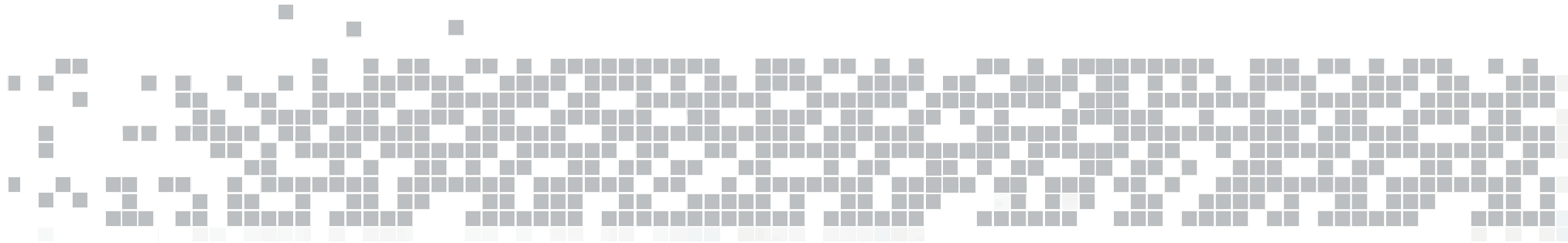
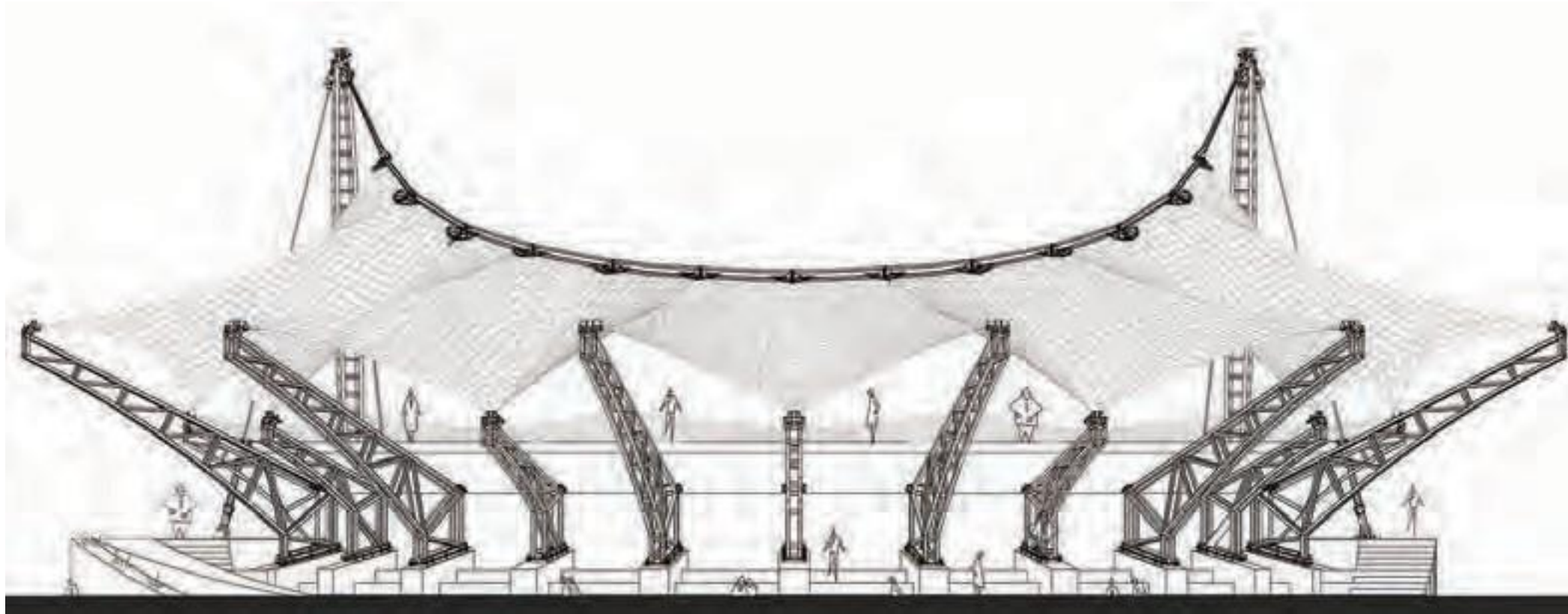
## **Our Mission**

... is to position SAS Professional Technical Works as an international, world class organization regarded as the pre-eminent service provider in tents, shades & metal fabrication of corporate companies at affordable prices. To always act with complete integrity and transparency, thereby exceeding customer expectations.

## **Our Vision**

...is to help corporate houses in the UAE and Middle East Africa in creating happier healthier and more efficient work spaces, by providing sustainable ,functional and aesthetic Tents and shades solutions.

# Our Responsibility



# SAS Professional - Responsibility

## Health and Safety:

SAS Professional understand and accept the paramount importance of health and safety of employees and all other personnel that are affected by the group's activity. Therefore Bilal Tents is determined to establish a working culture in which the positive aspects of health and safety are encouraged and developed.

In order to achieve the same, we practice a strict safety regime, inclusive of the following:

1. Providing and maintaining plant and systems of work that are safe and without risk to health.

Prompt use of hard hats, safety boots, hand-gloves, safety goggles and harnesses by all performing the relevant works.

Strictly follow the safety rules on the usage of scaffoldings, ladders, power tools, etc.

Always use fused plugs/sockets for power.

2. Ensuring safe use, handling, storage, and transport of articles and substances, and appropriate disposal of waste.

Provide and maintain adequate quantity of fire extinguishers

Proper allocation of storage space.

Non-stacking of materials beyond a height of 250 cm.

No-smoking in the offices/work-sites and site staff accommodation

Maintain general cleanliness/hygiene in the premises.

Collection and disposal of waste, in a very orderly manner.

3. Provide information, training and supervision as is necessary to achieve competency in their role.

Annual product training with respect to the brands that we represent.



Use of state-of-the art tools from internationally recognized corporate organizations.

All Sites are assigned with a foreman and a site engineer.

4. Ensure a safe working environment, with an appropriate level of welfare facilities.

Avoid fatigue by ensuring that all personnel have adequate rest, as well as recreational facilities.

Adequate assignment of personnel based on the size and difficulty level of the task to be carried out.



# SAS Professional - Responsibility

- Contd...

5. Adherence to all legal requirements related to its activity.

Qualify all site personnel with the minimum safety regulations on each zone by participating in trainings and related seminars.

6. Employees are encouraged to assist and participate in initiatives to improve their working environment and the company will ensure that training in health and safety matters is included wherever necessary.



7. Continued compliance is achieved through the use of up-to-date health and safety management systems in line with internationally accepted safety management standards. These policies will be kept up-to-date, particularly as the business changes and develops. To this end the policy and the way in which it is operated will be reviewed every year.

Furthermore, we believe that a successful health and safety culture is dependent upon effective collaboration between the company and its clients.

It must be noted that by strictly following the safety regime, we have just completed a zero incident period as on 31st December 2017



# SAS Professional - Responsibility

- Contd...

## SAS Professional EnviSPONFOU:

With the goal of advancing sustainable practices for protecting the environment and the mission to spread awareness for

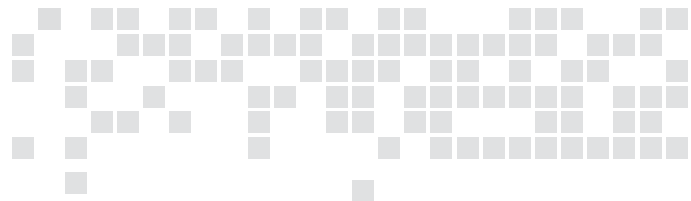


“A small step, but a step in the right direction”

## Quality assurance:

To maintain global standards in the quality of our work, products that we represent and ensure the highest level of efficiency and customer satisfaction.

The intention is to look for continual improvement within the organization, but also with the vendors and other service providers that are associated with Al Etemad Tents- Our vendors undergo a prequalification process to ensure that they meet Al Etemad Tents' standards both in terms of quality as well as the health and safety standards.



Aside from official routes, we undertake a personal responsibility to provide our clients with sustainable solutions in the following areas:

Use of energy saving lights as a standard.

Minimize the usage of real wood by using medium density fiber treated with veneer.

Use material with stipulated VOC content to reduce environmental and health impact.

# SAS Professional - Responsibility

- Contd...

## Corporate social responsibility

We understand, accept and appreciate our responsibility to the society in which we are operating and humanity in general. In this respect, we already have a policy in place, which is inclusive of:

Absolute transparency and clarity in all our dealings with all the stakeholders (clients, suppliers, sub-contractors and employees).

Zero tolerance towards corruption in any form.

Always abide by the laws and regulations of the land

Participate in charity activities, especially those sponsored by the public authorities.

Constantly train, motivate and remind the employees about the safety regulations, including road safety/driving manners.

No discrimination against race, gender, religion or nationality.



Equal opportunity and respect to all employees.

Provide and maintain the best possible work and living facilities to staff and workers

Refuse to deal with organizations/ persons who do not respect human rights.

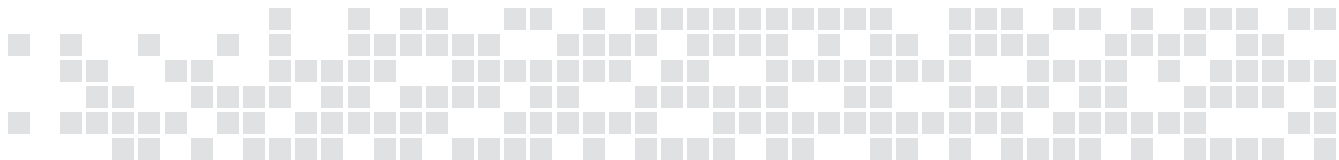
Cause minimum damage to the environment, by sustainable business practices especially in the fit-out process.

## Our values/work ethics

Trust and personal responsibility in all dealings

Work relentlessly towards every client's success

Match words with action, always.

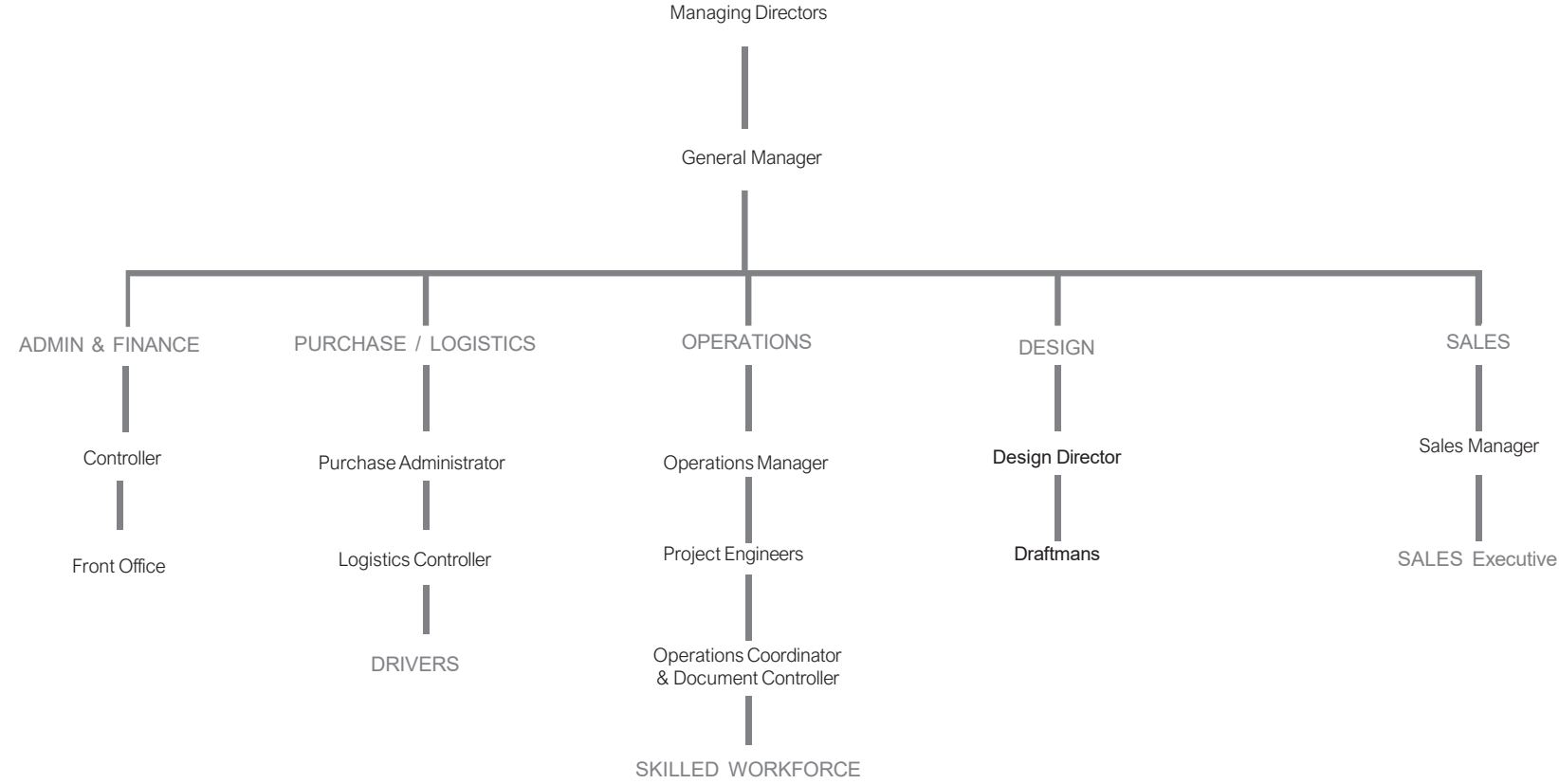
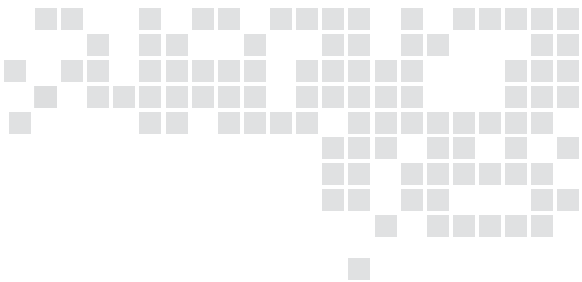




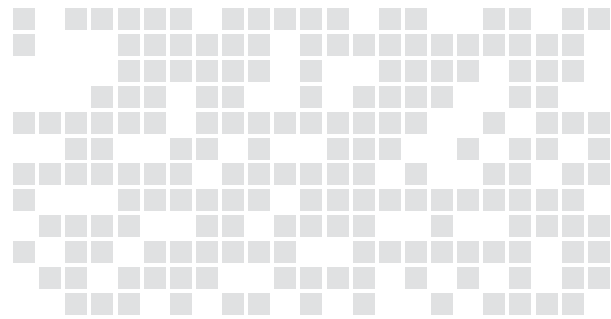
# Team Structure



# Team Structure

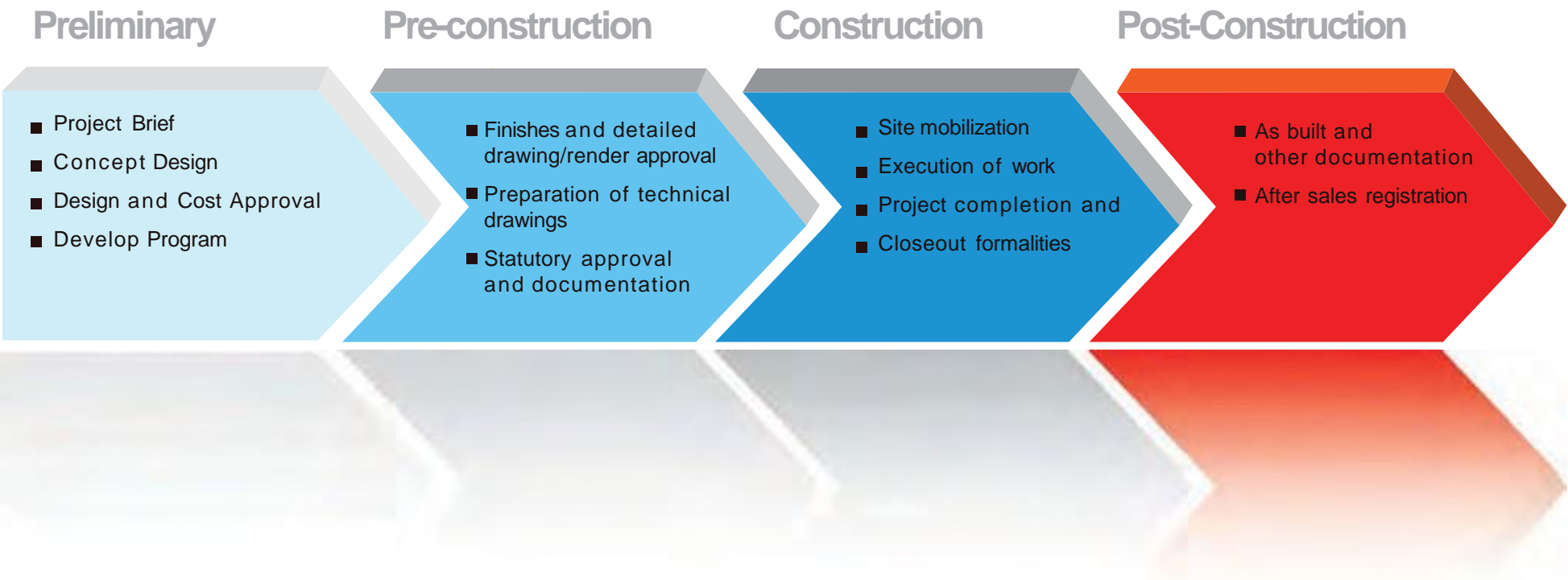


# Process Chart



Transparency in the approach to work has been the key factor to our efficiency. This has been achieved by maintaining the chain of communication to a minimum. Therefore our clients will interact with only one person – **“Project consultant”**

**“Clarity produces efficiency”**  
With this in mind, we feel that it is important that our clients understand the standard workflow process at an early stage of the project to strengthen the communication.





## Our services

Our client portfolio is extensive and diverse, which demonstrates our ability to satisfy a vast range of needs and requirements. This statement is endorsed by the amount of repeat shades and tents opportunities we obtain through clients references.

Our business has built an enviable reputation for delivering clients requirements on time; every time and all our delivery teams follow the company's ethos of being service driven. This ensures that our clients get the very best that the shades & tents industry can offer.



- ❖ Structural Designing Consultancy
- ❖ Structural Steel Fabrication & Installation
- ❖ Non-Structural Steel Fabrication & Installation
- ❖ MS Steel Hot Dip Galvanizing Process
- ❖ CNC Facades, CNC Cutting, and Installations
- ❖ Tensile Shades/ HDPE/ PVC/ PTFE Solutions
- ❖ Car Parking Shades, Pergolas, and Customized Tents



# Our Clients







## Steel Structure & CNC Facade

Al Ghurair Properties, Al  
Khabaisi Dubai



## Steel Structure & CNC Facade

Al Ghurair Properties, Al  
Khabaisi Dubai





## Steel Structure & CNC Facade

Al Ghurair Properties, Al  
Khabaisi Dubai



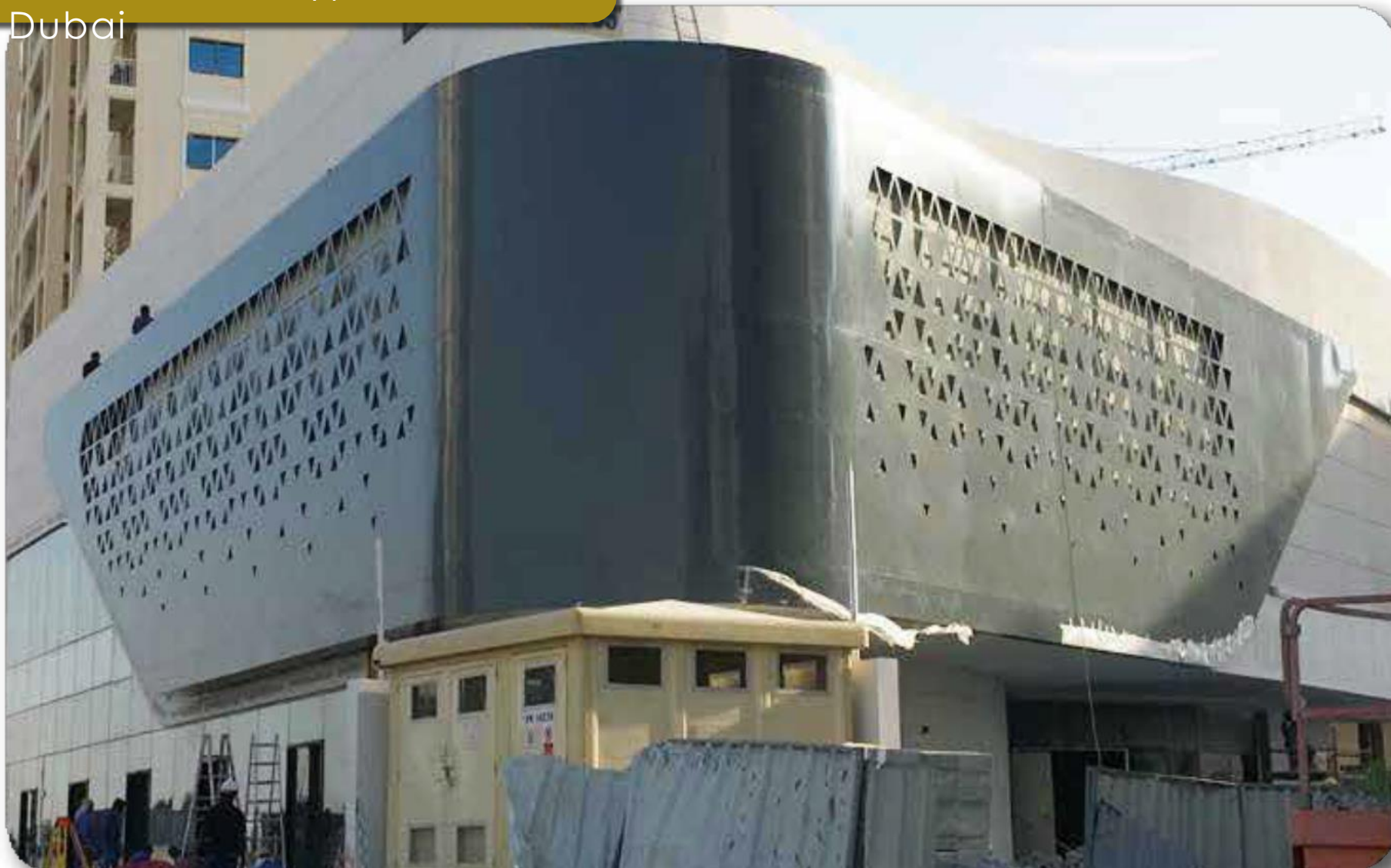
## Steel Structure & CNC Facade

Al Ghurair Properties, Al  
Khabaisi Dubai





Liwan Hypermarket Elevation Steel Framing  
& Cladding  
- Liwan Dubai





Liwan Hypermarket Elevation Steel Framing  
& Cladding  
- Liwan Dubai

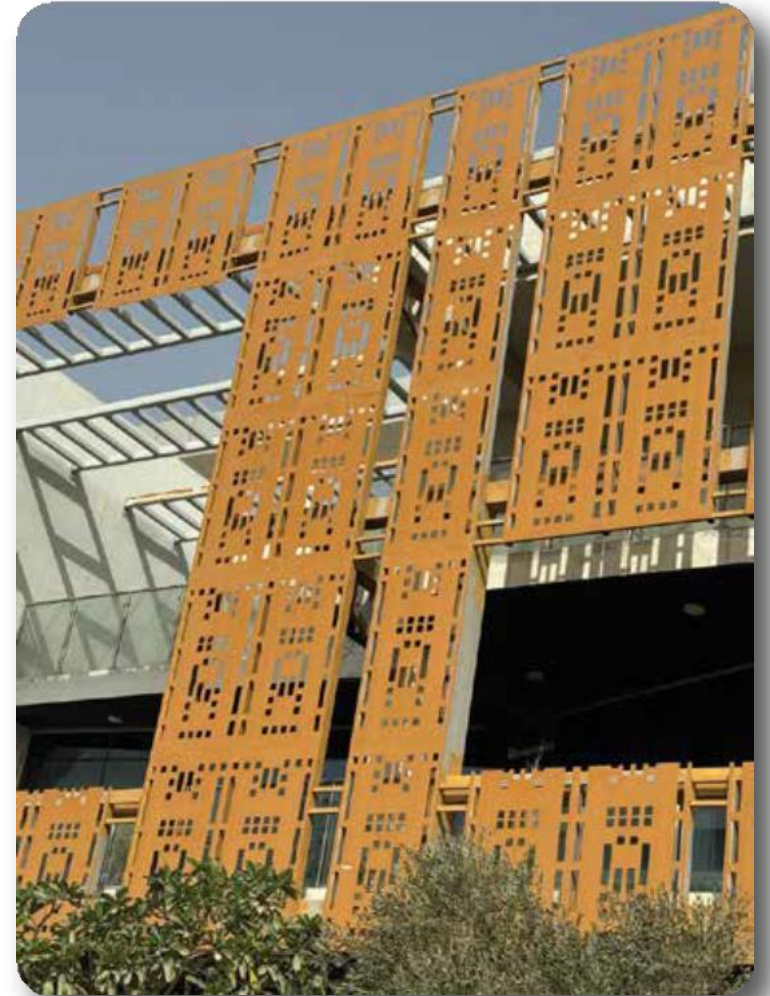
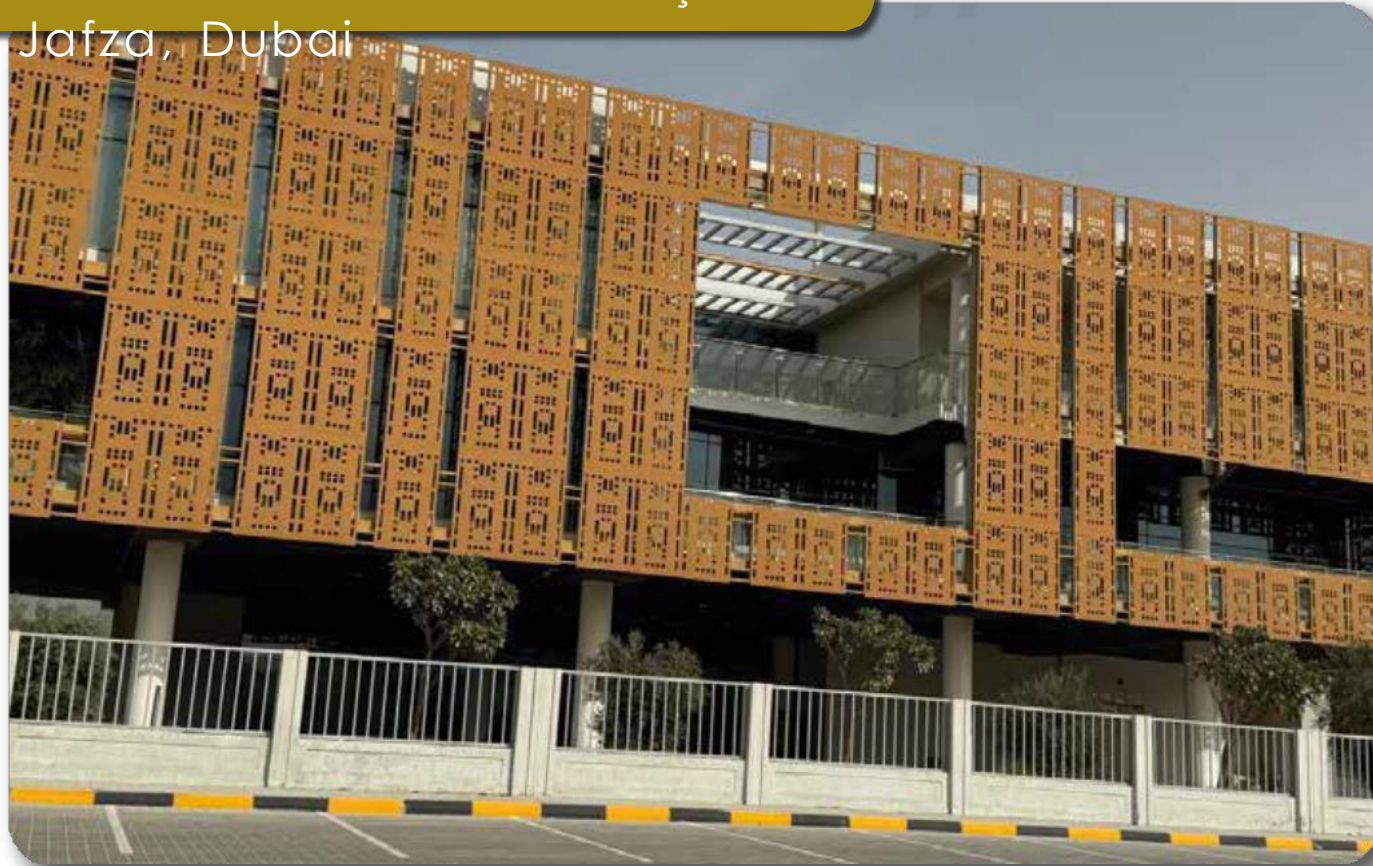


## Steel Structure - Liwan Hypermarket - Liwan Dubai





Steel Structure & CNC façade  
Jafza, Dubai





Steel Structural  
Pergolas Warsan  
Fourth Dubai





Steel Structural  
Pergolas Warsan  
Fourth Dubai





Dubai 5 The Villa -  
wadi Al safa



Dubai 5 The Villa -  
wadi Al safa





Livah Hypermarket Elevation Steel Framing  
& Cladding

# GRP Steel Frame Support - Etisalat Data Centre, Al Ain



Liwan Hypermarket Elevation Steel Framing  
& Cladding  
GRP Steel Frame Support - Etisalat  
Data Centre, Al Ain



## Steel Structure Gazebo - Arjan, Dubai





Steel Structure Gazebo -  
Arian, Dubai



## Corewall Steel Jacketing, Medore Tower, JLT, Dubai





## Corewall Steel Jacketing, Medore Tower, JLT, Dubai



## Steel Structure Canopy - DSO, Dubai





## Steel Structure Canopy - DSO - Dubai



## Steel Structure - Souidi German Hospital - Dubai





## MS Galvanizing Process





## Hand Rails

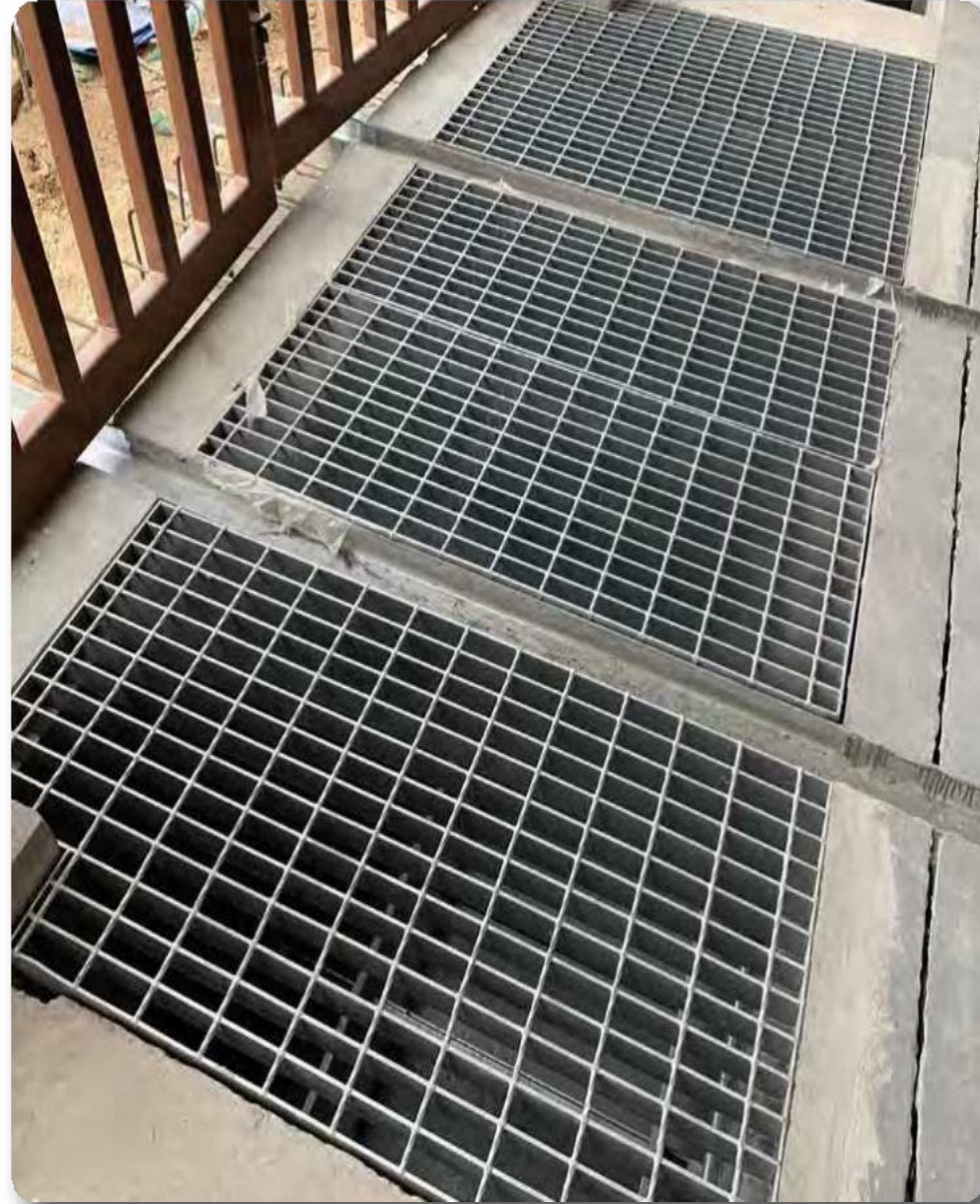


## Cross Bridges - Etisalat Data Centre, Al Ain



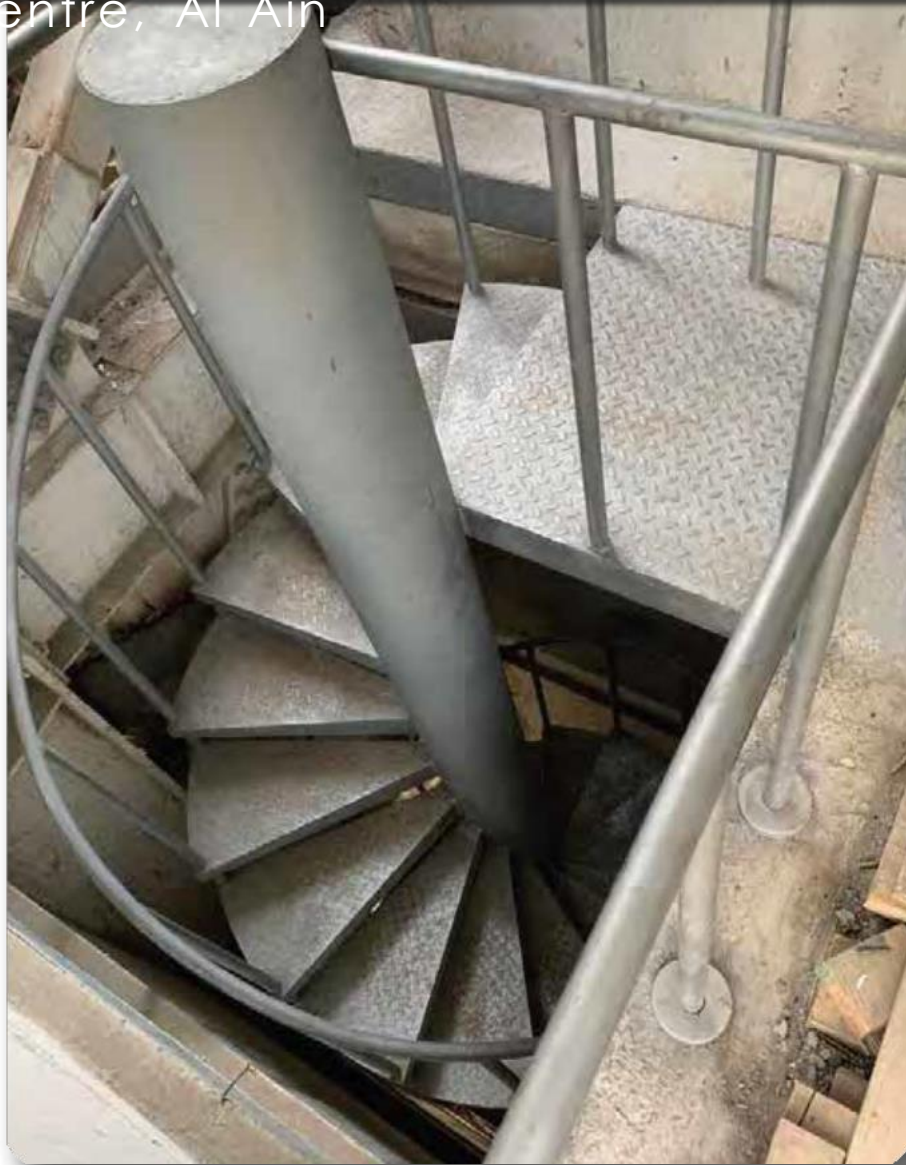


## Gratings - Etisalat Data Centre, Al Ain



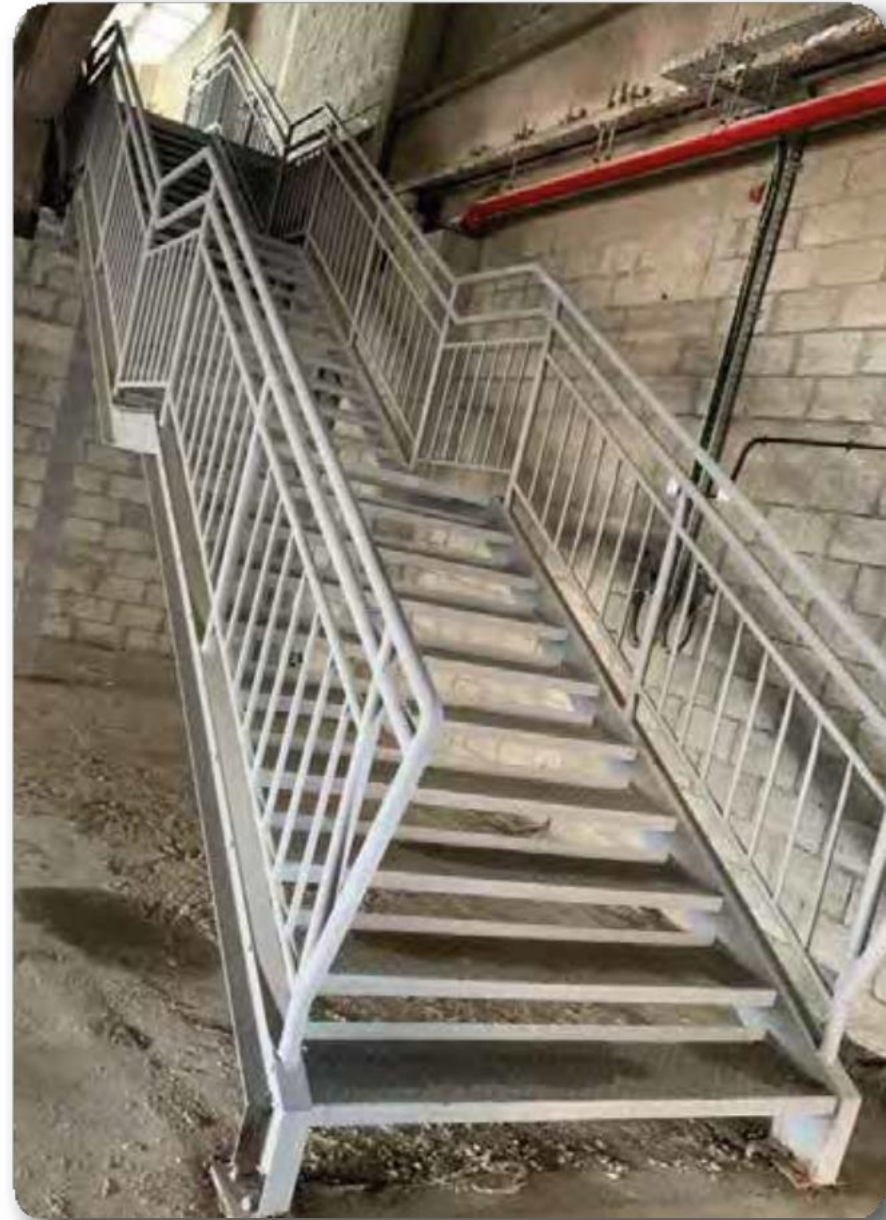


## Hand Rails & Staircase - Etisalat Data Centre, Al Ain





## Hand Rails & Staircase - Liwan Supermarket, Dubai



## Premium Parking Shade- The Villa - Dubai





## Premium Parking Shade- The Villa - Dubai



## Playground Shades, Vernus International School, Dubai





Playground Shades, Vernus  
International School, Dubai





Bayer Pear Polyurethane  
system, DIP - Dubai



Enoc - JAFZA,  
DUBAI





Enoc - JAFZA,  
DUBAI



Parking Shades - Lulu Barari  
Mall - Al Ain





Parking Shades - Lulu Al Raha  
Mall, Abudhabi



DP World, JAFZA  
- Dubai





Storage  
Shades, Dubai





## **S A S PROFESSIONAL TECHNICAL WORKS**

---

*Complete Metal & Tensile Shades  
Industry*

P.O.BOX : 40419, Dubai, UAE. Mobile - 050 531 4001, Tel. 04 345 00 22

Email : [salam@salamglobal.com](mailto:salam@salamglobal.com), [info@sasengineerings.com](mailto:info@sasengineerings.com)

Factory - Industrial area 17 - Sharjah, UAE

[www.sasengineerings.com](http://www.sasengineerings.com)