

Prashalee Gaikwad

# THE MIGHTY CHAIR

NIPPON 



PG

# **THE MIGHTY CHAIR**

# NIPPON

## *The Mighty Chair*

This is as bracing a show as we have come to expect from Prashalee Gaikwad, each of her paintings is charged with the task of bringing together opposing forces in a world where art is equally figurative and abstract. If the paintings prove they are something much more than pastiche, it is owing to further dialectic: that the paintings be handsomely realized yet left unsettled and unsettling. How we know this is immediately apparent in an overview of the exhibition where each painting flaunts its singularity in striking contrast with shows commonly seen wherein in a bid to convince the viewer of the career, all works on display are merely alike. Consistency is the goal when it comes to Prashalee so much as inner stylistic coherence and purpose.

*The Mighty Chair* (all works, 2025) is architecturally disposed, yet freely so. Winding elements, cat and volumetric spaces are conjoined in an unforced way to maintain a sense of perpetual experiment and exploration, which stimulate inventiveness in relating objects in space. Universally known to induce spatial thought and so a child's portal into adult worlds, this concrete genealogy is very evident in Prashalee's paintings devoted to the topic of the studio. Geometric and volumetric figures conjoined in a kind of mental space of creative learning. In the current series of deliberately disparate canvases, *The Mighty Chair* has all attributes of creative learning through mental alertness. But as cerebral as this may sound, when viewed up close the painting is typical of the artist's sensitized skill.

Prashalee's visual vocabulary derives from abstract universal elements that lend themselves to being read as signs, elements she freely permutes. Hanging together in the works are shapes in outline which create interference such that interior spaces proliferate. Permutations and combinations yield rich figure-ground ambiguities. The artist has fused the spatial choices in a flattened quasi-expressionist picture plane. Through such revision, Prashalee has set herself an ambitious program of learning that also extends to embedded meaning and reference adequate to the ambiguities, not so innocent, neither as common motifs nor as universal elements set out in neutrality. Simple clarity of figural elements in a straightforward-seeming planar space in this painting gives off an air of innocence, but this assumption is soon dispelled by consideration of its title. Thanks to reworking the givens of composition, however, the artist leaves us with a difficulty. As spatiality involves social intensity stemming from relative geographical positions, the work induces dynamic intensities through transfigured compositions. We cannot be the facile decoders of signs.

**Abhijeet Gondkar**

October 2025, Mumbai



*Recent Works by*  
**PRASHALEE**  
———— **GAIKWAD** ————



Prashalee Gaikwad  
Artist

Nippon Gallery  
Preview: 9 th October 2025 - Time 5:30 to onward  
The show continues till 28 th October 2025  
Time: 3pm to 7pm

Location: Nippon Gallery

We invite you to witness this dynamic exploration of color, movement, and emotion



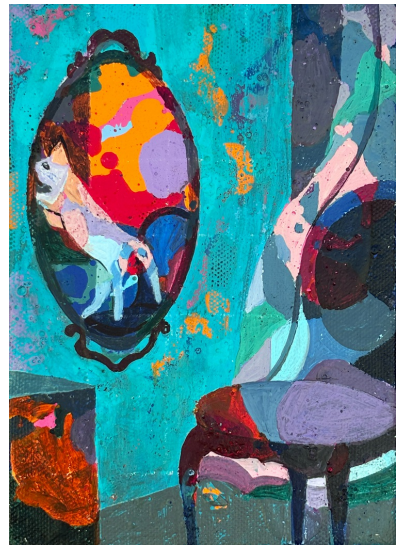
Artist: Prashalee Gaikwad

Title: The Mighty Chair

Size: 5 X 7 in

Medium: Acrylic on canvas

Year: 2025



Artist: Prashalee Gaikwad

Title: The Mighty Chair

Size: 5 X 7 in

Medium: Acrylic on canvas

Year: 2025



Artist: Prashalee Gaikwad

Title: The Mighty Chair

Size: 5 X 7 in

Medium: Acrylic on canvas

Year: 2025



Artist: Prashalee Gaikwad

Title: The Mighty Chair

Size: 5 X 7 in

Medium: Acrylic on canvas

Year: 2025



Artist: Prashalee Gaiwad

Title: The Mighty Chair

Size: 18 X 19 in

Medium: Acrylic on canvas

Year: 2025



Artist: Prashalee Gaikwad

Title: The Mighty Chair

Size: 18 X 18 in

Medium: Acrylic on canvas

Year: 2025



Artist: Prashalee Gaikwad

Title: The Mighty Chair / Size: 48 X 48 in / Medium: Acrylic on canvas / Year: 2025



Artist: Prashalee Gaikwad / Title: The Mighty Chair / Size: 48 X 84 in / Medium: Acrylic on canvas / Year: 2025

Handwritten signature

[www.nippongallery.com](http://www.nippongallery.com)



निप्पोन गॅलरी  
मुंबई

Nippon: 30/32, 2nd Floor, Deval Chambers, Nana Bhai Lane, Flora Fountain, Fort, Mumbai - 400 001

