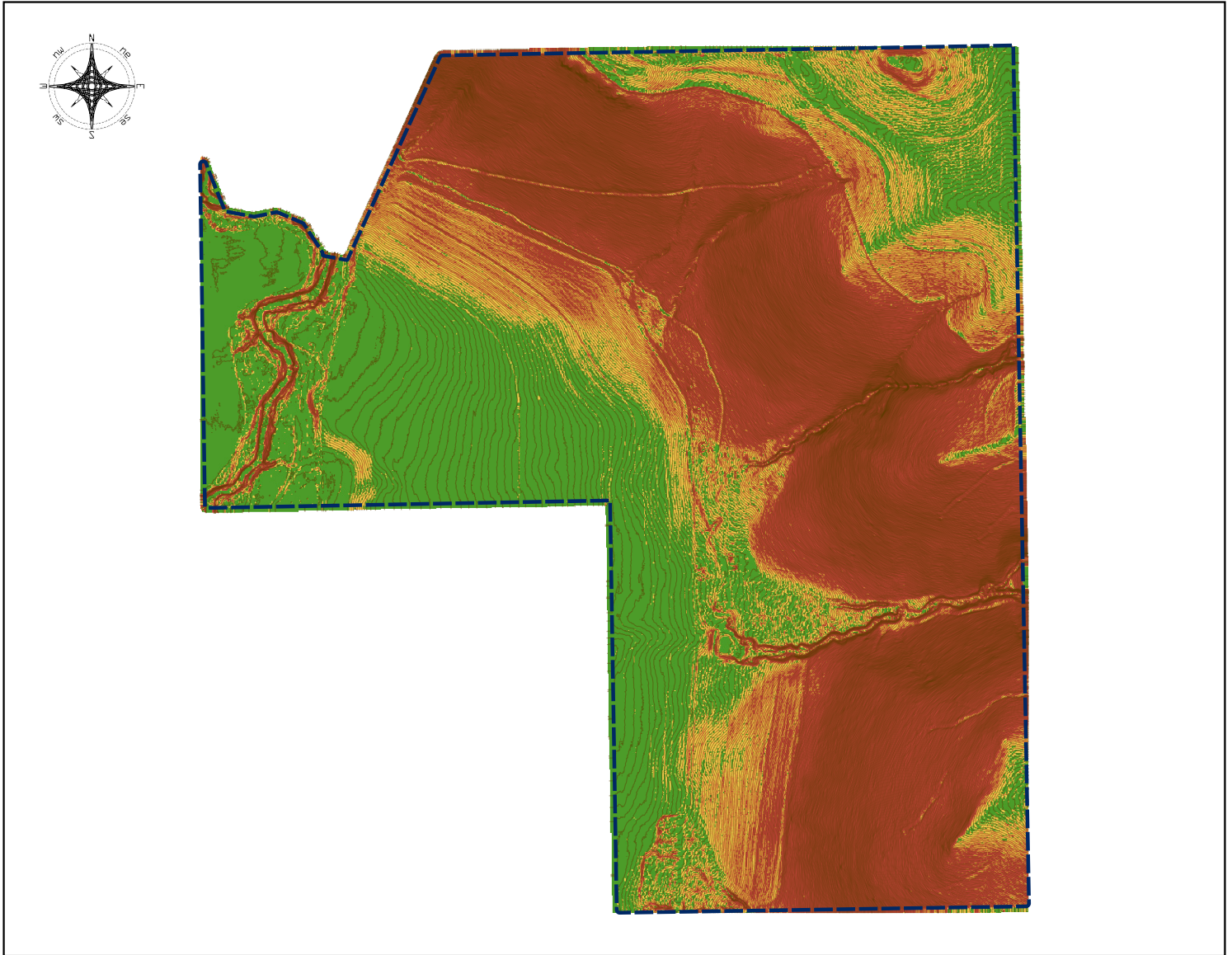




Topographic Map -- PIN 160000180, Winona County



Legend

 AOI Buffer

 1 foot contours

 Buildable (0-12%)

 Steep Slope (12-18%)

 Bluff/Conditional (18-24%)

 Unsuitable (24%+)

0 500 1,000 ft



Parcel boundary derived from the MnGeo statewide opt-in parcel compilation, a quarterly snapshot dataset. NOT suitable for legal boundary determination. Contact a licensed land surveyor for boundary questions. Elevation data derived from MnGeo's Statewide 2nd Generation 0.5m LiDAR DEM. Slope buildability classes are a general planning aid based on common thresholds found across southeast Minnesota zoning ordinances; they are NOT an official zoning or bluff determination, and specific thresholds vary by county and jurisdiction. Contact your local zoning office before making development decisions.

Map generated: June 18, 2026